

The Bureau of Reclamation  
WaterSMART Grants:  
Water and Energy Efficiency Grants

Davis and Weber Counties  
Canal Company

**FY 2020**

BOR-DO-20-F001

Canal Piping, Lining and  
Hydro Project



**Applicant Contact:**

Rick Smith, General Manager  
138 West 1300 North  
Sunset, Utah 84015  
(801) 774-6373  
ricks@davisweber.org

**Project Manager:**

Bryce Wilcox, PE  
466 North 900 West  
Kaysville, Utah 84037  
(801) 547-0393  
bkw@jub.com

## Table of Contents

---

<b>TECHNICAL PROPOSAL AND EVALUATION CRITERIA.....</b>	<b>1</b>
EXECUTIVE SUMMARY .....	1
<i>Applicant Info</i> .....	1
<i>Project Summary</i> .....	1
<i>Length of Time and Estimated Completion Date</i> .....	2
<i>Federal Facility</i> .....	3
BACKGROUND DATA.....	3
<i>Water Supply</i> .....	3
<i>Water Delivery System</i> .....	6
<i>Hydropower/Energy Efficiency</i> .....	7
<i>Relationship with Reclamation</i> .....	7
PROJECT LOCATION.....	8
<i>Geographic Location</i> .....	8
TECHNICAL PROJECT DESCRIPTION .....	9
E.1. TECHNICAL PROPOSAL: EVALUATION CRITERIA.....	10
<i>E.1.1. Evaluation Criterion A – Quantifiable Water Savings (30 Points)</i> .....	10
Quantifiable Water Savings.....	10
Canal Lining/Piping .....	10
<i>E.1.2. Evaluation Criterion B – Water Supply Reliability (18 Points)</i> .....	13
<i>E.1.3. Evaluation Criterion C – Implementing Hydropower (18 Points)</i> .....	17
<i>E.1.4. Evaluation Criterion D – Complementing On-Farm Irrigation Improvements (10 Points)</i> .....	18
<i>E.1.5. Evaluation Criterion E – Department of the Interior Priorities (10 Points)</i> .....	20
<i>E.1.6. Evaluation Criterion F – Implementation and Results (6 Points)</i> .....	20
E.1.6.1. Subcriterion No. F.1 – Project Planning.....	20
E.1.6.2. Subcriterion No. F.2 – Performance Measures.....	21
E.1.6.3. Subcriterion No. F.3 – Readiness to Proceed .....	23
<i>E.1.7. Evaluation Criterion G – Nexus to Reclamation Project Activities (4 Points)</i> .....	24
<i>E.1.8. Evaluation Criterion H – Additional Non-Federal Funding (4 Points)</i> .....	24
<b>PROJECT BUDGET .....</b>	<b>1</b>
FUNDING PLAN AND LETTERS OF COMMITMENT .....	1
BUDGET PROPOSAL .....	1
BUDGET NARRATIVE.....	3
<b>ENVIRONMENTAL AND CULTURAL RESOURCES COMPLIANCE.....</b>	<b>1</b>
<b>REQUIRED PERMITS OR APPROVALS .....</b>	<b>1</b>
<b>LETTERS OF PROJECT SUPPORT .....</b>	<b>1</b>
<b>OFFICIAL RESOLUTION .....</b>	<b>1</b>

### Attachments

- Attachment A Project Location Map
- Attachment B Detailed Project Map
- Attachment C Reclamation Verification Report Section
- Attachment D Letters of Support

## Table of Contents

---

Attachment E On-Farm Signature Page

Attachment F SOR Project Priorities

## Technical Proposal and Evaluation Criteria

---

### Executive Summary

---

#### *Applicant Info*

*Date:* October 3, 2019

*Applicant Name:* Davis and Weber Counties Canal Company (DWCCC or Company))

*City, County, State:* Sunset City, Davis County, Utah

*Project Manager:*

Bryce Wilcox, P.E.

Project Manager

801-547-0393

[bkw@jub.com](mailto:bkw@jub.com)

*Project Funding Request:* Funding Group II, \$1,100,000; Total Project Cost \$2,741,000

#### *Project Summary*

*Specify the work proposed, including how funds will be used to accomplish specific project activities and briefly identifies how the proposed project contributes to accomplishing the goals of this FOA.*

The Davis and Weber Counties Canal Company Canal Enclosure and Small Hydro Project will conserve an estimated 794 acre-feet of water with the enclosure of 1,685 feet of deteriorating liner and 1,875 feet of corroding metal pipe with 2,060 feet of 8 ft x 6 ft precast concrete box culvert and 1,500 feet of 66-inch reinforced concrete pipe. In addition, a 2-kW vertical axis hydropower system will be installed in the canal which will generate 8,197-kilowatt hours (kWh) of energy per year and install a metering station on one turnout and replace and improve the meter at another turnout to better manage water distributions. With implication of this project, the lower 22,425 feet of the main canal will be completely enclosed, reducing losses and improving safety.

Over the past fourteen-years DWCCC has made major strides to modernize their infrastructure by implementing methods and materials that have proven successful for water conservation, and energy sustainability. This project has been identified in DWCCC's System Optimization Review (SOR) as a high priority project which will protect and

*Photo 1 Unlined Canal in Front of U-Haul Business*



better manage over 34,000 acre-feet of water which flows through the project area. The development of this project will forward the objectives of Reclamation and this FOA as it facilitates water efficiency, conservation, and hydro power. In addition, the project helps to reduce conflict between irrigators and secondary water users and homes and business that are located along the canal. For many years the homes and business along these sections of the canal have had water seeping into basements and onto business properties. It has also raised groundwater levels near these areas causing the need to install sub pumps or other drainage systems. Residents and businesses near this project feel the affect every year during irrigation season when DWCCC puts water in the main canal. Complaints and frustrations by residents, business owners, and the DWCCC’s staff start around mid-April and end the first of October – the beginning and end of the irrigation season. By replacing the deteriorating liner and corroding pipes with concrete box culvert and concrete pipe, sustainability and efficiency of the system will be realized and conflicts will be greatly reduced.

*Photo 2 Open Canal Near Homes*



Between 2005 and 2017, DWCCC has built projects have that have a combined water saving of over 11,395 acre-feet of water. DWCCC has three other projects in the design phase and one waiting on a contract from Reclamation that will save another 1,519 acre-feet of water savings. This project will be one more step towards contributing to the water supply and reliability in the western United States.

### ***Length of Time and Estimated Completion Date***

*State the length of time and estimated completion date for the proposed project.*

The environmental report has been previously completed for this project area and will require an update to the document which will require a nominal review by Reclamation. The project is ready to prepare the final design as soon as the contracts are signed. DWCCC anticipates that contracts will be signed July/August 2020 and that design can begin by September 2020. The design is estimated to take six months March/April 2021. The box culvert and concrete pipe portion of the project will need to be installed outside of the irrigation season and is anticipated to take six months to complete either the season of November 2021 – April 2022 or next season October 2022 – April 2023. The project will be completed by September 30, 2023. The project will be accomplished within the three-year allowance.

### *Federal Facility*

*Whether or not the project is located on a Federal facility.*

The project is not directly located on a federal facility; however, DWCCC receives water from the Echo and East Canyon Reservoirs, which are owned by Reclamation. This project will permit better management of DWCCC’s water, allowing water to stay in the reservoirs longer during the irrigation season, which can benefit habitats and recreational opportunities within the reservoir (both are state parks).

### **Background Data**

The proposed project area for enclosing the open canal and replacement of the metal pipe is in Sunset, Clearfield, and Layton, Utah. The open canal is surrounded on one side by military residential housing and an elementary school. The other side by US Interstate 15 and the local city trail. The 100-year-old and 60-year-old concrete liner is deteriorating and seeping. The declining condition of the canal puts many of the surrounding properties at risk of flooding. The seeping water erodes the fine soils and increases vegetation growth. As the soil is lost, voids occur and a potential for a

*Photo 3 Open Canal by I-15 and Local Community Trail*

breach in the canal increases. A substantial breach in this area would be devastating! Homes, businesses, water users, municipalities, and farmers would lose their water supply; and the roads, trails, and intersection would experience significant impacts and property damage. A breach would also place more demands on municipal water supplies. The metal pipe is in a similar situation except it is underground and seeping into the groundwater near areas where groundwater levels are already high. A failure in the metal pipe may take more time to manifest itself, but its impacts can be even more disastrous because of the impact to so many businesses, a school, and a number of residential properties.



### *Water Supply*

*Source of water supply and water rights involved.*

The source of DWCCC’s water supply is from the direct flow rights of the Weber River, and storage rights in the Echo and East Canyon Reservoirs. Water is delivered through a series of canals, ditches, and low and high-pressure pipelines from the main canal. Direct flow water rights from the Weber River, based upon the flow of the river for direct use, are as follows:

- Flood 433 cfs,

- High Water 216 cfs
- Low Water 133 cfs
- Storage rights of 57,154 acre-feet (28,000 from East Canyon Reservoir and 29,154 from Echo Reservoir)

The 5-year average annual water rights available is 65,046 acre-feet. The average annual use delivered through the canal system is 48,721 acre-feet. The remaining portion (16,325 acre-feet) is directly diverted from the Weber River by other shareholders.

*Current water uses and number of water users served.*

The majority of the water use (based on volume) is agricultural with over 40,790 irrigated acres. Secondary water uses for lawns and garden, parks, churches, and schools consist of over 31,439 connections within the DWCCC service area, including water supplied to the sub-districts of Roy, South Weber, Syracuse, and Weber Basin Water Conservancy District.

*Current and projected water demand/potential shortfalls in water supply.*

Current demands are for approximately 65,000 acre-feet of water. The Company has seen significant changes in safety requirements and laws regarding water use and water rights. Local laws and policy changes, terrorist threats, and natural disasters, including potentials for residential property flooding have reminded the Company of the external risks and demands placed upon them and their water supply. Through extensive planning and evaluation, a list of potential water demands includes the following:

- Water to serve an additional 10,000 secondary water connections within the next ten years as growth and land use conversions continue throughout the DWCCC service area.
- Additional water to meet municipal and industrial (M&I) demands as communities, and commercial areas continue to evolve and grow. Information from the 2010 census indicates that the DWCCC service area, which includes areas within Weber and Davis Counties, doubled in population in 10 years instead of 20 years as projected earlier. The Company also supplies water to areas within Morgan and Summit Counties. They have also experienced significant and intense growth according to the 2010 census. This population change has prompted DWCCC to plan and prepare for greater secondary water needs beyond what had originally been anticipated.
- Water to service the fast-growing Summit County area. The Summit Water Distribution District has 303 shares of DWCCC water, and Weber Basin Water Conservancy District is currently leasing 5,000 acre-feet of water for the Park City/Snyderville Basin areas. Their thirst for water is growing at staggering rates and will have a significant impact upon demands on available existing water supplies.

DWCCC faces potential shortfalls in three main areas:

1. Water loss – Water seepage and losses within this project area are estimated to be at least 794 acre-feet of water annually; possibly more. Visual inspections show water seeping from the canal banks. These losses have impacted water delivery in the past and could cause potential flooding to roads and residents along the main canal. This section of the main canal delivers 34,000 acre-feet of water annually and transports all the water to Layton and Kaysville cities. If a breach in the canal occurred, the entire canal would have to be shut down, impacting all users. The roadways, intersection, trails, school, apartments, and others would be highly affected and would have a significant effect on the traffic flow on a number of highly traveled roads.

2. Drought - Shortfalls from drought can and have had an impact on the current water supply. In 2018, the snowpack was minimal at best. After the irrigation season, Echo and East Canyon Reservoirs water levels were so low that there was a fear if the drought continued and we had a winter in 2019 like we had in 2018, the reservoirs would never fill. Fortunately, snow came, and the rains fell in the spring that helped fill the reservoirs allowing the 2019 irrigation season to go without cutting short the irrigation season as had happened for the past 12 years. However, this could just be an anomaly and not the norm after 15 years of drought.

DWCCC worked closely with Weber Basin Water Conservancy District as they prepared their Drought Contingency Plan. The planning document and information that was developed has helped DWCCC redefine their drought mitigation and implementation plans for drought.

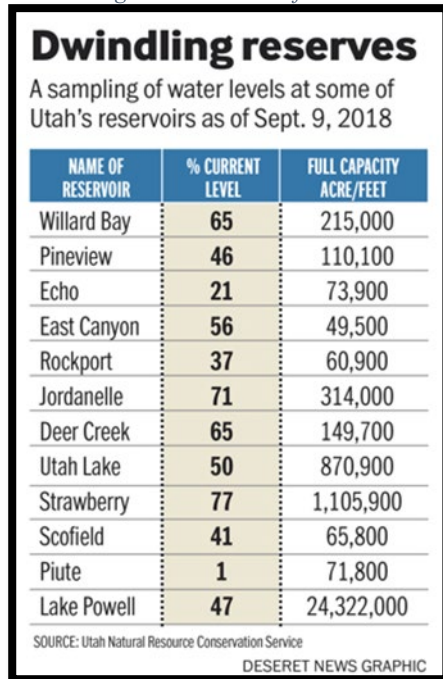
The Company evaluates its drought situations and operational procedures each year, including its management decisions for existing water supply conditions. DWCCC gathers data and identifies potential areas of concerns by monitoring flow rates at various locations regularly, which includes correlation with other entities. The amount of water available for delivery is determined each year by natural flow rights and storage rights. The drought has severely impacted the amount of storage carryover water that has been available at the end of the irrigation season, and during the past few years of drought, the natural flow rights were limited or not available. The water losses from seepage, potential flooding, and drought conditions make this a high-priority project on the lower main canal.

3. Growth - Within the past eleven years, DWCCC’s service area has seen significant population increases with many new residential housing developments, businesses, schools, and churches; some of which border next to the main canal. Davis and Weber Counties are listed as two of the fastest growing counties in Utah. Both counties are served by DWCCC water. Further evidence of growth is shown in the conversion of water used for agriculture purposes to that of residential lawn and garden applications. In 1995, agricultural water usage was 80 percent of the total water used, whereas today, the use is approximately 55 percent; according to the Governor of Utah Water Task Force Committee. As populations increase in the service area, the need for more culinary and secondary water also increases. This demand could have significant impacts on the Company’s ability to provide water for new customers in their service areas.

*If water is primarily used for irrigation, describe major crops and total acres served.*

The canal supplies both pressure irrigation for lawn and garden irrigation systems and water for agricultural irrigation. The major crops are corn, grains, alfalfa, row crops such as watermelons, pumpkins, tomatoes, etc. With serving nearly 65 different ditch companies and thousands of

Figure 1 Reservoir Levels in September 2018 Going into the Winter of 2019





residential lawn and garden users, it is difficult to estimate the total acres of agricultural lands served.

### ***Water Delivery System***

*Describe the applicant's water delivery system as appropriate. For agricultural systems, please include the miles of canals, miles of laterals, and existing irrigation improvements (e.g., type, miles, and acres). For municipal systems, please include the number of connections and/or number of water users served and any other relevant information describing the system.*

#### ***Reservoirs***

- East Canyon Reservoir storage – 48,000 acre-feet capacity (DWCCC owns 28,000 acre-feet of this capacity)
- Echo Reservoir storage – 74,000 acre-feet capacity (DWCCC owns 39.4% of this capacity)

#### ***Canal System***

- River Diversion includes four 18-foot wide radial gates across the Weber River to divert water into the DWCCC forebay channel
- Forebay channel includes trash racks, a canal gate that controls the flow into the main canal, and an overflow crest gate structure that diverts excess water back into the Weber River, which helps control deliveries and fish flow protection.
- The DWCCC canal system consists of 17.2 miles of main canal, which is defined as the upper main canal and the lower main canal sections, and includes:
  - No liner or Deteriorated 100-year-old liner – 3.9 miles
  - 1980's and 1990's Non-Reinforced Concrete Open Canal Liner – 2.2 miles
  - 2001 to 2011 Reinforced Concrete Open Canal Liner – 4.1 miles
  - Enclosed Pipe or Box Culvert – 6.6 miles
  - Box Culverts under Highways and Freeways – 0.4 miles
  - 60 diversion gates and siphons servicing 65 different ditch companies

#### ***Pressurized Secondary System***

- Approximately 36 miles of pressurized secondary water transmission trunk lines
- Sunset Secondary Water Reservoir with 34 acre-feet capacity
- Church Street Secondary Water Reservoir with 43 acre-feet water storage capacity
- Kaysville East Secondary Water Reservoir with 24 acre-feet water storage capacity
- 200 South West Point Secondary Water Reservoir with 12 acre-feet water storage capacity
- Roy Water Conservancy District with a 125 acre-feet water storage capacity
- 112.4 miles of secondary water distribution piping in the West Point/Clinton System
- 64.8 miles of pressurized secondary water distribution piping in the Kaysville/Layton System
- 3.2 miles of pressurized secondary water distribution piping in South Weber System
- Syracuse City with three water storage reservoirs that total 106 acre-feet water storage capacity

### *Hydropower/Energy Efficiency*

*If the application includes a hydropower component, describe existing energy sources and current energy uses.*

DWCCC is supplied power by the Rocky Mountain Power Company and uses approximately 464,366 kWh of electricity annually throughout its system. To help offset the electricity usage, DWCCC has been installing solar and hydroelectric facilities over the past few years by installing the following:

- 2 Smart Hydro 2kW turbines generating a total of 17,568 kWh per year (installed 2017)
- 2 vertical axis 2 kW Turbines Generating a total of 14,000 kWh per year (installed June 2018)
- 2 Hydro-Power Pelton Wheel 4kW Turbines generating a total of 7,200 kWh per year (installed April 2018)
- 9.92 kW Solar array generating 16,723 kWh per year (installed May 2018)

These facilities will offset 59,059 kWh of electricity annually.

### *Relationship with Reclamation*

*Identify any past working relationships with Reclamation. This should include the date(s), description of prior relationships with Reclamation, and a description of the project(s).*

DWCCC has had a number of projects in conjunction with Reclamation over the past years, starting in the 1930s with the construction of Echo Dam and in the 1964 expansion of the East Canyon Dam. Reclamation facilities exist in the same Weber River Basin as this proposed Project. Some DWCCC stock is owned by Weber Basin Water Conservancy District (WBWCD), a Reclamation project. Some of their water is delivered through the DWCCC facilities, approximately 16,325 acre-feet.

2019 - DWCCC received WaterSMART Energy Efficiency Grants for \$880,000. The project includes piping 1,700 feet of deteriorated concrete lined and unlined earthen canal and replacing 1,060 feet of deteriorated metal pipe with a 7-foot by 6-foot high precast box culvert; installing a 2kW vertical axis hydropower turbine. The project will save 794 acre-feet of water and produce 8,197 kWh of power annually.

2018 - DWCCC received two WaterSMART Energy Efficiency Grants for \$300,000 each. The projects included installing 600 secondary water meters and piping 1,200 feet of unlined earthen canal and replacing 320 feet of deteriorated metal pipe with a single 66-inch reinforced concrete pipe; installing a 2kW vertical axis hydropower turbine. The projects together will save 678 acre-feet of water and produce 11,797 kWh of power annually.

2017 - DWCCC received a WaterSMART Energy Efficiency Grant for \$1 million. The project included piping 3,220 feet of unlined earthen canal with a 7-foot by 6-foot high precast box culvert, 500 feet of earthen canal with a single 66-inch diameter pipe; and installing a 10kW solar array. The project will save 733 acre-feet of water and produce 16,723 kWh of power annually.

2016 - DWCCC received a WaterSMART Energy Efficiency Grant for \$300,000. The project included piping 950 feet of 100-year-old deteriorated canal liner, with an 8-foot wide by 7-foot high reinforced concrete box culvert, and a 2kW small hydropower generation turbine at key locations to generate 8,784 kWh of power per year for each project.

2015 - DWCCC received two WaterSMART Energy Efficiency Grants for \$300,000 each. The projects included installing 650 secondary water meters and piping 2,000 feet of open, unlined canal. Both projects include small hydropower generation turbines at key locations to generate 11,664 kWh of energy per year.

2014 - DWCCC received a WaterSMART Energy Efficiency Grant for \$1 million towards a \$3.05-million-dollar project. The project includes metering five turnouts, placing over 4,300 feet of box culvert and large diameter RCP pipe in the main canal and the installation of two 5 kW small hydropower generation turbines at key locations to generate 8,784 kWh of energy per year.

2011- DWCCC received a WaterSMART System Optimization Review (SOR), Grant. This Plan was completed in 2013 and has identified the project priorities in the canal water system. The SOR is reviewed and updated as needed. This canal project has been designated as a top priority in the completed SOR Plan and will assist in accomplishing the goals of the Plan.

2009 - DWCCC received a \$3.6 million matching “Challenge Grant” to replace the forebay channel, river diversion structure, and gates, and install 1,300 feet of box culvert located in Weber Canyon. The SCADA system was also upgraded to allow for remote operation of the new facilities. That project also included 3,250 feet of two 66-inch diameter RCP pipes, 500 feet of three 66-inch diameter RCP pipes, and 1,650 feet of new open canal trapezoidal concrete liner with water stop to replace existing deteriorated concrete liner sections and areas with no liner at all. Many entities, including Federal, State, County and City Governments, private property owners, water districts, and shareholders have participated in and worked toward the success of DWCCC’s infrastructure rehabilitation projects.

2005 - The Company received a Water 2025 “Challenge Grant” for water measurement and automation project. This measurement and automation project is highly successful in that it has identified areas of water savings, provided for more accurate measurements and better monitoring, established faster reaction times for emergency responses, and implemented automation throughout DWCCC’s system.

## Project Location

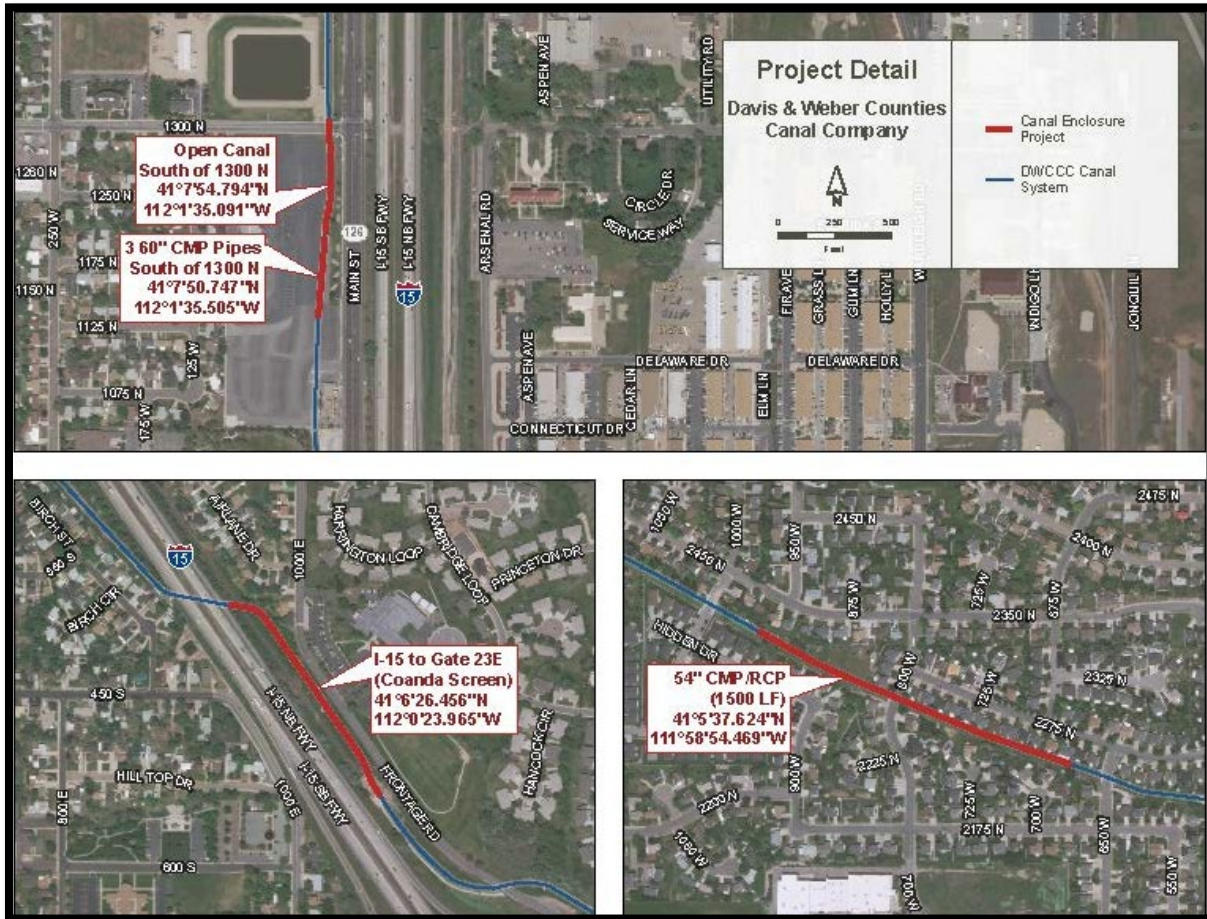
---

*Provide specific information on the proposed project location or project area including a map showing the geographic location. For example, {project name} is located in {state and county} approximately {distance} miles {direction, e.g., northeast} of {nearest town}. The project latitude is {##°##'N} and longitude is {###°##'W}.*

### **Geographic Location**

The service area of DWCCC includes communities located in Weber, Davis, Summit, and Morgan Counties, including the cities of West Point, Clinton, Sunset, Layton, South Weber, Kaysville, Roy, Clearfield, West Haven, Riverdale, and Syracuse, with a total population of over 370,000 residents. They also provide water to the Snyderville Basin Area, South Weber, Roy, Clinton, West Point, Syracuse, Layton, and Kaysville for irrigation and secondary water use. The project location, latitude and longitude, and an overview of the entire service area are shown in the attached maps. See Attachment A Project Location Map and Attachment B Detailed Project Map.

Figure 2 Project Location Map



## Technical Project Description

*Describe the work in detail, including specific activities that will be accomplished. This description shall have sufficient detail to permit a comprehensive evaluation of the proposal.*

The proposed project will conserve 794 acre-feet of water by enclosing 1,685 feet of deteriorating liner and 1,875 feet of corroding metal pipe with 2,060 feet of 8 ft x 6 ft precast concrete box culvert and 1,500 feet of 66-inch reinforced concrete pipe. In addition, a 2-kW vertical axis hydropower system will be installed in the canal which will generate 8,197-kilowatt hours (kWh) of energy per year. This project will also install a metering station on one turnout and replace and improve the meter at another turnout to better manage water distributions. With the implementation of this project the lower 22,425 feet of the main canal will be completely enclosed, reducing losses and improving safety.

The existing canal with deteriorating liner is elevated above the adjacent properties in certain locations and has many condition issues, significant seepage losses, and is difficult to access and clean. This project will allow DWCCC to better manage approximately 34,000 acre-feet of water that flows through this area of the canal and to reduce seepage. With the installation of the 2kW

vertical axis hydropower turbine power production will provide DWCCC with the ability to provide additional power to their shop and office.

## E.1. Technical Proposal: Evaluation Criteria

---

### *E.1.1. Evaluation Criterion A – Quantifiable Water Savings (30 Points)*

#### Quantifiable Water Savings

*Describe the amount of estimated water savings. For projects that conserve water, please state the estimated amount of water expected to be conserved (in acre-feet per year) as a direct result of this project.*

This project will conserve an estimated 794 acre-feet per year based on 34,000 acre-feet of water flow through this area annually. This is an approximate 2.5% water savings.

*Describe current losses. Explain where the water that will be conserved is currently going (e.g., back to the stream, spilled at the end of the ditch, seeping into the ground).*

Water is seeping through the deteriorating liner in the canal into the ground, lost to evaporation, and is also being taken up by vegetation. The soils around the canal are granular soils and allow the water to pass through very quickly.

*Describe the support/documentation of estimated water savings. Provide sufficient detail supporting how the estimate was determined, including all supporting calculations.*

The flows through the canal are tracked and monitored. An inflow-outflow model over an irrigation season was used to calculate the water savings. Under the Canal Lining and Piping section below the calculations and assumptions have been documented for the estimated water savings. Most recently (May 2017), DWCCC met with the Bureau of Reclamation who performed a Water Conservation Verification study. This Study verified water losses estimates for a very similar WaterSMART project within the same canal and for over a similar length. The calculated water losses DWCCC used, were compared to the Reclamation Water Conservation Verification study, and their conclusion corresponded with DWCCC's calculations. See Attachment C – Reclamation Verification Report Section.

#### Canal Lining/Piping

a. *How has the estimated average annual water savings that will result from the project been determined? Please provide all relevant calculations, assumptions, and supporting data.*

During the 2018 irrigation season, DWCCC monitored the inflow-outflow along the lower 7.7 miles of canal. There is a meter in the main canal, called the "Roy Flume." This meter was verified in the spring of 2013 by an outside company and was tested to be accurate within 5 percent. DWCCC currently has ten continuously recording metered turnouts and eleven turnouts with flumes and weirs as measuring devices along the lower portion of the canal. DWCCC took daily readings and measurements on all the non-SCADA recording flow measurement turnouts. All the flow measurements were compiled every month, showing the water used at each turnout and how much water entered the system. To determine project water losses, DWCCC used an inflow-outflow method over the entire season. The total amount metered at all the turnouts was subtracted from the Roy Flume measurements to calculate how much water was lost to the system.

The total that passed through the Roy Flume was 48,256 acre-feet. The total amount delivered through the turnouts was 41,932 acre-feet. From these measurements, we found

that we lost 6,324 acre-feet through the 7.7 miles of the lower main canal system in 2018. The following table shows the results of the system monitoring for 2018.

**Shortened Irrigation Season Effect on Total Losses**

The 2018 Irrigation season was shortened by 14 days due to the drought conditions and the very hot and dry summer. The irrigation season ended October 1<sup>st</sup> rather than October 15<sup>th</sup>. Had the irrigation season been the normal 183 days rather than 169 days the water losses would have been higher. The irrigation season was 92.35% (169/183= 92.35%) of a normal irrigation season. The entire season's water losses in the canal system would have increased by the percentage that the irrigation season was shortened, equating to 6,848 acre-feet.

$$(6,324 \text{ acre-feet} / 92.35\% = 6,848 \text{ acre-feet})$$

**Water Loss of the Canal Per-foot**

Below the Roy Flume, the main canal has 14,085 feet of unlined or deteriorating liner that the water must pass through in order to be delivered to the DWCCC users. The water loss calculations on a per-foot basis are being distributed equally across the main canal. Given these components, the water loss per foot is as follows: 6,848/14,085 = 0.486 acre-feet per foot of canal.

**Project Water Losses**

This project will enclose 1,685 feet of old open canal and will also replace 1,875 feet of deteriorated metal pipe within the main canal. The projected water savings of the open liner are 819 acre-feet (1,685 ft \* 0.486 acre-feet per foot). The deteriorated metal pipe is also losing water. In its current condition, we were unable to measure the water losses in the deteriorated pipe adequately. The 819 acre-feet are conservative and would be increased by the water lost through the 1,875 feet of deteriorated metal pipe. Using a 3 percent loss for reinforced concrete box culvert, the net water savings for the project will be 794 acre-feet per water season. The improvements to the canal will allow DWCCC to manage approximately 34,000 acre-feet of water better as it flows through the project area.

As stated previously, in May 2017, the Bureau of Reclamation completed a Water Conservation Verification of a DWCCC WaterSMART Canal Piping Project. This WaterSMART project piped 950 feet of open canal. Reclamation concluded that the 950 feet of canal would have a water savings of 548 acre-feet. See Attachment C – Reclamation Verification Report Section.

Gates	Estimated Water Delivered (Acre-Feet)
WBWCD Roy Pond	1,689
North Flume	411
Roy Water Cons.	6,727
Sunset Res	6,613
Gate 03A	335
Gate 8	287
Gate 9	25
Gate 11	436
Gate 15	2,741
Gate 18	6,257
Gate 19	94
Gate 23E	3,494
Gate 23W	5,365
Gate 24A	142
Gate 25	46
Gate 27	1,628
Gate 30	1,264
Gate 33	250
Layton Res	3,871
West 05 Butler	128
West 05 Kap	127
<b>Totals</b>	<b>41,932</b>
<b>Total Water Delivered at Roy Flume</b>	<b>48,256</b>
<b>Difference or Water Lost to System</b>	<b>6,324</b>

The Reclamation water savings of 548 acre-feet for 950 feet corresponds to a water loss of 0.577 acre-feet per foot of canal and gives a calculated water loss of 972 acre-feet for 1,685 feet of canal.

- b. *How have average annual canal seepage losses been determined? Have ponding and/or inflow/outflow tests been conducted to determine seepage rates under varying conditions? If so, please provide detailed descriptions of testing methods and all results. If not, please provide an explanation of the method(s) used to calculate seepage losses. All estimates should be supported with multiple sets of data/measurements from representative sections of canals.*

An inflow/outflow test was done over the entire 2018 irrigation season. A known quantity of water passed the Roy Flume at the start of the lower portion of the canal. The water used at each turnout was subtracted from the total that was passing through the Roy Flume, giving the total water that was lost to the system. There are currently fourteen continuously metered turnouts on the canal and seven turnouts with weirs and flumes. DWCCC took daily measurements on all the non-continuously recording turnouts to quantify how much water was passing through each turnout. This information was taken each month to determine water lost within the system. These calculations were used to calculate the water lost in the system.

- c. *What are the expected post-project seepage/leakage losses and how were these estimates determined (e.g., can data specific to the type of material being used in the project be provided)?*

Reinforced concrete pipe with sealed joints will be used, which has an estimated loss factor of minus 3 percent. These losses will be minimal and have been noted in the calculations for the water loss savings. Data specific information is available if needed. This is a commonly used material with historical loss information that is often used by Reclamation in projects.

- d. *What are the anticipated annual transit loss reductions in terms of acre-feet per mile for the overall project and for each section of canal included in the project?*

Annual transit losses are estimated across the entire length of the main canal. The losses in the canal average 6,848 acre-feet for 2.67 miles of deteriorated or unlined canal this gives a loss of 2,565 acre-feet per mile per water season.

- e. *How will actual canal loss seepage reductions be verified?*

The actual canal losses will be checked by using the same season-long inflow/outflow test that was done to determine the initial losses. The Roy Flume provides a known quantity of water at the start of the lower portion of the canal. The water used at each turnout will be measured and then subtracted from the total passing through the Roy Flume. The remaining amount of water will be the total water lost to the system after the project has been completed.

DWCCC will take daily measurements on all of the non-recording water flow measurement devices to quantify how much water has passed through these turnouts. The information will be documented and calculated every month and will allow the Company to monitor and measure the benefits of the project to the water losses of the system.

- f. *Include a detailed description of the materials being used.*

The canal will be enclosed with 8'x6' precast concrete box culvert and 66 inch reinforced concrete pipe, both with gasketed joints to prevent water seepage.

### ***E.1.2. Evaluation Criterion B – Water Supply Reliability (18 Points)***

*Address how the project will increase water supply reliability. Provide sufficient explanation of the project benefits and their significance. These benefits may include, but are not limited to, the following:*

1. *Will the project address a specific water reliability concern? Please address the following:*
  - o *Explain and provide detail of the specific issue(s) in the area that is impacting water reliability, such as shortages due to drought, increased demand, or reduced deliveries. Will the project directly address a heightened competition for finite water supplies and over-allocation (e.g., population growth)?*

The impacts to water reliability include:

**Drought:** Drought has been a significant concern to the reliability of the DWCCC system. A severe drought from 2012 through 2018 put a strain on the DWCCC water system and required them to shorten irrigation seasons. Drought years in the past have severely impacted the amount of storage carryover water that has been available at the end of the irrigation season, and during the past few years of drought, the natural flow rights were limited or not available. The water losses from seepage, potential flooding, and drought conditions make this a high priority project on the lower main canal.

**Growth:** DWCCC's service area has seen significant population increases with many new residential housing developments, businesses, schools, and churches. As some of the fastest growing counties in Utah, Davis and Weber County are both having significant changes in water uses. Water that has always been used for agriculture purposes is now changing to that of residential lawn and garden application. As the population increases in the service area, the need for more culinary and secondary water also increases. This demand could have major impacts on the Company's ability to provide water to other new customer needs in their service areas which are running short of water based upon drought conditions, insufficient storage, and transmission water losses from unlined or unenclosed distribution systems.

DWCCC has always worked closely with local, state, and federal agencies to do their part to keep flows within the Weber River system and will continue to do so.

Working with Utah Division of Wildlife Resources, Weber Basin Water Conservancy District, and others, DWCCC uses conserved water to increase water sustainability within the Weber River.

- o *Describe how the project will address the water reliability concern? In your response, address where the conserved water will go and how it will be used, including whether the conserved water will be used to offset groundwater pumping, used to reduce diversions, used to address shortages that impact diversions or reduce deliveries, made available for transfer, left in the river system, or used to meet another intended use.*

The project will enclose broken up open canal with precast box culvert and replace corroding metal pipe with concrete pipe. The open canal and corroding metal pipe loses essential water to leaks, seepage, and root uptake. Enclosing the canal and replacing the metal pipe will allow the water being lost to be used by farmers and secondary water irrigators. This will provide additional water for use in times of drought and will allow users to more fully exercise their water right.

The conserved water will provide a more secure water right and be more available as a buffer during times of drought. It will also be available for secondary use as



agricultural lands convert to residential lawns and gardens. Opportunities to benefit the environment, and fish and wildlife habitats on the Weber River can be considered which would allow a prolonged and better-balanced stream flows of available water. The conserved water will enable flows to remain in the river system for longer periods and held for longer in the season in the Echo and East Canyon Reservoirs.

- *Provide a description of the mechanism that will be used, if necessary, to put the conserved water to the intended use.*

The development of this project will allow for more water to be saved and held in the Echo and East Canyon Reservoirs and within the Weber River system. The conserved water will flow through the Weber River and then the existing canal system to the current users.

- *Indicate the quantity of conserved water that will be used for the intended purpose.*

The 794 acre-feet of water that is conserved will all be used to make the water system more reliable. This water will be used within the DWCCC system to reduce the impacts of drought and water shortages in the system.

2. *Will the project make water available to achieve multiple benefits or to benefit multiple water users? Consider the following:*

- *Will the project benefit multiple sectors and/or users (e.g., agriculture, municipal and industrial, environmental, recreation, or others)?*

The project will benefit agricultural, municipal users, and the environment. The conserved water will go directly to the agricultural users to allow them a longer growing season. One of the larger shareholders of DWCCC is the Weber Basin Water Conservancy District. They will also receive their proportional share of the conserved water. They supply water to many cities and counties for culinary and secondary uses. The environment is also benefited as the water can stay in the reservoirs and river system longer.

- *Will the project benefit species (e.g., federally threatened or endangered, a federally recognized candidate species, a state listed species, or a species of particular recreational, or economic importance)? Describe the relationship of the species to the water supply, and whether the species is adversely affected by a Reclamation project.*

The Bonneville Cutthroat Trout and Bluehead sucker are native fish species found in areas within the Weber River. Both species are covered by conservation agreements that the State of Utah has entered into with the U.S. Fish and Wildlife Service and other parties. The population status of these two sensitive species warrants additional conservation efforts to diminish the likelihood of future listings under the Endangered Species Act.

UDWR's approach to aquatic species conservation and management in the Weber River, in part, focuses on reconnecting and maintaining connectivity of priority habitats. By removing unnecessary barriers to fish migration, or modifying existing barriers to allow upstream movement, species, notably Bonneville Cutthroat Trout and Bluehead Sucker, will thrive.

Stable and connecting flows between Bonneville Cutthroat Trout and Bluehead Sucker habitats are a fundamental requirement for conservation actions to be

successful. Therefore, most any project that enhances the continuity and maintenance of flows within the Weber River is a step in the right direction. As DWCCC and UDWR work cooperatively to protect and conserve these native species, their habitats will be benefitted.

▪ *Will the project benefit a larger initiative to address water reliability?*

The Weber River Water Users Association has several goals that this project will help move forward. One of the main goals they have adopted from the State of Utah is the water conservation goal to reduce water demands by at least 25 percent before 2050. This is for both indoor and outdoor use. DWCCC believes that if they can modernize their delivery system to conserve large amounts of water that is lost through their delivery system, they can make water more reliable and help to fulfill this important goal for this short water basin.

○ *Will the project benefit Indian tribes?*

No.

○ *Will the project benefit rural or economically disadvantaged communities?*

There are many low and moderate income homes located near the open canal that have been impacted by the seepage losses and the increase in the water table height. This project will reduce the impacts on them as it reduces the chance for water in their basements and the continuous running of their sub pumps.

○ *Describe how the project will help to achieve these multiple benefits. In your response, please address where the conserved water will go and where it will be used, including whether the conserved water will be used to offset groundwater pumping, used to reduce diversions, used to address shortages that impact diversions or reduce deliveries, made available for transfer, left in the river system, or used to meet another intended use.*

The conserved water will stay in East Canyon and Echo Reservoirs and then be delivered through the Weber River to the DWCCC canal and Weber Basin Water Conservancy District diversions. The water that will be conserved was being lost through seepage, evaporation, and root uptake. The project will eliminate these losses and will require a lower diversion amount in order to deliver the same flow rate to DWCCC users. The conserved water will allow users to meet shortages in drought years and be left in the river system during high water years.

3. *Does the project promote and encourage collaboration among parties in a way that helps increase the reliability of the water supply?*

Yes

○ *Is there widespread support for the project?*

This project has the support of all DWCCC water users, Clearfield, Sunset, Syracuse, West Point, Layton, Kaysville, South Weber, Riverdale, West Haven, and Clinton Cities. Weber Basin Water Conservancy District, Roy Water Conservancy District, Utah Board of Water Resources, Weber River Water Users Association, Weber River Water Rights Committee, UDWR, and the Utah State Engineer's Office are also all in support of projects like this that conserve water and modernize infrastructure.

- *What is the significance of the collaboration/support?*  
The support of the Cities, State of Utah Conservancy Districts, and all water users will allow DWCCC to work quickly through the process to construct the project. The project will be completed on the right of way owned by DWCCC.
- *Is the possibility of future water conservation improvements by other water users enhanced by completion of this project?*  
Yes, this project will allow other users along this area of the canal to pipe their own ditches and install their own sprinkling systems. If they enhanced their own ditches and developed a sprinkling system, they could realize significant water savings as well as the potential for higher crop yields. Over the past five years, other irrigators have seen the improvements that DWCCC has made on their system and have made significant changes in their ditch systems that DWCCC delivers water to.
- *Will the project help to prevent a water-related crisis or conflict? Is there frequently tension or litigation over water in the basin?*  
Yes, as mentioned in the section above, canal deterioration and leaking pipes causes seepage and could result in a breach, which could have a significant impact on residential areas. It will disrupt services to many communities and agricultural users. This project will secure the main canal and reduce the seepage into backyards and fields.

There is always tension when it comes to water. Natural disasters, drought, and un-maintained canals and ditches seem to be the major factors in developing tension within any service area. DWCCC has had its share and will continue to feel the tension, especially as demands for more water come from expanding residential growth. However, in the past few years, there has been more tension than usual. Lack of water due to the drought and seepage losses within the main canal have increased conflicts between residents, businesses, and DWCCC staff.

- *Describe the roles of any partners in the process. Please attach any relevant supporting documents.*  
DWCCC works closely with the Utah Division of Wildlife Resources, Weber Basin Water Conservancy District, and Bureau of Reclamation for the operation of the diversions on the Weber River and reservoirs. The activities are all coordinated through the Weber River Commissioner. See Attachment D – Letters of Support.
4. *Will the project address water supply reliability in other ways not described above?*  
Water supply reliability is often more than just getting water to the field. It is having it available for purposes like recreation, the environment, or to improve water quality. Within the Weber River Watershed Plan of 2014, it says that “The goal of this plan is to recognize both the human and ecological values that the watershed provides and develop strategies to protect and enhance those values.” Allowing for more water to remain in the Weber River, Echo and East Canyon Reservoirs recreational opportunities will be benefited, water quality will be improved, recreation fishing will be sustainable and economic development will continue. This project along with the other past and future

projects that DWCCC has done, or will do, will all contribute the water reliability to improve the sustainability and economic development of the area.

### ***E.1.3. Evaluation Criterion C – Implementing Hydropower (18 Points)***

*If the proposed project includes construction or installation of a hydropower system, please address the following: Describe the amount of energy capacity. For projects that implement hydropower systems, state the estimated amount of capacity (in kilowatts) of the system. Provide sufficient detail supporting the stated estimate, including all calculations in support of the estimate.*

DWCCC has been on the leading edge of very low head hydropower installations in canals in Utah. DWCCC has two very low head hydropower sites in the canal in operation. They have received qualifying conduit exemptions from FERC for both sites. The hydropower site for this application is included on the submitted FERC permit application. No additional permits will be required. Environmental clearances have all been done as well for this site.

DWCCC will install a 2kW vertical axis turbine for this site. This is the same type of turbine that was installed previously. This project will add an additional turbine. These small hydropower generation sites have shown to provide a good source of renewable energy to help offset the 464,366 kWh of electricity that DWCCC uses annually.

*Describe the amount of energy generated. For projects that implement hydropower systems, state the estimated amount of energy that the system will generate (in kilowatt hours per year). Provide sufficient detail supporting the stated estimate, including all calculations in support of the estimate.*

The vertical axis hydropower turbine is rated at 2kW. The hydropower turbine will operate for 4,320 hours; this would be the entire time that the canal in is used from April 15th to October 15th or 183 days. The total power produced by one vertical axis turbine is 8,784-kilowatt hours per year.

$$2\text{kW turbine} * 183 \text{ days} * 24 \text{ hours} = 8,784\text{-kilowatt hours per year}$$

*Describe any other benefits of the hydropower project. Describe and provide sufficient detail on any additional benefits expected to result from the hydropower project, including:*

- *Any expected reduction in the use of energy currently supplied through a Reclamation project.*  
Electricity along the Wasatch Front comes from a variety of sources. One of those sources is the hydropower at Rockport Reservoir which is a Reclamation project. It is unlikely that this project will have any impact on hydropower generation from the Reclamation projects in the area.
- *Anticipated benefits to other sectors/entities.*  
Although this is a small amount of power in the overall scheme of things, the power generated will allow the Company to be more self-reliant and put less demand on the Rocky Mountain Power system. The old saying “every little bit helps” is true in this case, because of the number of small hydro turbines that have been added over the past two years. The energy produced from all of the DWCCC small hydro’s that have been installed add up to over 42,300 kW hours of renewable energy each year. It is estimated that the proposed small vertical axis hydro project will offset approximately 16,800 lbs of CO2 per year.

Over twenty years, when compared with energy produced from a coal power plant, this project will help reduce DWCCC’s carbon footprint by 288,241lbs of CO2. This will help in a small way to reduce the need to use more fossil fuels to meet the demands of the Wasatch Front. This is a reduction to DWCCC’s carbon footprint that is equivalent to:



- *Expected water needs, if any, of the system.*  
The small hydro generator will be placed in the main canal and will be operated by the water that flows through the canal to the users. No additional water will be needed to operate the generator, and the generator will not use any water.

**E.1.4. Evaluation Criterion D – Complementing On-Farm Irrigation Improvements (10 Points)**

*If the proposed project will complement an on-farm improvement eligible for NRCS assistance, please address the following:*

- *Describe any planned or ongoing projects by farmers/ranchers that receive water from the applicant to improve on-farm efficiencies.*
  - *Provide a detailed description of the on-farm efficiency improvements.*  
This project will help provide a safer, more reliable, and more efficient water delivery system for the canal. This will allow farmers to install pipes, sprinklers, and pivots to make their irrigation systems more efficient and will also allow for higher crop yields and less flooding potential in residential neighborhoods that are continually encroaching on the agricultural lands.

DWCCC provides water to approximately 60 different ditches and turnouts. The canal system is elevated so that anyone could connect onto the canal to provide sufficient pressure for an agricultural sprinkler system. This project will not change that ability to provide pressure irrigation to farms. This project will be a positive move toward ensuring that shareholders will receive their shares of water through a canal that is metered, piped, and lined, so that losses are minimal, and conservation is maximized, hydropower is developed, the environment is protected, and the canal is made safe, and water can be delivered efficiently.

The Company is aware of a few local farm projects that are being considered, most of which are ditch expansions, piping of ditches, and conversion of water deliveries from flood irrigation to sprinklers. The following is a list of those who have an interest in on-farm efficiency projects. See Attachment E – On-Farm Signature Page.

<u>Landowner Name</u>	<u>Area</u>	<u>Location</u>
Mike Kolendrianos	66 Acres	West Layton
The Nature Conservancy	500 Acres	West Layton
Roberts Family Farms	78 Acres	West Layton
Day Farms	200 Acres	West Layton

- *Have the farmers requested technical or financial assistance from NRCS for the on-farm efficiency projects, or do they plan to in the future?*  
The four previously listed farm projects are in talks with or have expressed strong interest in participating in NRCS funding programs to accomplish similar goals contained in this application. These projects will allow for better safety and conservation. They have not requested assistance yet from NRCS they plan to in the future.
- *If available, provide documentation that the on-farm projects are eligible for NRCS assistance, that such assistance has or will be requested, and the number or percentage of farms that plan to participate in available NRCS programs.*  
The on-farm assistance has not been requested from NRCS. They have a strong interest to meet with NRCS to develop high-efficiency irrigation systems.
- *Applicants should provide letters of intent from farmers/ranchers in the affected project areas.*  
The farmers have signed a signature page that can be found in Attachment E – On-Farm Signature Page. This form indicates the name, signature, and acreage of those irrigators benefiting from the project who are interested in applying for NRCS assistance.
- *Describe how the proposed WaterSMART project would complement any ongoing or planned on-farm improvement.*
  - *Will the proposed WaterSMART project directly facilitate the on-farm improvement? If so, how? For example, installation of a pressurized pipe through WaterSMART can help support efficient on-farm irrigation practices, such as drip-irrigation.*

OR
  - *Will the proposed WaterSMART project complement the on-farm project by maximizing efficiency in the area? If so, how?*  
Yes, the proposed project will complement the on-farm project in the following ways:
    - Less tail water wasting from flood irrigation
    - Better metering and monitoring of system
    - Innovation for better technologies such as sprinkler and drip irrigation methods
- *Describe the on-farm water conservation or water use efficiency benefits that would result from the on-farm component of this project.*
  - *Estimate the potential on-farm water savings that could result in acre-feet per year. Include support or backup documentation for any calculations or assumptions.*  
Based upon calculation and information already submitted as part of this application, returned savings in water for agriculture would be between 8 to 10 percent water savings, besides creation of additional water resources through conservation that will benefit future water development needs. Better use of the water will come about by reducing water wasting and losses due to seepage. This documentation was outlined within the Quantifiable Water Savings section in detail.

### ***E.1.5. Evaluation Criterion E – Department of the Interior Priorities (10 Points)***

*Address those priorities that are applicable to your project. Points will be allocated based on the degree to which the project supports one or more of the priorities listed, and whether the connection to the Priority(ies) is well supported in the proposal.*

1. *Creating a conservation stewardship legacy second only to Teddy Roosevelt.*

Teddy Roosevelt said, “The conservation of natural resources is the fundamental problem. Unless we solve that problem, it will avail us little to solve all others.” DWCCC’s proposed project will contribute to solving this “fundamental problem” by enclosing it’s unlined and open canal. By enclosing their system, it will allow the Company to manage approximately 34,000 acre-feet of water better, and conserve 794 acre-feet of water.

Concern over water conservation is most prevalent in the western United States, and especially in Utah – the second driest state in the nation. Because of drought, water conservation in Utah is something that is taken seriously by water distributors and users throughout the state. Although DWCCC can do nothing to stop the drought, the Company actively seeks ways to reduce the disastrous effects of drought on the State, and by extension, their water users. By enclosing their unlined and open canal system, DWCCC is protecting Utah’s water resources and ensuring that these resources are made available to sustain those living within their service area.

2. *Utilizing our natural resources.*

The proposed project will contribute to ensuring American Energy is available to meet our security and economic needs by installing a 2kW vertical axis turbine. The small hydro generator will be placed in the main canal and will be operated by the water that flows through the canal to the users. No additional water will be needed to operate the generator. DWCCC’s small hydropower generation sites have shown to provide a good source of renewable energy to help offset the 464,366 kWh of electricity that the Company uses annually. Although this is a small amount of power overall, the generated power will allow the Company to be more self-reliant and put less demand on the Rocky Mountain Power system. The produced energy from all of the DWCCC small hydro units that have been installed adds up to over 42,300 kW hours of renewable energy.

3. *Modernizing our infrastructure.*

Through this grant opportunity, DWCCC has the opportunity to improve their water reliability using modern infrastructure design. Achieving this will reduce water loss and increase safety. Modern infrastructure design extended useful life and requires minimal maintenance.

### ***E.1.6. Evaluation Criterion F – Implementation and Results (6 Points)***

#### **E.1.6.1. Subcriterion No. F.1 – Project Planning**

*Does the applicant have a Water Conservation Plan and/or System Optimization Review (SOR) in place? Please self-certify, or provide copies of these plans where appropriate to verify that such a plan is in place.*

Yes. DWCCC completed a System Optimization Review (SOR) in 2013. The SOR was reviewed and approved by Reclamation at that time. The SOR was updated in 2017 to account for recent improvements on the canal. See Attachment F – SOR Project Priorities for a list of DWCCC’s priority projects.

The DWCCC also has a Water Conservation Plan in place. This plan was updated in 2017 and submitted to the Utah Division of Water Resources for approval (Copies of both of these plans can be made available upon request).

*Provide the following information regarding project planning:*

- 1) *Identify any district-wide, or system-wide, planning that provides support for the proposed project. This could include a Water Conservation Plan, SOR, or other planning efforts done to determine the priority of this project in relation to other potential projects.*

DWCCC completed a SOR for the 17.2-mile canal system in October 2013 and updated the SOR in 2017. The SOR planning process allowed DWCCC to evaluate the entire delivery system and give them direction on priority projects that can allow for the highest water conservation renewable energy production.

The Weber River Waters Users' Association developed a "Water Management and Conservation Plan" in 2009 with a Reclamation grant, addressing the needs for the Weber River Basin. In Chapter 4 of the Weber River Basin Plan of 2009, it indicates several conservation goals that they would like to implement, most of which this project will help satisfy. The specific goal that this project will help implement is to reduce outdoor use through monitoring and more efficient application and delivery of the water.

DWCCC has a Conservation Plan that includes aspects of this project. They also have Emergency Action and Response Plans, and an Operation and Management Plan, which includes responses during times of drought or water shortage conditions. They also participated in developing a conservation plan with the Weber River Water Users' Association, which has recently been updated (Copies of these plans can be made available upon request).

- 2) *Describe how the project conforms to and meets the goals of any applicable planning efforts, and identify any aspect of the project that implements a feature of an existing water plan(s).*

The Weber River Water Users' Association has a number of goals and issues that this project will help fulfill. They have been addressed previously and are listed in Criterion D. Other plans that this project is consistent with is the State Regional Water Plan for the Weber River Basin. In the "Weber River Basin Planning for the Future" document prepared in September 2009, it states:

*"In order to meet future water needs, water planners and managers within the Weber River Basin must promote effective water conservation programs and measures. They must also ensure that agricultural water conversions are transferred to meet both indoor and outdoor urban water needs and implement innovative water management strategies. This, along with carefully planned water developments, will secure sufficient water for the future."*

#### E.1.6.2. Subcriterion No. F.2 – Performance Measures

*Provide a brief summary describing the performance measure that will be used to quantify actual benefits upon completion of the project (e.g., water saved or better managed, energy generated or saved).*

There are two areas of this project where performance measures can be documented and quantified to show the actual benefits upon completion of the project. These include renewable energy that will be generated and water that is saved.



**Energy Generated Performance Measures**

The energy produced by the hydropower turbine will be metered. The metered output will be recorded monthly and compared to the estimation of power generation in this application. This information will be provided in an annual report to the DWCCC Board of Directors.

**Water Savings and Better Water Management Performance Measures**

The System Optimization Review identifies the water tracking and water usage procedures for the DWCCC canal. These are the same procedures that were followed to calculate the water losses in this application. The same procedures will be used to measure the actual water saved/better managed after the completion of this project.

**A season-long inflow and outflow summary of the lower portions of the canal will be taken** There is a meter on the main canal, called the “Roy Flume,” at the start of the lower portion of the canal. DWCCC currently has ten continuously reading meter turnouts and eleven turnouts with weirs and flumes along the lower part of the canal. Daily flow measurements at each turnout and flow measuring device readings are taken and recorded. Each month, the flow measurements will be taken and used to determine how much water has passed the Roy Flume, how much water went down each turnout, and how much water was lost to the system for that month. The water lost for the entire irrigation season will be compared to the water savings calculations in this application. A portion of the gate usage tracking sheet is shown in Figure 3, Daily Turnout Measurement Sheet.

The individual gates are combined into a summary of all gates on the lower canal. The sheet in Figure 4, Summary Sheet is a sample of how the information will be recorded. This summary sheet will be completed the 15th of each month and reviewed by the DWCCC Manager.

**E.1.6.3. Subcriterion No. F.3 – Readiness to Proceed**

*Describe the implementation plan of the proposed project. Include an estimated project schedule that show the stages and duration of the proposed work, including major tasks, milestones, and dates.*

**February 2020 – September 2021**

Contract and Environmental: March 2020 – September 2021

Design: April – October 2021

**October 2021 – September 2022**

Advertising and Bidding: November 2021

Possibly start construction: November 2021 – April 2022

**October 2022 – September 2023**

Figure 4 Daily Turnout Measurement Sheet

Byram Estates	Measurements (CFS)	Estimated Delivery (CFS)	Total Estimated Delivered (Acre-Feet)	Flow Alotment (CFS per day)	Total Alotment (Acre-Feet)	Running Total Available (Acre-Feet)
April 15, 2013				-	-	-
April 16, 2013				4.64	9.19	9.19
April 17, 2013				4.64	18.39	18.39
April 18, 2013				4.64	27.58	27.58
April 19, 2013				4.64	36.78	36.78
April 20, 2013				4.64	45.97	45.97
April 21, 2013				4.64	55.17	55.17
April 22, 2013				4.64	64.36	64.36
April 23, 2013				4.64	73.56	73.56
April 24, 2013				4.64	82.75	82.75
April 25, 2013				4.64	91.95	91.95
April 26, 2013				4.64	101.14	101.14
April 27, 2013				4.64	110.34	110.34
April 28, 2013				4.64	119.53	119.53
April 29, 2013				4.64	128.73	128.73
April 30, 2013				4.64	137.92	137.92

Figure 4 Summary Sheet

Gate	Estimated Water Delivered (Acre-Feet)	Water Allocated To Date (Acre-Feet)	Water Allocated For Year (Acre-Feet)	Difference Column 1-2 (Acre-Feet)	Total Remaining for Year Column 3-1 (Acre-Feet)
WBW CD Gateway					
WBW CD Roy Pond					
Byram Estates					
North Flume					
North 10					
North 11					
Roy WCD					
Sunset Res					
Gate 03A					
Gate 8					
Gate 11					
Gate 15					
Gate 16					
Gate 18					
Gate 19					
Gate 23E					
Gate 23W					
Gate 24A					
Gate 25					
Gate 27					
Gate 30IF					
Gate 30IS					
Gate 33					
Layton Res					
West 05 Butler					
West 05 Kap					
Totals					

If needed continue construction: October 2022 – April 2023  
Construct Hydro: May – June 2023  
Project closed out: September 2023

*Describe any permits that will be required, along with the process for obtaining such permits.*

Permits from local communities may be required based on needed access over trails or within roads if street cutting is required. The FERC permit for the hydropower unit has been applied for and received as part of a different project.

*Identify and describe any engineering or design work performed specifically in support of the proposed project.*

Master planning for the project has been done as part of the System Optimization Review to identify pipe sizing and design flow rates.

*Describe any new policies or administrative actions required to implement the project.*

None.

*Describe how the environmental compliance estimate was developed. Has the compliance cost been discussed with the local Reclamation office?*

The environmental document for this project has been completed, and the FONSI signed as part of another WaterSMART project. We have included costs to review and update the approved document for Reclamation.

#### ***E.1.7. Evaluation Criterion G – Nexus to Reclamation Project Activities (4 Points)***

*Is the proposed project connected to Reclamation project activities? If so, how? Please consider the following:*

The Weber Basin Water Conservancy District is a major shareholder in DWCCC and supplies water to Reclamation projects. Water supplies for the DWCCC canal came from the East Canyon and Echo Reservoirs, which are both Reclamation projects.

- *Does the applicant receive Reclamation project water?*  
Yes. DWCCC receives water from Echo and East Canyon Reservoirs, which are Reclamation projects.
- *Is the project on Reclamation project lands or involving Reclamation facilities?*  
No.
- *Is the project in the same basin as a Reclamation project or activity?*  
Yes, the project is located in the Weber River Basin where the Echo and East Canyon Reservoirs are located.
- *Will the proposed work contribute water to a basin where a Reclamation project is located?*  
Yes, the project will conserve water that can now be stored up in the Echo and East Canyon Reservoirs, contributing to the storage and potential flows within the Weber River.

*Will the project benefit any tribe(s)?*

No.

#### ***E.1.8. Evaluation Criterion H – Additional Non-Federal Funding (4 Points)***

*State the percentage of non-federal funding provided using the following calculation: Non-Federal Funding divided by Total Project Cost.*

$$\frac{\$1,641,000.00 - \text{Non-Federal Funding}}{\$2,741,000.00 - \text{Total Project Cost}}$$

$$= 60\%$$

## Project Budget

### Funding Plan and Letters of Commitment

*Describe how the non-Federal share of project costs will be obtained.*

DWCCC will use money from their own Construction Reserve Account and operation funds as well as make application for a loan from Division of Water Resources for their contribution.

*Identify the sources of the non-Federal cost-share contribution for the project, including:*

- *Any monetary contribution by the applicant towards the cost-share requirement and source of funds (e.g., reserve account, tax revenue, and/or assessments).*

DWCCC will use money from their own Construction Reserve Account and operation funds as well as make application for a loan from Division of Water Resources for their contribution.

- *Any costs that will be contributed by the applicant.*  
None.
- *Any third party in-kind costs (i.e., goods and services provided by a third party).*  
None.
- *Any cash requested or received from other non-Federal entities.*  
None.
- *Any pending funding requests (i.e., grants or loans) that have not yet been approved, and explain how the project will be affected if such funding is denied.*

DWCCC will make application to Division of Water Resources next year for a loan. It is anticipated that DWCCC will have their own funds available to prepare the design and environmental update in order to facilitate the loan requirements from the Division.

*In addition, identify whether the budget proposal includes any project costs that have been or may be incurred prior to award. For each costs, describe:*

- *The project expenditure and amount.*  
None
- *The date of cost incurrence.*  
None
- *How the expenditure benefits the Project.*  
None

### Budget Proposal

Table 1 Total Project Cost Table

Source	Amount
Federal Funding	\$1,100,000.00
Applicant Contribution	\$1,641,000.00
Value of third-party contributions	\$0.00
<b>Total Project Cost</b>	<b>\$2,741,000.00</b>

Table 2 Itemized Budget

Budget Item Description	Computation		Quantity Type	Total Cost
	\$/Unit	Quantity		
<b>Salaries &amp; Wages</b>	\$0.00	-	-	\$0.00
<b>Fringe Benefits</b>	\$0.00	-	-	\$0.00
<b>Travel</b>	\$0.00	-	-	\$0.00
<b>Equipment</b>	\$0.00	-	-	\$0.00
<b>Supplies and materials</b>	\$0.00	-	-	\$0.00
<b>Contractual /Construction</b>				
Mobilization	\$55,000.00	1	LS	\$55,000.00
Traffic Control	\$19,560.00	1	LS	\$19,560.00
Storm Water Pollution Prevention Plan (SWPPP)	\$48,640.00	1	LS	\$48,640.00
Clear and Grub	\$44,610.00	1	LS	\$44,610.00
8'x6' Precast Box Culvert	\$555.00	2060	LF	\$1,143,300.00
66" RCP	\$263.00	1500	LF	\$394,500.00
Asphalt Demolition and Removal	\$6.70	2100	SY	\$14,070.00
Remove Existing Pipe	\$35.00	2625	LF	\$91,875.00
Imported Backfill Material	\$25.00	4591	CY	\$114,775.00
Foundation Material and Leveling Course	\$11.00	3560	LF	\$39,160.00
Untreated Base Course	\$21.00	630	Tons	\$13,230.00
Hot-mix Asphalt	\$94.00	480	Tons	\$45,120.00
Surface Restoration	\$16,750.00	1	LS	\$16,750.00
Pothole Utilities	\$280.00	40	HR	\$11,200.00
Turnouts	\$37,630.00	2	EA	\$75,260.00
Transition Structures	\$24,910.00	3	EA	\$74,730.00
Trail Restoration, 8 FT Wide 3" Thick	\$17.00	100	LF	\$1,700.00
Road Crossing Traffic Control	\$6,260.00	3	EA	\$18,780.00
Road Crossing Bridge and Asphalt Demolition	\$10,190.00	3	EA	\$30,570.00
Road Crossing Granular Borrow Backfill	\$17.00	660	Tons	\$11,220.00
Road Crossing Untreated Base Course	\$21.00	480	Tons	\$10,080.00
Road Crossing Hot-mix Asphalt	\$140.00	180	Tons	\$25,200.00
Road Crossing Temporary Asphalt Patch	\$210.00	270	Tons	\$56,700.00
Road Crossing Asphalt Painting	\$1,490.00	3	EA	\$4,470.00
Hydropower Generation	\$40,000.00	1	EA	\$40,000.00
Design Engineering	\$168,000	7%	EA	\$168,000.00
Construction Engineering	\$168,000	7%	EA	\$168,000.00
Reporting	\$125.00	12	HR	\$1,500.00
Environmental Document (Time to update needed.)	\$125.00	24	HR	\$3,000.00
<b>Other</b>				
<b>Total Direct Costs</b>				<b>\$2,741,000.00</b>
<b>Indirect Costs</b>				
Type of rate	Percentage	\$base		<b>\$0.00</b>
<b>Total Estimated Project Costs</b>				<b>\$2,741,000.00</b>

## Budget Narrative

---

### *Salaries and Wages*

No DWCCC Salaries or Wages will be included. All services will be contracted. DWCCC's staff time will be over and above the cost of the project and will not be counted toward the project cost.

### *Fringe Benefits*

No fringe benefits will be required.

### *Travel*

No travel will be necessary.

### *Equipment*

Equipment will be part of the contracted portion of the project.

### *Materials and Supplies*

Materials and Supplies will be part of the contracted portion of the project and will be documented as required.

### *Contractual*

In order to determine unit costs which were included in the cost estimate for this project, DWCCC relied upon contract unit prices from a similar project bid in October 2016 and October 2018. Items bid match the bid items from these projects.

DWCCC will bid the construction portion of the project to several prequalified construction companies. The contractual costs shown are estimates for each of the components to furnish and install all the equipment. Generally, the low bidder will be selected based on a determination of acceptable qualifications.

Contractual cost includes design at approximately 7 percent, and construction observation at approximately 7 percent and a contractor will be hired to install and build all other items listed. The project will go through the Company's required procurement and bidding process.

### *Third-Party In-Kind Contributions*

N/A

### *Environmental and Regulatory Compliance Costs*

The environmental document for this project was included in a previously completed report and has been approved by Reclamation. Reclamation may require additional information. Therefore, 24 hours at \$125.00 = \$3,000 will be included in this project.

### *Other Expenses*

No other expenses are included.

### *Indirect Costs*

No indirect costs are included.

### *Total Costs*

DWCCC Portion: \$1,641,000      Fed Portion: \$1,100,000      Total: \$2,741,000

## Environmental and Cultural Resources Compliance

---

*Will the proposed project impact the surrounding environment (e.g., soil [dust], air, water [quality and quantity], animal habitat)? Briefly describe all earth-disturbing work and any work that will affect the air, water, or animal habitat in the project area. Explain the impacts of such work on the surrounding environment and any steps that could be taken to minimize the impacts.*

DWCCC has an approved Environmental Report for this project. Impacts will be those associated with enclosing the open canal and replacing metal pipe. The proposed project improvements will take place entirely within the existing canal corridor. In the past, similar projects have had minimal impacts. This proposed area of the canal to be improved has established access allowing work within the recognized easement of the project. The surface vegetation will be restored upon completion of the project.

*Are you aware of any species listed or proposed to be listed as a Federal threatened or endangered species, or designated critical habitat in the project area? If so, would they be affected by any activities associated with the proposed project?*

After having completed the Environmental Document and submitting it to Reclamation, DWCCC is not aware of any impacts concerning threatened or endangered species in this area.

*Are there wetlands or other surface waters inside the project boundaries that potentially fall under CWA jurisdiction as “Waters of the United States?” If so, please describe and estimate any impacts the proposed project may have.*

After having completed the Environmental Document and submitting it to Reclamation, DWCCC is not aware of any impacts to wetlands in this area.

*When was the water delivery system constructed?*

The canal system was originally built in 1884 with concrete liner constructed around 1910 to 1920. Many improvements have been made over the years. As part of the completed environmental document, the required historical documentation for the canal has been finalized.

*Will the proposed project result in any modification of or effects to, individual features of an irrigation system (e.g., headgates, canals, or flumes)? If so, state when those features were constructed and describe the nature and timing of any extensive alterations or modifications to those features completed previously.*

The proposed project will pipe 1,685 feet of old concrete liner and replace 1,875 feet of deteriorated metal pipe through Sunset, Clearfield, and Layton with 8'x6' precast concrete box culvert and 66-inch reinforced concrete pipe and will add a 2kW vertical axis hydropower turbine near the DWCCC shop and install two meters. The open canal was excavated in the 1920s and is difficult to maintain and is in terrible condition; hence, it needs to be piped. The metal pipe was installed in 1999 and 2002. As part of the completed environmental document, the required historical documentation for the canal has been completed.

*Are any buildings, structures, or features in the irrigation district listed or eligible for listing on the National Register of Historic Places? A cultural resources specialist at your local Reclamation office or the State Historic Preservation Office can assist in answering this question.*

After having completed the Environmental Document and submitting it to Reclamation, DWCCC is not aware of any building, structures or features that would qualify. A cultural resource inventory was completed as part of the submitted environmental document.

*Are there any known archeological sites in the proposed project area?*

After having completed the Environmental Document and submitting it to Reclamation, DWCCC is not aware of any impacts to or locations of archeological sites.

*Will the proposed project have a disproportionately high and adverse effect on low income or minority populations?*

No, the project will not require a right-of-way or relocations from adjacent properties and will have no impact on residential properties or uses within the study area.

*Will the proposed project limit access to and ceremonial use of Indian sacred sites or result in other impacts on tribal lands?*

No.

*Will the proposed project contribute to the introduction, continued existence, or spread of noxious weeds or non-native invasive species known to occur in the area?*

No. The project will help with the control of noxious weeds and invasive trees. The project will allow DWCCC to have better access to the canal for weed control.



## Required Permits or Approvals

---

*Applicants must state in the application whether any permits or approvals are required and explain the plan for obtaining such permits or approvals.*

The vertical axis hydropower turbine will require a conduit exemption from FERC. This permit from FERC has been applied and approved as part of another WaterSMART project. No additional permits will be required from Rocky Mountain Power since this turbine will be added in series to existing turbines.

A street cutting permit will be required from Sunset City for the 1300 North street crossing and Layton City for the 1000 West and 800 West crossings.

## Letters of Project Support

---

*Include letters from interested stakeholders supporting the proposed project.*

Letters of Support from the following are included in Attachment D – Letters of Support:

- Trout Unlimited – Paul Burnett, Weber River Project Coordinator
- Utah Division of Wildlife Resources – Clint Brunson, Aquatics Habitat Restoration Biologist
- Weber Basin Water Conservancy District – Darren Hess, PE, Assistant General Manager/COO
- Weber River Water Users Association – Theo G. Cox, President

## Official Resolution

---

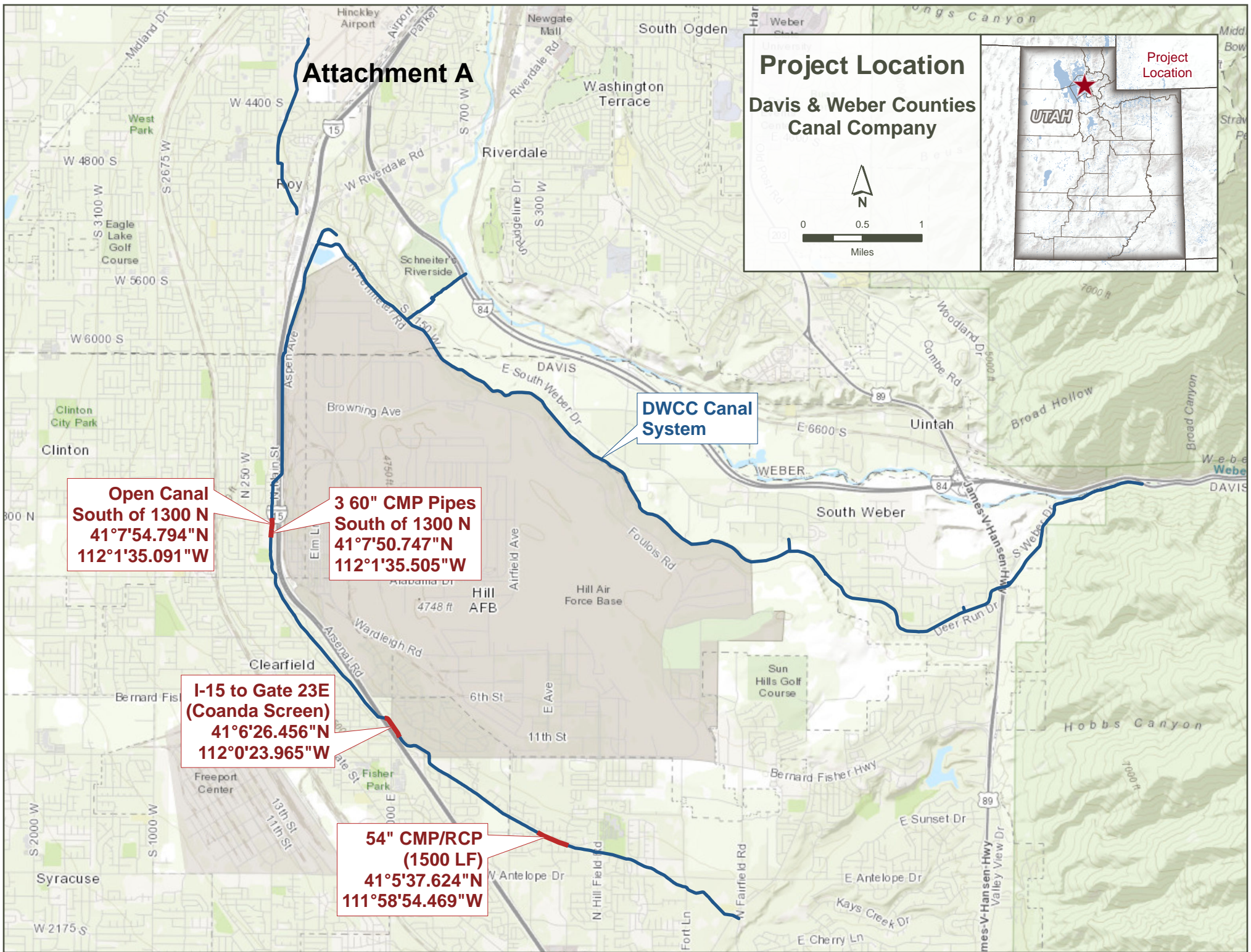
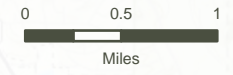
*Include an official resolution adopted by the applicant's board of directors or governing body. The official resolution may be submitted up to 30 days after the application deadline.*

The Official Resolution for the Davis and Weber Counties Canal Company project will be submitted within 30 days after the application deadline.

# Attachment A

## Project Location

Davis & Weber Counties Canal Company



**Open Canal  
South of 1300 N  
41°7'54.794"N  
112°1'35.091"W**

**3 60" CMP Pipes  
South of 1300 N  
41°7'50.747"N  
112°1'35.505"W**

**I-15 to Gate 23E  
(Coanda Screen)  
41°6'26.456"N  
112°0'23.965"W**

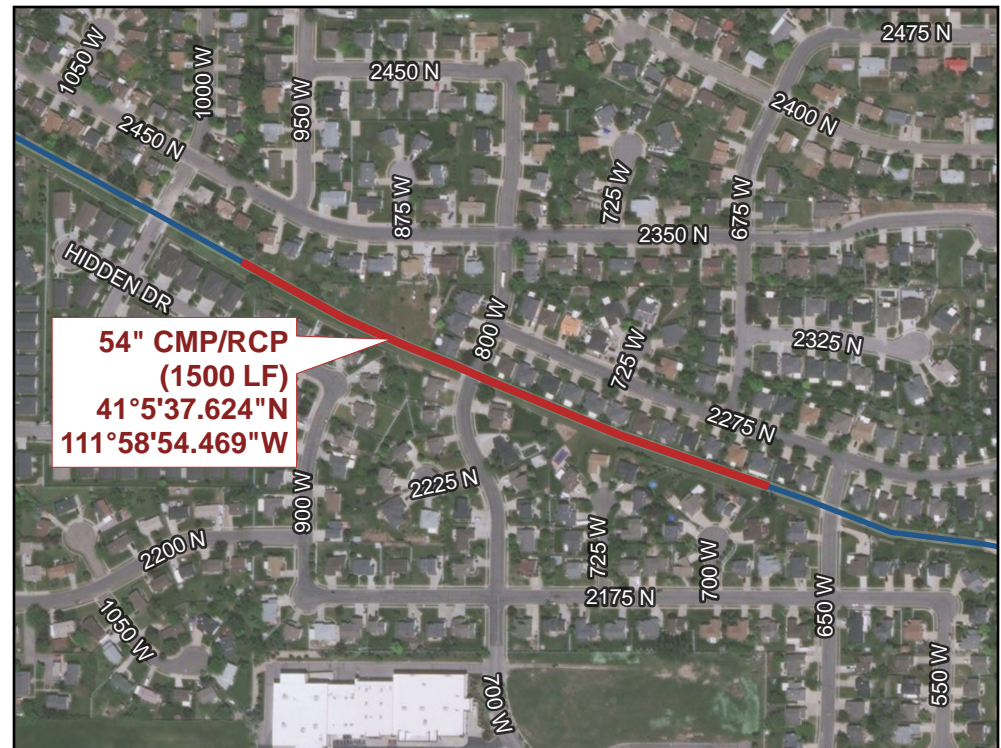
**54" CMP/RCP  
(1500 LF)  
41°5'37.624"N  
111°58'54.469"W**

# Attachment B



**Open Canal  
 South of 1300 N**  
 41°7'54.794"N  
 112°1'35.091"W

**3 60" CMP Pipes  
 South of 1300 N**  
 41°7'50.747"N  
 112°1'35.505"W



# RECLAMATION

*Managing Water in the West*

## Water Conservation Verification of Davis & Weber Counties Canal Company Canal Piping Project

*Davis County, UT near Salt Lake City, UT  
Upper Colorado Region*



U.S. Department of the Interior  
Bureau of Reclamation  
Technical Service Center  
Water, Environmental, & Ecosystems Division  
Water Resources Planning & Operations Support Group

May 2017

# Water Conservation Verification of Davis & Weber Counties Canal Company Canal Piping Project

*Davis County, UT near Salt Lake City, UT  
Upper Colorado Region*

**Brandon House, Hydrologic Engineer  
Mark Spears, Hydraulic Engineer**



**U.S. Department of the Interior  
Bureau of Reclamation  
Technical Service Center  
Water, Environmental, & Ecosystems Division  
Water Resources Planning & Operations Support Group**

**May 2017**

# Acronyms and Abbreviations

ADCP	acoustic Doppler current profiler
AFY	acre-feet per year [L <sup>3</sup> /T]
cfs	cubic feet per second [L <sup>3</sup> /T]
DWCCC	Davis & Weber Counties Canal Company
ET	Evapotranspiration
ft	feet [L]
hrs	hours [T]
in	inches [L]
mi	miles [L]
PVC	Polyvinyl Chloride
Reclamation	Bureau of Reclamation
SMART	Sustain and Manage America's Resources for Tomorrow
WEEG	Water and Energy Efficiency Grant

## Contents

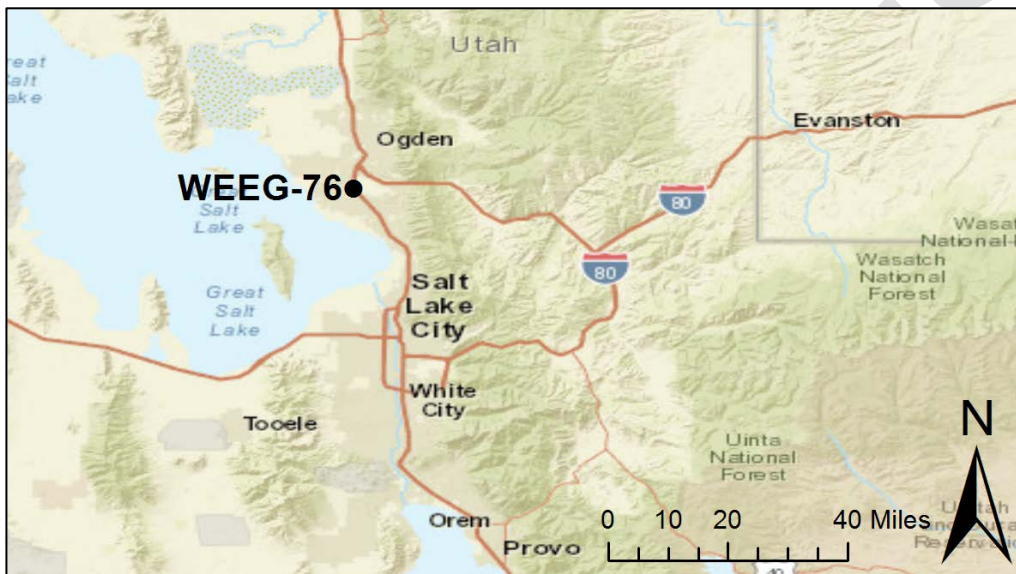
<b>Introduction</b> .....	<b>3</b>
<b>Background</b> .....	<b>4</b>
<b>Methods</b> .....	<b>4</b>
Data Collection .....	5
Measurement Equipment Theory.....	5
Measurement Site Selection & Description .....	6
Data Processing .....	9
<b>Results</b> .....	<b>10</b>
<b>Discussion</b> .....	<b>11</b>
<b>Conclusions</b> .....	<b>12</b>
<b>Bibliography</b> .....	<b>13</b>
<b>Appendix A</b> .....	<b>14</b>

## List of Figures

Figure 1 – Canal piping project vicinity in central-northern Utah .....	3
Figure 2 - Reach of Interest. The open, concrete-lined canal reach which is to be piped with WEEG funds. Surface water flow is from north to south. The reach is 950 ft long. ....	4
Figure 3 - Schematic depiction of the inflows and outflows of the reach of interest. The lumped outflows of seepage and ET can be estimated by measuring inflow and outflow. ....	5
Figure 4 – Teledyne RD Instruments' StreamPro ADCP. Similarly equipped to model used. [ <i>Teledyne Marine</i> , 2004]. ....	5
Figure 5 - Schematic depiction of the StreamPro collecting a measurement and the resulting discretization of the flow into cells. The colors of the cells represent varying velocities. The discharge through the area around the perimeter of the cells, in blue, is estimated. Flow direction in the canal is into the page. ....	6
Figure 6 - Location of discharge measurements. The blue line represents the reach of canal between the upstream and mid-stream discharge measurement locations – the measured reach. The measured reach is approximately 0.17 mi long. ....	7
Figure 7 - Upstream measurement location. Note vegetation growing in cracks of fractured concrete liner. ADCP is in boom position. ....	8
Figure 8 – Mid-stream measurement location data collection setup. Note highly fractured concrete liner. ADCP is mounted in boom position. ....	8
Figure 9 - Downstream measurement location. Black line indicates approximate location of measurement. ....	9
Figure 10 - Change in water depth adjusted for increasing atmospheric pressure and zeroed at a common time. Dashed lines bound canal discharge measurements at the color corresponding location. ....	10

## **Introduction**

Davis & Weber Counties Canal Company (DWCCC) received funds for a surface water conservation project from the Bureau of Reclamation's (Reclamation) Fiscal Year 2016 WaterSMART Water and Energy Efficacy Grants (WEEG) cost-share program under funding opportunity number R16-FOA-DO-004 – reference code WEEG-76. The project is located in central-northern UT, 26 miles (mi) north of Salt Lake City, UT in Clearfield, UT (Figure 1). DWCCC will use the funds to pipe 950 feet (ft) of open, concrete-lined canal and construct a small hydropower station. DWCCC estimates that piping the canal will conserve 144 acre-feet per year (AFY) of surface water, and the hydropower station will generate 21,600 kilowatt hours of power per year.



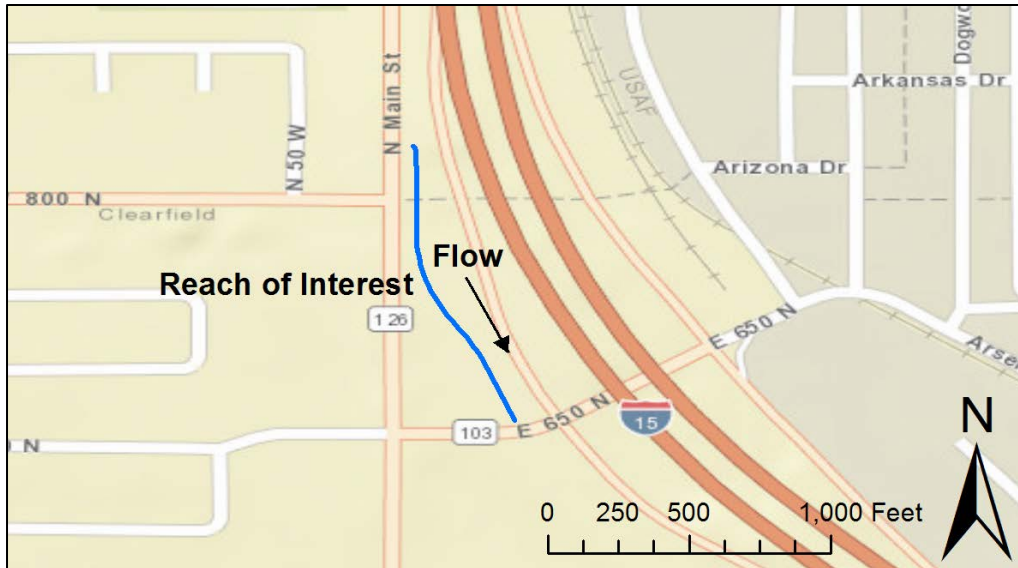
**Figure 1 – Canal piping project vicinity in central-northern Utah**

Every year after WEEG recipient selection is completed, several recipients are selected to have a Reclamation representative visit the recipient and verify the amount of water expected to be conserved by the project. Verification is done to improve WEEG selection criteria for future funding opportunities and the results do not affect receipt of funds from current or future grants.

Verification of hydropower generation is outside the scope of this project; therefore, this work will focus on the surface water conservation realized from piping the 950 ft reach of canal – the reach of interest (Figure 2). The reach of interest will have the current 100-year-old concrete liner replaced with a reinforced concrete box culvert. Piping canals is known to conserve surface water by (1) eliminating evapotranspiration (ET) from the canal water surface and from plants near the canal and (2) eliminating seeping of water from the canal into the material surrounding the canal [Jensen *et al.*, 1967]



## Water Conservation Verification of Davis & Weber Counties Canal Company Canal Piping Project



**Figure 2 - Reach of Interest.** The open, concrete-lined canal reach which is to be piped with WEEG funds. Surface water flow is from north to south. The reach is 950 ft long.

## Background

DWCCC presents their method used to estimate current surface water losses from seepage and ET over the reach of interest in their grant application. From analysis of multiple years of supply and delivery data, it is estimated that the system-wide losses per foot of canal are 0.156 AFY. DWCCC estimates the reinforced concrete pipe will be 97% effective at mitigating surface water losses. As 950 ft of canal is to be converted to pipe, an expected 144 AFY of surface water will be conserved.

## Methods

To estimate the amount of water expected to be conserved by lining the reach of interest, Reclamation used a method based on the continuity equation. The continuity equation states that, assuming no change in storage, the discharge of water entering a system (inflow) must be equal to the discharge of water exiting the system (outflow) (Figure 3). In this case the "system" is the reach of interest. It is assumed that the water entering the canal via the upstream end is the only inflow. Other possible inflows include precipitation and groundwater; however, the assumption that these inflows are, at the very least, negligible is likely valid as: no precipitation occurred during the measurement and the groundwater table in the region is below the canal bottom elevation. Seepage, ET, and the volume of water exiting the reach of interest are assumed to be the only outflows. The lumped outflows of seepage and ET can be estimated by measuring the upstream and downstream discharges (Figure 3).

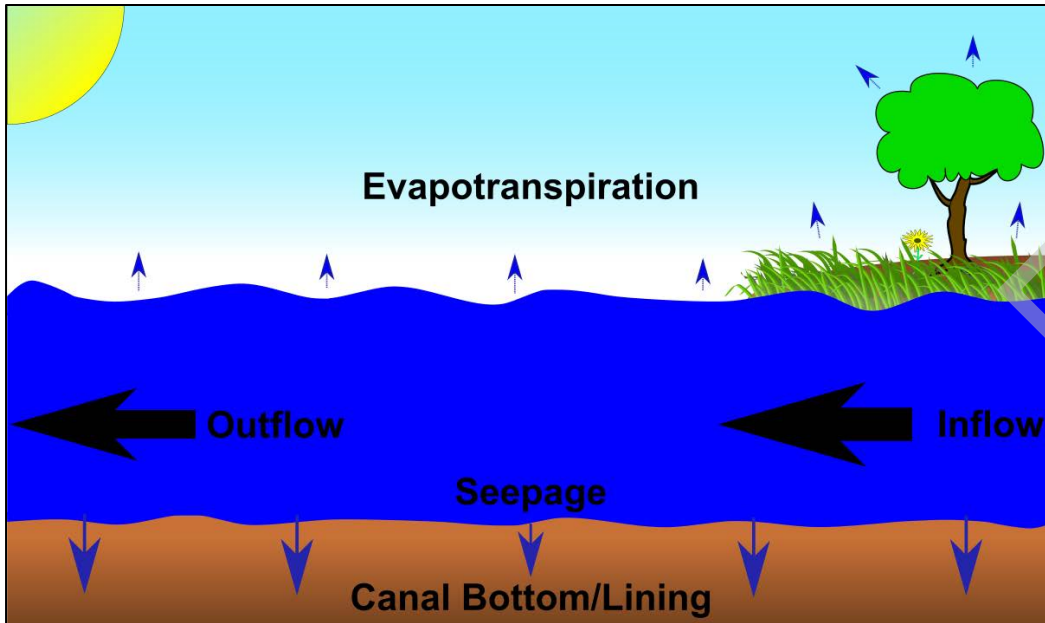


Figure 3 - Schematic depiction of the inflows and outflows of the reach of interest. The lumped outflows of seepage and ET can be estimated by measuring inflow and outflow.

## Data Collection

### Measurement Equipment Theory

Discharge measurements were made using a StreamPro (Teledyne RD Instruments) piston-type, acoustic Doppler current profiler (ADCP) (Figure 4) and companion data collection software *WinRiver II* (Teledyne RD Instruments). The ADCP measures water velocity at discrete depth intervals as it traverses the canal profile. Velocities are measured by emitting high frequency sound waves and measuring the frequency shift of the reflected wave. Depth of the velocity measurement is calculated by the two-way travel time of the wave. The cross section of the canal, perpendicular to the direction of flow, is discretized into cells. The velocity within each cell is approximated from multiple measurements by the ADCP. After a traverse is complete, the discharge over the measured portion of the canal cross section can be calculated by summing the products of the velocity and area of each cell (Figure 5). Due to ADCP measurement constraints, portions of flow through the top, bottom, and sides of the canal cross-section cannot be measured. The discharge through these areas is approximated. Discharge near the banks is estimated by assuming a triangular cross-sectional area with dimensions of the depth measured by the ADCP near the bank and the user measured distance from



Figure 4 – Teledyne RD Instruments' StreamPro ADCP. Similarly equipped to model used. [Teledyne Marine, 2004].

## Water Conservation Verification of Davis & Weber Counties Canal Company Canal Piping Project

the ADCP to the bank. The velocity through the triangular area is approximated using the average velocity in the nearest ensemble of cells and a scaling factor of 0.35 [Teledyne RD Instruments, 2008]. The velocity through the top and bottom is estimated by fitting a best-fit power curve to the measured velocity profile. The curve is then extrapolated to the water surface and canal bottom. The top and bottom areas are calculated by user entered values and ADCP measurements.

When collecting measurements, it is desirable for the canal to be straight and unobstructed for approximately 10x the canal width upstream of the measurement location. This allows flow to be conditioned by reducing turbulence and interaction with the hyporheic zone<sup>1</sup>. Absence of vegetation also increases measurement accuracy. Vegetation can cause turbulence and interfere with sound waves generated by the ADCP.

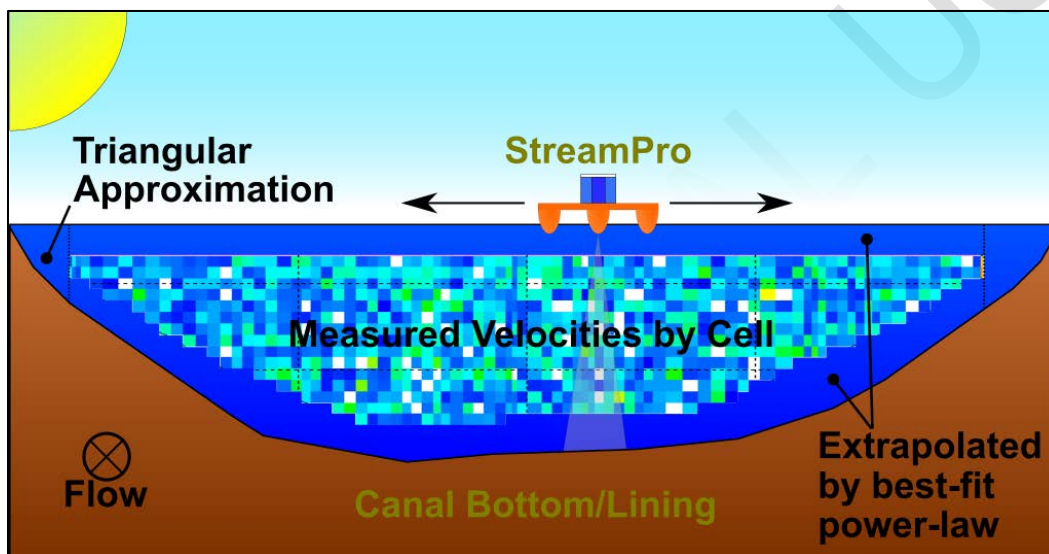
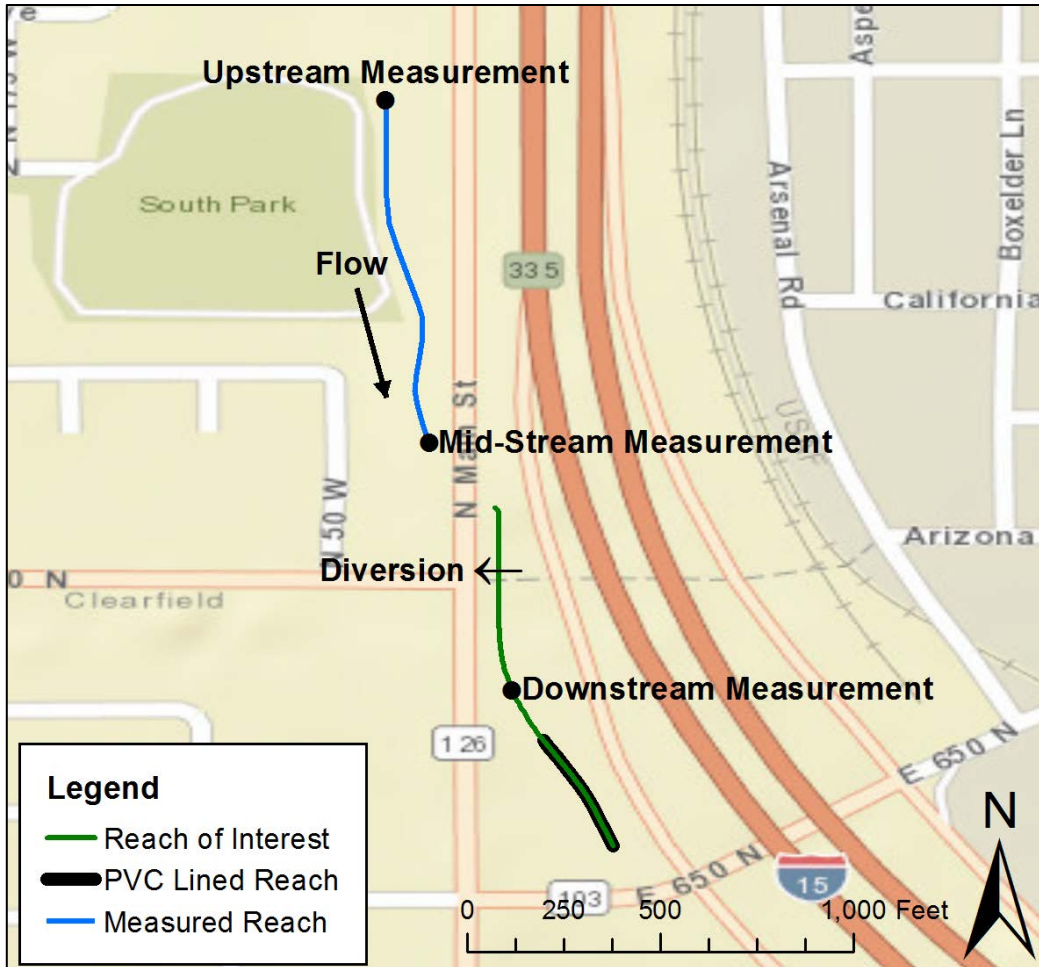


Figure 5 - Schematic depiction of the StreamPro collecting a measurement and the resulting discretization of the flow into cells. The colors of the cells represent varying velocities. The discharge through the area around the perimeter of the cells, in blue, is estimated. Flow direction in the canal is into the page.

### Measurement Site Selection & Description

Reclamation Hydrologic Engineer, Brandon House, visited the reach of interest on the morning of May 18, 2017 to collect inflow/outflow discharge measurements. Due to damage from heavy equipment to the existing concrete liner, DWCCC installed a temporary polyvinyl chloride (PVC) lining on the lower third of the reach of interest – reducing seepage losses in this section (Figure 6). Any measurements including flow through the PVC lined reach would underestimate seepage losses. A downstream measurement location was selected just upstream of the PVC lined reach (Figure 6). A section of canal just upstream of the reach of interest had similar properties (aged, fractured concrete liner) and so was included in the measurement plan. DWCCC had been running water in the canal for at least several days prior. Pressure transducers were submerged in the canal near each measurement location to record absolute pressure for the duration of all the discharge measurements.

<sup>1</sup> The hyporheic zone is a subsurface volume of porous media beneath and alongside a stream/canal through which surface water readily exchanges.



**Figure 6 - Location of discharge measurements.** The blue line represents the reach of canal between the upstream and mid-stream discharge measurement locations – the measured reach. The measured reach is approximately 0.17 mi long.

The canal was straight and had minimal flow disruptions just upstream of the mid-stream and upstream measurement locations. A slight bend was located just upstream of the downstream measurement location, but likely had little influence on measurement accuracy. Sparse vegetation was present in the fractures of the concrete lining near all measurement sites. This was most prevalent on the right bank of the upstream measurement site (Figure 7). High turbidity did not allow visual inspection for vegetation on the submerged portion of the canal lining. A gauged diversion of approximately 8 cfs was located between the mid-stream and downstream measurement locations (Figure 6)

After a measurement location was selected, stakes with pulleys were pressed into the canal banks opposite each other (Figure 8). A rope was looped through the pulleys spanning the canal. The StreamPro was tethered to a fixed point on the rope. Excess tether rope was looped around the StreamPro control housing. This increased stability of the float by causing it to sit lower in the water. The bounding edges for the traverse were located by positioning the StreamPro as near the canal banks as possible while maintaining enough water depth to be discretized into two cells. This location was marked on the tether rope for repeatability. Data collection was then initiated. Per standard practice, a minimum of ten measurements were collected at each bank with the float stationary at the beginning and end of each traverse [Mueller and Wagner, 2009]. Using the tether rope, the StreamPro was traversed across the canal at a velocity at least

## Water Conservation Verification of Davis & Weber Counties Canal Company Canal Piping Project

3x less than the water velocity. Several traverses were collected at each location.



**Figure 7 - Upstream measurement location. Note vegetation growing in cracks of fractured concrete liner. ADCP is in boom position.**



**Figure 8 – Mid-stream measurement location data collection setup. Note highly fractured concrete liner. ADCP is mounted in boom position.**

Two discharge measurements were collected at the upstream location (Figure 7) and one each at the mid-stream (Figure 8) and downstream (Figure 9) locations. Field review of

## Water Conservation Verification of Davis & Weber Counties Canal Company Canal Piping Project

the difference between the first upstream and downstream discharge measurements, adjusted for the diverted flow, would indicate that the reach between the measurement points was gaining water. This is more likely a result of the dynamics of the canal system from varying inflows or inaccuracy of the diversion measurement. Field review of the difference between first upstream and mid-stream measurements also would indicate that the reach between the measurements was gaining water. Again, this is more likely the result of canal flow conditions changed in the time between when the measurements were collected. Therefore, an additional discharge measurement was collected at the upstream location (Figure 7).



**Figure 9 - Downstream measurement location. Black line indicates approximate location of measurement.**

### Data Processing

Data from a weather station 3 mi east of the field site indicated an increase in barometric pressure during field measurement collection (Automated Weather Observing System, Station ID: KHIF). Pressure transducer data was adjusted for this increase using the slope of the best fit line to the weather station barometric pressure data. Transducer recorded absolute pressure was parsed into barometric and water pressures by subtracting the transducer reading immediately prior to submerging the transducer in the canal. The resulting adjusted pressure was then converted to an approximate depth of water. To ease comparison between measurement locations, water depth data was converted to change in water depth since a common start time.

ADCP discharge data were processed using *WinRiver II (Teledyne RD Instruments)*. Four transects were collected at the up-stream location, and six at the mid- and downstream measurement locations (Figure 6). Inclusion of multiple measurements at the canal banks has the potential to compound errors. Defining subsections of each transect which excluded several, redundant bank measurements was also found to increase total discharge agreement between transects. A combination of transects which had good total discharge agreement were selected for inclusion in the average for the final, total discharge. Due to the possibility of traverse directional bias (i.e. travel from the left to the

## Water Conservation Verification of Davis & Weber Counties Canal Company Canal Piping Project

right bank or visa-versa), an equal number of left and right transects were included in the final discharge measurement.

Assuming the transect total discharge measurement population is normally distributed, the confidence intervals for the mean total discharge ( $\bar{X}$ ) were calculated using the  $t$  distribution, standard deviation of the transect total discharge data sets ( $S$ ), and the number of transects used in the mean total discharge calculation ( $n$ ) [Spiegel *et al.*, 2013]. The  $t$  distribution was used in place of the Normal distribution since  $n$  is less than 30. Standard deviations were calculated by *WinRiver II* and measurement summaries presented in Appendix A (page 14). The confidence intervals are then calculated by:

$$\bar{X} \pm t_c \frac{S}{\sqrt{n}} \quad (\text{Equation 1})$$

where  $t_c$  is the  $t$  distribution critical value read from a table based on the desired confidence level and the degrees of freedom ( $n - 1$ ). The confidence interval for the difference between the two total discharge means ( $\bar{X}_1$  and  $\bar{X}_2$ ):

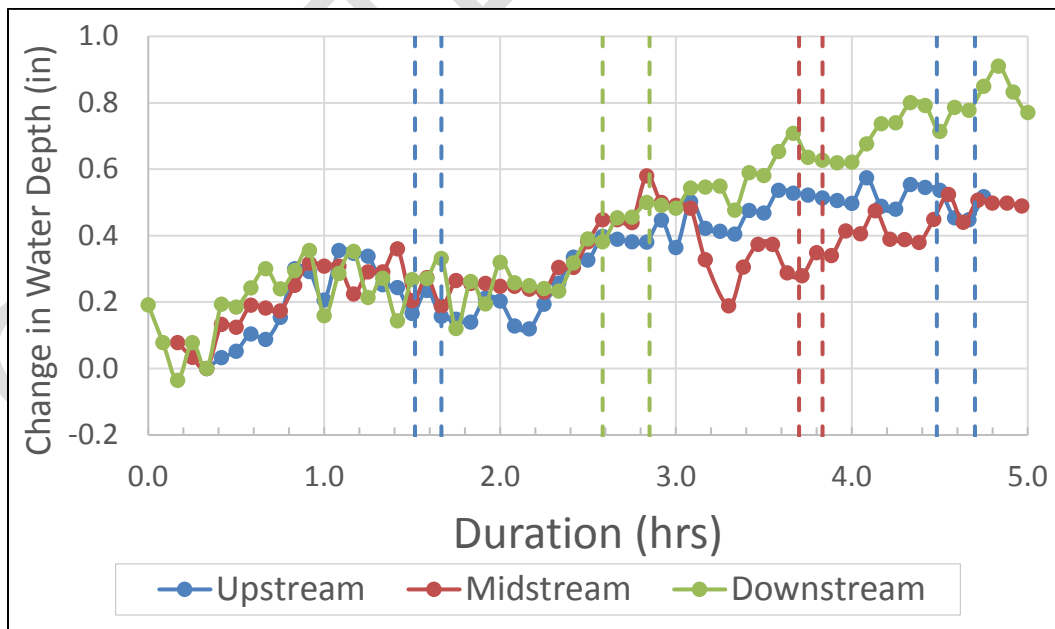
$$\bar{X}_1 - \bar{X}_2 \pm t_c \sqrt{\frac{S_1^2}{n_1} + \frac{S_2^2}{n_2}} \quad (\text{Equation 2})$$

In this case, the difference between the two total discharge means will be the measured losses.

## Results

The canal lining was highly fractured in all observed sections (Figure 7, Figure 8, and Figure 9). Vegetation was growing in most of the fractures.

Change in water depth, in inches (in), near the upstream (blue), mid-stream (red), and downstream (green) discharge measurement locations are presented in Figure 10. Dashed, vertical lines bound the periods of time during which discharge measurements were collected. The color of the dashed lines corresponds to the measurement location.



**Figure 10 - Change in water depth adjusted for increasing atmospheric pressure and zeroed at a common time. Dashed lines bound canal discharge measurements at the color corresponding location.**

## Water Conservation Verification of Davis & Weber Counties Canal Company Canal Piping Project

Total measured discharge from the three measurement sites is presented in sequential order in Table 1. Eighty-percent confidence intervals were calculated using the  $t$  distribution (Equation 1)  $\bar{X} \pm t_c \frac{S}{\sqrt{n}}$ . Summary details for each measurement can be found in Appendix A (page 14).

**Table 1 – Discharges from the three measurement locations and associated 80% confidence intervals.**

First Upstream Discharge (cfs):	55.7 ± 1.21
Downstream Discharge (cfs):	48.6 ± 0.64
Mid-Stream Discharge (cfs):	59.2 ± 0.62
Second Upstream Discharge (cfs):	60.7 ± 0.76

## Discussion

Though the submerged portion of the lining could not be seen, it is not unreasonable to assume it is in similar condition to the exposed lining. Fractures impair the linings effectiveness at reducing seepage since surface water can flow through these cracks. Fractures also provide areas for vegetation to take root, increasing transpiration water losses.

The increase in canal water depth from 2.2 hours (hrs) to 2.6 hrs indicate that the first upstream discharge measurement was collected under different flow conditions than the subsequent three measurements (Figure 10). This is supported by the 5.0 cfs increase between the first and second upstream measurements (Table 1). Therefore, the first upstream measurement is not a reasonable inflow for comparison to the mid- and down-stream measurements. The continued water depth increase at the downstream location from 2.3 hrs on, after the up- and mid-stream locations stabilize, could indicate a steady decrease in the discharge of water being diverted at the diversion site (Figure 10). Due to this uncertainty, the downstream measurement was not used.

Based on the above decisions, the second upstream and mid-stream measurements were used to estimate losses for the reach of interest. The difference of the up- and mid-stream discharge measurements indicate  $1.47 \pm 0.98$  cfs in losses over the

measured reach under these flow conditions (Equation 2)  $\bar{X}_1 - \bar{X}_2 \pm t_c \sqrt{\frac{S_1^2}{n_1} + \frac{S_2^2}{n_2}}$

(Equation . The losses were then normalized for the length of the measured reach to account for the difference in length from the reach of interest. With 80% confidence, this yields approximate annual surface water loss of  $565 \pm 378$  AFY (Table 1 and Table 2).

**Table 2 - Estimation of surface water losses from the reach of interest with 80% confidence intervals**

Second Upstream Discharge (cfs):	60.7 ± 0.76
Mid-Stream Discharge (cfs):	59.2 ± 0.62
Measured Reach Losses (cfs):	1.47 ± 0.98
Irrigation Season Duration (days):	183
Measured Reach Length (mi):	0.17
Reach of Interest Length (mi):	0.18
<b>Annual Loss (AFY):</b>	<b>565 ± 378</b>



## **Conclusions**

The measured surface water losses are assumed to be entirely from seepage and ET. By piping the reach of interest it is assumed that the seepage losses will be mitigated and ET losses eliminated. DWCCC assumes reinforced concrete pipe is 97% effective at reducing seepage. Based on review of testing requirements for pressurized, non-cylindrical reinforced concrete pipe, this effectiveness is reasonable [*American Water Works Association*, 2008]. With 80% confidence, the canal piping project will result in a surface water savings of **548 ± 367 AFY**. This is 280% ± 255% more than the estimated surface water savings of 144 AFY stated in DWCCC's grant application.

There is a high level of uncertainty in these results due to variability between transect discharge measurements (Appendix A), the relatively low losses discharge compared to the total discharge, and the number of measurements. The cause of uncertainty is that each transect does not measure the same total discharge. The greater the central tendency of the total discharge measurements the less uncertainty. This uncertainty is amplified by the low discharge of losses relative to the total discharge. Taken individually, the confidence intervals for the total discharge values are tight ( $\pm 1.3\%$  and  $\pm 1\%$  for upstream and mid-stream discharge, respectively). However, when the difference of these is calculated, the uncertainty is amplified relative to the discharge of annual losses ( $\pm 67\%$ ). Uncertainty can be reduced by collecting additional transect measurements; however, this was not deemed necessary to accomplish the project scope.

The scope of this work is to verify that the grant recipient's estimate of annual losses is reasonable. The low-end of the 80% confidence interval results in a conservation of surface water which is 26% greater than that estimated by DWCCC. It is recommended that DWCCC's grant application surface water conservation estimate be considered reasonable.

## Bibliography

American Water Works Association (2008), *M9 Concrete Pressure Pipe*, 3rd ed., American Water Works Association.

Jensen, M. E., L. R. Swarner, and J. T. Phelan (1967), Improving Irrigation Efficiencies, in *Irrigation of Agricultural Lands*, pp. 1120–1142, American Society of Agronomy.

Mueller, D. S., and C. R. Wagner (2009), Measuring discharge with acoustic Doppler current profilers from a moving boat, *U. S. Geol. Surv. Tech. Methods*, (December), 72, doi:10.3133/tm3A22.

Spiegel, M. R., J. Schiller, and R. A. Srinivasan (2013), *Schaum's Outline of Probability and Statistics*, 4th ed., The McGraw-Hill Companies, Inc.

Teledyne Marine (2004), StreamPro ADCP Operation Manual, Available from: <http://www.teledynemarine.com/streampro?BrandID=16> (Accessed 4 April 2017)

Teledyne RD Instruments (2008), *WinRiver II User's Guide*.

FOR INTERNAL USE



---

Paul Burnett  
Trout Unlimited  
5279 South 150 E  
Ogden, UT 84405  
(801) 436-4062

March 8, 2019

Rick Smith, PE General Manager  
Davis and Weber Counties Canal Company  
138 W 1300 N  
Clearfield, UT 84015

Dear Mr. Smith:

Over the past several years, Trout Unlimited has had the opportunity and privilege to be involved in a positive multi-stakeholder effort within the Weber River Watershed, known as the Weber River Partnership. We value the involvement and perspective that the Davis and Weber Counties Canal Company has brought to this partnership, which represents a broad and diverse array of interests within the basin. The Weber River Partnership has made great progress in the Weber River by providing a platform for communication, coordination and collaboration among the diverse stakeholders and we believe this diversity has brought considerable value to developing a cohesive vision that includes water security, agricultural interests, community development and natural resources values.

Trout Unlimited has been working on the ground with a number of partners throughout the Weber River Basin, including the Utah Division of Wildlife Resources, agricultural producers and water users to protect and restore populations of Bonneville cutthroat trout and bluehead sucker through habitat restoration, fish passage and water efficiency projects. The bluehead sucker and Bonneville cutthroat trout populations have declined and are in jeopardy and petitions for listing under the Endangered Species Act are possible if pro-active measures are not taken. Understandably, all partners in the watershed benefit by preventing the listing of imperiled species, but beyond that, we believe that many watershed partners also greatly value the fact that these species persist in the Weber River, a sign of the great resilience of these native species and a reflection of the rich economic vitality they bring to our communities. Nevertheless, these species need our help and a cohesive strategy through the Weber River Partnership broadens the scope of our actions on the ground to provide broad benefits to all stakeholders in the Basin.

Trout Unlimited is encouraged by and supportive of your proposed project to improve the water conveyance within your system by enclosing the canal near SR-193 under the WaterSMART water and energy efficiency program. We believe this project contributes to the

overall goals of the species conservation by improving conveyance of diverted water providing more opportunity to improve the resiliency of native fish populations.

We support your proposal and are committed to working with the Davis and Weber Counties Canal Company on this efficiency project if our assistance is needed. We look forward to the continued collective progress, working in partnership with your organization on the broader goals of improving communication, coordination and collaboration within the Weber River Basin.

With Kind Regards.

A handwritten signature in black ink, appearing to read "Paul Burnett", with a long horizontal flourish extending to the right.

Paul Burnett  
Utah Water and Habitat Program Director  
Trout Unlimited  
5279 South 150 East  
Ogden, UT 84405



GARY R. HERBERT  
Governor

SPENCER J. COX  
Lieutenant Governor

# State of Utah

## DEPARTMENT OF NATURAL RESOURCES

MICHAEL R. STYLER  
Executive Director

### Division of Wildlife Resources

MICHAEL D. FOWLKS  
Division Director

March 8, 2019

Richard D. Smith, P.E.  
General Manager  
Davis & Weber Counties Canal Company  
138 West 1300 North  
Sunset, Utah 84025

Subject: U.S. Bureau of Reclamation WaterSMART Water Efficiency Grant

Dear Mr. Smith:

As the Aquatics Habitat Restoration Biologist in Northern Utah for the Utah Division of Wildlife Resources (UDWR), I am pleased to write in support of the grant application you are submitting to the U.S. Bureau of Reclamation Water and Energy Efficiency Grants Program. I applaud your efforts to increase the efficiency of your system to conserve valuable water and energy. All water savings in the Weber River are valuable to ensure that we have adequate water for future generations.

The Bonneville Cutthroat Trout and Bluehead Sucker are native fish species found in portions of the Weber River. Both species are covered by conservation agreements the State of Utah has entered into with the U.S. Fish and Wildlife Service and other parties. The population status of these two sensitive species warrants additional conservation effort to diminish the likelihood of future listings under the Endangered Species Act. UDWR's approach to aquatic species conservation and management in the Weber River, in part, focuses on reconnecting and maintaining connectivity of priority habitats by removing unnecessary barriers to fish migration, or by modifying existing barriers to allow upstream movement of these species, particularly for Bonneville Cutthroat Trout and Bluehead Sucker. Naturally of course, stable and connecting flows between those habitats are a fundamental requirement for those conservation actions to be successful. Within that context, most any project that enhances the continuity and maintenance of flows within the Weber River is a step in the right direction, as we work cooperatively to protect and conserve these native species.

The Davis & Weber Counties Canal Company has been a great partner and contributed to a graduate student project that is currently studying Bluehead Sucker in the Weber River. The outcome from this study will be to determine important spawning locations (including spawning habitat requirements) and the type of low velocity/backwater habitats needed for juvenile Bluehead Sucker survival and recruitment. The results from this study will guide future management of Bluehead Sucker in the Weber River into the future and will help guide future habitat restoration projects.



The population of Bonneville Cutthroat Trout in the lower Weber River is quite unique in that they travel significant distances in the main stem Weber River and ultimately up into tributary streams to spawn. This life history attribute has been lost from almost all Bonneville Cutthroat Trout populations, but still persists in the Weber River! We are very excited regarding the objective in this grant application that specifically addresses a specific length of canal needing repair. Water saved by piping this reach of canal will benefit both Bonneville Cutthroat Trout and Bluehead Sucker in the lower stretches of the Weber River. Both the UDWR and TU are fully committed to partner with the Davis and Weber Counties Canal Co. to ensure that the work on this section of canal is completed, thus allowing more water for fish use in the lower Weber River. This project will help ensure that Bonneville cutthroat trout and Bluehead Sucker do not become a federally listed species under the Endangered Species Act in the future.

Sincerely

A handwritten signature in blue ink, appearing to read 'Clint Brunson', with a long horizontal flourish extending to the right.

Clint Brunson  
Aquatics Habitat Restoration Biologist  
Utah Division of Wildlife Resources



# WEBER BASIN WATER CONSERVANCY DISTRICT

2837 East Highway 193 • Layton, Utah 84040 • Phone (801) 771-1677 • (SLC) 359-4494 • Fax (801) 544-0103

March 1, 2019

Davis and Weber Counties Canal Company (D&W)  
138 W. 1300 N.  
Sunset, UT 84015

Tage I. Flint  
General Manager/CEO

RE: Letter of Support for Water and Energy Efficiency Project

Board of Trustees:

Paul C. Summers  
President  
Davis County

Kym O. Buttschardt  
Weber County

Jay V. Christensen  
Weber County

Kerry W. Gibson  
Weber County

Marlin K. Jensen  
Weber County

P. Bret Millburn  
Davis County

John Petroff Jr.  
Davis County

Dave Ure  
Summit County

Dee Alan Waldron  
Morgan County

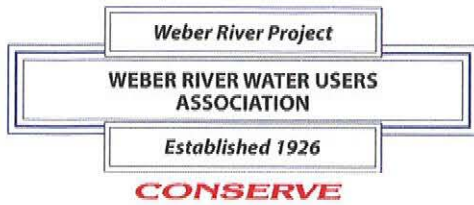
Dear D&W,

The Weber Basin Water Conservancy District (WBWCD) is pleased to write in support of your grant application being submitted to the Bureau of Reclamation for the Water and Energy Efficiency Grants Program. We appreciate D&W's efforts to enclose more of your canal to conserve irrigation water from evaporation and seepage losses.

WBWCD recognizes the importance of water conservation in our often water-short basin. The water saved through this improvement project will be of benefit to regional water users and the environment. WBWCD is a large shareholder in D&W and every water savings effort secures water within the basin. We support this grant application and appreciate the advancements it will make in conserving valuable water resources.

Sincerely,

Darren Hess, PE  
Assistant General Manager/COO



# *Weber River Water Users Association*

138 West 1300 North • Sunset, Utah 84015-2918 • p (801) 774-6373 • f (801) 774-5424 • WRWUA.org

March 4, 2019

Davis and Weber Counties Canal Company (D&W)  
138 W. 1300 N.  
Sunset, UT 84015

Re: Letter of Support for Water and Energy Efficiency Project

Dear D&W,

The Weber River Water Users Association (WRWUA) is pleased to write in support of your grant application being submitted to the Bureau of Reclamation for the Water and Energy Efficiency Grants Program. We applaud your efforts to enclose more of your canal to conserve irrigation water from evaporation and seepage losses.

WRWUA recognizes the importance of water preservation and conservation in our often water-short basin. The water saved through this improvement project will be of benefit to regional water users and the environment. We applaud your efforts to conserve one of our most precious natural resources.

D&W is a large shareholder of WRWUA, and every water savings secures water within the basin. We support this grant application and appreciate the advancements it will make in conserving valuable irrigation water resources.

Sincerely,

Weber River Water Users Association

Theo G. Cox  
President





Davis & Weber Counties Canal Company

Attachment G

Priority Projects

10/9/2017

High Priority Projects

Priority	Segment #	Stationing		Length (ft)	Current Condition	Proposed Improvement	Estimated Replacement Year	Estimated Replacement Cost	Location and Description
		Start	End						
0	35	631+75	642+00	1,025	Open Liner	Box Culvert	2018	\$ 804,713	Funded by WaterSmart by 650 North
1	50	873+75	891+00	500	2017 66" Pipe	1-66" RCP	2019	\$ 231,045	Layton, Connection to Church St Reservoir
2	46	756+75	788+25	3,150	No Liner	2-66" RCP	2024	\$ 2,260,343	Clearfield, South/East of 1500 East
3	47	788+25	800+00	1,175	No Liner	1-66" RCP	2025	\$ 639,970	Layton, South/East of University Parkway
4	21a	425+00	425+00	-	72" Rivited Steel Pipe	HDPE	2025	\$ 280,784	Penstock Pipe
5	43	725+50	742+50	1,700	Open Liner	2-66" RCP	2028	\$ 1,307,776	Clearfield, Gate 23E to SR 193
6	33	619+75	630+25	1,050	Open Liner	Box Culvert	2030	\$ 884,603	Sunset, Behind American Stone
7	30	604+75	611+25	650	Open Liner	Box Culvert	2031	\$ 614,636	Sunset, South of 1300 North (Sierra RV)
8	48	800+00	852+40	5,240	2000 54" CMP/RCP	1-66" RCP	2034	\$ 2,511,840	Layton, Replace Existing 54" CMP
9	45	743+50	756+75	1,325	1999 84" Al. Steel	2-66" RCP	2035	\$ 962,255	Clearfield, Replace 84" at Tai Pan Trading
10	25	530+40	585+00	5,460	Open Liner	Box Culvert	2040	\$ 4,683,967	Roy, Railroad Crossing to I-15
11	42	714+25	725+50	1,125	Open Liner	2-66" RCP	2040	\$ 806,788	Clearfield, I-15 to Gate 23E
12	27	590+50	593+75	325	Open Liner	Box Culvert	2041	\$ 331,826	Sunset, Parallel SR126 by Sunset Pond
13	29	601+25	604+75	350	1993 Liner	Box Culvert	2041	\$ 323,564	Sunset, In front of Sunset Pond
14	28	593+75	601+25	750	2011 Open Liner	Box Culvert	2041	\$ 647,751	Sunset, By Sunset Pond
15	52	90130	90375	245	Open Ditch	1-48" RCP	2041	\$ 109,912	End of canal after Church Street Pond
16	23	471+00	497+00	2,600	1988 Open Liner	Box Culvert	2042	\$ 2,273,573	Roy, Breach Box Culvert to 5600 South Box
Total				26,670			Total	\$ 19,675,346	

Watch List

Priority	Segment #	Stationing		Length (ft)	Current Condition	Proposed Improvement	Estimated Replacement Year	Estimated Replacement Cost	Location and Description
		Start	End						
17	37	643+00	652+00	900	2011 Open Liner	Box Culvert	2043	\$ 763,880	Clearfield, South of 650 N
18	38	652+00	666+75	1,475	1988 Open Liner	Box Culvert	2044	\$ 1,460,092	Clearfield, South of 650 N
19	31	611+25	615+00	375	3-60" Al Steel Pipes	Box Culvert	2044	\$ 339,909	Sunset, Replace 60" CMP at Sierra RV
20	21	392+00	458+00	6,600	2000 102" Dia Pipe	Box Culvert	2047	\$ 5,990,469	Riverdale, 102" AL Pipe
21	14	282+25	293+80	1,155	1993 Open Liner	Box Culvert	2048	\$ 1,204,035	South Weber, Open Liner
22	20	374+75	392+00	1,725	1992 Open Liner	Box Culvert	2049	\$ 1,863,160	Riverdale, Open Liner
23	8	140+84	144+68	384	1998 Open Liner	Open Liner	2049	\$ 226,127	South Weber, Open Liner
24	18	335+00	352+40	1,740	1995 Open Liner	Open Liner	2050	\$ 1,033,409	South Weber, Open Liner
25	26	585+00	590+50	550	Box Culvert	UDOT Box Culvert	2050	\$ 185,414	Sunset 1600 North SR 126
26	34	630+25	631+75	150	1945 Box Culvert	UDOT Box Culvert	2050	\$ 133,414	Sunset 800 North SR 126
27	44	742+50	743+50	100	Box Culvert	UDOT Box Culvert	2050	\$ 120,904	Clearfield, SR 193
Total				15,154			Total	\$ 13,320,812	
Total High Priorities and Watch List				41,824			Total High Priorities and Watch List	\$ 32,996,158	