



Turf Removal Incentive Program for Residential and Non-Residential Customers

**WaterSMART Small-Scale Water Efficiency
Projects for Fiscal Year 2024/2025**

FUNDING OPPORTUNITY ANNOUNCEMENT:

R24AS00059

DATE OF SUBMISSION:

7-3-2024

Applicant:

Global Water Resources – Santa Cruz Water Company, Inc.

21410 N 19th Ave. Phoenix, AZ 85027

Submitted By:

Kallika Naylor

21410 N 19th Ave. Phoenix, AZ 85027

kallika.naylor@gwresources.com

(520) 349-7011

Table of Contents

Mandatory Federal Forms	3
Executive Summary	3
Project Location	3
Technical Project Description.....	4
Evaluation Criteria	6
E.1.1. Evaluation Criterion A—Project Benefits (35 points)	6
E.1.2. Evaluation Criterion B—Planning Efforts Supporting the Project (25 points)	10
E.1.3. Evaluation Criterion C—Implementation and Results (20 points)	12
E.1.4. Evaluation Criterion D—Nexus to Reclamation (5 Points)	15
E.1.5. Evaluation Criterion E—Presidential and Department of the Interior Priorities (15 points)	16

Executive Summary

Global Water – Santa Cruz Water Company, Inc. (GW – SCWC), located in the City of Maricopa in Pinal County, AZ, 33 miles Southwest of Phoenix, Arizona, is requesting funding to support outdoor water conservation efforts through a turf removal and replacement rebate program for residential and non-residential customers. All turf converted through this program would be required to be replaced with water efficient landscaping. Global Water Resources (GWR), through a cost sharing agreement with Reclamation, will offer an incentive amount of \$1.00 per square foot of turf removed and replaced resulting in a water savings of approximately 35 gallons per square foot per year¹ or a total potential savings of 3.3 million gallons per year. A cost share with Reclamation would allow GWR to expand the water conservation efficiency programs offered and incentivize customer participation in these programs, resulting in significant water savings, environmental benefits, and increased public awareness of the importance of water efficiency programs in the proposed area. This project contributes to GWR's goal of Total Water Management by incentivizing behaviors through data driven programs that reduce demand of scarce non-renewable resources and contributing environmental and economic benefits to the local community.

GW-SCWC is a Category A applicant. Application submitted on July 3, 2024.

Length of Time and Estimated Completion Date

The length of time to complete the proposed Program is two years, with an expected start date of March 2025 (anticipated award date) and completion date of March 2027.

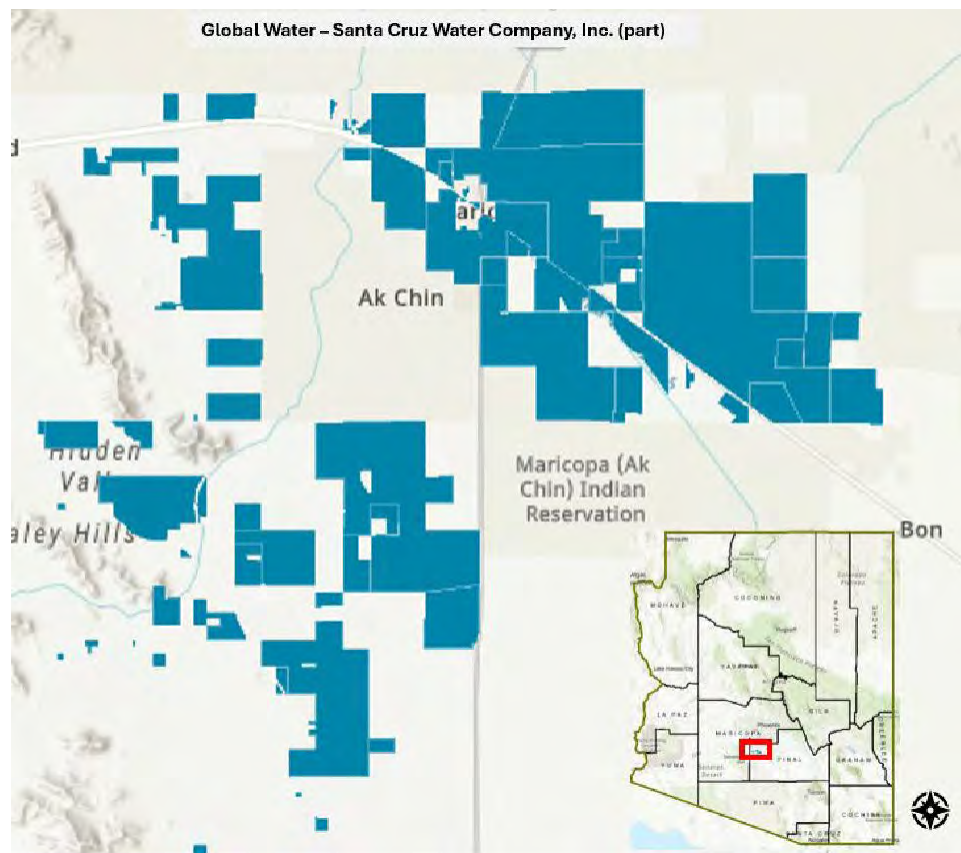
Whether Or Not the Project Is Located on a Federal Facility

The Turf Removal Incentive Program is not located on a federal facility.

Project Location

Global Water – Santa Cruz Water Company, Inc. (GW - SCWC) is located in Pinal County, AZ and serves the City of Maricopa. Turf conversions associated with the program will take place at various participant's properties within the boundaries of GW-SCWC's service area. See Figure 1 below.

Figure 1: Global Water – Santa Cruz Water Company Main & SW Service Area



Technical Project Description

GW-SCWC delivers water to the City of Maricopa, a community with a rich agricultural history, which has seen a significantly rapid population increase since its inception in 2003 and is GWR's largest service area. Throughout GW-SCWC is a blend of outdoor landscaping with desert landscaping and turf grasses. An estimate of this service area shows about forty percent of all landscaping is turf grass, with a large amount of daily water deliveries belonging to HOA communities. Forty percent of irrigation deliveries in GWR-SCWC are groundwater with the remaining consisting of recycled water.

Continuing drought conditions and the associated regulatory cutbacks on groundwater allocations particularly for larger water users in this region are forcing GW-SCWC customers to investigate alternatives to water thirsty landscapes such as turf grass. The proposed funding for a Turf Removal Incentive Program would enable GW-SCWC to provide incentives for long lasting solutions to existing water use efficiency concerns and better assist residential and non-residential customers with their water conservation goals.

If funding is received, the Turf Removal Incentive Program as a new component of the existing water conservation program would offer financial assistance in the form of a fixed incentive amount of \$1.00 per square foot of water intensive turf landscape converted to water efficient landscaping through the removal of turf and replacement with low water use, drought tolerant and Arizona native plants from a list of low water use and desert plants approved by the Arizona Department of Water Resources.² Residential and non-residential landscapes would be eligible for a combined total of 97,200 square feet of turf conversion incentives, with the maximum conversion per customer for non-residential being 20,000 square feet and 2,000 square feet for residential landscapes.

The differences in conversion limits per customer type are based on irrigation water use amount and landscape area, considering that conversion of larger areas of turf are often more cost efficient. The estimated annual water savings for this amount of turf removed is 3.3 million gallons (10 acre-feet) after accounting for the estimated annual water use needs of the converted landscape. This water savings can potentially increase over time with the establishment of new landscapes and proper education on irrigation practices.

Education on low water use landscaping design, installation and maintenance are currently provided as a part of GWR's adult water conservation education program through in-person workshops, presentations and written resources. This topic has been successfully attended throughout this program's life, and many large water users surveyed by GWR in this service area have also expressed interest in pursuing turf conversion in favor of low water use landscaping. Some customers with large landscapes have already converted specific areas of turf to low water use landscaping, while many others have faced difficulties in accumulating the funds needed to complete a significant turf conversion project. This grant would allow GW-SCWC to incentivize these conversions and increase accessibility for all customers.

GW-SCWC will implement a robust public outreach program for the Turf Removal Incentive Program to encourage program participation. Potential program participants will be targeted through an online WaterSmart platform, social media, conservation e-newsletters, dedicated webpage on water conservation, articles in the local newspaper, printed brochures, and advertisements through related workshops and presentations. The program will also be promoted through community partnerships such as the City of Maricopa.

The program participation process will consist of an initial application submission by the property owner, which will include information such as the conversion area measurement, site plan, existing irrigation equipment, customer account information, water source and site photographs that indicate the conversion area meeting all program requirements. Program performance will be evaluated based on water use before and after the conversion. Customers will be provided with post-conversion assistance to maintain and irrigate their new landscape if desired to promote maximum potential water savings.

Evaluation Criteria

E.1.1. Evaluation Criterion A. Project Benefits (35 points)

Benefits to the Category A Applicant's Water Delivery System: Describe the expected benefits to the Category A applicant's water delivery system. Address the following:

- **Clearly explain the anticipated water management benefits to the Category A applicant's water supply delivery system and water customers.**

Consider:

1. Will the project result in more efficient management of the water supply?
2. Where any conserved water as a result of the project will go and how it will be used?

GWR is committed to the efficient management of local water resources. Water savings from this program will benefit the aquifer in an important way by reducing groundwater withdrawal demands. The Eloy and Maricopa-Stanfield (EMS) Basin Study funded in part by the US Bureau of Reclamation with multiple cost-share partners including GWR, has the objective of addressing water supply uncertainties, assessing current and future water demands and supplies and developing strategies to help ensure future water supply sustainability. The "Adaptation and Mitigation Strategies" chapter of the study specifically identifies "Municipal Conservation and Reuse" as an approach to address water supply and demand imbalances, groundwater depletion and climate change.³

GW-SCWC utilizes one hundred percent groundwater pumped from local wells. More than forty eight percent of the potable use returns as effluent which is recycled and reused throughout the community. A portion of the daily water consumption in this service area is used for irrigation purposes, with a majority, but not all of irrigation uses being served with recycled water. Through this program, GW-SCWC aims to target customers utilizing the remaining portions of potable water for irrigation uses. Implementing a Turf Removal Incentive Program would increase water supply reliability in this service area by reducing irrigation demands on potable water. The conversion of turf landscapes utilizing recycled water would also allow the resulting saved water to be stored underground, offsetting groundwater withdrawal amounts. Overall, the projected water savings of the program include 3.3 million gallons conserved per year for the life of the converted landscapes, which would reduce GWR's groundwater pumping demands by 10-acre feet annually from the aquifer. Reductions in treated water supply demand will also reduce demand on GW-SCWC's distribution system including water treatment and pumping facilities.

The program would also be financially beneficial for both residential and non-residential customers through the reduction in cost of their monthly water bill due to reduced consumption of water for irrigation purposes after the conversion of landscape with the provided rebate incentive. This program would increase accessibility for turf conversions

within this service area for customers who otherwise may not have the financial capacity to pay the full cost on their own. This program could be particularly beneficial for large water users in this area such as HOAs who may not be able to leverage the costs of converting large areas of turf without a rebate program to meet their reduced State of Arizona groundwater allotments beginning in 2025.

- **Explain the significance of the anticipated water management benefits for the Category A applicant's water delivery system and customers. Consider:**

- *Are customers not currently getting their full water right at certain times of year?*

Customers in the GW-SCWC receive their full water rights at all times of the year, as this service area has a Designation of Assured Water Supply with the Arizona Department of Water Resources. However, the Arizona Department of Water Resources has recently adopted a new ten-year water management plan effective January 1, 2025, which will significantly reduce the annual allocations of groundwater that may be used by large turf users.

- *Does this project have the potential to prevent lawsuits or water calls?*

Due to the scope of the Turf Removal Incentive Program, GWR does not anticipate any impacts associated with lawsuits or water calls.

- *What are the consequences of not making the improvement?*

Conservation is at the core of GWR's Total Water Management Principles, and the water conservation program has continually evolved to offer more programs and resources. By not offering this program, GWR would not be providing the best solutions to the water conservation obstacles voiced by customers and evolving the program to their needs as well as its own. Without the program, many large water users already at risk of exceeding state mandated water restrictions will not have an important resource to reduce their use in a significant way. In addition, already threatened groundwater supplies would continue to be utilized for excessive and unnecessary irrigation practices by those who cannot leverage the finances to convert their water intensive landscapes.

- *Are customer water restrictions currently required?*

No customer water restrictions are currently required by GWR or the City of Maricopa, however customers using larger amounts of

groundwater are restricted to specific allotments by the Arizona Department of Water Resources.

- *Other significant concerns that support the need for the project.*

GWR does not currently offer any water conservation incentive programs, therefore this funding would enable the conservation program to develop significantly in this area. Many neighboring municipalities offer a range of incentive programs that GWR's customers do not currently have access to. This program would increase the capacity of turf removal programs in Pinal County by expanding to this previously unreached population.

Broader Benefits: Describe the broader benefits that are expected to occur as a result of the project. Consider: Will the project improve broader water supply reliability at sub-basin or basin scale?

- **Will the proposed project increase collaboration and information sharing among water managers in the region? Please explain.**

The proposed program will increase collaboration and information sharing among water managers in the region through the sharing of program results with Reclamation as well as with regional partnerships in Pinal County and neighboring water delivery companies. Currently, only a few private water companies operate and deliver water to residents in Pinal County, including GWR. If granted funding, GWR will be the first of these providers to offer a turf removal incentive program to its customers in this region. The program encourages water managers to work together to promote and implement water conservation measures. They may also share best practices and success stories from their respective programs to help each other improve and expand their conservation efforts.

GW-SCWC has also worked hard to establish positive relationships with its customers, particularly the Homeowners Associations in this service area. This program as a component of the conservation program will allow GWR-SCWC to further strengthen these relationships and encourage collaboration on conserving water resources through communication about water efficient landscaping and budget friendly landscape upgrades. This program will operate beneficially with an existing program for large water users in this area in which GWR-SCWC offers professional third-party large landscape irrigation audits at no cost to Homeowner's Associations.

This process involves an initial landscape water use analysis, site assessment, and

discussion with all stakeholders to determine potential methods through which higher water savings can be achieved. GWR also works with the Smartscape extension in Pinal County to educate HOA property managers and irrigation professionals on water efficient landscaping practices. Overall, this program would allow GWR to further aid customers in achieving their water conservation goals by offering financial incentives to complete these projects.

This program will fulfill an important tenet of GWR's Total Water Management (TWM) principles, which includes collaborating and communicating with all stakeholders throughout the areas that we serve to more effectively manage our collective water resources.

- **Is the project in an area that is experiencing, or recently experienced, drought or water scarcity? Will the project help address drought conditions at the sub-basin or basin scale? Please explain.**

GWR-SCWC is in an area that is currently experiencing drought conditions, and historical over-pumping of the aquifer, which has affected water supply levels. In 2019, the Arizona Department of Water Resources (ADWR) closed the groundwater basin to future residential development due to severe declines in groundwater levels. Although GWR-SCWC has a 100-Year Designation of Assured Water Supply, there remain threats to basin resources from other sources such as continuing drought conditions due to climate change, and shortages in surface water from the Colorado River which in turn affect groundwater availability.

In an effort to collect and analyze available data and develop potential mitigation strategies to the current aquifer conditions in the basin, GWR-SCWC, with many other partners, have been working with the US Bureau of Reclamation on the Eloy & Maricopa-Stanfield (EMS) Basin Study. This study was funded through a grant from Reclamation with matching funds provided by the study partners. This Study specifically identifies "Municipal Conservation and Reuse" as an approach to address water supply and demand imbalances, groundwater depletion and climate change.

This program will increase availability of groundwater supply in this area through a reduction in annual pumped groundwater, thereby promoting less strain on basin resources over time due to the permanent water savings of converting turf grass landscape to water efficient desert landscaping. Offering an incentive program for turf conversion will help meet this objective and also encourage an overall increase in awareness about water conservation methods and practices available, further increasing water conservation savings in this area.

- **Will the project benefit species (e.g., federally threatened or endangered, a federally recognized candidate species, a state listed species, or a species of particular recreational, or economic importance)? Please**

explain.

GWR is not aware of any specific species that this project will benefit.

- **Will the proposed project positively impact/benefit various sectors and economies within the applicable geographic area (e.g., impacts to agriculture, environment, recreation, and tourism)? Please explain.**

The City of Maricopa is home to over 60,000 residents to which GW-SCWC delivers water daily. GW-SCWC is reliant on groundwater as a source for water deliveries in this area. This program will increase groundwater availability by incentivizing the removal of water intensive landscaping, further increasing water supply availability for this service area which is an important component of GWR's mission to effectively manage and conserve water resources for generations to come in all service areas. As this region continues to grow at a rapid pace, it will become more important than ever before to conserve the groundwater supply and increase utilization of recycled water for landscape irrigation. Because the Pinal County region has a large agricultural water use need, there will be benefits to the agriculture sector as well with which GWR- SCWC shares an aquifer.

- **Will the project complement work being done in coordination with NRCS in the area (e.g., the area with a direct connection to the districts water supply)? Please explain.**

NRCS is currently working with state funding and the irrigation district in Pinal County on water conservation programs in the area. These programs are designed for agricultural users and include water efficient sprinkler pivots and drip irrigation systems. The proposed program incentivizes water conservation and contributes to drought resiliency, both of which are part of NRCS's WaterSMART Initiative. The Turf Removal Incentive Program in conjunction with the NRCS program will help conserve larger amounts of groundwater supply in the region.

E.1.2. Evaluation Criterion B. Planning Efforts Supporting the Project (25 points)

Plan Description and Objectives: Is your project supported by a specific planning document or effort? If so, describe the existing plan. When was the plan developed? What is the purpose and objective of the plan?

This program is supported by GWR's Total Water Management (TWM) Plan (<https://www.gwresources.com/total-water-management>) which outlines GWR's approach to the comprehensive management of water resources through a series of principles and practices that decrease demand on non-renewable resources and costly renewable water supplies in a manner that benefits local communities environmentally and economically. This program supports key principles of TWM including instituting programs that incentivize reduced demand of water resources and establishing partnerships with communities and all stakeholders to better support the goals of TWM.

This program will directly incentivize the customers in this service area to reduce their demand on water used for irrigation while simultaneously creating stronger relationships with customers in this community through increased communication and the exchange of information on local needs.

Plan Development: Who developed the planning effort? What is the geographic scope of the plan? If the planning effort was not developed by the Category A applicant, describe the Category A applicant's involvement in developing the planning effort.

The TWM Plan was initially created in 2003 by the executive team at GWR and was updated in 2020 to be more inclusive and encompass the various elements involved in TWM. The plan applies to all GWR's service areas located primarily in growth corridors between western Phoenix and Tucson metro areas, in particular within the City of Maricopa.

Support for the Project: Describe to what extent the proposed project is supported by the identified plan. Consider:

- **Is the project identified specifically by name and location in the planning effort?**

A turf removal incentive program is not specifically mentioned in the TWM Plan by name or location.

- **Is this type of project identified in the planning effort?**

A Turf Removal Incentive Program is applicable to this Plan, as it falls within the outlined principles of TWM including establishing incentivized programs to reduce demand of non-renewable resources and establishing community partnerships.

- **Explain whether the proposed project implements a goal, objective, or addresses a need or problem identified in the existing planning effort?** The program contributes to TWM Plan objectives in the following ways: *Minimizing potable water use where possible:*

This program would incentivize the reduction of all types of water used for irrigation purposes, including recycled and potable water. Many homeowners' associations in this service area continue to utilize large quantities of potable groundwater for irrigation of large areas of turfgrass. This program would encourage the removal of turfgrass, decreasing overall groundwater and recycled water use throughout the area.

Instituting programs that incentivize behaviors that result in reduced demand of all water resource types:

This program is directly applicable to this objective as a financial incentive would be offered to reduce demand on all water types, more importantly groundwater. A reduction in demand would result from a reduction in irrigation water use levels as well as comprehensive customer education on water efficient landscapes.

Lead educational outreach to ensure all stakeholders including customers are knowledgeable on TWM principles:

One of GW-SCWC's goals is to be a leader in water conservation outreach and education. This program will assist GW-SCWC in providing education on the topic of water efficient landscapes, and water conservation.

Establish partnerships with communities and other stakeholders to gain support of the principles of TWM:

By offering this program, GW-SCWC will be able to expand and increase its partnerships with and outreach to customers and community members and its message of water conservation and reuse and how those principles are embodied in our philosophy of TWM.

- **Explain how the proposed project has been determined as a priority in the existing planning effort as opposed to other potential projects/measures.**

This program has been identified as a priority in water conservation planning at GWR due to the fact that it meets several key principles of TWM and will be an effective method to reduce outdoor water use particularly for larger landscapes greater than 10 acres, which are facing upcoming tightening water use restrictions by the Arizona Department of Water Resources in 2025.

E.1.3. Evaluation Criterion C. Implementation and Results (20 points)

- **Describe the implementation plan for the proposed project. Please include an estimated project schedule that shows the stages and duration of the proposed work, including major tasks, milestones, and dates.**

The implementation plan for the program will include the following phases:

Phase 1: Program Design, Development & Marketing:

The Program Manager will complete all initial grant administration processes once award funding has been announced, including coordinating environmental and cultural resource compliance as needed, refining the eligibility checklist for participants and creating online application forms and a landing page on the website. This page will list participation criteria and have links to the online application and additional materials. The project will be promoted through the creation of in-house promotional materials to generate interest for program participation that will be distributed and available in person as well as through local social media, bill inserts, GWR's WaterSmart platform and direct emails to high landscape irrigation users. GWR will use its strong stakeholder relationships to promote the program and provide presentations at community or HOA events to boost program participation. All materials will acknowledge funding from Reclamation. The application period will be open for approximately 16-20 months, or until all funding has been awarded.

Phase 2: Application Review, Selection & Assessments:

During the application period, the Program Manager will review and select applicants on a rolling basis and conduct pre and post conversion site inspections. Pre-inspections will verify conversion eligibility requirements including the

existence of living turf and eligible square footage through measurements. Post-inspections will verify the total converted area through measurements and confirm installation of low water use landscaping with eligible plants. GWR staff will verify information with the participant including contact information and proposed conversion square footage. Photographs will be taken during both pre and post inspections to document landscape conditions. Irrigation system installation and condition will also be noted during the pre, and post inspections and recommendations given if needed.

Turf conversion criteria include:

- Grass must be growing at a minimum 50% density and have a functioning irrigation system.
- Artificial turf will not qualify as converted landscape.
- Applicants must ensure that the new landscape complies with all applicable laws, codes, policies, covenants and restrictions.
- Plants installed must be selected from the ADWR approved Low Water Use Plant List.
- Specified minimum square footage must be converted, and rebates cannot be applied for additional square footage that exceeds the specified maximum amount.
- Conversion must be within the GWR-SCWC service area.
- Ongoing turf conversion as well as new construction does not apply.
- Applicants should not begin conversion until receiving a Notice to Proceed from GWR's conservation staff.

Phase 3: Grant Management and Reporting:

Over the program's 24-month span, GWR proposes to facilitate the conversion of about 97,200 square feet of residential and non-residential turf at the incentive rate of \$1.00 per square foot for eligible conversions. GWR will submit program performance reports and all other required documentation throughout the duration of the program as requested by Reclamation. After the program period has concluded, GWR will prepare a final report to be sent to Reclamation and total water savings achieved will be evaluated. The Program Manager will be the point of contact for all program-related communication.

Table 1: Turf Removal Incentive Program Project Schedule

Phase	Start Date	End Date
Phase 1: Program Design, Development & Marketing	3/31/25	1/31/27
<ul style="list-style-type: none"> Grant admin processes Environmental & Cultural Resource Compliance Refine participant eligibility checklist Create online application forms Create online project landing page Promote the project, application period opens (16-20 months) Target relevant audiences with program information through marketing & outreach 		
Phase 2: Application Review, Selection & Assessments	3/31/25	1/31/27
<ul style="list-style-type: none"> Review and select applicants on a rolling basis Conduct pre and post inspections Meet with selected applicants to review project details Coordinate with the Accounting Department to process rebates 		
Phase 3: Grant Management and Reporting	3/31/25	3/31/27
<ul style="list-style-type: none"> Prepare program performance reports Prepare final report after program close 		

- **Proposals with a budget and budget narrative that provide a reasonable explanation of project costs will be prioritized under this criterion.**

If awarded, GW-SCWC will use its own budget to cover the cost of incentives paid to customers. GWR also understands the administrative commitment associated with implementing the program, including employee wages and marketing supplies, and will cover those costs through an allocated budget. More information on a detailed budget and budget narrative are included in the Budget Narrative portion of this application.

GW-SCWC requests \$50,000 from the Bureau of Reclamation. The total cost of the Turf Removal Incentive Program is \$100,000. If all funding is granted, \$97,225 will be allocated for program incentives and the remaining \$2,775 will cover program administration costs including labor and marketing supplies. No significant costs for Environmental Compliance & Natural Resources are expected. GWR will fund all non-Reclamation Program costs at an amount of \$50,000. GWR has allocated funds for the program, and this budgeted allocation will fund GWR's cost share for the Turf Removal Incentive Program. The awarded funding is anticipated to aid GW-SCWC in establishing a turf rebate program. This new program made possible with the assistance of

Reclamation funding will be used as a demonstration project with the regulator of GW-SCWC, the Arizona Corporation Commission (ACC). GW-SCWC will seek approval from the ACC for a permanent program funded solely by GWR, which could lead to a greater rate of savings year after year.

- **Describe any permits and agency approvals that will be required along with the process and timeframe for obtaining such permits or approvals.**
No permits are required for this program. Turf removal rebate application and program compliance will be conducted by GWR conservation staff.
- **Identify and describe any engineering or design work performed specifically in support of the proposed project. What level of engineering design is the project currently? If additional design is required, describe the planned process and timeline for completing the design.**
No engineering or design work is required to support this program.
- **Does the applicant have access to the land or water source where the project is located? Has the applicant obtained any easements that are required for the project? If the applicant does not yet have permission to access the project location, describe the process and timeframe for obtaining such permission.**
GWR owns and operates all the wells from which water service is provided in this service area as well as the wastewater treatment plant and the recycled water delivery infrastructure. No easements will be required for this program.
- **Identify whether the applicant has contacted the local Reclamation office to discuss the potential environmental and cultural resource compliance requirements for the project and the associated costs. Has a line item been included in the budget for costs associated with compliance? If a contractor will need to complete some of the compliance activities, separate line items should be included in the budget for Reclamation's costs and the contractor's costs.**

GWR conservation staff met virtually with Reclamation on 6/18/24 to discuss potential environmental and cultural resource compliance requirements for the program as well as budgeted costs. Reclamation staff did not estimate any contracted work to be required at this time.

E.1.4. Evaluation Criterion D. Nexus to Reclamation (5 Points)

- **Is the proposed project connected to a Reclamation project or activity? If so, how? Please consider the following:**
 - *Does the applicant have a water service, repayment, or operations and maintenance(O&M) contract with Reclamation?*
GW-SCWC does not have a water service, repayment or O&M contract with Reclamation.
 - *If the applicant is not a Reclamation contractor, does the applicant receive Reclamation water through a Reclamation contractor or by any*

other contractual means?

GWR-SCWC, the applicant, does not receive any Reclamation water, however GW-Belmont Water Company does receive water from a subcontract with the Central Arizona Water Conservation District (CAWCD).

- *Will the proposed work benefit a Reclamation Project area or activity?*
GWR is not aware of any Reclamation Project activities or areas that this program would affect.

E.1.5. Evaluation Criteria E. Presidential and Department of the Interior Priorities (15 points)

E.1.5.1. Sub-criterion No. E1. Climate Change

Points will be awarded based on the extent the project will reduce climate pollution; increase resilience to the impacts of climate change; protect public health; and conserve our lands, waters, oceans, and biodiversity. Address the following as relevant to your project.

• Please provide specific details and examples on how the project will address the impacts of climate change and help combat the climate crisis.

The Phoenix Metropolitan area in Arizona is particularly vulnerable to the effects of climate change due to limited water supplies resulting from low annual precipitation rates, increasing greenhouse gas emissions from a rapidly increasing population and a climate prone to high rates of evaporation. The Turf Removal Incentive Program directly addresses the impacts of climate change in this region through the annual reduction of 3.3 million gallons of treated water that is pumped, delivered and consumed for the lifetime of the converted landscapes, thereby decreasing the negative effects of climate change on the population and environment in this area.

• Does this proposed project strengthen water supply sustainability to increase resilience to climate change? Does the proposed project contribute to climate change resiliency in other ways not described above?

The project's estimated annual decrease of 3.3 million gallons of water demonstrates how water supply reliability can be fortified through the reduction of irrigation demands. This program will simultaneously reduce water demand and all resource inputs from GW-SCWC including reductions in equipment and replacement costs, personnel time, pumping and electrical costs, and more. Conserving water through reduced demand also results in energy conservation which in turn can alleviate the impact of greenhouse gas emissions and lessen the impacts of climate change. Further, desert landscapes are more sustainable in a warming desert climate than turfgrass.

E.1.5.2. Sub-criterion No. E2. Disadvantaged or Underserved Communities

•Please use the White House Council on Environmental Quality’s interactive Climate and Economic Justice Screening Tool, available online at Explore the map – Climate & Economic Justice Screening Tool (<https://screeningtool.geoplatform.gov>) to identify any disadvantaged communities that will benefit from your project.

The White House Council on Environmental Quality’s interactive Climate and Economic Justice Screening Tool indicates the existence of disadvantaged communities within the GWR-SCWC service area.

• If applicable, describe how the project benefits those disadvantaged or underserved communities identified using the tool. For example, does the project increase reliability of water supplies, improve water quality, provide economic growth opportunities, improve or expand public access to natural areas or recreation, or provide other benefits in a disadvantaged or underserved community?

The proposed program will benefit disadvantaged communities through improved water quality and supply reliability. Turf removal results in reduced pesticide use, decreasing local stormwater pollution which can recharge harmful contaminants back into the aquifer. The program will also increase GWR’s water supply reliability through reduction in irrigation demand. It also can provide financial benefits to disadvantaged populations by incentivizing water conservation program implementation which can reduce monthly water costs for these communities. School and park participation will also result in significant water savings that will allow these entities to invest the additional funds saved into better serving the needs of disadvantaged members of the community.

E.1.5.3. Sub-criterion No. E3. Tribal Benefits

• Does the proposed project directly serve and/or benefit a Tribe? Will the project improve water management for a Tribe?

The proposed program does not directly serve a Tribe.

•Does the proposed project support Tribal resilience to climate change and drought impacts or provide other Tribal benefits such as improved public health and safety by addressing water quality, new water supplies, or economic growth opportunities?

The proposed program does not directly correlate with any climate change or drought related benefits to Tribes.

Does the proposed project support Reclamation’s Tribal trust responsibilities or a Reclamation activity with a Tribe?

The proposed program is not directly linked with any Tribal activities associated with Reclamation.

D.2.2.3. Budget Narrative

Funding Plan

GW-SCWC requests \$50,000 from the Bureau of Reclamation. The total cost of the Turf Removal Incentive Program is \$100,000. If all funding is granted, \$97,225 will be allocated for program incentives and the remaining \$2,775 will cover program administration costs including labor and marketing supplies. No significant costs for Environmental Compliance & Natural Resources are expected. GWR will fund all non-Reclamation Program costs at an amount of \$50,000. GWR has allocated funds for the program, and this budgeted allocation will fund GWR's cost share for the Turf Removal Incentive Program. The awarded funding is anticipated to aid GW-SCWC in establishing a turf rebate program. This new program made possible with the assistance of Reclamation funding will be used as a demonstration project with the regulator of GW-SCWC, the Arizona Corporation Commission (ACC). GW- SCWC will seek approval from the ACC for a permanent program funded solely by GWR, which could lead to a greater rate of savings year after year.

Budget Proposal

Table 2: Total Project Cost

FUNDING SOURCE	AMOUNT
Costs to be reimbursed with the requested Federal Funding	\$50,000
Costs to be paid by the applicant	\$50,000
TOTAL ESTIMATED PROJECT COST	\$100,000

Table 3: Budget Proposal

BUDGET ITEM DESCRIPTION	COMPUTATION		Quantity Type	TOTAL COST
	\$/Unit	Quantity		
Salaries and Wages				
Water Resource and Conservation Specialist	\$25	105	Hours	\$2,625
Fringe Benefits				
Full Time Employees	N/A			\$0
Supplies and Materials				
Sign Printing	\$65	1	Each	\$65
Marketing Materials	\$85	1	Each	\$85
Contractual/Construction				
Turf Removal Incentive	\$1/SF		SF	\$97,225
TOTAL ESTIMATED PROJECT COSTS				\$100,000

Budget Narrative

If awarded, GW-SCWC will use its own budget to cover the cost of incentives paid to customers. GWR also understands the administrative commitment associated with implementing the program, including employee wages and marketing supplies, and will cover those costs through an allocated budget.

Salaries and Wages

Program Manager

GWR's Water Resources and Conservation Specialist, Kallika Naylor, is the program manager for the Turf Removal Incentive Program. The Program Manager will complete administrative tasks for the program, including grant administration, creation of application content and refining participant criteria, developing promotional materials and providing program information to the public, reviewing applications, conducting pre and post landscape inspections, coordinating with the accounting department to process rebates, and preparing program performance and a final report. A total of \$2,775 is estimated to be needed to manage and promote the program over the 2-year period allotted by Reclamation.

Fringe Benefits

No fringe benefits are included in the project budget.

Travel

There will be no travel expenses attributed to this grant.

Equipment

There will be no equipment purchases attributed to this grant.

Supplies and Materials

The cost of printing signage for the company lobby as well as printed materials such as program brochures are included at a total estimated cost of \$150.

Contractual

Program participants will be required to complete and sign a participation application form. Program participants will be granted \$1.00 per square foot of replaced turf.

Third-Party In-Kind Contributions

No Third-Party In-Kind Contributions are included in the project budget.

Environmental and Regulatory Compliance Costs

The Natural Resources Department at Reclamation did not estimate any costs associated to Environmental and Regulatory Compliance to be required.

Indirect Costs

There are no indirect costs attributed to this grant.

D.2.2.4. Environmental and Cultural Resources Compliance

- **Will the proposed project impact the surrounding environment (e.g., soil [dust], air, water [quality and quantity], animal habitat)? Please briefly describe all earth-disturbing work and any work that will affect the air, water, or animal habitat in the project area. Please also explain the impacts of such work on the surrounding environment and any steps that could be taken to minimize the impacts.**

No, the Turf Removal Incentive Program provides incentives for turf removal and conversion to water efficient landscaping and should not disturb or negatively impact the surrounding environment. Any program work that is performed will be completed on private property that is considered already disturbed.

- **Are you aware of any species listed or proposed to be listed as a Federal threatened or endangered species, or designated critical habitat in the project area? If so, would they be affected by any activities associated with the proposed project?**

GWR is not aware of any species listed or proposed to be listed as a Federal threatened or endangered species or designated critical habitat in the program area. The program will be implemented in existing landscaped areas that are considered as already disturbed. These areas are not considered critical habitat nor will affect species listed or proposed to be listed as a Federal endangered or threatened species.

- **Are there wetlands or other surface waters inside the project boundaries that potentially fall under CWA jurisdiction as “Waters of the United States”? If so, please describe and estimate any impacts the proposed project may have.**

There are no wetlands or other surface waters inside the proposed Program area that fall under CWA jurisdiction as “Waters of the United States”. The program will be implemented on landscaped area that is considered already disturbed.

- **When was the water delivery system constructed?**

Global Water Resources first constructed its water delivery system in Maricopa in 2003. The system has been expanded and developed since 2003.

- **Will the proposed project result in any modification of or effects to, individual features of an irrigation system (e.g., headgates, canals, or flumes)? If so, state when those features were constructed and describe the nature and timing of any extensive alterations or modifications to those features completed previously.**

No, the Turf Removal Incentive Program will not result in any modification of or effects to individual features of an irrigation system.

- **Are any buildings, structures, or features in the irrigation district listed or eligible for listing on the National Register of Historic Places? A cultural resources specialist at your local Reclamation office or the State Historic Preservation Office can assist in answering this question.**

GWR is not aware of any buildings, structures, or features in the Program area listed or eligible for listing on the National Register of Historic Places. The Turf Removal Incentive Program will be implemented at specific properties in landscaped areas considered already disturbed.

- **Are there any known archeological sites in the proposed project area?**
There are no known archeological sites in the proposed Program area. The Turf Removal Incentive Program will be implemented at specific properties in landscaped areas considered already disturbed.
- **Will the proposed project have a disproportionately high and adverse effect on low income or minority populations?**
The program is not expected to have a disproportionately high and adverse effect on low income or minority populations. It is expected to benefit disadvantaged communities by offering financial incentives to reduce overall outdoor water use and associated costs.
- **Will the proposed project limit access to, and ceremonial use of, Indian sacred sites or result in other impacts on tribal lands?**
No, the program will not limit access to, and ceremonial use of, Indian sacred sites or result in other impacts on tribal lands.
- **Will the proposed project contribute to the introduction, continued existence, or spread of noxious weeds or non-native invasive species known to occur in the area?**
No, the program is not expected to contribute to the introduction, continued existence, or spread of noxious weeds or non-native invasive species known to occur in the area. A list of low water use, drought-tolerant, non-invasive plants will be used for selection and implementation in the converted landscapes.

D.2.2.5. Required Permits or Approvals

There are no required permits anticipated for the Turf Removal Incentive Program. All Program-related applications and approvals will be administered by GWR.

D.2.2.6. Overlap or Duplication of Effort Statement

No overlap will occur between this program and other proposals submitted to Reclamation in terms of activities, costs, or commitment of key personnel. The proposal submitted under this program does not in any way duplicate any proposal or

project that has been or will be submitted for funding consideration to any other potential funding source Federal or non-Federal.

D.2.2.7. Conflict of Interest Disclosure Statement

No actual or potential conflicts of interest exist at the time of this application submission.

D.3. Unique Entity Identifier (UEI) and System for Award Management (SAM)

Global Water Resources, Inc. UEI: HEFYKWWHELJ1

Technical Proposal Works Cited

1.

Arizona Department of Water Resources. (2020). *PINAL ACTIVE MANAGEMENT AREA*

FOURTH MANAGEMENT PLAN. Retrieved July 1, 2024, from

https://www.azwater.gov/sites/default/files/media/PINAL_FINAL_DEC2020_0.pdf.

2.

Arizona Department of Water Resources. (2020a). *Pinal Active Management Area Low-Water-*

Use Drought-Tolerant Plant List. Retrieved July 1, 2024, from

https://www.azwater.gov/sites/default/files/2022-11/Pinal_LWUPL_FinalV2.pdf

3.

U.S. Department of the Interior Bureau of Reclamation. (2018). *Eloy and Maricopa-Stanfield*

Basin Study.

Stephen Q. Miller
Pinal County Board of Supervisors
Supervisor, District 3



PINAL COUNTY
WIDE OPEN OPPORTUNITY

June 26, 2024

Jake Lenderking
Global Water Resources
21410 N. 19th Ave., Suite 220
Phoenix, AZ 85027

Dear Mr. Lenderking,

We understand that Global Water - Santa Cruz Water Company, Inc. (Global Water) is submitting a WaterSMART Grants: Small-Scale Water Efficiency Projects grant application by the United States Bureau of Reclamation with a project start date beginning in 2025.

This grant would help fund a Turf Removal Incentive Program for customers within the City of Maricopa serviced by Global Water as part of its long-term goal of water conservation, water supply reliability and efficient water management as well as provide financial incentives to residential and non-residential members of the community, resulting in reductions in water used for irrigation.

I fully support Global Water's efforts in creating this important water efficiency program and encourage the Bureau of Reclamation to support Global Water with federal funding for this program that will promote water conservation through the transformation of high water use turf areas to water efficient landscaping.

If you have any questions or need additional information regarding our support, please feel free to contact me.

Sincerely,

Stephen Miller
Pinal County Supervisor

June 27, 2024

Dear Mr. Lenderking,

We understand that Global Water - Santa Cruz Water Company, Inc. (Global Water) is submitting a WaterSMART Grants: Small-Scale Water Efficiency Projects grant application by the United States Bureau of Reclamation with a project start date beginning in 2025.

This grant would help fund a Turf Removal Incentive Program for customers within the City of Maricopa serviced by Global Water as part of its long-term goal of water conservation, water supply reliability and efficient water management as well as provide financial incentives to residential and non-residential members of the community, resulting in reductions in water used for irrigation.

I fully support Global Water's efforts in creating this important water efficiency program and encourage the Bureau of Reclamation to support Global Water with federal funding for this program that will promote water conservation through the transformation of high water use turf areas to water efficient landscaping.

If you have any questions or need additional information regarding our support, please feel free to contact me.

Sincerely,



Benjamin Bitter

City Manager
City of Maricopa



Eloy and Maricopa-Stanfield Basin Study

Contacts: Valerie Swick, vswick@usbr.gov 623-773-6272
Jake Lenderking Jake.Lenderking@gwresources.com 480-225-4038

Background: The Eloy and Maricopa-Stanfield (EMS) Basin Study is located in Central Arizona within the Arizona Department of Water Resources (ADWR) Pinal Active Management Area (Pinal AMA). Water demand in the Pinal AMA has historically been dominated by the agricultural sector. Pinal AMA management goals include: continue to develop non-irrigation water uses, support the agricultural economy as long as feasible, and preserve water supplies for future non-irrigation uses. In 1987, the Central Arizona Project began delivering Colorado River supplies to the Pinal AMA and surface water supplies replaced groundwater mining. If a water shortage is declared, surface water supplies may be reduced, leading to increased groundwater pumping. To address water supply uncertainties, the EMS Basin Study will assess current and future water demands and supplies and develop strategies to help ensure future water supply sustainability. The EMS Basin Study will be a technical assessment and will not make statements of policy or future commitments by Reclamation or its cost-share partners.



Cost-share Partners: Pinal Partnership Water Resources Committee; Central Arizona Project; Arizona Department of Water Resources (ADWR); Pinal County; Pinal County Water Augmentation Authority; Global Water Resources, Inc.; Arizona Water Company; Cities of Casa Grande and Eloy; and Maricopa Stanfield Irrigation and Drainage District.

Study Area: The EMS Basin Study area encompasses sub-basins identified by ADWR as the Eloy and Maricopa-Stanfield sub-basins of the Pinal AMA in Pinal County, Arizona.

Study Objectives:

- Compile water demand and supply data and develop future demand projections.
- Select relevant climate change scenarios.
- Update the ADWR Pinal AMA Groundwater Model to evaluate groundwater conditions.
- Compile information and analyze infrastructure needs and vulnerabilities.
- Formulate and assess adaptation and mitigation strategies to address water supply vulnerabilities.
- Complete an Economic Analysis and prepare a Final Report.

Stakeholder/Public Involvement: The Pinal Partnership is the lead for stakeholder involvement. A Stakeholder Advisory Team will be coordinated through the Water Resources Committee.

Cost: The total cost of the 3 year study is \$1,360,000. Cost-share partners will contribute \$680,000 of in-kind services. Reclamation will contribute \$680,000 for work completed by Reclamation or its contractors.

