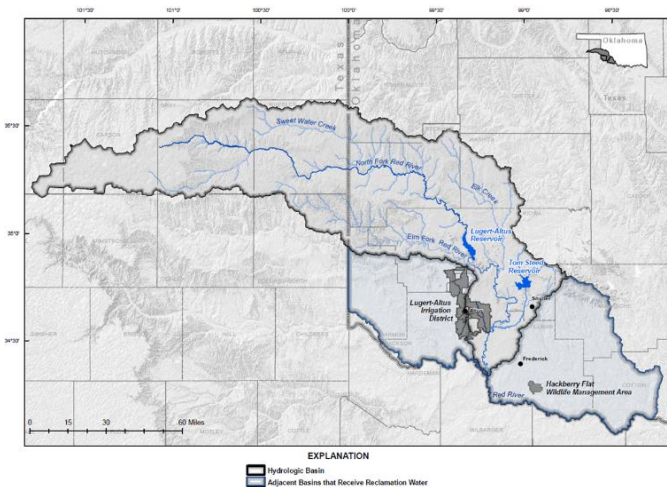




Upper Red River Basin Study

Fact Sheet

The Upper Red River Basin Study (Study) was a collaborative effort between the Bureau of Reclamation (Reclamation), Oklahoma Water Resources Board, Lugert-Altus Irrigation District, and Mountain Park Master Conservancy District to evaluate strategies to improve water supply reliability and drought resiliency of Lugert-Altus Reservoir and Tom Steed Reservoir. Together, the two reservoirs provide storage for 99 percent of the surface water supplies within the area, including municipal and industrial water to 43,000 people and irrigation water for 48,000 acres of land. The study took seven years to complete at a cost of three million dollars.

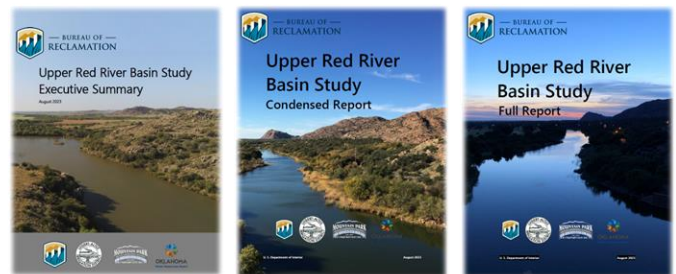


Accomplishments

- ❖ Improved understanding of the factors affecting the water supplies of Lugert-Altus and Tom Steed reservoirs, including the current and future climate and hydrology.
- ❖ Characterization of existing and future water supplies and demands in the basin.
- ❖ The development of new, integrated groundwater and surface water models and an analysis of the impacts of groundwater pumping and stream diversions on inflow into Lugert-Altus and Tom Steed reservoirs.
- ❖ An evaluation of adaptation strategies to improve water supply reliability in the Lugert-Altus and Tom Steed reservoir basins. Among the many strategies evaluated through modeling was a new framework for managing water rights during periods of drought.
- ❖ A review of legal and policy issues, including the extent to which adaptation strategies could be implemented within existing or new legal and policy frameworks.

The full body of work is comprised of three reports and associated appendices:

- Executive Summary
- Condensed Report
- Full Report



Altus Dam, Lugert-Altus Reservoir.



Mountain Park Dam, Tom Steed Reservoir.

These reports are published on Reclamation's website and can be found at:

<https://www.usbr.gov/watersmart/bsp/completed.html> or the QR code provided below.



[Completed Studies | Basin Studies](https://www.usbr.gov/watersmart/bsp/completed.html)
([usbr.gov](https://www.usbr.gov))

Contact Information: Collins Balcombe,
Study Manager; cbalcombe@usbr.gov,
(512) 899-4162