

Brown Trout Incentivized Harvest Update

- **Initial project has been completed (11/20-9/24)**
 - Included funds from both NPS and BOR Funding from NPS and BOR.
 - 6,348 brown trout were removed from the Glen Canyon Reach
 - Brown trout harvest has been low in 2024 (chart)
 - Higher harvest was associated with higher rewards (graph)
- **An additional \$200,000 from IRA fund source –**
 - 2-years (2024-2025)
 - \$50,000-\$60,000 sponsor tribal youth fishing trips
 - Current reward is \$50/fish plus \$15/PIT tag
 - Some additional reward incentives planned 2025



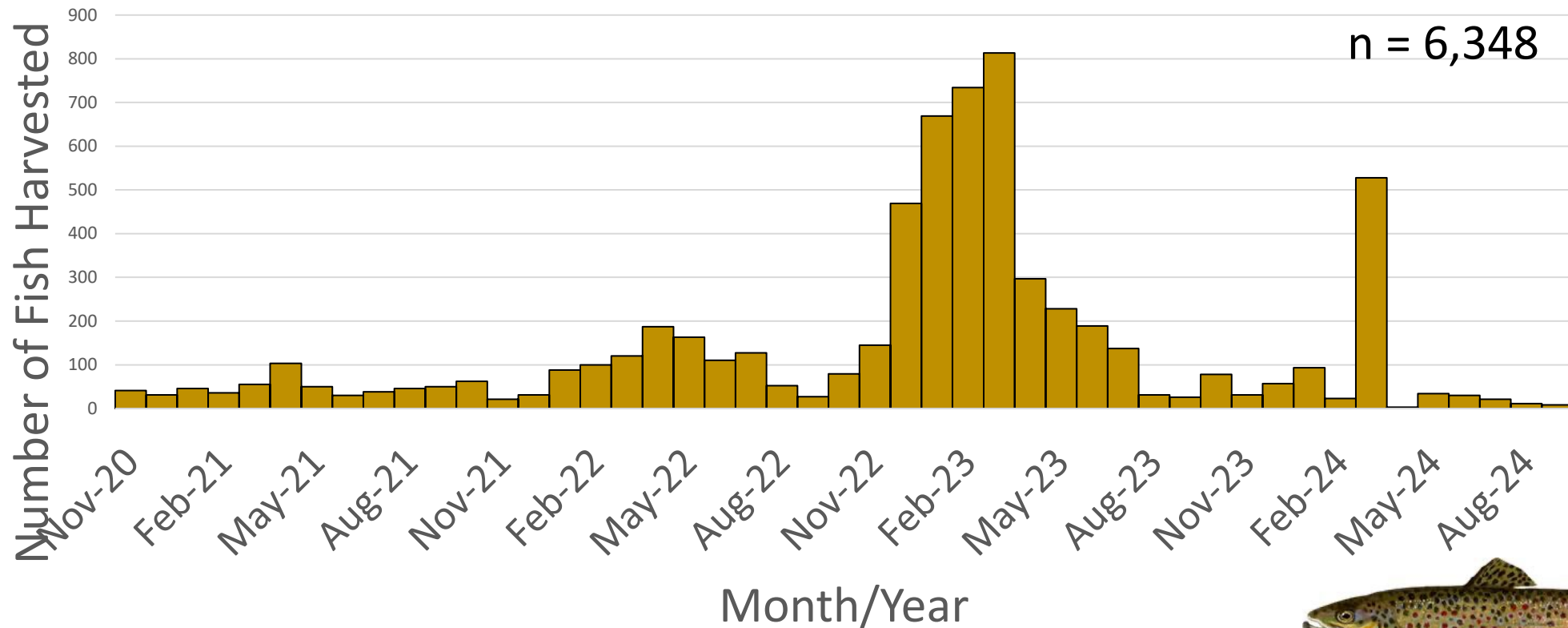
Brown Trout Incentivized Harvest Update

2024 Monthly Totals (green)

Month	Year	Monthly Payout	Top Angler Payout/Month	No. Anglers	Unknown Length	Fish Harvested 6-12 inches	Fish Harvest 12-18 inches	Fish Harvest 18-24 inches	Fish Harvested > 24 inches	Total Number of Brown Trout Harvested	Total Number of PIT tags returned
December	2023	\$2,046	\$1,257	8	0	27	28	2	0	57	11
January	2024	\$3,174	\$933	12	0	17	73	3	0	93	7
February	2024	\$804	\$198	9	0	4	19	0	0	23	3
March	2024	\$29,150	\$11,370	45	6	88	407	26	1	528	57
April	2024	\$165	\$65	3	0	1	2	0	0	3	1
May	2024	\$1,715	\$350	15	1	11	21	1	0	34	1
June	2024	\$1,595	\$380	14	1	13	15	1	0	30	3
July	2024	\$1,110	\$515	4	0	6	13	2	0	21	4
August	2024	\$565	\$350	3	0	1	10	0	0	11	1
TOTAL		\$461,468.00	\$174,641.00	1,026	171	1,285	3,947	901	36	6,340	798

Brown Trout Incentivized Harvest Update

Brown Trout Harvested (Nov 2020-Sep 2024)



Slough Project, EA & FONSI





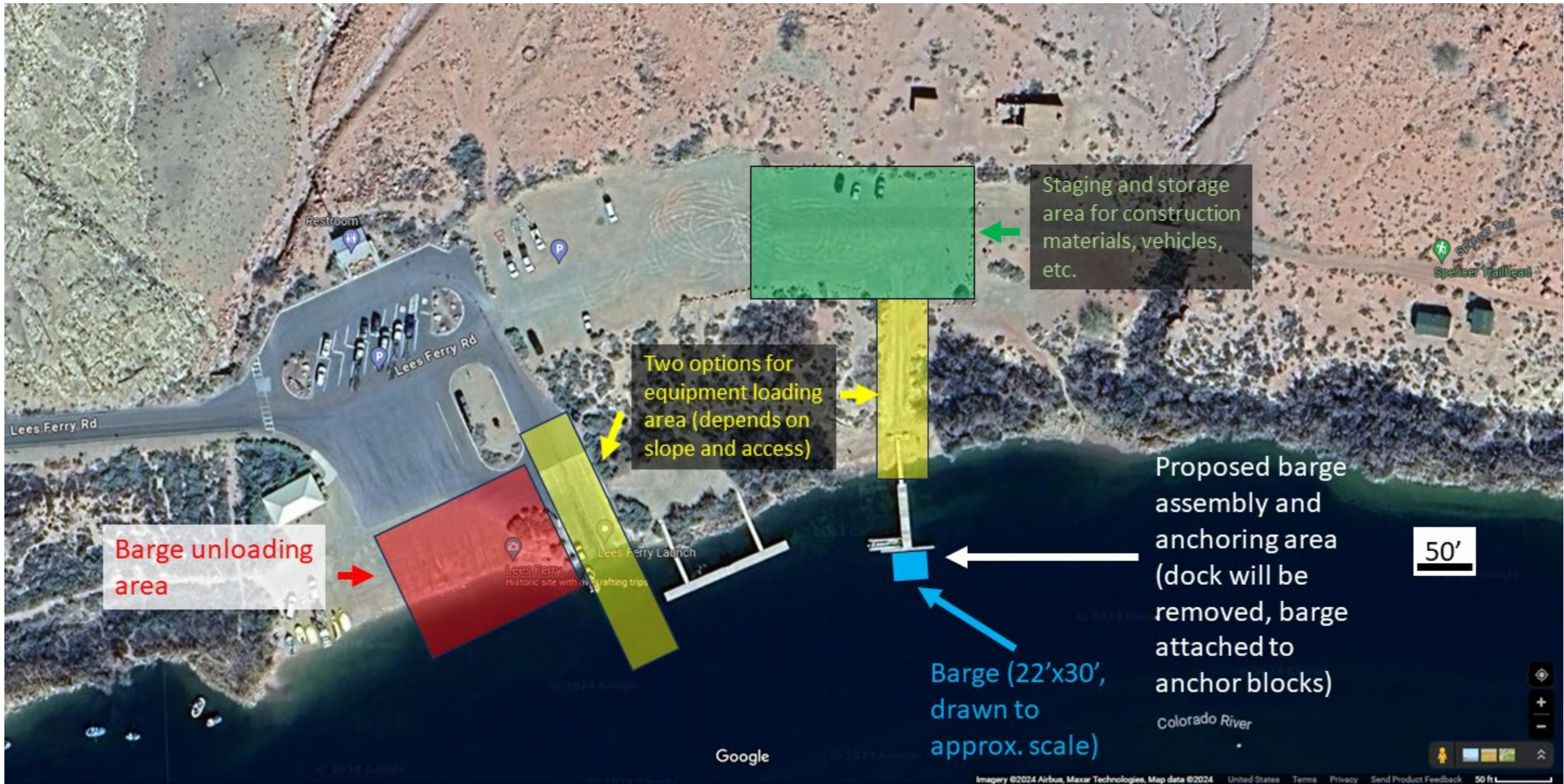
No warranties, expressed or implied, are made by the Bureau of Reclamation as to the accuracy, reliability, or completeness of represented data, or fitness for a particular use. While best available resources were used at the time of production, spatial information may not meet national map accuracy standards. Information depicted, though derived from authoritative sources, should not be considered authoritative with respect to boundary delineation.

Projected Coordinate System: NAD 1983 UTM Zone 12N
Data Attribution: USDA NAIP imagery
Albuquerque Area Office, Upper Colorado Basin



- Lower Sluice
- Outlet to Lower Sluice
- Soil Test Pit
- Upland Point
- Channel Centerline
- Channel Cut Extent
- Slough Fill Area
- Bar Scalp Area

19,500 cfs on 7/14/2023 11:30 AM



Barge unloading area

Two options for equipment loading area (depends on slope and access)

Staging and storage area for construction materials, vehicles, etc.

Proposed barge assembly and anchoring area (dock will be removed, barge attached to anchor blocks)

Barge (22'x30', drawn to approx. scale)

50'

Google

-12-Mile Slough Considerations - GLCA

- One year timeline – EA & FONSI remains on track.
- If FONSI approved, project scheduled for January to March 2025.
- Currently working on FONSI, with intent to complete it November.
- Wrapping up compliance – Wetlands, Corps permit, ESA, NHPS 106.
- Consultations with tribes continue.
- Public Rvw Comments – 23 parties – Review, summary, response.
- Scoping Period (July)– 18 people + 5 states + 1 Fed +1 Co. + 1 other
- No funding agreement to date for project, prep and mitigation

-12-Mile Slough Considerations - GLCA

- Science reports are still pending for salamanders and spring
- Salamanders are native; only population along the river in Canyons
- Spring results:
 - Conductance and Comparative water levels indicate a spring
 - Major ions, Nutrients and Stable isotopes indicate a spring
 - Awaiting result and interpretation for Tritium (age of water)
 - Compares springs – upper slough vs Leopard Frog Marsh
 - Compares springs with river mainstem

-12-Mile Slough Considerations - GLCA

- Since the EA and FONSI are currently in active deliberative process, we limit our comments to those just shared in efforts to not compromise the process.



A Few Questions?