



— BUREAU OF —
RECLAMATION

Tucker Trawl and Hydroacoustic Update

Bureau of Reclamation

Lee Traylor



Tucker Trawl

Glen Canyon Dam Turbine Outflow Netting

2024 Progress Report

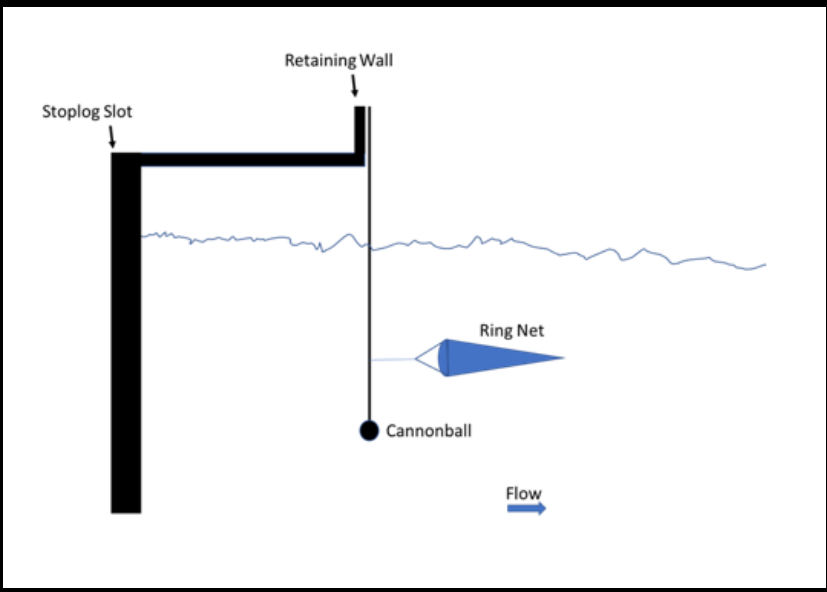
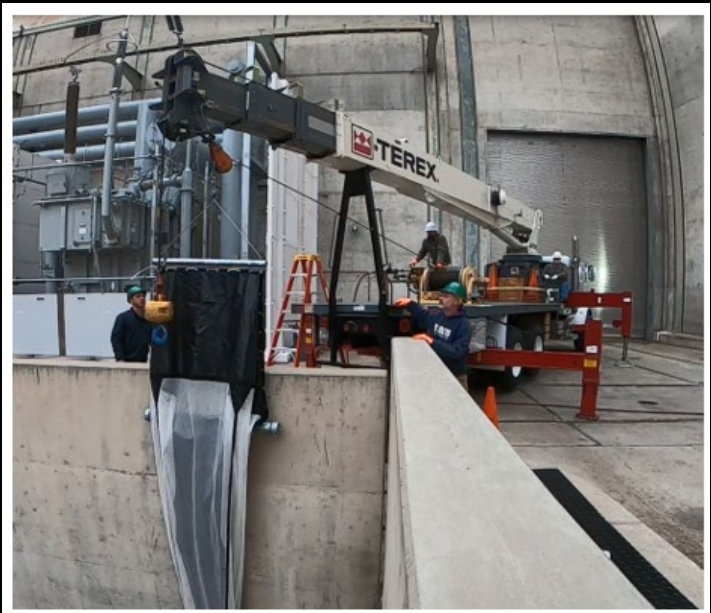
U.S. Geological Survey,
Western Fisheries Research Center and
Grand Canyon Monitoring and Research Center

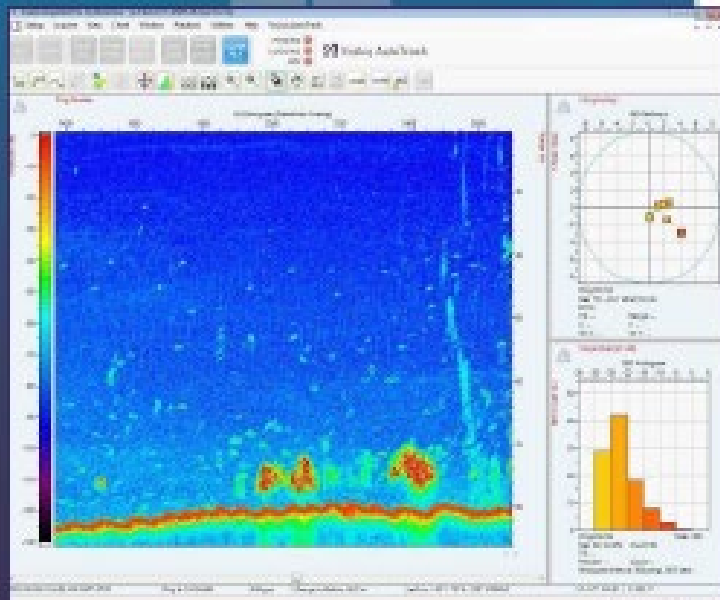
Version: 28 June 2024





Ring Net





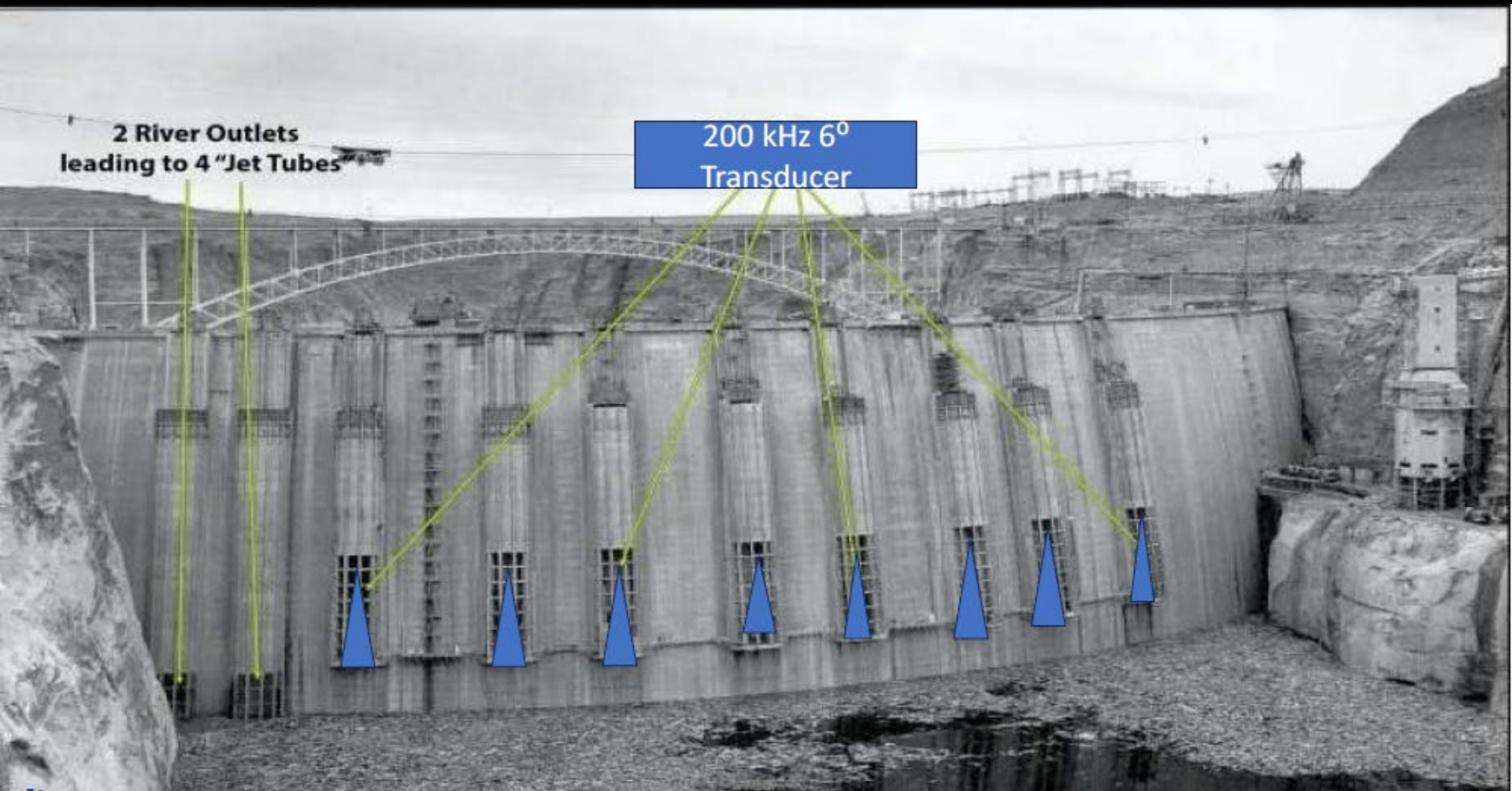
Applications

- Mobile surveys to assess fish population, biomass and size distribution
- Fixed-station monitoring at rivers, dams, water intakes
- ASV/USV surveys, surface buoys, and other unmanned or unattended deployments
- Fish passage, entrainment, and migration studies
- Habitat mapping, seagrass, substrate classification and bathymetric surveys



2 River Outlets
leading to 4 "Jet Tubes"

200 kHz 6°
Transducer





What's Next?

- Get Hydroacoustic Service Under Contract
 - Fingers Crossed September-October
 - Install 1st transducers in winter
 - Coordination with Dam Operation Maintenance
 - Coordination with Reclamation Dive Team
 - Likely won't have everything installed by summer
 - Collect data monthly and analysis monthly
- Physical Sampling above and below GCD?

Questions?!?!—



— BUREAU OF —
RECLAMATION