



GCMRC Science Update – Sediment and Fisheries

Scott VanderKooi

Southwest Biological Science Center

Grand Canyon Monitoring and Research Center



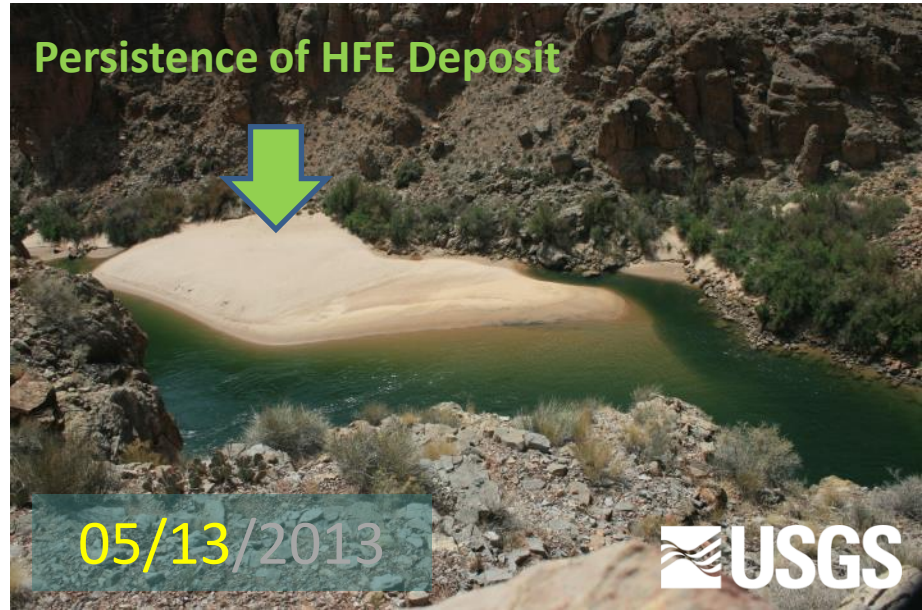
Cathedral Wash -- RM 2.5 L



"22-Mile" -- RM 22 R



Sand Pile -- RM 30 R



Carbon -- RM 65.1 R



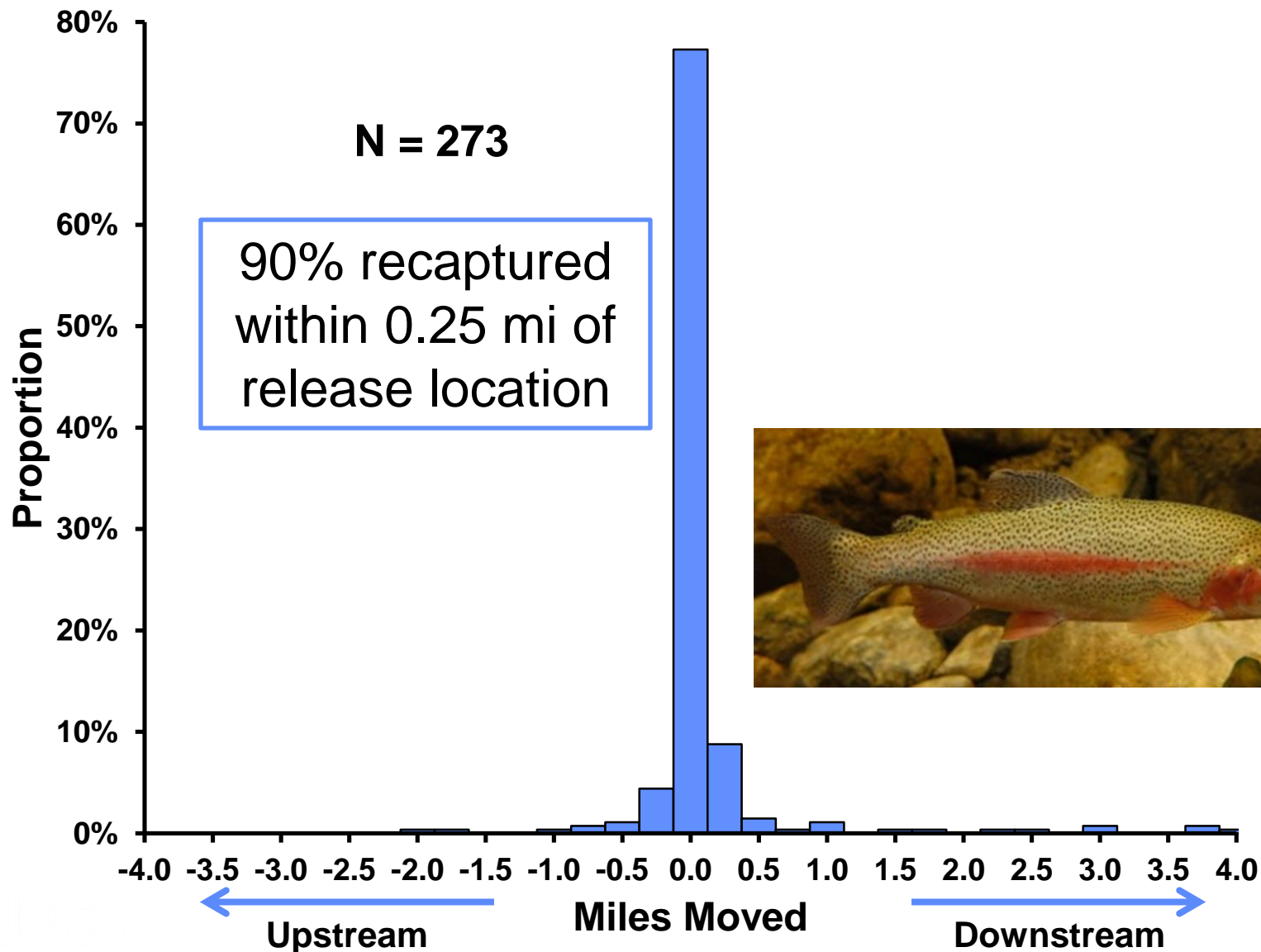
Emerald Camp -- RM 104 R



Emerald Camp -- RM 104 R



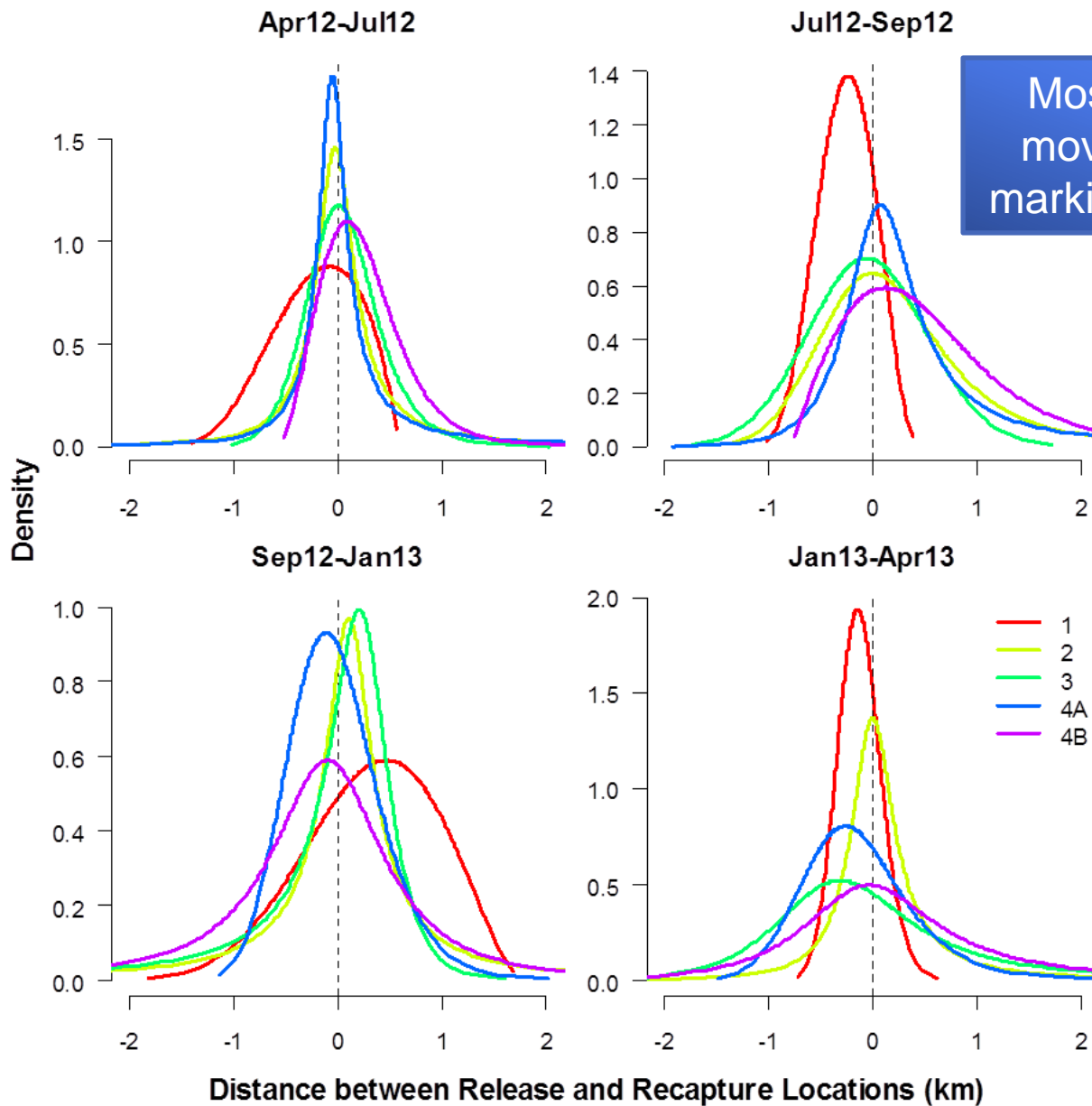
Age-0 Rainbow Trout Movement in Glen Canyon: October to December 2012



Rainbow Trout Natal Origins: Glen Canyon and Marble Canyon



Rainbow Trout Movement



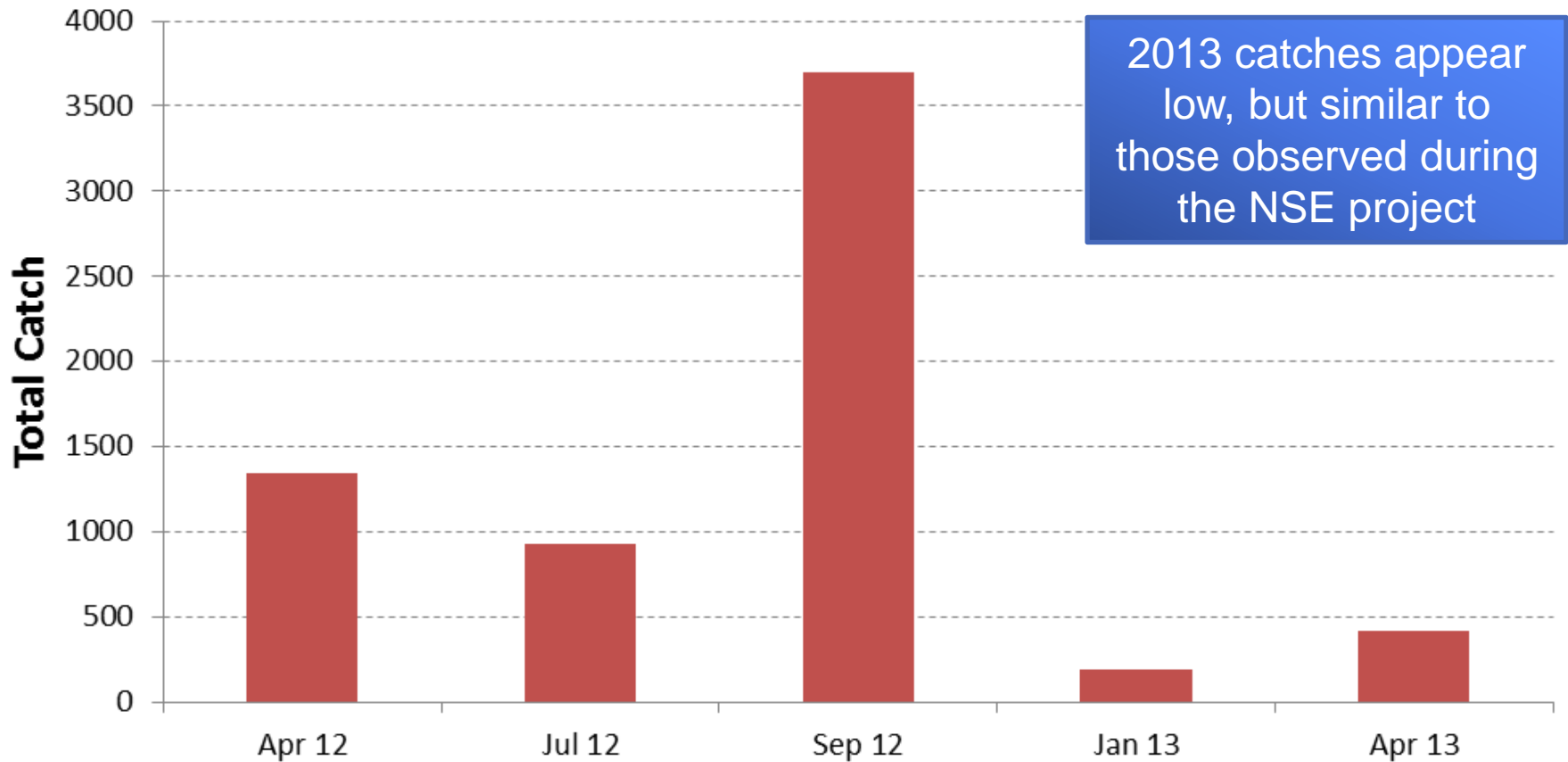
1 = Glen Canyon
2 = House Rock
3 = Buck Farm
4A = Above LCR
4B = Below LCR

(Preliminary Data
from Korman
and Yard 2013,
Do Not Cite)

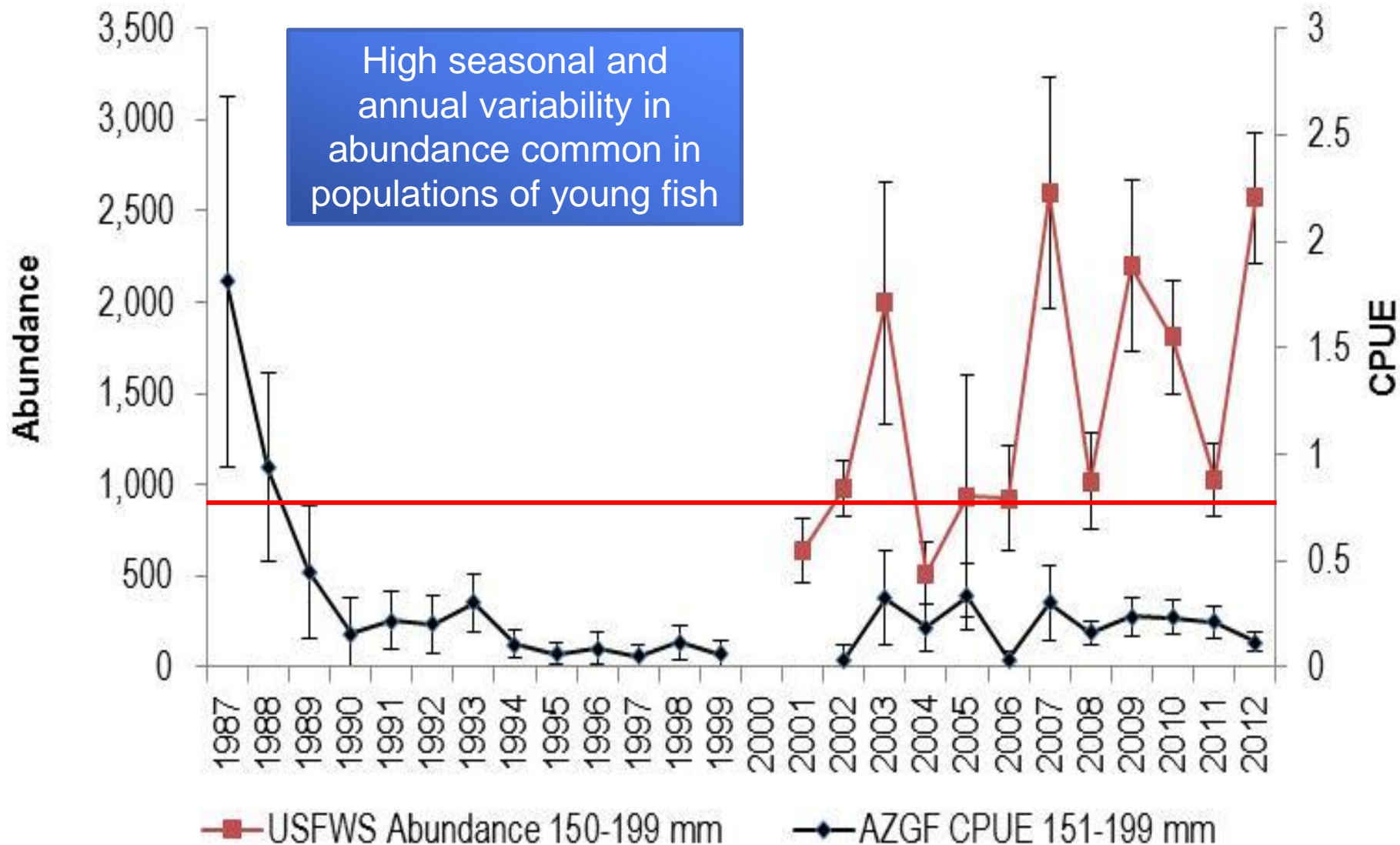
Juvenile Chub Monitoring



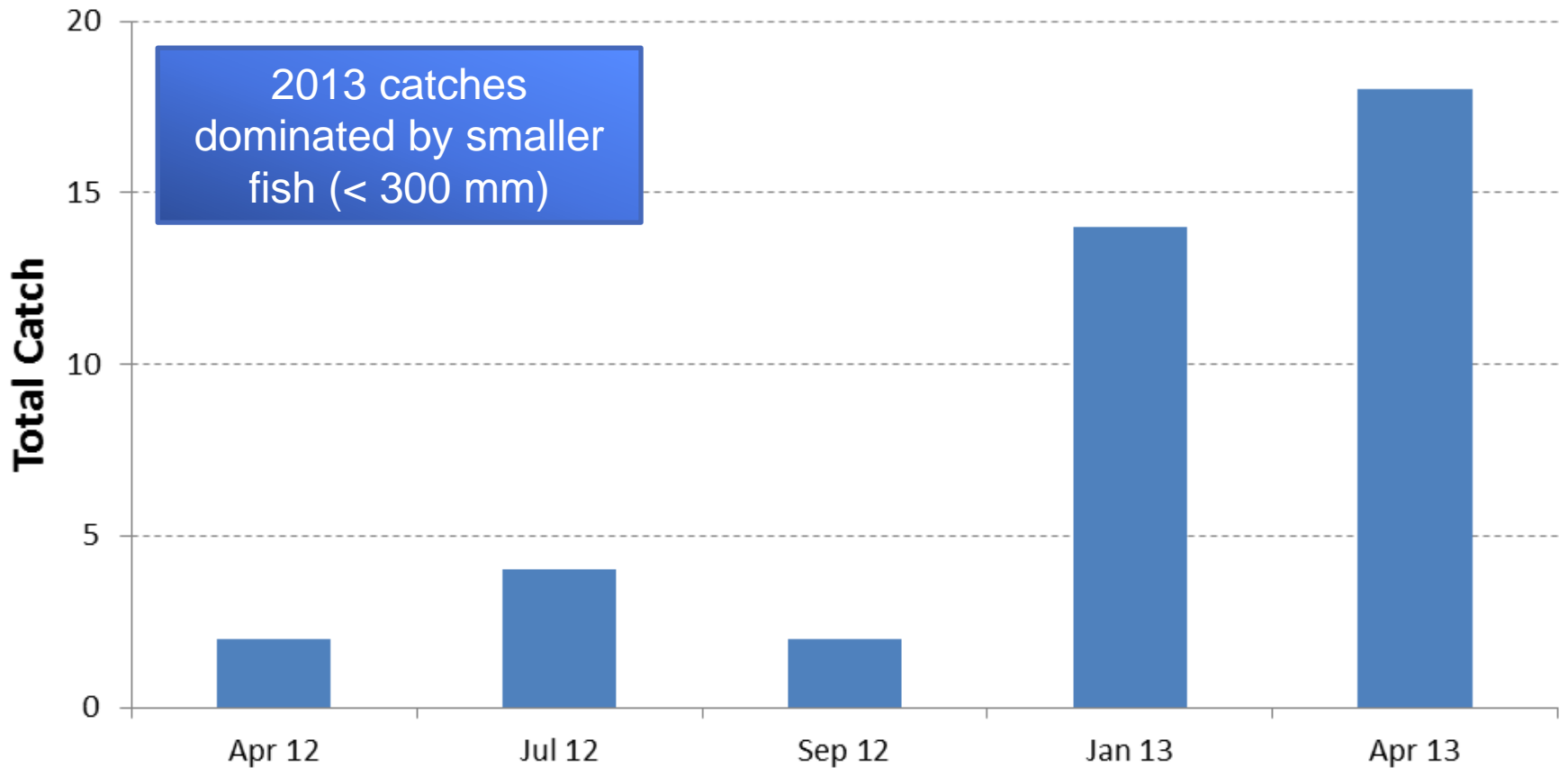
Juvenile Chub Monitoring: Humpback Chub Catches



Spring Abundance & CPUE Humpback Chub 150-199 mm



Juvenile Chub Monitoring: Brown Trout Catches



Tailwater Synthesis Update

- Fish population data for 57 tailwaters
 - Promised data from 15 more
- Duration of data sets from 1 – 45 years
 - 34 systems: 1 – 10 years
 - 15 systems: 11 – 20 years
 - 8 systems: 21+ years
- Invertebrate data from half (generally poor information from most)
- Discharge data from all, temperature data from a few

Questions?

