

Glen Canyon Dam Adaptive Management Work Group August 23, 2018



Stakeholder's Perspective: National Park Service



NPS Parks Represented on AMWG

- Glen Canyon National Recreation Area
- Grand Canyon National Park
- Lake Mead National Recreation Area

Why is NPS on the AMWG?

Our Mission

- “The National Park Service **preserves unimpaired the natural and cultural resources and values of the National Park System** for the enjoyment, education, and inspiration of this and future generations. The Park Service cooperates with **partners** to extend the benefits of natural and cultural resource conservation and outdoor recreation throughout this country and the world.”

NPS at a Glance

❖ Nationally significant natural and cultural resources.

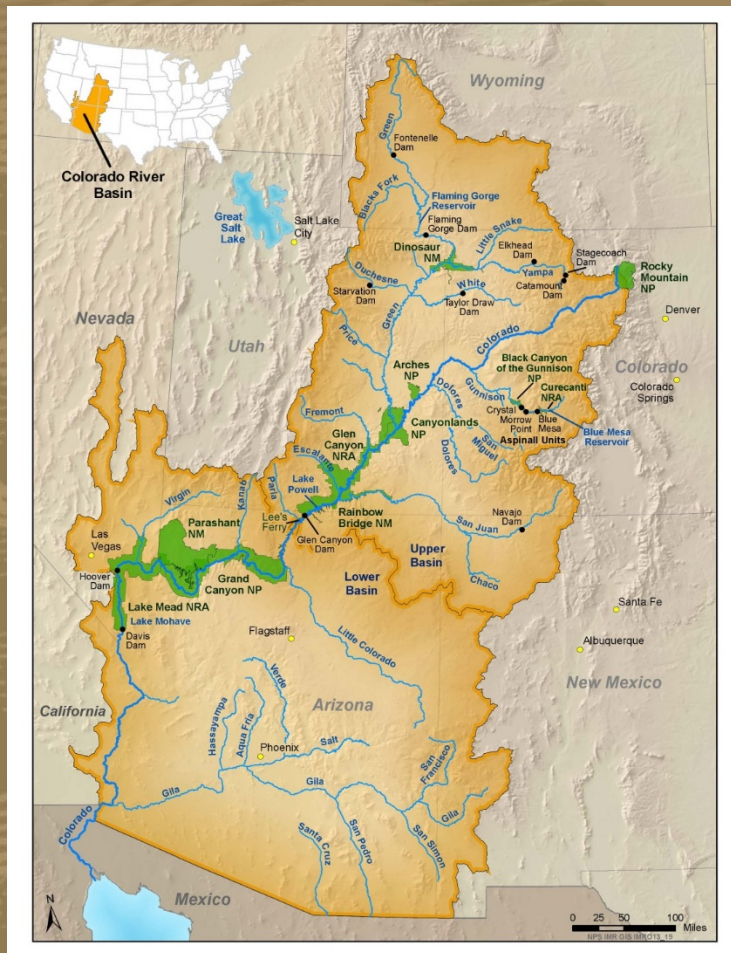
- 417 park system units
- National Trails
- National Historic Landmarks and the National Register
- Community assistance programs

NPS Numbers at a Glance

- ❖ 84 million acres
- ❖ Budget for FY 2018: \$3.2 billion
- ❖ Visits: more than 330 million
- ❖ \$36 billion in economic output to the national economy
 - 10:1 return on investment

What does NPS Hope to Achieve?

Landscape Scale Benefits



- Rocky Mountain National Park
- Dinosaur National Monument
- Black Canyon of the Gunnison National Park
- Curecanti National Recreation Area
- Arches National Park
- Canyonlands National Park
- Glen Canyon National Recreation Area
- Rainbow Bridge National Monument
- Grand Canyon National Park
- Parashant National Monument
- Lake Mead National Recreation Area

Grand Canyon National Park

- Size: 1,217,403 acres
- Staffing: 382
- Visitation: 6 million
- Economic Benefit: \$938 million
- Budget: \$58 million
- Deferred Maintenance:



Grand Canyon Emphasis Areas

- Building a respectful and inclusive workplace
- Colorado River protection and management program
- Modernizing park infrastr
- Bison management
- Desert View Intertribal Cultural Heritage Site
- Backcountry Management Plan
- International Dark Sky Status
- Orphan Mine cleanup
- Natural soundscapes
- Wireless communication and data infrastructure



Glen Canyon National Recreation Area

- **Size:** 1,254,429 acres
- **Staffing:** 147
- **Annual Visitation:** 4.5 million
- **Budget:** \$12 million
- **Deferred Maintenance:** \$116 million
- **Economic Benefit:** \$425 million



EXPERIENCE YOUR AMERICA

Glen Canyon Emphasis Areas

- ORV Plan Implementation
- Horseshoe Bend Visitor Facilities & Parking with city partner
- Hole-in-the-Rock Trail Traditional Cultural Property nomination
- New Front country trails
- Backcountry planning & permit system
- Air Tour Voluntary Agreement
- Concessions
- Quadrilateral Agreement



EXPERIENCE YOUR AMERICA

Lake Mead National Recreation Area

- Size: 1,410,293 acres
- Staffing: Annual Visitation: 8 million
- Budget: \$19 million
- Deferred Maintenance: \$172 million
- Economic Benefit: \$391 million



EXPERIENCE YOUR AMERICA

Lake Mead National Recreation Area

America's Most Diverse National Recreation Area

BLUEPRINT FOR SUCCESS

Emphasis Areas



PEOPLE

GOAL 1:
WORKFORCE ENHANCEMENT

GOAL 2:
SAFETY, HEALTH & WELLNESS

GOAL 3:
COLLABORATIVE SUPPORTIVE CULTURE



PROGRAMS

GOAL 4:
STREAMLINE PRACTICES

GOAL 5:
PROVIDE DIVERSE VISITOR EXPERIENCES

GOAL 6:
MODERNIZE VISITOR EXPERIENCES



PARTNERSHIPS

GOAL 7:
LEVERAGE EXTERNAL OPPORTUNITIES

GOAL 8:
CONNECT WITH NEW AUDIENCES

GOAL 9:
PUBLIC SAFETY

What's Important about the AMP?

Grand Canyon Protection Act of 1992

Sec. 1802. (a) The Secretary shall operate Glen Canyon Dam... in such a manner as to **protect, mitigate adverse impacts to, and improve the values for which Grand Canyon National Park and Glen Canyon National Recreation Area were established, including, but not limited to natural and cultural resources and visitor use.**



LTEMP ROD and Environmental Commitments



U.S. Department of the Interior

**Record of Decision
for the
Glen Canyon Dam Long-Term
Experimental and Management Plan
Final Environmental Impact
Statement**

December 2016

U.S. Department of the Interior

**Bureau of Reclamation
Upper Colorado Region
Salt Lake City, Utah**

**National Park Service
Intermountain Region
Lakewood, Colorado**



EXPERIENCE YOUR AMERICA

Success!



EXPERIENCE YOUR AMERICA

Thank you!



National Park Service
U.S. Department of the Interior

EXPERIENCE YOUR AMERICA