

RECLAMATION

Managing Water in the West



Operation of Flaming Gorge Dam Draft Environmental Impact Statement

The mission of the Department of the Interior is to protect and provide access to our Nation's natural and cultural heritage and honor our trust responsibilities to Indian tribes and our commitments to island communities.

The mission of the Bureau of Reclamation is to manage, develop, and protect water and related resources in an environmentally and economically sound manner in the interest of the American public.

**Front cover artwork courtesy of
Arizona Game and Fish Department**

**Operation of Flaming Gorge Dam
Colorado River Storage Project
Draft Environmental Impact Statement**

Cooperating Agencies:

U.S. Department of the Interior
Bureau of Reclamation (lead agency)
Bureau of Indian Affairs
Bureau of Land Management
National Park Service
U.S. Fish and Wildlife Service
State of Utah, Department of Natural Resources
United States Department of Agriculture, Forest Service
U.S. Department of Energy
Western Area Power Administration
Utah Associated Municipal Power Systems

Abstract:

The Secretary of the Interior, acting through the Bureau of Reclamation, proposes to take action to assist in the recovery of four endangered fish in the Green River downstream from Flaming Gorge Dam, a Colorado River Storage Project facility in northeastern Utah, with a reservoir located in Utah and Wyoming. The purpose of the proposed action is to operate Flaming Gorge Dam to protect and assist in recovery of the populations and designated critical habitat of four endangered fishes, while maintaining all authorized purposes of the Flaming Gorge Unit of the Colorado River Storage Project, particularly those related to the development of water resources in accordance with the Colorado River Compact. This draft environmental impact statement has been prepared pursuant to the National Environmental Policy Act to analyze the effects of operating Flaming Gorge Dam in accordance with a set of flow and temperature recommendations developed by the Upper Colorado River Endangered Fish Recovery Program. **The comment period for this draft environmental impact statement ends on November 15, 2004.**

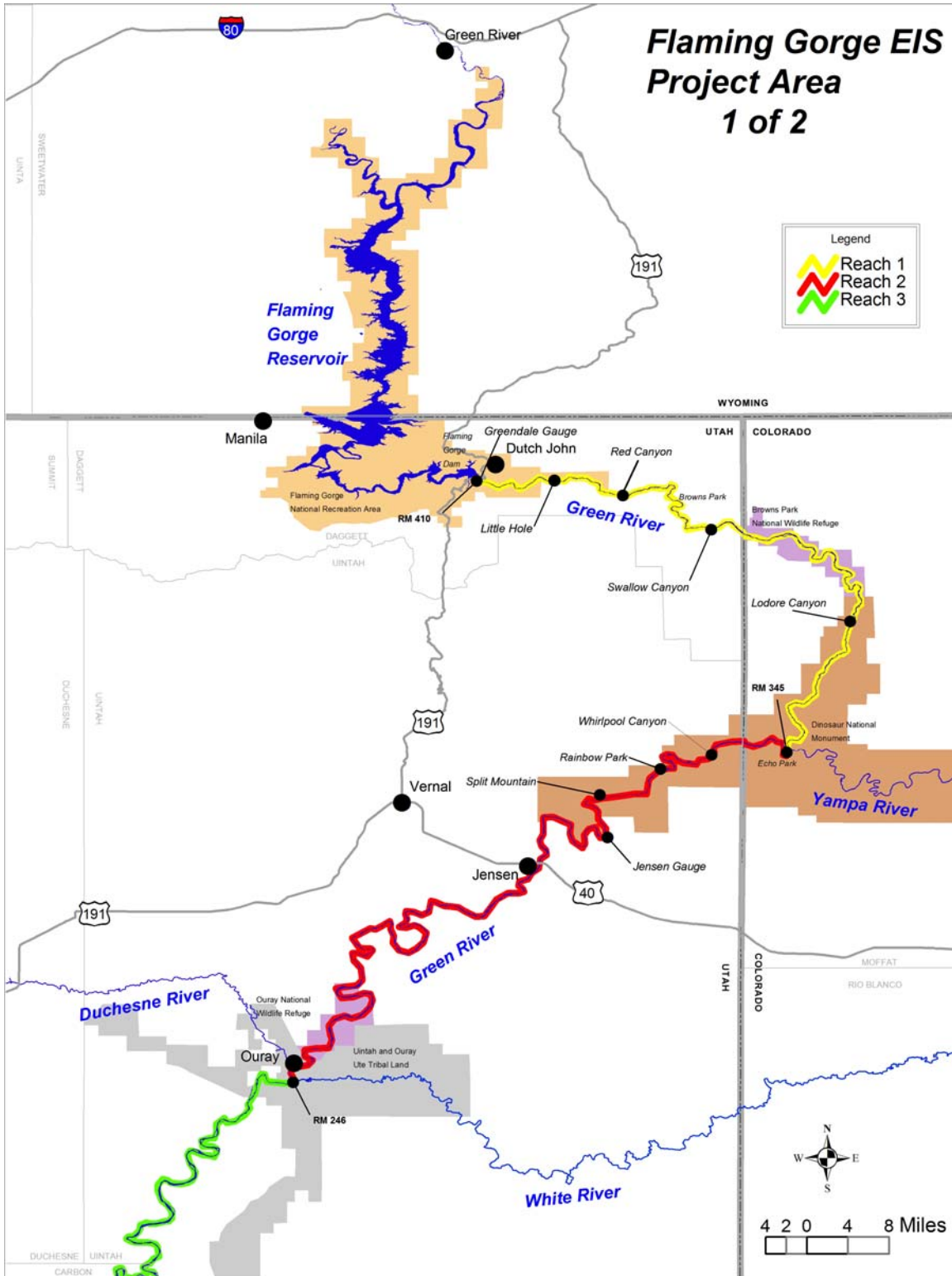
For Further Information, Contact:

Mr. Peter Crookston
Flaming Gorge EIS Manager, PRO-774
Bureau of Reclamation, Provo Area Office
302 East 1860 South
Provo, Utah 84606-7317
Telephone: (801) 379-1152
faxogram: (801) 379-1159
email: fgeis@uc.usbr.gov

DOE Tracking Number: DOE/EIS-0315

Filing Number: DES-04-40

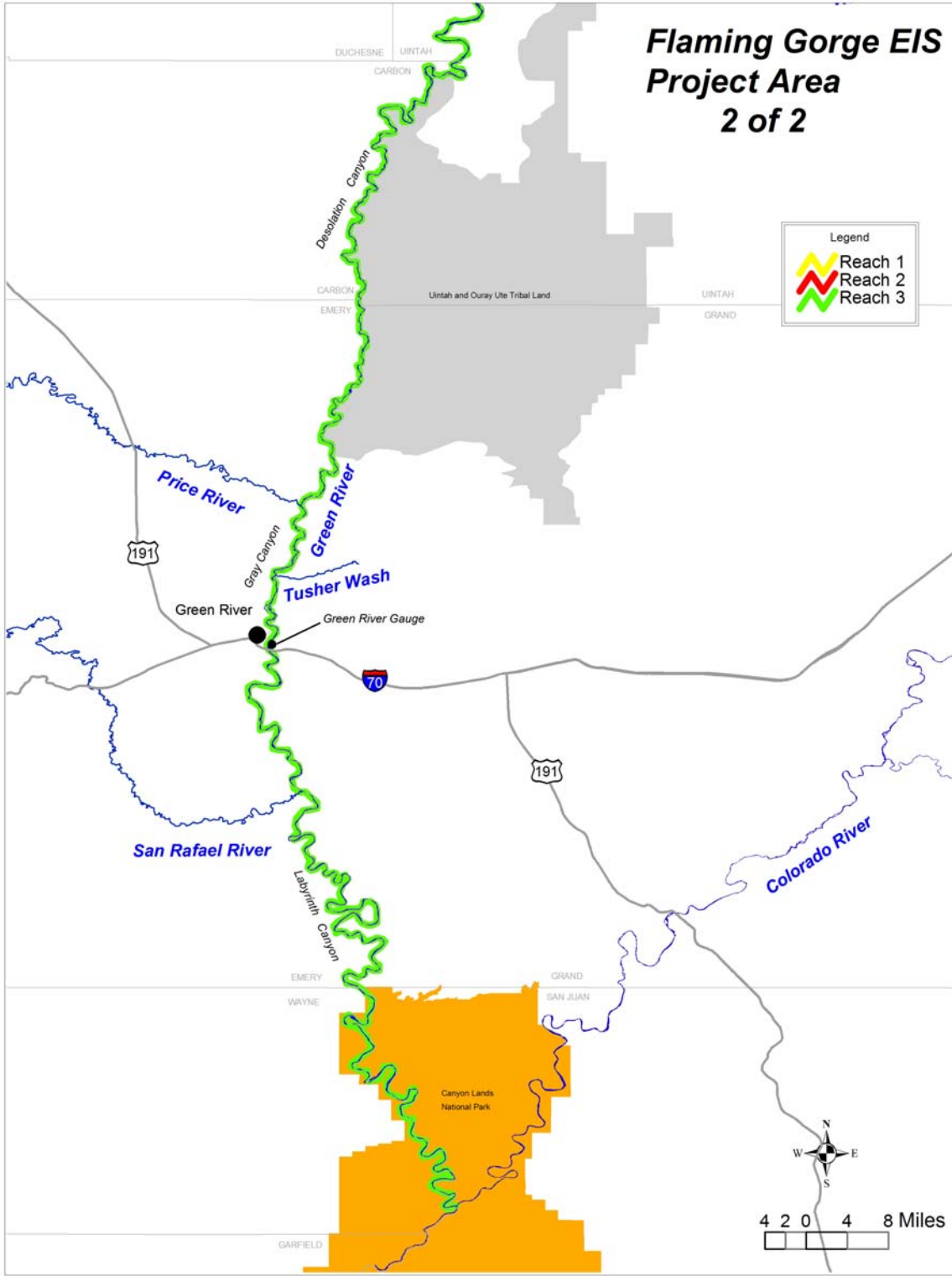
Flaming Gorge EIS Project Area 1 of 2



Flaming Gorge EIS Project Area 2 of 2

Legend

- Reach 1
- Reach 2
- Reach 3





CONTENTS

	<i>Page No.</i>
1.0 PROPOSED FEDERAL ACTION AND BACKGROUND	1
1.1 Purpose of and Need for the Proposed Federal Action.....	1
1.2 Lead and Cooperating Agencies.....	2
1.3 Contents of This Environmental Impact Statement.....	3
1.4 Background.....	3
1.4.1 Brief History of Flaming Gorge Dam and Reservoir.....	3
1.4.1.1 Authorized Uses of Flaming Gorge Dam and Reservoir: Colorado River Development.....	3
1.4.1.2 Authorized Uses of Flaming Gorge Dam and Reservoir: Flaming Gorge National Recreation Area.....	4
1.4.2 Operational Modifications Since the Beginning of Dam Operations ...	4
1.4.3 Compliance With the Endangered Species Act.....	6
1.4.4 Upper Colorado River Endangered Fish Recovery Program.....	6
1.4.5 Final Biological Opinion on the Operation of Flaming Gorge Dam and the Reasonable and Prudent Alternative.....	7
1.4.6 2000 Flow and Temperature Recommendations.....	7
1.5 Operational Decisionmaking Process at Flaming Gorge Dam.....	8
1.6 Emergency Powerplant Operations.....	9
1.6.1 Insufficient Generation Capacity.....	9
1.6.2 Transmission (Overload and Voltage Control).....	10
1.6.3 Load Shedding.....	10
1.6.4 System Restoration.....	10
1.6.5 Emergency Information Exchange.....	11
1.6.6 Special System or Control Area.....	11
1.7 Public Scoping Process for This Environmental Impact Statement.....	11
1.8 Scope of Analysis for This Environmental Impact Statement.....	12
1.8.1 Geographic Scope of Analysis for This Environmental Impact Statement.....	12
1.8.2 Public Issues and Concerns.....	12
1.8.3 Resources and Significant Issues to Be Analyzed in Detail.....	13
1.8.4 Issues Raised During Scoping Which Are Not Analyzed in Further Detail in This EIS.....	16
1.9 Related and Ongoing Actions.....	16
1.9.1 Regulatory Requirements.....	16
1.9.1.1 The Law of the River.....	16
1.9.1.2 National Parks and Recreation Areas.....	16
1.9.1.3 Environmental Compliance.....	17
1.9.1.4 Cultural Resource Laws.....	17
1.9.1.5 Native American Laws.....	17
1.9.2 Related Programs, Projects, and Activities.....	17
1.9.2.1 Recovery Program.....	17

1.9	Related and Ongoing Actions (continued)	
1.9.2	Related Programs, Projects, and Activities (continued)	
1.9.2.2	Interim Surplus Guidelines and Colorado River Basin Project Act 602(a) Storage Requirement.....	18
1.9.2.3	Relocation of Little Hole National Recreation Trail	18
1.9.2.4	Browns Park Highway Environmental Impact Statement	19
1.9.2.5	Resource Management Plans.....	19
1.9.2.6	Federal Reserve Water Rights.....	19
2.0	DESCRIPTION OF ALTERNATIVES.....	21
2.1	Introduction.....	21
2.2	Development of Alternatives	22
2.2.1	Criteria Used to Select Alternatives.....	22
2.2.2	Alternatives Considered but Eliminated From Detailed Study.....	22
2.2.2.1	Modified Run of the River Alternative.....	22
2.2.2.2	Decommissioning and Removing Flaming Gorge Dam.....	23
2.3	Description of the Alternatives Analyzed in This Environmental Impact Statement	23
2.3.1	No Action Alternative.....	23
2.3.2	Action Alternative	24
2.4	Review of Flaming Gorge Model Developed for the Flaming Gorge Dam EIS	26
2.4.1	Review Findings	27
2.5	Operational Description.....	27
2.5.1	Safe Operation of Flaming Gorge Dam.....	28
2.5.2	Reservoir Operations Process Under the No Action Alternative.....	29
2.5.2.1	Operations in May Through July (Spring Period)	29
2.5.2.2	Use of Bypass Tubes and Spillway at Flaming Gorge Dam	30
2.5.2.3	Summer and Fall Operations (Early Base Flow Period)	30
2.5.2.4	Winter Operations (Late Base Flow Period)	30
2.5.3	Reservoir Operations Process Under the Action Alternative.....	31
2.5.3.1	Operations in May Through July (Spring Period)	31
2.5.3.2	Use of Bypass Tubes and Spillway at Flaming Gorge Dam	34
2.5.3.3	Operations in August Through February (Base Flow Period)	35
2.5.3.4	Operations in March and April (Transition Period)	35
2.6	Summary Comparison of the Predicted Environmental Effects of All Alternatives	36
2.6.1	Hydrology	36
2.6.2	Water Quality, Water Temperature, and Sediment Transport	40
2.6.3	Hydropower	41
2.6.4	Agriculture.....	42
2.6.5	Land Use	42
2.6.6	Ecological Resources.....	42
2.6.6.1	Threatened and Endangered Fish	43
2.6.6.2	Other Threatened and Endangered Species.....	43
2.6.6.3	Other Special Status Species	43
2.6.7	Cultural Resources.....	43
2.6.8	Paleontological Resources	44

2.6	Summary Comparison of the Predicted Environmental Effects of All Alternatives (continued)	
2.6.9	Indian Trust Assets	44
2.6.10	Safety and Public Health.....	44
2.6.11	Air Quality	44
2.6.12	Visual Resources	44
2.6.13	Environmental Justice.....	44
2.6.14	Recreation.....	44
2.6.15	Socioeconomics/Regional Economics	44
3.0	AFFECTED ENVIRONMENT	47
3.1	Introduction.....	47
3.2	Potentially Affected Area	48
3.2.1	Description of Flaming Gorge Dam, Powerplant, and Reservoir	48
3.2.1.1	Flaming Gorge Dam and Reservoir	48
3.2.1.2	Flaming Gorge Dam River Outlet Works and Spillway	48
3.2.1.3	Flaming Gorge Powerplant.....	48
3.2.1.4	Flaming Gorge Dam Selective Withdrawal Structure	49
3.3	Water Resources and Hydrology	49
3.3.1	Flaming Gorge Reservoir Hydrology	49
3.3.2	Flaming Gorge Reservoir Water Quality and Temperature.....	49
3.3.3	Green River Hydrology	50
3.3.3.1	Reach 1	53
3.3.3.2	Reach 2.....	54
3.3.3.3	Reach 3.....	54
3.3.4	Green River Water Quality and Water Temperature	55
3.3.4.1	Reach 1	55
3.3.4.2	Reach 2.....	57
3.3.4.3	Reach 3.....	58
3.3.5	Sediment Transport and Geomorphology.....	59
3.4	Hydropower Generation and Marketing	60
3.4.1	Hydropower Operations.....	61
3.5	Agriculture.....	62
3.5.1	Census of Agriculture Data.....	63
3.5.2	Utah Agricultural Statistics.....	63
3.6	Land Status and Use	65
3.6.1	Flaming Gorge Dam and Reservoir	65
3.6.2	Green River Downstream From Flaming Gorge Dam.....	65
3.7	Ecological Resources.....	67
3.7.1	Flaming Gorge Dam and Reservoir	67
3.7.1.1	Aquatic Animals.....	67
3.7.1.2	Aquatic Food Base	68
3.7.1.3	Vegetation	68
3.7.1.4	Terrestrial and Avian Animals	68
3.7.2	Green River Downstream From Flaming Gorge Dam.....	68
3.7.2.1	Aquatic Animals Overview	68
3.7.2.2	Native Fish Species Overview.....	70
3.7.2.3	Reach 1	72
3.7.2.4	Reach 2.....	78

3.7	Ecological Resources (continued)	
3.7.2	Green River Downstream From Flaming Gorge Dam (continued)	
3.7.2.5	Reach 3	82
3.7.2.6	Vegetation	86
3.7.2.7	Terrestrial and Avian Animals	91
3.7.3	Other Threatened and Endangered Species	95
3.7.3.1	Southwestern Willow Flycatcher	95
3.7.3.2	Ute Ladies'-Tresses	96
3.7.3.3	Bald Eagle	97
3.7.3.4	Black-Footed Ferret.....	97
3.7.3.5	Canada Lynx.....	97
3.7.3.6	Mexican Spotted Owl.....	97
3.7.4	Other Special Status Species.....	98
3.7.4.1	Yellow-Billed Cuckoo.....	98
3.7.4.2	Whooping Crane.....	98
3.8	Cultural Resources.....	99
3.8.1	Definition of Affected Environment.....	99
3.8.1.1	Flaming Gorge Reservoir	100
3.8.1.2	Green River	100
3.9	Paleontological Resources	105
3.10	Indian Trust Assets	106
3.11	Recreation	107
3.11.1	Geographic Impact Area.....	107
3.11.2	Current Conditions.....	110
3.11.2.1	Current Hydrology.....	110
3.11.2.2	Current Annual Recreation Visitation	111
3.11.2.3	Current Annual Recreation Economic Value	113
3.12	Socioeconomics and Regional Economics	113
3.12.1	Geographic Impact Area.....	113
3.12.2	Current Conditions.....	115
3.13	Public Safety and Public Health	115
3.13.1	Public Safety Considerations for the Reservoir and the River Immediately Below the Dam	115
3.13.2	Public Safety Considerations for the Green River.....	117
3.13.3	Public Health: Disease Vectors.....	117
3.14	Air Quality	119
3.15	Visual Resources.....	120
3.15.1	Scenic Integrity	120
3.15.2	Constituent Information.....	120
3.15.3	Landscape Visibility	121
3.16	Environmental Justice.....	121
4.0	ENVIRONMENTAL CONSEQUENCES.....	125
4.1	Introduction.....	125
4.2	Flaming Gorge Facilities	125
4.2.1	Spillway	125
4.2.1.1	No Action Alternative	125
4.2.1.2	Action Alternative	125

4.2	Flaming Gorge Facilities (continued)	
4.2.2	Selective Withdrawal Structure	126
4.2.2.1	No Action Alternative	126
4.2.2.2	Action Alternative	126
4.3	Water Resources	126
4.3.1	Hydrology, Flaming Gorge Reservoir	126
4.3.1.1	Evaluation Methodology	127
4.3.1.2	Reservoir Average Monthly Elevations	127
4.3.1.3	Frequency of Reservoir Elevation	128
4.3.2	Hydrology, Green River	130
4.3.2.1	Evaluation Methodology for the Hydrologic Modeling	130
4.3.2.2	Reach 1– Average Monthly Flows	132
4.3.2.3	Reach 1 – Spring Peak Flows	132
4.3.2.4	Reach 2 – Average Monthly Flows	134
4.3.2.5	Reach 2 – Spring Peak Flows	135
4.3.2.6	Reach 3 – Average Monthly Flows	137
4.3.2.7	Reach 3 – Spring Peak Flows	138
4.3.3	Water Quality, Flaming Gorge Reservoir	139
4.3.3.1	No Action Alternative	139
4.3.3.2	Action Alternative	140
4.3.4	Water Quality, Green River Reach 1	141
4.3.4.1	Temperature Evaluation Methodology	141
4.3.4.2	Sediment Transport	143
4.3.5	Water Quality, Green River Reach 2	143
4.3.5.1	Water Temperature	143
4.3.5.2	Sediment Transport	144
4.3.6	Water Quality, Green River Reach 3	145
4.3.6.1	Water Temperature	145
4.3.6.2	Sediment Transport	146
4.4	Hydropower Generation	147
4.4.1	Economic Analysis Methodology	147
4.4.2	Economic Analysis Results	149
4.4.3	Financial Analysis of Power Generation	151
4.4.3.1	Description of the Customers Who Buy Electricity Generated at Flaming Gorge	151
4.4.3.2	Method for Determining the SLCA/IP Rate Impact of the Action Alternative	152
4.4.3.3	Financial Analysis Results	152
4.5	Agriculture	152
4.5.1	Introduction and Methodology	152
4.5.2	Comparison of Impacts for the No Action and Action Alternatives	153
4.6	Land Use	154
4.6.1	Flaming Gorge Reservoir and National Recreation Area	154
4.6.2	Green River Reach 1	154
4.6.3	Green River Reach 2	155
4.6.4	Green River Reach 3	155

4.7	Ecological Resources.....	156
4.7.1	Flaming Gorge Reservoir.....	156
4.7.1.1	Reservoir Fish.....	156
4.7.1.2	Aquatic Food Base	157
4.7.1.3	Vegetation	157
4.7.1.4	Terrestrial and Avian Animals	157
4.7.2	Green River Downstream From Flaming Gorge Dam – Reach 1.....	157
4.7.2.1	Aquatic Food Base	157
4.7.2.2	Threatened and Endangered Fish	158
4.7.2.3	Nonlisted Native Fish.....	161
4.7.2.4	Nonnative Fish	162
4.7.3	Green River Downstream From Flaming Gorge Dam – Reach 2.....	165
4.7.3.1	Aquatic Animals.....	165
4.7.3.2	Threatened and Endangered Fish	166
4.7.4	Green River Downstream From Flaming Gorge Dam – Reach 3.....	171
4.7.4.1	Aquatic Animals.....	171
4.7.4.2	Threatened and Endangered Fish	172
4.7.4.3	Fish – Summary of Environmental Consequences.....	176
4.7.5	Vegetation.....	176
4.7.5.1	Reach 1	177
4.7.5.2	Reach 2.....	179
4.7.5.3	Reach 3.....	180
4.7.6	Summary of Vegetation.....	180
4.7.7	Terrestrial and Avian Animals.....	181
4.7.7.1	Reach 1	181
4.7.7.2	Reach 2.....	182
4.7.7.3	Reach 3.....	183
4.7.8	Other Threatened and Endangered Species	183
4.7.8.1	Southwestern Willow Flycatcher	183
4.7.8.2	Ute Ladies’ -Tresses	184
4.7.8.3	Bald Eagle	186
4.7.8.4	Black-Footed Ferret.....	186
4.7.8.5	Lynx.....	186
4.7.8.6	Other Special Status Species	187
4.8	Cultural Resources.....	188
4.8.1	Flaming Gorge Reservoir.....	188
4.8.1.1	No Action Alternative	189
4.8.1.2	Action Alternative	189
4.8.2	Green River – Reaches 1, 2, and 3.....	189
4.8.2.1	No Action Alternative	189
4.8.2.2	Action Alternative	189
4.8.3	Summary of Effects to Cultural Resources.....	190
4.9	Paleontological Resources	191
4.9.1	No Action Alternative.....	191
4.9.2	Action Alternative	191

4.10	Indian Trust Assets	191
	4.10.1 No Action Alternative.....	191
	4.10.2 Action Alternative.....	192
4.11	Recreation	192
	4.11.1 Visitation, Recreation Infrastructure, and Economic Value Methodology.....	192
	4.11.2 Recreation Safety Methodology	195
	4.11.3 Annual Recreation Visitation and Valuation Results	195
	4.11.3.1 No Action Alternative	196
	4.11.3.2 Action Alternative	201
	4.11.4 Flaming Gorge Reservoir Recreation Safety Results	208
	4.11.5 Green River Recreation Safety Results	210
4.12	Socioeconomics and Regional Economics	210
	4.12.1 Methodology.....	213
	4.12.1.1 Regional Economics Modeling Methodology	213
	4.12.1.2 Commercial Operator Survey Methodology	215
	4.12.2 Results.....	215
	4.12.2.1 Results of Regional Economic Analysis	215
	4.12.2.2 Results of Commercial Operator Analysis	217
4.13	Public Safety and Public Health	224
	4.13.1 Public Safety on Flaming Gorge Reservoir	224
	4.13.2 Public Safety on the Green River	224
	4.13.3 Disease Vectors	225
	4.13.3.1 No Action Alternative	225
	4.13.3.2 Action Alternative	225
	4.13.4 Air Quality	226
4.14	Visual Resources.....	226
	4.14.1 Flaming Gorge Reservoir.....	226
	4.14.1.1 No Action Alternative	227
	4.14.1.2 Action Alternative	227
	4.14.2 Green River.....	227
	4.14.2.1 No Action Alternative	227
	4.14.2.2 Action Alternative	227
4.15	Environmental Justice.....	228
	4.15.1 No Action Alternative.....	228
	4.15.2 Action Alternative	228
4.16	Cumulative Impacts	229
	4.16.1 Water Resources and Hydrology	229
	4.16.1.1 Water Consumption.....	229
	4.16.1.2 Water Temperature.....	230
	4.16.1.3 Sediment Transport and Channel Morphology	231
	4.16.2 Hydropower	231
	4.16.3 Land Use.....	232
	4.16.4 Ecological Resources.....	232
	4.16.4.1 Native Fish	232
	4.16.4.2 Nonnative Fish	235
	4.16.4.3 Vegetation	236
	4.16.4.4 Terrestrial Wildlife	236
	4.16.4.5 Other Threatened and Endangered Species	237

	<i>Page No.</i>
4.16 Cumulative Impacts (continued)	
4.16.4 Ecological Resources (continued)	
4.16.4.6 Special Status Species	237
4.16.5 Cultural Resources.....	238
4.16.5.1 Flaming Gorge Reservoir	238
4.16.5.2 Reaches 1 and 2.....	238
4.16.5.3 Reach 3.....	238
4.16.6 Paleontological Resources	238
4.16.7 Indian Trust Assets	239
4.16.8 Recreation.....	239
4.16.9 Socioeconomics	239
4.16.10 Public Safety.....	240
4.16.10.1 Vectors.....	240
4.16.11 Environmental Justice.....	240
4.17 Relationship Between Short-Term Uses of the Environment and Long-Term Productivity	240
4.18 Irreversible and Irretrievable Commitments of Resources	240
4.19 Uncertainties	240
4.19.1 Hydrology	241
4.19.2 Operational Limitations for Temperature of Water Released From the Dam	242
4.19.3 Uncertainties Associated With Increased Spillway Use	242
4.19.4 Fish Responses to Flow and Temperature Modifications.....	242
4.19.5 Uncertainties Associated With Flood Plain Inundation.....	243
4.19.6 Riparian/Vegetation.....	247
4.20 Addressing Uncertainties Through Adaptive Management.....	248
4.21 Environmental Commitments	248
5.0 CONSULTATION, COORDINATION, AND PUBLIC INVOLVEMENT	251
5.1 Consultation and Coordination With Other Agencies and Organizations and Native American Tribes.....	251
5.2 Public Involvement.....	252
5.3 Distribution List	252
LIST OF PREPARERS	261
CONVERSION TABLES.....	265
GLOSSARY	267
BIBLIOGRAPHY	273

TABLES

<i>Table No.</i>	<i>Page No.</i>
2-1 Recommended Magnitudes and Duration of Maximum Spring Peak and Summer-to-Winter Base Flows and Temperatures for Endangered Fishes in the Green River Downstream From Flaming Gorge Dam as Identified in the 2000 Flow and Temperature Recommendations	25

TABLES (CONTINUED)

<i>Table No.</i>		<i>Page No.</i>
2-2	CRFSTC Recommended Forecast Errors for Flaming Gorge Dam.....	28
2-3	Upper Limit Drawdown Levels for Flaming Gorge Reservoir.....	29
2-4	Percentage Exceedances and Hydrologic Classifications.....	31
2-5	Examples of Real-Time and Other Year-Specific Information to Be Considered in Determining Annual Patterns of Releases From Flaming Gorge Dam for Implementation of the 2000 Flow and Temperature Recommendations to Benefit Endangered Fishes in Downstream Reaches From the Green River	33
2-6	Dry Hydrology Scenario.....	37
2-7	Average Hydrology Scenario.....	38
2-8	Wet Hydrology Scenario	39
2-9	Weight and Percent Increase in Sediment Load Under the Action Alternative, Above That for the No Action Alternative	41
2-10	Table of Comparisons of the Alternatives for Hydropower	42
3-1	Pre-Dam Daily Water Temperature Statistics in Degrees Celsius for the USGS Gauging Station at Greendale, Utah, Below Flaming Gorge Dam, During 1956-61	55
3-2	Daily Statistics for Predicted Flaming Gorge Release Temperatures in Degrees Celsius Based on Modeling Using CEQUAL-W2	56
3-3	Daily Statistics for Water Temperatures in Degrees Celsius at the Greendale, Utah, USGS Gauging Station Below Flaming Gorge Dam During the Period 1993-2001.....	56
3-4	Daily Statistics for Water Temperatures in Degrees Celsius at the Browns Park, U.S. Fish and Wildlife Service Measuring Station During the Period 1993-2001	57
3-5	Differences in Daily Mean Temperatures in Degrees Celsius Between the Green and Yampa Rivers as Measured at the Echo Park Gauging Stations Located in Both Rivers Above the Confluence	57
3-6	Daily Statistics for Water Temperatures at Green River, Utah, USGS Gauging Station During the Period 1993-2001.....	59
3-7	Primary Crop Acreages for Uintah County, Utah, for 1996-2000	64
3-8	Crop Yields for Uintah County, Utah, 1996-2000.....	64
3-9	Prices Received by Crop (1996-2000).....	64
3-10	Average Annual Gross Income for the Crops Grown in Uintah County.....	65
3-11	Cultural Resources Inundated by Flaming Gorge Reservoir by Prior Mitigation, Cultural Resource Site Type, Age, and NRHP Eligibility	101
3-12	Cultural Resources Immediately Above the Flaming Gorge Reservoir Pool by Prior Mitigation, Cultural Resource Site Type, Age, and NRHP Eligibility.....	103

TABLES (CONTINUED)

<i>Table No.</i>		<i>Page No.</i>
3-13	Cultural Resources Within the Reaches 1 and 2 Areas of Potential Effects by Direct or Indirect Impacts, Age, Cultural Resource Site Type, and NRHP Eligibility	103
3-14	Cultural Resources Within the Reach 3 Area of Potential Effects by Direct or Indirect Impacts, Age, Cultural Resource Site Type, and NRHP Eligibility.....	105
3-15	Current Hydrology.....	111
3-16	Current Green River and Flaming Gorge Reservoir Visitation by Month and Activity.....	112
3-17	Current Green River and Flaming Gorge Reservoir Annual Value Estimates by Activity	114
3-18	Current Conditions.....	116
3-19	Population by Race and Hispanic Origin.....	122
3-20	Poverty	124
4-1	Reach 1 Flow Objective Comparison of Action and No Action Alternatives	134
4-2	Reach 2 Flow Objective Comparison of Action and No Action Alternatives	136
4-3	Reach 3 Flow Objective Comparison of Action and No Action Alternatives	139
4-4	River Temperatures at Four Locations Downstream From Flaming Gorge Dam Under Varying Release Volumes and Release Temperatures	142
4-5	Comparison of the Annual Economic Benefits of the Flaming Gorge Powerplant Between the Action and No Action Alternatives	150
4-6	Change in SLCA/IP Electricity Price as a Result of the Action Alternative	152
4-7	Probability of Occurrence and Average Duration of Riverflows for the No Action and Action Alternatives	153
4-8	Summary of Environmental Consequences to the Riverine Fish Community (Most Common Species) of Implementing a No Action (1992 Biological Opinion Flows) or Action (2000 Flow and Temperature Recommendations [2000 FTR]) Alternative	follows page 176
4-9	Summary of Effects to Vegetation Under the No Action and Action Alternatives for Reach 1 and Reach 2.....	176
4-10	Flaming Gorge Reservoir Facility Usability Thresholds	194
4-11	Green River Facility Usability Thresholds	196
4-12	No Action Alternative, Green River Reach 1 Average Monthly Flows (in cfs) by Hydrologic Condition	198
4-13	No Action Alternative, Flaming Gorge Reservoir Average End-of-Month Water Levels (in Feet Above msl) by Hydrologic Condition	199
4-14	No Action Alternative Annual Water-Based Visitation	200
4-15	No Action Alternative Annual Valuation	202
4-16	Action Alternative Green River Reach 1 Flows (in cfs) by Hydrologic Condition and Month.....	follows page 202

TABLES (CONTINUED)

<i>Table No.</i>		<i>Page No.</i>
4-17	Action Alternative Flaming Gorge Reservoir Water Levels (in Feet Above msl) by Hydrologic Condition and Month..... follows page	204
4-18	Annual Water-Based Visitation for Green River and Flaming Gorge Reservoir for Action Alternative	204
4-19	Annual Water-Based Activity Valuation for Green River and Flaming Gorge Reservoir for Action Alternative	207
4-20	Percent of Time Flaming Gorge Reservoir Recreation Activities Are Unsafe	209
4-21	Percent of Time Green River Recreation Activities Are Unsafe	211
4-22	No Action Alternative Recreation Expenditures	216
4-23	No Action Alternative..... follows page	216
4-24	Action Alternative Recreation Expenditures	216
4-25	Action Alternative Average Condition	218
4-26	Action Alternative Wet Condition	219
4-27	Action Alternative Dry Condition	220
4-28	Green River Commercial Operator Hydrology Comparisons	222
4-29	Flaming Gorge Reservoir Commercial Operator Hydrology Comparisons	222
4-30	Comparisons of the Alternatives and a Cumulative Impact Simulation.....	232
4-31	Cumulative Impacts on Native Fish.....	233

FIGURES

<i>Figure No.</i>		<i>Page No.</i>
3-1	Figures 3-1 and 3-2 depict the magnitude of algal blooms at Flaming Gorge in 1975 and in 1992 during years with minimal summer drawdown.....	51
3-2	See above.....	52
3-3	Green River Historic Flows at Greendale, Utah, Located 0.25 Mile Downstream From Flaming Gorge Dam.....	53
3-4	2002 Hourly Temperature Variations From Flaming Gorge Dam to the Yampa River Confluence.....	58
4-1	Average End-of-Month Flaming Gorge Reservoir Elevations	128
4-2	February Reservoir Elevation Distribution Plot	129
4-3	June Reservoir Elevation Distribution Plot	129
4-4	Reach 1 Average Monthly Flows	133
4-5	Reach 1, 1-Day Peak Flow Distribution	133
4-6	Reach 2 Average Monthly Flows	135
4-7	Reach 2, 1-Day Average Peak Flow Distribution.....	136
4-8	Reach 3 Average Monthly Flows	137
4-9	Reach 3, 1-Day Average Peak Flow Distribution.....	138

FIGURES (CONTINUED)

<i>Figure No.</i>		<i>Page No.</i>
4-10	Reservoir Elevation Comparison for the End of September.....	140
4-11	Average Monthly Total Load Sediment Transport in Reach 1	144
4-12	Average Monthly Sand Load Transport in Reach 2	146
4-13	Average Monthly Sand Load Transport in Reach 3	148
4-14	Thermal Units Accumulated in Upper Lodore Canyon (46 Miles Below Flaming Gorge Dam) Under Various Hydrologic Scenarios.....	160
4-15	Thermal Units Accumulated in Upper Lodore Canyon (46 Miles Below Flaming Gorge Dam) Under Various Hydrologic Scenarios.....	244
4-16	Cumulative Area of Priority Depression Flood Plain Inundated at 13,000 cfs and 18,600 cfs and Proportion of Larvae Entering River Mile According to Distance Downstream From the Razorback Spawning Bar.....	246