

Yakima River Basin Water Enhancement Project Workgroup Technical Update

Webex Meeting
March 10, 2021



Presented by:

Dave Brown, City of Yakima

Wendy Christensen, Bureau of Reclamation

Clint Wertz, Bureau of Reclamation



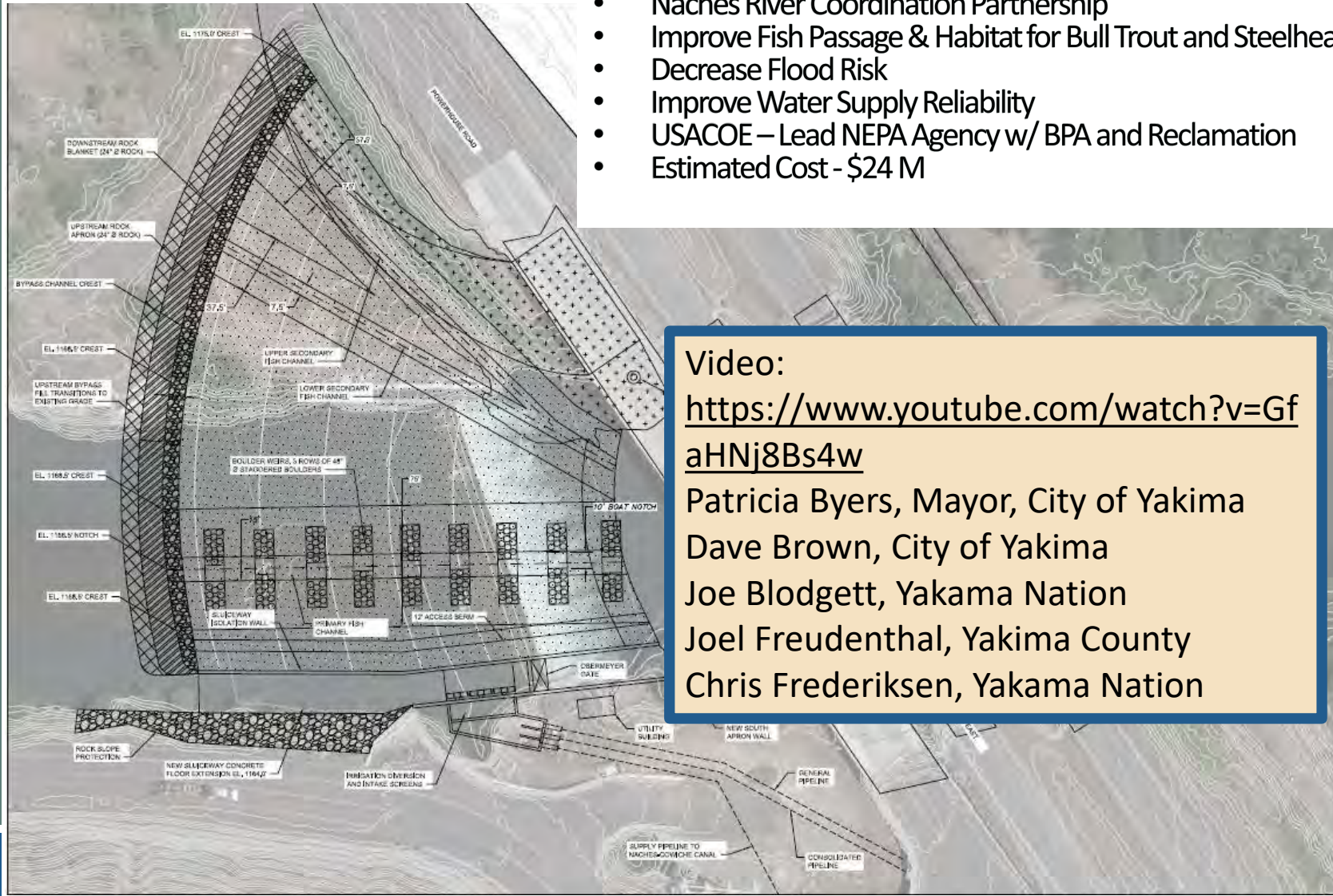
— BUREAU OF —
RECLAMATION



DEPARTMENT OF
ECOLOGY
State of Washington

Nelson Dam Removal and River Restoration – New Video, Dave Brown

- Naches River Coordination Partnership
- Improve Fish Passage & Habitat for Bull Trout and Steelhead
- Decrease Flood Risk
- Improve Water Supply Reliability
- USACOE – Lead NEPA Agency w/ BPA and Reclamation
- Estimated Cost - \$24 M



Video:

<https://www.youtube.com/watch?v=GfaHNj8Bs4w>

Patricia Byers, Mayor, City of Yakima

Dave Brown, City of Yakima

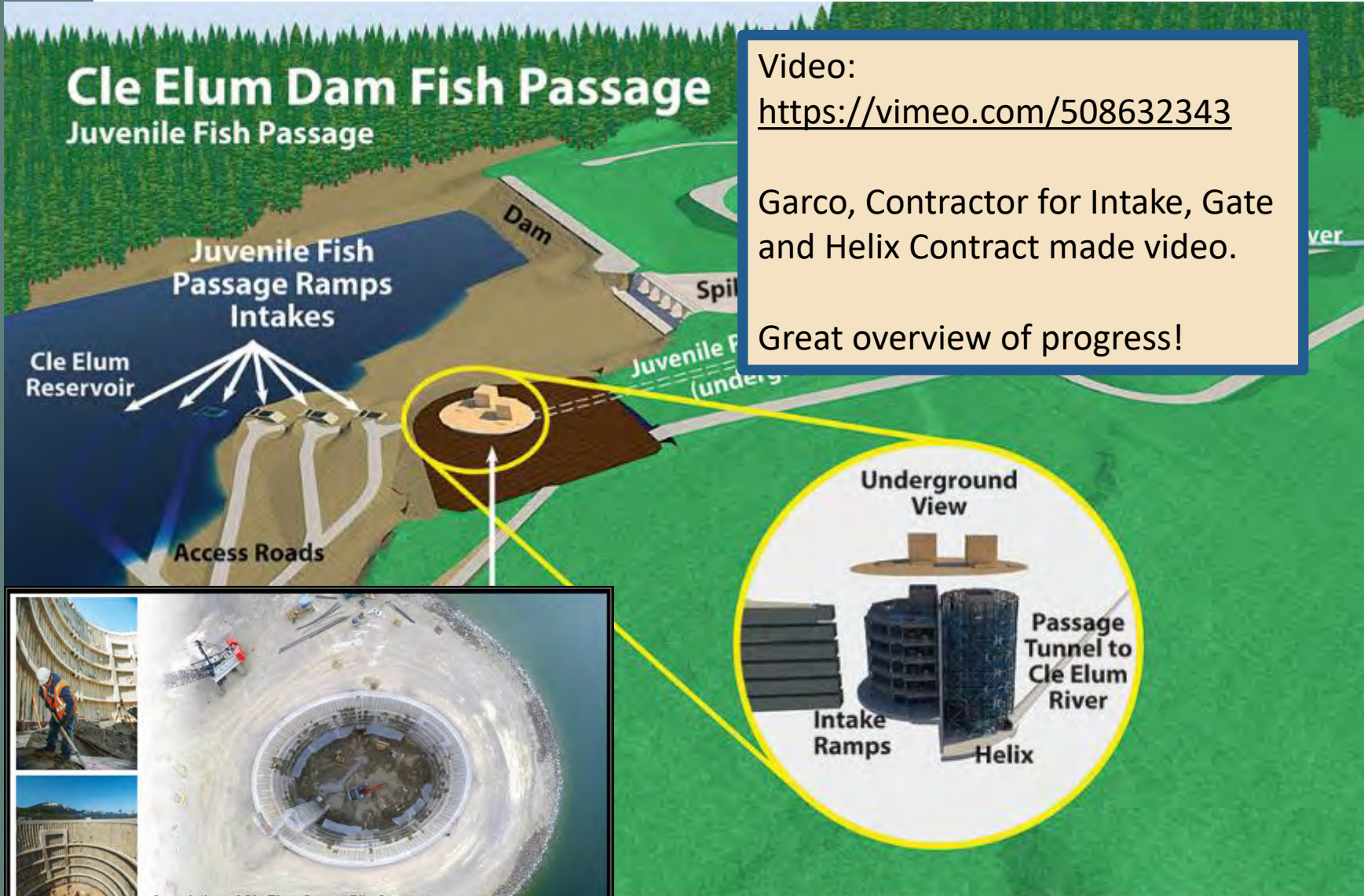
Joe Blodgett, Yakama Nation

Joel Freudenthal, Yakima County

Chris Frederiksen, Yakama Nation

Cle Elum Dam Fish Passage

Cle Elum Dam Fish Passage Juvenile Fish Passage

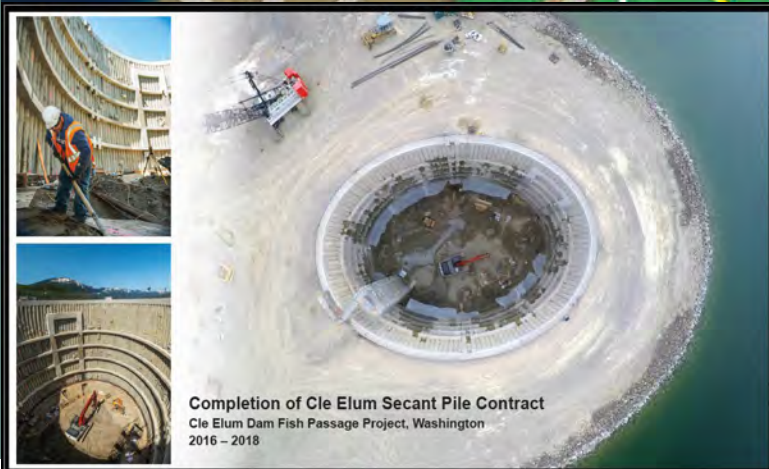


Video:

<https://vimeo.com/508632343>

Garco, Contractor for Intake, Gate and Helix Contract made video.

Great overview of progress!



BUREAU OF RECLAMATION



DEPARTMENT OF ECOLOGY
State of Washington





Cle Elum Pool Raise

Video:

<https://youtu.be/9G3-CqBMQsE>

Educate partners and public on Cle Elum Pool Raise project.

Dave Empel, Reclamation (Producer)

Phil Rigdon, Yakama Nation

Perry Harvester, WDFW

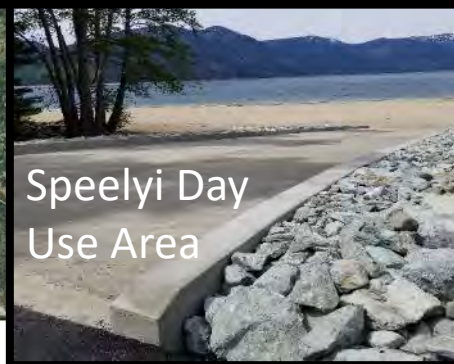
Raechel Chandler, Ecology

Wendy Christensen, Reclamation

Radial Gates



Speelyi Day Use Area



Cle Elum River Campground



BUREAU OF
RECLAMATION



DEPARTMENT OF
ECOLOGY
State of Washington

Clear Creek Dam Fish Passage Status Update



Clear Creek Dam repairs circa 1965



— BUREAU OF —
RECLAMATION



DEPARTMENT OF
ECOLOGY
State of Washington

Clear Creek Dam Fish Passage

Problem/Needs Statement

- **The existing fish ladder near the spillway does not function for fish passage as planned.**
- **A new fish ladder near the dam structure is being designed to provide fish passage and address both failures of the old ladder while meeting state and federal criteria.**
- **Goal is to construct the right type of structure to pass Bull Trout, salmon, steelhead and resident fish species.**

Clear Creek Dam Fish Passage

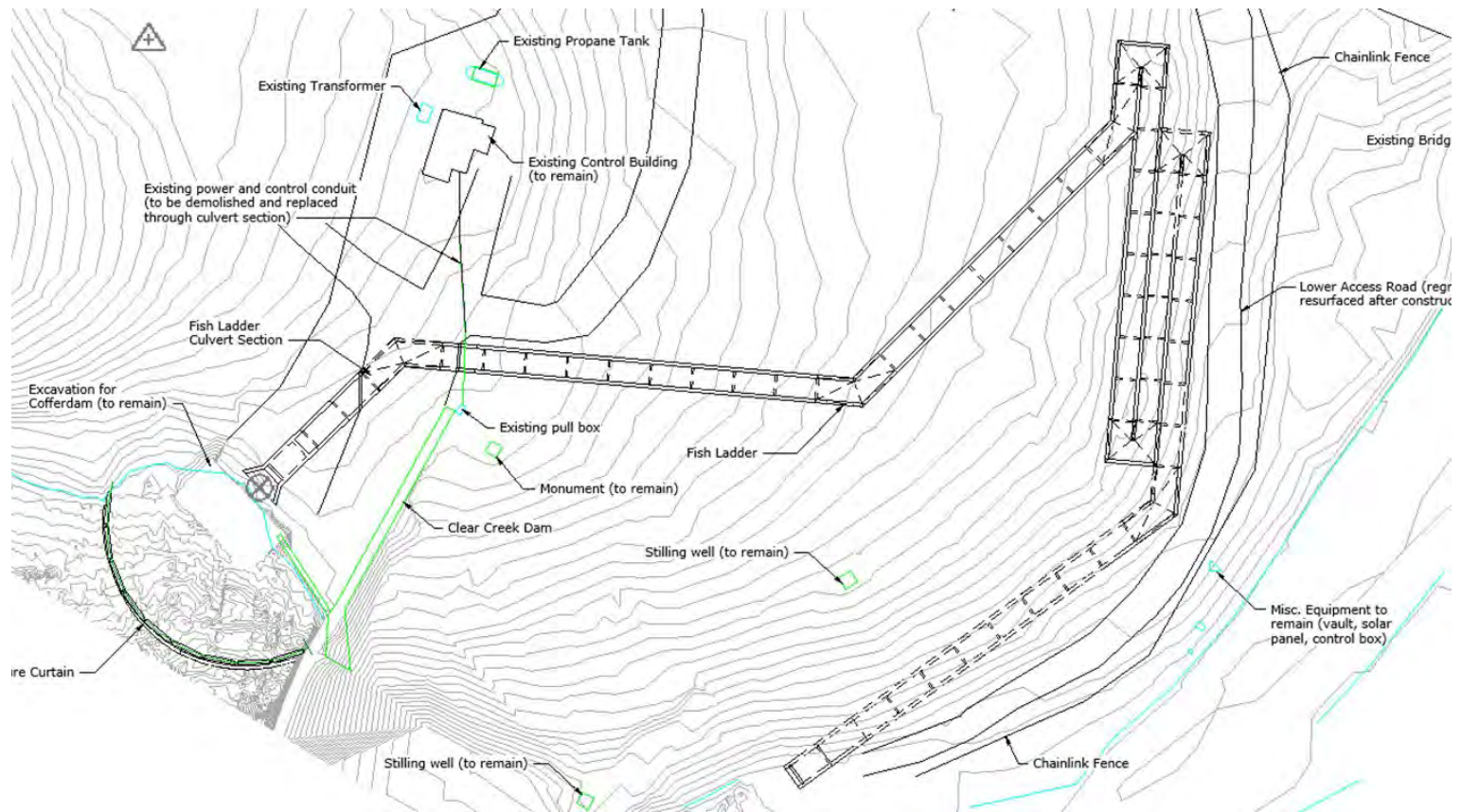


Current Status

- **May 29, 2020 – Kick off Meeting with Storage Dam Fish Passage Core Team**
- **November 3, 2020 - 30% Design Complete**
- **January 21, 2021 - Partners meeting on 30% Design**
- **February 8-12, 2021 - Value Engineering Study**
- **April 16, 2021 - 60% Design Due**
- **November 5, 2021 - 90% Design Due**
- **FY 2023-2024 - Anticipated Construction Period**

Clear Creek Dam Fish Passage

30% Design Overview Drawing



BUREAU OF
RECLAMATION



DEPARTMENT OF
ECOLOGY
State of Washington

Clear Creek Dam Fish Passage

Clear Creek Value Engineering Study

February 8-12, 2021

Proposals Analyzed

1. Use spillway & existing ladder for fish passage
2. Construct fishway bypass channel
3. Install a public access and fish viewing site
4. Automate dam gates for pool regulation
5. Insert drains holes for O&M purposes
6. Provide auxiliary water system to ladder to ensure cold water
7. Construct weirs without addition of adjustable steel blades
8. Alternative fish ladder coverings

Appreciate participation from partners!



— BUREAU OF —
RECLAMATION



DEPARTMENT OF
ECOLOGY
State of Washington

Clear Creek Dam Fish Passage

Clear Creek Value Engineering Study Process

Next steps

- Reclamation will review Final Value Engineering Report
- Adopt appropriate Value Engineering Study proposals
- Adjust design as needed to incorporate into 60% design



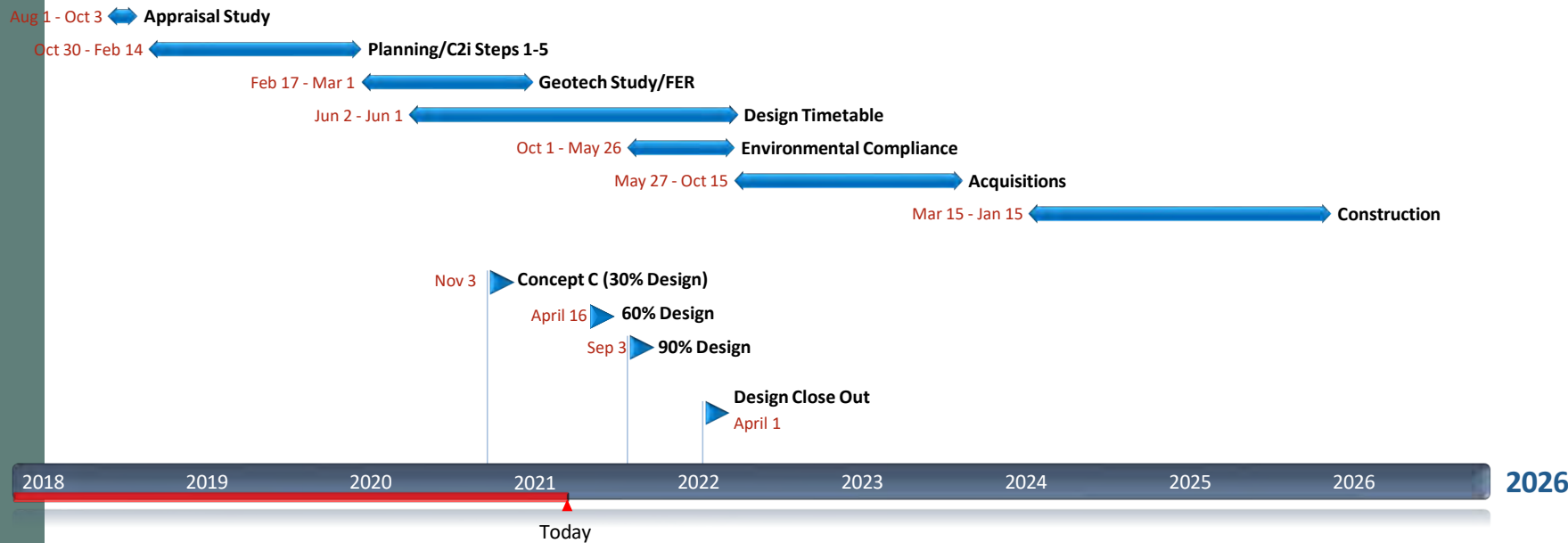
— BUREAU OF —
RECLAMATION



DEPARTMENT OF
ECOLOGY
State of Washington

Clear Creek Dam Fish Passage

Milestone Schedule



Questions?



Spillway for Clear Creek Dam
Existing ladder location

