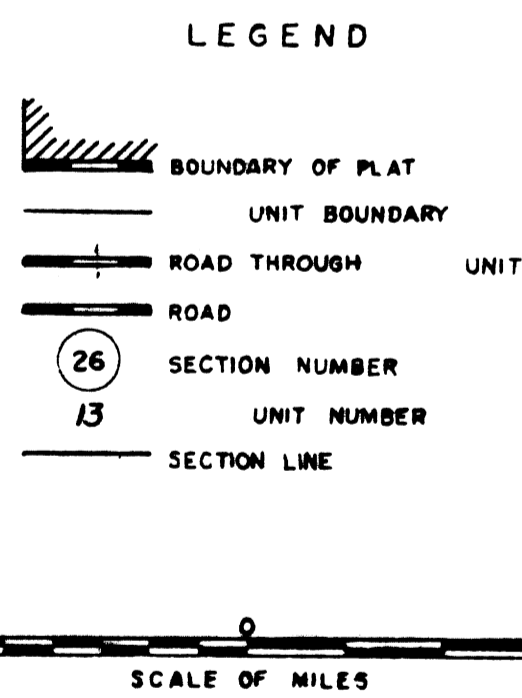
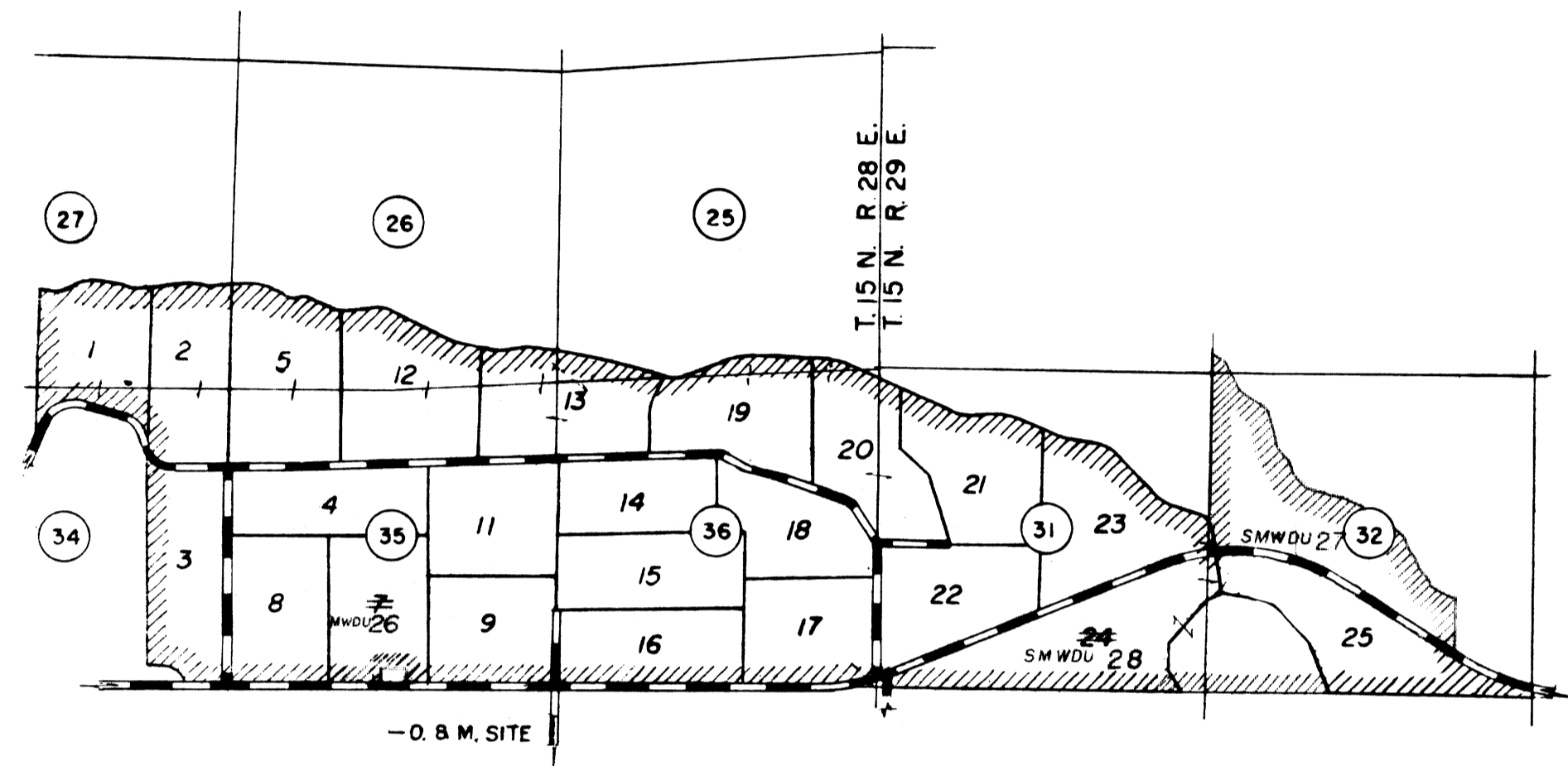


COLUMBIA BASIN PROJECT - IRRIGATION BLOCK 48
ADAMS COUNTY, WASHINGTON



THIS SHEET NOT RECORDED

INDEX	DWG. NO.	UNIT	GROSS ACRES	IRRIGABLE AREA (ACRES)				TOTAL	NON-IRRIGABLE		
				LAND CLASS					CLASS 6 1/2	R/W	HIGH 3
				1	2	3	4				
4	1	83.8	75.4				75.4			8.4	
4	2	88.8	83.2				83.2			5.6	
4	3	106.5	88.0	11.6			99.6			6.9	
4	4	90.5	85.2				85.2			5.3	
4	5	112.3	103.9				103.9			7.2	1.2
4	6	Number Not Used									
4	7	Cancelled, See WD Unit 26									
4	8	90.9	82.5				82.5			7.4	
4	9	87.7	81.5				81.5			6.2	
4	10	Number Not Used									
4	11	90.1	87.1				87.1			3.0	
4	12	113.3	100.6				100.6			9.9	2.8
5	13	112.4	94.4	4.3			98.7			13.0	0.7
5	14	78.0	64.8	4.4			69.2			4.5	4.3
5	15	91.2	87.4	2.8			90.2			1.0	
5	16	91.1	82.2				82.2			8.9	
5	17	90.7	72.7				72.7			15.4	2.6
5	18	86.7	71.4				71.4			14.3	1.0
5	19	94.8	84.5				84.5			6.3	4.0
5	20	98.1	90.7	0.6			91.3	3.3		3.5	
6	21	98.3	83.0	5.7			88.7	3.4		3.4	2.2
6	22	104.7	80.1	16.6			96.7			6.9	1.1
6	23	116.2	104.9	0.1			105.0			10.6	0.6
6	24	141.2	56.9	68.6			125.5			11.2	4.5
6	25	110.2	45.8	39.2			85.0	9.6		14.7	0.9
4	WDU 26	90.1	85.6				85.6			4.5	
6	SMW DU 27	146.5			31.9		31.9	105.4		9.2	
TOTAL		2414.1	1847.6	160.5	71.1		2079.2	121.7	167.3	25.9	

- 1/ Tentative classifications made under the provisions of the Federal Reclamation Laws.
- 2/ Lands in class 6 are regarded as nonirrigable.
- 3/ Land designated as high is land which, although arable, is classified as nonirrigable because of higher elevation or location with respect to the turnout and measuring device provided for delivery of water from the project irrigation system.

NOTE: As of the date of this plat, the acreage for the Units shown hereon are tentative and subject to change. These acreages may be modified by additions or deletions. A final irrigable area determination for the Block will be made prior to the end of the development period for the Block for the purposes of water service and project construction repayment.

REV. TO 9-30-73	H.M.P.
REV. TO 7-31-70	C.M.
REV. TO 7-31-69	C.M.
REV. TO 7-31-68	C.M.
REV. TO 10-12-67	C.M.
REV. TO 7-31-67	C.M.
REV. TO 7-29-66	C.M.
REV. TO 9-1-65	Jerry