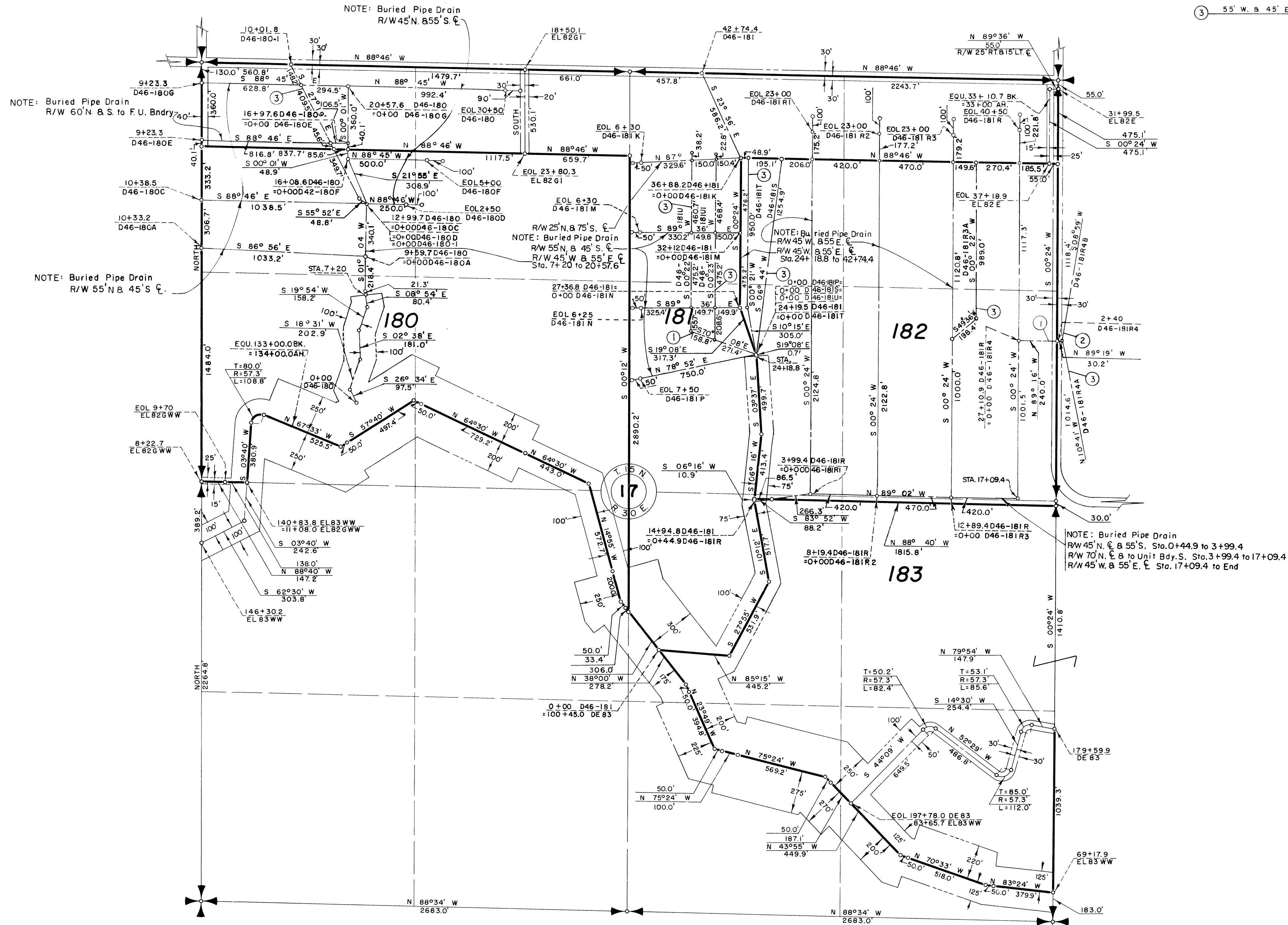


NOTE: Buried Pipe Drain R/W

- ① 45' N. & 55' S.
- ② 45' W. & 55' E.
- ③ 55' W. & 45' E.



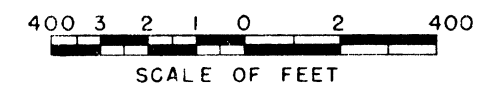
27

25

Drawn H.M.R.
 Checked E.R.P.
 Surveys certified
J.D. Humes
 Chief, D.B.C. Div.

DATE 6-29-59

- LEGEND
- Boundaries of Units
 - - - Rights of Way for Roads
 - - - Rights of Way for Canals
 - - - Rights of Way for Drains



183 Unit Number

REV. TO 12-31-85	dc
REV. TO 12-31-84	dc
REV. TO 11-3-76	dc
REV. TO 7-31-70	CM
REV. TO 9-1-65	Blm

I certify that this is Sheet
 8 of 9 Supplemental Sheets
 of the Third Revision
 of the Final Farm Unit Plat
 of Irrigation Block 46.

W.G. Draper
 Regional Director (ACT)
 DATE 7-27-59