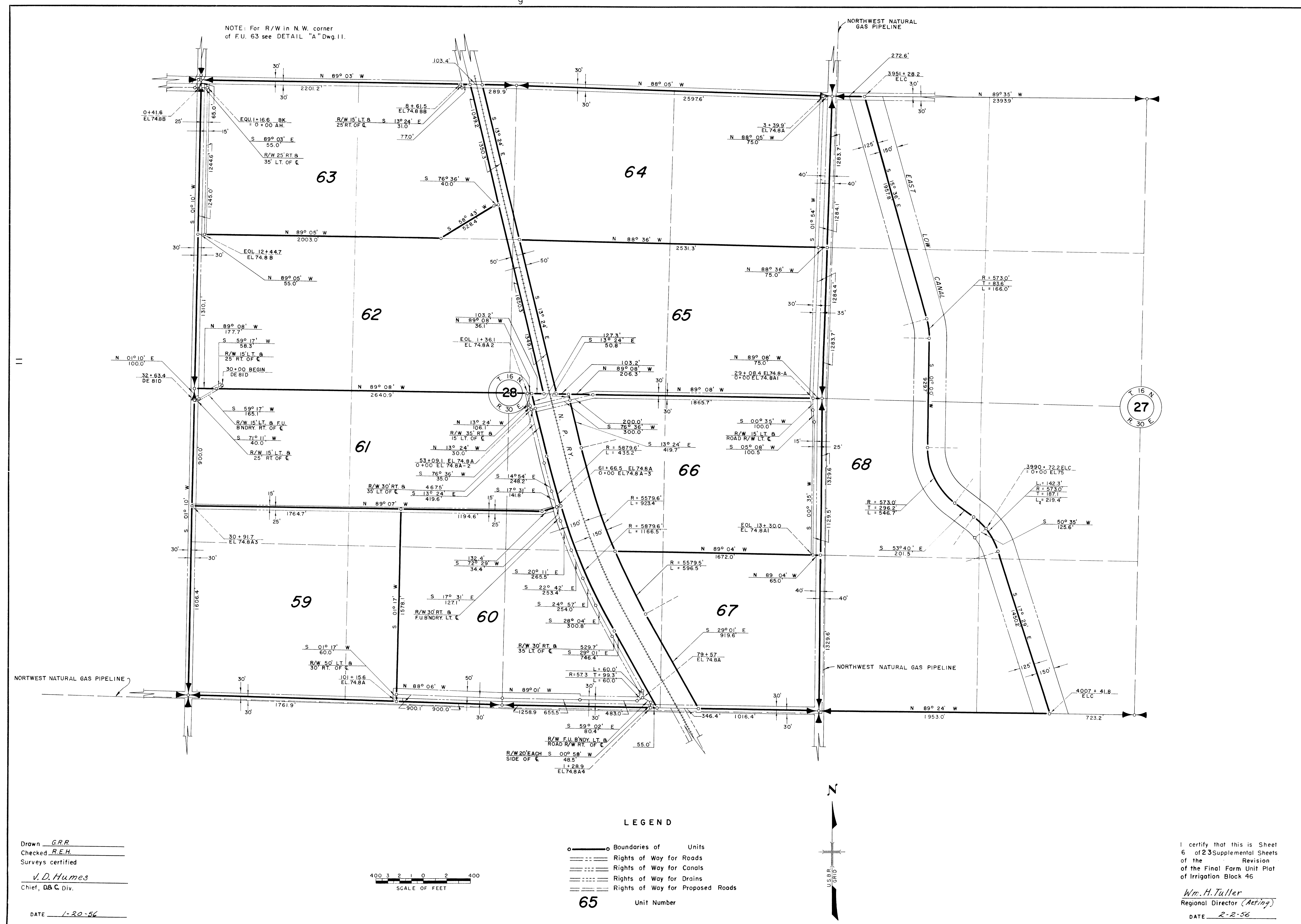
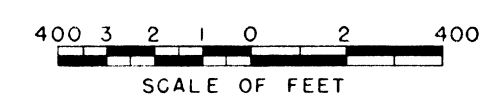


NOTE: For R/W in N.W. corner of F.U. 63 see DETAIL "A" Dwg. 11.



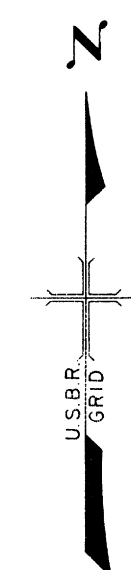
Drawn G.R.R.  
 Checked R.E.H.  
 Surveys certified  
V.D. Humes  
 Chief, D.C. Div.  
 DATE 1-20-56



LEGEND

- Boundaries of Units
- Rights of Way for Roads
- Rights of Way for Canals
- Rights of Way for Drains
- Rights of Way for Proposed Roads

65 Unit Number



I certify that this is Sheet  
 6 of 23 Supplemental Sheets  
 of the Revision  
 of the Final Farm Unit Plat  
 of Irrigation Block 46  
Wm. H. Tuller  
 Regional Director (Acting)  
 DATE 2-2-56