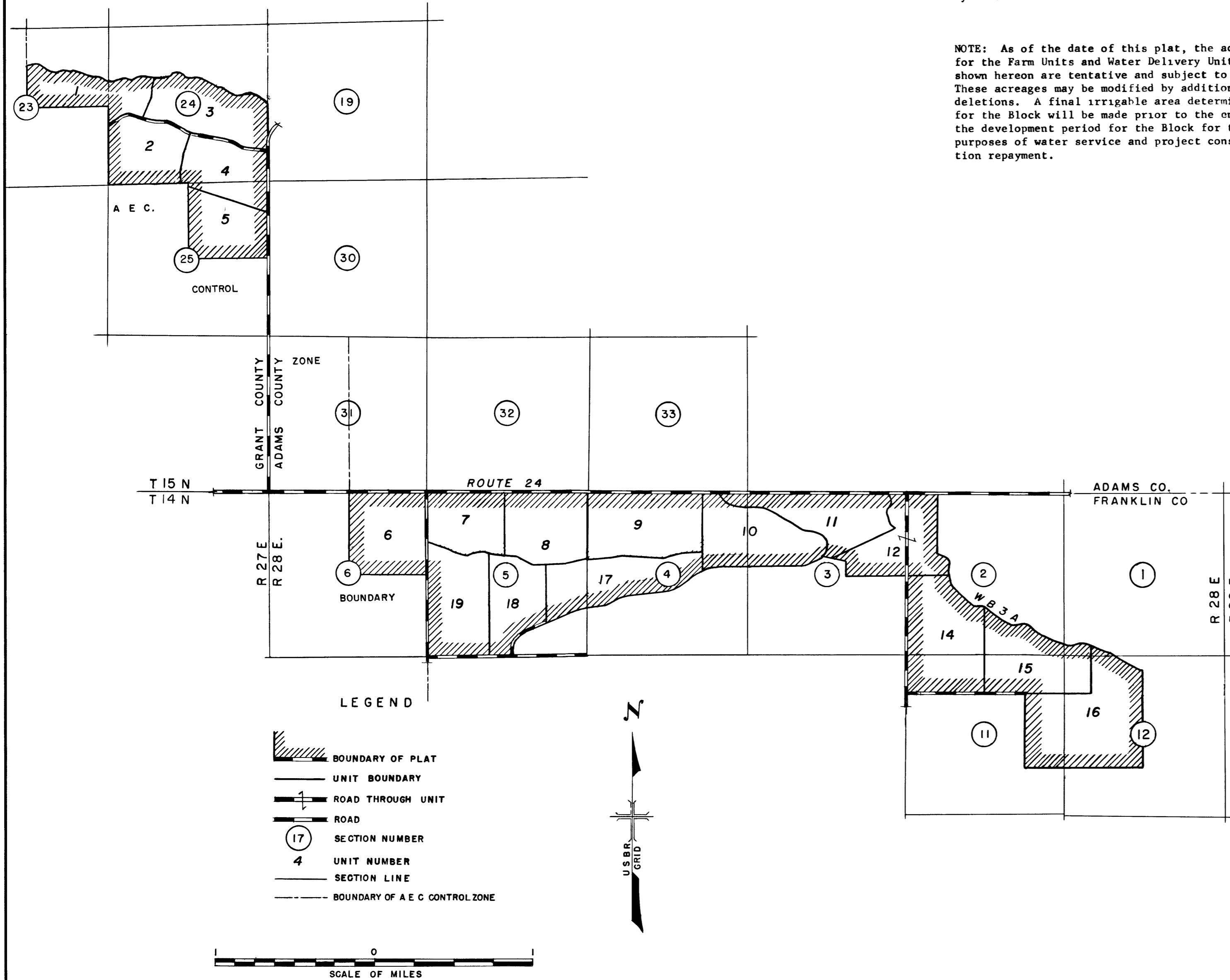


COLUMBIA BASIN PROJECT - IRRIGATION BLOCK 36

GRANT & FRANKLIN COUNTIES — WASHINGTON



- 1/ Tentative classifications made under the provisions of the Federal Reclamation Laws.
- 2/ Lands in class 6 are regarded as nonirrigable.
- 3/ Land designated as high is land which, although arable, is classified as nonirrigable because of higher elevation or location with respect to the turnout and measuring device provided for delivery of water from the project irrigation system.

NOTE: As of the date of this plat, the acreage for the Farm Units and Water Delivery Units shown hereon are tentative and subject to change. These acreages may be modified by additions or deletions. A final irrigable area determination for the Block will be made prior to the end of the development period for the Block for the purposes of water service and project construction repayment.

DWG NO	WATER DELIVERY UNITS	GROSS ACRES	IRRIGABLE AREA (ACRES)					NON-IRRIGABLE			CLASS 1 EQUIV
			TENTATIVE LAND CLASS					6	R/W	3/ HIGH	
			1	2	3	4	TOTAL				
GRANT COUNTY											
3	1	113.2		25.9	37.1	13.8	76.8	23.9	12.5		48.5
3	2	125.4	10.8	79.1	2.1	11.2	103.2	2.1	19.6	0.5	79.8
3	3	159.9		78.9	43.6		122.5	17.0	20.4		89.3
3	4	130.1	8.0	81.9	15.1		105.0	6.3	18.8		82.6
3	5	120.6	78.9	16.4	12.3		107.6	0.8	12.2		99.4
COUNTY TOTAL		649.2	97.7	282.2	110.2	25.0	515.1	50.1	83.5	0.5	
FRANKLIN COUNTY											
4	6	192.4	11.9	13.8	7.5	26.7	59.9	83.8	10.6	38.1	38.1
4	7	129.6	18.0	36.7	23.4	8.4	86.5	31.5	11.6		64.8
5	9	196.4	37.0	60.2	42.1	11.7	151.0	35.7	9.7		115.1
	13		Number Not Used								
7	14	236.2		12.5	54.9	93.2	160.6	65.9	7.6	2.1	80.2
7	15	175.3		74.8	26.3	38.2	139.3	26.1	5.9	4.0	90.9
8	16	275.5	12.5	86.2	10.0	54.0	162.7	108.9	2.7	1.2	109.1
5	17	179.2		23.0	50.8	48.1	121.9	35.6	21.7		68.1
4	18	129.6		21.7	34.6	35.4	91.7	25.9	12.0		52.3
4	19	173.9			68.7	68.8	137.5	15.0	7.1	14.3	68.7
	FARM UNITS										
4	8	148.1	38.6	39.4	19.6	18.6	116.2	25.6	6.3		89.3
5	10	193.1		82.4	33.7	6.0	122.1	35.2	34.8	1.0	88.5
6	11	151.4	11.3	88.9	27.2		127.4	0.8	23.2		98.7
6	12	149.9	51.1	45.0	15.0	16.7	127.8	3.7	15.2	3.2	102.8
COUNTY TOTAL		2330.6	180.4	584.6	413.8	425.8	1604.6	493.7	168.4	63.9	
GRAND TOTAL		2979.8	278.1	866.8	524.0	450.8	2119.7	543.8	251.9	64.4	