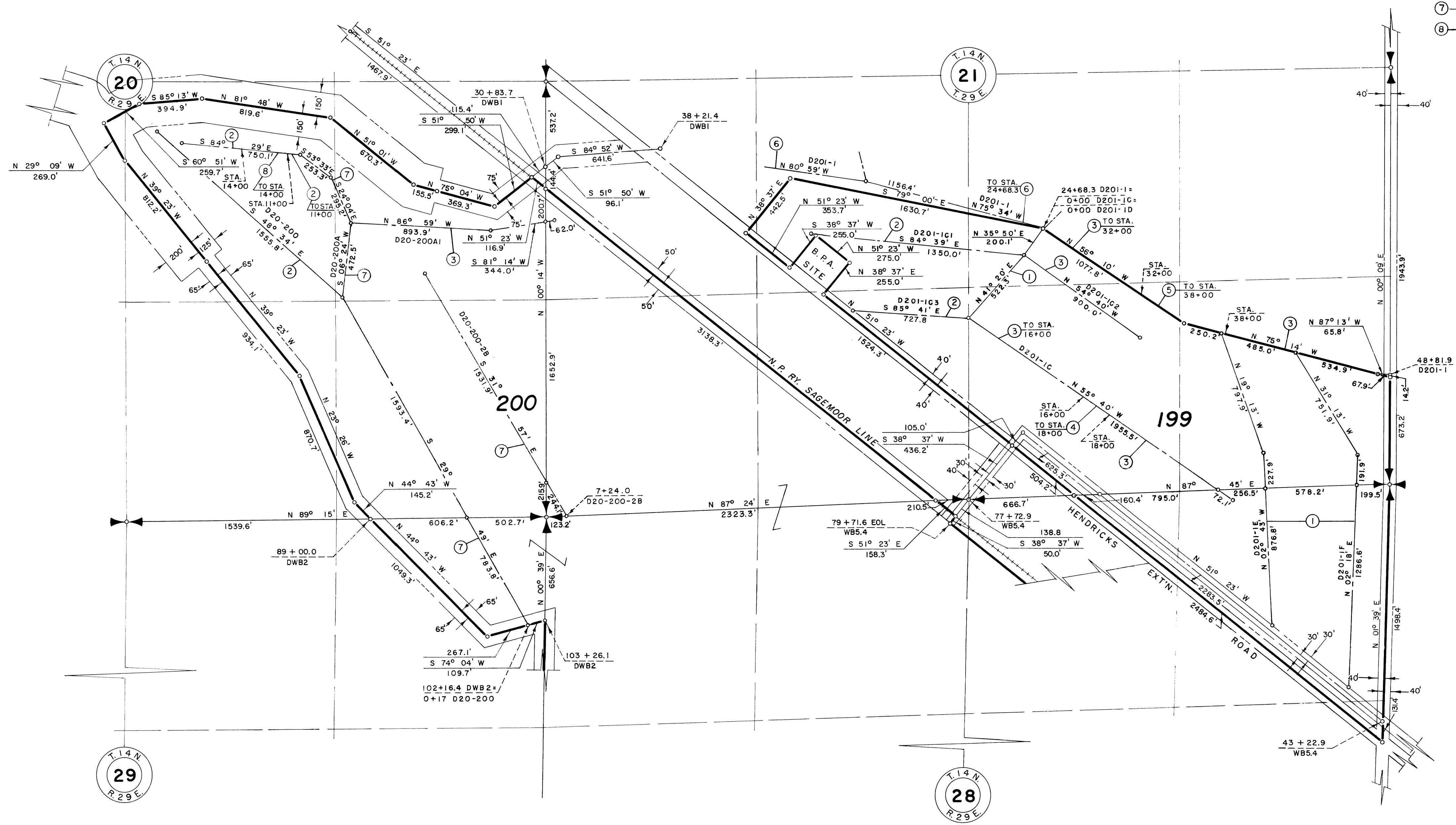


NOTE: Buried Pipe Drain R/W

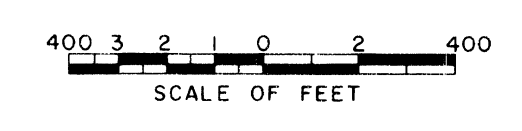
- ① 45' W. & 55' E.
- ② 45' N. & 55' S.
- ③ 55' N. & 45' S.
- ④ 65' N. & 55' S.
- ⑤ 75' N. & 75' S.
- ⑥ 100' N. & 100' S.
- ⑦ 55' W. & 45' E.
- ⑧ 55' N. & 65' S.



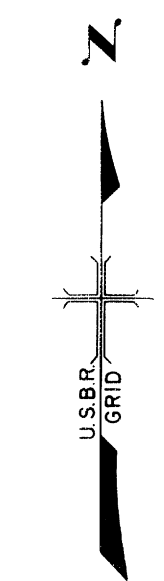
201-10

201-4

Drawn O.K.O.
 Checked J.L.R.
 Surveys certified
A.J. Davidson
 Chief, Engr. Div. (Act.)
 DATE 9-15-59



- LEGEND
- ———○ Boundaries of Units
 - ==== Rights of Way for Roads
 - Rights of Way for Canals
 - Rights of Way for Drains
 - Rights of Way for Proposed Roads
- 187** Unit Number



REV. TO 11-17-82	<u>ds</u>
REV. TO 11-5-81	<u>ds</u>
REV. TO 7-31-67	<u>C.M.</u>

I certify that this is Sheet
 1 of 21 Supplemental Sheets
 of the Second Revision
 of the Final Farm Unit Plot
 of Irrigation Block 20.
M. J. Martz
 Regional Director (Act.)
 DATE 9-18-59

222-116-31422-5