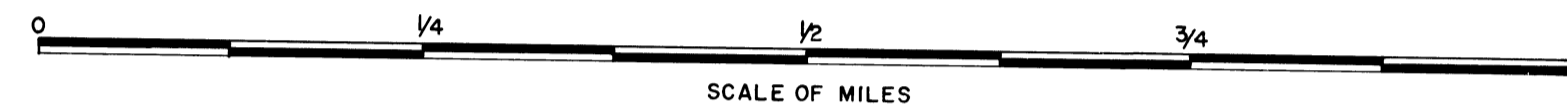


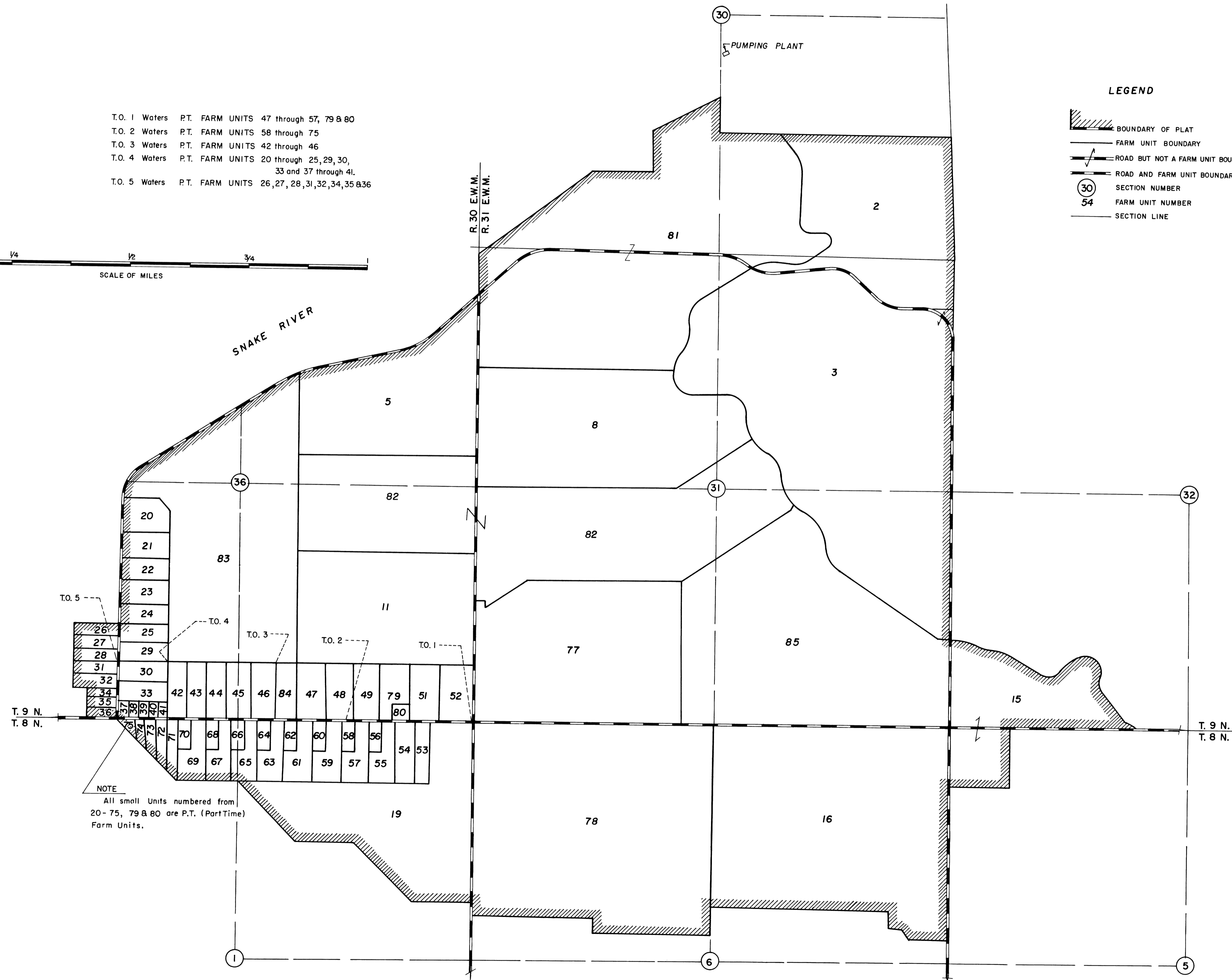
COLUMBIA BASIN PROJECT - IRRIGATION BLOCK 2
WALLA WALLA COUNTY, WASHINGTON

T.O. 1 Waters	P.T. FARM UNITS 47 through 57, 79 & 80
T.O. 2 Waters	P.T. FARM UNITS 58 through 75
T.O. 3 Waters	P.T. FARM UNITS 42 through 46
T.O. 4 Waters	P.T. FARM UNITS 20 through 25, 29, 30, 33 and 37 through 41.
T.O. 5 Waters	P.T. FARM UNITS 26, 27, 28, 31, 32, 34, 35 & 36



LEGEND

- BOUNDARY OF PLAT
- FARM UNIT BOUNDARY
- ROAD BUT NOT A FARM UNIT BOUNDARY
- ROAD AND FARM UNIT BOUNDARY
- SECTION NUMBER
- FARM UNIT NUMBER
- SECTION LINE



NOTE
 All small Units numbered from
 20 - 75, 79 & 80 are P.T. (PartTime)
 Farm Units.

Drawn H. E. M.
 Checked R. E. W.

A. J. Davidson
 Chief, Engr. Div.

DATE 11-8-61

I certify that this is Sheet
 1 of 2 General Map Sheets of
 the Fifth Revision of the
 Final Farm Unit Plat for
 Irrigation Block 2 showing
 the farm unit boundaries and
 a tabulation of the acreages
 by land classes in each farm
 unit.

M. B. Austin
 Regional Director (Act.)
 DATE 11-30-61