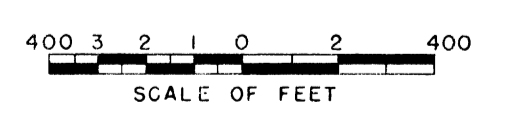
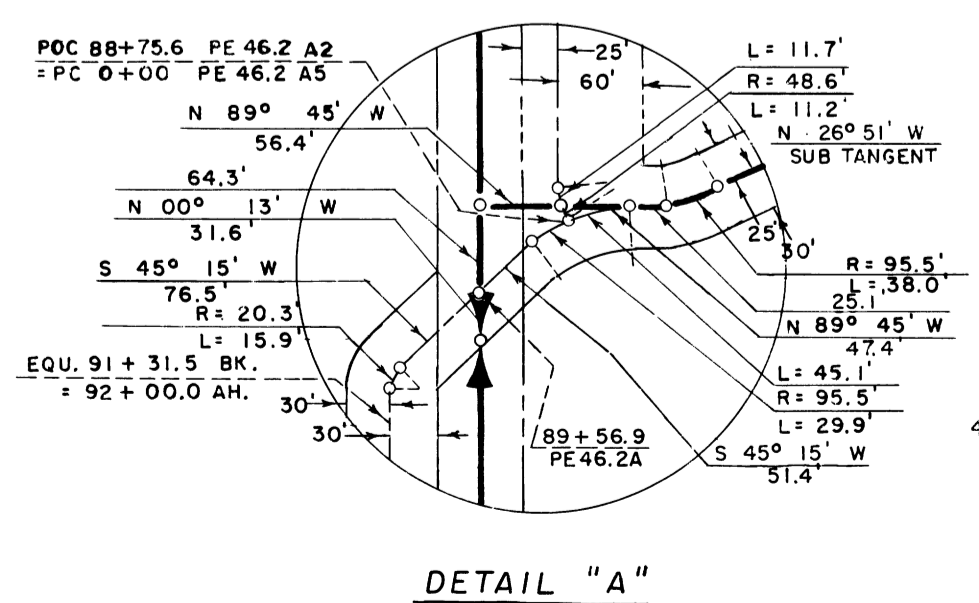
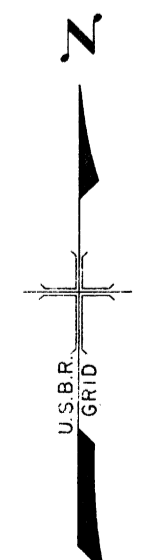


Drawn L.E.M.  
 Checked E.S.M.  
 Surveys certified  
J.D. Humes  
 Chief, Eng. Div. of D.C. Div.

DATE 7-17-59



- LEGEND**
- Boundaries of Units
  - Rights of Way for Roads
  - Rights of Way for Canals
  - Rights of Way for Drains
  - Rights of Way for Proposed Roads
- III Unit Number



- NOTE: Buried Pipe Drain R/W
- ① 45' N. & 55' S.
  - ② 55' W. & 45' E.
  - ③ 25' N. & 75' S.
  - ④ 75' W. & 25' E.

REV. TO 7-7-77	dc
REV. TO 7-29-46	cm
REV. TO 9-1-65	Jim

I certify that this is Sheet 11 of 14 Supplemental Sheets of the Fourth Revision of the Final Farm Unit Plat of Irrigation Block 19.

W.G. Draper  
 Regional Director (Act.)

DATE 7-31-59

REV. TO 12-30-94 dc