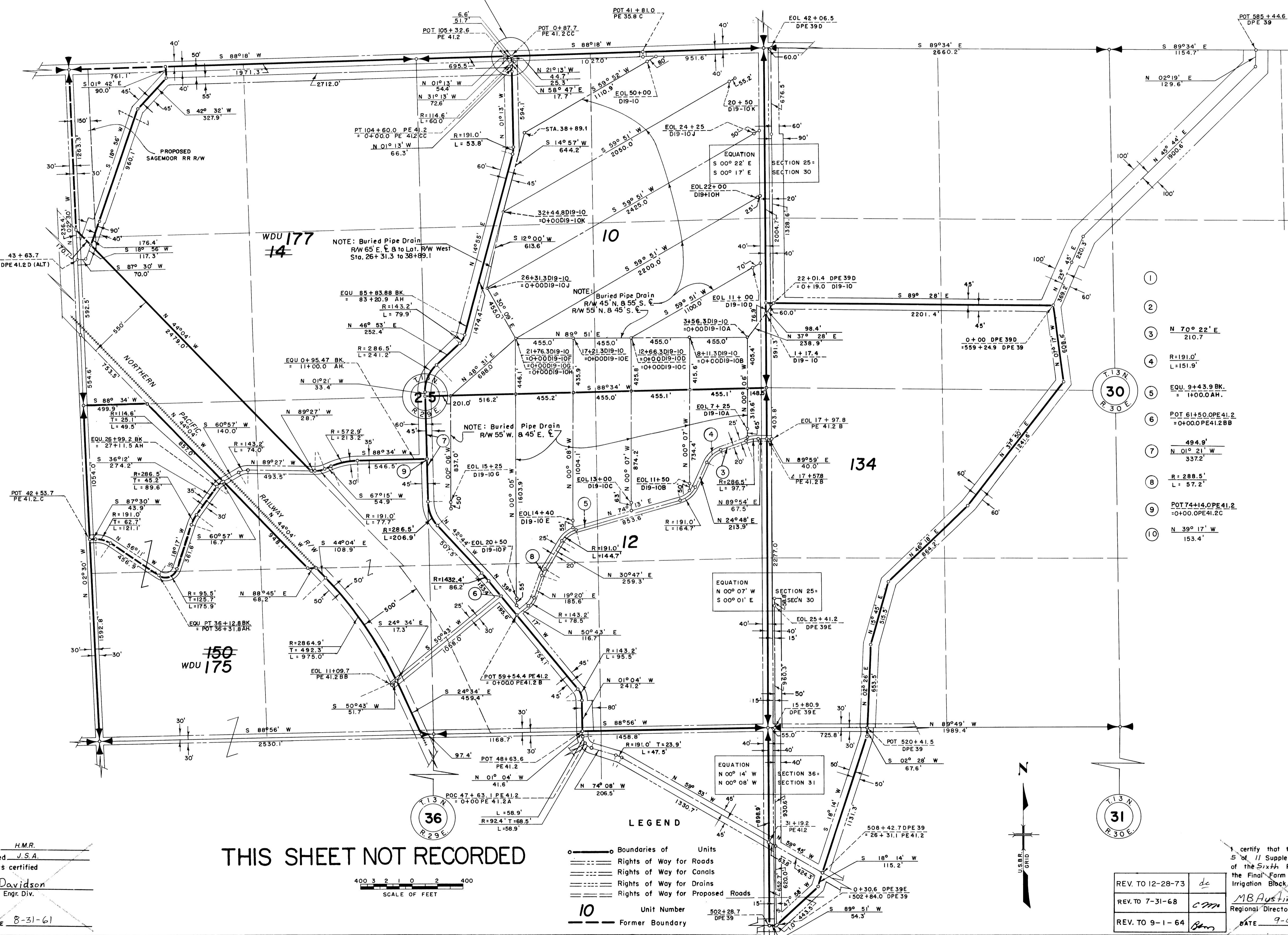


See DETAIL "A"  
DWG. 5



WDU 177  
14

WDU 175

134

LEGEND

- — ○ Boundaries of Units
  - — — Rights of Way for Roads
  - — — Rights of Way for Canals
  - — — Rights of Way for Drains
  - — — Rights of Way for Proposed Roads
- 10 Unit Number  
Former Boundary

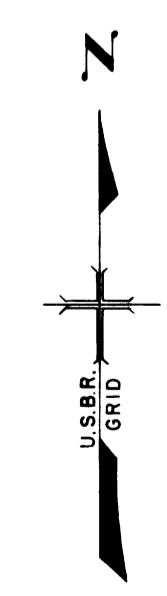
- 1
- 2
- 3 N 70° 22' E  
210.7
- 4 R=191.0'  
L=151.9'
- 5 EQU 9+43.9 BK.  
= 0+00.0 AH.
- 6 POT 61+50.0 PE 41.2  
= 0+00.0 PE 41.2 BB
- 7 494.9'  
N 01° 21' W  
337.2'
- 8 R=288.5'  
L=57.2'
- 9 POT 74+14.0 PE 41.2  
= 0+00.0 PE 41.2 C
- 10 N 39° 17' W  
153.4'

T. 13 N  
R. 30 E

T. 13 N  
R. 30 E

Drawn H.M.R.  
Checked J.S.A.  
Surveys certified  
A.J. Davidson  
Chief, Engr. Div.  
DATE 8-31-61

THIS SHEET NOT RECORDED



REV. TO 12-28-73	de
REV. TO 7-31-68	cm
REV. TO 9-1-64	cm

I certify that this is Sheet  
5 of 11 Supplemental Sheets  
of the Sixth Revision of  
the Final Farm Unit Plat of  
Irrigation Block 19.  
MB Austin  
Regional Director (Act)  
DATE 9-6-61

222-116-32162-9