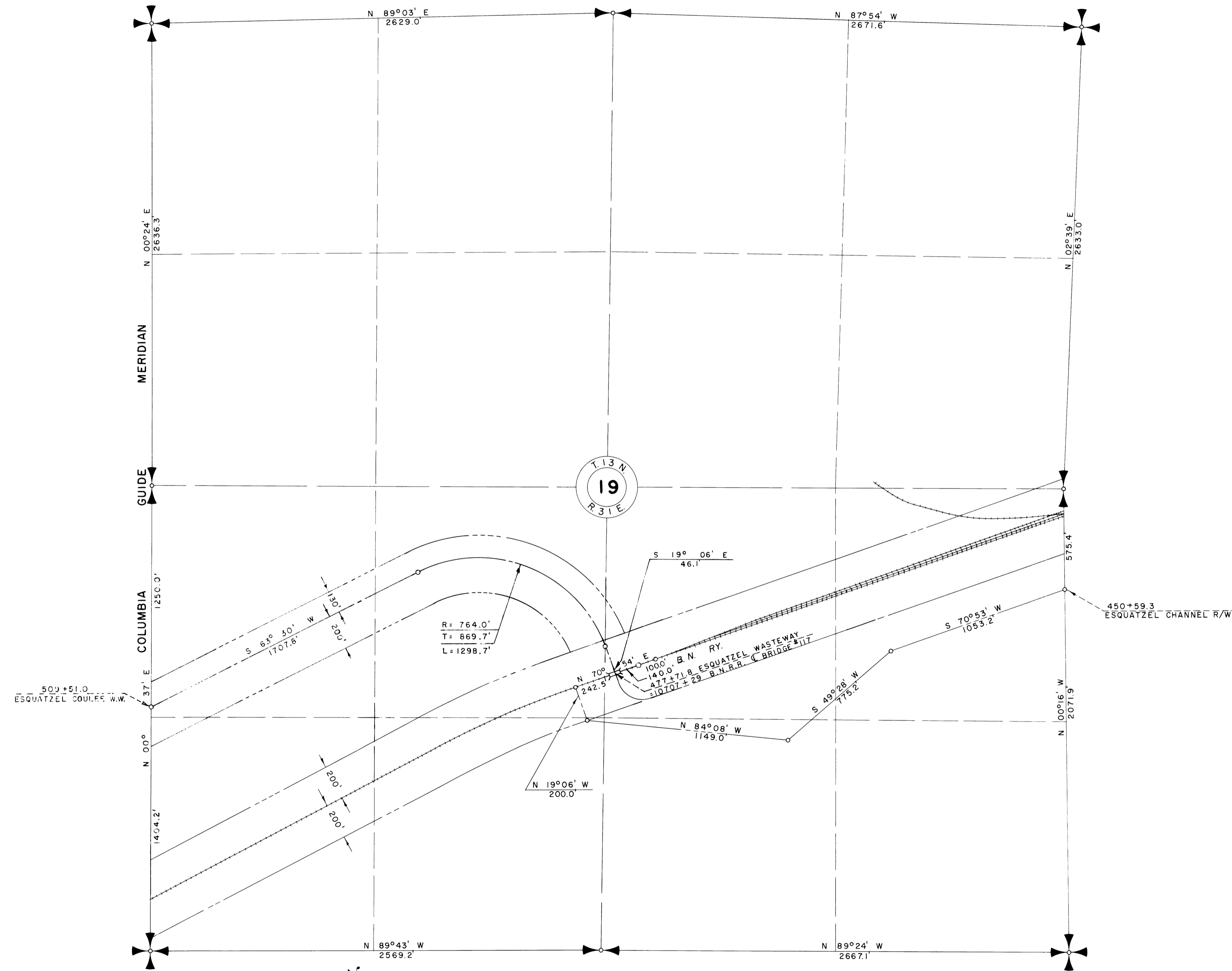
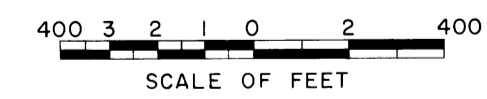


46 & 40



LEGEND

- ==== Rights of Way for Roads
- ==== Rights of Way for Canals
- ==== Rights of Way for Drains
- ==== Rights of Way for Proposed Roads



Drawn H.M.R.  
 Checked E.S.M.  
 Surveys certified

J.D. Humes  
 Chief, Eng. Div. of D. & C. Div.

DATE 8-7-58

REV. TO 6-27-79 dc

NOTE: This drawing supersedes and replaces Drawing No. 45 attached to and filed with Farm Unit Plat of Irrigation Block 18 as recorded in Franklin County on

Wm. H. Tuller  
 Regional Director (Act.)

DATE 8-11-58

222-116-30766-45