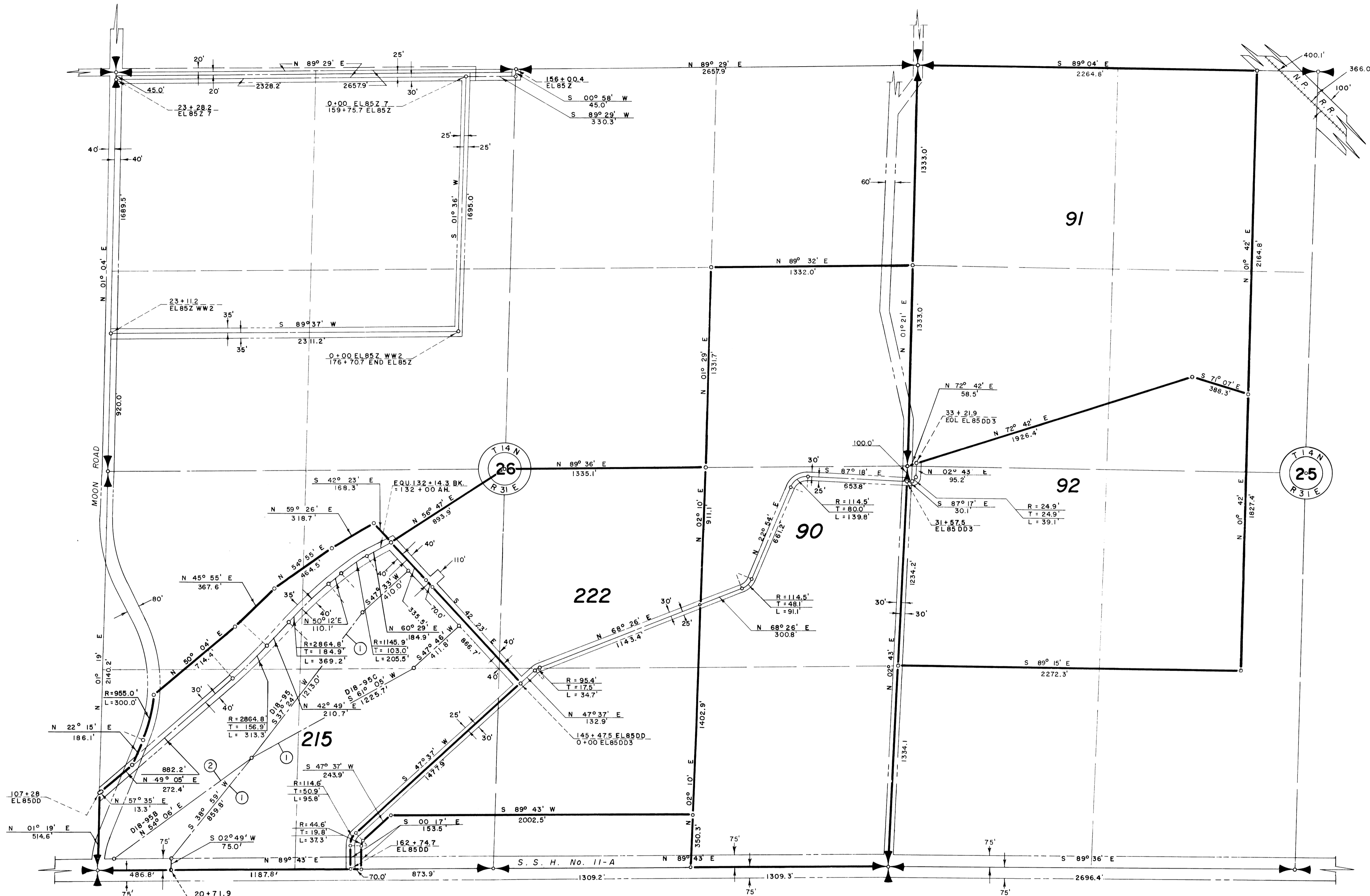


36



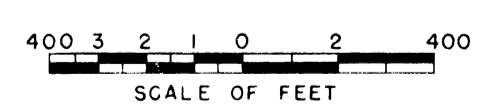
NOTE: Buried Pipe Drain R/W

- ① 55' W. & 45' E.
- ② 45' W. & 55' E.

LEGEND

- Boundaries of Farm Units
- Rights of Way for Roads
- ==== Rights of Way for Canals
- Rights of Way for Drains
- Rights of Way for Proposed Roads

90 Farm Unit Number



Drawn G.R.R.  
 Checked ESM  
 Surveys certified  
A.J. Davidson  
 Chief, Engr. Div.

DATE 8-2-61

REV. TO 12-31-65 *dc*

I certify that this is Sheet  
 7 of 9 Supplemental Sheets  
 of the *Fifth* Revision  
 of the Final Farm Unit Plat  
 of Irrigation Block 18

M.B. Austin  
 Regional Director (Act.)  
 DATE 8-16-61