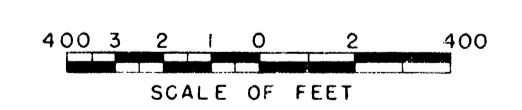


- ① BURIED PIPE DRAIN
R/W 55' N. & 45' S. E.
- ② BURIED PIPE DRAIN
R/W 45' N. & 55' S. E.
- ③ BURIED PIPE DRAIN
R/W 45' W. & 55' E. E.
- ④ BURIED PIPE DRAIN
R/W 55' W. & 45' E. E.
- ⑤ BURIED PIPE DRAIN
R/W 70' W. E. & TO RD. R/W E. TO STA. 6+15.2
R/W 45' W. & 55' E. E. STA. 6+15.2 TO END.
- ⑥ BURIED PIPE DRAIN
R/W 75' W. & 65' E. E.

NOTE: Buried Pipe Drain
RW for D18-169 55' W. E.
Sta. 27+63.9 to 54+04.1
RW 85' N. & 55' S. E. Sta. 54+04.1 to 61+78.2
RW 80' N. & 55' S. E. Sta. 61+78.2 to 70+12.6
RW 75' N. & 55' S. E. Sta. 70+12.6 to 80+59.5
RW 70' W. E. & to Road r/w E. Sta. 80+59.5 to 86+74.6
RW 45' W. & 55' E. E. Sta. 86+74.6 to 104+48.7
RW 65' E. & 30' W. E. Sta. 104+28 to 108+63.0
RW 55' N. & 45' S. E. Sta. 108+63.0 to End.

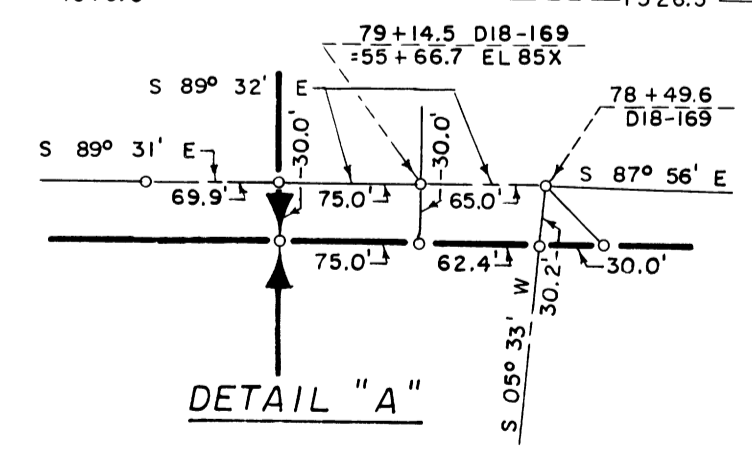
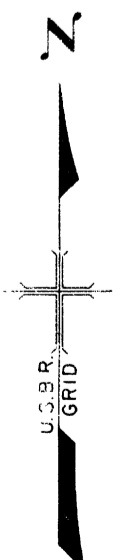
Drawn F.E.H.
Checked R.E.H.
Surveys certified
A.J. Davidson
Chief, Engr. Div.
DATE 7-11-60

THIS SHEET NOT RECORDED



- LEGEND
- Boundaries of Units
 - Rights of Way for Roads
 - Rights of Way for Canals
 - Rights of Way for Drains

76 Unit Number



REV. TO 12-31-85	de
REV. TO 12-24-68	C.M.

I certify that this is Sheet
7 of 9 Supplemental Sheets
of the Fourth Revision
of the Final Farm Unit Plat
of Irrigation Block 18.
M.B. Austin
Regional Director (Act.)
DATE 7-20-60