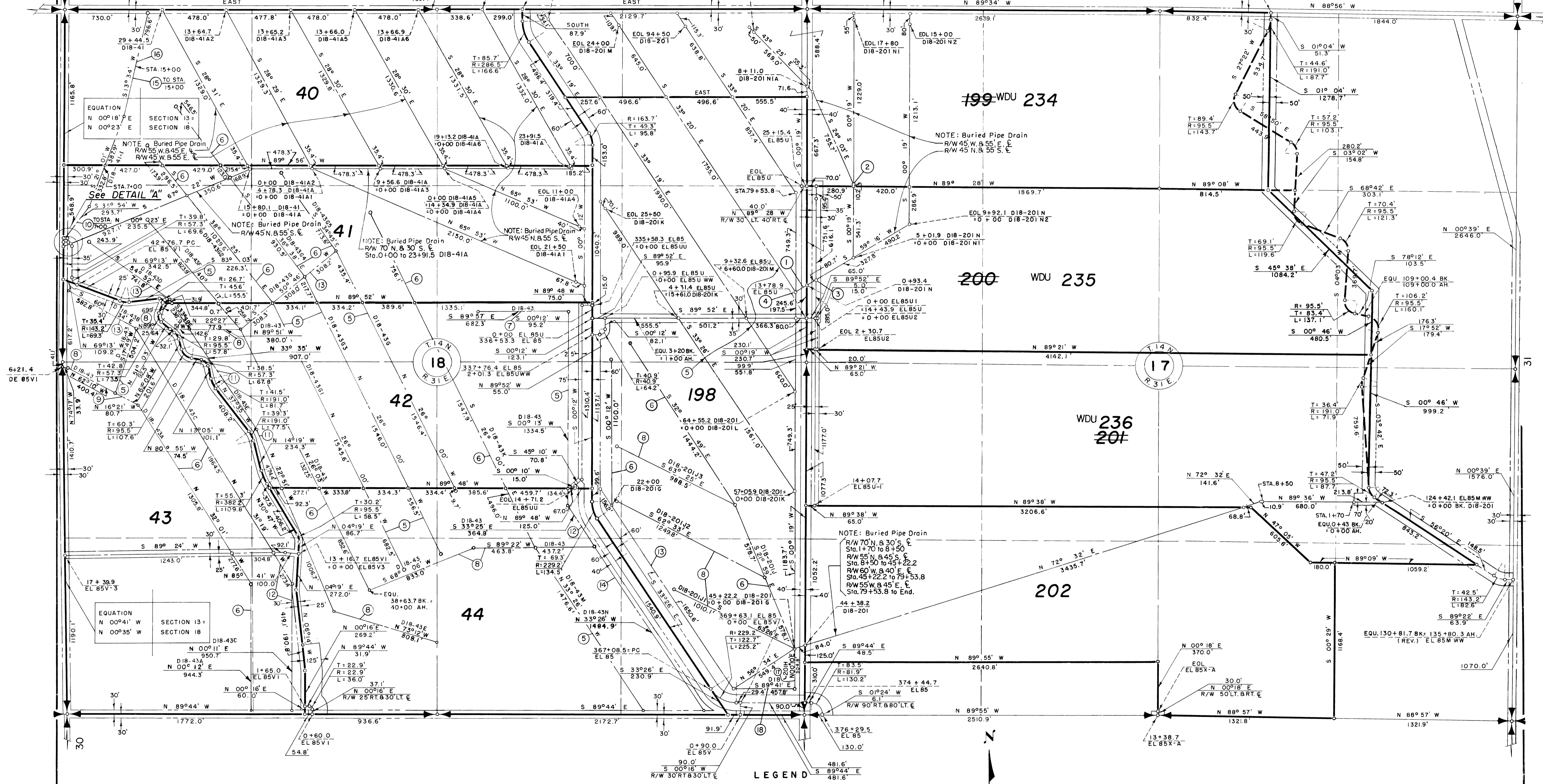
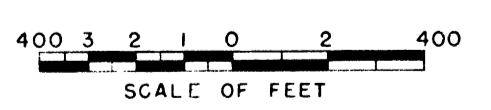


- NOTE: Buried Pipe Drain R/W**
- ① S 59° 16' W 93.4'
 - ② S 51.0' DIB-201 NI
+0+00' DIB-201 NIA
 - ③ 17+28.9 EL 85U
+1+74.1 DIB-201N
 - ④ 0+00 DIB-201M
+72+04.5 DIB-201
+0+00' DIB-201 N
 - ⑤ 45' W & 55' E
 - ⑥ 55' W & 45' E
 - ⑦ 60' S & 40' W
 - ⑧ 45' N & 55' S
 - ⑨ 55' S & 45' N
 - ⑩ 55' W & 70' E
 - ⑪ 55' OR TO LAT. W. & 45' E.
 - ⑫ 55' W. & 45' OR TO LAT. E.
 - ⑬ 55' N. & 45' S
 - ⑭ 60' W. & 70' E.
 - ⑮ 30' W. & 70' E.
 - ⑯ 30' W. & 30' E.
 - ⑰ 60' W. & TO RD. E.
 - ⑱ 65' N. & 35' S.



Drawn H.M.R. - K.S.
 Checked R.E.H.
 Surveys certified
A.J. Davidson
 Chief, Engr. Div.
 DATE 7-11-60



198 Unit Number

REV. TO 12-31-85	<u>ds</u>
REV. TO 12-28-73	<u>dc</u>
REV. TO 12-24-68	<u>cm</u>
REV. TO 7-31-67	<u>cm</u>

I certify that this is Sheet
 5 of 9 Supplemental Sheets
 of the Fourth Revision
 of the Final Farm Unit Plat
 of Irrigation Block 18.

M.B. Austin
 Regional Director
 DATE 7-22-60