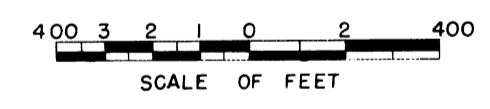


58

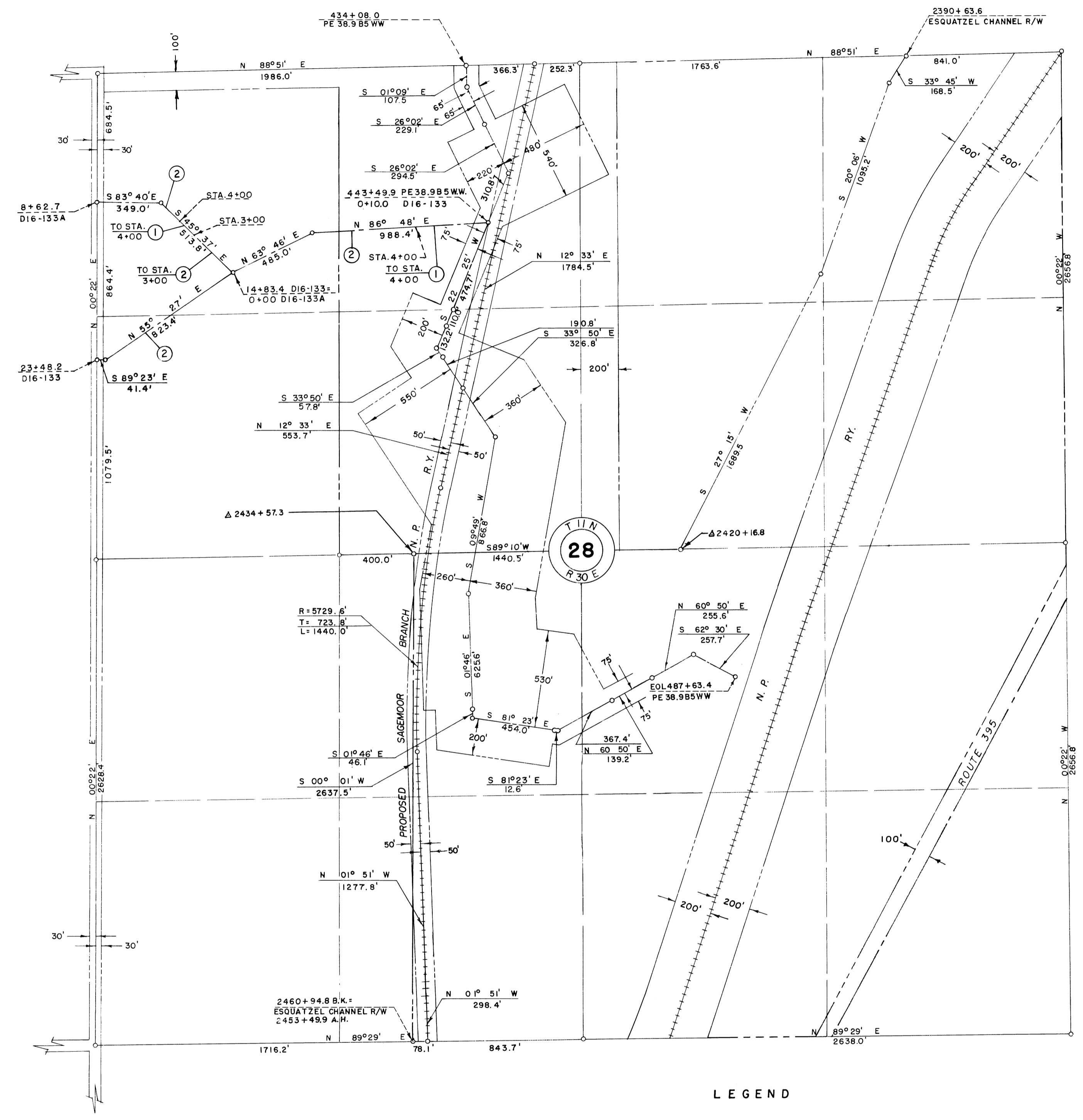
NOTE: Buried Pipe Drain R/W

① 55' N. & 65' S.

② 45' N. & 55' S.

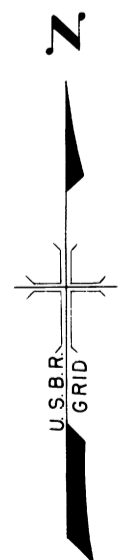


Drawn F.E.H. W.G.L.
 Checked C.B.L.
 Surveys certified
J.D. Humes
 Chief, Engr. Div. of D.&C. Div.
 DATE 7-9-57



LEGEND

- Rights of Way for Roads
- Rights of Way for Canals
- Rights of Way for Drains



REV. TO 11-5-81	dc
REV. TO 7-31-69	CMc

NOTE: Supplemental Data for Right of Way only to be attached to and filed with the Farm Unit Plat of Irrigation Block 16.

Wm. H. Tuller
 Regional Director (Act.)
 DATE 7-15-57

222-116-29974-98