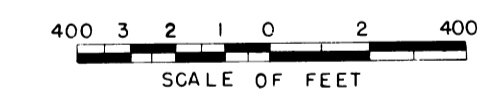
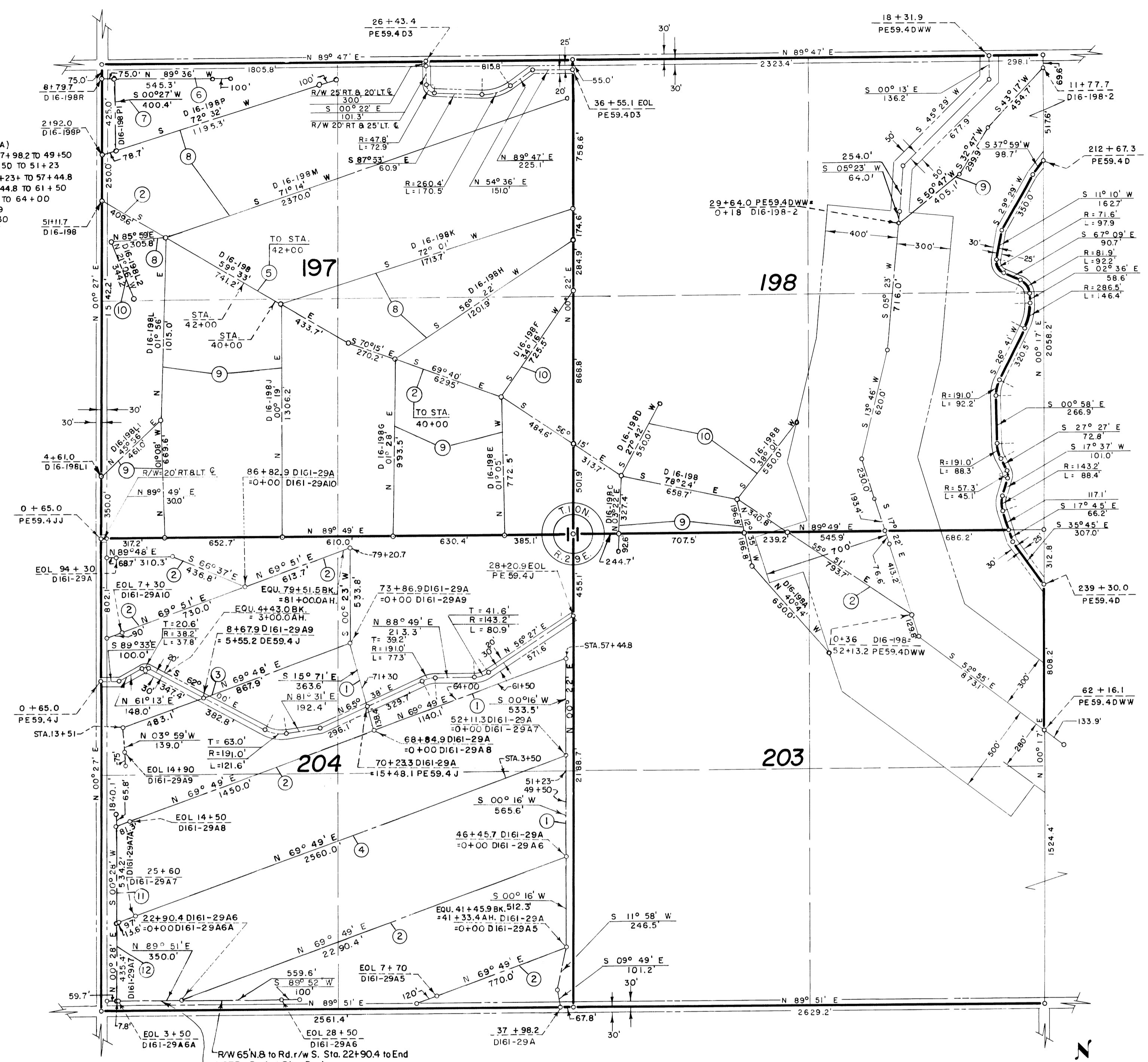


- NOTE: Buried Pipe Drain (D161-29A)
- 1 R/W 65' W. & 35' OR TO UNIT BOD. E. STA. 37+98.2 TO 49+50
  - 2 R/W 95' W. & 35' OR TO UNIT BOD. E. STA. 49+50 TO 51+23
  - 3 R/W 65' W. & 35' OR TO UNIT BOD. E. STA. 51+23 TO 57+44.8
  - 4 R/W 55' OR TO LAT. R/W N. & 45' S. STA. 57+44.8 TO 61+50
  - 5 R/W 70' OR TO LAT. R/W N. & 70' S. STA. 61+50 TO 64+00
  - 6 R/W 55' N. & 45' S. STA. 64+00 TO 68+84.9
  - 7 R/W 70' W. & 65' E. STA. 68+84.9 TO 71+30
  - 8 R/W 45' W. & 55' E. STA. 71+30 TO 79+20.7
- 2 BURIED PIPE DRAIN  
R/W 55' N. & 45' S. E.
  - 3 BURIED PIPE DRAIN  
R/W 55' N. & 45' S. E. TO STA. 13+51  
R/W 35' W. & 65' E. STA. 13+51 TO END
  - 4 BURIED PIPE DRAIN  
R/W 70' EACH SIDE E. TO STA. 3+50  
R/W 55' N. & 45' S. E. STA. 3+50 TO END

- NOTE: Buried Pipe Drain R/W
- 5 75' N. & 65' S.
  - 6 RD. N. & 55' S.
  - 7 RD. W. & 55' E.
  - 8 45' N. & 55' S.
  - 9 55' W. & 45' E.
  - 10 45' W. & 55' E.
  - 11 TO RD. W. & 45' E.
  - 12 TO RD. W. & 55' E.



Drawn L.E.M.  
 Checked WES-JLR-CBL  
 Surveys certified  
L.V. Downs  
 Chief, Engr. Div.  
 Supervising Engineer  
 DATE 5/20/53



LEGEND

- ==== Rights of Way for Roads
- Boundaries of Units
- Rights of Way for Canals
- Rights of Way for Drains

203 Unit Number

REV. TO 11-17-82	dc
REV. TO 10-19-78	dc
REV. TO 12-28-73	dc

I certify that this is Sheet  
 72 of 88 Supplemental Sheets  
 of the Revision  
 of the Final Farm Unit Plot  
 of Irrigation Block 16  
H.T. Nelson  
 Regional Director  
 DATE 9-1-53