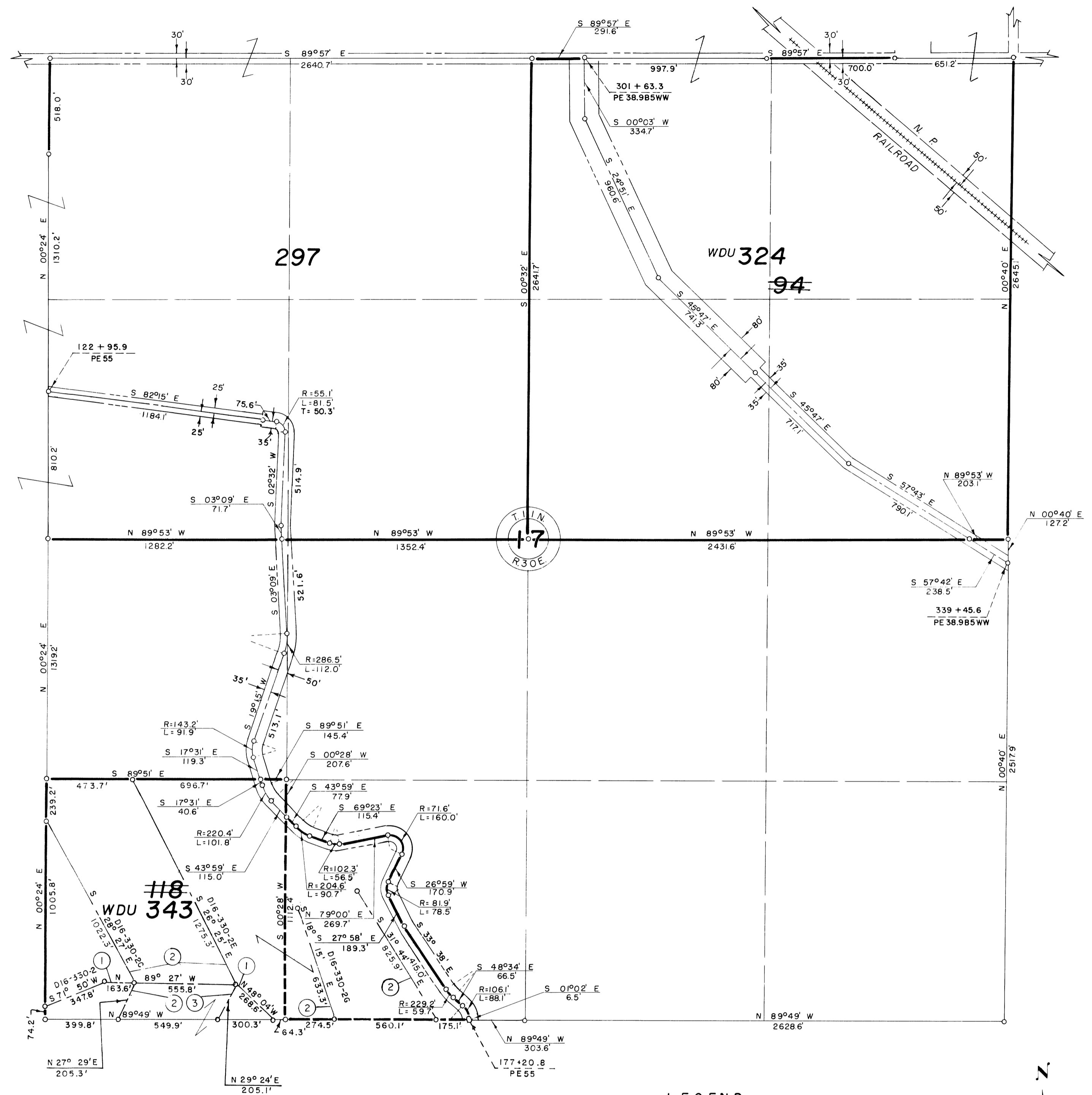
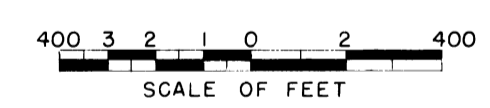


42

44



- NOTE: Buried Pipe Drain R/W
- ① 55' N. & 45' S.
 - ② 55' W. & 45' E.
 - ③ 45' W. & 55' E.



Drawn J.W.S.
 Checked W.E.S.-C.B.L.-J.L.R.
 Surveys certified
V.D. Humes
 Chief, Engr. Div.
 D.f.C. Div.
 DATE 8-25-59

- LEGEND
- ==== Rights of Way for Roads
 - ==== Rights of Way for Proposed Roads
 - Boundaries of Units
 - ==== Rights of Way for Canals
 - ==== Rights of Way for Drains
 - Former Unit Boundary

118 Unit Number

REV. TO 12-1-80	<i>de</i>
REV. TO 6-27-79	<i>de</i>
REV. TO 7-31-67	<i>C.M.</i>
REV. TO 12-31-65	<i>B.J.M.</i>
REV. TO 9-1-64	<i>B.J.M.</i>

I certify that this is Sheet
 13 of 36 Supplemental Sheets
 of the Fifth Revision of
 the Final Farm Unit Plat of
 Irrigation Block 16.

W.G. Draper
 Regional Director (Act.)
 DATE 8-26-59

222-116-31309-43