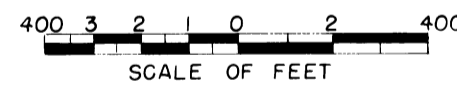
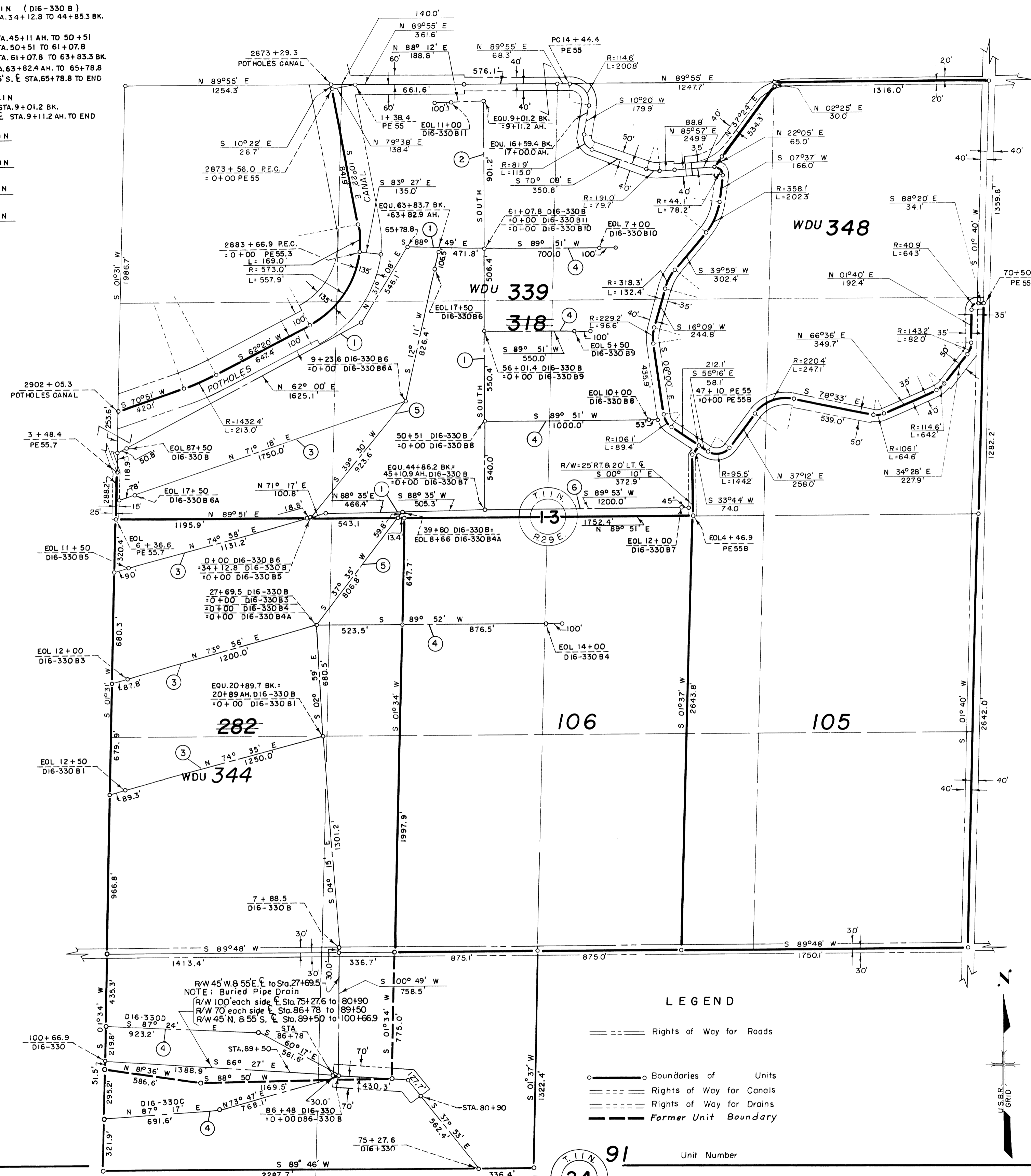


- 1 BURIED PIPE DRAIN (D16-330 B)  
R/W 50' N. & 50' S. E. STA. 34+12.8 TO 44+85.3 BK.  
R/W
- 2 BURIED PIPE DRAIN  
R/W 35' W. & 65' E. E. STA. 50+51 TO 61+07.8  
R/W 65' N. & 35' S. E. STA. 61+07.8 TO 63+83.3 BK.  
R/W 55' N. & 45' S. E. STA. 63+82.4 AH. TO 65+78.8  
R/W TO CANAL R/W N. 45' S. E. STA. 65+78.8 TO END
- 3 BURIED PIPE DRAIN  
R/W 55' N. & 45' S. E. STA. 9+11.2 AH. TO END
- 4 BURIED PIPE DRAIN  
R/W 45' N. & 55' S. E.
- 5 BURIED PIPE DRAIN  
R/W 45' W. & 55' E. E.
- 6 BURIED PIPE DRAIN  
R/W 50' N. & 50' S. E.



Drawn J.W.S.  
Checked W.E.S.-C.B.L.-J.L.R.  
Surveys certified  
A.J. Davidson  
Chief, Engr. Div.

DATE 9-17-62

LEGEND

- Rights of Way for Roads
- --- ○ Boundaries of Units
- Rights of Way for Canals
- Rights of Way for Drains
- Former Unit Boundary

REV. TO 7-30-71	
REV. TO 7-31-70	<i>C.M.</i>
REV. TO 7-31-69	<i>C.M.</i>
REV. TO 7-31-67	<i>C.M.</i>
REV. TO 12-31-65	<i>R.L.M.</i>

I certify that this is Sheet  
9 of 20 Supplemental Sheets  
of the Eighth Revision  
of the Final Farm Unit Plat  
of Irrigation Block 16.

M.B. Austin  
Regional Director (Act.)  
DATE 9-25-62

222-116-32552-41

UNIT NUMBER  
24  
91