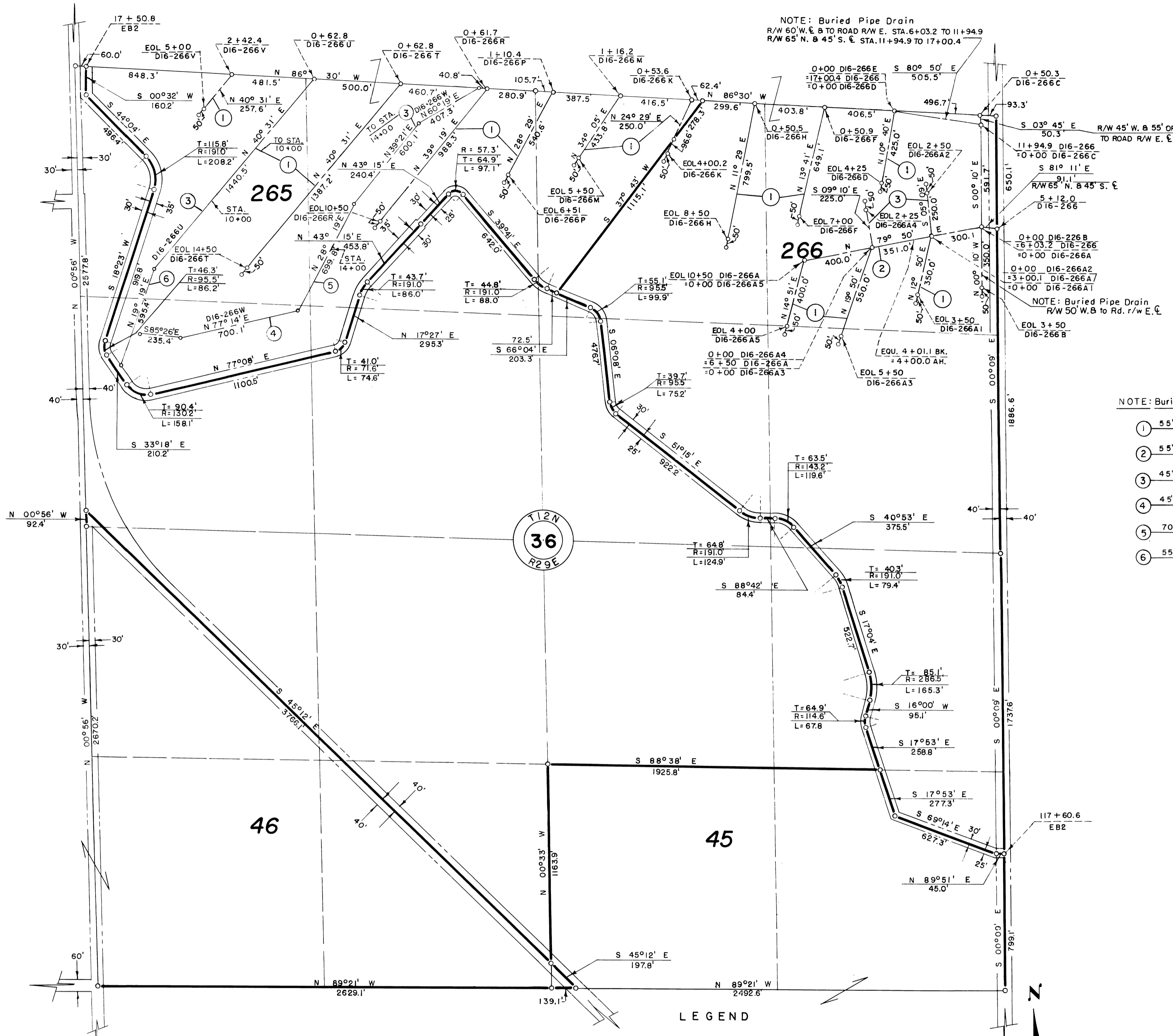


- ① Buried Pipe Drain  
R/W 55' W. & 45' E. & S.
- ② Buried Pipe Drain  
R/W 55' N. & 45' S. & E.
- ③ Buried Pipe Drain  
R/W 45' W. & 55' E. & S.



NOTE: Buried Pipe Drain  
R/W 60' W. & 45' S. TO ROAD R/W E. STA. 6+03.2 TO 11+94.9  
R/W 65' N. & 45' S. E. STA. 11+94.9 TO 17+00.4

NOTE: Buried Pipe Drain R/W

- ① 55' W. & 45' E.
- ② 55' N. & 45' S.
- ③ 45' W. & 55' E.
- ④ 45' N. & 55' S.
- ⑤ 70' W. & 70' E.
- ⑥ 55' E. & TO LAT. W.

Drawn FEH.  
Checked WES-CBL-JLR.  
Surveys certified  
A. J. Davidson  
Chief, Engr. Div.  
DATE 8-26-60

REV. TO 4-10-75	<i>de</i>
REV. TO 7-31-69	<i>CJM</i>

I certify that this is Sheet  
2 of 9 Supplemental Sheets  
of the 5<sup>th</sup> Revision  
of the Final Farm Unit Plat of  
Irrigation Block 16.  
M. B. Austin  
Regional Director (Act.)  
DATE 8-31-60