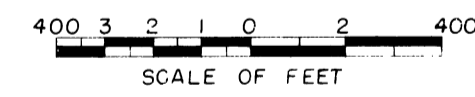
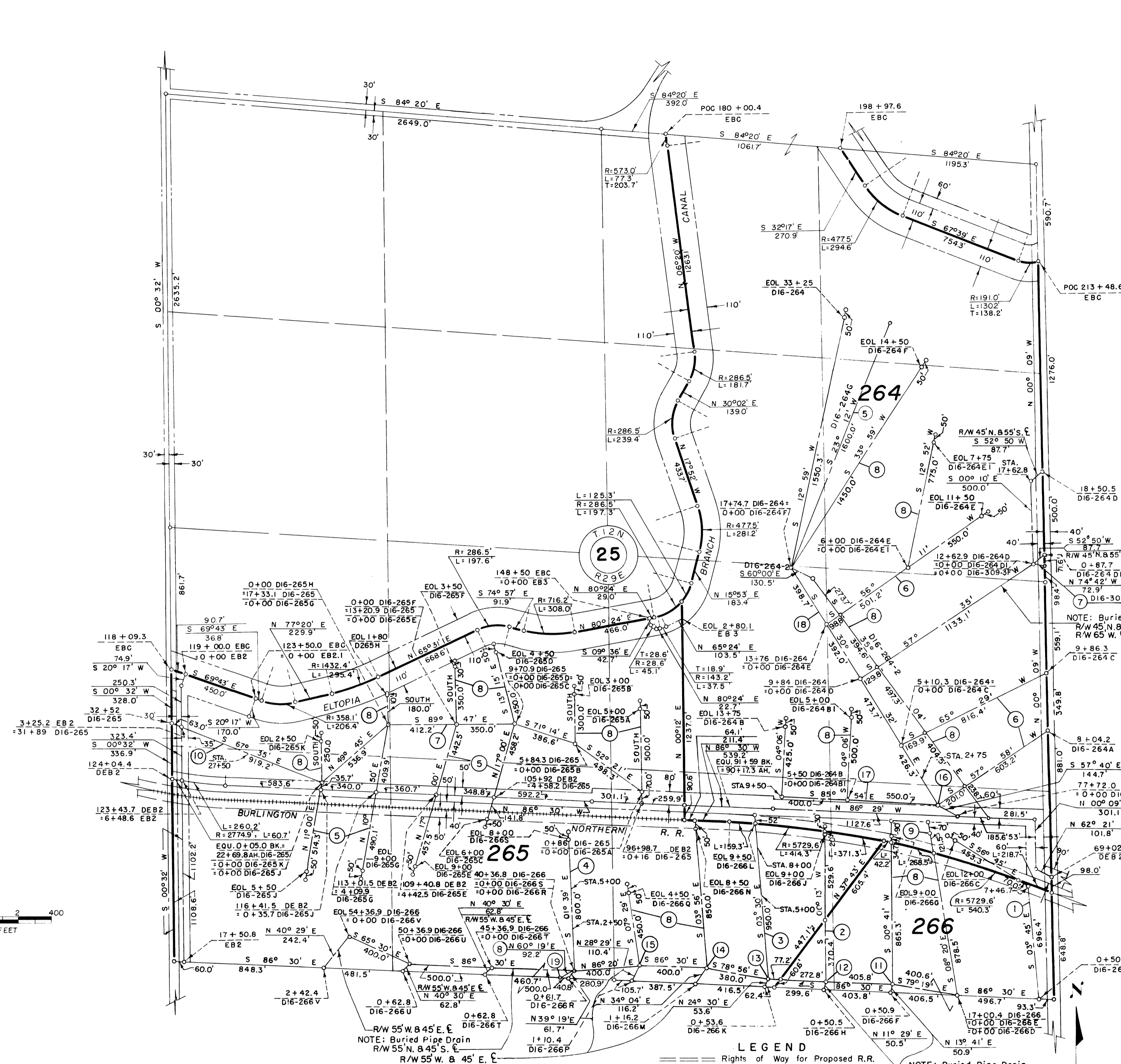


14-27

15



Drawn J.W.S.-C.R.A.
 Checked C.B.L.-J.L.R.
 Surveys certified
S.D. Humes
 Chief Eng. Div. OF D.F.C. Div.
 DATE 8/15/55



- 1 BURIED PIPE DRAIN
R/W 45' W. & 55' OR TO ROAD R/W E. TO STA. 7+46.7 TO END.
R/W 55' N. & 45' S. E. STA. 7+46.7 TO END.
- 2 BURIED PIPE DRAIN
R/W 65' W. & 28' E. E. E.
- 3 BURIED PIPE DRAIN
R/W 45' W. & 55' E. E. TO STA. 5+00
R/W 55' W. & 75' E. E. STA. 5+00 TO 8+00
R/W 45' W. & 55' E. E. STA. 8+00 TO END.
- 4 BURIED PIPE DRAIN
R/W 45' W. & 55' E. E. TO STA. 2+50
R/W 55' W. & 75' E. E. STA. 2+50 TO 5+00
R/W 45' W. & 55' E. E. STA. 5+00 TO END.
- 5 BURIED PIPE DRAIN
R/W 55' W. & 45' E. E. E.
- 6 BURIED PIPE DRAIN
R/W 45' N. & 55' S. E. E.
- 7 BURIED PIPE DRAIN
R/W 55' N. & 45' S. E. E.
- 8 BURIED PIPE DRAIN
R/W 45' W. & 55' E. E. E.
- 9 EOL 10+00
D16-266 E
- 10 BURIED PIPE DRAIN
R/W 55' N. & 45' S. E. E. TO STA. 27+50
R/W 80' N. & 80' S. E. STA. 27+50 TO 32+52
- 11 21+01 D16-266
=0+00 D16-266 G
=0+00 D16-266 F
- 12 25+06.8 D16-266
=0+00 D16-266 J
=0+00 D16-266 H
- 13 28+56.8 D16-266
=0+00 D16-266 L
=0+00 D16-266 K
- 14 32+36.8 D16-266
=0+00 D16-266 N
=0+00 D16-266 M
- 15 36+36.8 D16-266
=0+00 D16-266 O
=0+00 D16-266 P
- 16 EQU. 1+44.7 BK.
=0+00 D16-264
=0+00 D16-264 A
- 17 BURIED PIPE DRAIN
R/W 65' N. & 45' S. E. TO STA. 9+50
R/W 45' W. & 55' E. E. STA. 9+50 TO 13+75
- 18 R/W 45' W. & 55' E. E.
EXCEPT STA. 0+84 AH. TO 2+75
R/W 60' W. & 75' E. E.
- 19 0+92.2
D16-266 W

NOTE: Buried Pipe Drain
R/W 45' N. & 55' S. E. to Sta. 12+62.9
R/W 65' W. & 28' E. E. to road r/w E. Sta. 12+62.9 to 17+62.8

REV. TO 4-10-75	de
REV. TO 12-28-73	de
REV. TO 7-31-69	C.M.
REV. TO 7-31-67	C.M.

LEGEND
 --- Boundaries of Units
 --- Rights of Way for Canals
 --- Rights of Way for Drains
 --- Rights of Way for Roads

I certify that this is Sheet
 5 of 32 Supplemental Sheets
 of the Second Revision of
 the Final Farm Unit Plat of
 Irrigation Block 16
Wm. H. Tuller
 Regional Director (Act.)
 DATE 8/23/55

265 Unit Number

222-116-27604-16