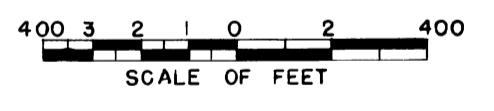
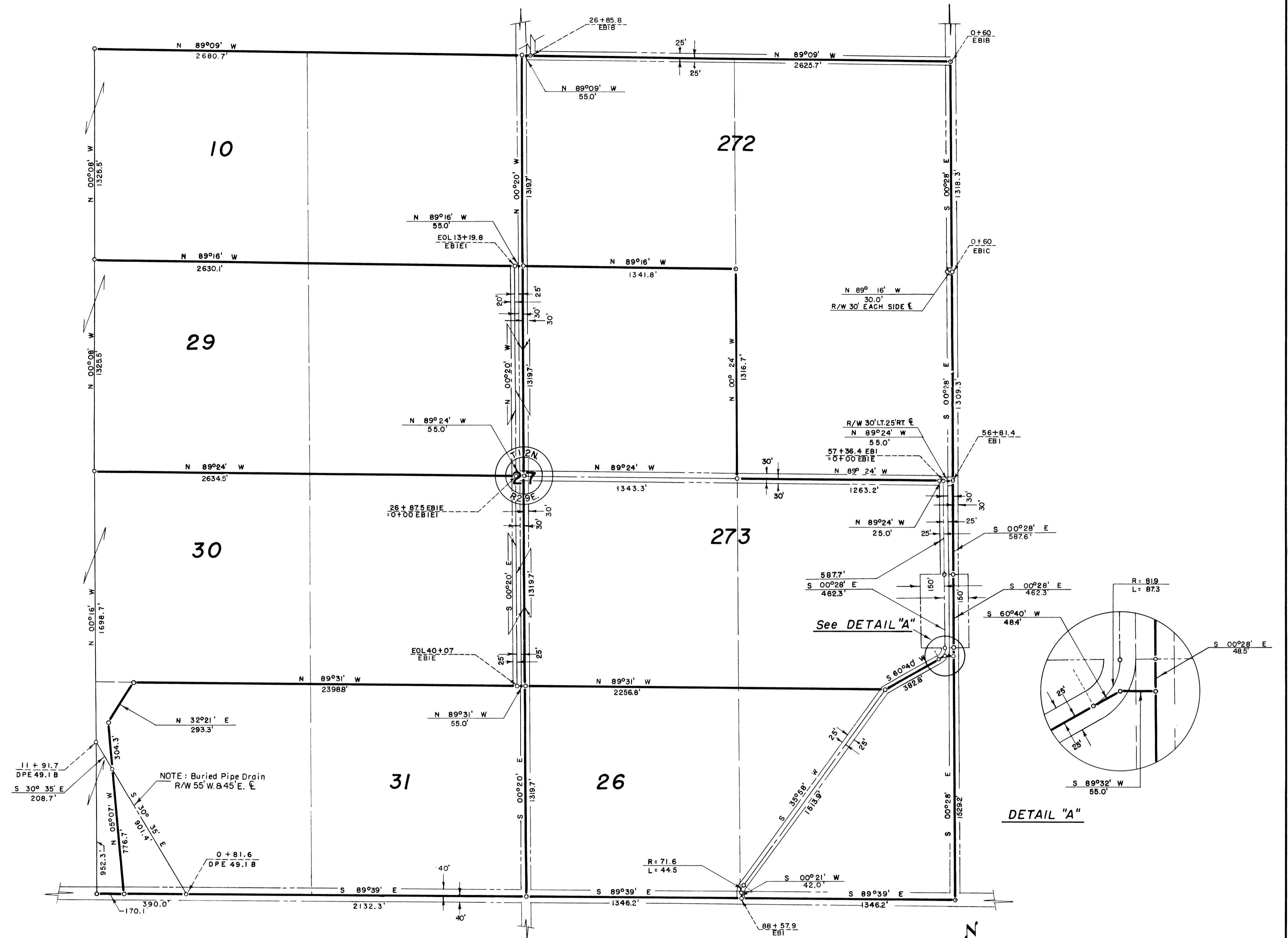


13



Drawn FEH  
 Checked GBL - JLR  
 Surveys certified  
J. D. Humes  
 Chief, Eng. Div. of D.E.C. Div.

DATE 7-9-57

LEGEND

- ==== Rights of Way for Roads
- Boundaries of Units
- ==== Rights of Way for Canals
- ==== Rights of Way for Drains

10 Unit Number

REV TO 12-31-65 8/m

I certify that this is Sheet  
 1 of 26 Supplemental Sheets  
 of the Third Revision  
 of the Final Farm Unit Plat  
 of Irrigation Block 16.  
Wm. H. Tuller  
 Regional Director (Act.)  
 DATE 7-15-57

222-116-29974-14