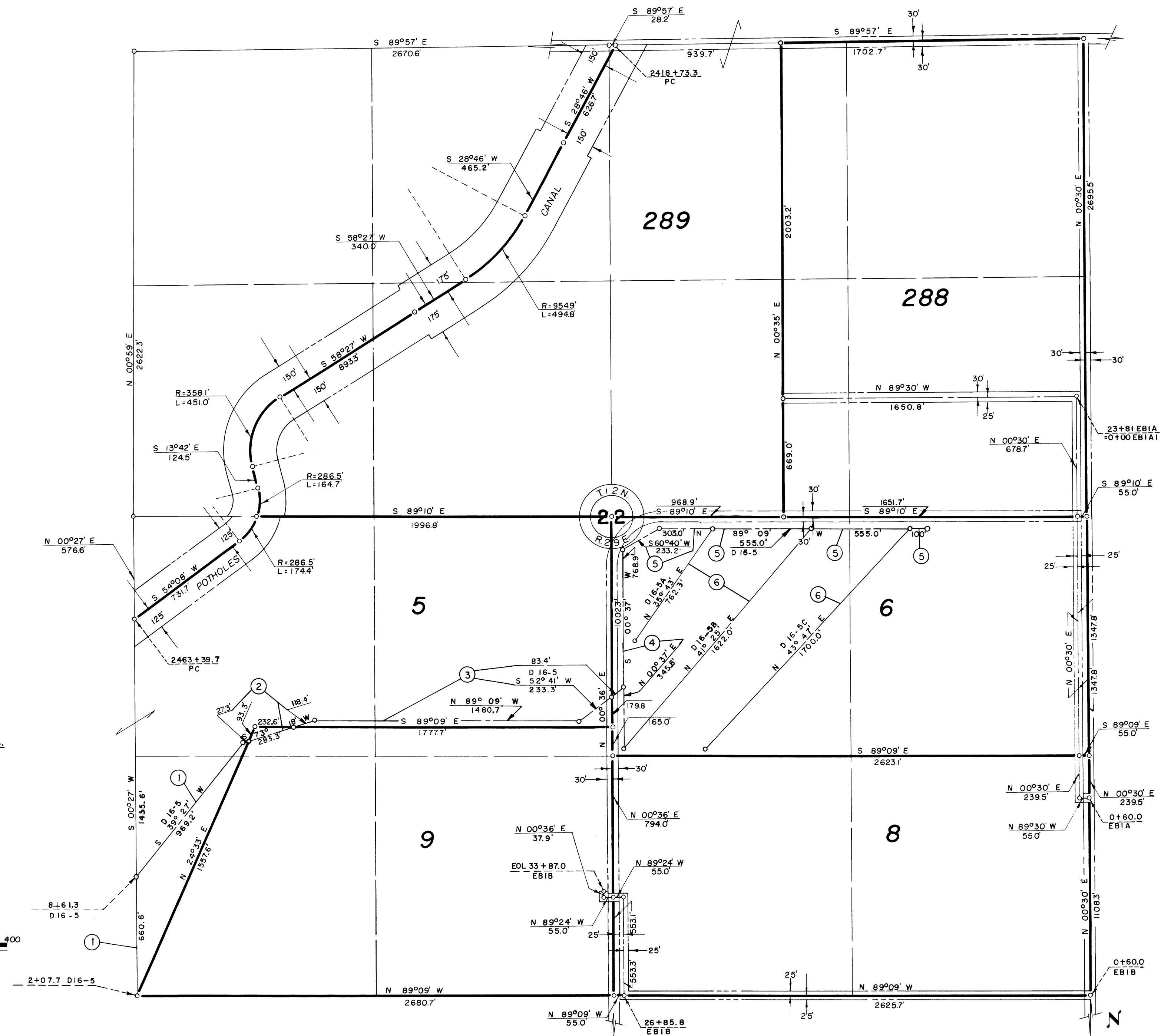


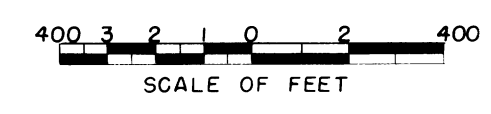
19-25

12

10



- NOTE: Buired Pipe Drain R/W
- ① 45' W. & 55' E.
 - ② 45' N. & 55' S.
 - ③ 65' N. & 35' OR F.U. BDY. S.
 - ④ 65' E. & ROAD W.
 - ⑤ 65' S. & ROAD N.
 - ⑥ 55' W. & 45' E.



Drawn J.W.S.
 Checked C.B.L.-J.L.R.
 Surveys certified
J.D. Humes
 Chief, Engr. Div.

DATE 8-25-59

- LEGEND
- ==== Rights of Way for Roads
 - ==== Rights of Way for Proposed Roads
 - Boundaries of Units
 - ==== Rights of Way for Canals
 - ==== Rights of Way for Drains

4 Unit Number

REV. TO 12-28-73	<i>ds</i>
REV. TO 12-31-65	<i>B.F.M.</i>

I certify that this is Sheet 1 of 36 Supplemental Sheets of the Fifth Revision of the Final Farm Unit Plat of Irrigation Block 16.

W.G. Droper
 Regional Director (Act.)
 DATE 8-26-59

222-116-31309-11