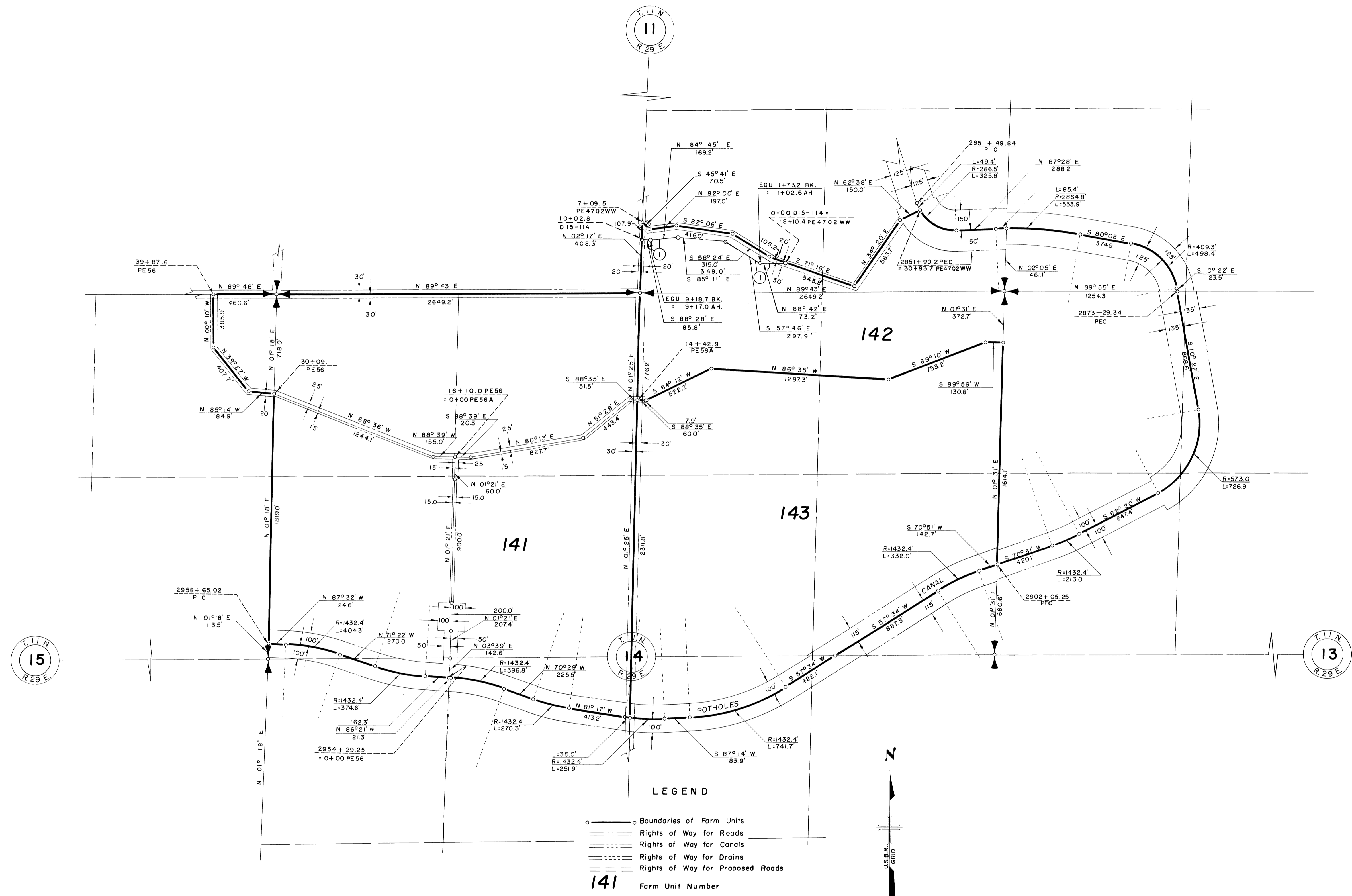


NOTE: Buried Pipe Drain R/W
① 65' S. & W.W. N.



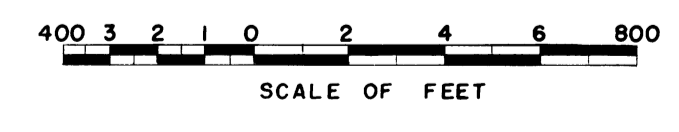
T.I.N.
R 29 E
15

T.I.N.
R 29 E
13

LEGEND

- — ○ Boundaries of Farm Units
- — — Rights of Way for Roads
- — — Rights of Way for Canals
- — — Rights of Way for Drains
- — — Rights of Way for Proposed Roads

141 Farm Unit Number



Drawn J.W.S.
Checked C.B.L. & J.L.R.
Surveys certified
A.J. Davidson
Chief, Engr. Div. of D.C. Div. (Act.)
DATE 10-6-59

I certify that this is Sheet
13 of 20 Supplemental Sheets
of the 5th Revision of the
Final Farm Unit Plat of
Irrigation Block 15.
M. Boyd Austin
Regional Director (Act.)
DATE 10-9-59