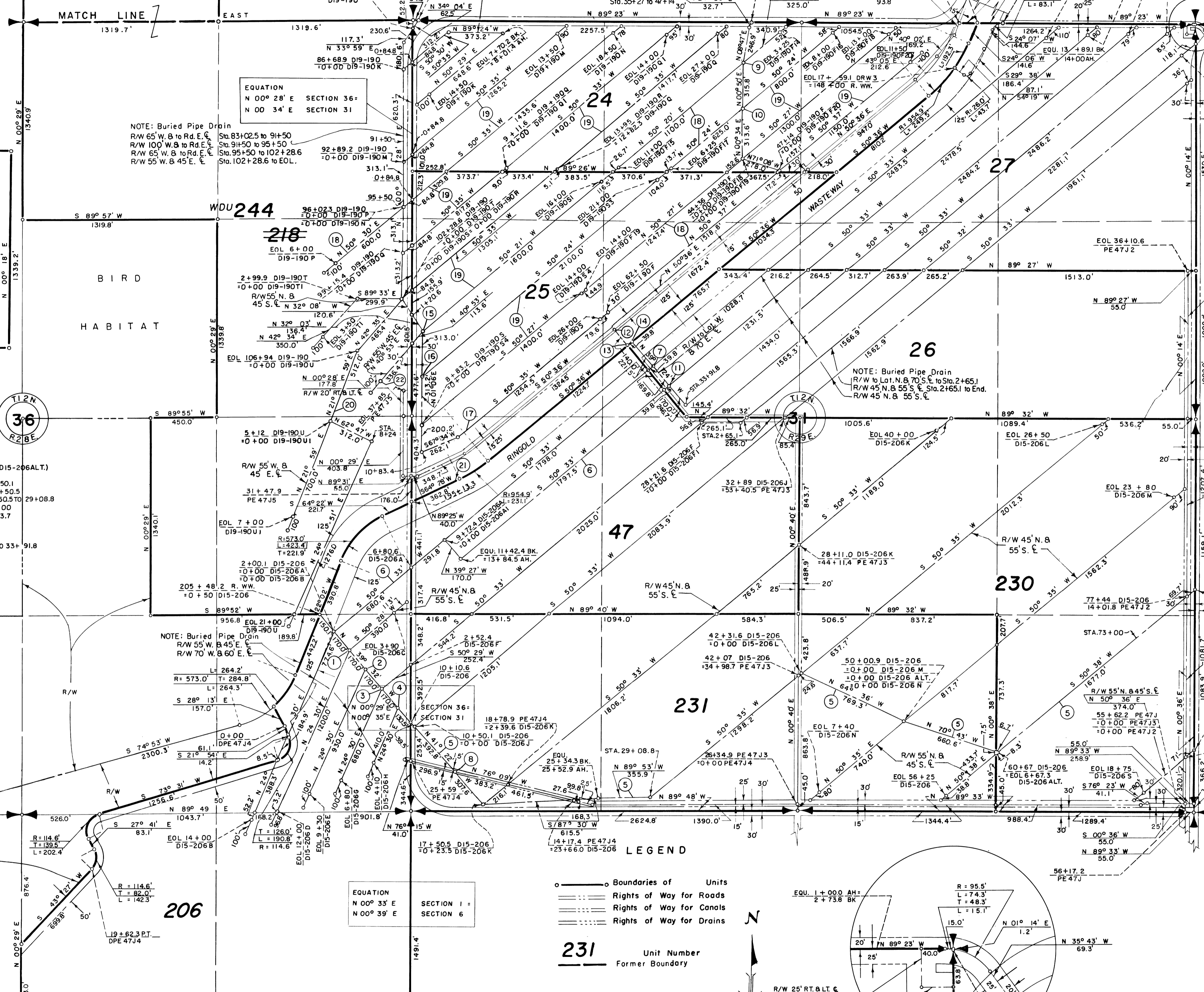


25  
R 28 E



- 1 3+70.1 D15-206
- 2 0+00 D15-206C
- 3 5+40.1 D15-206
- 4 7+10.1 D15-206
- 5 0+00 D15-206F
- 6 0+00 D15-206G
- 7 8+80.1 D15-206
- 8 0+00 D15-206H
- 9 BURIED PIPE DRAIN (D15-206)(D15-206ALT.)
- 10 R/W 55' W. & 45' E. TO STA. 5+40.1
- 11 R/W 65' W. & 55' E. STA. 5+40.1 TO 10+50.1
- 12 R/W 55' W. & 45' E. STA. 10+50.1 TO 17+50.5
- 13 R/W 70' N. & TO RD. OR LAT. S. STA. 17+50.5 TO 29+08.8
- 14 R/W 45' N. & 55' S. STA. 29+08.8 TO 73+00
- 15 R/W 55' N. & 65' S. STA. 73+00 TO 78+13.7
- 16 BURIED PIPE DRAIN (D15-206A)
- 17 R/W 45' N. & 55' S. TO STA. 32+21.8
- 18 R/W TO LAT. W. & 70' E. STA. 32+21.8 TO 33+91.8
- 19 18+37.8 D15-206A1
- 20 12+30.2 D15-26
- 21 22+62.1 PE 47J4
- 22 14+42.9 D15-206

See DETAIL "A"

- 9 38+06.6 D19-190 F
- 10 0+00 D19-190 F14
- 11 0+00 D19-190 F15
- 12 41+22.4 D19-190 F
- 13 0+00 D19-190 F16
- 14 0+00 D19-190 F17
- 15 EOL 4+00 D15-26
- 16 32+21.3 D15-206A
- 17 0+00 D15-206A2
- 18 67+92.2 PE 47J3
- 19 0+00 PE 47J5
- 20 177+00 RINGOLD WW.
- 21 66+52.9 PE 47J3
- 22 176+60.3 RINGOLD WW.
- 23 0+8.7 D15-26
- 24 2+57.0 D19-190S
- 25 0+00 D19-190 S1
- 26 0+00 D19-190 S2
- 27 5+70.0 D19-190S
- 28 0+00 D19-190 S3
- 29 BURIED PIPE DRAIN (D19-190S)
- 30 R/W 35' OR TO RD. R/W & 65' E. TO STA. 10+83.4 TO END
- 31 R/W 45' N. & 55' S. STA. 10+83.4 TO END
- 32 BURIED PIPE DRAIN
- 33 R/W 55' N. & 45' S. E.
- 34 BURIED PIPE DRAIN
- 35 R/W 45' N. & 55' S. E.
- 36 BURIED PIPE DRAIN (D19-190U)
- 37 R/W 55' W. & 45' E. TO STA. 5+12
- 38 R/W 45' N. & 55' S. STA. 5+12 TO 8+24 TO END
- 39 R/W 55' W. & 45' S. STA. 8+24 TO END
- 40 EQU. 193+91.2 BK.
- 41 193+85.7 AH.
- 42 EOL 4+50
- 43 D19-190S2
- 44 78+13.7
- 45 D15-206

Drawn J.W.S.  
Checked C.B.L. & R.L.V.  
Surveys certified

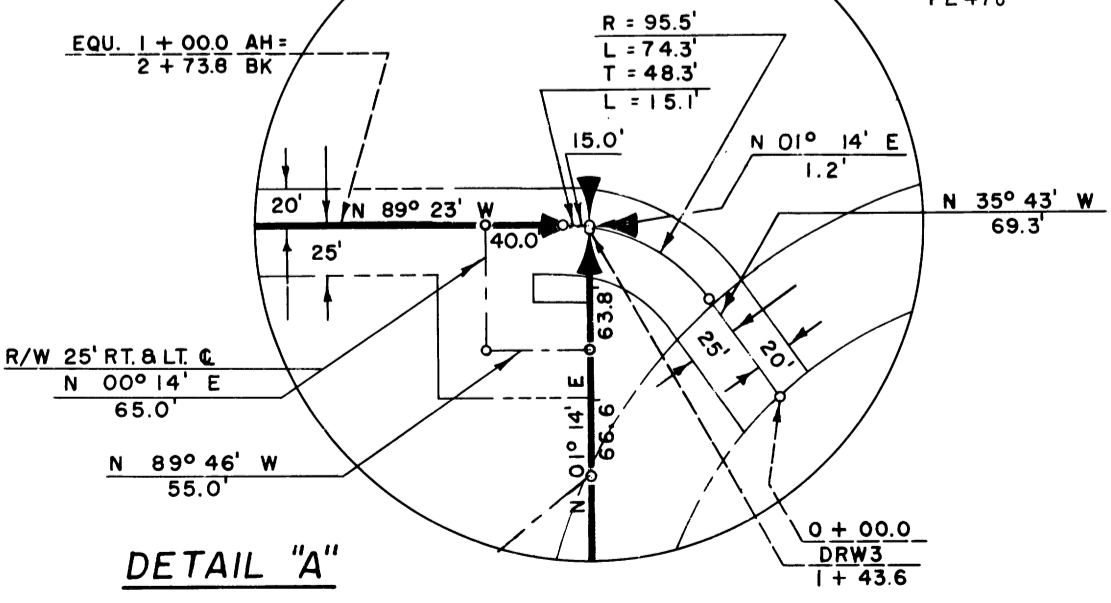
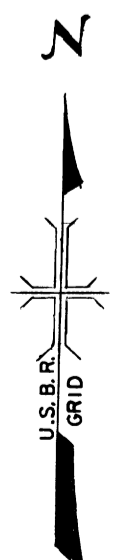
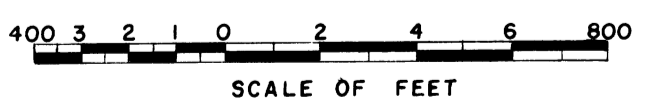
A.V. Davidson  
Chief, Engr. Div.  
of Dir. Div. (Act.)

DATE 10-6-59

1  
R 28 E

LEGEND

- Boundaries of Units
- Rights of Way for Roads
- Rights of Way for Canals
- Rights of Way for Drains
- 231 Unit Number
- Former Boundary



REV. TO 12-28-73	de
REV. TO 12-8-64	blm

I certify that this is Sheet  
4 of 20 Supplemental Sheets  
of the Sixth Revision of the  
Final Farm Unit Plat of  
Irrigation Block 15.  
M. Boyd Austin  
Regional Director  
DATE 10-9-59