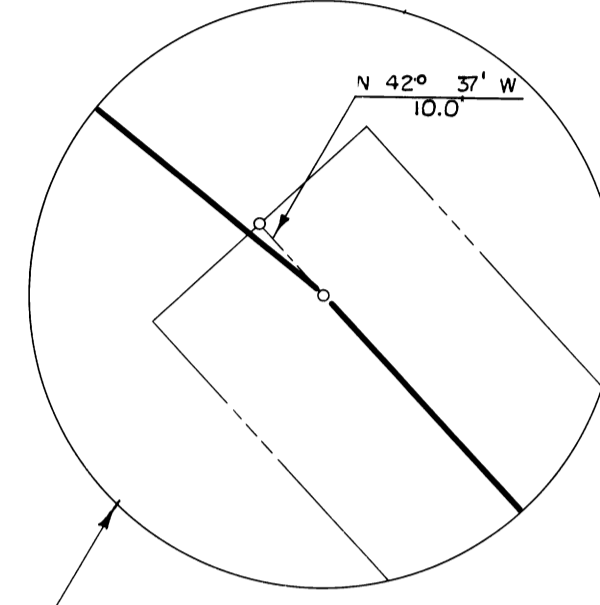


BURIED PIPE DRAIN (D19-190A)
 R/W 45' N. & 55' S. E. TO STA. 10+90
 R/W 70' N. & 80' S. E. STA. 10+90 TO 14+50
 R/W 45' N. & 55' S. E. STA. 14+50 TO 19+95.5
 R/W TO RD. N. & 70' S. E. STA. 19+95.5 TO 24+50.5
 R/W 45' N. & 55' S. E. STA. 24+50.5 TO 26+03.7
 R/W 45' N. & 55' S. E. STA. 26+03.7 TO 41+50
 R/W 70' N. & 80' S. E. STA. 41+50 TO 45+50
 R/W 45' N. & 55' S. E. STA. 45+50 TO 51+45

BURIED BURIED DRAIN (D19-190E)
 R/W 70' N. & 30' S. E. TO STA. 7+24 ; R/W 45' N. & 55' S. E. STA. 7+24 TO 21+72
 R/W 55' W. & 45' E. E. STA. 21+72 TO 23+85
 R/W 45' N. & 55' S. E. STA. 23+85 TO 49+23.9
 R/W TO RD. R/W N. & 75' S. E. STA. 49+23.9 TO 54+41.8
 R/W 55' N. & 45' S. E. STA. 54+41.8 TO END.



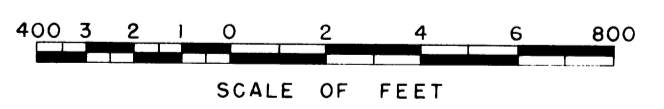
- 20 --- 11 + 42.6 D19-190F13
+0+00 D19-190F13 J
- 21 --- N 25° 01' E
213.0'
- 22 --- 23 + 85.0 D19-190E
+0+00 D19-190E17
- 23 --- 25 + 89.4 D19-190E
+0+00 D19-190E18
+0+00 D19-190E19
- 24 --- 27 + 99.0 D19-190E
+0+00 D19-190E20
+0+00 D19-190E21
- 25 --- 30 + 56.1 D19-190E
+0+00 D19-190E22
+0+00 D19-190E23
- 26 --- 33 + 13.6 D19-190E
+0+00 D19-190E24
+0+00 D19-190E25
- 27 --- EOL 19 + 58.9
PE 47 B2
- 28 --- 0 + 00 D19-190F13
+25 + 44.7 D19-190F12
+0+00 D19-190F12
- 29 --- 2 + 27.9 D19-190F13
+0+00 D19-190F13 A
+0+00 D19-190F13 B
- 30 --- 4 + 55.8 D19-190F13
+0+00 D19-190F13 C
+0+00 D19-190F13 D
- 31 --- 6 + 83.7 D19-190F13
+0+00 D19-190F13 E
+0+00 D19-190F13 F
- 32 --- 9 + 11.6 D19-190F13
+0+00 D19-190F13 G
+0+00 D19-190F13 H

- 33 --- 0 + 00 D19-190A16
+4 + 50.8 D19-190A16
+0+00 D19-190A16 C
- 34 --- 16 + 40.9 D19-190A16
+0+00 D19-190A16 F
- 35 --- S 75° 09' W
93.7'
- 36 --- BURIED PIPE DRAIN (D19-190A16)
R/W 45' N. & 55' S. E. TO STA. 2+76.8 --- R/W 70' S. & 30' N. E. STA. 2+76.8 TO 6+25.5
R/W 55' N. & 45' S. E. STA. 6+25.5 TO 7+75.3
R/W 55' W. & 45' E. STA. 7+75.3 TO 14+59.1
R/W TO RD. S. & 80' N. E. STA. 14+59.1 TO 17+76.8
R/W 45' N. & 55' S. E. STA. 17+76.8 TO END.
- 37 --- 6 + 25.5 D19-190A16
+0+00 D19-190A16 E
- 38 --- EOL 18 + 20
D19-190A16 F
- 39 --- EOL 36 + 00
D19-190A16 F
- 40 --- 171.8'
55.0'
N 45° 44' W
135.9'
- 41 --- S 44° 16' W
58.0'
- 42 --- EOL 8 + 15
D19-190A16 C
- 43 --- EOL 19 + 58.9
PE 47 B2
- 44 --- EOL 19 + 58.9
PE 47 B2
- 45 --- 8 + 37.3 D19-190F13 G
+0+00 D19-190F13 G

- 1 --- POC 117+76.2
R WW
- 2 --- S 34° 05' W
109.6' 90.8'
- 3 --- L= 58.2'
R= 716.2'
L= 369.5'
- 4 --- 0 + 00 D15-19R
+9 + 70.7 D15-19
+0+00 D15-19C
- 5 --- 0 + 00 D15-19D
+15 + 55.4 D15-19
+0+00 D15-19E
- 6 --- BURIED PIPE DRAIN
R/W 45' N. & 55' S. E.
- 7 ---
- 8 --- BURIED PIPE DRAIN
R/W 45' W. & 55' E. E.
- 9 --- EQU. 118 + 34.3 BK.
118 + 63 AH.
- 10 --- BURIED PIPE DRAIN
R/W 30' S. & 70' N. E.
STA. 0+00 TO 11+42.6
- 11 ---
- 12 --- 39 + 65.8 D19-190A
+0+00 D19-190A15
+0+00 D19-19A16
- 13 --- 0+00 D19-190A16 B
+2+76.8 D19-190A16
+0+00 D19-190A16 A
- 14 --- 0+00 D19-19A13
+37+90.4 D19-190A
+0+00 D19-190A14
- 15 --- 0+00 D19-190A11
+36+15.1 D19-190A
+0+00 D19-190A12
- 16 --- 34 + 39.7 D19-190A
+0+00 D19-190A10
- 17 --- 32 + 01.9 D19-190A
+0+00 D19-190A8
- 18 --- BURIED PIPE DRAIN (D19-190F13 G)
R/W 45' W. & 55' E. E. STA. 8+37.3 TO 11+52.3
R/W 70' N. & 80' S. E. STA. 11+52.3 TO 18+50
R/W 45' N. & 55' S. E. STA. 18+50 TO END.
- 19 --- EOL 88 + 67
PE 47 J3
+0+00 PE 47 J6

Drawn H.M.R.
 Checked M.W.C. & W.E.S.
 Surveys certified
A.J. Davidson
 Chief, Engr. Div.
 of D.C. Div. (Act.)
 DATE 10-6-59

LEGEND
 --- Boundaries of
 --- Rights of Way for Roads
 --- Rights of Way for Canals
 --- Rights of Way for Drains
 --- Unit Number



REV. TO 7-29-66 C.M.
 REV. TO 12-8-64 B.M.

I certify that this is Sheet
 5 of 20 Supplemental Sheets
 of the Sixth Revision of the
 Final Farm Unit Plat of
 Irrigation Block 15.
M. Boyd Austin
 Regional Director (Act.)
 DATE 10-9-59

REV. TO 10-20-78 de
 REV. TO 12-28-73 de