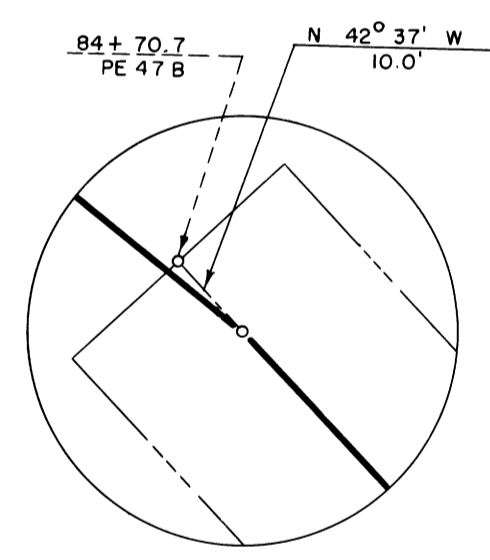
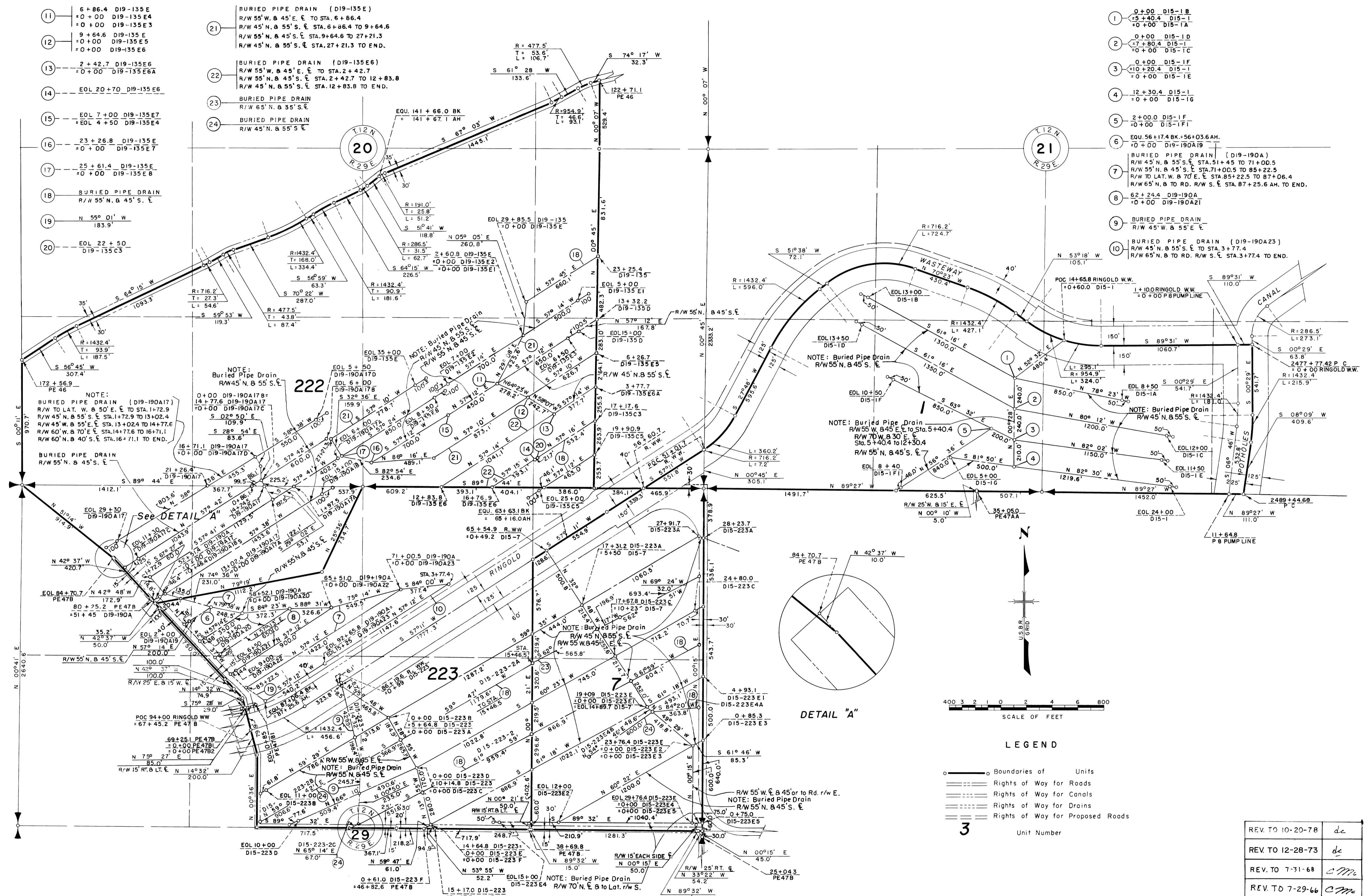


- 11 6+86.4 D19-135E  
+0+00 D19-135E4  
+0+00 D19-135E3
- 12 9+64.6 D19-135E  
+0+00 D19-135E5  
+0+00 D19-135E6
- 13 2+42.7 D19-135E6  
+0+00 D19-135E6A
- 14 EOL 20+70 D19-135E6
- 15 EOL 7+00 D19-135E7  
+EOL 4+50 D19-135E4
- 16 23+26.8 D19-135E  
+0+00 D19-135E7
- 17 25+61.4 D19-135E  
+0+00 D19-135E8
- 18 BURIED PIPE DRAIN  
R/W 55' N. & 45' S. E.
- 19 N 55° 01' W  
183.9'
- 20 EOL 22+50  
D19-135C3

- 21 BURIED PIPE DRAIN (D19-135E)  
R/W 55' W. & 45' E. E. TO STA. 6+86.4  
R/W 45' N. & 55' S. E. STA. 6+86.4 TO 9+64.6  
R/W 55' N. & 45' S. E. STA. 9+64.6 TO 27+21.3  
R/W 45' N. & 55' S. E. STA. 27+21.3 TO END.
- 22 BURIED PIPE DRAIN (D19-135E6)  
R/W 55' W. & 45' E. E. TO STA. 2+42.7  
R/W 55' N. & 45' S. E. STA. 2+42.7 TO 12+83.8  
R/W 45' N. & 55' S. E. STA. 12+83.8 TO END.
- 23 BURIED PIPE DRAIN  
R/W 65' N. & 55' S. E.
- 24 BURIED PIPE DRAIN  
R/W 45' N. & 55' S. E.

- 1 0+00 D15-1B  
+5+40.4 D15-1  
+0+00 D15-1A
- 2 0+00 D15-1D  
+7+80.4 D15-1  
+0+00 D15-1C
- 3 0+00 D15-1F  
+10+20.4 D15-1  
+0+00 D15-1E
- 4 12+30.4 D15-1  
+0+00 D15-1G
- 5 2+00.0 D15-1F  
+0+00 D15-1F1
- 6 EQU 56+17.4 BK. 56+03.6 AM.  
+0+00 D19-190A19
- 7 BURIED PIPE DRAIN (D19-190A)  
R/W 45' N. & 55' S. E. STA. 51+45 TO 71+00.5  
R/W 55' N. & 45' S. E. STA. 71+00.5 TO 85+22.5  
R/W TO LAT. W. & 70' E. E. STA. 85+22.5 TO 87+06.4  
R/W 65' N. & 70' E. E. STA. 87+25.6 AM. TO END.
- 8 62+24.4 D19-190A  
+0+00 D19-190A21
- 9 BURIED PIPE DRAIN  
R/W 45' W. & 55' E. E.
- 10 BURIED PIPE DRAIN (D19-190A23)  
R/W 45' N. & 55' S. E. TO STA. 3+77.4  
R/W 65' N. & 70' E. E. STA. 3+77.4 TO END.



SCALE OF FEET  
400 3 2 1 0 2 4 6 800

LEGEND

- Boundaries of Units
- Rights of Way for Roads
- ..... Rights of Way for Canals
- · - · - Rights of Way for Drains
- Rights of Way for Proposed Roads

REV. TO 10-20-78	de
REV. TO 12-28-73	de
REV. TO 7-31-68	C.M.
REV. TO 7-29-66	C.M.

Drawn H.M.R.  
Checked J.L.R.  
Surveys certified  
A. J. Davidson  
Chief Engineer of D. & C. Div. (Act.)  
DATE 10-6-59

I certify that this is Sheet  
1 of 20 Supplemental Sheets  
of the Sixth Revision of the  
Final Farm Unit Plat of  
Irrigation Block 15.  
M. Boyd Austin  
Regional Director (Act.)  
DATE 10-9-59