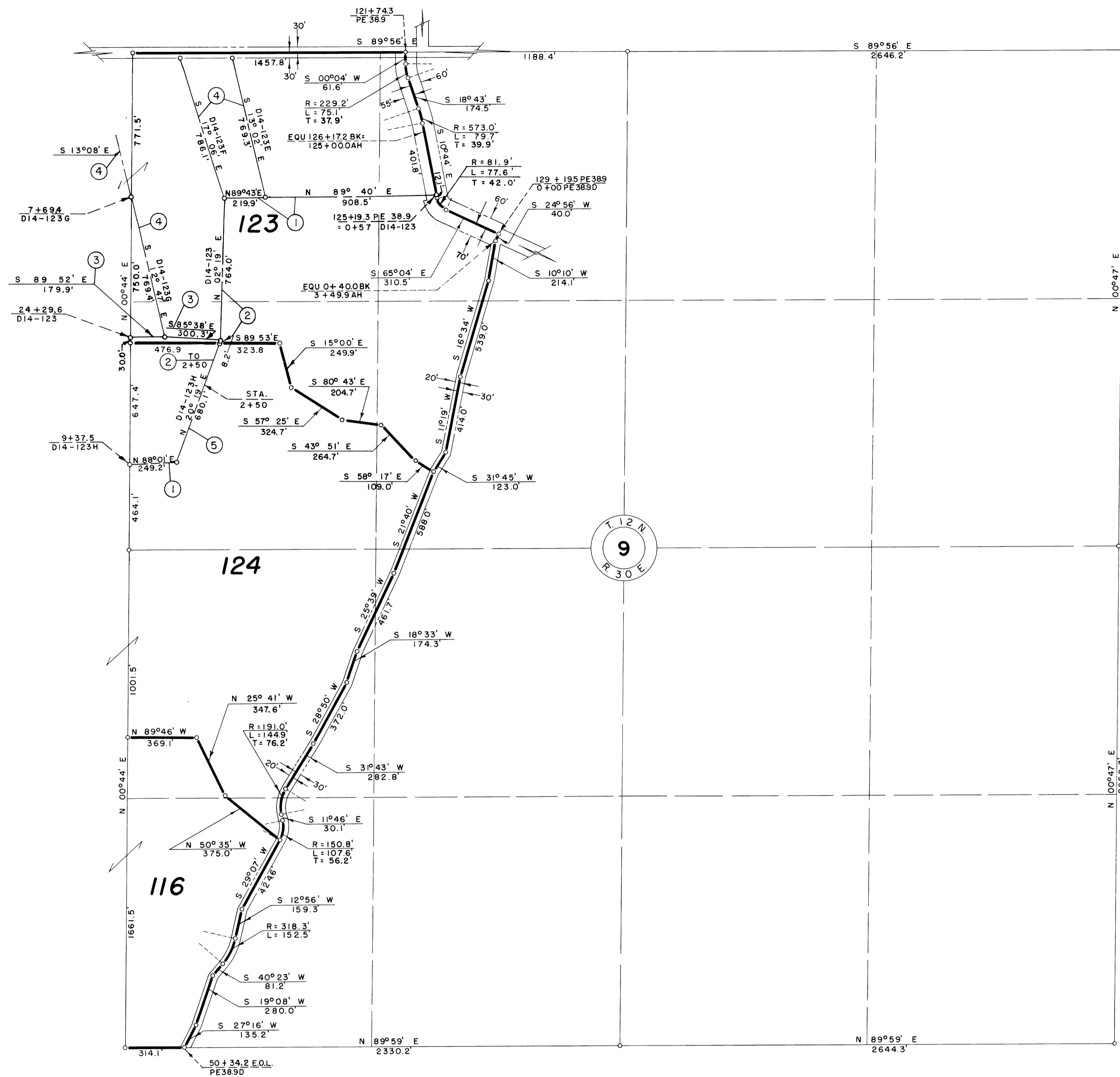


NOTE: Buried Pipe Drain R/W

- ① 55' N. & 45' S.
- ② 55' W. & 45' E.
- ③ 75' N. & 65' S.
- ④ 45' W. & 55' E.
- ⑤ 75' W. & 65' E.



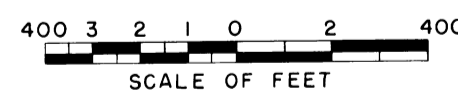
14

13-13

Drawn H.M.R.
 Checked J.L.R.-J.E.G.
 Surveys certified

J.D. Humes
 Chief, Engr. Div. of D. & C. Div.

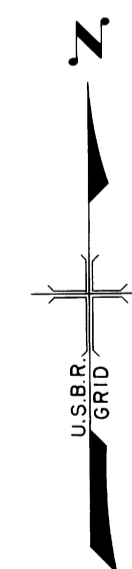
DATE 1-7-58



LEGEND

- Boundary of Farm Unit
- ==== Right of Way for Road
- ==== Right of Way for Canal
- ==== Right of Way for Drain
- ==== Right of Way for Proposed Road

124 Farm Unit Number



REV. TO	- -	de
REV. TO	4-9-75	de

I certify that this is Sheet
 6 of 20 Supplemental Sheets
 of the Third Revision
 of the Final Farm Unit Plat
 of Irrigation Block 14.

Wm. H. Tuller
 Regional Director (Act.)

DATE 1-22-58