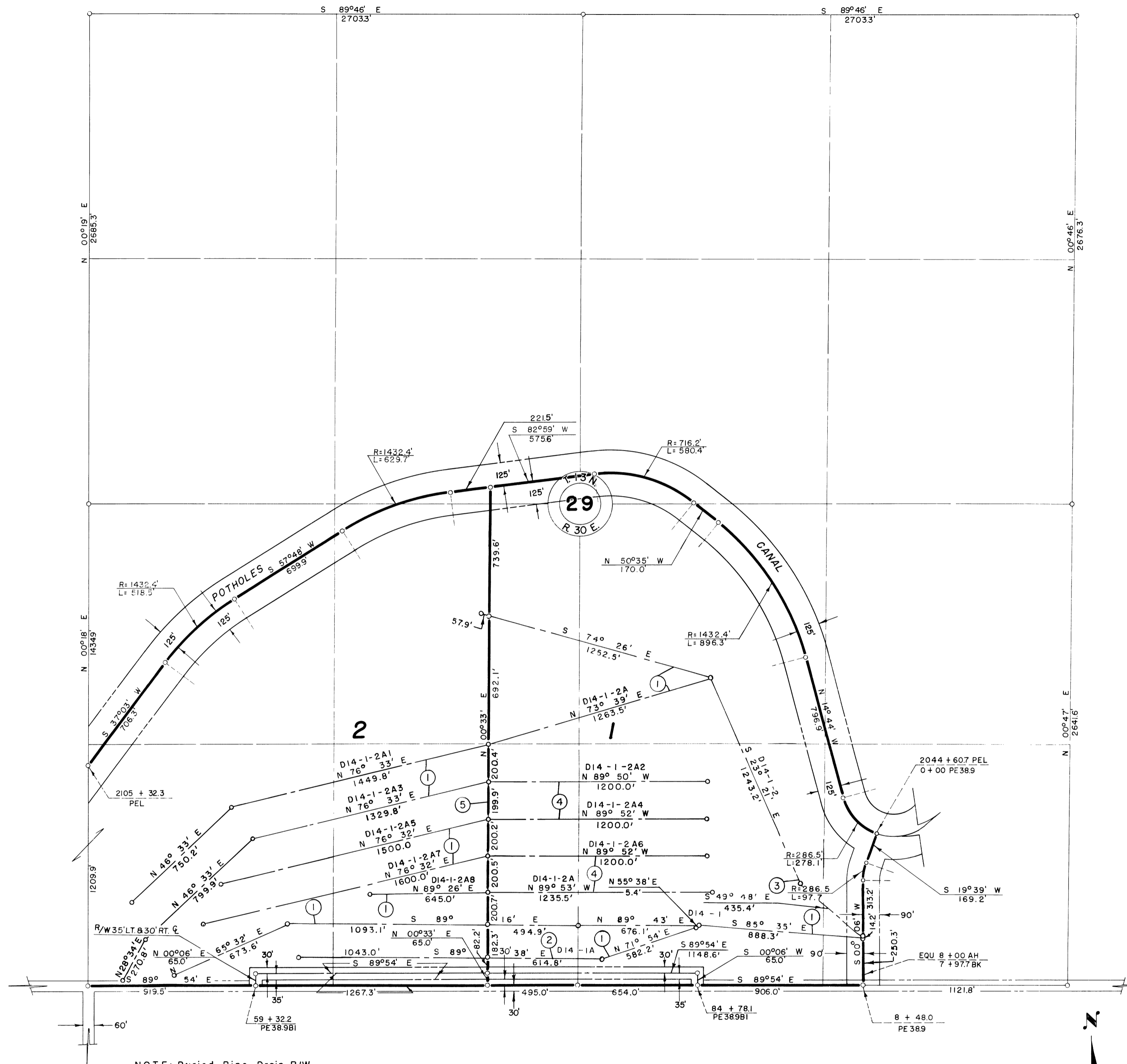
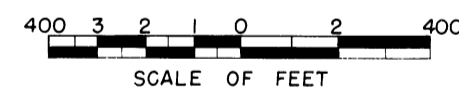


12-7

5

12-8



Drawn F.E.H.
 Checked E.H.S.-J.E.G.-J.L.R.
 Surveys certified
J.D. Humes
 Chief, Engr. Div. of D. & C. Div.

DATE 8/2/54

NOTE: Buried Pipe Drain R/W

- ① 45' N. & 55' S.
- ② 45' N. & TO LAT. S.
- ③ 55' W. & 45' E.
- ④ 55' N. & 45' S.
- ⑤ 45' W. & 55' E.

LEGEND

- Boundary of Farm Unit
- Right of Way for Road
- Right of Way for Canal
- Right of Way for Drain
- Right of Way for Proposed Road

2 Farm Unit Number

REV. TO 12-31-85	ds
REV. TO 7-7-77	dc

I certify that this is Sheet
 2 of 24 Supplemental Sheets
 of the ~~Revision~~
 of the Final Farm Unit Plot
 of Irrigation Block 14.

Wm. H. Tuller
 Regional Director (Act.)
 DATE 9/2/54