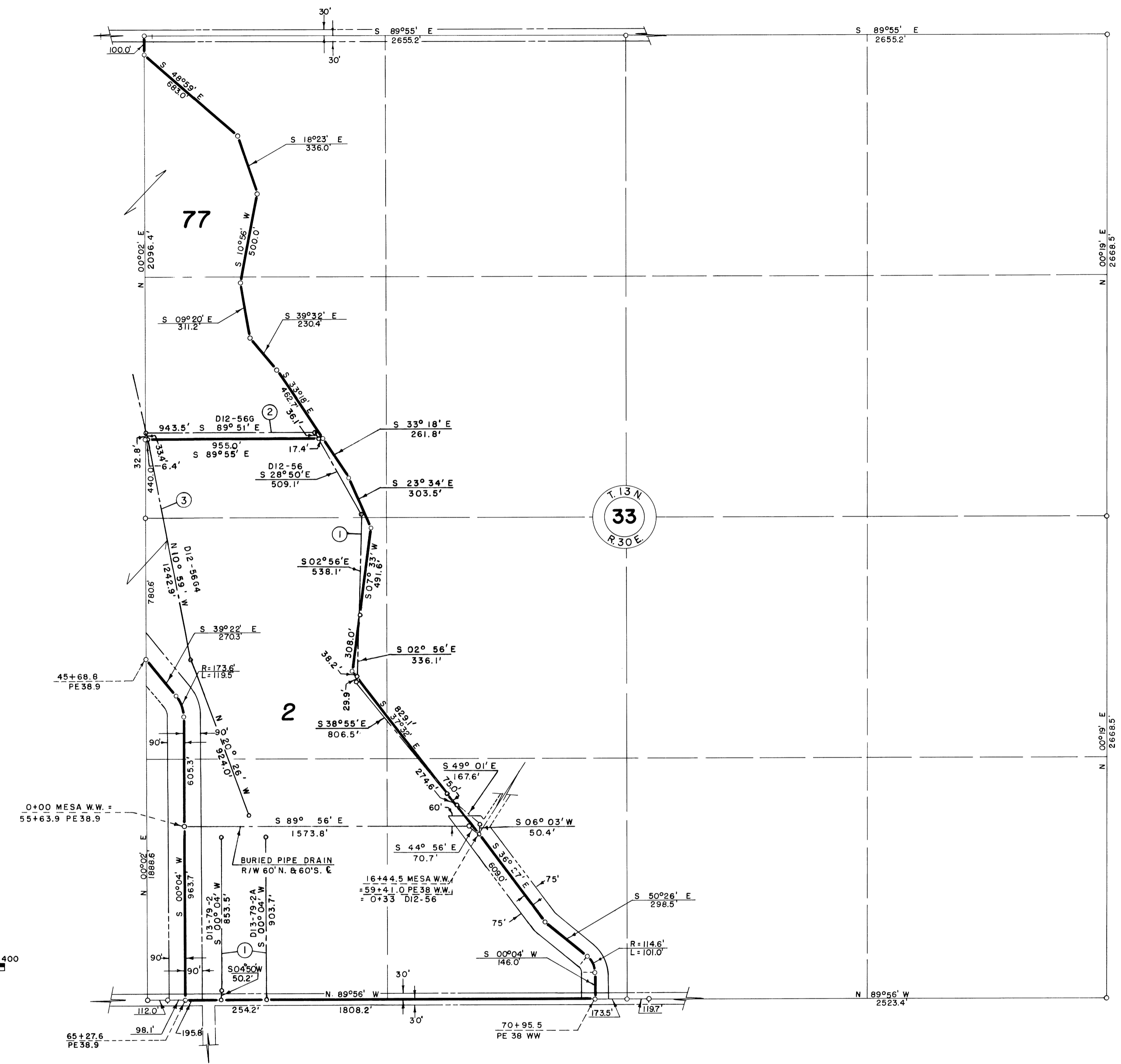


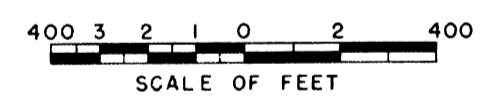
7

14-7



NOTE: Buried Pipe Drain R/W

- ① 55' W. & 45' E.
- ② 55' S. & 45' N.
- ③ 45' W. & 55' E.



Drawn F.E.H.  
 Checked J.L.R.-M.W.C.-J.E.G.  
 Surveys certified  
A.J. Davidson  
 Chief Eng. Div. of D.F.C. Div. (Act.)

DATE 8/31/54

LEGEND

- Right of Way for Road
- ..... Right of Way for Proposed Road
- Boundary of Farm Unit
- . - . - . Right of Way for Canal
- Right of Way for Drain

1 Farm Unit Number

REV. TO 12-30-	
REV. TO 12-15-86	dc
REV. TO 1-26-79	dc

I certify that this is Sheet  
 2 of 6 Supplemental Sheets  
 of the First Revision of the  
 Final Farm Unit Plat of  
 Irrigation Block 13.  
Wm. H. Tuller  
 Regional Director  
 DATE 9/23/54

12-9