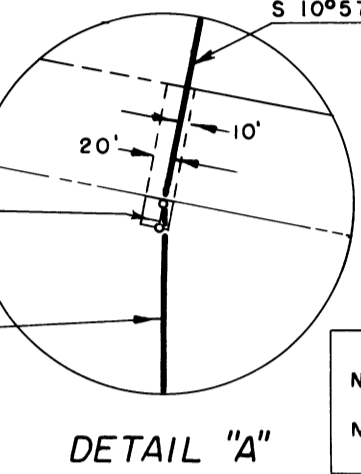
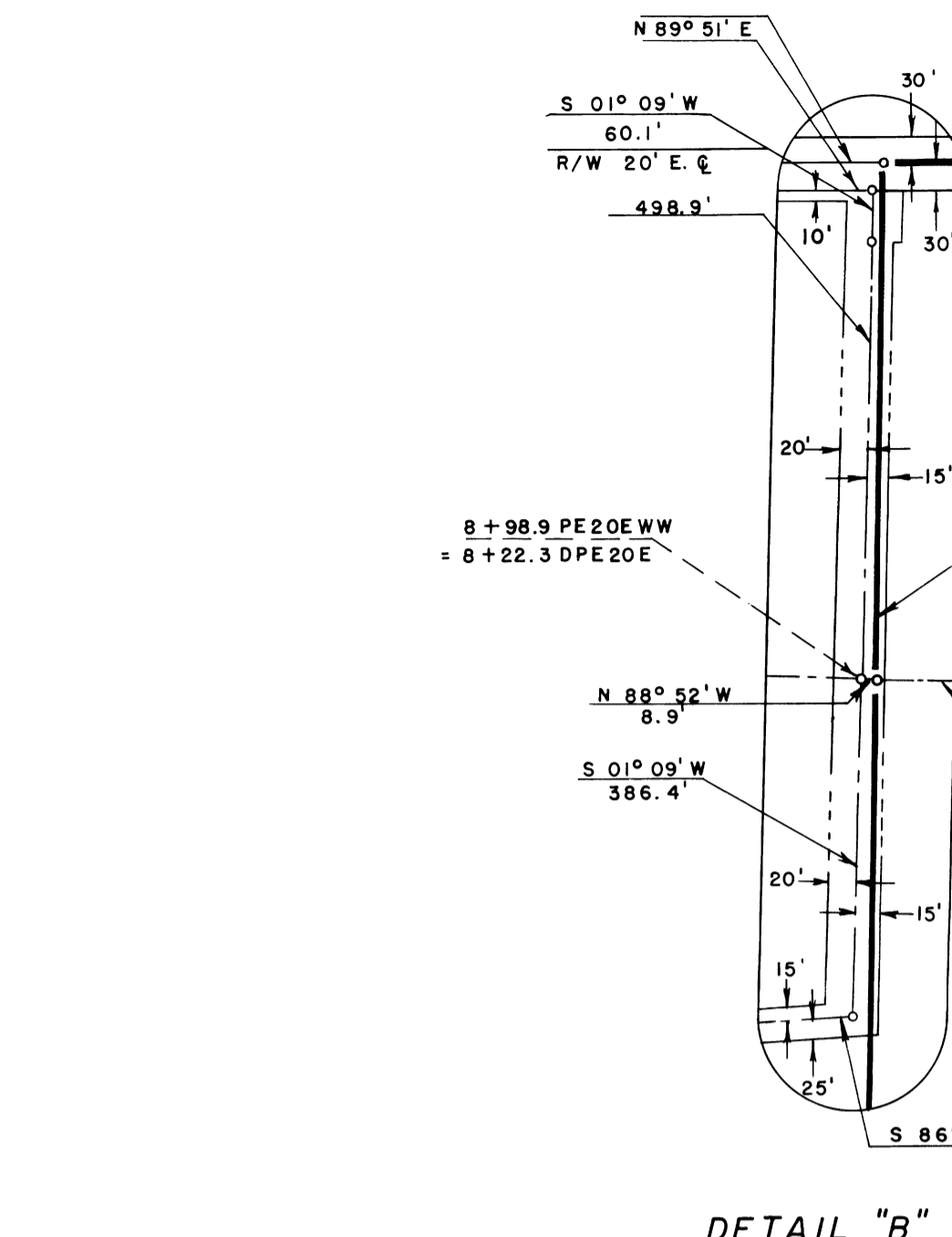
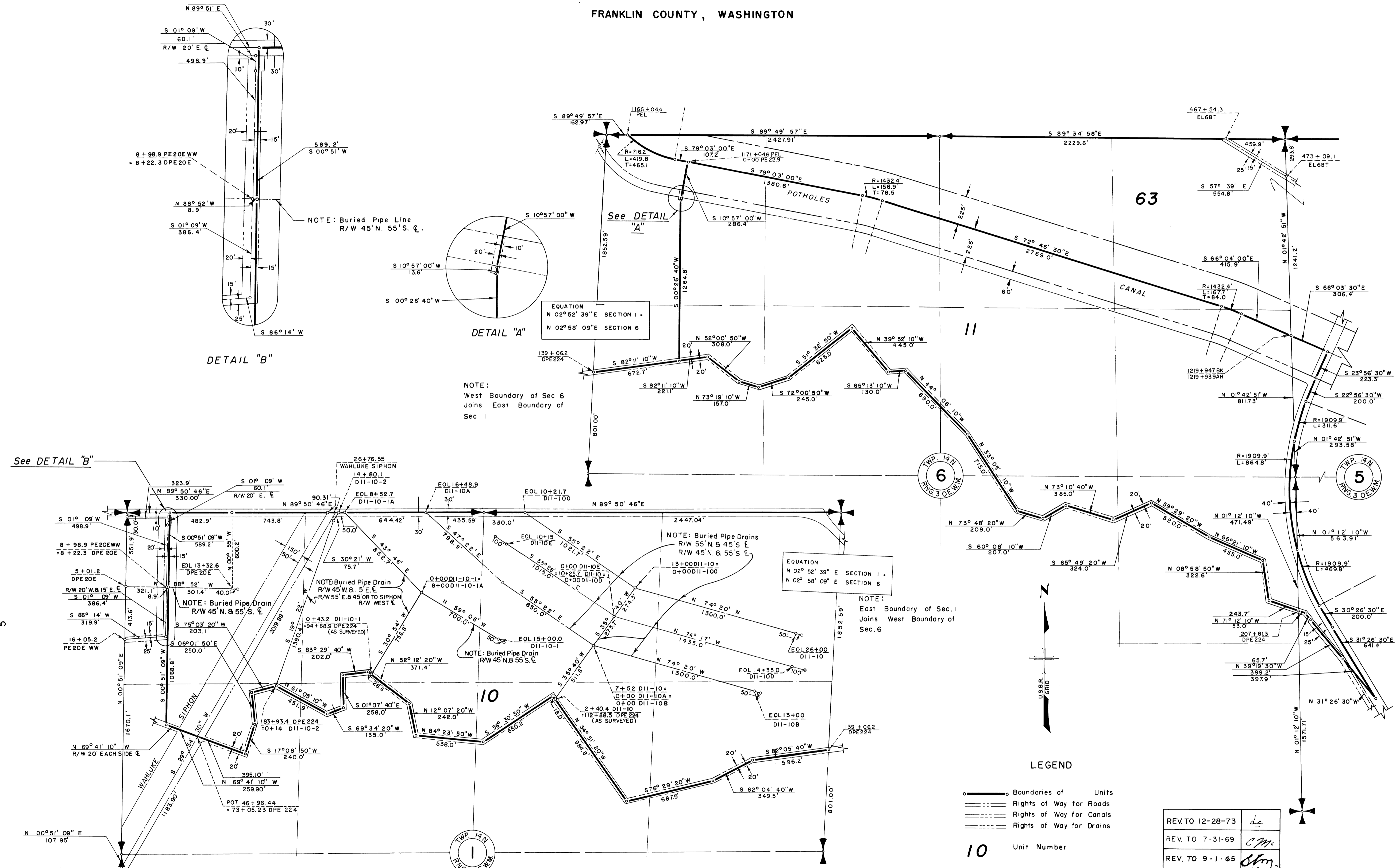


COLUMBIA BASIN PROJECT - IRRIGATION BLOCK II FRANKLIN COUNTY, WASHINGTON



EQUATION
N 02° 52' 39" E SECTION 1 =
N 02° 58' 09" E SECTION 6

NOTE:
West Boundary of Sec 6
Joins East Boundary of
Sec 1

EQUATION
N 02° 52' 39" E SECTION 1 =
N 02° 58' 09" E SECTION 6

NOTE:
East Boundary of Sec. 1
Joins West Boundary of
Sec. 6

NOTE: Buried Pipe Drain
R/W 45' W. & 5' E.
R/W 55' E. & 45' OR TO SIPHON
R/W WEST E.

NOTE: Buried Pipe Drain
R/W 45' N. & 55' S. E.

NOTE: Buried Pipe Drain
R/W 45' N. & 55' S. E.

NOTE: Buried Pipe Drain
R/W 45' N. & 55' S. E.

NOTE: Buried Pipe Drain
R/W 45' N. & 55' S. E.

NOTE: Buried Pipe Drain
R/W 45' N. & 55' S. E.

NOTE: Buried Pipe Drain
R/W 45' N. & 55' S. E.

NOTE: Buried Pipe Drain
R/W 45' N. & 55' S. E.

NOTE: Buried Pipe Drain
R/W 45' N. & 55' S. E.

NOTE: Buried Pipe Drain
R/W 45' N. & 55' S. E.

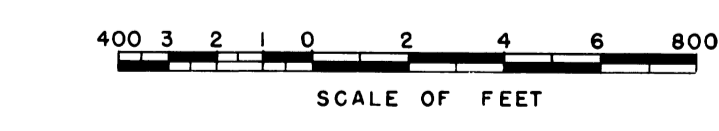
NOTE: Buried Pipe Drain
R/W 45' N. & 55' S. E.

LEGEND

- Boundaries of Units
- Rights of Way for Roads
- Rights of Way for Canals
- Rights of Way for Drains

10 Unit Number

REV. TO 12-28-73	<i>de</i>
REV. TO 7-31-69	<i>CM</i>
REV. TO 9-1-65	<i>SKM</i>



Drawn J.L.R.
Checked J.R.O.-C.L.R.
Surveys certified

A.J. DAVIDSON
Chief, Engr. Div.

DATE 6-13-62

I certify that this is Sheet
3 of 7 Supplemental Sheets
of the Third Revision of
the Final Farm Unit Plat of
Irrigation Block II.
M.B. AUSTIN
Regional Director (Acting)
DATE 7-6-62

THIS SHEET NOT RECORDED