

These comments are taken from the EIR.

**LAND USE**

Purpose of state parks shall be to preserve outstanding natural, scenic, and cultural values, indigenous aquatic and terrestrial fauna and flora.

Each state park shall be managed as a composite whole in order to restore, protect, and maintain its native environmental complexes to the extent compatible with the primary purpose for which the park was established.

Improvements undertaken within state parks shall be for the purpose of making the areas available for public enjoyment and education in a manner consistent with the preservation of natural, scenic, cultural, and ecological values for present and future generations.

Improvements may be undertaken to provide for recreational activities including, but not limited to camping, picnicking, sightseeing, nature study, hiking, and horseback riding, so long as those improvements involve no major modifications of lands, forests, or waters.

Improvements that do not directly enhance the public's enjoyment of the natural, scenic, cultural, or ecological values of the resource, which are attractions in themselves, or which are otherwise available to the public within a reasonable distance outside the park, shall not be undertaken within state parks.

**TRPA**

Areas of significant resource value or ecological importance within the Plan Area should be designated as natural areas, and they should be buffered from intensive uses.

1179-1

Washoe Meadows State Park includes a variety of resources: wet meadow, Jeffrey pine, lodgepole pine, Native American occupancy sites, and remnants of a historic dairy.

Relocation of the golf course holes would not be consistent with the purpose of WMSP.

ALT 3 would reduce the size of the golf course footprint and increase the area of restored riparian area. The boundary of WMSP would be adjusted (expanded) to encompass all of the restored river and riparian corridor.

ALT 2 There would be a slight increase in total revenue.

ALT 3 Any decrease in revenue would not be sufficient to alter the balance between economic health and the environment.

ALT 3 would decrease golf landscape adjacent to the river and decrease irrigation and fertilizer use.

ALT 3 would establish a more geomorphically functioning channel that allows for improved groundwater recharge, nutrient catchment, and wildlife habitats.

ALT 2 Relocating golf course holes would remove and fragment upland habitat and slightly increase disturbance levels west of the Upper Truckee River.

ALT 3 Increase the area of WMSP available for low-density use.

## **HUMAN HEALTH AND RISK OF UPSET**

ALT 2 The increase in human presence during the fire season could result in an increased risk of fire.

ALT 2 would increase the golf course footprint.

ALT 3 would reduce the size of the golf course footprint reducing human presence in the area, thus reducing fire risk.

## **EARTH RESOURCES**

Alternative 2 would involve modifications where shallow groundwater occurs and where tree removal would be extensive. Tree removal could cause instability in soils.

Under Alternative 2, 150,659 sf of coverage is proposed in LCD 5, including cart paths, designated trails, the restroom facility, some of the parking improvements, as well as other existing coverage that would not be modified. This is an increase in coverage by 10,730 sf.

Under Alternative 3, 351,094 sf of coverage is proposed in LCD 1b, including cart paths, designated trails, as well as other existing coverage that would not be modified. This is a decrease of 65,259 sf from existing coverage within LCD 1b.

Coverage allowed within LCD 5 in the study area is 1,528,676 sf. Under Alternative 3, 121,231 sf of coverage is proposed in LCD 5, including cart paths as well as other existing coverage that would not be modified. This is decrease in coverage by 18,698 sf.

Grading would be in excess of 5 feet in some locations within the project area.

## **RECREATION**

Facility use data show a trend of declining number of rounds played over the 4-year period.

A total of 322 complete surveys were collected during the 2-year period. The surveys represent responses from less than 1 percent of the total golfer population.

The footprint of the golf course in Alternative 2 would be 156 acres versus the existing 133-acre footprint. Alternative 2 would affect all or large portions of Recreation Use Zones 1A, 1B, 4, 5, 6, 7A, and 7B (Exhibit 3.8- 1). Combined, these zones accommodate approximately 71 percent of all recreation use that currently occurs in Washoe Meadows SP. More specifically, these zones accommodate 82 percent of hiking/walking, 63 percent of biking, 76 percent of jogging, and 51 percent of equestrian use that occurs in Washoe Meadows SP.

1179-1  
cont.



The economic feasibility analysis indicated that the survey respondents were likely to have been biased regarding proposed changes to be made to the golf course; a reduced-play golf course would likely appeal to a different group of golfers.

Alt 3 A designated and maintained pedestrian trail would be established along the northern edge of the proposed reduced-play golf course. This designated trail would run from U.S. 50 just north of the golf course entrance to Country Club Drive, with a tie-in to the Sawmill Bike Trail and would create approximately 1 mile of new trail.

By providing trail access along the Upper Truckee River, in areas which were formerly occupied by golf course fishing access would be improved by Alternative 3.

Golfers at the scoping workshops asked to have a return 9 golf course. The new course would not be a return 9. If the restaurant loses business because of this, will the concessionaire be allowed to build a building for snacks on the west side of the river?

### HIGHLIGHTS

#### ALT 2

Fragment upland habitat.

Increase fire danger due to increased human presence.

Increase golf footprint. Increased coverage of 10,730 sf in LCD5. 156 acres, 23 more than current acreage.

Extensive tree removal could cause instability of soils.

Green fees may increase if deemed necessary by concessionaire.

Facility use data shows a trend of decline in number of rounds played over 4 year survey.

Survey of golfers represents only 1 percent of golfing population.

Results of golfer survey were likely biased because of proposed changes to golf course.

Reduced golf course will appeal to a different group of golfers.

LTGC is within 60 minute drive of 8 other competitive golf courses.

Moving golf course to west side will affect 71 percent of current recreational activities in WMSP.

Moving golf to west side will result in substantial scenic changes especially to WMSP.

97 acres of floodplain and meadow restored. 37 acres of SEZ restored.

Sensitive plant areas would likely be affected.

1640 trees would be removed.

#### ALT 3

Decrease golf landscape adjacent to the river, and decrease irrigation and fertilizer use.

Increase area for low-density use.

Decrease of coverage of 62,259 sf in LCD16. Decrease in coverage of 18,698 sf in LCD5.

A new 1 mile trail with tie-in to Sawmill Bike Trail.

Fishing access would increase.

Minor changes to scenic views on east side.

112 acres of floodplain and meadows restored. 43 acres of SEZ restored.

Sensitive plant areas would not be disturbed.

Animal habitat in the upland area would not be disturbed.

1179-1  
cont

## COMMENTS

### Economics

In the LAKE TAHOE GOLF COURSE ECONOMIC FEASIBILITY ANALYSIS tables A-1 to A-4 show a mostly declining gross revenue for the golf course since the year 2000. This corresponds with the decline of interest in golf nationally.

[http://www.nytimes.com/2008/02/21/nvregion/21golf.html?pagewanted=2&\\_r=1&ei=5087&em&en=7cd9bca9ea006609&ex=1204347600](http://www.nytimes.com/2008/02/21/nvregion/21golf.html?pagewanted=2&_r=1&ei=5087&em&en=7cd9bca9ea006609&ex=1204347600)

Tables D-2, D-3, and D-8 regarding estimated spending by visitors and golfers are based on North Lake Tahoe figures, two very different economies.

<http://www.restoreuppertruckee.net/full-econ-rpt8-8-08.pdf>

Since 1989, the Lake Tahoe Golf Course has been operated by American Golf Corporation under a concessionaire contract with State Parks. This represents the fifth largest source of concession revenue in the State Parks system. (Not the fifth largest source of revenue, as has been stated on several occasions).

Alternative 2 would therefore have an overall minor, but beneficial economic effect on the community of South Lake Tahoe.

Implementing Alternative 3 is not expected to result in significant impacts on population, employment, or housing on either a localized or a regional basis. The impact would be less than significant.

Real estate prices in the area of the study have gone down since the NOP was declared (3-5% on top of the decline in prices from the real estate downturn according to our real estate broker of 30 years. This is because people want to buy property that backs to forest, not a golf course in this area). As soon as construction starts they will probably drop more. This erodes the county's tax base. Also, as more residents leave and houses are purchased by second home owners, there will be fewer patients, clients, and customers for doctors, dentists, Barton Memorial Hospital, lawyers, accountants, restaurants and retail stores. This also means less sales tax collected in the city and for the state.

1179-2

The Lake Tahoe Golf Course averages 76 full- and part-time employees, the majority of whom are employed in food and beverage service jobs. (EIR – Socioeconomics 3.15-7)

Golfers are estimated to generate 168 full- and part-time jobs associated with employment to service visitor needs. Of these jobs, 76 are at the Lake Tahoe Golf Course and 92 are elsewhere in the South Lake Tahoe area. (EIR-Socioeconomics 3.15-9)

People employed in the seasonal service industry and retail workforce generally worked in lower wage jobs. (EIR – Socioeconomics 3.15-13)

Alternative 3 - It is estimated that 29-55 jobs (11-16 of which are at the Lake Tahoe Golf Course) would be removed from the local economy. (EIR – Socioeconomics 3.15-16)

Implementing Alternative 3 is not expected to result in significant impacts on population, employment, or housing on either a localized or a regional basis. The impact would be less than significant. (EIR – Socioeconomics 3.15-17)



Chapter 5 TRPA2001 Threshold evaluation: "The two primary results of the large amount of public ownership within the Region are that forestland is managed for noneconomic goals, and uncommon plant communities and sensitive plants are afforded greater protection."

**REGIONAL PLAN FOR THE LAKE TAHOE BASIN – MEYERS COMMUNITY PLAN**

2. California Park Service. The Park Service is expected to continue as a partner in developing the permanent Meyers Visitors Center. They intend to prepare a general plan for the Washoe Meadows State Park. The plan will recommend developing a trail connection from their boundary near U.S. 50 and the Upper Truckee River into the park. It may investigate the potential to add an undercrossing of U.S. 50 to reach the Visitors Center.

CHAPTER 5 – RECREATION ELEMENT 5-3

If a visitor center/museum was developed, it could provide an educational element connected to the park. A fee could be charged for the museum, along with sales for books, clothing, maps, etc. Information about the history of the area, natural resources, explanation about how a river is restored, and information about fens could be included. Signs within the park would reinforce the information provided at the center. Discounts could also be provided to the restaurant at the golf course to bring more people into the restaurant.

1179-3

Opinion -

A golf course will not save the economy of South Lake Tahoe. Only creating jobs that bring back professional, middle class families will make this a vibrant community again.

American Golf Corporation owns several 9 hole and executive 18 hole courses which seem to be profitable.

<http://www.americangolf.com/>

If the event center and restaurant were expanded and promoted perhaps no jobs would be lost at the golf course with Alternative 3.

**Displacement of housing or people** – No alternative would involve actions that would displace people or housing or otherwise alter the location, distribution, or density of the planned human population. (EIR – Socioeconomics – 3.15-12)

1179-4

Challenge-

Although the golf course will not physically displace housing, it will displace the residents who do not wish to be neighbors of a golf course.

**Biological Resources**

The adopted TRPA thresholds for vegetation, wildlife, and fisheries are listed below, and Table 3.5-1 summarizes the 2006 attainment status for these thresholds (TRPA 2007).

**Vegetation vs. Recreation Thresholds**

Broader protections for *Special-*

*Status Plant Species* and uncommon plant communities (*Plant Communities of Concern*) could result in more limited recreation access in certain areas, impeding ability to meet recreational development standards. Most recreational uses are not limited to a specific location and can be constructed or relocated or operated differently without reducing recreational capacity substantially. Therefore, this impact is not significant. Environmental Assessment for Threshold Updates (7-63)

1179-5

Alternative 2 proposes to avoid direct effects on spring complexes by designing the layout of the golf course around or away from these areas and by including a protective buffer. Because the design of the golf course holes is conceptual and not finalized, potential for the final design, construction, and operation of these holes to inadvertently degrade this sensitive biological resource exists without more specific design parameters and measures to avoid direct or indirect effects on the spring complexes. (EIR- Biological resources 3.5-70)

Because the likelihood and magnitude of the potential effects on the spring complex hydrology are presently unknown and Alternative 2 would result in disturbance within SEZ and jurisdictional wetland, this impact is considered significant. (EIR - Biological Resources 3.5-71)

The quarry restoration would require some disturbance to the existing wetlands, including hydrologic changes and vegetation disturbance. The existing disturbed wetland on the pit floor, which would be restored under Alternative 2, is hydrologically connected to and receives drainage from the large fen to the west via a small rivulet as well as being fed by groundwater. Although Alternative 2 proposes to avoid the fen, wetland restoration and drainage reconfiguration in the quarry could inadvertently alter the groundwater or surface water hydrology and availability for the fen upslope. A risk would exist that drainage from the fen could potentially increase and cause the fen to become drier if landscape alteration downslope of the fen modifies groundwater flow. Because the proposed restoration in the quarry is conceptual, the specific potential for and magnitude of this effect cannot presently be known. (EIR - Biological Resources 3.5-70)

Because the design of the golf course holes is conceptual and not finalized, potential for the final design, construction, and operation of these holes to inadvertently degrade this sensitive biological resource exists without more specific design parameters and measures to avoid direct or indirect effects on the spring complexes. (EIR - Biological Resources 3.5-70)

The fairways, tees and greens are the mostly intensely managed and highly manicured golf landscape comprised of non-native vegetation such as bluegrass and bentgrass. These areas are irrigated, fertilized, and mowed to a short length. The rough, driving range, and lawn areas are irrigated and mowed, although not mowed as closely as the other areas, and not fertilized regularly. (EIR - Project Alternatives 2-23)

"Fens, are peat-forming wetlands that receive nutrients from sources other than precipitation: usually from upslope sources through drainage from surrounding mineral soils and from groundwater movement. Fens differ from bogs because they are less acidic and have higher nutrient levels. They are therefore able to support a much more diverse plant and animal community. These systems are often covered by grasses, sedges, rushes, and wildflowers. Some fens are characterized by parallel ridges of vegetation separated by less productive hollows. The ridges of these patterned fens form perpendicular to the downslope direction of water movement. Over time, peat may build up and separate the fen from its groundwater supply. When this happens, the fen receives fewer nutrients and may become a bog.

**Functions & Values** Fens, like bogs, provide important benefits in a watershed, including preventing or reducing the risk of floods, improving water quality, and providing habitat for unique plant and animal communities.

1179-6



Because of the large historical loss of this ecosystem type, remaining fens are that much more rare, and it is crucial to protect them. It is important to recognize that while mining and draining these ecosystems provide resources for people, up to 10,000 years are required to form a fen naturally."

<http://water.epa.gov/type/wetlands/fen.cfm>

"Fens also are threatened by current and past resource use affecting watersheds in the Sierra Nevada such as grazing and trampling, timber harvest, road building, water pumping, and water pollution. Any condition or activity that disturbs the hydrology or temperature of a fen, causing drying or warming, is a threat to the function of that fen. The semi-arid landscape of California makes these systems especially vulnerable to regional climatic warming and drying. The SNFPA (USFS, 2001) identified five major threats to the Bog and Fen Guild, including hydrologic alteration, mechanical treatments, stock trampling, roads, and off-road vehicles."

[http://cis.fs.fed.us/psw/partnerships/tahoescience/documents/p059\\_Evens\\_OK\\_redact.pdf](http://cis.fs.fed.us/psw/partnerships/tahoescience/documents/p059_Evens_OK_redact.pdf)

Due to the massive cutting of trees, does anyone know what effect the lack of shade will have on the fens and spring complexes?

#### Three rare plants found in WMSP.

1. *Eriophorum gracile*  
[More information: Tessa Online Interchange](#)
2. *Utricularia minor*
3. *Carex limosa*

Please cite data retrieved from this page: Data provided by the participants of the Consortium of California Herbaria ([ucjeps.berkeley.edu/consortium/](http://ucjeps.berkeley.edu/consortium/)).



UC Davis

"The Tahoe Basin is particularly vulnerable to the loss of biotic diversity because of its topography and geography. Lake Tahoe sits in an isolated montane basin with a broad elevational range; as such, it supports narrow bands of three distinct life zones nested within a relatively small geographic area. Development is most prevalent near the lake, therefore species restricted to the lower montane zone adjacent to the lake (under 7,500 feet) are particularly vulnerable to the direct and cumulative impacts of urbanization.

Urbanization can alter the biodiversity of native forest habitat at both site and landscape scales, such as decreasing the richness of native species, losing vulnerable species (such as habitat specialists, dietary specialists and large-bodied species), and increasing generalist and exotic species ([Hansen et al. 2005](#)).

1179-6  
cont.

1179-7

1179-8

Birds showed the strongest response to development. Species that frequently cohabit with humans such as the house finch and Steller's jay, responded well to development while less-abundant species like the pileated woodpecker declined. (I have seen a pair of pileated woodpeckers in WMSP).

Most of the bird species that showed a strong negative response to development were associated with older forests and/or forest understories, suggesting that vertical complexity and understory conditions are important factors that determine the diversity of land bird communities; human disturbance and increased predation may also be contributing factors.

Our observations suggest that the effects of development on biotic diversity may not be linear, but rather that certain significant shifts in species composition and abundances occur at lower levels of development. Accordingly, this may be an opportune time to evaluate the risks, opportunities and consequences of various land-use planning options to the conservation of biotic diversity in the Lake Tahoe Basin."

<http://californiaagriculture.ucanr.org/landingpage.cfm?article=ca.v060n02p59&fulltext=yes>

Alternatives 1, 3, and 5 would improve wildlife habitat by establishing a more geomorphically functioning channel and improve riparian corridor. By taking most golf course uses away from the river will also allow for improved access to the river. (EIR – Land use 3.2-32)

Washoe Meadows SP composes a large block of open space, positioned between Angora Ridge and the south Upper Truckee River watershed. The mix of forest, meadow, and riparian habitat in this block of open space, within the context of the larger complex of open space or low-density development to the north and south of the study area, provides a habitat link within the Upper Truckee watershed and the Tahoe Basin. (EIR – Biological Resources 3.5-55) My husband and I have seen bears, coyotes, raccoons, porcupines, hares, and deer travel through this area. We have also observed many bird species, including osprey.

Alt 2 All trees would be removed from proposed tees, greens, and fairways; approximately 80 percent of trees located in the proposed rough would be removed. Approximately 45 acres mapped as Jeffrey pine and lodgepole pine would be removed to develop the relocated golf holes.

Under Alternative 2, an estimated total of 1,640 trees greater than 10 inches DBH would be removed, including 1,395 trees for golf course relocation, 120 trees for geomorphic restoration, and 125 trees for access road construction. This estimate includes three trees greater than 30 inches DBH, with at least one tree greater than 30 inches DBH within the proposed golf course footprint and two trees greater than 30 inches DBH that would be removed for geomorphic restoration.

The magnitude of estimated tree removal (1,640 native trees greater than 10 inches DBH) under Alternative 2 would be substantial as defined by TRPA, and approximately three trees greater than 30 inches DBH would be removed. This impact would be significant. (EIR – Biological Resources 3.5-75-3.5-76)

The relocated golf holes on the west side of the Upper Truckee River could provide a new source of nonnative plant and invasive weed populations in Washoe Meadows SP that could colonize native vegetation nearby. (EIR – Biological Resources 3.5-79)

1179-B  
cont.

1179-9



The weed management plan implemented by the golf course as part of its routine maintenance would prevent the spread of weeds from areas within the existing golf course that would remain golf course under Alternative 2. (EIR – Biological Resources 3.5-80) What is the weed management plan? Does it include the use of herbicides which could harm sensitive plants in the area?

Several common resident and migratory wildlife species (described in Section 3.5.1, “Affected Environment”) use habitats in the proposed golf course relocation area for foraging, shelter, and breeding. Regionally and locally common wildlife species would be subject to the loss of habitat and increased localized habitat fragmentation. Habitat loss and fragmentation could result in the reduction of population sizes and diminished use of the study area by some local wildlife populations.

Regionally and locally common wildlife species would also be disturbed by operation of the golf course through increased and regular human intrusion in the area between the Upper Truckee River and the neighborhoods to the south and west. Increased recreational use of this area would further reduce the habitat value for wildlife.

(EIR – Biological Resources 3.5-87)

Under Alternative 3, incompatible land uses associated with the golf course would be removed from areas adjacent to the Upper Truckee River and Angora Creek, and adjoining riparian vegetation communities would be restored.

Approximately 112 acres of floodplain and meadow would be restored. The golf course’s footprint would be reduced to 86 acres, reducing the amount of SEZ occupied by the golf course by 43 acres. A net total of 43 acres of SEZ would be restored.

No construction disturbance related to golf course reconfiguration, quarry restoration, or trail development would occur on the west side of the Upper Truckee River under this alternative; therefore, spring complexes (including fens) and other sensitive habitats west of the Upper Truckee River riparian corridor and floodplain would not be affected. (EIR – Biological Resources 3.5-93)

#### Noise

Due to the loss of 1640 trees noise from Highway 50, Meyers Elementary School, and Tahoe Paradise Park will increase. Since the last two thinning projects this noise has already increased considerably. Also, noise from the golf course would include groups of people talking, balls being hit, golf carts driving by, and the sounds of sprinklers, lawn mowers and other landscaping equipment.

Lawn mowing typically occurs from early morning until mid to late afternoon, and occasionally into the evening.

Irrigation occurs between the hours of 6:00 p.m. to as late as 10:00 a.m. depending on water needs. Actual quantity of water pumped for irrigation purposes from the Upper Truckee River has not been officially recorded. (EIR – Project Alternatives 2-34)

Trees create a sound barrier. Living close to persistent noise can make you sick. In addition to the possibility of hearing loss, noise has been shown to cause stress, tension and anxiety. If your home is close to a noise source, such as a highway or an industrial complex, planting a “noise buffer” consisting of trees and shrubs can reduce noise by 5 to 10 decibels, effectively reducing the sound by up to 50% to the human ear.

Evergreen trees provide better year-round noise reduction.

<http://www.landsteward.com/page.cfm/42692>

#### Exchange of land

1179-9  
cont.

1179-10

The holes that would be relocated under Alternative 2 would be reconstructed on the west side of the Upper Truckee River within lands currently designated as Washoe Meadows SP. State Recreation Areas and State Parks have different purposes, as defined under Public Resources Code Section 5019, and golf course recreation is better suited to State Recreation Areas rather than State Park designation.

Relocation of the golf course holes would not be consistent with the purpose of Washoe Meadows SP. Alternative 2 would include revising the park unit boundaries, essentially trading land between Washoe Meadows SP and Lake Valley SRA, and realigning the boundaries between the two park units. (EIR – Land Use 3.2-15)

#### LVRSA general plan:

Although pleasant natural areas surround Lake Valley SRA, negative esthetic features disrupt these qualities. The Lake Tahoe Airport lies within one mile northeast of the unit, and airplanes frequently pass overhead. From most portions of the unit, residential areas and/or Highway 50 are visible or heard.

#### Esthetic Resources – p. 32

(a) State recreation areas, consisting of areas selected and developed to provide multiple recreational opportunities to meet other than purely local needs. The areas shall be selected for their having terrain capable of withstanding extensive human impact and for their proximity to large population centers, major routes of travel, or proven recreational resources such as manmade or natural bodies of water. Areas containing ecological, geological, scenic, or cultural resources of significant value shall be preserved within state wildernesses, state reserves, state parks, or natural or cultural preserves.

#### Resource Policy Formulation – Classification – p. 33

The relatively greater suitability of Washoe Meadows for natural interpretation, nature study, hiking, and similar uses, as well as its relative distance from the golf course and highway, are considered in planning for Lake Valley State Recreation Area.

#### Interpretive Element – 2. p. 47

##### 6. Golf course:

The golf course is the most important human impact to be considered. Occupying most of the unit, its construction has changed the topography, vegetation patterns, and animal life, and may have destroyed historical and prehistorical materials. Because of the danger of misdirected golf balls, and the need to keep the course open and free of wandering visitors, golf course activity severely limits alternate uses such as picnicking, birdwatching, nature walks, painting, and photography.

#### Interpretive Element – 6. p. 48

To give their approval to Alternative 2, TRPA will be sending the message to current users of the park that it is okay to get in your car and recreate somewhere else.

#### SCENIC RESOURCES -EIR

Under Alternative 2, golf course holes would be relocated to the west side of the river within Washoe Meadows SP, requiring substantial grading and tree removal. These activities would result in visual changes to both the eastern and western portions of the study area. (p 2.7-28)

1173-10  
cont.

1173-11



The most substantial changes in views under Alternative 2 would occur within Washoe Meadows SP in the western portion of the study area. Within the western portion of the study area, existing views from around and within the study area are primarily of forest, with stands of lodgepole and Jeffrey pine trees. Partial views of the relocated golf course holes may exist through the forested buffers in areas where existing trees are less dense or where existing open areas in the forest are located. Residences that may experience a change in views are located in the North Upper Truckee neighborhood, primarily on Chillicothe Street, Normuk Street, and Delaware Street. (p.3.7-29)

In addition, under Alternative 2, there would be a substantial change in views from existing trails within Washoe Meadows SP. These views would also change from dense forest to more open views and golf course tees, fairways, greens, bunkers, and cart paths in some areas. (p.3.7-29)

Although visual quality is a key design goal for the golf course, this alternative would require substantial grading to modify the terrain for the golf holes, substantial removal of existing trees, and construction of golf facilities in the existing forest. This would result in a substantial change in views from existing trails, and potentially from limited vantage points in adjacent neighborhoods (where the intervening forest buffer is not sufficiently dense to block views). This impact would be significant. (p.3.7-30)

In Washoe Meadows SP much of this area was previously disturbed by a historical quarry, roads, and trails. (EIR 3.2-21)

Other restoration efforts on the west side of the river would involve reconfiguring a portion of the old quarry pit floor that was cut into the hillside and intercepts groundwater. (EIR 3.3-53)

Most of the Lake Tahoe basin has been previously disturbed. To use this as an excuse to tear up more of the land is shameful. Actions have been taken to make the park seem more disturbed than it was. A large pile of dirt from the Angora fire area was dumped in the park right after the fire. It has been there for a majority of the time without any type of cover to protect it from wind and water erosion. This is an offence that would have an ordinary citizen paying a heavy fine.

Why does the quarry need further restoration? Why wasn't it restored properly the first time?

Also, piles of wood chips have been dumped in an area of the park.

I have seen trucks back up to the edge of the river to turn around.

And someone was allowed to cut firewood in one of the fens.

All of this has added to a degradation of the appearance of the park.

Finally, I would like to object to the way this project has been presented to the public. From the first introductory meeting my husband and I were told that the CSP would not restore the river unless they got the approval of Alternative 2. I've heard other people say that this was the way it was presented to them, also. At presentations made to various groups around town, Alternative 2 has also been pushed without giving a fair view of the other alternatives. I also think the EIR/EIS/EIS has been slanted to favor Alternative 2. In fairness, I must say that they did include information that shows other alternatives would be better. However, you really have to peruse the document to find them. Most people don't have the time to do that, and accept information given to them, even if it is faulty or biased.

(179-11  
cont.)

179-12

I support Alternative 3 because it restores the river with the least amount of damage to the environment, and still allows golf. It does not disrupt and bisect a community of people, animals, and plants. It leaves the park to the purpose for which it was intended, the public's enjoyment of the natural, scenic, cultural, or ecological values of the resource. And it still allows golfers a place to enjoy their form of recreation without sacrificing the low-impact recreation of others. This also allows CSP to continue receiving revenue from the golf course.

1179-12  
cont.

"When it comes to the preservation of natural open space, it isn't just the bad ideas a community must protect itself from, it's the seemingly good or innocuous ones, too."

<http://www.nytimes.com/1997/03/23/nvregion/1-preserving-land-from-golf-courses-216119.html?scp=3&sq=golf&st=nyt>

JoAnn Robbins



- I179-1 The commenter compares effects of Alternatives 2 and 3 on earth resources, recreation, and wildfire as described in Section 3.6, “Earth Resources”; Section 3.8, “Recreation”; and Section 3.14, “Human Health and Risk of Upset,” of the draft EIR/EIS/EIS. This comment does not raise issues regarding the adequacy, accuracy, or completeness of the draft EIR/EIS/EIS. See Master Response Section 3.2, “Land Use,” for a discussion of the project’s consistency with plans, policies, and regulations applicable to land use.
- I179-2 The commenter states that the project would decrease property values, but does not offer specific facts linking the project to a demonstrable effect on property values that can be clearly attributed to the project. Absent specific facts showing a clear effect on property values, this comment contains speculation that is beyond the required and practicable scope of analysis under CEQA, NEPA, or TRPA regulations. See Master Response Section 3.7, “Economics,” for a discussion of the economic analysis prepared for the project.
- I179-3 The commenter’s suggestion that constructing a Meyers visitors center/museum could provide an educational element connected to the park and be a source of revenue is noted. The commenter’s suggestion that revenue losses under Alternative 3 could be reduced with expansion of an event center and restaurant is noted. This comment does not raise issues regarding the adequacy, accuracy, or completeness of the draft EIR/EIS/EIS.
- I179-4 The commenter states that the project would displace residents who do not want to live near the golf course; however, she does not offer specific facts that can be clearly attributed to the project linking proximity of golf courses to demonstrable effects related to residential displacement. Absent specific facts showing a clear correlation between the location of golf courses and displacement of residents, this comment contains speculation that is beyond the required and practicable scope of analysis under CEQA, NEPA, or TRPA regulations.
- I179-5 The commenter provides text regarding special-status species and recreation from the *Environmental Assessment for Threshold Updates for Regional Plan Update for the Lake Tahoe Region* (published April 9, 2007). This comment does not raise issues regarding the adequacy, accuracy, or completeness of the draft EIR/EIS/EIS.
- I179-6 The commenter asks about potential impacts of tree removal on fens and avoidance of biological resources during final design. See Master Response Section 3.3, “Biological Resources.”
- I179-7 The commenter lists rare plants found in the study area. See Master Response Section 3.3, “Biological Resources.”
- I179-8 The commenter discusses potential impacts on habitat for bird species and habitat connectivity. See Master Response Section 3.3, “Biological Resources.”
- I179-9 As described in Section 3.5, “Biological Resources,” of the draft EIR/EIS/EIS under Mitigation Measure 3.5-7A, “Implement Weed Management Practices during Project

Construction,” control measures may include herbicide application, hand removal, or other means of mechanical control. Noise impacts associated with the project are described in Section 3.12, “Noise.” See response to comment I6-3 for a discussion of neighborhood screening. See Master Response Section 3.3, “Biological Resources,” for a discussion of impacts on biological resources.

I179-10

The comment reiterates sections of the draft EIR/EIS/EIS and various planning documents. See Master Response Section 3.2, “Land Use.”

I179-11

The commenter reiterates visual impacts and project components of Alternative 2 as described in Section 3.7, “Scenic Resources,” of the draft EIR/EIS/EIS. See the following responses to comments and master response:

- ▶ response to comment AOB8-6 for a discussion of the quarry;
- ▶ response to comment I6-3 for a discussion of neighborhood screening; and
- ▶ Master Response Section 3.3, “Biological Resources,” and 3.4, “Hydrology, Flooding, Geomorphology, and Water Quality,” for a discussion of the fens.

I179-12

The commenter expresses support for Alternative 3. The commenter’s opposition to Alternative 2 and belief that it was given undue bias is noted. See response to comment AOB8-1 for discussions about the selection of a proposed Preferred Alternative and about the public involvement process.



## Upper Truckee comments

Michael Robinson [MRobinson@kleinfelder.com]

**Sent:** Wednesday, November 03, 2010 8:28 AM

**To:** Project, Upper Truckee



---

Greetings:

While I have not had the opportunity to delve into the options very deeply, I would like to comment that restoring a "natural" and healthy river should be the priority. If golf can be accommodated simultaneously that is fine, but both the physical impacts such as encroachment, restricted floodplain, and erosion as well as the other impact such as fertilizer and herbicide runoff need to be eliminated. Option 5 appears to address those concerns, but perhaps one of the others could as well.

With all the talk about the beauty of Lake Tahoe, it must be remembered that the true goal needs to be a healthy lake and surrounding ecosystem, not just one that looks nice but is sterile and artificial.

Thank you.

Mike Robinson  
Minden, NV

I180-1

I180-1

The commenter's support for Alternative 5 is noted. The commenter states that if physical impacts from the golf course could be avoided, then a golf course would be okay. Physical impacts are discussed throughout the draft EIR/EIS/EIS and summarized in Executive Summary Table ES-1. Most impacts have been mitigated to a less-than-significant level. Only short-term water quality impacts would be significant and unavoidable under Alternatives 2–5, with or without a golf course. As discussed in Section 3.4, "Geomorphology and Water Quality," of the draft EIR/EIS/EIS, a significant and unavoidable impact would result under CEQA, NEPA, and TRPA regulations if the narrative turbidity standard (<10% above background) would be violated. Although this is considered a significant impact for the CEQA, NEPA, and TRPA analysis, exceeding this standard would not necessarily correspond to an adverse effect on beneficial uses.

**Golf course/ river project**

aprod132@sbcglobal.net [aprod132@sbcglobal.net]

**Sent:** Thursday, October 07, 2010 10:12 AM

**To:** Project, Upper Truckee



---

Hello, My vote is to leave the golf course in it's present location. Do not move it into the Washoe meadows area. Thank you, Art Rodriguez

1181-1



I181-1

The commenter's support for keeping the golf course at its current location is noted. This comment does not raise issues regarding the adequacy, accuracy, or completeness of the draft EIR/EIS/EIS.

**LTCC**

Michael Rogan [michaelpatrickrogan@gmail.com]

**Sent:** Wednesday, October 13, 2010 9:11 AM

**To:** Project, Upper Truckee



---

There is a rumor that there is a good chance that the LTGC might be closed for good. That is a crazy idea! I support keeping the course open at all costs. It would be stupid to lose the recreation opportunity that the golf course provide locals and visitors alike.  
Michael Rogan

182-1

Letter  
1182  
Response

Michael Rogan  
October 13, 2010

---

I182-1

The commenter's support for keeping the golf course open is noted. This comment does not raise issues regarding the adequacy, accuracy, or completeness of the draft EIR/EIS/EIS.



**Upper Truckee River Project**

Patrick Ronan [ronan@tahoelakeshorelodge.com]

**Sent:** Tuesday, October 19, 2010 9:50 AM

**To:** Project, Upper Truckee



---

Alternative 2 is the right approach to solving the problem. I hope that one is chosen to take care of the issue and to allow the area to continue to be such a good area for public recreation.  
Thank you,

| 1183-1

Patrick Ronan

I183-1

The commenter's support for Alternative 2 is noted. This comment does not raise issues regarding the adequacy, accuracy, or completeness of the draft EIR/EIS/EIS.

**Upper Truckee Project**

Cookie Rork [cookierork@hotmail.com]

**Sent:** Friday, October 15, 2010 11:21 AM

**To:** Project, Upper Truckee



I have reviewed all the proposed alternatives to restore the portion of the UTR within the golf course boundaries. I believe Alternative 2 is the only reasonable compromise. It seems to address all concerns - economic, ecological, etc. My support is definitely with Alternative 2.

1184-1

Thank you,

Cookie Rork

Physical address: 314 Uplands Way, South Lake Tahoe, CA 96150



I184-1

The commenter's support for Alternative 2 and its economic and ecological value is noted. This comment does not raise issues regarding the adequacy, accuracy, or completeness of the draft EIR/EIS/EIS.



## Upper Truckee River Restoration

SouthTahoeRealty@aol.com [SouthTahoeRealty@aol.com]

**Sent:** Friday, October 29, 2010 10:29 AM

**To:** Project, Upper Truckee

Please do not eliminate 33,000 rounds of golf per year, 168 jobs and \$6 million dollars flowing into the South Shore economy each year. The state will also lose approximately \$880,000 per year in revenue if the golf course is eliminated.

Alternatives #2 and #4 would provide for the needed environmental work, and preserve an important recreational opportunity at South Shore which is *vital* to our economic survival, without employing the most draconian and unnecessary of the alternatives... #5. Please discard alternative #5 from consideration; this town simply cannot afford the lost jobs, lost income and outstanding recreational benefits for locals and visitors alike.

1185-1

Thank you. Please acknowledge receipt of this email.

*Doug Rasner*

California Corporate Broker

Chase International South Tahoe Realty

CA Lic 00710564

929 Tahoe Keys Blvd (Corner of Highway 50)

South Lake Tahoe, CA 96150

(530) 544-2121 office

(877) 601-3030 toll-free

(530) 548-7400 fax

(530) 314-9221 cell

*SouthTahoeHomes.com*

*SouthTahoeRealty@aol.com*

*drasner@chaseinternational.com*



I185-1

The commenter's support for Alternatives 2 and 4 and opposition to Alternative 5 is noted. This comment does not raise issues regarding the adequacy, accuracy, or completeness of the draft EIR/EIS/EIS.





**Golf Course Relocation**

Douglas Ross [dross50@att.net]

**Sent:** Wednesday, September 22, 2010 9:45 AM

**To:** Project, Upper Truckee

**Cc:** Doug Ross [dross50@att.net]

---

Dear Cindy,

My family and I oppose the considered plan to relocate 9 holes of the golf course. Alternative 2 specifically becomes undesirable. We favor stabilizing the banks of the Truckee but would prefer no infringement into Washoe Meadows State Park.

| 1186-1

Regards,

Doug Ross and family

I186-1

The commenter's opposition to Alternative 2 because of infringement of Washoe Meadows SP is noted. See Master Response Section 3.2, "Land Use," for a discussion of lands being traded under Alternative 2.

I187

**Golf course/River realignment**

Douglas Ross [dross50@att.net]

**Sent:** Thursday, November 04, 2010 9:31 AM

**To:** Project, Upper Truckee

**Cc:** Doug Ross [dross50@att.net]

---

Dear Park Service,

I'm sure that you have heard all of the pros and cons of the Washoe Meadows Golf Course project, so I will not bore you with my list of specifics. Please note that my family and I are opposed to Alternative 2 as your preferred choice. | 1187-1

Regards,  
Doug Ross and Family

Letter  
1187  
Response

Doug Ross  
November 4, 2010

---

I187-1

The commenter's opposition to Alternative 2 is noted. This comment does not raise issues regarding the adequacy, accuracy, or completeness of the draft EIR/EIS/EIS.



Nov 2, 2010

Dear Cyndie,

I have lived in the Washoe State park area for 30 years, and have utilized the park for recreation and serenity. When the park dept took over that area, the grant deed stated that the park would stay natural - NO Development - What happened?! There has not even been a water quality study done to determine the negative - Yes negative effects of placing nine holes of the golf course on the other side of the river. It doesn't take a rocket scientist to see that the effects will be huge. Also, there are major sewer mains - 15" and 8" that run right through the proposed area. STPUD crews must do regular maintenance on those mains - After they are under water holes, sand traps and obstacles, how can those lines be maintained? Manholes will be buried - What if there is a major sewer spill? This project should not occur. The river can be restored without hampering the existing course. Leave it be -

1188-1

1188-2

1188-3

Heather Ross

1126 San Diego St  
South Lake Tahoe, CA 96150

(530) 577-6430

- I188-1            The commenter questions land use proposed under Alternative 2 and refers to the settlement agreement from the 1984 litigation. See Master Response Section 3.2, “Land Use,” for a discussion of consistency with the settlement agreement and statute.
- I188-2            The commenter states that a water quality study to evaluate impacts of relocating nine holes into Washoe Meadows SP has not been completed. See Master Response Section 3.4, “Hydrology, Flooding, Geomorphology, and Water Quality,” for a discussion of fertilizer use and runoff.
- I188-3            The commenter has concerns about impacts on STPUD sewer lines. As discussed in Section 3.4, “Geomorphology and Water Quality,” of the draft EIR/EIS/EIS, Mitigation Measures 3.4-2A, 3.4-2B, and 3.4-2C have been added to the project to protect vulnerable portions of the sewer pipeline from as great as a 100-year flood event. In coordination with STPUD, State Parks will design and implement measures to protect the buried sewer pipeline north and west of the proposed reconnected meanders next to pipelines; or State Parks will work with STPUD to relocate the vulnerable section of pipeline. Final design will prevent channel adjustments from as great as a 100-year peak event in areas where sewer pipelines could be exposed or undermined. The design will include specific measures to stabilize the streambeds and protect the streambank in the lower reaches of Angora Creek and the unnamed creek. The measures would protect against increased erosion from as great as a 20-year peak event or worse, as needed to protect the sewer pipeline crossings. Final design schematics will be reviewed and approved by the STPUD Engineering Department.
- Before the project would be implemented, State Parks would verify utility locations, coordinate with utility providers, prepare and implement a response plan, and conduct worker training concerning accidental utility damage. Buried utility lines would be clearly marked within the construction area before any earthmoving activities begin. Before construction starts, a response plan would be prepared to address how workers should respond if a utility line is damaged. The plan would identify chain-of-command rules for notifying authorities and appropriate actions and responsibilities to ensure the safety of the public and workers. Worker training for how to respond to such situations would be conducted by the contractor. The response plan would be implemented by State Parks and its contractors during construction activities.
- The potential increased risk of damaging sewer pipelines and degrading water quality would be less than significant because vulnerable portions of the sewer pipeline would be protected from as great as a 100-year flood event; utility locations would be verified, utility providers would be consulted, a response plan would be prepared and implemented, and worker training concerning accidental utility damage would be conducted; and bed and bank stability in the lower reaches of the two tributary creeks would be ensured.

I195-1

The commenter's opposition to Alternative 2 is noted. This comment does not raise issues regarding the adequacy, accuracy, or completeness of the draft EIR/EIS/EIS.

**Upper Truckee River restoration**

Ron Rumble [r\_rumble@yahoo.com]

**Sent:** Thursday, November 04, 2010 5:44 PM

**To:** Project, Upper Truckee

I189

---

November 4, 2010

Re: Upper Truckee River Restoration Project

To Whom It May Concern,

I am a thirty seven year Tahoe resident and retired business person. I am writing to indicate to you my desire to see Alternative #2 chosen. This solution appears to be a compromise that satisfies the majority of stakeholders. Without going into detail regarding my decision, I would be pleased to see this outcome.

I189-1

Sincerely,

Ronald Rumble



I189-1

The commenter's support for Alternative 2 is noted. This comment does not raise issues regarding the adequacy, accuracy, or completeness of the draft EIR/EIS/EIS.

I190

November 10, 2010

To whom it may Concern,

The golf course is a bad choice to put in the Washoe Meadows State Park. You will get a lot of complaints because there will be lots of bears and coyotes coming into our neighborhoods for food because they will have no home down in the meadow anymore. Also, there will be less space for kids like me to play and ride our bikes. When my friends and my parent's friends come over there will be one less choice of where to go on a walk. If you were to stand out there, there are many, many users of the meadow with many different activities such as biking, walking, snow shoeing, skiing, etc.

My grandpa works at a golf course in Southern California and I like to golf but the golf course is fine how it is with enough golf holes. If the golf course does expand you won't get any more business than you already have. You are just wasting precious and well used land that gets more use than the golf course. Think of the environment and the wetlands that are being used up all over the USA. If you let the golf course go through there will be one less really needed wetland and activity spot gone. If the golf course goes through my neighbors and I will have one less place to have fun.

I190-1

Sincerely,

Caleb Russell

Caleb Russell

Age 13

773 Little Bear Lane

South Lake Tahoe, CA 96150

I190-1

The commenter has concerns about recreation access under Alternative 2. The commenter feels that coyote and bear activity will increase in surrounding neighborhoods with implementation of Alternative 2. The commenter also has concerns about impacts on wetlands. See Master Response Section 3.3, "Biological Resources," for a discussion of impacts on wetlands and common wildlife.



Cyndie Walck  
CA State Parks and Rec., Sierra District  
P.O. Box 16  
Tahoe City, CA 96145

Re: River-Golf Course EIR/EIS/EIS

Dear Ms. Walck,

I support river restoration but I oppose Alternative 2. I enjoy playing golf but Lake Tahoe Golf Course should stay where it is. Moving the golf course is a waste of resources and not worth the environmental damage that will be caused by eliminating 60 acres of wildlife habitat and cutting 1,640 native trees 10 inches in diameter or more. (This is in addition to the habitat loss that occurred during the "Dead Tree Removal" projects in the park in the fall of 2009 and also the smaller trees that will be cut under Alternative 2 and aren't even being counted in the "10 inches or more" category). Such a massive logging campaign will cause sedimentation into the Truckee River which will devalue the river restoration plan. Putting a golf course in an area that had native trees will degrade and eliminate habitat and create erosion because tree roots will no longer hold the soil in place.

1191-1

Alternative 2 is being pushed as the most economically feasible alternative but with golf holes 6, 7, and 13 located in and near wet meadows and with golf holes 9, 10, 11 surrounding a spring complex these parts of the golf course will be under water and will not be playable much of the year. How will a flooded golf course that can't be played make any money?

1191-2

According to a February 21, 2008 article in the New York Times titled *More Americans Are Giving Up Golf*, "The industry now counts its core players as those who golf eight or more times a year." Golf is obviously in decline, is only enjoyed part of the year in Tahoe, and only enjoyed by people who can afford to pay green fees. In contrast, lower impact recreation is increasing as is referenced in an October 6, 2006 New York Times article entitled *Vacation Homes: Seeking Birds, Not Birdies*, "Many buyers these days want amenities to include outdoor pursuits..." Washoe Meadows State Park currently offers year-round, affordable, low impact recreation to everyone. The state park is accessible to all citizens, all year long, regardless of their economic situation. Let's keep it that way.

1191-3

It was a mistake in the first place to build a golf course so close to the river. Why repeat the same mistake by relocating the golf course onto sensitive land in Washoe Meadows State Park? Please choose alternative three and leave the state park in its present state.

1191-4

Sincerely,

Glenn Russell  
773 Little Bear Lane  
South Lake Tahoe, CA 96150

- I191-1            The commenter has concerns about impacts on wildlife habitat under Alternative 2. See Master Response Section 3.3, “Biological Resources,” for a discussion of wildlife impacts and tree removal.
- I191-2            The commenter has concerns about impacts on wetlands and fens under Alternative 2. See Master Response Section 3.3, “Biological Resources,” for a discussion of impacts on wetlands and fens.
- I191-3            The commenter is opposed to reconfiguring the golf course and wants dispersed recreation. Under Alternative 2, the new portion of the reconfigured golf course would remove 23 acres of Washoe Meadows SP from other recreational uses; however, Washoe Meadows SP totals 620 acres (including areas outside of the study area) and dispersed recreation would continue throughout the remaining 527 acres of the State Park. In addition, portions of Lake Valley SRA that were previously occupied by golf course would become available to trail users and water recreationists (approximately 39 acres). The area outside of the driving range would also continue to be available during winter months, and access to this area would be improved because the bridge would no longer be gated. See Master Response Section 3.5, “Recreation,” for additional discussion of recreation access.
- I191-4            The commenter’s support for Alternative 3 is noted. This comment does not raise issues regarding the adequacy, accuracy, or completeness of the draft EIR/EIS/EIS.



November 9, 2010

TRPA Advisory Planning Commission  
Lower Kingsbury Grade  
128 Market Street  
Stateline, NV 89449

Re: Upper Truckee River Restoration and Golf Course Reconfiguration Project

I have read the executive summary of the EIR and Volume I of the EIR/EIS/EIS. Although I support river restoration I strongly oppose Alternative 2 which is a betrayal of CSP's promise to protect and preserve the land for the 7<sup>th</sup> generation, ignores laws that were meant to protect the park, and has negative, irreversible impacts on the environment and on park users. Washoe Meadows State Park is an intact wildlife corridor that supports diverse plant and animal communities and deserves the protection that was promised in the 1984 litigation settlement and the 1984 Legislative Statute.

The 1984 Litigation Settlement states, "The subject property contains unique and irreplaceable resources in the Lake Tahoe Basin, and is extremely valuable to the maintenance of the water quality of Lake Tahoe itself...." Also, "The presence of the Upper Truckee River and Angora Creek on the property result in a merger of two natural wildlife movement corridors. Waterfowl such as Canada geese and mallard ducks have been observed on the property with regularity, suggesting that this land is valuable habitat for birds along the Pacific Flyway. The diversity of plant communities, the presence of small pond areas and the two creeks all create exceptional conditions for wildlife on the property....."

I192-1

According to the 1984 California Legislative Statute, "The unique subject property is scientifically valuable, environmentally sensitive, vital to the maintenance of riparian habitat and to the maintenance of water quality in Lake Tahoe, and is, therefore, highly suitable for public acquisition in order to preserve and maintain these natural resource values..."

Now, 26 years later, CSP is showing contempt for these laws through its proposal to move golf course fairways into the park under Alternative 2.

The draft EIR has several inadequacies and shortfalls. Bias towards Alternative 2 has been evident from the beginning and is characteristic of the entire document.

I192-2

This bias was demonstrated in the original title of the project, when the NOP was first released in 2006, "Upper Truckee River Restoration and Golf Course Restoration Project". This bias was demonstrated when the NOP stated that the preferred alternative was Alternative 2. This bias was demonstrated in the public meeting held in February of 2006, when citizens were asked to look at a map of the park and identify locations in the park for golf course fairways. This bias for has been demonstrated in CSP's slick PR campaign around town, at the Meyers Round Table meeting, LTUSD school board meeting, Soroptomist meeting, and local television interview where the message has been repeated that Alternative 2 is the only economically feasible alternative. This bias is evident in CSP's mantra that the golf course will be relocated to "previously disturbed land", when in fact, the disturbed area is actually a very small part of the proposed golf course area and many of the disturbances such as the dirt pile, wood chip piles, rock pile, and gravel road, were caused by CSP itself. This bias is demonstrated in the vegetation map which mischaracterizes wet meadow as dry meadow, near proposed golf holes 6, 7, and 13.

1192-2  
cont.

Amazingly, in spring of 2010, the title of the project was changed to "Upper Truckee River Restoration and Golf Course Reconfiguration Project" and the preferred alternative was dropped which is confusing, misleading, and shows a lack of transparency to the public.

The draft EIR fails to adequately consider the impact of Alternative 2 on park users. The executive summary states that "Implementing Alternative 2 would assist in the long-term productivity of the Lake Tahoe Golf Course..." and "The golf course would support seasonal tourism in the South Lake Tahoe area..." but the executive summary does not mention any effects on park users. The EIR analysis in Alternative 2 minimizes the negative impacts on park users and focuses instead on the beneficial effects on golfers.

According to Table ES-1, 3.8-2, "Reduction in Recreation Opportunities, Uses, and Experiences Related to Spring/Summer /Fall Outdoor Recreation", there is "less than significant impact" after mitigation. In fact, implementation of Alternative 2 will have a long term, irreversible, and significant impact on park users, as golf holes 6, 7, 8, 12 and 13, will all block existing trails to the river. Alternative 2 will diminish the park experience for park users because 2.6 miles of trails will be lost, river access will be limited, and the 1.4 miles of new designated trail will border the golf course or cross through the golf course instead of meandering through quiet, open spaces suitable for wildlife viewing.

1192-3

The EIR fails to adequately consider that the proposed exchange of land between state recreation area and state park is not an exchange of land of equivalent value because the part to be re-designated state park would be closer to the airport and border Highway 50

1192-4

and Sawmill Pond Road. This is even indicated in the General Plan document for Lake Valley SRA: pg. 47 "The relatively greater suitability of Washoe Meadows for natural interpretation, nature study, hiking and similar uses, as well as its relative distance from the golf course and highway, are considered in planning for Lake Valley State Recreation Area." p. 48 "Modern development adjacent to unit boundaries: Highway 50 and the Lake Tahoe airport generate noise and visual intrusions affecting almost all areas potentially useful for interpretation...." Indeed, the proposed land swap would not provide the quality outdoor experience that Washoe Meadows State Park now offers to park users and would greatly diminish the park experience. Alternative 2 is in defiance of the General Plan for Lake Valley SRA.

I192-4  
cont.

The EIR fails to adequately consider the negative impact on wildlife within the park. According to table ES-1, 3.5 - 10, "Effects on Potential Wildlife Movement Corridors", implementing Alternative 2 will remove/fragment 60 acres of habitat. Also, 3.5-9 "Long term Effects on Special Status and Common Wildlife Species and Habitats", under Alternative 2, 60 acres of Lodge pole pine forest, Jeffrey Pine forest, sage brush and other vegetation types would be removed. Additionally, 3.5-6, "Tree Removal and Forest Land Conversion", Alternative 2 will result in the removal of 1,640 native trees. These actions are all deemed "less than significant". Wildlife corridors are not just along streams and rivers. There is upland habitat as well. But the EIR/EIS/EIS places more value on SEZ than on upland habitats and fails to consider these interrelated and interconnected ecosystems within the park..

The EIR is inadequate because the analysis in Alternative 2 minimizes the negative impacts on upland, forest and meadow animal habitats. Removal of 60 acres of upland habitat is irreversible and extremely significant, especially since "The vegetation present in this unusual setting consists of an attractive mosaic of Lodge pole pine, Jeffrey pine and sedge and grass meadows with an understory of white fir. The meadows which inter-finger with the forest canopy create an "edge effect." This forest-meadow edge is recognized as most valuable to wildlife because it provides meadow areas for feeding and grazing by day, and forest protection by night."(Litigation Settlement Agreement, Lake Country Estates, Inc., et al Plaintiffs vs. Tahoe Regional Planning Agency, et al., Defendants, No. CV-F-81-127-REC and Lake Country Estates, Inc., et al., Plaintiffs, vs. California Tahoe Regional Planning Agency, et al., Defendants, No. CV-F-81-132-REC, dated June 12, 1984)

I192-5

The draft EIR fails to consider the negative impact of Alternative 2 on neighborhoods that surround the park. Eliminating animal habitats within the park will lead to even more wildlife activity in our neighborhoods, which is of special concern, especially in light of the recent habitat destruction caused by the Angora fire.

The draft EIR fails to adequately analyze the impact of surrounding a protected fen/spring complex with a manicured golf course with fertilizers, herbicides, insecticides,

I192-6

and pesticides. Of special concern are proposed golf holes 10 and 11, which are located on a steep hill above the spring complex. Fens and spring complexes are unique ecosystems that facilitate wildlife movement. The draft EIR does not adequately analyze these important wildlife corridors.

1192-6  
cont.

I support river restoration, but urge you to choose an alternative such as Alternative 3 that still allows 18 holes of golf on the east side of the river but also protects and preserves Washoe Meadows State Park as was mandated in the 1984 litigation settlement and the 1984 California legislative statute.

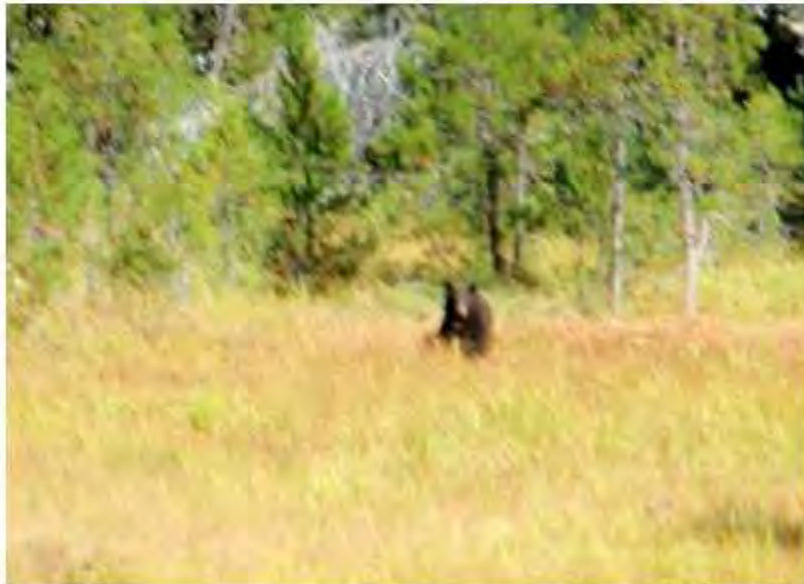
1192-7

Sincerely,

Krissi Russell  
773 Little Bear Lane  
South Lake Tahoe, CA 96150  
530-577-4335



Bear that we startled on the trail near proposed golf fairway #12. August, 2010



Mother bear in the fen area above proposed golf fairway #12. Oct, 2010





Disturbed Areas created by CSP



Area is characterized as dry meadow near golf holes 6, 7, and 13



- I192-1            The commenter has concerns about impacts on wildlife and consistency with the 1984 legislative statute and settlement agreement from the 1984 litigation. See Master Response Section 3.3, “Biological Resources,” for a discussion of impacts on wildlife; see Master Response Section 3.2, “Land Use,” for a discussion of consistency with the 1984 legislative statute and settlement agreement from the 1984 litigation.
- I192-2            The commenter believes that the draft EIR/EIS/EIS is biased toward Alternative 2 and that the draft EIR/EIS/EIS mischaracterizes previously disturbed land and dry meadow areas. See the following responses to comments and master response:
- ▶ response to comment AOB8-1 for a discussion of the scoping process and public participation;
  - ▶ response to comment AOB8-6 for a discussion of the quarry area; and
  - ▶ Master Response Section 3.3, “Biological Resources,” for a discussion of vegetation mapping of the study area.
- I192-3            The commenter has concerns about recreation impacts on park users under Alternative 2. Existing trail use was considered, including connectivity with the neighborhood as well as regional bike path. See Master Response Section 3.5, “Recreation,” for a discussion of trail access and other recreation impacts.
- I192-4            The commenter has concerns about the land trade proposed under Alternative 2 and consistency with the Lake Valley SRA General Plan. See Master Response Section 3.2, “Land Use,” for a discussion of land trade and consistency with State Parks plans and policies.
- I192-5            The commenter states that the analysis of impacts on wildlife movement corridors is insufficient and fails to address the interconnection of upland areas and the SEZ. See Exhibit 3-1 and Master Response Section 3.3, “Biological Resources,” for a discussion of wildlife corridors and SEZ; see Master Response Section 3.2, “Land Use,” for a discussion of the habitat values of the lands proposed to be exchanged.
- I192-6            The commenter has concerns about impacts related to pesticides and fertilizer use surrounding fens. See Master Response Section 3.3, “Biological Resources,” for a discussion of fens; see Master Response Section 3.4, “Hydrology, Flooding, Geomorphology, and Water Quality,” for a discussion of fertilizer use, runoff, and fens.
- I192-7            The commenter’s support for Alternative 3 is noted.

**Upper Truckee River Project**

derek rust [rustayy@yahoo.com]

**Sent:** Tuesday, October 12, 2010 12:17 PM

**To:** Project, Upper Truckee



---

I am writing to you today to vote in favor of alternative #2 in the Upper Truckee River restoration project. It is a long over due issue and I would love to see this get the attention that it deserves. Thanks! | 1193-1  
Derek Rust

Letter  
I193  
Response

Derek Rust  
October 12, 2010

---

I193-1

The commenter's support for Alternative 2 is noted. This comment does not raise issues regarding the adequacy, accuracy, or completeness of the draft EIR/EIS/EIS.



## Upper Truckee Restoration Project

Jim Ryan [jryan@comcast.net]

**Sent:** Monday, October 18, 2010 4:48 PM

**To:** Project, Upper Truckee



---

Gentlemen,

I have reviewed the subject plan and I support Alternative 2 as being the most productive and accomplishing the goals of the plan. As a long time fisherman on the Truckee I think this action is vital to the well being of the river.

1194-1

James L. Ryan  
39 Martha Rd Orinda, Ca. 94563  
925 254 6889

Letter  
I194  
Response

James L. Ryan  
October 18, 2010

---

I194-1

The commenter's support for Alternative 2 is noted. This comment does not raise issues regarding the adequacy, accuracy, or completeness of the draft EIR/EIS/EIS.

**WASHOE MEADOWS STATE PARK**

Dorothy Salant [dorosa@comcast.net]

**Sent:** Sunday, September 19, 2010 7:50 PM

**To:** Project, Upper Truckee

I195

---

HOW DARE ANYONE USE OUR PUBLIC LAND FOR A GOLF COURSE.... THE HEAD OF  
YOUR PUBLIC PARK SHOULD BE FIRED IMMEDIATELY...NOOOOOOOOOOOO GOOD,  
I AM TOTALLY AGAINST THIS.... ALL OF YOU MAKE A LOUD NOISE AND STOP IT.

I195-1

DOROTHY SALANT  
500 SUMMIT AVE  
MILL VALLEY CA 94941

**River-Golf Course EIR/EIS/EIS**

Dorothy Salant [dorosa@comcast.net]

**Sent:** Wednesday, November 03, 2010 4:35 PM

**To:** Project, Upper Truckee

I196

---

TO WHOMIT MAY CONCERN.

THIS IS A VOTE AGAINST THE GOLF COURSE IN FAVOR OF KEEPING WASHOE MEADOWS STATE PARK JUST AS IT IS NOW. THIS IS PUBLIC PROPERTY..... PRIVATE PROPERTY CAN NOT IMPINGE ON IT...

The draft EIR is inadequate because it states that the impact of Alternative 2 will have a "less than significant impact" on recreation. For park users, removing 60 acres on natural habitat to create a golf course will have a very significant and negative impact on recreation. The park will be fragmented, many trails to the river will be lost, the park will be surrounded by golf holes, and park users will actually have to cross the golf course or take trails around it to access the river.

I196-1

IF THIS E MAIL IS NOT DRAFTED IN A WAY THAT WILL GET INTO THE PUBLIC INPUT ON THIS ISSUE, PLEASE REPLY AND LET ME KNOW HOW THAT CAN BE DONE.

THANK YOU

DOROTHY SALANT  
500 SUMMIT AVE  
MILL VALLEY CA 94931

Letter  
I196  
Response

Dorothy Salant  
November 3, 2010

---

I196-1

The commenter has concerns about recreation access under Alternative 2. See Master Response Section 3.5, "Recreation."



**golf course**

Sanfelicejw@aol.com [Sanfelicejw@aol.com]

**Sent:** Saturday, September 11, 2010 2:44 PM

**To:** Project, Upper Truckee

I197

BIENG AS THIS GOLF COURSE IS SUCH A BIG POLLUTER OF LAKE TAHOE, ITS TIME TO CORRECT THIS MISTAKE. MOVE THE GOLF COURSE ALTOGETHER, GET IT FAR AWAY FROM THE CREEK AND THE LAKE. THEN WE CAN RESTORE THE CREEK AND WET LANDS, AND HELP TO RESTORE THE CLARITY OF THE LAKE. LAKE TAHOE IS MUCH GREATER AS A RECREATION ENITY THAN A GOLF COURSE. ITS EASIER TO MOVE THE GOLF COURSE, THAN IT WOULD BE TO MOVE THE LAKE

I197-1

JIM SANFELICE

Letter  
I197  
Response

Jim Sanfelice  
November 10, 2010

---

I197-1

The commenter believes that the golf course should be removed and has concerns about water quality. See Master Response Section 3.4, "Hydrology, Flooding, Geomorphology, and Water Quality," for a discussion of fertilizer use and runoff.

**Opposition to Expand golf course**

Andi Sannazzaro [adsanfam@yahoo.com]

**Sent:** Thursday, November 11, 2010 9:34 AM

**To:** Project, Upper Truckee



As 30+ year residents of the North Upper Truckee area we strongly oppose the expansion of the golf course across the UT river. Decades of restoring sensitive meadows, revegetating the quarry bowls, thinning trees at tax payer expense will be wasted to expand a golf course. Golf is a dying industry. 9 holes are plenty. Alternative 3 is the correct choice.  
Sincerely, David and Andi Sannazzaro

1198-1

I198-1

The commenters' support for Alternative 3 is noted. This comment does not raise issues regarding the adequacy, accuracy, or completeness of the draft EIR/EIS/EIS.

**LTGC river restor & reconfig project**

John Sattler [jps423@att.net]

**Sent:** Wednesday, September 22, 2010 8:40 PM

**To:** Project, Upper Truckee



---

To: Cyndie Walck

As Tahoe resident, I believe the LTGC is a vital part of our economy and should remain an 18 hole facility . In the recent Economic Impact Study it was estimated the local economy would be negatively impacted by as much as \$6 million if the course were closed. This number does not include the numerous charity golf tournaments held, raising thousands of dollars for both local organizations & individuals.

If the course is reduced to a nine-hole facility or removed completely this would have a detrimental effect on all California State Parks as it is one of the few positive revenue producing parks in the State & the only park making money in the Basin.

After attending the informational meeting at the golf course, I am still not convinced the new holes are the only alternative (shoring up the banks of the river may be a cheaper and more widely accepted alternative), but I do know we need to keep an 18 hole golf course for the recreational and economic health of our community.

Thank you,  
John Sattler

1199-1

Letter  
I199  
Response

John Sattler  
September 22, 2010

---

I199-1

The commenter's support for maintaining an 18-hole golf course and its economic value is noted. This comment does not raise issues regarding the adequacy, accuracy, or completeness of the draft EIR/EIS/EIS.





**Alternative 2**

Natasha Kidman Schue [natashakidman@gmail.com]

**Sent:** Thursday, October 21, 2010 12:29 PM

**To:** Project, Upper Truckee

---

To Whom it May Concern,

As a Meyer's Resident (I live on the loop behind Bakersfield), I am in strong support of Alternative 2. I enjoy living close by to the meadows and river, as well as the golf course and I love having access to the land right in front of my home. Currently, I do believe the golf course layout is obtrusive and not user-friendly for those residents who want to walk and hike around the area. I love the boardwalk that was built along HWY 50 and the golf course, but it does not lead pedestrians anywhere and therefore is not utilized as much as it could be. I love the idea of having more trails and boardwalks available to pedestrians in the area, so that we may all enjoy the surroundings. I think it would be a great addition to the recreation in the area (think Sun River, Oregon) and would be attractive to both residents and visitors alike.

I am also in favor of keeping the golf course at 18 holes and redeveloping the area where the new part of the golf course would be developed. That area is not currently assessable and quite frankly, it's not very pretty either. It would be wonderful to create a new course which would attract new players and visitors to the area. Additionally, I like the idea of redeveloping the current topography so that it would have a more natural look all throughout the golf course. And most importantly, I am very happy to hear that this alternative would allow for the river to be restored back to its original state so that we can decrease the sediment being fed into the lake and redevelop the natural plants and environment along the river.

This alternative seems like a win-win for both the environment and the economy, not to mention it will add a lot of interest to the area.

Thank you,

Natasha Kidman Schue  
South Lake Tahoe Resident

1200-1

I200-1

The commenter's support for Alternative 2 and its recreation, environmental, and economic value is noted. This comment does not raise issues regarding the adequacy, accuracy, or completeness of the draft EIR/EIS/EIS.

## Washoe Meadows project

karenina.schuller [highsierramtdogs@att.net]

**Sent:** Tuesday, September 28, 2010 7:15 PM

**To:** Project, Upper Truckee



I have lived in Tahoe for 36 yrs. and am a homeowner. I have ridden horses back there and run my dogs and snowshoe. This is a **very** sensitive area and have noticed underground streams in Spring right where golf cart paving would be! The meadow is full of wildflowers in the spring and is so beautiful! Please fix the stream and re-plant the area where the quarry was as it's a definite eyesore.

There are many types of wildlife there, porcupines, bears, raptors & even some mt. lions have been seen back there! We were told by the Amacker's NOT to go in there (the bog in the middle) as it has quick-mud that they had to get horses out of with backhoe! There's a lawsuit waiting to happen!

It's even MORE sensitive back there than where the golf course currently is!! I am already getting the town to back this response and we are so tired of Tahoe getting paved over, over-recreated in some parts of the forest. You will come up against a force to be reckoned with, have already contacted Sierra Club. The only thing I see is that golfers want some new holes to golf. HOW RIDICULOUS. I do not want golf balls flying at me as well!

Thanks for reading and I hope someone has some sense there. Call me 530.577.0263

Sincerely,

Karenina Schuller

1772 Pioneer Trail

So. Lake Tahoe, Ca. 96150

1201-1

I201-1

The commenter has concerns about impacts on wildlife, fens, and springs under Alternative 2. See Master Response Section 3.3, "Biological Resources," for a discussion of impacts on vegetation, wildlife, springs and fens. See Master Response Section 3.4, "Hydrology, Flooding, Geomorphology, and Water Quality," for additional discussion of springs and fens.

## Comment on Draft EIS for Upper Truckee River Project

Monica Sciuto [mosciuto@yahoo.com]

**Sent:** Wednesday, October 20, 2010 3:10 PM

**To:** Project, Upper Truckee

I202

---

To Whom It May Concern:

I am writing in regards to the Draft EIS for the Upper Truckee River Project. As a neighbor of the golf course, someone who works in the South Lake Tahoe and is concerned about the economy, I wanted to express my support of Alternative #2.

I live in the Elks Club area. I love using the parklands in the area and love running by the Truckee River. I believe that the Truckee River should be preserved and that we should keep erosion to a minimum.

At the same time, I believe the golf course is a beautiful gateway to our community. It shows the beauty of our area as well as the recreation opportunities that we offer. It would be a shame to remove, move (the entire course) or make smaller this great asset. I also believe that the golf courses in our community sustain a great economy for our area. Without this golf course at the full 18 hole capacity, I feel that we will be hurting jobs, tax dollars and potential off-shoot revenue for other businesses in town.

I feel that Alternative #2 keeps the golf course, it's beauty and it's revenue, while preserving the Truckee River and decreasing the erosion to the lake. The option of switching some of the holes around seems like a positive environmental option.

Thank you in advance for considering Alternative #2 for the Upper Truckee River Project.

*Monica Sciuto*

1594 Pebble Beach Dr.

PO Box 19683

South Lake Tahoe, CA 96151

I202-1

I202-1

The commenter's support for Alternative 2 and its economic value is noted. This comment does not raise issues regarding the adequacy, accuracy, or completeness of the draft EIR/EIS/EIS.



## Upper Truckee River Restoration

Michael and Janet Domas [domsisle@etahoe.com]

**Sent:** Thursday, September 02, 2010 2:45 PM

**To:** Project, Upper Truckee

I203

I am avid user of Washoe Meadows State Park, year-round. I understand that the golf course is a good moneymaker for the state parks, however, it also is pollutes the stream environment with use of fertilizer. Moving the golf course into the existing state park will detract from the "natural" meadow as it exists today. There are many park users who do not golf but enjoy walking, biking and skiing without having to avoid golf balls.

I am in support of ALTERNATIVE 4 as a way to improve the watershed, while maintaining use of both the state park and the of the golf course.

I203-1

Please consider implementation of ALTERNATIVE 4.

Thank you.

Janet Seidman-Domas

I203-1

The commenter's support for Alternative 4 is noted. The commenter has concerns about recreation access and fertilizer impacts associated with the golf course. See Master Response Section 3.4, "Hydrology, Flooding, Geomorphology, and Water Quality," for a discussion of fertilizer impacts. See Master Response Section 3.5, "Recreation," for a discussion of recreation access.

## Lake Tahoe Golf Course/State Park River Restoration Project

CShade@DesignWorkshop.com [CShade@DesignWorkshop.com]

**Sent:** Wednesday, October 06, 2010 12:25 PM

**To:** Project, Upper Truckee

I204

To Whom this may concern,

My name is Coleen Shade and I have lived in South Lake for over 21 years. I am currently employed by Design Workshop Tahoe office, a landscape architecture and land use firm. My firm has no involvement with the Lake Tahoe Golf Course project.

It is both my personal and professional opinion that Alternative 2 should be selected as the preferred alternative and implemented.

My experience with the project area has many facets;

I was an environmental planner with the Tahoe Regional Planning Agency from 1989 to 2007 (including time as the Fisheries and Wildlife Threshold Program Manager and then the supervisor of the resource threshold programs). I had a number of opportunities to observe and evaluate the functioning of this reach of the Upper Truckee in addition to other tributaries in the Basin as a part of my work responsibilities.

I lived for 11 years at 710 Cayuga, just a short walk from the Upper Truckee River on the west bank. I hiked, jogged, snowshoed and cross-county skied through the area where Alternative 2 would relocate the golf course. Yes, a very nice amenity to have out your backdoor for the Upper Truckee neighborhoods. With that said, there is no way one can call this area an undisturbed pristine forest. There are hardpacked volunteer trails laced throughout the area, an STPUD dirt road to service the sewer line that runs through the area, lands used for soil and earth materials stock during the construction of the Upper Truckee/Tahoe Paradise subdivision, the project is adjacent to the old Tahoe Paradise race track, there are "dog-hair" thickets of lodgepole pines that are over-due for forest health management....

I now live off of Washoan Blvd on the East side of the Upper Truckee River. Over the 5 years of recreational use of the River in this reach (the airport reach) I have noticed a significant increase of paraphyton on the rocks in the River each summer. Despite the current efforts to implement BMPs on all commercial and residential properties we are still observing an increase in algae growth in a number of our tributaries including the Upper Truckee. The River also needs Best Management Practices to return it to a state of dynamic equilibrium, this can not be done by just armoring its banks with rubble.

I have golfed (if you want to call what I can do golfing) at the golf course for 20 years. I have watched as the River continues to erode its banks despite efforts to armor those banks. The wetland improvements that have been implemented at the golf course are admirable, however, these "features" are still in the middle of a groomed golf course. Alternative 2 proposes to restore the front holes, some of the most sensitive areas within the project area in exchange for moving these front holes across the river and to higher capability lands.

What is gained;

I204-1

- 1) quantifiable SEZ restoration (Soils/SEZ threshold),
  - 2) water fowl habitat restoration, improved osprey foraging (Wildlife Threshold, special interest species)
  - 3) river restoration that moves the golf course reach toward properly functioning conditions and aids other reaches in achieving the same (does not exasperate conditions on other reaches through headcutting and other geomorphological mechanics), improved function improves fish habitat (Fisheries Threshold, moving this reach from poor quality habitat to excellent, measured by length of reach improved),
  - 4) water quality improvements with the reduction of on-site nutrient contributions to the Upper Truckee River (Water Quality Threshold),
  - 5) improved upland vegetation management (forest health) and restoration of wetland and wet meadow native plants (Vegetation Threshold, common forest and plant communities of interest),
  - 6) the TRPA has identified the Lake Tahoe Golf Course as a scenic resource along Highway 50. As a visual resource it has a rating of moderate (2) scenic quality. The conversion and restoration of the front holes to more natural looking conditions could only assist to improve visual resources from the scenic travel route and possibly be enough to increase the rating to excellent (3). (Scenic Quality Threshold, improve the visual resource rating and the travel route rating),
  - 7) Tahoe has many recreation opportunities, as recreation user surveys have pointed out over the years. Where Tahoe falls short in the eye of those surveyed (and this has remained constant over the years) is the lack of developed recreation facilities and the quality of those facilities. Maintaining this 18 hole golf course is an important piece in maintaining developed recreation in the Basin and developing the replacement holes in a manner that is both environmentally appropriate and improves the quality of play is important to the quality of recreation experience available in the Basin (Recreation Threshold, provide quality experiences and maintain and expand recreational capacity).
- If we were just looking at this project from a strict environmental point of view, removing the entire golf course is no doubt the best alternative. However, both CA State Parks and TRPA have recreation objectives in their missions as well as the need to look at a balanced approach that helps to continue to serve their missions. A balanced approach requires one to evaluate this project on the environmental pros and cons, the economic viability, and the communities needs (which includes residents as well as our visitors throughout the State of California). Alternative 2 does all three.

1204.2

**Coleen Shade**, AICP, LEED AP  
Land Use and Environmental Planner/Associate

PO Box 5666  
**DESIGNWORKSHOP**  
STATESIDE, NV 89448  
775 588-5929 (main)  
<http://www.designworkshop.com>

Confidentiality note: This e-mail and any attachments contain information that may be confidential and/or privileged. The information is for the use of the individual or entity originally intended. If you are not the intended recipient, any disclosure, copying, distribution or use of this information is prohibited. If this transmission is received in error, please immediately notify the sender and delete this message and its attachments. If any

- I204-1            The commenter's support for Alternative 2 is noted. The commenter summarizes current conditions of the study area. This comment does not raise issues regarding the adequacy, accuracy, or completeness of the draft EIR/EIS/EIS.
- I204-2            The commenter summarizes benefits under Alternative 2. This comment does not raise issues regarding the adequacy, accuracy, or completeness of the draft EIR/EIS/EIS.

**LAKE TAHOE GOLF COURSE**

drsnehadi@cox.net [drsnehadi@cox.net]

**Sent:** Tuesday, October 12, 2010 2:59 PM

**To:** Project, Upper Truckee

I205

PLEASE keep the lake tahoe golf course open as a 18 hole course. the economy of lake tahoe need more recreation not less and the state need the income . i have lived in tahoe since 1969 a i have seen a steady decline in visitors and business. please do not take away one of the best value for the visitors and the residents. thanks D SHEHADI

I205-1



I205-1

The commenter's support for maintaining an 18-hole golf course and its economic value is noted. This comment does not raise issues regarding the adequacy, accuracy, or completeness of the draft EIR/EIS/EIS.



**FW: Forwarded for D Shehdi**

Walck, Cyndi

**Sent:** Thursday, September 23, 2010 4:45 PM

**To:** Project, Upper Truckee

---

**From:** RonCRettus@aol.com [mailto:RonCRettus@aol.com]

**Sent:** Sunday, September 05, 2010 9:43 AM

**To:** Walck, Cyndi

**Cc:** drshehadi@cox.net

**Subject:** Forwarded for D Shehdi

**Sent for D Shehadi**

**September 3, 2010**

**Dick and Wendy Shehadi**

**2669 Divot Court**

**South Lake Tahoe, Ca. 96150**

**Upper Truckee River Restoration**

**California Parks**

**This letter is in support of alternatives 2 or 4 in the project area of the Upper Truckee River Restoration project. We live on the tee box of hole 5 at the Lake Tahoe Golf Course and have been here since 1976.**

**We have just completed (for the 10th consecutive year) hosting 30 golfers from the Painted Desert Men's Club in Las Vegas here in South Lake Tahoe. They play golf at Lake Tahoe Golf Course for two days and at Genoa Lakes another. They stayed at Harvey's and Embassy Suites, and the trickle down effect is obvious. The women non golfers went on a boat cruise, ate meals at local restaurants, and shopping is always a part of their stay.**

**This 3 day tournament would not occur if the Lake Tahoe Golf Course was not a fully developed 18 hole championship course. There are plenty of other places where they could play to get out of the Vegas heat during August, but they love this little basin that the Lake Tahoe Golf Course is in, with its fresh air and beautiful sunshine and pine smell.**

**We strongly support the control of erosion and the change of design necessary to do so, but also strongly support either alternative 2 or 4 with preference of #2. We in this economy need to keep this golf course a full 18 holes. The number of people enjoying this recreation of golf as opposed to the number of people hiking and horse back riding in the proposed area of relocation of the nine holes far outpaces the latter, and the ripple effect on the economy should be reason enough. The bang for the buck in this state park is also compelling, which should**

I206-1

be an obligation to this project.

The area is also used in the winter time by walkers and some bike riders in the fall after the golf course is closed for the season, and in the winter by cross country skiers, further enhancing the public use.

I hope you will give serious consideration to our support for the alternatives 2 or 4 and make all efforts to get the funding to fully complete the restoration as quickly as possible.

Thank you for your attention.

Sincerely,  
Dick and Wendy Shehadi

1206-1  
cont.

I206-1

The commenters' support for Alternatives 2 and 4 and the economic value of keeping an 18-hole golf course is noted. This comment does not raise issues regarding the adequacy, accuracy, or completeness of the draft EIR/EIS/EIS.

Lynda Shoshone  
838-A Wa-She-Shu Way  
Gardnerville, Nevada 89460

I207

November 15, 2010

Ms. Cyndie Walck  
California State Parks and Recreation Department  
Sierra District  
PO Box 16  
Tahoe City, CA 96145

My name is Lynda Shoshone, I am a Washoe Tribal member. I am submitting these comments on the Draft Environmental Impact Report (EIR)/Environmental Impact Statement (EIS) on the Upper Truckee River Restoration and Golf Course Reconfiguration Project. In my comments I will explain to you why I feel that Washoe Meadows State Park should remain in its natural state and I urge you not to encourage or allow multiple holes of the Lake Tahoe Golf Course to be moved into the Park. I support Alternative 3 or 5 in the EIS and I oppose Alternative 2.

I207-1

It has been documented scientifically that the Wa-She-Shu have lived our aboriginal lands for over 10,000 years (or forever in Washoe time), the wild land of the Park has been a place we the Washoe used for subsistence for our people. We gathered here, processed foods and participated in the rhythms of the seasons.

I have personal knowledge of the cultural resources within the footprint of Washoe meadows Park. I was involved in the survey that catalogued the cultural resources and the mitigation of the cultural sites, to find what was there for future protection. This is a rich cultural habitat; the resources are widely dispersed, not only localized. I am trained in observation and can recognize a unique and irreplaceable locale.

I207-2

My personal life in the park extends in my family through recent times through my son's grandfather. He shared with us the experiences of many decades when his family would come, decades before the Park was created, to gather and fish for subsistence. The abundance allowed fish to be caught in the skirts of our elders and tossed to the children waiting on the river banks. Washoe tribe members existed without scraping the land, but instead relying on the native plants, living in summer shelters of willows. Seeds and grains were processed without impact in vons with native stone grinding tools, evidence of this is still there, you can see all of the lams that are still within Washoe Meadows State Park.

There is no Plan for this park even in the context created by Anglo governance. It is not legal or ethical to "claim" the resources of this wild place for one "re-creation" purpose—golf—at the expense of other important values and purposes.

I207-3

Ms. Cyndie Walck  
November 15, 2010  
Page Two

In my vision, if the Park is left in its natural state, it can meet many values and purposes. This vision would include development of interpretive trails and signs to educate those interested on both ancient and post European settlement histories. I can foresee the Washoe language program being relied upon to help participants in the natural environment at look at the place and its history through a Washoe perspective. In addition, we will bring youth and elders here to share our histories and teach how it is possible to live lightly on the land.

1207-4

Through modern day development pursued relentlessly on private lands, more and more this history is lost daily, without mitigation or documentation of culture. The park is one place, a public place already legally set aside for permanent protection (**a unique and irreplaceable watershed**), where the state has the responsibility to act to continue preservation. There is no legal allowance and no moral latitude to do otherwise.

Therefore I urge that alternative 3 or 5 be implemented. A vibrant golf function and economy can be maintained in the State Recreation Area, consistent with protection of cultural resources and creative new activities in the State Park. Only after a planning process is conducted and a general plan agreed upon can the potential of this historically significant land be evaluated and addressed.

1207-5

As a member of the Washoe Tribe I oppose Alternative 2. Careful review of the EIR, as noted in comments of others, indicates that Alternative 2 is superior to Alternative 3 in many aspects for which the parks and the TRPA have responsibility.

Sincerely,

Lynda Shoshone  
Washo Tribal Member

- I207-1            The commenter’s support for Alternatives 3 and 5 and opposition to Alternative 2 is noted. This comment does not raise issues regarding the adequacy, accuracy, or completeness of the draft EIR/EIS/EIS.
- I207-2            The commenter discusses knowledge of historical use of Washoe Meadows SP. See Section 3.9, “Cultural Resources,” of the draft EIR/EIS/EIS for additional information about historical use of the area. See Master Response Section 3.6, “Cultural Resources,” for additional discussions related to the cultural impact analysis.
- I207-3            The commenter has concerns about land use. See Master Response Section 3.2, “Land Use,” for a discussion of land exchange.
- I207-4            The commenter would like to see interpretive trails and signs developed to educate those interested in both ancient and post-European settlement histories. The commenter suggests that the Washoe language program could help participants in the natural environment look at the place and its history through a Washoe perspective. State Parks is working with the Washoe Tribe to develop interpretive signs.
- I207-5            The commenter’s support for Alternative 3 or Alternative 5 is noted. This comment does not raise issues regarding the adequacy, accuracy, or completeness of the draft EIR/EIS/EIS.



I208

**Lake Tahoe Golf Course**

Fritz Siegenthaler [fritztahoe@hotmail.com]

**Sent:** Monday, November 08, 2010 12:09 PM

**To:** Project, Upper Truckee

---

Ruth Coleman  
Director of  
California Parks and Recreation Department  
1416 9th Street  
Sacramento CA. 94296

Regarding the Restoration Project of the Upper Truckee River.

I have attended to many meetings about this Project. There is only one Option making sense Economically, Environmentally, Habitat and to the Neighborhood it is Alternative 4. It does not matter what you do with the Golf Course the River will always be there and Erosion depends on runoff from snow melt and rain. By Moving the Golf Course, you still need to fix the erosion from the River not only on the Golf Course but all the way as the river runs. To move some holes behind the river will be too costly and increase the green fees not affordable for the players anymore, so even more golfers drive over the hill polluting the air for better deals in the Valley.

Many Golfers from out of town I have played with express there pleasure and beauty of this Golf Course. After explaining the plans, reasons and options to them as the California Parks and Recreation Department has, their are in disbelieve, but agree to leave this course unchanged and stabilizing the riverbanks makes sense.

Create a Filter Base between the airport and Highway 50 in Barton's Meadow. The river there is split in two all ready by nature so you can close and clean the streams one on the time in the fall by low runoffs. There will be no building in that meadow anyway and the Bartons may receive a tax break ?

I208-1

Sincerely,

Fritz Siegenthaler  
2248 California Str. 100  
Carson City NV. 89701

CC.  
utprject@parks.ca.gov

City Consuls Office  
South Lake Tahoe

I208-1

The commenter's support for Alternative 4 and its economic and environmental value is noted. The commenter suggests other options for treating water quality on properties not owned by the State. This comment does not raise issues regarding the adequacy, accuracy, or completeness of the draft EIR/EIS/EIS.

**River-Golf Course EIR/EIS/EIS**

Lisa Sinizer [sinizer@printroom.com]

**Sent:** Sunday, November 14, 2010 11:26 PM

**To:** Project, Upper Truckee

**Attachments:** EIR.docx (15 KB) ; EIR.doc (33 KB)

Also sent as an attachment in docx and previous Word versions:

November 14, 2010

I am not a religious person and like most people, my day is spent in the day-to day activities that keeps my house and family together and hopefully makes us a contributing part of the community. However I am lucky in that there have been a few moments in my life that have touched on the sacred in a transcendent way. Since I moved to the Washoe Meadows area, I have been thrilled to discover a place in my life where I can always attain that feeling of fulfilled peace and quiet joy. It is when I walk in the meadow area to the Upper Truckee River. Each time I note the small and big changes since I was last there- are there new flowers or perhaps the flow of the water has changed as the summer deepens. Maybe today I will be lucky enough to watch the coyote hunting in the grass. Often I will sit on a stump and watch as a snow storm comes in over the mountains or the pass and enjoy the changes around me. I am happy knowing that my teenage daughter finds the same beauty there and I am confident that this love of nature will be passed down to yet another generation when it is her time to introduce nature to her children. The entrance to the park from my neighborhood is in the lot next to my home and as I work in my office, I watch my neighbors on a daily basis throughout the day as they too begin the walk down to the meadow to enjoy the serenity and beauty that can be found there. Sometimes they go alone and other times in a group, but the intent is always the same, to go to the meadow to enjoy what it has to offer while they exercise.

It was with great shock that I discovered that there was a plan to take the beauty of this meadow and ruin it in order to hand it to a private developer so that he can change it for the use of a small (and with shrinking demographics) group that will make it impossible for any in the community that presently uses the park to enjoy nature. It is even more disturbing when one realizes that this is being done in the name of revenue, when in fact the state will not realize a dime for at least 10 to 15 years until the owner of American Golf has recouped his outlay. I have no issues and in fact am encouraged with the goal of restoring the river and lessening any impact sedimentation has on the lake. However, Alternative 2 has an impact that cannot be underestimated in the negative and cannot be feasibly mitigated.

There are many areas of the EIR/EIS/EIS which I find disturbing, but I will focus on just a few. Since discovering this potential plan, I have been paying close attention to who uses the park and what they are doing while I am there. I often go to the river near one of the golf bridges that currently exists. On one recent beautiful sunny Fall day on a three day weekend, I noticed several bikers, equestrians and hikers, but in all the time that I was near the golf bridge, not one cart passed me. This is not uncommon. While the course is obviously used, it would be VERY interesting as a valid part of data needed to make future use plans, to see if the course has had a declining revenue as most courses in the country have had for the last several years (even prior to the present economic downturn). I suspect that this course has indeed had declining revenues unlike other Tahoe sports such as skiing; I find it incomprehensible that the State Parks would take away a park from everyday citizens to hand it to a shrinking minority for the benefit of a privately owned corporation. Alternative 2 would indeed take this park away from California citizens.

In reading the EIR/EIS/EIS regarding recreational use and impact, I can only say that the EIR/EIS/EIS is inadequate at best and inept at worst. The very beauty of the meadow is because it is just that, an

I209-1

I209-2

amazing meadow which is surrounded by stands of trees. Even though it sees quite a bit of use, the view and silence there is majestically special and unlike anything I have experienced, even in other State Parks. If Alternative 2 were to go into effect, it would make recreation there impossible as it is enjoyed today. Those who presently use the park do so precisely because there are no motorized vehicles allowed. The EIR/EIS/EIS (wrongfully) contends that there would be recreation on both sides of the river. However present use shows that the hikers, bikers and especially the equestrians avoid any motorized vehicles for both esthetic and more importantly safety reasons. The impact as stated in section 3.8-2 as "Less than Significant" effect is in fact just the opposite because it will so alter our ability to use this park as to make it nearly unusable. We would no longer have access to the same areas, such as much of the forest, meadow and fen areas. The fens would be completely surrounded by the golf course and unavailable for enjoyment by park users. It is my contention and the contention of the Washoe Community that this is a significant unavoidable impact as no feasible mitigation exists.

I209-2  
cont.

The EIR/EIS/EIS states that there is much illegal snowmobiling in the meadow and on the golf course. Again, to show the inadequacy of the EIR, this statement can only be made by combining the supposed illegal use of the meadow in the winter with the illegal use of the golf course by snowmobilers. On most days, I walk from the small middle meadow to the river at the far end of the large meadow. The course I take generally runs from 2-3 miles roundtrip and during all of last winter, I only saw snowmobile tracks once or twice. If there is a major problem with snowmobiling in the golf course area, I don't understand why the park would want to expand the problem to an area greater than where it is today. There is a significant amount of trail for snowmobiling near to the meadow in the Sawmill area which can be used for that recreational purpose.

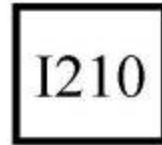
I209-3

Again, I appreciate the goal of restoring the river and lessening the runoff of sedimentation to the lake. However, it is impossible to see Alternative 2 as anything other than a shameful grab of a State Park to the loss of the majority of the users. As a member of the community, I can only hope that my legacy will be that in 50 years my grandchildren and great grandchildren will look at Washoe State Park and say, "Boy am I glad they had the foresight to save this special place for us" rather than having them look at pictures in an historical book of the beauty that used to be and wonder how we let it go.

Thank you for your time.

Lisa Sinizer  
1657 Grizzly Mountain Drive  
South Lake Tahoe, CA 96157

- I209-1                    The commenter expresses personal enjoyment of Washoe Meadows SP. The commenter has concerns about relocating the golf course considering the declining golf revenue. The commenter is also concerned about recreation access to Washoe Meadows SP and impact on the fen. As described in Appendix E, “Lake Tahoe Golf Course Economic Feasibility Analysis,” of the draft EIR/EIS/EIS, Lake Tahoe Golf Course has experienced declining gross revenues since 1997. See the following master responses:
- ▶ Master Response Section 3.3, “Biological Resources,” and Master Response Section 3.4, “Hydrology, Flooding, Geomorphology, and Water Quality,” for a discussion of potential impacts on the fen;
  - ▶ Master Response Section 3.5, “Recreation,” for a discussion of recreation access; and
  - ▶ Master Response Section 3.7, “Economics,” for a discussion of golf revenue.
- I209-2                    The commenter has concerns about the discussion in the draft EIR/EIS/EIS about recreation impacts and recreation access. Under Alternative 2, the new portion of the reconfigured golf course would remove 23 acres of Washoe Meadows SP from other recreational uses; however, Washoe Meadows SP totals 620 acres (including areas outside of the study area), and dispersed recreation would continue throughout the remaining 527 acres of the State Park. In addition, portions of the Lake Valley SRA that were previously occupied by the golf course (approximately 39 acres) would become available to trail users and water recreationists. The area outside of the driving range would also continue to be available during winter months, and access to this area would be improved because the bridge would no longer be gated. See Master Response Section 3.5, “Recreation,” for additional discussion of recreation access proposed under Alternative 2.
- I209-3                    As described in Section 3.8, “Recreation,” of the draft EIR/EIS/EIS, none of the alternatives are expected to result in an increase in illegal or legal use of snowmobiles within the study area.



**Alternative 2**

Carole Songey-Watson [songeystuff@gmail.com]

**Sent:** Monday, October 04, 2010 8:25 AM

**To:** Project, Upper Truckee

---

I strongly support Alternative 2 for the restoration and health of the Upper Truckee River System and Lake Tahoe in general. Thank you

| 1210-1

Carole Songey-Watson  
Property owner in South Lake Tahoe

Letter  
I210  
Response

Carole Songey-Watson  
October 4, 2010

---

I210-1

The commenter's support for Alternative 2 is noted. This comment does not raise issues regarding the adequacy, accuracy, or completeness of the draft EIR/EIS/EIS.





**FW: Golf Course**

McMillan-Hanly, Elizabeth

**Sent:** Tuesday, September 07, 2010 11:28 AM

**To:** Project, Upper Truckee

---

**From:** Walck, Cyndi

**Sent:** Thursday, August 26, 2010 11:10 AM

**To:** 'Seana Doherty'; kathy strain; 'Tracy Owen Chapman'; McMillan-Hanly, Elizabeth

**Subject:** FW: Golf Course

---

**From:** RonRSI@aol.com [mailto:RonRSI@aol.com]

**Sent:** Wednesday, August 25, 2010 10:44 AM

**To:** Walck, Cyndi

**Subject:** Golf Course

**As a local resident and golfer please keep our golf course 18 holes by using alternative #2 if making changes to the course.**

I211-1

**Thank You**

**Ron Spurrell  
2064 Aloha Dr, SLT. 96150**

I211-1

The commenter's support for Alternative 2 and keeping an 18-hole golf course is noted. This comment does not raise issues regarding the adequacy, accuracy, or completeness of the draft EIR/EIS/EIS.

## Upper Truckee Project Comment

Jim Stamates [jim@stamates.com]

**Sent:** Tuesday, November 09, 2010 11:31 AM

**To:** Project, Upper Truckee

I212

---

Cyndie Walck  
CA State Parks and Recreation,

Dear Cyndie,

As a 40 year resident of Lake Tahoe, a home owner in Meyers, and a local business owner, I want to add my concerns and opinions for the proposed changes to Washoe Meadows State Park, Lake Valley Recreation Area and Lake Tahoe Golf Course.

After reading the five alternatives I am convinced that Alternative No. 3 is most likely the best solution to keep all parties satisfied.

My position, in an ideal world, would be No. 5 which would decommission the golf course and return the Upper Truckee River and Washoe meadows closely to it natural state. This is really the best for the future of the clarity of Lake Tahoe and our environment. Of course I understand alternative 5 would not make golfers happy, and may cost California State Parks the reduction of a much needed income source as well as a hit on our local economy. However, if a new site can be acquired for a golf course in a less sensitive area then Alternative 5 is the best solution.

Alternatives 1 and 4 are unacceptable. They do nothing to correct or address the challenges.

Alternative 2 does not address the added usage of fertilizer, chemicals, and pesticides that will enter the SEZ and eventually our ground water and Lake Tahoe. Expanding ground cover defeats the whole purpose of our challenge to return clarity to Lake Tahoe.

The only balanced alternative is no. 3. Not the ideal solution for the environment or golf enthusiasts but a good solution that balances both sides.

Thank you for taking my comments into consideration.

Jim Stamates

P.O.Box 550550  
South Lake Tahoe, CA 96155  
530-577-4101

I212-1

I212-1

The commenter's support for Alternative 3 or Alternative 5 is noted. The commenter has concerns about fertilizer and pesticide impacts under Alternative 2. See Master Response Section 3.4, "Hydrology, Flooding, Geomorphology, and Water Quality," for a discussion of water quality impacts.



To Whom it may concern, Nov. 3, 2010

I want the park to remain the way it is. People, local people and wildlife enjoy this space. Please do not wreck it for the sake of commerce and profit with at golf course. | I213-1

Thank you  
Kim Stephenson  
1668 Semat St.  
So Lk. Tahoe, CA.  
96150

I213-1

The commenter's support for keeping Washoe Meadows SP as it is now is noted. This comment does not raise issues regarding the adequacy, accuracy, or completeness of the draft EIR/EIS/EIS.

I214

**Option 4 - My 2 cents**

ROBERT STILES [captrim99@hotmail.com]

**Sent:** Thursday, October 28, 2010 7:23 PM

**To:** Project, Upper Truckee

I'm for you to do option 4. Fix the banks of the river for now. Too costly to move all 9 holes in my opinion. I'm not a golfer but if you want to take more money out of our local economy it would not be a good idea to get rid of the golf course either. Stupidest thing I've heard of besides tearing out two lanes of Lake Tahoe Blvd out past the Y.

I214-1

Regards,

Robert Stiles

**ROBERT STILES**  
**Broker Lic. 01279125 CA**  
**Tahoe Real Estate Services**  
**2122 Lake Tahoe Blvd.**  
**S. Lake Tahoe, CA 96150**  
**877-617-2498 Office**  
**530-314-0352 Cell**  
**530-542-1849 Fax**  
[www.BobStiles.com](http://www.BobStiles.com)  
[robert@bobstiles.com](mailto:robert@bobstiles.com)





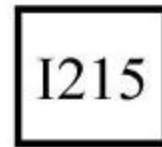
Letter  
I214  
Response

Robert Stiles  
October 28, 2010

---

I214-1

The commenter's support for Alternative 4 and its economic value is noted. This comment does not raise issues regarding the adequacy, accuracy, or completeness of the draft EIR/EIS/EIS.



**Lake Tahoe Golf Course River REstoration**

Keri L. Strategier [keristrat@hotmail.com]

**Sent:** Saturday, October 30, 2010 2:44 AM

**To:** Project, Upper Truckee

---

I support Option #2.

| 1215-1

Thank you. Keri Strategier

I215-1

The commenter's support for Alternative 2 is noted. This comment does not raise issues regarding the adequacy, accuracy, or completeness of the draft EIR/EIS/EIS.

## Washoe Meadows State Park Development

Martha Sullivan [mharsul@att.net]

**Sent:** Saturday, September 04, 2010 10:28 AM

**To:** Project, Upper Truckee

I216

Please hear my voice as I join the legions of Tahoe resident who are vehemently opposed to any and all aspects of the proposed development of Washoe Meadows State Park that reconfigure or expand Lake Tahoe Golf Course. That the proposal is even being considered is a travesty and is in direct violation of the original purpose and function of Washoe Meadows State Park, which was originally conceived in 1984 to protect "an environmentally sensitive parcel." That parcel comprises wetlands, meadows and wildlife habitats. It protects "a unique and irreplaceable watershed through which the Upper Truckee River supplies approximately 40 percent of the water flowing into Lake Tahoe." Water, which, if the golf course reconfiguration is approved, will be more contaminated through pesticides and fertilizers that penetrate into the groundwater that seeps into the river and is airborne to alight in the river. Nothing has changed since 1984 to warrant the original objectives for the Park now to be overridden.

It is unfathomable to me that anyone, especially an official public body entrusted with the preservation and care of invaluable open space and natural resources, could even conceive of expanding the existing golf course and at the same time purport to act in the best interests of the community and the Tahoe region as a whole. As a resident of the area immediately adjacent to the west side of the Park, I see bears, coyotes, innumerable small mammals, amphibians, reptiles, varieties of raptors and birds too numerous to identify, and waterfowl of all kinds on a daily basis. I see the fish that live and spawn in the river and sustain the non-aquatic wildlife. I see hundreds of visitors and residents alike strolling the Park's paths and standing in its meadows, agog at the vistas there to behold, and fishing and swimming in the river. In the spring and summer, there are wildflowers too beautiful to describe that stand tall and delicately carpet the meadow and floors.

I216-1

Sadly, due to failure of state officials to enforce the rules of the park, I also hear the snowmobiles and other motorized vehicles that invade the sanctity of the park and destroy the fragile forest and meadow trails. Must we now endure more failure of the state to regard its own objectives for the Park and compromise one of the basic reasons why we live in South Lake Tahoe and why the vast majority of visitors to the region choose this area as their place to worship the wonders of nature through passive recreation?

If the golf course is expanded across the river, not only will more wildlife habitat be eroded, but the State also risks forcing the large mammals into neighborhoods that now, for the most part, peacefully co-exist with us. There is no rational explanation why the State would knowingly encourage human-to-bear encounters. We read weekly of such experiences in other, more densely populated areas of the Tahoe region that usually result in the destruction of the offending bears. Such encounters in the residential areas surrounding the Park are very few and far between, largely because there is sufficient habitat. The more humans encroach on their habitat, the greater the likelihood that the bears will suffer. In what universe is that justifiable, simply for the sake of human recreation that is not integral to or compatible with the natural environs?

I216-2

In considering the various proposals for the Park land, golfing is not a recreational activity that, in and of itself, attracts visitors to the Tahoe region. It is but a sidelight to the main attractions of open space, natural grandeur and passive outdoor recreational activities. The revenue generated for the state through golf course patronage is but a pittance in the overall financial scheme, and, in fact, patronage at Lake Tahoe Golf Course has declined steadily in recent years. The course already is a losing proposition:

- Fees at the course are high, and locals cannot afford to golf there, so its survival is primarily dependent upon tourists, whose use of the course is but incidental to other area recreation.
- We personally witness the rebuilding of its existing greens, fairways, ponds and irrigation wells each year, because golf courses are not compatible with the natural topography and require repetitive and environmentally damaging reconstruction.
- If the course is reconfigured to abut more fairways along the river's banks, the river will experience even greater contamination than it is now exposed to, simply in order to continue

I216-3

the futile cycle of maintenance and reconstruction that is the norm for this golf course.

- The more maintenance that is required, the higher the fees that will need to be charged to golfers, and – ultimately – the less the course will be patronized.

I agree that it makes environmental sense to allow the Upper Truckee River to again flow its natural course and to rebuild its banks that have been eroded since its route was reconfigured some years ago. It makes absolutely *no sense in any respect*, however, to destroy and waste natural resources in favor of nonessential recreation in this area. As a fulltime resident whose property is immediately adjacent to Park land and whose taxes support responsible government, any aspect of the river restoration project that includes reconfiguration of the golf course to encroach on the Park land should be dismissed without further consideration.

1216-3  
cont.

Respectfully,

Martha Sullivan  
817 Kiowa Drive  
South Lake Tahoe, CA 96150  
530-573-1899

- I216-1                    The commenter’s opposition to any development at Washoe Meadows SP that would reconfigure or expand the golf course is noted. The commenter believes that Alternative 2 is inconsistent with the settlement agreement from the 1984 litigation and the 1984 statute and that Alternative 2 would have impacts on water quality, recreation, and wildlife. See the following master responses:
- ▶ Master Response Section 3.2, “Land Use,” for a discussion of the 1984 agreement and statute;
  - ▶ Master Response Section 3.3, “Biological Resources,” for a discussion of wildlife impacts;
  - ▶ Master Response Section 3.4, “Hydrology, Flooding, Geomorphology, and Water Quality,” for a discussion of water quality impacts; and
  - ▶ Master Response Section 3.5, “Recreation,” for a discussion of recreation impacts.
- I216-2                    The commenter has concerns about impacts on wildlife habitat. See Master Response Section 3.3, “Biological Resources,” for a discussion of wildlife.
- I216-3                    The commenter states opinions about golf recreation, economics, and upkeep of the golf course and opposes Alternative 2. This comment does not raise issues regarding the adequacy, accuracy, or completeness of the draft EIR/EIS/EIS.

The debate swirling around the Upper Truckee River Restoration and Golf Course Reconfiguration Project is not a debate about river restoration. All participants support this end. It's not even a debate between golfers and environmentalists. Few, if any, deny the right of the golfers to play on the current Lake Tahoe Country Club. This debate is rapidly becoming a confrontation between three state and local agencies, and concerned locals and neighborhood groups like the Washoe Meadows Community. The involved agencies are showing an undo bias toward Alternative 2, advocating golf course expansion. They appear ready to do this by ignoring preeminent laws protecting sensitive land, historical and cultural sites, diminishing animal and plant habitat, and quiet and peaceful local neighborhoods.

Aside from the obvious indifference to their own environmental standards, misleading the public about their intentions, and ignoring input from their own constituents, this is being pushed at a time of decreasing popularity in golf. The Environmental Impact Report or EIR clearly details the declining revenues of the current State Recreation Area's activities. And unless Global Warming overwhelms us sooner than expected, Tahoe's fragile golf season is not going to get any longer.

It's quite clear the State Parks, TRPA, and Bureau of Reclamation, are stretching their powers here by ignoring their own history of written intentions and guidelines. The land in question, is bordered roughly by Hwy 50, North Upper Truckee Rd., Sawmill Rd, and Tahoe Paradise. It was purchased by the state in 1984. The 1984 California Legislative Statute appealed for the purchase using taxpayer dollars. They called it an act of urgency; "in order to acquire as state lands an environmentally sensitive parcel of approximately 777 acres of land comprising wetlands, meadows, and wildlife habitat for the purpose of protecting a unique and irreplaceable watershed". The parcel contained an existing golf course to the East, and a fragile and diverse piece of land to the West. Separating the two, was the main tributary of Lake Tahoe, the Upper Truckee River. The side containing the golf course was designated a State Recreational Area, and the land across the river, bordering numerous neighborhoods along North Upper Truckee, was designated as a state park, originally named Washoe Meadows Wildlife Refuge.

I217-1

Here, in the words of the agencies most zealous for expansion, are the reasons Alternative 2 displays a contemptuous disregard of their own standards of stewardship. According to the States' own Unit Purpose Statement adopted in 2000 "the purpose of the Washoe Meadows State Park is to preserve and protect a wet meadow area associated with Angora Creek and the Upper Truckee River at the southwest side of the Tahoe Basin. The unit's associated forest sustains Jeffrey ...and Lodgepole pine. The unit contains 14 Native American occupancy sites and remnants of a historic dairy, and is contiguous to other public lands important for their open space values and recreational uses." Consider this statement comes before the Angora fire. It should be apparent how much more important these forests and wetland areas become as a habitat for indigenous wildlife and plants.

The Plan Area Statement of the TRPA Code of Ordinances says this about "PAS 119" (Country Club Meadow), "the following special policies ...apply to the study area:

- Areas of significant resource value or ecological importance within this Plan Area should be designated as natural areas, and they should be buffered from intensive uses.
- Creation of waterfowl habitats in association with restoration efforts of disturbed areas should be encouraged.
- Intensive uses in this Plan Area that require development of impervious coverage should be discouraged.

The agencies now argue some of these areas have been “previously disturbed”, thus implying it is acceptable to disturb them again. That’s like saying since a bank has been robbed it’s acceptable to rob it again.

What these agencies must remember is that the land in question is theirs to protect, not abuse. While they have been designated guardians of this sensitive and precious parcel of PUBLIC land, it is not theirs. The land belongs to all of us! We must let them know how we feel. Ways to comment are available at [www.washoameadowscommunity.org](http://www.washoameadowscommunity.org).

Steve Szekely  
(530)577-7207  
dixiemtn@sbcglobal.net

1217-1  
cont



I217-1

The commenter's opinion that an undue bias has been given to Alternative 2 is noted. The commenter believes Alternative 2 is inconsistent with the settlement agreement from the 1984 litigation and the 1984 statute. See Master Response Section 3.2, "Land Use," for a discussion of the 1984 litigation and statute. See response to comment AOB8-1 for discussions of the selection of a proposed Preferred Alternative and of the public participation process.

I218

**comment**

Shirley Taylor [thecelioranch@gbis.com]

**Sent:** Tuesday, September 14, 2010 6:34 AM

**To:** Project, Upper Truckee

---

In your description of all the things that have led to the problems with lake clarity, you forgot to mention the "BEAVER".

The lake was in very good condition before all the development occurred. Don't blame all the problems on the "history" of this area.

I218-1

Shirley Taylor

I218-1

The commenter believes that beavers are a factor in the decline of lake clarity. American beaver has not been identified as a major factor contributing to the decline of lake clarity. Development, as noted in the comment, is certainly a major contributor to alterations in streamflow and sediment transport, leading to declines in clarity.

**Washoe Meadows State Park**

Anne Thomas [athomas@mcn.org]

**Sent:** Monday, November 15, 2010 10:13 AM

**To:** Project, Upper Truckee



---

To Whom It May Concern:

My husband and I lived in the Tahoe area for many years. In recent decades, we have seen some wonderful restoration projects and good plans coming out of public agencies. We urge you to continue on this path by choosing Alternative 3 for restoration of the Upper Truckee. While golf may be the pastime of the rich, its popularity is decreasing, and there is a greater public awareness of the incompatibility of developed golf courses and natural wildlands. Please save the Park from the incursion of the golf course, and simply act to reduce the existing golf course to a more ecologically sustainable size. This action would have a far more beneficial effect on the Park, Lake Tahoe, and the enjoyment of the majority of people who live in and come to the area for its natural beauty.

I219-1

Sincerely,

Anne Thomas  
Former Lake Tahoe resident and teacher

I219-1

The commenter's support for Alternative 3 because of the decline in the popularity of golf is noted. This comment does not raise issues regarding the adequacy, accuracy, or completeness of the draft EIR/EIS/EIS.

**new golf course**

kthompson [kthompson@tahofire.com]

**Sent:** Wednesday, September 01, 2010 8:46 PM

**To:** Project, Upper Truckee



---

In response to the e-mail I recieved, I don't wish to have the golf course changed. But I also don't want to lose it either. The golf course is very important to community, and losing it along with everything that Tahoe has lost would be tragic. I also thought that this is a California State Park and it is for all Californians and other visitor to used. I've also heard that it is helping the state with the funds that it generates. I saw picture of the reconfiguration and it looked very well constructed. To be honest I'm one of the few people that use the golf course and walk my dog in the park on regular basis. Losing the golf course I feel would be a lose, lose situation for the town and all our visitor that our community so desparately needs!

1220-1

Thanks for all your help. I know it's been hard.

Kirk Thompson

I220-1

The commenter's support for maintaining the golf course is noted. This comment does not raise issues regarding the adequacy, accuracy, or completeness of the draft EIR/EIS/EIS.



**time is coming!**

kthompson [kthompson@tahofire.com]

**Sent:** Wednesday, October 20, 2010 5:38 PM

**To:** Project, Upper Truckee

Dear decision makers,

I'm am writting again to express my feeling one more time. I' have seen a lot of letters in tahoe papers to the bad effects he golf course will have if it's moved back behind the river. I don't feel it fair to that you are asking people of the neighborhood that are non-golfer there feeling about the park. Of course they would say get rid of the golf course, especially if they done own a business in town that benifits from all the extra income the golf course bring to So. Lake Tahoe. (Been getting less more and more) Most of the people that are complaining will probably not be here 10, 15 and 20 years down the road. But the 10 of thousands of people that would get the enjoyment out of the recreation of golf, the out door weddings and the family and friend that meet at the golf course on a regular basis for decades to come.

I personally don't owe a business in town, I am retiring from the Fire Dept., weve lived down the street from the park and golf course (92) with 31 years in Tahoe. We are probably of a minority group that uses the golf course and the park on a regular basis (dogs and x-country skiing) we rarely see anyone out on our trips to the back country, but the golf course is always full with people using the facility 6mo. out of the year. During our retirement we had plans to still use both facilities.

I know that the neiborhood groups have been fighting this hard and long cause I live around them, but who get to speak for the people that have vacationed in Tahoe for generation thoughs people need a voice too! I have never once had someone stop me ask me where the park is so they could hike back there,that because no one knows it's there except for the neighborhood and thats the they want to keep it. I always try to remember that it's a California State park, for all Californians and vacationers. Not a neiborhood state park that only for the very few that know about it can use. We love the recreation that Tahoe has, and golf is a huge part of our families and thousands of other families that don't even know that this is going on!

Hopefully we can come to a win, win decision!

Thanks Kirk Thompson.

I221-1



I221-1

The commenter's support for maintaining the golf course and the recreation value to all Californians is noted. This comment does not raise issues regarding the adequacy, accuracy, or completeness of the draft EIR/EIS/EIS.

**restoration project**

maddelyn thran [maddelynthran@yahoo.com]

**Sent:** Thursday, September 02, 2010 4:57 PM

**To:** Project, Upper Truckee



---

Hello,

My name is Maddelyn Thran. I was born and raised in South Lake Tahoe. In particular I was raised on north upper truckee and spent most of my childhood in the meadow and at the river. We found many golfballs in the river as kids. As a child I thought that was great fun to have a golfcourse so close to the river and be able to find balls at the bottom of the riverbed. However, it has become clear to me now that it is much more important to help our animals by keeping their habitat in homeostasis. Our animals need to be able to stay in their natural habitat so they don't migrate towards the residential area surrounding the meadow. This project would not only destroy their habitats but much of the beauty we love about our wonderful Tahoe meadow.

Thanks for your time,

-Maddelyn Thran

1222-1

I222-1                      The commenter has concerns about impacts on wildlife. See Master Response Section 3.3, “Biological Resources.”

**Upper Truckee River**

Jane [jane345@att.net]

**Sent:** Saturday, October 30, 2010 10:19 PM

**To:** Project, Upper Truckee



---

Please support Alternative 2, which provides a solution that balances both recreation and conservation in the area.

| I223-1

Thank you,  
Jane Turney

Letter  
I223  
Response

Jane Turney  
October 30, 2010

---

I223-1

The commenter's support for Alternative 2 is noted. This comment does not raise issues regarding the adequacy, accuracy, or completeness of the draft EIR/EIS/EIS.

October 29, 2010

To: Cyndie Walck, California State Parks

From: John Upton

Subject: Comments on Upper Truckee River Restoration and Golf Course Reconfiguration Project Draft EIR/EIS.

1. I support Alternative #2 as the best balance for recreation, the economy, and much-needed environmental improvements.

The current Lake Tahoe Golf Course (LTGC) fills a unique niche in golfing recreation in the South Lake Tahoe area: It is an affordable, quality 18-hole course. The other 18-hole course in South Lake Tahoe is Edgewood, which is not an affordable option for users of LTGC. If the 18-hole LTGC is not there, its local users (10,000 rounds per year) will go to the affordable courses in Minden or Carson City. The tourism users (20,000 rounds per year) will do the same, or not vacation in the area at all.

2. The above facts lead to why Alternative 3 (reduction of LTGC to 9 holes) is economically infeasible, and worse than it may appear: That is, a 50% reduction in holes will result in a lot more than a 50% reduction in course revenue.

Two 9-hole low cost golf courses already exist nearby – Tahoe Paradise (2 miles away) and Bijou Municipal (7 miles away.) The needs of 9-hole golfers are already met by them, so that the effect of Alternative #3 would be to divide existing business among three courses instead of two. The current positive economic impact and direct/indirect job creation from the 18-hole LTGC course would essentially be entirely lost.

There is unlikely to be enough revenue to properly maintain the remnant facility from Alternative #3, much less provide surplus funds to the State. It is likely that inadequate maintenance will include inadequate maintenance of the new EIP (Environmental Improvement Program) river restoration facilities, which will also have negative environmental impacts.

It is my understanding that the existing operator has informed the State that it would not be interested in bidding on a 9-hole course. As they have operated the course for over 20 years, and know their customer base, this fact should confirm that Alternative #3 makes no economic sense.

3. One suggestion for Alternative #2, if possible, would be to direct that net revenues from the facility to the State be used for maintenance of State EIP facilities in the Tahoe Basin.
4. Please select and construct Alternative #2!

Thank you for considering these thoughts.

John Upton  
954 Edgewood Circle  
South Lake Tahoe, Ca. 96150

I224-1

I224-1

The commenter's support for Alternative 2 and its economic, environmental, and recreation value is noted. This comment does not raise issues regarding the adequacy, accuracy, or completeness of the draft EIR/EIS/EIS.



**FW: LTGC - Please Be Heard - State Park Alternatives for our Golf Course**

McMillan-Hanly, Elizabeth

**Sent:** Tuesday, September 07, 2010 11:25 AM

**To:** Project, Upper Truckee

**Attachments:** LTGC - Please Be Heard - Stat... (14 KB)

---

**From:** Walck, Cyndi

**Sent:** Friday, August 27, 2010 5:00 PM

**To:** 'Seana Doherty'; McMillan-Hanly, Elizabeth; 'Tracy Owen Chapman'; kathy strain

**Subject:** FW: LTGC - Please Be Heard - State Park Alternatives for our Golf Course

---

**From:** USERRAMP [mailto:userramp@aol.com]

**Sent:** Tuesday, August 24, 2010 8:15 PM

**To:** Walck, Cyndi

**Subject:** Fwd: LTGC - Please Be Heard - State Park Alternatives for our Golf Course

I agree with number 2.

| 1225-1



Letter  
I225  
Response

userramp  
August 24, 2010

---

I225-1

The commenter's support for Alternative 2 is noted. This comment does not raise issues regarding the adequacy, accuracy, or completeness of the draft EIR/EIS/EIS.

## Upper Truckee River Restoration

scott valentine [valentinescott@hotmail.com]

**Sent:** Sunday, October 17, 2010 11:02 PM

**To:** Project, Upper Truckee

I226

Thank you for contacting me about the comment period for the Draft EIR/EIS. I would like to start by saying that I am a supporter of Upper Truckee River Restoration. I have worked on various river restoration projects with the US Forest Service in the past and I have a hydrology degree so I fully understand the importance of restoration in this instance. I feel that there will be an observable and measurable improvement in water quality, riparian habitat, and ecosystem connectivity if this river segment is restored. I also understand that the land use shift associated with this restoration will have significant social impacts as well, which is why I am a supporter of Alternative #2.

Even though I live within City limits I regularly recreate in Washoe Meadows Sate Park. I do not play golf but I understand the importance of this type of recreation and I realize its social and economic significance for Lake Tahoe and for State Parks. I feel that the land swap associated with Alternative #2 (moving the golf course out of the Stream Environment Zone and relocating it to the upland forest west of the river) is justified. The ecologic importance of the stream corridor and adjacent meadow vastly outweighs that of the upland parcel in question (which in my professional opinion is poor quality habitat already degraded by the fact that it was historically disturbed and has never fully recovered).

I226-1

I support Alternative #2 but I would like to make a few comments regarding Alternative #2 during this comment period. Firstly, I appreciate that the new bridge crossing is designated as a pedestrian safe zone but to be fully safe (from cart traffic, miss aimed balls, etc.) I would like to suggest a second bridge, built within the restoration project area a few hundred feet downstream of the proposed bridge crossing. The second bridge would fully separate pedestrian and bicycle traffic from all other associated golf course use. This improves safety but it also serves to inhance the "outdoor feel" for those visitors wishing to wishing to experience the State Park without having to navigate through the golf course environment. Trails would then have to be realigned to separate golf traffic from pedestrian traffic.

I226-2

If two bridges are not possible it might be worth considering moving the river crossing to the border of the golf course and the proposed restoration area downstream of Hole 14 (this would be in reference to the configuration illustrated in the Alternative #2 map found in the Draft EIR/EIS). The trail would then follow the border between the golf course and the newly restored stream zone. This compromise could improve safety, but it would mainly minimize the trail visitor's (walkers and bikers) exposure to golf course activities and also enhance their recreational experience.

Secondly, State Parks should assume that recreational boat use along this reach will increase. This is not adequately addressed in Impact 3.8-4 (in 3.8-25 of the Draft document). "Build it, and they will come" is a standard phrase used among restoration hydrologists and ecologists. While this generally refers to the biological components of restoration it should also be applied to humans and their desire to recreate. The park might see increased visitation due to restoration and some of that may come in the form of river recreation. Many floaters launch their crafts downstream of the project site at Elk's Club, but with restoration the upstream reach (Hwy 50 bridge to Elk's Club) will likely see increased boat traffic. State Parks may want to consider how

I226-3

river recreationalists are going to assess the river (legal or illegal). In the future State Parks may also want to address issues related to river safety (i.e. identifying existing hazards such as log jams or more importantly by preemptively analyzing the hazards that would be created for restoration purposes such as grade control or debris structures). The Draft EIR states that informal water-related recreation will be allowed to continue under all the alternatives but it doesn't necessarily address increased usage caused by restoration. Build it...and they will come... legally or illegally... and State parks should think about their next step if restoration becomes a viable option.

1226-3  
cont.

I hope to see this project evolve over time. I hope informed decisions make river restoration a reality. If you have any questions or concerns please feel free to contact me,

Scott Valentine  
Earth Science Department Chair  
Lake Tahoe Community College  
(530) 541-4660 ext 313

- I226-1            The commenter’s support for Alternative 2 and its water quality, riparian habitat, ecosystem, and economic value is noted.
- I226-2            The commenter suggests options for a separate recreation bridge under Alternative 2. See Master Response Section 3.5, “Recreation,” for a discussion of recreation access.
- I226-3            The commenter believes that with project implementation, boating will increase along the segment of the Upper Truckee River where adjacent portions of the golf course are removed. State Parks acknowledges that boating could increase along some areas of the Upper Truckee River because of improved access to the river related to relocation of golf course features and construction of a new trail within the study area that would improve overall public access. However, the potential increase in boating is not expected to be substantial because the river is currently navigable by small craft (e.g., rafts, canoes, and kayaks) through the study area, and no substantial changes would be made to enhance boating access to this portion of the river (e.g., boat ramps). The minor improvements are expected to have a beneficial effect on recreation because there would be improved access for boating. As stated in Section 21002.1(e) of the State CEQA Guidelines, lead agencies shall, in accordance with Section 21100, focus the discussion in the EIR on those potential effects on the environment of a project that the lead agency has determined are or may be significant. Lead agencies may limit discussion on other effects to a brief explanation as to why those effects are not potentially significant. In addition, NEPA states that agencies shall focus on significant environmental issues and alternatives (40 CFR 1502.1). Because the increase in boating is not expected to be significant and improved access to the river would be a beneficial effect on recreation, the discussion provided in the draft EIR/EIS/EIS was limited. State Parks will continue to manage recreation along the portion of the river within its jurisdiction; if the project were implemented, State Parks would implement measures as needed to ensure recreation safety. The proposed Preferred Alternative would remove existing temporary stabilization features that currently pose hazard risks to boaters (i.e. rebar). However, downed logs and other woody debris would remain a part of the natural system. See Master Response Section 3.5, “Recreation.”

**Upper Truckee River Restoration & Golf Course Reconfiguration Project  
EIS Comment**

I227

cindy van arnum [cva2tahoe@sbcglobal.net]

**Sent:** Friday, October 08, 2010 2:06 PM

**To:** Project, Upper Truckee

---

Hi Cyndie Walck,

My name is Cindy Van Arnum and I have lived in Tahoe for the past 35 years.

I have heard about the Upper Truckee River Restoration and Golf Course Reconfiguration Project and know from the executive summary of the environmental documents that some of the goals of the project are to:

- Restore the river to a functional state
- Restore the streamside and meadow habitat
- Reduce the amount of nutrients and sediment entering Lake Tahoe
- Create a continuous wildlife corridor along the river
- Preserve all sensitive plant and archaeological sites
- Maintain quality golf recreation opportunities

I believe **Alternative 2** is the best alternative for our community and the environment because of the following reasons:

- It provides a complete restoration of the river and surrounding meadow habitat
- It will improve lake clarity by reducing nutrients and sediment flowing into Lake Tahoe
- It keeps the only affordable, regulation size, 18-hole golf course in Lake Tahoe open by moving 9 holes to a currently available area outside the river flood plain
- The area where the holes will be moved is not pristine and the land swap will give Washoe Meadows State Park a better piece of land along the Upper Truckee River
- The local golf course is critical to our local economy. It provides jobs, needed revenue for California State Parks and adds \$6 million dollars to our local economy each year
- Lake Tahoe Golf Course is used by many locals, including our high school golf teams, and by visitors to Lake Tahoe

We need to vote for alternative 2 as it is the only alternative in which every side wins....the environment, the local economy, and outdoor recreation.

Thank you for your consideration,  
Cindy

I227-1

Letter  
I227  
Response

Cindy Van Arnum  
October 8, 2010

---

I227-1

The commenter's support for Alternative 2 and its economic, environmental, and recreation value is noted. This comment does not raise issues regarding the adequacy, accuracy, or completeness of the draft EIR/EIS/EIS.



**FW: cost**

McMillan-Hanly, Elizabeth

Sent: Tuesday, October 05, 2010 12:31 PM

To: Project Upper Truckee

---

**From:** Walck, Cyndi  
**Sent:** Friday, September 24, 2010 9:09 AM  
**To:** McMillan-Hanly, Elizabeth  
**Subject:** FW: cost

Please send this response

River and floodplain restore prob about 5 million--grants  
Golf course relocate prob about 500,000 per hole, golf course concession contract.  
Estimates only

---

**From:** Project, Upper Truckee  
**Sent:** Wed 9/8/2010 11:18 AM  
**To:** Walck, Cyndi  
**Subject:** FW: cost

---

**From:** whusett@bergencapital.com [mailto:whusett@bergencapital.com]  
**Sent:** Wed 9/8/2010 10:46 AM  
**To:** Project, Upper Truckee  
**Subject:** cost

If you went with alternative #2, what is the cost, and how do you raise it? WALTER

| 1228-1

This message is intended only for the addressee. Bergen Capital is a division of Scott & Stringfellow, LLC (member NYSE/STPC), a w

Letter  
I228  
Response

Walter  
September 8, 2010

---

I228-1                      The commenter questions how Alternative 2 would be funded. See Master Response Section 3.7, "Economics."



**FW: LTGC - Please Be Heard - State Park Alternatives for our Golf Course**

1229

McMillan-Hanly, Elizabeth

**Sent:** Tuesday, September 07, 2010 11:37 AM

**To:** Project, Upper Truckee

---

**From:** Walck, Cyndi

**Sent:** Thursday, August 26, 2010 10:41 AM

**To:** kathy strain; McMillan-Hanly, Elizabeth; 'Seana Doherty'; 'Tracy Owen Chapman'

**Subject:** FW: LTGC - Please Be Heard - State Park Alternatives for our Golf Course

---

**From:** Kim Jean Weiss [mailto:weisstahoe@sbcglobal.net]

**Sent:** Thursday, August 26, 2010 7:12 AM

**To:** Walck, Cyndi

**Subject:** Fw: LTGC - Please Be Heard - State Park Alternatives for our Golf Course

I agree alt. 2 is the best.

| 1229-1

Steve Weiss

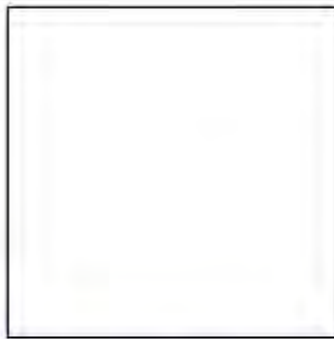
--- On Tue, 8/24/10, RonCRettus@aol.com <RonCRettus@aol.com> wrote:

From: RonCRettus@aol.com <RonCRettus@aol.com>

Subject: LTGC - Please Be Heard - State Park Alternatives for our Golf Course

To: RonCRettus@aol.com, hazlettdoug@gmail.com, brucepl@yahoo.com, frodo3645@yahoo.com, robrule666@gmail.com, bajaranorm@hotmail.com, laptahoe@charter.net, ktvt5893@sbcglobal.net, Katzino6@aol.com, fatjackf@aol.com, brentrichard52@sbcglobal.net, wdgstr@yahoo.com, blawrie1@hotmail.com, dancevisions@charter.net, rabarneson@hotmail.com, playmatters@live.com, d-scriptmedia@yahoo.com, michael.bolen@hotmail.com, jcopeland@kirkwood.com, paperplays.john@gmail.com, goodingt@charter.net, mapphantom@charter.net, rhaas40442@aol.com, Lheggen@gmail.com, fpiannetta@sbcglobal.com, peterilling@sbcglobal.net, rickkistler@yahoo.com, klatta59@aol.com, lkm1234@hotmail.com, boardhead7@charter.net, pattonmm@sbcglobal.net, bobcyn@sbcglobal.net, pricesrite@comcast.net, bernside@hotmail.com, lucystanton@netzero.com, astrain@vailresorts.com, muliana-mabe@att.net, Super@LakeTahoeGC.com, larry.hobson25@gmail.com, gm@laketahoege.com, rangelocci@earthlink.net, tahoebrown01@msn.com, Klatta59@aol.com, tmazz1@att.net, free1249@yahoo.com, blandejob99@yahoo.com, castellanos-law@sbcglobal.net, tdaniels@infostations.com, richiewoo60@yahoo.com, l\_ghobson@yahoo.com, sltalbrecht@sbcglobal.net, banderson51@charter.net, csintahoe@aol.com, smooks3@charter.net, buxbaz@sbcglobal.net, bbbett@aol.com, yesblonski@sbcglobal.net, timmerone@aol.com, gborst427@hotmail.com, royal@royalhydraulics.com, tahoesr71@yahoo.com, userramp@aol.com, ibpost@aol.com, bd06232000@netzero.net, pappou@aol.com, dgayner@charter.net, tahojim@aol.com,

anneke100@aol.com, zankiegooding@aol.com, L. lhobson@yahoo.com, curtis@hsrei.biz, georgene@hsrei.biz, hjuretschke@hotmail.com, rkrevcg@hotmail.com, mklover@pacbell.net, selinatap@yahoo.com, tmakris@pillsburylaw.com, dlmayer@aol.com, kylemazzoni@yahoo.com, tmaz1@att.net, ibegeo@aol.com, G.Mendel@sbcglobal.net, richtahoe@aol.com, john@mcgeemechanical.net, movasel@wamtahoe.com, to2299@sbcglobal.net, coachpatterson@sbcglobal.net, jerspeal@aol.com, piercefk@hotmail.com, tahoeradford@aol.com, Ragonese@charter.net, roncretus@aol.com, michaelpatrickrogan@gmail.com, jps423@att.net, srplumb@etahoe.com, drshehadi@cox.net, fritzahoe@hotmail.com, ronrsi@aol.com, stacpoole@sbcglobal.net, jstahl@ortc.com, toreno3@sbcglobal.net, weisstahoe@sbcglobal.net, crtwhelan@charter.net, gwiffy4@yahoo.com, wtahoemax@aol.com, nrwolf@prodigy.net  
Date: Tuesday, August 24, 2010, 7:12 PM



**Lets be heard !!!!!!!!**

**I would ask each of you that receive this e-mail to take one of two actions:**

**If you agree with it - Forward it to [CWalck@parks.ca.gov](mailto:CWalck@parks.ca.gov) with an "I agree" comment.**

**If you have different opinions or/and can take the time to express your individual thoughts on **what** you would like to see happen and **why**, then send your own individual e-mail to Ms. Walk**

**But we do have to be counted - there are groups other than golfers that are actively lobbying the State Parks organization to take action that will do away with our course or reduce it to 9 holes.**

**I believe the California State Parks should adopt Alternative 2.**

**This would restore the Upper Truckee River, enhance the surrounding wetlands/animal habitat and reduce silt flowing into Lake Tahoe while keeping our 18 hole golf course by moving 9 holes to a currently available area outside the river flood plain.**

**1. This alternative would keep an affordable, tournament level, 18 hole golf**

course. Affordable because it would not be the \$200- \$250 fees charged by Edgewood, and Tournament level vs the playable but "reduced level" of Tahoe Paradise executive type course.

2. The proposed new area (outside the flood plain) for the new 9 holes looks like a blight area today and our Lake Tahoe environment and ambience would be enhanced and improved with the movement of the new holes to this area.

3. Reducing our golf course to 9 holes or removing the course entirely will deprive us of a major recreation opportunity currently provided by our California State Parks. This is extremely biased against the many local golfers that live in the South Tahoe area.

4. Visiting golfers and Tournaments will not come to a golf destination vacation area for a 9 hole golf course.

The impact to our already fragile local economy would be negatively impacted by as much as \$6 - \$9 million dollars each year.

25,000 rounds a year - Between late April and early October

60% of these rounds from visitors at 1 round per visitor

15,000 visitors at 2 nights motel stay (\$150) = 2.25 million dollars

15,000 visitors at 5 meals (\$40) = 3.0 million dollars

Add 25 % for those who bring their families: 1.2 million dollars

**Revenues Potentially Lost to our local economy: 6.5 million**

**This does not include revenues to the golf course or California State Parks and Income to the 50-75 local people employed by the course**

5. Remember, our opinion (vote) is very important - The thousands of our visitors are removed from the issues and in most cases don't know what the current plans for the course could be.

6. If you are aware of visiting golfers, please forward this email to them.

**Please take the time to be heard - If not Us then who?**

Letter  
I229  
Response

Steve Weiss  
August 26, 2010

---

I229-1

The commenter's support for Alternative 2 and its economic, environmental, and recreation value is noted. This comment does not raise issues regarding the adequacy, accuracy, or completeness of the draft EIR/EIS/EIS.



## Upper Truckee River Restoration & Golf

Kim Jean Weiss [weisstahoe@sbcglobal.net]

**Sent:** Monday, September 27, 2010 8:23 PM

**To:** Project, Upper Truckee

---

To: Cyndie Walck, Sierra State Parks  
RE: Upper Truckee River Restoration & Golf Course  
Reconfiguration Project EIS Comment

I am a golfer and a resident of Lake Tahoe and I believe the California State Parks should adopt Alternative 2 as outlined in the draft EIS/EIR/EIR document because it is good for the river, the local community and yes, golfing as well.

The reasons why Alternative 2 is the best alternative:

- 1) It restores the Upper Truckee River, enhances the surrounding wetlands and animal habitat and reduces silt flowing into Lake Tahoe.
- 2) It keeps our 18-hole golf course open by moving 9 holes to a currently available area outside the river flood plain.
- 3) This alternative would keep the only affordable, regulation size, 18-hole golf course in Lake Tahoe.
- 4) The proposed new area (outside the flood plain) for the new 9 holes is currently a blighted area and putting 9 holes over there is a major improvement.
- 5) Reducing our golf course to 9 holes or removing the course entirely will deprive us of a major recreation opportunity currently provided by our California State Parks. This is extremely biased against the many local golfers that live in the South Tahoe area.
- 6) Visiting golfers and tournaments will not come to a golf destination vacation area for a 9-hole golf course.
- 7) The local golf course is critical to our local economy. The impact to our already fragile local economy would be negatively impacted by as much as \$6 million dollars each year if the golf course were removed.

We need to vote for Alternative 2. It is good for our community, our golfing and the river.

Thank you,

Steve Weiss  
Retired Parks and Recreation Manager

1230-1

Letter  
I230  
Response

Steve Weiss  
September 27, 2010

---

I230-1

The commenter's support for Alternative 2 and its economic, environmental, and recreation value is noted. This comment does not raise issues regarding the adequacy, accuracy, or completeness of the draft EIR/EIS/EIS.



**Washoe meadows**

John Williamson [FlyFisher@JohnSWilliamson.com]

**Sent:** Monday, November 15, 2010 4:00 PM

**To:** Project, Upper Truckee

---

Cyndie Walck,  
California State Parks and Recreation  
Sierra District

Dear Cyndie,

This is to submit my comment in regard to the alternatives offered on the Washoe Meadows Project. After review of information available I would like to support Alternative three. Although alternatives 2,3, and 5 all have an element of stream restoration, alternative three supports the economic position of the golf course.

Thank you for accepting my comment.  
John Williamson

I231-1

John S. Williamson  
Realtor®, Broker, ABR®  
River Pines Properties, Inc.  
California License #00762852  
530-836-0112 – Home Office  
530-836-0313 – Office  
530-836-1556 – Fax

*Many go fishing all their lives without knowing it is not the fish they are after..... Henry David Thoreau*





For real estate information in Plumas and Sierra Counties:  
[www.JohnSWilliamson.com](http://www.JohnSWilliamson.com)



Letter  
I231  
Response

John S. Williamson  
November 15, 2010

---

I231-1

The commenter's support for Alternative 3 is noted. This comment does not raise issues regarding the adequacy, accuracy, or completeness of the draft EIR/EIS/EIS.

**Upper Truckee River Restoration & Golf Course Reconfiguration Project EIS  
Comment**



Amber Wilson [a.wilson@new-life-nutrition.com]

**Sent:** Friday, October 08, 2010 1:57 PM

**To:** Project, Upper Truckee

---

Hi Cyndie Walck,

My name is Amber (Van Arnum) Wilson and I own a local nutrition counseling company. I grew up in South Lake Tahoe and my husband and I recently moved back to Tahoe. We were lucky enough to be married at the Lake Tahoe Golf Course last year.

I have heard about the Upper Truckee River Restoration and Golf Course Reconfiguration Project and know from the executive summary of the environmental documents that some of the goals of the project are to:

- Restore the river to a functional state
- Restore the streamside and meadow habitat
- Reduce the amount of nutrients and sediment entering Lake Tahoe
- Create a continuous wildlife corridor along the river
- Preserve all sensitive plant and archaeological sites
- Maintain quality golf recreation opportunities

I believe **Alternative 2** is the best alternative for our community and the environment because of the following reasons:

- It provides a complete restoration of the river and surrounding meadow habitat
- It will improve lake clarity by reducing nutrients and sediment flowing into Lake Tahoe
- It keeps the only affordable, regulation size, 18-hole golf course in Lake Tahoe open by moving 9 holes to a currently available area outside the river flood plain
- The area where the holes will be moved is not pristine and the land swap will give Washoe Meadows State Park a better piece of land along the Upper Truckee River
- The local golf course is critical to our local economy. It provides jobs, needed revenue for California State Parks and adds \$6 million dollars to our local economy each year
- Lake Tahoe Golf Course is used by many locals, including our high school golf teams, and by visitors to Lake Tahoe
- The wedding industry at the golf course also brings in revenue to the local economy

We need to vote for alternative 2 as it is the only alternative in which every side wins....the environment, the local economy, and outdoor recreation.

Thank you for your consideration,  
Amber

---

**Amber Wilson, M.S., R.D.**  
*Nutrition Counselor, Consultant, Writer and Speaker*

**NewLife Nutrition, LLC**  
*Encouraging healthful, tasty food one kitchen at a time*  
South Lake Tahoe, CA  
P: (530) 600-0657  
www.new-life-nutrition.com

1232-1

Letter  
I232  
Response

Amber Wilson, M.S., R.D.  
October 8, 2010

---

I232-1

The commenter's support for Alternative 2 and its economic, environmental, and recreation value is noted. This comment does not raise issues regarding the adequacy, accuracy, or completeness of the draft EIR/EIS/EIS.

## thoughts on the Upper Truckee River Restoration & Golf Course Recon project

Matthew Wilson [Matthew.Wilson@cision.com]

**Sent:** Thursday, October 07, 2010 4:52 PM

**To:** Project, Upper Truckee

I233

---

To Whom it May Concern:

I am a resident of South Lake Tahoe that is closely following the Upper Truckee River Restoration & Golf Course Reconfiguration project. I have taken great interest and concern in this situation as I am both an avid golfer and was married at the Lake Tahoe Golf Course. With this said, I have read through the five proposals with an open mind and want to comment on factors that I can intelligently speak to.

While I don't consider myself a hard-core environmentalist, I have great respect for the environment and admire people who are concerned about it. I hope that those weighing in on this matter from a passionate environmental angle can remain open-minded on other critical factors such as the local economy, just as I remain compassionate to the environmental element of this.

After reviewing the five proposed ideas, I believe options #2 or #4 are reasonable solution that provide the most benefits with the least amount of challenges. I believe doing nothing would not bode well for the long-term stability of the environment, and options #3 and #5 will either immediately or eventually result in the golf course closing.

As a golfer of twenty years, I can confidently tell you that a golf course of the quality of the LTGC would not last as a nine-hole course. A nine-hole course attracts a certain demographic- one that is typically less interested in golf and/or lower income. The significant majority of golfers seeking a golf course of moderate to high quality like the LTGC look to play 18 holes. Though I have no statistics to support this, I can tell you through twenty years of observation and contributions to the golf industry that this theory is nothing less than accurate.

Second, the LTGC brings in millions of dollars to the local and state economy. Given the severe economic conditions of California, removing a revenue generator at this time would be a horrible decision. Jobs and money would be lost. This is not a very popular notion right now, and though this story would never become national news I'd be embarrassed to tell people that a revenue-generating golf course was shut down due to environmental concerns that could have been fixed while maintaining the existence of the golf course.

To close, I wouldn't feel right not sharing the sadness my wife and I would personally feel with the closing of the LTGC. We were married on the 10<sup>th</sup> tee on August 29, 2009. Not only do I have the memory of marrying my beautiful wife that day, but I had the opportunity to play golf with my father, brother and best friends that morning. Though no one can take that day away from me, we'd certainly be heartbroken if the LTGC closed its doors for business.

Matt Wilson  
South Lake Tahoe

I233-1

Letter  
I233  
Response

Matt Wilson  
October 7, 2010

---

I233-1

The commenter's support for Alternatives 2 and 4 and their economic value is noted. This comment does not raise issues regarding the adequacy, accuracy, or completeness of the draft EIR/EIS/EIS.

I234

**Alternatives 2 & 4**

Judy [Judy@realtordeb.com]

**Sent:** Sunday, October 31, 2010 11:32 AM

**To:** Project, Upper Truckee



I feel that the best options for the South Shore community are within alternatives 2 & 4. Judy Witte

I234-1



(530) 542-2912 Office Direct  
(866) 542-2912 Toll Free  
(530) 542-8657 Fax  
Judy@realtordeb.com

3599 Lake Tahoe Blvd., Suite A, So. Lake Tahoe, Ca. 96150

Letter  
I234  
Response

Judy Witte  
October 31, 2010

---

I234-1

The commenter's support for Alternatives 2 and 4 is noted. This comment does not raise issues regarding the adequacy, accuracy, or completeness of the draft EIR/EIS/EIS.

I235

**From:** RHIGHEAGLE@aol.com [mailto:RHIGHEAGLE@aol.com]  
**Sent:** Thu 9/9/2010 9:06 AM  
**To:** Project, Upper Truckee  
**Subject:** Golf balls and river safety

I hope that someone can stop the golf balls from leaving the golf course.

The balls can be found all the way to the lake and are piling up at the end of the river. They shouldn't be anywhere but on the property. The beavers are gone, but the golf balls are O.K.?

I'm also a river paddler who's been down the upper part of the Truckee many times, and feel it's a hazard to paddlers, with all the downed trees, "habitat", etc. Can anything be done to make sure that there is a safe path, at all water levels, through the river areas involved?

Thanks. Russell Wright

South Lake Tahoe

I235-1



Letter  
I235  
Response

Russell Wright  
September 9, 2010

---

I235-1

The commenter also states that downed trees and habitat along the Upper Truckee River present a hazard to paddlers. See response to comment I226-3 for a discussion of boating safety issues.

## UPPER TRUCKEE RIVER RESTORATION PROJECT

Natalie [natalie@realtordeb.com]

**Sent:** Friday, October 29, 2010 1:21 PM

**To:** Project, Upper Truckee

I236



I am writing to support Alternative #2 for the Upper Truckee River Restoration Project. Do not get rid of the golf course! It generates revenue which is crucial for our town and the state. I am in support of restoration, but want a happy medium where we can help increase lake clarity and promote responsible recreation.

I236-1

Thanks,  
Natalie Yanish  
Buyer Specialist, TRC  
Deb Howard & Company  
(cell) 775.843.7142  
(fax) 530.542.8057  
natalie@realtor.com  
License #NV S.0169621  
License #CA 01886781

Letter  
I236  
Response

Natalie Yanish  
October 29, 2010

---

I236-1

The commenter's support for Alternative 2 and its economic value is noted. This comment does not raise issues regarding the adequacy, accuracy, or completeness of the draft EIR/EIS/EIS.

## Upper Truckee Restoration Project

Steve Yonker [steveyonker@gmail.com]

**Sent:** Saturday, October 02, 2010 12:06 PM

**To:** Project, Upper Truckee

I237

---

To:

Cyndie Walck  
California State Parks and Recreation  
Sierra District

From:

Steve Yonker  
Box 9149  
South Lake Tahoe, CA 96150

Dear Cyndie:

I have been a Lake Tahoe resident and active community participant for more than 40 years. I am currently chairman of the El Dorado County Recreation Commission representing the South Lake Tahoe area, having served on the commission for over 20 years. I have also served as chairman of the Tahoe Basin Firesafe Council and am currently a board member of the Alpine Firesafe Council. I am a member of the South Tahoe Optimist Club, life member of the Tallac Association and 2 time president of our local Chambers of Commerce.

I take advantage of the many recreational opportunities afforded by our beautiful area, hiking, bicycling, skiing, golfing and others.

I have followed the restoration proposals for some time and know the area in question quite well, having used the area and, for a period of time, lived on Mountain Meadow St. adjacent to the park area.

The river has been unnaturally constrained and some of the land has been used and abused making rehabilitation and restoration a worthy goal.

However, in my experience, wise stewardship of our natural resources and their recreational use need not be mutually exclusive and that, where appropriate, public lands should provide the greatest good for the widest range of users.

I believe that restoration of the river and meadow can be achieved hand-in-hand with a fully functioning golf course, providing improved streamside habitat, wildlife corridor, additional protection for Lake Tahoe as well as recreational opportunities.

We are fortunate in having extensive and open public lands in our beautiful area. In neighboring Alpine County, 96 percent of the land is in public ownership. But along with these wild and undeveloped areas, I believe that it is appropriate to use some portions of our public land for developed and organized recreation.

It seems to me that Alternative 2 best serves a balance of these uses. It makes little sense to me to remove a current developed recreational use that can co-exist with our environmental

I237-1

improvements. The golf course is well-used by locals and visitors alike, providing jobs and revenue for the local economy as well as much needed funds for California State Parks.

| 1237-1  
cont.

Thank you for your kind attention to my comments.

Steve Yonker  
530-318-4757

Letter  
I237  
Response

Steve Yonker  
October 2, 2010

---

I237-1

The commenter's support for Alternative 2 and its recreation, economic, and environmental value is noted. This comment does not raise issues regarding the adequacy, accuracy, or completeness of the draft EIR/EIS/EIS.

November 15, 2010

Cyndie Walck  
CA State Parks and Rec, Sierra District  
PO Box 16,  
Tahoe City, CA 96145

PUBLIC COMMENT: Upper Truckee River Restoration and Golf Course  
Reconfiguration Project

Dear Cyndie Walck:

I support Alternative 5.

1. I am appalled that the State of California would combine a river restoration and a golf course redevelopment project together in the name of Lake Tahoe water quality. These two projects shall be mutually exclusive of one another. I support river restoration and do not support golf course remodeling.

I238-1

2. The State of California's and federal monetary sources shall be made more apparent and transparent in the Restore Upper Truckee River project. The federal and state governments should not be using tax dollars to support a golf course improvement in the name of river restoration.

I238-2

3. Regarding Alternative 2, the information listed under impacts to the wildlife, cultural, recreation, etc. are really vague. There are comments such as, "observation is needed" and "mitigation is required". There should be more detailed information on what your "mitigation" is. I don't see how you'll mitigate cutting 43 acres of habitat, forcing wildlife to residential neighborhoods, bisecting habitat and potentially increasing vehicular traffic on Highway 89. How does one compensate for these outright losses and impacts?

I238-3

4. There is much emphasis put on the fact that "volunteer trails will be removed." There is no discussion as to what measures will be taken to ensure that social trails do not get reestablished, as is the case in most projects where no reasonable alternatives are given to the social trail elimination. The reason why social trails are created is that this is the route that people want to take because it gets them from Point A to Point B. What study has been undertaken to question trail users of their desired pedestrian paths? If these paths are removed, will users abandon the social trails or recreate them?

I238-4

5. I find it inexcusable to remove and fragment 43 acres of wildlife habitat in Lake Tahoe, as proposed in Alternative 2. The Lake Tahoe watershed has a road built all around the lake which prevents animals from safely navigating to an annual water source. The Upper Truckee River habitat has been compromised with many roads and development that have erased habitat and that prevents animals from safely navigating to an annual water source. The project area of the Upper Truckee River is a critical habitat

I238-5

- and further bisecting this habitat is not acceptable to the migratory birds, resident birds, bear, mule deer, marten, fox, raccoon, coyote, skunk, etc. | 1238-5 cont
6. Does California State Parks recognize hiking, mountain biking snowshoeing, and cross-country skiing as recreation activities within the park? If so, they are not discussed in 3.8-3. | 1238-6
7. In discussion of 3.16-23, if the State is proposing to attract more golfers as the premise of Alternative 2, then impacts to local and regional circulation systems need to be thoroughly evaluated. An evacuation plan shall address a situation on a busy holiday weekend where traffic on Highway 89 is at a standstill. | 1238-7
8. Public transportation to and from the golf course shall be discussed. | 1238-8
9. I do take issue with where some numbers are derived from. 3.10-1 cites that Alternative 2 will have 5,758 truck trips and Alternative 4 shall have 6,868 truck trips. How is this possible? Where did this number come from? Do these numbers include logging truck trips to log the 43 acres, truck trips involved in removing social trails, realigning the golf course, parking lot paving, adding bridges, etc. or just a portion of this work. Please make a more detailed comparison in the Construction Schedule. | 1238-9
10. If the true purpose of this project is to “improve geomorphic processes, ecological functions, and habitat values of the Upper Truckee River,” then Alternative 5 shall be the preferred alternative. Alternative 2 degrades ecological functions and habitat values by bisecting habitat with biocide ridden lawn, (lawn is not a native habitat to any animal on this planet) the obliteration of 43 acres of forest, pushing wildlife into the urban interface zone, and the disregard for hiking, mountain biking, cross-country skiing, and snowshoeing recreation opportunities. | 1238-10
11. I found Table 2-3 in Volume I unreadable since some columns had two answers, some columns were left blank, and some columns had numbers such as “6,382 8”. It would be nice to redo **Table 2-3: Upper Truckee River Restoration and Golf Course Relocation Alternatives Comparison Table** and redistribute to the public. | 1238-11

Sincerely,



Nicole Zaborsky  
Landscape Architect  
584 Kiowa Drive  
South Lake Tahoe, CA 96150



- I238-1 The commenter opposes combining golf course reconfiguration and river restoration as parts of the same project. This comment does not raise issues regarding the adequacy, accuracy, or completeness of the draft EIR/EIS/EIS.
- I238-2 The commenter questions funding under Alternative 2. See Master Response Section 3.7, “Economics,” for a discussion of funding.
- I238-3 The commenter believes that the impact discussions should be more detailed and questions mitigation for impacts on wildlife habitat, traffic, cultural resources, and recreation, but does not offer any specific facts related to inadequacies in the proposed mitigation measures. See the following master responses:
- ▶ Master Response Section 3.3, “Biological Resources,” for a discussion of wildlife impacts;
  - ▶ Master Response Section 3.5, “Recreation,” for a discussion of recreation impacts; and
  - ▶ Master Response Section 3.6, “Cultural Resources,” for a discussion of impacts on cultural resources.
- Section 3.5, “Biological Resources”; Section 3.8, “Recreation”; Section 3.9, “Cultural Resources”; and Section 3.10, “Transportation and Circulation,” of the draft EIR/EIS/EIS all include detailed mitigation measures describing how impacts on each respective resource area would be mitigated. For clarification, Alternative 2 would not increase traffic on U.S. 50, reconfiguring the golf course is not expected to increase course use, and only four additional staff members are expected to be required under Alternative 2.
- The State CEQA Guidelines require that an EIR describe any feasible measures that could minimize significant adverse impacts, and the measures are to be fully enforceable through permit conditions, agreements, or other legally binding instruments (State CEQA Guidelines, Section 15126.4[a]). Mitigation measures are not required for impacts that are found to be less than significant. NEPA requires that an EIS identify relevant, reasonable mitigation measures that are not already included in the project alternatives that could avoid, minimize, rectify, reduce, eliminate or compensate for the project’s adverse environmental effects (40 CFR 1502.14, 1502.16, 1508.8). Mitigation provided in the draft EIR/EIS/EIS is consistent with these requirements.
- I238-4 The commenter requests information about how volunteer trails will be managed. As described in Chapter 2, “Project Alternatives,” of the draft EIR/EIS/EIS, trail management that occurs under existing conditions would continue under all alternatives. Materials are available on-site to enable trail improvements as needed, and trails that cause water quality and/or vegetation impacts would be removed. As discussed in Section 3.8, “Recreation,” of the draft EIR/EIS/EIS, State Parks evaluated existing recreation use of the study area through recreation surveys. See Master Response Section 3.5, “Recreation,” for additional discussion of recreation access.

- I238-5 The commenter has concerns about wildlife habitat and movement corridors. See Master Response Section 3.3, “Biological Resources,” for a discussion of wildlife.
- I238-6 The commenter questions the recreation activities addressed in the draft EIR/EIS/EIS. As described in Section 3.8, “Recreation” (page 3.8-11), of the draft EIR/EIS/EIS, data collected from the observation-based surveys also indicate that primary recreation uses of the trails within Washoe Meadows SP are walking and hiking (39%), and bicycling (36%). Jogging and horseback riding are also common uses. No data were collected during periods of snow; however, cross-country ski and snowshoe tracks are also commonly visible in the study area, as is illegal snowmobile activity (i.e., outside of the concessionaire-operated track on the driving range).
- I238-7 The commuter states that impacts on the local and regional circulation systems need to be addressed if State Parks expects an increase in golf use. As discussed on page 3.10-16 of the draft EIR/EIS/EIS, the traffic generated by golf course facilities created or remaining under each alternative would be approximately the same as or less than current traffic. For alternatives that would continue operation of an 18-hole, regulation-length course, the number of golfers would also remain approximately the same as under existing conditions. This conclusion is confirmed by the economic study conducted for the EIR/EIS/EIS (Appendix E). Traffic from golf course employees would increase slightly under Alternatives 2 and 4 and decrease under Alternatives 3 and 5. However, the increase under Alternative 2 or Alternative 4 (i.e., up to four additional employees) would generate fewer trips (i.e., eight daily trip ends) than the 100-trip minimum threshold employed by TRPA. Based on the results of the economic study (Appendix E), regular site traffic would be less than existing traffic under the alternatives that would eliminate the golf course or provide a golf course with shorter or fewer holes. In each case, the net traffic increase under regular conditions would be well below the minimum level employed by TRPA to determine the need for a traffic impact analysis (i.e., less than 100 daily trips). Although a quantitative analysis of traffic related to golf course operations is not presented, a qualitative comparison is discussed.
- I238-8 The commenter states that public transportation needs to be addressed. As discussed in Section 3.10, “Transportation, Parking, and Circulation,” of the draft EIR/EIS/EIS (page 3.10-10), existing transit service in the Tahoe Basin is provided by four publicly operated transit systems, various tourist-oriented trolley services, and several privately operated shuttle systems and taxi services. On the South Shore, the South Tahoe Area Transit Authority operates the BlueGo Coordinated Transit System in portions of El Dorado County (Meyers and South Lake Tahoe) and in western Douglas County, Nevada. BlueGo Route 40 runs along U.S. 50, North Upper Truckee Road, and Lake Tahoe Boulevard from the transit center at the South Y (Emerald Bay Boulevard/Lake Tahoe Boulevard) and continues along Lake Tahoe Boulevard to Stateline, Nevada. In addition to this fixed-route service, the BlueGo system provides demand-responsive service within Meyers and South Lake Tahoe. Because the project would not increase land use and would have a very minor increase in employee trips (described in response to comment I238-7), public transportation would not be affected. Additional text has been inserted into Section 3.10, “Transportation, Parking, Circulation,” of the draft EIR/EIS/EIS and is presented in Chapter 5, “Corrections and Revisions to the Draft EIR/EIS/EIS.”
- I238-9 The commenter questions the truck numbers used in Section 3.10, “Transportation, Parking, and Circulation,” of the draft EIR/EIS/EIS. As discussed in the “Methods and Assumptions” section, trucks would travel to and from the study area throughout the construction phase. The amount of truck activity has been estimated based on a review of

preliminary construction quantities for each element of the project alternatives. The number of truckloads needed to accommodate identified quantities was estimated over the construction season and spread throughout the typical construction day to forecast hourly truck traffic.

From the standpoint of traffic impacts, large trucks have a disproportionate impact on operating LOS and on impacts on roadway structure. The length and acceleration/deceleration characteristics of large trucks exceed those of regular passenger vehicles. Standard engineering practice is to convert each truck to a number of passenger car equivalents (PCEs) and to use that adjusted volume in LOS calculations. PCE factors range from 2.0 to 4.0; for this analysis, a PCE of 4.0 was assumed for each truck.

Tables and text listed in the “Preliminary Quantities” section under each alternative of Chapter 2, “Project Alternatives,” of the draft EIR/EIS/EIS list the number of trucks estimated for each alternative. To ensure that the magnitude of traffic impacts was not underestimated, the analysis assumes the maximum probable concurrent employment on the site and maximum concurrent truck activity as the construction traffic level.

- I238-10            The commenter has concerns about impacts on recreation and habitat. See Master Response Section 3.5, “Recreation,” for a discussion of impacts on dispersed recreation; see Master Response Section 3.3, “Biological Resources,” for additional discussion of wildlife impacts.
- I238-11            The commenter requests an updated version of Table 2-3. This table was accurate, no columns were blank, and the number referred to by the commenter as being shown as “6,382 8” did not have an 8 and was shown correctly as 6,382.

I239

**Upper Truckee River restoration and golf course**

Liana Zambresky [lzambresky@att.net]

**Sent:** Monday, September 06, 2010 3:18 PM

**To:** Project, Upper Truckee

---

Dear Cynthia Walck

I have considered the 5 options regarding the Upper Truckee River Restoration and golf course.

I am very much opposed to Alternative 2. Restoration of a few acres along the river would be offset by a much greater impact of the golf course on the other side of the river in the environmentally sensitive land of the state park. It will destroy the current wildlife corridor on the north or west side of the river. The proximity of the new golf holes to what remains of the lovely, natural meadow of the former Amacker Ranch will have a negative impact on native animals and plant life by the nearness of people, golf carts and other machinery. This alternative greatly increases the areal influence of the golf course from what it is now.

I am most in favor of Alternative 4. People enjoy coming to Tahoe to play golf and it's a pleasant golf course the way it is. The banks of the Upper Truckee river could be easily stabilized in its present configuration.

I live on View Circle. My house borders on the meadow of the Angora Creek Restoration project. \$10 million dollars was spent to restore Angora Creek and the meadow to more natural states. Alternative 2 will destroy many acres of Washoe Meadows State Park for the sake of a golf course. The lack of consistency within the Tahoe Basin regarding meadow management is bewildering.

By the way, I am a golfer. I grew up playing golf courses at Pebble Beach. I played in 3 US Open golf tournaments. Until rather recently, I had a 0 handicap. Please note, I am a golfer who is opposed to Alternative 4!

Liana Zambresky  
1151 View Circle  
South Lake Tahoe  
(530) 577-4001

I239-1

Letter  
I239  
Response

Liana Zambresky  
September 6, 2010

---

I239-1

The commenter has concerns about impacts on wildlife under Alternative 2. See Master Response Section 3.3, “Biological Resources.”

## UT restoration project

Liana Zambresky [lzambresky@att.net]

**Sent:** Monday, October 04, 2010 9:07 AM

**To:** Project, Upper Truckee

I240

---

This is to let you know I am thoroughly opposed to alternative 2 of the Upper Truckee River restoration project. This alternative will benefit the river at a great loss of open space in Washoe Meadows. The benefit to the river is not as great as the loss of open space, which would allow a much larger footprint of the golf course and a greater impact of people and machines to the area. The wildlife corridor there would be entirely disturbed.

I am in favor of restoring Washoe Meadow which has been historically damaged for one reason or another. I am in favor of alternative 4 for the golf course.

I am a golfer. I grew up on the Monterey Peninsula, playing Pebble Beach golf courses. I played in 3 US Women's Open golf championships. I favor restoration of Washoe Meadows over the expansion and new development of the golf course.

Liana Zambresky  
1151 View Circle  
South Lake Tahoe

I240-1

Letter  
I240  
Response

Liana Zambresky  
October 4, 2010

---

I240-1

The commenter has concerns about impacts on wildlife under Alternative 2. See Master Response Section 3.3, “Biological Resources.”

This page intentionally left blank.



## **SECTION C**

---

### Form Letters

This page intentionally left blank.

## **I Support Alternative 2 for the Upper Truckee**

**To:** Project, Upper Truckee

---

I strongly urge that the Department of Parks and Recreation choose Alternative 2 for the Upper Truckee River Restoration & Golf Course Reconfiguration Project.

The continued deterioration of the Upper Truckee cannot continue. Its health is vital to habitat, fish and Lake Tahoe.

By moving part of the golf course away from the river, Alternative 2 will arrest this deterioration. Its a lasting solution that will benefit the river, its fish and fishing, while preserving the 18-hole golf course for all to enjoy.

F1-1

The commenter's support for Alternative 2 and its recreation, economic, and environmental value is noted. This comment does not raise issues regarding the adequacy, accuracy, or completeness of the draft EIR/EIS/EIS.

September 20, 2010

To: Cyndie Walck

Re: Upper Truckee River Restoration & Golf Course Reconfiguration Project

I would like to voice my support for Alternative 2 of this project. It is the ONLY alternative that actually meets the project's stated objectives of reducing erosion and maintaining recreational and Economic benefit.

While it is important to do what we can to reduce the flow of sediment into Lake Tahoe, it is equally important to do what's best for the residents of South Lake Tahoe and the State of California. The community can not afford to lose 168 jobs and the \$6 Million in revenue that the golf course generates annually; nor can the State of California afford to lose nearly \$900K in revenue used to support our state parks and recreation areas.

As a resident of South Lake Tahoe, and user of State Parks such as D.L.Bliss and Pope Beach, the revenue generated by the golf course is very important to me.

Lake Tahoe is a worldwide tourist destination based not only on its natural beauty, but also for its variety of activities, golf among them. Any reduction in choices available has a negative impact on our economy.

I would like to see Alternative 2 implemented for its positive impact on our environment as well as its economic benefit. With this in mind, I would also suggest that the new holes be built and ready for play, prior to restoration of the existing holes.

F2-1

The commenter's support for Alternative 2 and its recreation and environmental value is noted. This comment does not raise issues regarding the adequacy, accuracy, or completeness of the draft EIR/EIS/EIS.

September 22, 2010

To: Cyndie Walek

Re: Upper Truckee River Restoration & Golf Course Reconfiguration Project

As a resident of California, I would like to voice my support for Alternative 2 of this project. It is the ONLY alternative that actually meets the project's stated objectives of reducing erosion and maintaining recreational and economic benefit.

While it is important to do what we can to reduce the flow of sediment into Lake Tahoe, it is equally important to do what's best for the residents of California. The state can not afford to lose any more jobs nor can we afford to lose nearly \$900K in revenue used to support our state parks and recreation areas.

As a tax paying resident of California and user of State Parks, the revenue generated by the golf course is very important to me.

Lake Tahoe is a worldwide tourist destination based not only on its natural beauty, but also for its variety of activities, golf among them. Any reduction in choices available has a negative impact on our state economy.

I would like to see Alternative 2 implemented for its positive impact on our environment as well as its economic benefit. With this in mind, I would also suggest that the new holes be built and ready for play, prior to restoration of the existing holes.

F3-1

The commenter's support for Alternative 2 and its recreation, economic, and environmental value is noted. This comment does not raise issues regarding the adequacy, accuracy, or completeness of the draft EIR/EIS/EIS.



## **SECTION D**

---

### Public Meetings

This page intentionally left blank.



**Verbatim Transcript of**  
**Advisory Planning Commission (APC)**  
**October 13, 2010 Meeting**  
**Agenda Item V: Committee and Public Comments**

**Transcribed by**  
**Transcription by Trifox**  
**a department of Trifox**

**Advisory Planning Commission (APC)  
October 13, 2010 Meeting Transcript  
Agenda Item V: Committee and Public Comments**

*(Note: If a portion of the recording could not be transcribed due to the quality of the recording or if the words could not be distinguished, this has been indicated as follows: "(Incomprehensible)".)*

DONOHUE: What I'd like to do now is see if any APC members have any, say, clarifying questions, and then I'd like to open it up to public comment and then comment back from APC members. So are there any questions that you might have for State Parks or Danielle or TRPA on this presentation and the draft EIS? Yes, Mike.

GREENE: Where did you say the copies of the EIS are?

HUGHES: They're available on all these websites right here (Incomprehensible)...

GREENE: Oh, I didn't see that. Okay.

HUGHES: They're also available for you at the library...

GREENE: No, I just wanted the one for the TRPA. I didn't look at that slide, sorry.

DONOHUE: .... a CD.

GREENE: Yeah, I probably should.

DONOHUE: I think you have one already.

GREENE: Do I?

DONOHUE: It came in your APC packet, it should have. Okay, yes.

GARCIA: Yeah, it's my, I thought I heard somewhere that at one point Alternative Two was the preferred alternative, and at some point that has changed and I was just wondering the thought process that went into that.

PM1-1

WALCK: I can try to address that. It might be a better EDAW question. During the NOP/NOI process, we were asked by the public to not have a preferred alternative as well as to add Alternative Five, and so that was during that process.

GREENE: So, what are the recreational and economic differences between 2 and 3 'cause I gather in, in Alternative 2 you've got, you're, you're kind of rebuilding the golf course and you're going to have a full 18 hole golf course. In three, you kind of intimated that there might be an 18 hole, but sounded

PM1-2

like you only had room for a 9 hole. Um, and so there, there's some, so there's some obvious recreational differences between these two alternatives and there's some economic differences for the state parks obviously. So, what's the basic difference there because it looks like Alternative 3 environmentally does a lot more for what you want to accomplish environmentally?

PM1-2  
cont.

WALCK: I'll take that one too. So, Alternative 3 removes the, when we looked, when you think back to that 1940's photo I showed and we tried to point out the meander belt, Alternative 3 identified the portion, um, that's outside the meander belt. So that part of the golf course was identified as a portion that could stay there. Um, but, it only leaves about fifty acres which leaves room for either a 9 hole regulation course or a Par 3, very compact 18 hole course, which is basically what we have across the street at Tahoe Paradise. So you wouldn't be able to actually have an 18 hole regulation, regulation course. Um, also, during the, the EIR process, um, based on public comments and requests to know what, what is the difference between these alternatives economically, we went back to EDAW, amended their contract, and asked them to hire an economist to look at these various alternatives and give us an idea of what the difference would be. Um, during that process, and that, um, is on your CD in one of the appendices, during that process, Alternative 3 came out to be virtually non-viable. Is that a fair way to state it? Basically, um, to pay for the taxes, to pay for running the property, it would operate at, either at a loss, unless you assumed the best possible conditions. So when they came back with the draft, they said 9 holes is completely unviable, and I said, "Well wait, is it really?". And so I said, "What if you assumed that you have a person starting every five minutes, or however often you can get a person on the golf course and you charge more than anything else in the region, can you combine that with, can you give me a high/high, medium/medium?". So medium/medium was like right now they're assuming, you know, this is the average number of golfers that play at a 9 hole golf course in a day and this is the average amount they charge in the region. And that came out non-viable. So I said, "Can you give me medium with the most amount of players you could have, can you give me medium with most amount you could possibly charge and can you give me high/high?". And the only one of those that came out is, as potentially viable, was the high/high. So, unless, which is not really a realistic assumption, so Alternative 3 we really wouldn't be able to get someone to run that as a concession.

GREENE: So, Alternative 3 will only work if it's Alternative 5?

PM1-3

WALCK: Yes. Alternative 3 really, and we didn't know this going into it, it was a full, fully viable alternative, but during the IR process, as requested to do the economic study, it really came out to be non-viable. So if you go to Alternative 3, you may be going to Alternative 5, or you may be going to, we're just not going to do anything.

GREENE:	And, so where does California State Parks sit in this? I mean they've got an economic, um, interest in this obviously, because they make money on this, right?	PM1-4
WALCK:	Well, it's, it's only one of a number of our concerns. So it, I mean I...	
GREENE:	Well, no, no, I'm just, I'm only talking about that particular part of the... I mean there's a, there are a variety of concerns here obviously. There's recreational concerns, there's environmental concerns, there's community concerns. So I'm just talking about this, you know, is California State Parks prepared to lose this? Is that what I'm, I guess, is maybe is what I'm asking.	PM1-5
WALCK:	That won't be my decision, so I'll have to start there, but it, it does average \$800,000 to \$900,000 annually in income to state parks. Um, it does offset our expensive running the D. L. Bliss and Emerald Bay at a loss. Um, but, it's really, it's, it's part of our mission, but it's also, what, what was interesting to me coming out of the economic study, because I know that from Parks' point of view, but also I hadn't really realized what it meant to the local economy. So, that's also a part of the picture.	
GREENE:	Yeah, and that's the, and then the next question I have is, you've got 33,000 rounds of golf there, where are those 33,000 rounds going to go if, if that pa, that's closed?	PM1-6
WALCK:	Don't know that either, but I will say one thing, in our contract, our concession contract, we specify, I used to be a geomorphologist, I just want you guys all to know that. We specify the maximum amount they can charge. Um, so it's part of our mission to keep that golf course affordable. We don't want it to be Edgewood, that a local person or, you know, a normal person coming up can, can't go and so I don't know where they'll go. They'll probably go to North Tahoe. They'll go to Gardnerville because we don't have something comparable to that in this region.	
HUGHES:	Yeah, that's what, that's what we came with, up with is that they'd just disperse the route and probably more down, down the hill because of the costs for Edgewood.	
DONOHUE:	Yes, Bob.	
JEPSEN:	Question on the upland vegetation. Why is Alternative 2's so bad compared to the others?	PM1-7
HUGHES:	Well, I, I'd ...Alternative 2 actually, um, there is extensive tree removal with that alternative. So, um, you know, we are limiting the, the larger trees that we'll be removing, but there, there is some extensive tree removal with that.	

There will be, um, trees planted around the buffer area to protect from the, for scenic impacts, um, to the surrounding neighborhood, but there are, there is some tree removal with that.

DONOHUE: Mary.

HUGGINS: Real ques, quick question. The revenue from the golf course, does that come back to the Sierra District in its entirety or does that go to other areas of the state park system?

PM1-8

WALCK: It's a complicated process, but basically, and again I'm not a manager, but, um, I know they, that Sacramento sets a revenue goal and our, our budget is based on, on that revenue and that, so yes, basically, it directly impacts how much we have as a budget in this district. But, it does, it goes, goes there and then comes back, so it doesn't just stay.

DONOHUE: Yes, okay.

GARCIA: Have any other business plans been looked at for this, for the state parks, I mean, mountain biking or something like that to bring in other forms of revenue as opposed to moving the golf course?

PM1-9

HUGHES: So that would be, kind of, under Alternative 5, and that's where we, they would actually go through a separate planning process. So, at this point, no, it would, you know, there's so many options. We've had the recreation planning workshops in the past and, you know, other, people have went from, you know, campgrounds to cabins to, you know, motor-cross, you know, all over the place. So, you know, it really, it would be a, a separate study.

WALCK: However, talking to our concessions people, there is nothing that would generate this level of revenue. I mean, our campgrounds all operate at a loss. Um, so, they, they, they, really, the biggest money makers in the state parks system are this, this unit, Moro Bay with the golf course, Asilomar with the conference center and Hearst Castle.

DONOHUE: Other comments or questions from APC members? I have, I have a question, um, glad you're on this slide still. Short term water quality in, um, almost all the alternatives, it has a significant adverse affect. I'm assuming, is that prior to mitigation?

PM1-10

HUGHES: You know, we actually have a significant unavoidable with those, and there will, there will be mitigation put in place to limit those. But, they're really based on the turbidity standard in the basin which is a, a difficult standard to meet during construction. So, um, we wanted to just acknowledge that there, there is, it's going to exceed that standard. Um, however, you know, it, there will be mitigation put in place.

WALCK: And you have to keep in mind that, that we're trying to be honest here because this turbidity standard being at 10 to 20 times background level, which is like a quarter of an NTU, you can put your finger in the water and make that much turbidity, and so we will mitigate, we'll get it down to, you know, 10 or 20 NTU, but most projects are going to violate that. Um, we use this as our evaluation criteria, which is not normally used, but to use it in the strictest sense. So we tried to actually interpret, interperatate, interpret, yeah.

HUGHES: I'll add to that too. So, you know, what we do plan to do is not affect the beneficial uses of the river, so we will mitigate that level, so.

DONOHUE: Your honesty is refreshing. Rick.

ANGELOCCI: To address some of the things Chuck was bringing up, um, the loss of the golf course would not only impact revenue to the state, but the local economy in terms of about \$6 million per year, is that correct?

PM1-11

HUGHES: Yes, that's correct.

ANGELOCCI: Um, I'm wondering if, you know, with 33,000 rounds of golf, which would be disbursed without the golf course, is there any evaluation or thought about VMT impacts? You know, it's a 45 minute drive to Genoa, for example, from the South Shore, and those rounds would be, have to go somewhere.

PM1-12

HUGHES: Um, I have to look into that again to see if there's really that much detail on the, in the traffic analysis, but you know, I would say the, the one thing with those being disbursed is that in general, golf, um, golf course recreation has, is on a, a decreasing trend, so that's one component of it. A lot of those people do come from outside of the area as well, so it's not necessarily that those people are going to be disbursed from this location to those places.

WALCK: I believe 60% of, um, the, we, we surveyed for a couple of years just looking at the zip codes of everybody that came, came to play golf, and 60 to 68 percent, something like that, were out-of- town users.

ANGELOCCI: I would agree with that, but the way you characterize it is they drove from outside the area to play golf at the country club. I think it's more, they were in Tahoe, and they went to the golf course to play golf. Their primary destination was not the golf course.

PM1-13

WALCK: I believe, and I'd have to look back at the economic study, she looked at the, that 60% and then took a percentage of those being, so not saying that entire 60% is coming here, a certain percentage of those, and we have talked to people at the golf course who say I come here because there's an affordable golf course, it's part of my vacation. That is obviously not the entire 60%, and



the analysis was not based in it being the entire 60%, but I can't tell you what percentage it was.

DONOHUE: Okay, if there are no other questions or comments right now from APC members, I'd like to open this up to the public for comment. What I'd like to do is provide you with three minutes unless you represent an organization. So, if you represent an organization, please state the name of the organization and I will adjust the timer from 3 to 5 minutes. And, so if there are any members of the public, and I would encourage you, I was at a meeting yesterday. This is, this is your opportunity to make comments in the draft EIS so that they can be responsive prior to the final EIS. The, the commission isn't making, taking any action on this item today. We're just here to have comment on this document. So are there members of the public wishing to speak? Please step forward. State your name.

PAULSON: My name is Lynne Paulson from the Washoe Meadows Community. We're an organization of people from throughout the state that want to preserve the integrity of Washoe Meadows State Park which faces devastation if the parks department moves a golf course into the park. The proposal to move the golf course is in conflict with California's legislative statute and legal settlement agreement of 1984 under which Washoe Meadows State Park was formed in order to preserve the land and protect it from development. The land was acquired by the state for the purpose of protecting an irreplaceable watershed as well as wetlands, meadows, and wildlife habitat. A reading of these entire documents clearly expresses the significance of the park's valuable natural resources and sensitive ecology. When the state first acquired the land, the records show that there was a debate about whether to retain the golf course. It was finally decided to allow to, it to continue on land that was classified as state recreation area, which is an important distinction from the classification from the park. However, now the golf course interests are being maximized at the expense of Washoe Meadows in open defiance of legislative protections afforded to the park. It is our contention that Alternative 2 will result in significant, unavoidable impacts to wildlife species and sensitive biotic habitats, thins in spring complexes. To aesthetics, users of the park will now be confronted with the golf course, and to continued non-consumptive recreational activity in the park such as hiking, bird-watching, botanizing, snowshoeing, horseback riding and cross-country skiing. Some areas of deficiency in the draft DIR/EIS include failure to address significant impacts in proposed Alternative 2 such as the severe impact on recreational park users when the park is fragmented and so many acres of the park will be within close distance of the golf course. Also, the impact on wildlife habitat from replacement of many acres of forest, meadow and wetlands with golf course, the unequal quality of the land that is proposed for exchange as confirmed in the Parks Department's own general plan for Lake Valley Recreation Area and consequences of allowing the complicated turf management practices of a golf course with all their herbicides, pesticides, fungicides, and fertilizers to

PM1-14

be applied on sensitive land. It is, um, many of our members are golfers, and we do not object to continuing with golf on the east side of the river. We do support river restoration, but we don't think it should be combined with moving the golf course into the park and onto an additional stretch along the river as outlined in Alternative 2. The golf course should remain in, within the boundaries of the State Recreation Area with a reconfigured 9 or 18 hole golf course as mentioned in the description of Alternative 3. The economic analysis has many unsubstantiated assumptions that will be pointed out in our written comments. Significantly, it doesn't address the reality of the current and predicted continuing decline of golf as a recreational activity and it's replacement with lower impact and family friendly sports such as hiking, river-rafting, bird-watching, and enjoyment of nature. We ask that you continue to review information related to the draft DIR/EIS because we will have more detailed comments by the end of the comment period. The document is very lengthy, and it takes us a while to document all of our comments. And we've also been, our review of Alternative 2 has also been impacted by a lengthy delay in the receipt of the detailed information on the proposed golf course layout. Are you sure you set that right, because I, I'm speaking for an organization and I've timed myself? As commissioners, the people of California and Nevada rely on your wisdom and judgment and guidance to fulfill TRPA's mission to protect Lake Tahoe environment in a way that benefits not just our current population, but also future generations. You will, you will expect to receive most of our members' comments in, in writing because they have work and other responsibilities that do not allow them to come to a meeting such as this. And I have a copy of my statement and some pictures of the park and a letter written by one of our members that I would like the commission to have. Am I supposed to give it to a secretary? Okay. Thank you.

PM1-14  
cont.

DONOHUE: Thank you for your comments. Are there other members of the public who would like to speak on this item? Alright, seeing none, I'd like to bring it back to the commission. Are there other members of the commission have any other comments related to this item? Yes, Bob.

JEPSEN: Yeah, just a question. Are you talking about the golf course, you interviewed the people playing, did you ask them how many would come in if they went to the short course or the nine hole course?

PM1-15

WALCK: That was part of the questionnaire, and again this is a small sampling, I'm not going to say it's a (Incomprehensible)... thank you. Basically, we were out there for about 10 days per season over a couple of seasons, and basically, all of them said that they would not play a shortened or a reduced area course. I won't say all. I would say probably 3% responded that they would play a reduced area course.

DONOHUE: Yes, Chuck.

GREENE: I'm having a problem seeing how this is going to work. Um, I mean, you've got an Alternative 3, which you've said the golf course won't work. You've got an Alternative 2, which is where you keep the golf course, um, but it has a lot of concerns as just demonstrated. And, I don't see an alternative that's going to solve that. I guess that's my only comment.

PM1-16

DONOHUE: Comment or a question?

ANGELOCCI: Just comment.

DONOHUE: Yes, Rick.

ANGELOCCI: You say that with, anyway, ah, reservation, um, I know that all of us received, um, a letter from the League, Nicole Gurins, and I had a question for these folks based on what I read in the letter. Um, it appears at least in 3 or 4 places, the letter claims that Alternative 2 would be turning raw, undeveloped, forested, you know, they, they characterize it almost as pristine land, and it's my understanding that the Alternative 2 relocation of the 9 holes is going into an area which was formally logged, was a quarry, ah, and is a disturbed area. I happen to know the area and be out there, and I'm just, I'm just, am I correct in that?

PM1-17

WALCK: Um, so, you can see, two deeper quarry pits here. There's a third down in here. There's an asphalt brick dump down in here. Um, so pristine would not be the word I would describe. I can say that to people that live there, it's probably a very attractive backyard. It's a good place to live and recreate, um, but it is a highly formerly disturbed. Amacker Ranch sits here. Um, I've seen pictures of the drag races in the meadow. We've done some restoration of this meadow. Um, this was a large haul road coming in and out. There's a sewer line that was put in actually anticipating the development of this property, and, um, several generations of logging have occurred. And, we've been working also, through the years, on removing a lot of the old rog, logging roads, um, and recovering from second and third growth thickets of trees. We've been doing a lot of thinning, but, um, it is a disturbed landscape. And one other thing I would point out is, talking with wildlife biologists, if you look at the greater Angora watershed, what really fragments that watershed is the presence of the neighborhood much more so than the golf course. And, one of the things we've really tried to do, looking at the relocation area, you can kind of see the darker signature of this horseshoe in the bottom and that is upland area. So that's kind of this area here coming up along this side. So you're going uphill as you go away from the river. Um, you're leaving (Incomprehensible). You're going onto forested land, and so we've really taken care with consideration and what the study area is to avoid sensitive wildlife areas, sensitive cultural areas, and stay out of the zone of the river and use to the maximum extent some of those disturbed lands.

ANGELOCCHI: Thank you.

DONOHUE: Cindy, one of the things, um, we talked about a little bit yesterday when I was out on the site is in reference to the League's letter and I think it references close to 2,000 trees will be removed. Would be, if Parks were to go in there and actually do forest restoration activities, what would be, you know, kind of the offset in terms of how many trees might be removed in that activity versus the relocation activity and also really, what, I mean there are a lot of dog hair thickets out there, um, they're not saying that, the stands aren't in the best shape, I'm just wondering if, I didn't really see that thoroughly addressed in the EIS. So, I'd, I'd like to see some comment back, um, regarding that.

PM1-18

WALCK: Um, I know that a certain percentage of those would be removed for our forestry practices anyway, but I, I can't answer you, the percentage at this time. But, we, we do recognize that the forest is, has a lot of thickets and that includes, um, I think that number includes six inch DBH trees. And also, we tried to estimate, um, what I will call conservatively, meaning that we tried to over-estimate to make sure that, yeah.

HUGHES: There, in the Bio section, I think it is Section 3.5, the biological resources, there's a tree removal impact discussion for each alternative.

DONOHUE: Alright, yes.

SPEAKER: (Incomprehensible) Yes, I am.

GARCIA: Well this is an important issue to the Washoe Tribe, because, you know, we haven't, it, it's not something we talk about publicly because they're sensitive sites, but there are cultural sites located on the property. And, Alternative 2 would result in impacts that can't be mitigated, you know. I understand that with archaeology, the common way to do is to encapsulate the sites so that they aren't destroyed, but what you're destroying is the Washoe Tribes ability to access those sites when you do that. And, um, you're taking away their ability to take their children and their nieces and their nephews up there and tell them, "Look around. This is where your grandmothers came". You know, that's something that just can't be mitigated. And, so, um, we dispute the finding that, you know, that with the encapsulation, those effects can be reduced to a less than substantial, or less than significant, and, um, you know, I just encourage a lot of dialog with the tribe. I haven't had a chance to talk the res, Cultural Resources Committee about what would happen should Alternative 2 be chosen. Obviously we're not in favor of that at this point. So, ah, I just had to put that on the record.

PM1-19

DONOHUE: Thanks for those comments, Mr. Kuchnicki.

KUCHNICKI: Thank you Mr. Chair. Um, I take it that you've consulted your state legal Attorney General's office that this is actually legally feasible to transfer the land from the state park.

PM1-20

WALCK: Yes, we've had extensive meetings with our legal staff and our Parks Planning and Policy Commission that this can be done as this transfer of land. Um, one of the things that comes up is that we have a general plan for Lake Valley State Recreation area. We do not have one for Washoe Meadows State Park. When we built the clubhouse facility, um, we had to adopt that because that's a large permanent structure. When we build trails, do vegetation changes, those are not considered a permanent impact, or, or, you know, something that cannot be reversed. Um, if under any of the alternatives we actually have to do a general plan amendment, um, the general plan calls for having an 18 hole gol, regulation golf course. The general plan calls for restoring the river. Kind of the same boat we're in with all of this. Um, and so, how do we resolve that? If we do Alternative 1 and do nothing, we don't restore the river, we need to amend the plan and say that we're going to let it go. If we do Alternative 2, we would redefine the boundaries between the two units. The area that's restored along the river, the 40 some odd acres of riparian habitat that's restored along the 6000 feet of river would become, um, state park. That area would get a trail through it, would be open to public fishing and boating which it is not now. And the area that is transferred into golf course would become part of the SRA, the State Recreation Area. So, basically, those boundaries for us recre, represent the management policies for those units, um, but they're a continuous set of units that are both in our ownership.

KUCHNICKI: Okay, thanks, yeah, I just, you know, obviously that's an important thing to resolve so that you don't end up with a lawsuit right after you move forward with the preferred alternative. Another, I had two more comments. The other comment I had was related to the climate change impacts. And, I saw in there that you guys addressed the emissions, um, which relates to climate change. However, I would encourage looking at perhaps some more comprehensive analysis of the climate change because you know, in the future, predictions are that there's going to be less water. So it seems like, you know, the different alternatives relate to that when you're talking about irrigating the golf course. So, um, definitely those, the options or Alternatives 3 and 5 would have, ah, you know, benefits in the future by drawing less water. Um, and then, the other comment that I have relates to, ah, we discussed the deep water, ah, water quality problem for (Incomprehensible) particles, but I would encourage also a discussion of near shore water quality and, which, for which nutrients are more critical. Um, and, you know, it seems like the management practices that are involved on the golf course would have a big affect on that and, as well, the geomorphology 'cause when you restore the function to the river, you're raising the ground water, there might, you might actually increase nutrient load into the stream and to the lake. So I would encourage the analysis to take a look at that as well.

PM1-21

DONOHUE: Thank you Jason. Okay, seeing no other comments from APC members, I'd like to close this item and, ah, let's pleasure the commission. Do you want to take a 5 minute break or move on to...? Okay, I'd like to take a 5 minute break. Let's keep it to five minutes and then move into the Plaster County item. Put the timer on.

**END OF AGENDA ITEM V**

- PM1-1 The commenter requests a discussion of the process for determining the preferred alternative. See response to comment AOB8-1 for discussions of the selection of a proposed Preferred Alternative and of the public participation process.
- PM1-2 The commenter asks about the recreational and economic differences between Alternative 2 and Alternative 3. Recreation facilities under Alternative 2 would include an 18-hole regulation golf course, a new public bridge across the golf course, 1.4 miles of new designated trails, a new trail on the southeast side of the river, and dispersed recreation within 527 acres of Washoe Meadows SP. Total annual revenue under Alternative 2 is expected to be \$2,809,000. Recreation facilities under Alternative 3 would include either a 9-hole regulation or an 18-hole executive golf course, no public bridges across the golf course, no new trails, and dispersed recreation within the entire 620 acres of Washoe Meadows SP. Total annual revenue under Alternative 3 is expected to be between \$1,027,000 (low number of assumed rounds and low fees) and \$1,698,000 (high number of assumed rounds and high fees) (HEC 2008:4 [Appendix E]).
- PM1-3 The commenter asks whether Alternative 3 is feasible. See response to comment AOB8-1.
- PM1-4 The commenter asks about State Parks' economic interest in implementing Alternative 5. As described in Section 3.15, "Population and Housing, Socioeconomics, and Environmental Justice," in the draft EIR/EIS/EIS, decommissioning and removing the Lake Tahoe Golf Course under Alternative 5 could result in an annual loss of income to State Parks of \$881,000 (HEC 2008:3 [Appendix E]). Fiscal impacts on State Parks under Alternative 5 would be adverse. Therefore, Alternative 5 is not State Parks' proposed Preferred Alternative.
- PM1-5 The commenter asks about the feasibility of implementing Alternative 5. See responses to comments PM1-4 and AOB8-1.
- PM1-6 The commenter asks where golfers are expected to golf under Alternative 5. Although the exact change in distribution of golfing under Alternative 5 is not known, it is expected that the displaced golfers would visit various other golf courses in the area, and others may choose to golf outside of the Lake Tahoe area. As described in Section 3.8, "Recreation," of the draft EIR/EIS/EIS, approximately two-thirds of the golfers at the Lake Tahoe Golf Course are visitors from outside the area, so it is expected that many of these golfers would use other golf courses closer to home. Local golfers would likely use multiple other golf courses in the South Lake Tahoe area. Therefore, the increased use of any one golf course would be dispersed among other available golf courses.
- PM1-7 The commenter asks about upland impacts of Alternative 2. As described in Section 3.5, "Biological Resources," of the draft EIR/EIS/EIS, impacts on upland vegetation would be greater under Alternative 2 than under Alternative 1 or Alternatives 3–5. Impacts on upland vegetation under Alternative 2 are associated primarily with tree removal. See Master Response Section 3.3, "Biological Resources," for a discussion of upland impacts.

- PM1-8 The commenter asks whether revenue from the golf course is distributed to the Sierra District. See Master Response Section 3.7, “Economics.”
- PM1-9 The commenter asks whether other plans for revenue have been considered by State Parks. Other potential sources of revenue were not analyzed as part of the project. As described in Chapter 2, “Project Alternatives,” of the draft EIR/EIS/EIS, State Parks would be able to embark on a new planning effort for the entire area at any time in the future when it wishes to consider developing permanent facilities. This effort could involve planning for the Washoe Meadows SP and Lake Valley SRA together or separately. It could involve reclassifying land and considering a variety of actions related to outdoor recreation and resource management (e.g., day use, picnicking, development of multiuse trails, overnight tent and RV camping, group camping, cabins).
- PM1-10 The commenter requests clarification of whether the potential short-term adverse effects on water quality would be significant for all alternatives before mitigation. As described in Section 3.4, “Geomorphology and Water Quality,” of the draft EIR/EIS/EIS, only Alternative 1 has a less-than-significant short-term risk of water quality degradation. All of the action alternatives (Alternatives 2, 3, 4, and 5) have potentially significant adverse water quality impacts (Impacts 3.4-6 and 3.4-7). Mitigation measures are identified for both impacts under all action alternatives, but the impacts would be significant and unavoidable after mitigation because of the strict water quality standard used in the analysis.
- PM1-11 The commenter correctly states that loss of the golf course would reduce revenue to the State by \$6 million per year. This comment does not raise issues regarding the adequacy, accuracy, or completeness of the draft EIR/EIS/EIS.
- PM1-12 The commenter asks whether impacts related to vehicle miles traveled by golfers driving farther to other golf courses were analyzed for Alternative 3 or Alternative 5. As described in Section 3.8, “Recreation,” of the draft EIR/EIS/EIS, approximately two-thirds of the golfers at the Lake Tahoe Golf Course are visitors from outside the area, so it is expected that many of these golfers would use other golf courses closer to home. Local golfers would likely use multiple other golf courses in the Lake Tahoe and Carson City/Reno area. Therefore, the increased use of any one golf course would be dispersed among other available golf courses. A specific analysis of changes to vehicle miles traveled under Alternative 5 was not completed because the changes would be dispersed and the specific destinations would be speculative.
- PM1-13 The commenter’s characterization of golfers who choose Lake Tahoe Golf Course is noted. This comment does not raise issues regarding the adequacy, accuracy, or completeness of the draft EIR/EIS/EIS.
- PM1-14 The commenter states that Alternative 2 would be legally infeasible because it would be in conflict with State Parks’ plans, policies, and regulations. The commenter is concerned about impacts on biological resources, water quality, aesthetics, recreation access, and the scope of the economic analysis. The commenter’s opposition for Alternative 2 is noted. See the following master responses:
- ▶ Master Response Section 3.2, “Land Use,” for a discussion of applicable plans, policies, and regulations;
  - ▶ Master Response Section 3.3, “Biological Resources,” for a discussion of impacts on biological resources; and



- ▶ Master Response Section 3.4, “Hydrology, Flooding, Geomorphology, and Water Quality,” for a discussion of water quality impacts.

Section 3.7, “Scenic Resources,” of the draft EIR/EIS/EIS and response to comment I6-3 discuss potential impacts on aesthetics in the study area. See also Master Response Section 3.5, “Recreation,” for a discussion of recreation access; and Master Response Section 3.7, “Economics,” for a discussion of the economic analysis. Appendix E, “Lake Tahoe Golf Course Economic Feasibility Analysis,” of the draft EIR/EIS/EIS acknowledges that the Lake Tahoe Golf Course has experienced declining gross revenues since 1997.

- PM1-15 The commenter asks whether the golfers interviewed were asked about playing at a 9-hole golf course. As part of the golf course surveys conducted by State Parks in 2007 and 2008, golfers were asked about playing on a 9-hole golf course. Eighty percent of the respondents said that they would not play a 9-hole course.
- PM1-16 The commenter’s opinions about Alternatives 2 and 3 are noted. This comment does not raise issues regarding the adequacy, accuracy, or completeness of the draft EIR/EIS/EIS.
- PM1-17 The commenter asks about the condition of the land where golf course holes would be relocated under Alternative 2. The commenter correctly states that the portion of the golf course would be relocated in an area that has been previously logged and disturbed. This comment does not raise issues regarding the adequacy, accuracy, or completeness of the draft EIR/EIS/EIS.
- PM1-18 The commenter asks for clarification on the condition and number of trees that would be removed under Alternative 2. The draft EIR/EIS/EIS addresses tree removal impacts as they are defined by TRPA regulations. Mitigation measures for the respective alternatives would reduce these impacts to a less-than-significant level under TRPA regulations, and were developed in accordance with Chapter 71, Section 71.3.B and Chapters 30 and 77 of the TRPA Code of Ordinances. The mitigation measures require preparation of a tree removal and management plan and tree replacement plan by a qualified environmental professional. The significance of this potential impact with and without mitigation proposed was determined based on regulatory significance criteria described in the draft EIR/EIS/EIS. See Master Response Section 3.3, “Biological Resources,” for additional information.
- PM1-19 The commenter expresses concern about potential impacts on cultural resources sites under Alternative 2. See Master Response Section 3.6, “Cultural Resources.”
- PM1-20 The commenter asks whether the Attorney General’s office has been consulted about the legality of a land trade. State Parks’ legal counsel has been involved throughout the planning process. See Master Response Section 3.2, “Land Use,” for a discussion of consistency with plan and policies.
- PM1-21 The commenter is concerned that climate change was addressed only in terms of emissions and not in relation to water demand. The commenter is also concerned about water quality impacts on the lake, particularly nutrients from the golf course and raised groundwater (because of stream restoration under Alternatives 2 and 3) that would increase nutrient loads to the stream. See response to comment AOB20-2. See Master Response Section 3.4, “Hydrology, Flooding, Geomorphology, and Water Quality,” for a discussion of water quality impacts.

surfers. They're protecting the coastline so that people can come and enjoy that environment, and clearly, I believe that's what we're trying to do here in the Tahoe Basin. Um, I don't think that there's a member represented by our Chamber or a business in this Basin who's not a member of our Chamber who would advocate that we don't want to protect our environment. We all want to protect this lake, that's just a given, and I think we have to accept that and honor that. But we also all understand as business people, that in order to have a sustainable environment, we have to have a sustainable economy. The two are linked and we can't do one without the other. We've tried. We've seen where it's gotten us to. So towards that end, we are urging both California State Parks and the Governing Board to support Alternative 2. We believe this is the best Alternative because first and foremost it achieves the environmental improvements identified as a high priority in the EIP adopted by this Board. Um, we've already seen and heard the reasons from many this morning why this is a great Alternative. And secondly, and more logically, what you would have expected me to put as first would be that this is a win/win for the economy as well. I think each and every one of us knows we have about 40% of our population living at or below poverty level. If you take under-employed and unemployed, together, we're not at 17%, we're probably closer to 30%. We cannot afford to lose 168 jobs out of this community. Nor can we afford to lose \$6 million dollars of income. If we want the jurisdictions to implement TMDL practices, they have to have a tax base to do that from and this would further erode that tax base. It's a cost we can't afford, and I would say I don't believe the TRPA Governing Board can afford, if we're serious about getting the threshold attainment that we want. I also would be remiss if I didn't mention the \$880,000 revenue to CalState Parks. For those of us who live on the California side, we're all too familiar with what almost happened last year to our state parks. Many of us fought very, very hard to protect those state parks and keep them open. Clearly \$880,000 is an important revenue stream to the institution. We heard that from Dan Ray this morning, we've heard it over here. Um, we need to preserve that funding, but I also want to mention that Washoe Meadows was one of the parks that was on the list slated to be closed. I don't think we want to risk that, and I know we don't want to risk the closure of other state parks that are important to our tourism economy here. Not only do we lose the tourists, but we also risk the, um, protection of those assets and perhaps further environmental degradation of parks if they have to pull back their funding. So, I think there's a ripple effect here that we haven't necessarily talked about this morning. So, with that, I will, um, thank you for your time this morning and we look forward to hearing positive decision on Alternative 2.

PM2-33  
cont.

BIAGGI: Thank you B. Scott Valentine and then Bob Anderson.

VALENTINE: Hello, my name is Scott Valentine, I'm the head of the Earth Science Department at the Lake Tahoe Community College, and I like to start out by saying that I'm not here to complain. I've been to enough public meetings to

PM2-34