

Appendix O

Socioeconomics

Draft

Program Environmental Impact Statement/Report

SAN JOAQUIN RIVER
RESTORATION PROGRAM



Table of Contents

1.0 Introduction..... 1-1

Attachments

Central Valley Project – Friant Water District Exhibits

Socioeconomic Tables for the Restoration Area

Table of Values for Main Crop Types in Fresno, Kern, Kings, Madera,
Merced, and Tulare Counties

This page left blank intentionally.

1 **1.0 Introduction**

2 The Socioeconomics Appendix contains additional information to supplement the
3 Socioeconomics chapter of the Program Environmental Impact Statement/Report. The
4 attachments include the following:

- 5 • **Attachment** - Central Valley Project – Friant Water District Exhibits
- 6 • **Attachment** - Socioeconomic Tables for the Restoration Area
- 7 • **Attachment** - Table of Values for Main Crop Types in Fresno, Kern, Kings,
8 Madera, Merced, and Tulare Counties

1

2

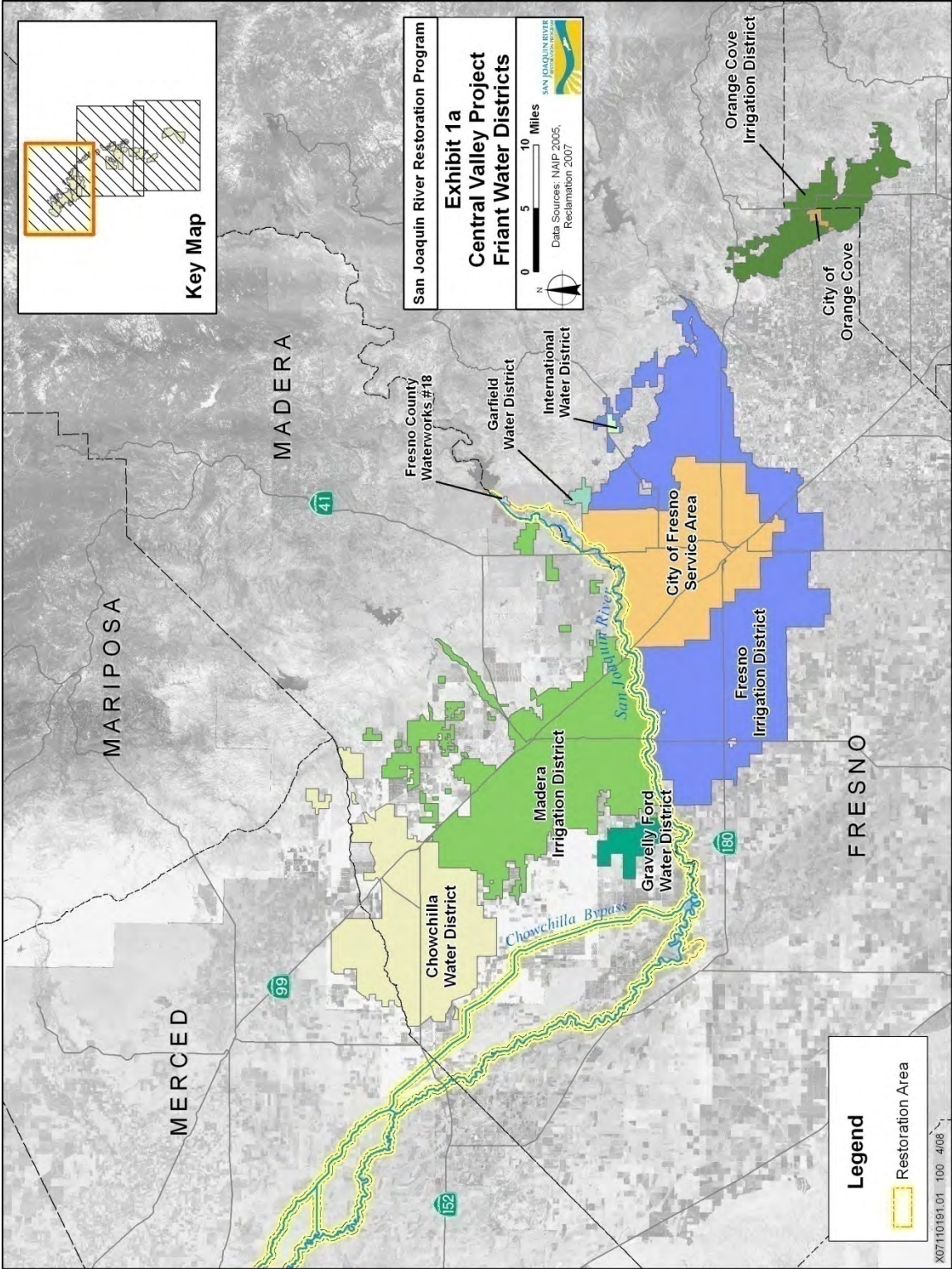
This page left blank intentionally.

Attachment

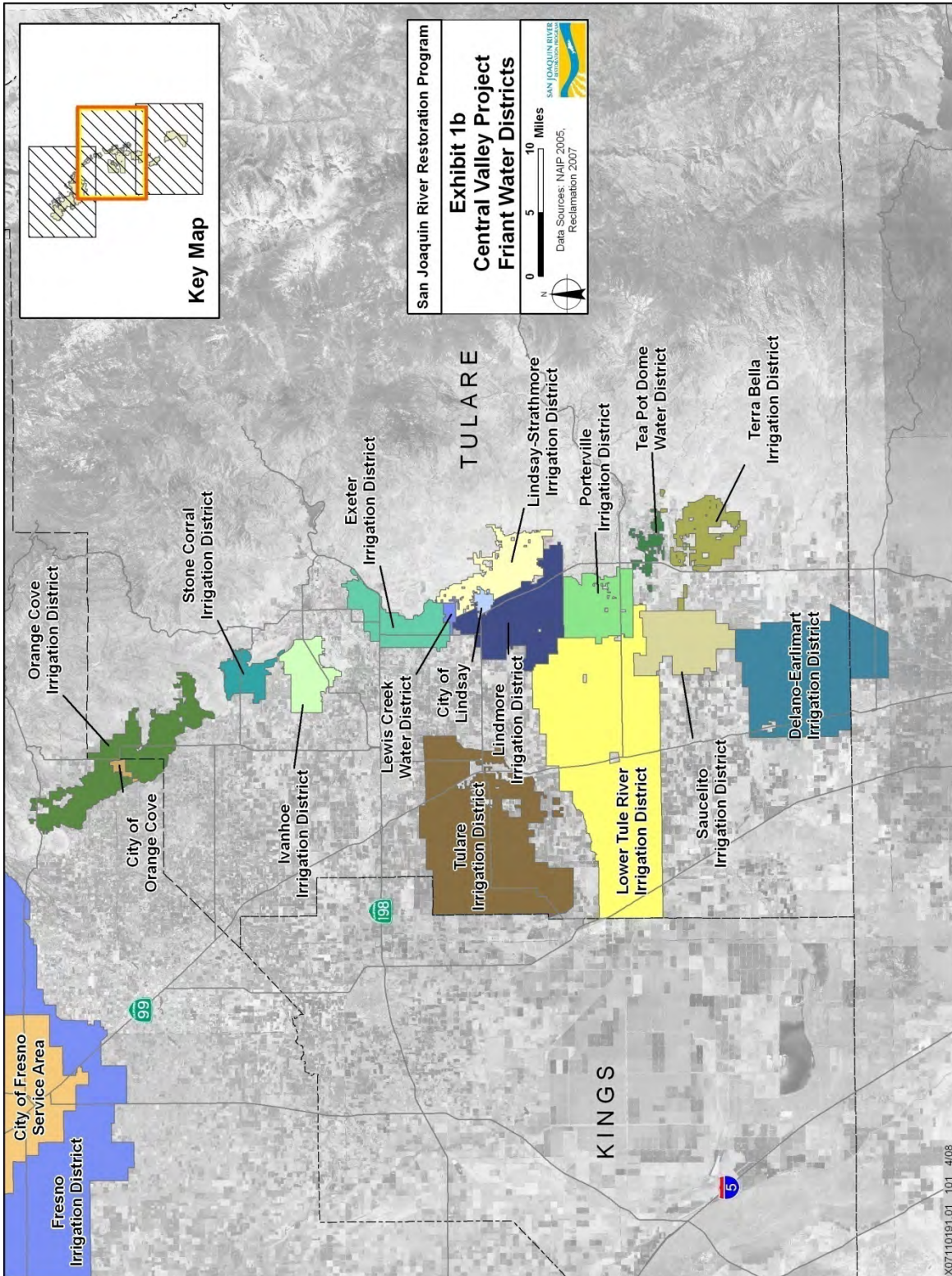
Central Valley Project – Friant Water Districts Exhibits

**Draft
Socioeconomics Appendix**

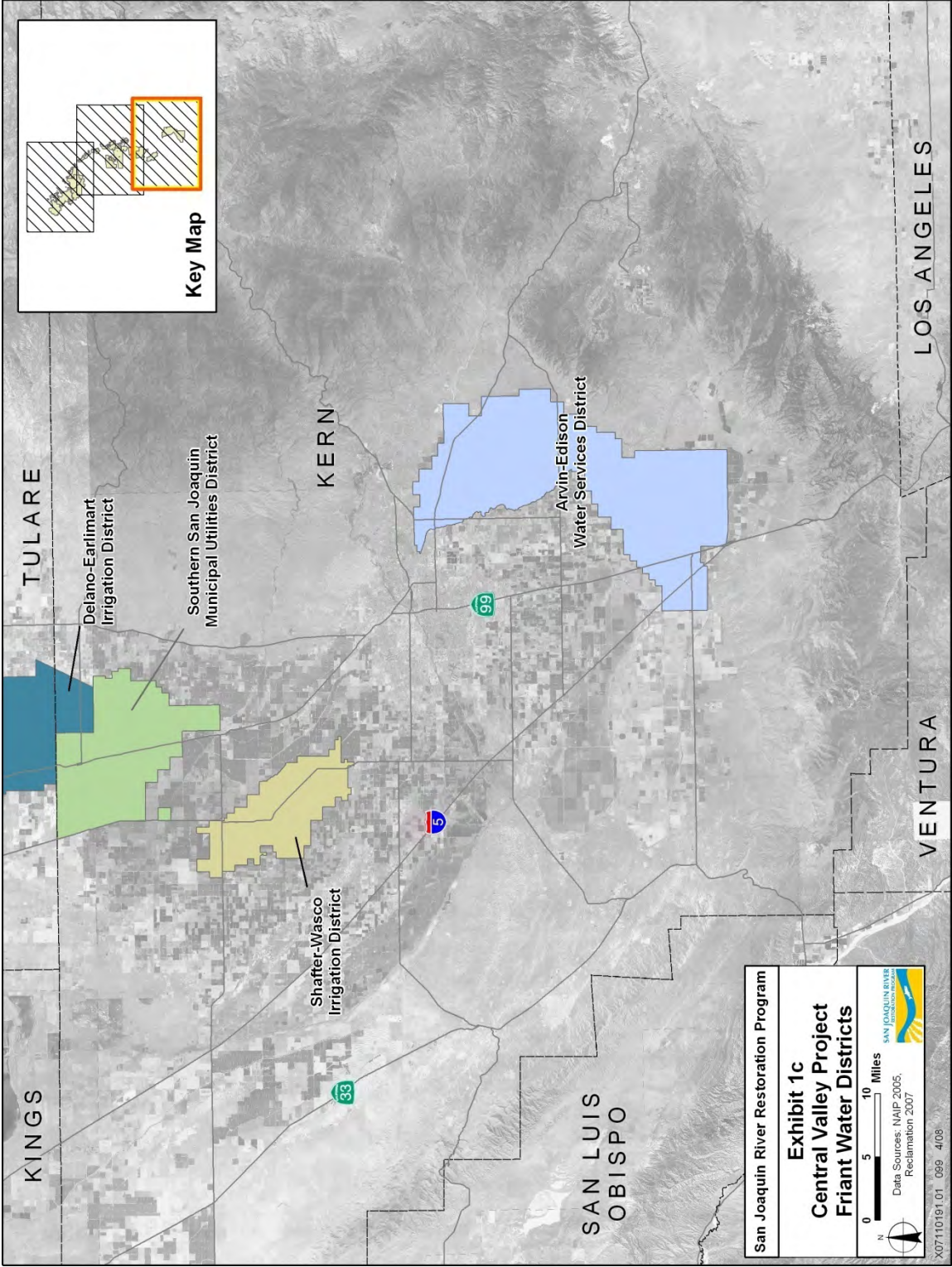




This page left blank intentionally.



This page left blank intentionally.



This page left blank intentionally.

Attachment

Socioeconomic Tables for the Restoration Area

**Draft
Socioeconomics Appendix**



Table A-1. Friant Division Water Contractors Service Areas Counties and California – Race and Ethnicity – 2000 and 2006

	Fresno County			Kern County			Kings County			Madera County		
	2000	2006	% Change	2000	2006	% Change	2000	2006	% Change	2000	2006	% Change
White or Caucasian	434,045 (54.3%)	558,271 (62.6%)	28.6	407,581 (61.6%)	460,280 (59.0%)	12.9	69,492 (53.7%)	103,964 (71.1%)	49.6	76,612 (62.2%)	112,675 (77.0%)	47.07
Black or African-American	42,337 (5.3%)	43,431 (4.9%)	2.58	39,798 (6.0%)	42,332 (5.43%)	6.4	10,747 (8.3%)	10,808 (7.4%)	0.6	5,072 (4.1%)	5,231 (3.6%)	3.13
American Indian	12,790 (1.6%)	10,171 (1.1%)	-20.5	9,999 (1.5%)	7,529 (1.0%)	-24.7	2,178 (1.7%)	1,655 (1.1%)	-24.0	3,212 (2.6%)	1,755 (1.2%)	-45.36
Asian	64,362 (8.1%)	78,752 (8.8%)	22.4	22,268 (3.4%)	32,120 (4.1%)	44.2	3,980 (3.1%)	5,480 (3.8%)	37.7	1,566 (1.3%)	2,991 (2.0%)	91.00
Pacific Islander	1,000 (0.1%)	1,045 (0.1%)	4.5	972 (0.2%)	1,030 (0.1%)	6.0	250 (0.2%)	198 (0.1%)	-20.8	210 (0.2%)	0 (0.0%)	-100.00
Other	207,061 (25.9%)	165,758 (18.6%)	-20.0	153,610 (23.2%)	203,375 (26.1%)	32.4	36,611 (28.3%)	18,676 (12.8%)	-49.0	29,979 (24.4%)	17,934 (12.3%)	-40.18
Multiracial	37,812 (4.7%)	34,328 (3.9%)	-9.2	27,417 (4.1%)	33,451 (4.3%)	22.0	6,203 (4.8%)	5,372 (3.7%)	-13.4	6,458 (5.3%)	5,759 (3.9%)	-10.82
Total Minority	481,885 (60.3%)	568,198 (63.7%)	17.9	334,455 (50.6%)	447,136 (57.3%)	33.7	75,644 (58.4%)	89,792 (61.4%)	18.7	65,718 (53.4%)	84,845 (58.0%)	29.10
Hispanic or Latino	351,636 (44.0%)	424,678 (47.6%)	20.8	254,036 (38.4%)	352,415 (45.2%)	38.7	56,461 (43.6%)	69,652 (47.7%)	23.4	54,515 (44.3%)	72,042 (49.2%)	32.15
Total Population	799,407 (100.0%)	891,756 (100.0%)	11.6	661,645 (100.0%)	780,117 (100.0%)	17.9	129,461 (100.0%)	146,153 (100.0%)	12.9	123,109 (100.0%)	146,345 (100.0%)	18.87

Table A-1. Friant Division Water Contractors Service Areas Counties and California – Race and Ethnicity – 2000 and 2006 (Contd.)

	Merced County			Tulare County			Friant Division Water Contractors Service Areas			Restoration Area			California		
	2000	2006	% Change	2000	2006	% Change	2000	2006	% Change	2000	2006	% Change	2000	2006	% Change
White or Caucasian	118,350 (56.2%)	163,576 (66.6%)	38.21	213,751 (58.1%)	312,075 (74.3%)	46.0	1,319,831 (57.6%)	1,710,841 (65.1%)	29.6	629,007 (55.5%)	834,522 (65.0%)	32.67	20,170,059 (59.6%)	21,810,156 (58.8%)	8.13
Black or African-American	8,064 (3.8%)	8,694 (3.5%)	7.81	5,852 (1.6%)	6,983 (1.7%)	19.3	111,870 (4.9%)	117,479 (4.5%)	5.0	55,473 (4.9%)	57,356 (4.5%)	3.39	2,263,882 (6.7%)	2,260,648 (6.2%)	-0.14
American Indian	2,510 (1.2%)	2,165 (0.9%)	-13.75	5,737 (1.6%)	4,636 (1.1%)	-19.2	36,426 (1.6%)	27,911 (1.1%)	-23.4	18,512 (1.6%)	14,091 (1.1%)	-23.88	333,346 (1.0%)	265,963 (0.7%)	-20.21
Asian	14,321 (6.8%)	17,622 (7.2%)	23.05	12,018 (3.3%)	15,104 (3.6%)	25.7	118,515 (5.2%)	152,069 (5.8%)	28.3	80,249 (7.1%)	99,365 (7.7%)	23.82	3,697,513 (10.9%)	4,483,252 (12.3%)	21.25
Pacific Islander	396 (0.2%)	200 (0.1%)	-49.49	408 (0.1%)	192 (0.1%)	-52.9	3,236 (0.1%)	2,665 (0.1%)	-17.6	1,606 (0.1%)	1,245 (0.1%)	-22.48	116,961 (0.4%)	129,483 (0.4%)	10.71
Other	55,013 (26.1%)	44,734 (18.2%)	-18.68	113,317 (30.8%)	73,924 (17.6%)	-34.8	595,591 (26.0%)	524,401 (19.9%)	-12.0	292,053 (25.8%)	228,426 (17.8%)	-21.79	5,682,241 (16.8%)	6,296,602 (17.3%)	10.81
Multiracial	11,900 (5.7%)	8,667 (3.5%)	-27.17	16,938 (4.6%)	6,995 (1.7%)	-58.7	106,728 (4.7%)	94,572 (3.6%)	-11.4	56,170 (5.0%)	48,754 (3.8%)	-13.20	1,607,646 (4.8%)	1,211,445 (3.3%)	-24.64
Total Minority	124,969 (59.4%)	159,056 (64.8%)	27.28	214,105 (58.2%)	263,892 (62.9%)	23.3	1,296,776 (56.6%)	1,612,919 (61.3%)	24.4	672,572 (59.4%)	812,099 (63.3%)	20.8	18,054,858 (53.3%)	20,857,374 (57.2%)	15.52
Hispanic or Latino	95,466 (45.3%)	128,270 (52.2%)	34.36	186,846 (50.8%)	234,435 (55.8%)	25.5	998,960 (43.6%)	1,281,492 (48.7%)	28.3	501,617 (44.3%)	624,990 (48.7%)	24.60	10,966,556 (32.4%)	13,074,155 (35.9%)	19.22
Total Population	210,554 (100.0%)	245,658 (100.0%)	16.67	368,021 (100.0%)	419,909 (100.0%)	14.1	2,292,197 (100.0%)	2,629,938 (100.0%)	14.7	1,133,070 (100.0%)	1,283,759 (100.0%)	13.30	33,871,648 (100.0%)	36,457,549 (100.0%)	7.63

Sources: U.S. Census Bureau 2000, 2006

**Table A-2.
Friant Division Water Contractors Service Areas Counties and California – Age – 2000 and 2006**

Age Cohorts	Fresno County			Kern County			Kings County			Madera County		
	2000	2006	% Change	2000	2006	% Change	2000	2006	% Change	2000	2006	% Change
<5 Years	67,827 (8.5%)	77,163 (8.7%)	13.8	55,707 (8.4%)	65,919 (8.5%)	18.3	10,437 (8.1%)	12,028 (8.2%)	15.2	9,443 (7.7%)	11,327 (7.7%)	20.0
5-9 Years	74,581 (9.3%)	71,239 (8.0%)	-4.5	61,659 (9.3%)	57,919 (7.4%)	-6.1	10,922 (8.4%)	11,236 (7.7%)	2.9	10,519 (8.5%)	9,011 (6.2%)	-14.3
10-14 Years	71,847 (9.0%)	74,143 (8.3%)	3.2	59,544 (9.0%)	68,108 (8.7%)	14.4	10,215 (7.9%)	10,746 (7.4%)	5.2	10,134 (8.2%)	13,237 (9.1%)	30.6
15-19 Years	69,648 (8.7%)	75,920 (8.5%)	9.0	55,224 (8.4%)	63,895 (8.2%)	15.7	10,014 (7.7%)	10,569 (7.2%)	5.5	10,174 (8.3%)	10,993 (7.5%)	8.0
20-24 Years	61,109 (7.6%)	74,845 (8.4%)	22.5	46,811 (7.1%)	65,605 (8.4%)	40.1	11,228 (8.7%)	14,180 (9.7%)	26.3	8,324 (6.8%)	12,338 (8.4%)	48.2
25-34 Years	111,804 (14.0%)	131,575 (14.8%)	17.7	93,251 (14.1%)	125,937 (16.1%)	35.1	23,131 (17.9%)	26,849 (18.4%)	16.1	16,865 (13.7%)	22,847 (15.6%)	35.5
35-44 Years	115,858 (14.5%)	118,972 (13.3%)	2.7	103,676 (15.7%)	108,761 (13.9%)	4.9	22,169 (17.1%)	23,871 (16.3%)	7.7	18,951 (15.4%)	20,737 (14.2%)	9.4
45-54 Years	92,209 (11.5%)	108,398 (12.2%)	17.6	76,557 (11.6%)	95,770 (12.3%)	25.1	13,926 (10.8%)	16,518 (11.3%)	18.6	15,353 (12.5%)	18,216 (12.5%)	18.6
55-64 Years	55,315 (6.9%)	73,468 (8.2%)	32.8	47,162 (7.1%)	60,041 (7.7%)	27.3	7,862 (6.1%)	9,438 (6.5%)	20.0	9,750 (7.9%)	12,903 (8.8%)	32.3
65-74 Years	41,171 (5.2%)	43,517 (4.9%)	5.7	34,287 (5.2%)	37,285 (4.8%)	8.7	5,269 (4.1%)	6,117 (4.2%)	16.1	7,671 (6.2%)	7,410 (5.1%)	-3.4
75 - 84 Years	28,331 (3.5%)	30,036 (3.4%)	6.0	21,310 (3.2%)	24,477 (3.1%)	14.9	3,199 (2.5%)	3,208 (2.2%)	0.3	4,537 (3.7%)	4,872 (3.3%)	7.4
85+ Years	9,707 (1.2%)	12,480 (1.4%)	28.6	6,457 (1.0%)	6,400 (0.8%)	-0.9	1,089 (0.8%)	1,393 (1.0%)	27.9	1,388 (1.1%)	2,454 (1.7%)	76.8
Median Age	29.9	29.9	0.0	29.9	30.0	0.3	29.70	30.20	1.7	32.7	31.9	-2.4
Total Population	799,407 (100.0%)	891,756 (100.0%)	11.6	661,645 (100.0%)	780,117 (100.0%)	17.9	129,461 (100.0%)	146,153 (100.0%)	12.9	123,109 (100.0%)	146,345 (100.0%)	18.9

Table A-2. Friant Division Water Contractors Service Areas Counties and California – Age – 2000 and 2006 (Contd.)

Age Cohorts	Merced County			Tulare County			Friant Division Water Contractors Service Areas			Restoration Area			California		
	2000	2006	% Change	2000	2006	% Change	2000	2006	% Change	2000	2006	% Change	2000	2006	% Change
< 5 Years	18,693 (8.9%)	21,623 (8.8%)	15.7	32,826 (8.9%)	39,135 (9.3%)	19.2	194,933 (8.5%)	227,195 (8.6%)	16.6	95,963 (8.5%)	110,113 (8.6%)	14.7	2,486,981 (7.3%)	2,672,666 (7.3%)	7.5
5-9 Years	21,244 (10.1%)	19,846 (8.1%)	-6.6	35,907 (9.8%)	37,095 (8.8%)	3.3	214,832 (9.4%)	206,346 (7.9%)	-4.0	106,344 (9.4%)	100,096 (7.8%)	-5.9	2,725,880 (8.1%)	2,514,639 (6.9%)	-7.7
10-14 Years	20,609 (9.8%)	22,807 (9.3%)	10.7	34,692 (9.4%)	35,483 (8.5%)	2.3	207,041 (9.0%)	224,524 (8.5%)	8.4	102,590 (9.1%)	110,187 (8.6%)	7.4	2,570,822 (7.6%)	2,700,465 (7.4%)	5.0
15-19 Years	19,216 (9.1%)	22,185 (9.0%)	15.5	33,521 (9.1%)	36,796 (8.8%)	9.8	197,797 (8.6%)	220,358 (8.4%)	11.4	99,038 (8.7%)	109,098 (8.5%)	10.2	2,450,888 (7.2%)	2,738,727 (7.5%)	11.7
20-24 Years	14,572 (6.9%)	20,389 (8.3%)	39.9	26,498 (7.2%)	32,888 (7.8%)	24.1	168,542 (7.4%)	220,245 (8.4%)	30.7	84,005 (7.4%)	107,572 (8.4%)	28.1	2,381,288 (7.0%)	2,697,878 (7.4%)	13.3
25-34 Years	28,311 (13.5%)	36,412 (14.8%)	28.6	49,905 (13.7%)	62,519 (14.9%)	25.3	323,267 (14.1%)	406,139 (15.4%)	25.6	156,980 (13.9%)	190,834 (14.9%)	21.6	5,229,062 (15.4%)	5,232,260 (14.4%)	0.1
35-44 Years	30,345 (14.4%)	33,585 (13.7%)	10.7	51,603 (14.0%)	54,265 (12.9%)	5.2	342,602 (15.0%)	360,191 (13.7%)	5.1	165,154 (14.6%)	173,294 (13.5%)	4.9	5,485,341 (16.2%)	5,525,036 (15.2%)	0.7
45-54 Years	22,903 (10.9%)	27,569 (11.2%)	20.4	41,246 (11.2%)	49,282 (11.7%)	19.5	262,194 (11.4%)	315,753 (12.0%)	20.4	130,465 (11.5%)	154,183 (12.0%)	18.2	4,331,635 (12.8%)	5,017,599 (13.8%)	15.8
55-64 Years	14,657 (7.0%)	18,673 (7.6%)	27.4	25,906 (7.0%)	33,783 (8.1%)	30.4	160,652 (7.0%)	208,306 (7.9%)	29.7	79,722 (7.0%)	105,044 (8.2%)	31.8	2,614,093 (7.7%)	3,430,449 (9.4%)	31.2
65-74 Years	11,119 (5.3%)	12,456 (5.1%)	12.0	18,996 (5.2%)	20,105 (4.8%)	5.8	118,513 (5.2%)	126,890 (4.8%)	7.1	59,961 (5.3%)	63,383 (4.9%)	5.7	1,887,823 (5.6%)	2,002,937 (5.5%)	6.1
75-84 Years	6,786 (3.2%)	7,332 (3.0%)	8.0	12,584 (3.4%)	13,390 (3.2%)	6.4	76,747 (3.4%)	83,315 (3.2%)	8.6	39,654 (3.5%)	42,240 (3.3%)	6.5	1,282,178 (3.8%)	1,400,449 (3.8%)	9.2
85+ Years	2,099 (1.0%)	2,781 (1.1%)	32.5	4,337 (1.2%)	5,168 (1.2%)	19.2	25,077 (1.1%)	30,676 (1.2%)	22.3	13,194 (1.2%)	17,715 (1.4%)	34.3	425,657 (1.3%)	524,444 (1.4%)	23.2
Median Age	29.0	29.3	1.0	29.00	28.70	-1.0	29.70	na	na	30.5	na	na	33.30	34.4	7.5
Total Population	210,554 (100.0%)	245,658 (100.0%)	16.7	368,021 (100.0%)	419,909 (100.0%)	14.1	2,292,197 (100.0%)	2,629,938 (100.0%)	14.7	1,133,070 (100.0%)	1,283,759 (100.0%)	13.3	33,871,648 (100.0%)	36,457,549 (100.0%)	7.6

Sources: U.S. Census Bureau 2000, 2006

**Table A-3.
Delta Study Area and California – Race and Ethnicity – 2000 and 2006**

	Contra Costa County			Sacramento County			San Joaquin County		
	2000	2006	% Change	2000	2006	% Change	2000	2006	% Change
White or Caucasian	621,490 (65.5%)	611,204 (59.7%)	-1.7	783,240 (64.0%)	836,709 (60.9%)	6.83	327,607 (58.1%)	417,339 (62.0%)	27.4
Black or African-American	88,813 (9.4%)	94,010 (9.2%)	5.9	121,804 (10.0%)	139,081 (10.1%)	14.2	37,689 (6.7%)	47,524 (7.1%)	26.1
American Indian	5,830 (0.6%)	4,428 (0.4%)	-24.1	13,359 (1.1%)	13,620 (1.0%)	1.95	6,377 (1.1%)	5,919 (0.9%)	-7.2
Asian	103,993 (11.0%)	136,508 (13.3%)	31.3	134,899 (11.0%)	188,021 (13.7%)	39.4	64,283 (11.4%)	95,344 (14.2%)	48.3
Pacific Islander	3,466 (0.4%)	4,351 (0.4%)	25.5	7,264 (0.6%)	10,942 (0.8%)	50.6	1,955 (0.4%)	3,047 (0.5%)	55.9
Other	76,510 (8.1%)	133,332 (13.0%)	74.3	91,541 (7.5%)	128,244 (9.3%)	40.1	91,613 (16.3%)	74,720 (11.1%)	-18.4
Multiracial	48,714 (5.1%)	40,486 (4.0%)	-16.9	71,392 (5.8%)	58,107 (4.2%)	-18.6	34,074 (6.1%)	29,277 (4.4%)	-14.1
Total Minority	399,407 (42.1%)	494,031 (48.2%)	23.7	516,844 (42.2%)	652,919 (47.5%)	26.3	296,596 (52.6%)	406,339 (60.4%)	37.0
Hispanic or Latino	167,776 (17.7%)	224,134 (21.9%)	33.6	195,890 (16.0%)	265,550 (19.3%)	35.6	172,073 (30.5%)	240,636 (35.8%)	39.9
Total Population	948,816 (100.0%)	1,024,319 (100.0%)	8.0	1,223,499 (100.0%)	1,374,724 (100.0%)	12.4	563,598 (100.0%)	673,170 (100.0%)	19.4

Table A-3. Delta Study Area and California – Race and Ethnicity – 2000 and 2006 (Contd.)

	Solano County			Yolo County			SSJR Delta			California		
	2000	2006	% Change	2000	2006	% Change	2000	2006	% Change	2000	2006	% Change
White or Caucasian	222,387 (56.4%)	212,785 (51.7%)	-4.3	114,129 (67.7%)	124,404 (66.1%)	9.0	2,068,853 (62.7%)	2,202,441 (60.0%)	6.5	20,170,059 (59.6%)	21,810,156 (58.8%)	8.1
Black or African-American	58,827 (14.9%)	61,027 (14.8%)	3.7	3,425 (2.0%)	3,909 (2.1%)	14.1	310,558 (9.4%)	345,551 (9.4%)	11.3	2,263,882 (6.7%)	2,260,648 (6.2%)	-0.1
American Indian	3,110 (0.8%)	3,860 (0.9%)	24.1	1,953 (1.2%)	1,847 (1.0%)	-5.4	30,629 (0.9%)	29,674 (0.8%)	-3.1	333,346 (1.0%)	265,963 (0.7%)	-20.2
Asian	50,299 (12.8%)	58,781 (14.3%)	16.9	16,614 (9.9%)	23,380 (12.4%)	40.7	370,088 (11.2%)	502,034 (13.7%)	35.7	3,697,513 (10.9%)	4,483,252 (12.3%)	21.3
Pacific Islander	3,078 (0.8%)	3,055 (0.7%)	-0.8	507 (0.3%)	646 (0.3%)	27.4	16,270 (0.5%)	22,041 (0.6%)	35.5	116,961 (0.4%)	129,483 (0.4%)	10.7
Other	31,612 (8.0%)	51,915 (12.6%)	64.2	23,214 (13.8%)	25,557 (13.6%)	10.1	314,490 (9.5%)	413,768 (11.3%)	31.6	5,682,241 (16.8%)	6,296,602 (17.3%)	10.8
Multiracial	25,229 (6.4%)	20,257 (4.9%)	-19.7	8,818 (5.2%)	8,342 (4.4%)	-5.40	188,227 (5.7%)	156,469 (4.3%)	-16.9	1,607,646 (4.8%)	1,211,445 (3.3%)	-24.6
Total Minority	200,260 (50.8%)	230,811 (56.1%)	15.3	70,718 (41.9%)	86,281 (45.9%)	22.0	1,483,825 (45.0%)	1,870,381 (50.9%)	26.1	18,054,858 (53.3%)	20,857,374 (57.2%)	15.5
Hispanic or Latino	69,598 (17.6%)	90,417 (22.0%)	29.9	43,707 (25.9%)	52,781 (28.1%)	20.8	649,044 (19.7%)	873,518 (23.8%)	34.6	10,966,556 (32.4%)	13,074,155 (35.9%)	19.2
Total Population	394,542 (100.0%)	411,680 100.0%	4.3	168,660 (100.0%)	188,085 (100.0%)	11.5	3,299,115 (100.0%)	3,671,978 (100.0%)	11.3	33,871,648 (100.0%)	36,457,549 (100.0%)	7.6

Sources: U.S. Census Bureau 2000, 2006

**Table A-4.
Delta Study Area and California – Age – 2000 and 2006**

Age Cohorts	Contra Costa County			Sacramento County			San Joaquin County		
	2000	2006	% Change	2000	2006	% Change	2000	2006	% Change
< 5 Years	66,128	66,230	0.15	88,922	100,782	13.34	44,960	53,604	19.23
5-9 Years	73,031	69,911	-4.27	99,028	96,874	-2.18	50,511	51,865	2.68
10-14 Years	72,017	72,590	0.80	95,316	101,098	6.07	49,896	54,079	8.38
15-19 Years	63,124	73,266	16.07	87,895	100,049	13.83	47,915	56,677	18.29
20-24 Years	50,696	66,110	30.40	82,218	94,754	15.25	37,668	49,546	31.53
25-34 Years	126,387	126,721	0.26	179,839	209,993	16.77	75,540	103,303	36.75
35-44 Years	163,755	154,991	-5.35	199,003	204,517	2.77	86,601	95,744	10.56
45-54 Years	141,988	159,321	12.21	160,742	189,001	17.58	68,748	85,647	24.58
55-64 Years	84,418	116,935	38.52	94,661	126,726	33.87	41,960	57,428	36.86
65-74 Years	54,722	61,115	11.68	71,092	76,814	8.05	30,673	32,983	7.53
75-84 Years	39,179	42,672	8.92	49,266	52,331	6.22	21,619	23,761	9.91
85+ Years	13,371	14,457	8.12	15,517	21,785	40.39	7,507	8,533	13.67
Median Age	36.40	37.50	3.02	33.80	34.10	0.89	31.90	31.50	-1.25
Total Population	948,816	1,024,319	7.96	1,223,499	1,374,724	12.36	563,598	673,170	19.44

Table A-4. Delta Study Area and California – Age – 2000 and 2006 (Contd.)

Age Cohorts	Solano County			Yolo County			Delta Study Area			California		
	2000	2006	% Change	2000	2006	% Change	2000	2006	% Change	2000	2006	% Change
< 5 Years	28,784	28,612	-0.60	10,964	12,270	11.91	239,758	39,135 (9.3%)	9.07	2,486,981	2,672,666	7.47
5–9 Years	32,125	29,310	-8.76	12,264	11,799	-3.79	266,959	37,095 (8.8%)	-2.70	2,725,880	2,514,639	-7.75
10–14 Years	32,378	30,362	-6.23	12,177	12,218	0.34	261,784	35,483 (8.5%)	3.27	2,570,822	2,700,465	5.04
15–19 Years	29,376	31,467	7.12	17,219	20,233	17.50	245,529	36,796 (8.8%)	14.73	2,450,888	2,738,727	11.74
20–24 Years	25,492	28,993	13.73	20,797	23,087	11.01	216,871	32,888 (7.8%)	21.04	2,381,288	2,697,878	13.29
25–34 Years	55,856	56,305	0.80	23,677	27,349	15.51	461,299	62,519 (14.9%)	13.52	5,229,062	5,232,260	0.06
35–44 Years	67,638	60,595	-10.41	23,866	24,813	3.97	540,863	54,265 (12.9%)	-0.04	5,485,341	5,525,036	0.72
45–54 Years	55,319	61,903	11.90	20,301	22,780	12.21	447,098	49,282 (11.7%)	16.00	4,331,635	5,017,599	15.84
55–64 Years	30,148	41,075	36.24	11,613	15,270	31.49	262,800	33,783 (8.1%)	36.01	2,614,093	3,430,449	31.23
65–74 Years	20,246	22,958	13.40	8,056	9,177	13.92	184,789	20,105 (4.8%)	9.88	1,887,823	2,002,937	6.10
75–84 Years	13,265	14,918	12.46	5,753	6,873	19.47	129,082	13,390 (3.2%)	8.89	1,282,178	1,400,449	9.22
85+ Years	3,915	5,182 (1.7%)	32.36	1,973 (1.0%)	2,216	12.32	42,283 (1.2%)	5,168 (1.2%)	23.39	425,657	524,444	23.21
Median Age	33.90	35.20	3.83	29.50	29.70	0.68	N/A	N/A	N/A	33	34.40	3.30
Total Population	394,542	411,680	4.34	168,660	188,085	11.52	3,299,115	3,671,978	11.30	33,871,648	36,457,549	7.63

Sources: U.S. Census Bureau 2000, 2006. www.census.gov

Table A5: Income Trends - Restoration Area; Fresno County Census Tracts: 2000

	Fresno County Study Area		39		41		42.06		42.07	
Total Household Income	20,984		1,564		832		1,569		1,102	
<\$30k per year	7,033	33.52%	863	55.18%	335	40.26%	210	13.38%	533	48.37%
\$30k - <\$50k per year	4,508	21.48%	326	20.84%	210	25.24%	393	25.05%	317	28.77%
\$50k - <\$100k per year	6,434	30.66%	275	17.58%	247	29.69%	867	55.26%	142	12.89%
\$100k - <\$200k per year	2,331	11.11%	94	6.01%	29	3.49%	94	5.99%	78	7.08%
>\$200,000 per year	678	3.23%	6	0.38%	11	1.32%	5	0.32%	32	2.90%
Per Capita Income			\$5,508		\$2,682		\$4,582		\$3,866	
Total Household Income	42.08		43.01		44.04		44.07		55.03	
<\$30k per year	1,778		1,433		1,146		3,137		1,477	
\$30k - <\$50k per year	190	10.69%	146	10.19%	665	58.03%	1,002	31.94%	245	16.59%
\$50k - <\$100k per year	271	15.24%	115	8.03%	248	21.64%	697	22.22%	210	14.22%
\$100k - <\$200k per year	922	51.86%	475	33.15%	222	19.37%	949	30.25%	555	37.58%
>\$200,000 per year	311	17.49%	430	30.01%	5	0.44%	370	11.79%	400	27.08%
Per Capita Income	84	4.72%	267	18.63%	6	0.52%	119	3.79%	67	4.54%
	\$4,899		\$3,619		\$3,610		\$7,388		\$33,775	
Total Household Income	55.15		64.01		83.01		84.01		84.02	
<\$30k per year	510		3,210		864		1,711		651	
\$30k - <\$50k per year	160	31.37%	926	0.37%	547	1.51%	831	48.57%	380	58.37%
\$50k - <\$100k per year	114	22.35%	731	0.29%	210	0.58%	493	28.81%	173	26.57%
\$100k - <\$200k per year	172	33.73%	1,086	0.43%	101	0.28%	323	18.88%	98	15.05%
>\$200,000 per year	57	11.18%	409	0.16%	0	0.00%	54	3.16%	0	0.00%
Per Capita Income	7	1.37%	58	0.02%	6	0.02%	10	0.58%	0	0.00%
	\$22,124		\$20,561		\$6,785		\$9,038		\$9,274	

Source: US Census Bureau, 2000

Table A5: Income Trends - Restoration Area, Merced and Madera County Census Tracts: 2000

	Merced County Study Area		4		9.01		20		21	
Total Household Income	7,762		3,030	1,022	2,476	1,234				
<\$30k per year	2,982	38.42%	995	476	954	557	38.53%			
\$30k - <\$50k per year	2,081	26.81%	801	221	615	268	24.84%			
\$50k - <\$100k per year	2,360	30.40%	1,056	275	724	305	29.24%			
\$100k - <\$200k per year	427	5.50%	159	29	156	83	6.30%			
>\$200,000 per year	88	1.13%	19	21	27	21	1.09%			
Per Capita Income			\$9,348	\$3,433	\$7,144	\$3,848				
Total Household Income	24									
<\$30k per year	2,479									
\$30k - <\$50k per year	1,370	55.26%								
\$50k - <\$100k per year	458	18.48%								
\$100k - <\$200k per year	497	20.05%								
>\$200,000 per year	111	4.48%								
Per Capita Income	43	1.73%								
Total Household Income	510		1,762	447	1,860	10				
<\$30k per year	160	31.37%	743	215	684	36.77%				
\$30k - <\$50k per year	114	22.35%	456	109	387	20.81%				
\$50k - <\$100k per year	172	33.73%	407	100	518	27.85%				
\$100k - <\$200k per year	57	11.18%	140	22	242	13.01%				
>\$200,000 per year	7	1.37%	16	1	29	1.56%				
Per Capita Income	\$22,124		\$19,071	\$12,718	\$17,945					

Source: US Census Bureau, 2000

Table A6: Poverty Status by Age - Restoration Area; Fresno County Census Tracts: 2000

	55.15	64.01	83.01	84.01	84.02
Total	1,214	8,864	3,873	7,044	2,242
Income Below Poverty Level:					
Under 5 years	78	943	1,425	1,849	600
5 years	0	91	195	217	49
6 to 11 years	12	23	15	40	25
12 to 17 years	0	207	141	325	94
18 to 64 years	0	80	192	322	114
65 to 74 years	51	460	875	842	303
75 years and over	15	48	7	62	15
	0	34	0	41	0
	6.43%	10.64%	36.79%	26.25%	26.76%
	0.00%	9.65%	13.68%	11.74%	8.17%
	15.38%	2.44%	1.05%	2.16%	4.17%
	0.00%	21.95%	9.89%	17.58%	15.67%
	0.00%	8.48%	13.47%	17.41%	19.00%
	65.38%	48.78%	61.40%	45.54%	50.50%
	19.23%	5.09%	0.49%	3.35%	2.50%
	0.00%	3.61%	0.00%	2.22%	0.00%
Income at or Above Poverty Level:					
Under 5 years	1,136	7,921	2,448	5,195	1,642
5 years	53	317	164	423	179
6 to 11 years	0	137	68	64	11
12 to 17 years	69	599	170	698	213
18 to 64 years	154	906	359	660	127
65 to 74 years	672	4,920	1,569	3,061	999
75 years and over	113	640	95	183	82
	75	402	23	106	31
	93.57%	89.36%	63.21%	73.75%	73.24%
	4.67%	4.00%	6.70%	8.14%	10.90%
	0.00%	1.73%	2.78%	1.23%	0.67%
	6.07%	7.56%	6.94%	13.44%	12.97%
	13.56%	11.44%	14.67%	12.70%	7.73%
	59.15%	62.11%	64.09%	58.92%	60.84%
	9.95%	8.08%	3.88%	3.52%	4.99%
	6.60%	5.08%	0.94%	2.04%	1.89%

Source: US Census Bureau, 2000.

Table A6: Poverty Status by Age - Restoration Area; Merced and Madera County Census Tracts: 2000

	Merced County Study Area		4		9.01		20		21			
Total	14,425	9,348	3,433	7,144	3,848	2,964	77.03%	171	5.77%	58	1.96%	
Income Below Poverty Level:	2,877	1,129	702	1,291	884	2,964	77.03%	171	5.77%	58	1.96%	
Under 5 years	445	65	65	186	129	171	5.77%	171	5.77%	58	1.96%	
5 years	84	18	26	18	22	58	1.96%	58	1.96%	265	8.94%	
6 to 11 years	640	181	125	210	124	309	10.43%	309	10.43%	1,741	58.74%	
12 to 17 years	523	200	69	141	113	1,741	58.74%	1,741	58.74%	324	10.93%	
18 to 64 years	2,036	621	393	579	443	2,964	77.03%	2,964	77.03%	171	5.77%	
65 to 74 years	120	35	16	64	5	48	5.43%	48	5.43%	96	3.24%	
75 years and over	158	9	8	93	48	2,964	77.03%	2,964	77.03%	171	5.77%	
Income at or Above Poverty Level:	11,548	8,219	2,731	5,853	2,964	77.03%	171	5.77%	58	1.96%	265	8.94%
Under 5 years	1,346	494	280	401	171	5.77%	171	5.77%	58	1.96%	265	8.94%
5 years	289	114	57	60	265	8.94%	265	8.94%	309	10.43%	1,741	58.74%
6 to 11 years	1,814	750	315	484	709	12.11%	709	12.11%	3,322	56.76%	1,741	58.74%
12 to 17 years	2,205	925	262	709	1,741	58.74%	1,741	58.74%	324	10.93%	96	3.24%
18 to 64 years	6,648	4,904	1,585	3,322	2,964	77.03%	2,964	77.03%	171	5.77%	58	1.96%
65 to 74 years	1,450	534	135	457	324	10.93%	324	10.93%	171	5.77%	58	1.96%
75 years and over	1,111	498	97	420	96	3.24%	96	3.24%	171	5.77%	58	1.96%
Madera County Study Area	12,096	4,250	1,559	6,287	1,559	12.88%	309	5.84%	88	1.66%	573	10.82%
Total	1,783	555	236	992	628	3.53%	309	5.84%	88	1.66%	573	10.82%
Income Below Poverty Level:	224	86	20	118	118	11.90%	21	2.12%	150	15.12%	127	12.80%
Under 5 years	33	8	4	21	21	2.12%	150	15.12%	505	50.91%	44	4.44%
6 to 11 years	268	76	42	150	127	12.80%	505	50.91%	44	4.44%	27	2.72%
12 to 17 years	174	34	13	127	127	12.80%	44	4.44%	27	2.72%	1,323	84.86%
18 to 64 years	931	282	144	505	505	50.91%	92	6.95%	309	5.84%	88	1.66%
65 to 74 years	96	47	5	44	44	4.44%	20	1.51%	573	10.82%	524	9.90%
75 years and over	57	22	8	27	27	2.72%	161	12.17%	524	9.90%	3,196	60.36%
Income at or Above Poverty Level:	10,313	3,695	1,323	5,295	5,295	84.86%	92	6.95%	309	5.84%	88	1.66%
Under 5 years	533	132	92	309	309	5.84%	20	1.51%	573	10.82%	524	9.90%
5 years	163	55	20	88	88	1.66%	161	12.17%	524	9.90%	3,196	60.36%
6 to 11 years	923	189	161	573	573	10.82%	755	57.07%	70	5.29%	40	3.02%
12 to 17 years	1,059	350	185	524	524	9.90%	70	5.29%	40	3.02%	324	10.93%
18 to 64 years	6,087	2,136	755	3,196	3,196	60.36%	40	3.02%	324	10.93%	171	5.77%
65 to 74 years	908	509	70	329	329	10.93%	40	3.02%	324	10.93%	171	5.77%
75 years and over	640	324	40	276	276	5.21%	40	3.02%	324	10.93%	171	5.77%

Source: US Census Bureau, 2000

Table A-7. Deliveries and Reductions to Deliveries by Contractor – Acre-Feet

Contractor	Full Contract				Average Delivery (1922-2004)	
	Class 1	% of Total Class 1	Class 2	% of Total Class 2	Class 1	Class 2
Friant-Kern Canal Agricultural						
Arvin-Edison Water Storage District	40,000	5.0	311,675	22.2	37,700	87,295
Delano-Earlimart Irrigation District	108,800	13.6	74,500	5.3	102,545	20,866
Exeter Irrigation District	11,500	1.4	19,000	1.4	10,839	5,322
Fresno Irrigation District	0	0.0	75,000	5.4	0	21,006
Garfield Water District	3,500	0.4	0	0.0	3,299	0
International Water District	1,200	0.2	0	0.0	1,131	0
Ivanhoe Irrigation District	7,700	1.0	7,900	0.6	7,257	2,213
Lewis Creek Water District	1,450	0.2	0	0.0	1,367	0
Lindmore Irrigation District	33,000	4.1	22,000	1.6	31,103	6,162
Lindsay-Strathmore Irrigation District	27,500	3.4	0	0.0	25,919	0
Lower Tule River Irrigation District	61,200	7.7	238,000	17.0	57,681	66,660
Orange Cove Irrigation District	39,200	4.9	0	0.0	36,946	0
Porterville Irrigation District	16,000	2.0	30,000	2.1	15,080	8,403
Saucelito Irrigation District	21,200	2.7	32,800	2.3	19,981	9,187
Shafter-Wasco Irrigation District	50,000	6.3	39,600	2.8	47,125	11,091
Southern San Joaquin MUD	97,000	12.1	50,000	3.6	91,423	14,004
Stone Corral Irrigation District	10,000	1.3	0	0.0	9,425	0
Tea Pot Dome Water District	7,500	0.9	0	0.0	7,069	0
Terra Bella Irrigation District	29,000	3.6	0	0.0	27,333	0
Tulare Irrigation District	30,000	3.8	141,000	10.1	28,275	39,492
Madera Canal Agricultural						
Chowchilla Water District	55,000	6.9	160,000	11.4	51,838	44,813
Madera Irrigation District	85,000	10.6	186,000	13.3	80,113	52,096
San Joaquin River Agricultural						
Gravelly Ford Water District	0	0.0	14,000	1.0	0	3,921
Friant Division Municipal and Industrial						
City of Fresno	60,000	7.5			56,550	0
City of Orange Cove	1,400	0.2			1,320	0
City of Lindsay	2,500	0.3			2,356	0
Fresno County Waterworks District No. 18	150	0.0			141	0
Madera County	200	0.0			189	0
Total	800,000	100.0	1,401,475	100.0	754,005	392,531

**Table A-7. Deliveries and Reductions to Deliveries by Contractor – Acre-Feet
(Contd.)**

Contractor	2000		2001		2002	
	Class 1	Class 2	Class 1	Class 2	Class 1	Class 2
Friant-Kern Canal Agricultural						
Arvin-Edison Water Storage District	40,000	52,985	40,000	15,584	40,000	24,934
Delano-Earlimart Irrigation District	108,800	12,665	108,800	3,725	108,800	5,960
Exeter Irrigation District	11,500	3,230	11,500	950	11,500	1,520
Fresno Irrigation District	0	12,750	0	3,750	0	6,000
Garfield Water District	3,500	0	3,500	0	3,500	0
International Water District	1,200	0	1,200	0	1,200	0
Ivanhoe Irrigation District	7,700	1,343	7,700	395	7,700	632
Lewis Creek Water District	1,450	0	1,450	0	1,450	0
Lindmore Irrigation District	33,000	3,740	33,000	1,100	33,000	1,760
Lindsay-Strathmore Irrigation District	27,500	0	27,500	0	27,500	0
Lower Tule River Irrigation District	61,200	40,460	61,200	11,900	61,200	19,040
Orange Cove Irrigation District	39,200	0	39,200	0	39,200	0
Porterville Irrigation District	16,000	5,100	16,000	1,500	16,000	2,400
Saucelito Irrigation District	21,200	5,576	21,200	1,640	21,200	2,624
Shafter-Wasco Irrigation District	50,000	6,732	50,000	1,980	50,000	3,168
Southern San Joaquin MUD	97,000	8,500	97,000	2,500	97,000	4,000
Stone Corral Irrigation District	10,000	0	10,000	0	10,000	0
Tea Pot Dome Water District	7,500	0	7,500	0	7,500	0
Terra Bella Irrigation District	29,000	0	29,000	0	29,000	0
Tulare Irrigation District	30,000	23,970	30,000	7,050	30,000	11,280
Madera Canal Agricultural		0		0		
Chowchilla Water District	55,000	27,200	55,000	8,000	55,000	12,800
Madera Irrigation District	85,000	31,620	85,000	9,300	85,000	14,880
San Joaquin River Agricultural		0		0		
Gravelly Ford Water District	0	2,380	0	700	0	1,120
Friant Division Municipal and Industrial						
City of Fresno	60,000		60,000		60,000	
City of Orange Cove	1,400		1,400		1,400	
City of Lindsay	2,500		2,500		2,500	
Fresno County Waterworks District No. 18	150		150		150	
Madera County	200		200		200	
Total	800,000	238,251	800,000	70,074	800,000	112,118

**Table A-7. Deliveries and Reductions to Deliveries by Contractor – Acre-Feet
(Contd.)**

Contractor	2003		2004		2005		2006	
	Class 1	Class 2	Class 1	Class 2	Class 1	Class 2*	Class 1	Class 2*
Friant-Kern Canal Agricultural								
Arvin-Edison Water Storage District	40,000	15,584	40,000	24,934	40,000	233,756	40,000	233,756
Delano-Earlimart Irrigation District	108,800	3,725	108,800	5,960	108,800	55,875	108,800	55,875
Exeter Irrigation District	11,500	950	11,500	1,520	11,500	14,250	11,500	14,250
Fresno Irrigation District	0	3,750	0	6,000	0	56,250	0	56,250
Garfield Water District	3,500	0	3,500	0	3,500	0	3,500	0
International Water District	1,200	0	1,200	0	1,200	0	1,200	0
Ivanhoe Irrigation District	7,700	395	7,700	632	7,700	5,925	7,700	5,925
Lewis Creek Water District	1,450	0	1,450	0	1,450	0	1,450	0
Lindmore Irrigation District	33,000	1,100	33,000	1,760	33,000	16,500	33,000	16,500
Lindsay-Strathmore Irrigation District	27,500	0	27,500	0	27,500	0	27,500	0
Lower Tule River Irrigation District	61,200	11,900	61,200	19,040	61,200	178,500	61,200	178,500
Orange Cove Irrigation District	39,200	0	39,200	0	39,200	0	39,200	0
Porterville Irrigation District	16,000	1,500	16,000	2,400	16,000	22,500	16,000	22,500
Saucelito Irrigation District	21,200	1,640	21,200	2,624	21,200	24,600	21,200	24,600
Shafter-Wasco Irrigation District	50,000	1,980	50,000	3,168	50,000	29,700	50,000	29,700
Southern San Joaquin MUD	97,000	2,500	97,000	4,000	97,000	37,500	97,000	37,500
Stone Corral Irrigation District	10,000	0	10,000	0	10,000	0	10,000	0
Tea Pot Dome Water District	7,500	0	7,500	0	7,500	0	7,500	0
Terra Bella Irrigation District	29,000	0	29,000	0	29,000	0	29,000	0
Tulare Irrigation District	30,000	7,050	30,000	11,280	30,000	105,750	30,000	105,750
Madera Canal Agricultural						0		0
Chowchilla Water District	55,000	8,000	55,000	12,800	55,000	120,000	55,000	120,000
Madera Irrigation District	85,000	9,300	85,000	14,880	85,000	139,500	85,000	139,500
San Joaquin River Agricultural						0		0
Gravelly Ford Water District	0	700	0	1,120	0	10,500	0	10,500
Friant Division Municipal and Industrial								
City of Fresno	60,000		60,000		60,000		60,000	
City of Orange Cove	1,400		1,400		1,400		1,400	
City of Lindsay	2,500		2,500		2,500		2,500	
Fresno County Waterworks District No. 18	150		150		150		150	
Madera County	200		200		200		200	
Total	800,000	70,074	800,000	112,118	800,000	1,051,106	800,000	1,051,106

Sources: SJRRP 2007. http://www.usbr.gov/mp/cvo/vungvari/water_allocations_historical.pdf; <http://www.usbr.gov/mp/cvo/deliv.html>

Note: * Uncontrolled season; 75% allocation assumed per U.S. Department of the Interior, Bureau of Reclamation.

**Table A-8.
Agricultural Production Values – 2000 to 2006**

	(Value by Year)	Fresno County	Kern County	Kings County	Madera County	Merced County	Tulare County
2000	2000 Nominal Value	\$3,418,622,400	\$2,208,541,100	\$885,062,000	\$748,199,000	\$1,538,537,600	\$3,066,533,200
	2006 Constant Dollars	\$4,002,289,638	\$2,585,609,092	\$1,036,170,146	\$875,940,292	\$1,801,214,751	\$3,590,087,648
2001	2001 Nominal Value	\$3,215,184,800	\$2,254,306,200	\$951,950,000	\$650,441,300	\$1,703,039,000	\$3,492,476,600
	2006 Constant Dollars	\$3,662,040,993	\$2,567,616,554	\$1,084,254,915	\$740,841,616	\$1,939,732,556	\$3,977,871,653
2002	2002 Nominal Value	\$3,415,591,000	\$2,586,246,500	\$1,023,807,000	\$778,385,000	\$1,730,720,000	\$3,200,551,900
	2006 Constant Dollars	\$3,827,588,358	\$2,898,206,194	\$1,147,301,229	\$872,275,798	\$1,939,483,891	\$3,586,610,689
2003	2003 Nominal Value	\$4,052,766,500	\$2,477,526,000	\$1,136,966,000	\$760,246,000	\$1,918,230,000	\$3,294,660,000
	2006 Constant Dollars	\$4,440,422,426	\$2,714,506,748	\$1,245,719,270	\$832,965,183	\$2,101,712,870	\$3,609,801,392
2004	2004 Nominal Value	\$4,314,161,200	\$2,871,834,400	\$1,292,090,000	\$1,069,951,000	\$2,301,650,000	\$4,037,351,000
	2006 Constant Dollars	\$4,604,208,034	\$3,064,911,672	\$1,378,958,941	\$1,141,885,238	\$2,456,393,011	\$4,308,787,514
2005	2005 Nominal Value	\$4,284,984,200	\$3,247,017,000	\$1,407,091,300	\$1,105,044,000	\$2,352,689,000	\$4,274,770,500
	2006 Constant Dollars	\$4,423,209,499	\$3,351,759,485	\$1,452,481,343	\$1,140,690,581	\$2,428,582,195	\$4,412,666,325
2006	2006 Nominal Value	\$4,385,811,100	\$2,988,284,500	\$1,289,186,000	\$1,032,500,000	\$2,247,459,000	\$3,765,433,700
	Average in 2006 Constant Dollars	\$4,192,224,293	\$2,881,556,321	\$1,233,438,835	\$948,156,958	\$2,130,654,039	\$3,893,036,989

Source: National Agricultural Statistics Service 2007

This page left blank intentionally.

Attachment

Table of Values for Main Crop Types in Fresno, Kern, Kings, Madera, Merced, and Tulare Counties

**Draft
Socioeconomics Appendix**

**SAN JOAQUIN RIVER
RESTORATION PROGRAM**



Table 1. Values for Main Crop Types (2000 – 2002)

Fresno County (Value by Year)	2000		2001		2002	
	2000 Nominal Value	2006 Constant Dollars	2001 Nominal Value	2006 Constant Dollars	2002 Nominal Value	2006 Constant Dollars
Apiary	\$9,209,000	\$10,781,268	\$9,798,900	\$11,160,781	\$11,179,400	\$12,527,888
Aquaculture	\$0	\$0	\$0	\$0	\$0	\$0
Field Crops	\$507,952,000	\$594,675,512	\$515,807,000	\$587,495,431	\$514,089,000	\$576,099,735
Fruits	\$1,104,831,800	\$1,293,461,619	\$890,891,000	\$1,014,709,749	\$1,003,708,000	\$1,124,777,836
Industrial & Wood	\$165,000	\$193,171	\$2,129,000	\$2,424,895	\$5,600,000	\$6,275,486
Livestock & Poultry	\$593,948,000	\$695,353,756	\$537,148,000	\$611,802,468	\$463,635,000	\$519,559,844
Livestock & Poultry Products	\$207,036,000	\$242,383,610	\$268,185,000	\$305,458,170	\$226,798,000	\$254,154,957
Nursery	\$28,904,600	\$33,839,532	\$32,013,900	\$36,463,289	\$32,406,600	\$36,315,567
Seed Crops	\$35,068,000	\$41,055,220	\$42,880,000	\$48,839,593	\$61,005,000	\$68,363,580
Tree Nuts	\$139,901,000	\$163,786,537	\$178,340,000	\$203,126,237	\$231,718,000	\$259,668,420
Vegetables	\$791,607,000	\$926,759,414	\$737,992,000	\$840,560,380	\$865,452,000	\$969,845,043
Total	\$3,418,622,400	\$4,002,289,638	\$3,215,184,800	\$3,662,040,993	\$3,415,591,000	\$3,827,588,358

Table 1. Values for Main Crop Types (2000 – 2002) (Contd.)

Kern County (Value by Year)	2000		2001		2002	
	2000 Nominal Value	2006 Constant Dollars	2001 Nominal Value	2006 Constant Dollars	2002 Nominal Value	2006 Constant Dollars
Apiary	\$11,734,000	\$13,737,366	\$16,293,000	\$18,557,451	\$14,483,000	\$16,229,977
Aquaculture	\$0	\$0	\$0	\$0	\$0	\$0
Field Crops	\$415,053,000	\$485,915,707	\$428,252,000	\$487,771,770	\$376,894,000	\$422,355,922
Fruits	\$815,017,000	\$954,166,244	\$787,156,000	\$896,557,342	\$849,110,000	\$951,531,829
Industrial & Wood	\$11,337,000	\$13,272,585	\$11,584,000	\$13,193,980	\$12,431,000	\$13,930,459
Livestock & Poultry	\$69,688,000	\$81,585,951	\$67,495,000	\$76,875,661	\$68,100,000	\$76,314,397
Livestock & Poultry Products	\$170,876,000	\$200,049,951	\$220,657,000	\$251,324,583	\$206,632,000	\$231,556,482
Nursery	\$106,246,000	\$124,385,561	\$114,598,600	\$130,525,863	\$115,383,000	\$129,300,794
Seed Crops	\$7,246,000	\$8,483,122	\$6,992,000	\$7,963,769	\$5,378,000	\$6,026,708
Tree Nuts	\$267,158,000	\$312,770,341	\$248,411,000	\$282,935,919	\$385,606,000	\$432,118,786
Vegetables	\$334,186,100	\$391,242,263	\$352,867,600	\$401,910,216	\$552,229,500	\$618,840,840
Total	\$2,208,541,100	\$2,585,609,092	\$2,254,306,200	\$2,567,616,554	\$2,586,246,500	\$2,898,206,194

Table 1. Values for Main Crop Types (2000 – 2002) (Contd.)

Kings County (Value by Year)	2000		2001		2002	
	2000 Nominal Value	2006 Constant Dollars	2001 Nominal Value	2006 Constant Dollars	2002 Nominal Value	2006 Constant Dollars
Apiary	\$2,647,000	\$3,098,927	\$2,004,000	\$2,282,522	\$2,531,000	\$2,836,296
Aquaculture	\$0	\$0	\$0	\$0	\$0	\$0
Field Crops	\$332,855,000	\$389,683,902	\$308,302,000	\$351,150,753	\$326,741,000	\$366,153,338
Fruits	\$56,094,000	\$65,671,024	\$51,702,000	\$58,887,702	\$85,778,000	\$96,124,763
Industrial & Wood	\$127,000	\$148,683	\$143,000	\$162,875	\$201,000	\$225,245
Livestock & Poultry	\$106,229,000	\$124,365,659	\$115,369,000	\$131,403,336	\$104,201,000	\$116,769,992
Livestock & Poultry Products	\$298,609,000	\$349,591,024	\$367,657,000	\$418,755,092	\$309,252,000	\$346,554,770
Nursery	\$0	\$0	\$0	\$0	\$0	\$0
Seed Crops	\$18,412,000	\$21,555,512	\$5,389,000	\$6,137,980	\$5,617,000	\$6,294,537
Tree Nuts	\$26,091,000	\$30,545,561	\$37,718,000	\$42,960,163	\$59,645,000	\$66,839,533
Vegetables	\$43,998,000	\$51,509,854	\$63,666,000	\$72,514,495	\$129,841,000	\$145,502,755
Total	\$885,062,000	\$1,036,170,146	\$951,950,000	\$1,084,254,915	\$1,023,807,000	\$1,147,301,229

Table 1. Values for Main Crop Types (2000 – 2002) (Contd.)

Madera County (Value by Year)	2000		2001		2002	
	2000 Nominal	2006 Constant	2001 Nominal	2006 Constant	2002 Nominal	2006 Constant
	Apiary	\$5,735,000	\$6,714,146	\$5,794,000	\$6,599,268	\$7,724,000
Aquaculture	\$0	\$0	\$0	\$0	\$0	\$0
Field Crops	\$78,183,000	\$91,531,317	\$88,779,000	\$101,117,776	\$81,070,000	\$90,848,872
Fruits	\$291,115,000	\$340,817,561	\$177,769,000	\$202,475,878	\$214,782,000	\$240,689,556
Industrial & Wood	\$778,000	\$910,829	\$978,000	\$1,113,925	\$1,059,000	\$1,186,739
Livestock & Poultry	\$79,706,000	\$93,314,341	\$82,503,000	\$93,969,519	\$91,776,000	\$102,846,257
Livestock & Poultry Products	\$102,144,000	\$119,583,219	\$133,800,000	\$152,395,932	\$119,622,000	\$134,051,113
Nursery	\$37,500,000	\$43,902,439	\$24,543,300	\$27,954,403	\$18,271,000	\$20,474,895
Seed Crops	\$0	\$0	\$0	\$0	\$0	\$0
Tree Nuts	\$137,638,000	\$161,137,171	\$122,673,000	\$139,722,468	\$218,318,000	\$244,652,078
Vegetables	\$15,400,000	\$18,029,268	\$13,602,000	\$15,492,447	\$25,763,000	\$28,870,599
Total	\$748,199,000	\$875,940,292	\$650,441,300	\$740,841,616	\$778,385,000	\$872,275,798

Table 1. Values for Main Crop Types (2000 – 2002) (Contd.)

Merced County (Value by Year)	2000		2001		2002	
	2000 Nominal Value	2006 Constant Dollars	2001 Nominal Value	2006 Constant Dollars	2002 Nominal Value	2006 Constant Dollars
Apiary	\$9,834,000	\$11,512,976	\$10,351,000	\$11,789,614	\$12,696,000	\$14,227,424
Aquaculture	\$3,814,000	\$4,465,171	\$2,974,000	\$3,387,336	\$3,060,000	\$3,429,105
Field Crops	\$230,750,000	\$270,146,341	\$251,202,000	\$286,114,820	\$257,392,000	\$288,439,284
Fruits	\$95,270,000	\$111,535,610	\$84,064,000	\$95,747,471	\$88,235,000	\$98,878,132
Industrial & Wood	\$2,213,000	\$2,590,829	\$3,770,000	\$4,293,966	\$3,925,000	\$4,398,444
Livestock & Poultry	\$316,098,000	\$370,065,951	\$352,817,000	\$401,852,583	\$384,997,000	\$431,436,327
Livestock & Poultry Products	\$532,620,600	\$623,555,824	\$664,521,000	\$756,878,156	\$563,727,000	\$631,725,198
Nursery	\$21,758,000	\$25,472,780	\$22,233,000	\$25,323,010	\$21,991,000	\$24,643,611
Seed Crops	\$1,689,000	\$1,977,366	\$1,963,000	\$2,235,824	\$937,000	\$1,050,023
Tree Nuts	\$118,039,000	\$138,192,000	\$142,941,000	\$162,807,376	\$207,829,000	\$232,897,868
Vegetables	\$206,452,000	\$241,699,902	\$166,203,000	\$189,302,400	\$185,931,000	\$208,358,475
Total	\$1,538,537,600	\$1,801,214,751	\$1,703,039,000	\$1,939,732,556	\$1,730,720,000	\$1,939,483,891

Table 1. Values for Main Crop Types (2000 – 2002) (Contd.)

Tulare County (Value by Year)	2000			2001			2002		
	2000 Nominal Value	2006 Constant Dollars	2001 Nominal Value	2006 Constant Dollars	2002 Nominal Value	2006 Constant Dollars	2002 Nominal Value	2006 Constant Dollars	
Apiary	\$13,443,000	\$15,738,146	\$17,825,000	\$20,302,373	\$28,711,000	\$32,174,195	\$28,711,000	\$32,174,195	
Aquaculture	\$0	\$0	\$0	\$0	\$0	\$0	\$0	\$0	
Field Crops	\$282,041,500	\$330,194,927	\$301,079,000	\$342,923,878	\$299,841,000	\$336,008,591	\$299,841,000	\$336,008,591	
Fruits	\$1,241,945,000	\$1,453,984,390	\$1,268,586,000	\$1,444,897,953	\$1,252,159,900	\$1,403,198,643	\$1,252,159,900	\$1,403,198,643	
Industrial & Wood	\$1,774,000	\$2,076,878	\$1,403,000	\$1,597,993	\$1,253,000	\$1,404,140	\$1,253,000	\$1,404,140	
Livestock & Poultry	\$452,113,000	\$529,303,024	\$515,928,000	\$587,633,248	\$430,272,000	\$482,172,514	\$430,272,000	\$482,172,514	
Livestock & Poultry Products	\$871,695,000	\$1,020,520,975	\$1,167,996,000	\$1,330,327,648	\$977,879,000	\$1,095,833,276	\$977,879,000	\$1,095,833,276	
Nursery	\$72,730,000	\$85,147,317	\$65,175,000	\$74,233,220	\$70,463,000	\$78,962,428	\$70,463,000	\$78,962,428	
Seed Crops	\$974,700	\$1,141,112	\$561,600	\$639,653	\$1,135,000	\$1,271,907	\$1,135,000	\$1,271,907	
Tree Nuts	\$94,339,000	\$110,445,659	\$101,702,000	\$115,836,854	\$110,233,000	\$123,529,588	\$110,233,000	\$123,529,588	
Vegetables	\$35,478,000	\$41,535,220	\$52,221,000	\$59,478,834	\$28,605,000	\$32,055,409	\$28,605,000	\$32,055,409	
Total	\$3,066,533,200	\$3,590,087,648	\$3,492,476,600	\$3,977,871,653	\$3,200,551,900	\$3,586,610,689	\$3,200,551,900	\$3,586,610,689	

Table 2. Values for Main Crop Types (2003 – 2006)

Crop Category	Fresno County (Value by Year)							
	2003		2004		2005		2006	
	2003 Nominal Value	2006 Constant Dollars	2004 Nominal Value	2006 Constant Dollars	2005 Nominal Value	2006 Constant Dollars	2006 Nominal Value	Average in 2006 Constant Dollars
Apiary	\$11,063,800	\$12,122,077	\$11,603,200	\$12,383,299	\$15,924,200	\$16,437,884	\$29,492,100	\$14,986,471
Aquaculture	\$0	\$0	\$0	\$0	\$0	\$0	\$0	\$0
Field Crops	\$499,694,000	\$547,490,817	\$575,381,000	\$614,064,635	\$453,970,000	\$468,614,194	\$417,012,000	\$543,636,046
Fruits	\$1,222,687,000	\$1,339,639,670	\$1,293,852,000	\$1,380,839,402	\$1,341,217,000	\$1,384,482,065	\$1,404,744,000	\$1,277,522,049
Industrial & Wood	\$2,761,000	\$3,025,096	\$3,619,000	\$3,862,310	\$3,619,000	\$3,735,742	\$1,843,000	\$3,051,386
Livestock & Poultry	\$526,191,000	\$576,522,313	\$369,453,000	\$394,291,820	\$375,430,000	\$387,540,645	\$384,371,000	\$509,920,264
Livestock & Poultry Products	\$242,484,000	\$265,678,122	\$337,840,000	\$360,553,436	\$355,520,000	\$366,988,387	\$318,128,000	\$301,906,383
Nursery	\$32,724,700	\$35,854,889	\$14,382,000	\$15,348,921	\$38,091,000	\$39,319,742	\$31,110,000	\$32,607,420
Seed Crops	\$37,423,000	\$41,002,591	\$18,972,000	\$20,247,513	\$19,429,000	\$20,055,742	\$25,162,000	\$37,818,034
Tree Nuts	\$224,594,000	\$246,076,904	\$465,661,000	\$496,968,013	\$612,279,000	\$632,029,936	\$604,497,000	\$372,307,578
Vegetables	\$1,253,144,000	\$1,373,009,948	\$1,223,398,000	\$1,305,648,686	\$1,069,505,000	\$1,104,005,162	\$1,169,452,000	\$1,098,468,662
Total	\$4,052,766,500	\$4,440,422,426	\$4,314,161,200	\$4,604,208,034	\$4,284,984,200	\$4,423,209,499	\$4,385,811,100	\$4,192,224,293

Table 2. Values for Main Crop Types (2003– 2006)

Kern County (Value by Year)	2003		2004		2005		2006	
	2003 Nominal Value	2006 Constant Dollars	2004 Nominal Value	2006 Constant Dollars	2005 Nominal Value	2006 Constant Dollars	2006 Nominal Value	Average in 2006 Constant Dollars
Apiary	\$17,018,000	\$18,645,809	\$14,460,000	\$15,432,165	\$18,901,000	\$19,510,710	\$34,119,000	\$19,461,782
Aquaculture	\$0	\$0	\$0	\$0	\$0	\$0	\$0	\$0
Field Crops	\$386,928,000	\$423,938,504	\$509,180,000	\$543,412,853	\$407,377,000	\$420,518,194	\$392,345,000	\$453,751,136
Fruits	\$770,385,000	\$844,074,000	\$837,671,000	\$893,988,743	\$964,239,000	\$995,343,484	\$951,455,000	\$926,730,949
Industrial & Wood	\$7,527,000	\$8,246,974	\$4,810,000	\$5,133,383	\$2,271,000	\$2,344,258	\$2,791,000	\$8,416,091
Livestock & Poultry	\$81,240,000	\$89,010,783	\$103,436,000	\$110,390,141	\$212,346,000	\$219,195,871	\$215,277,000	\$124,092,829
Livestock & Poultry Products	\$256,764,000	\$281,324,035	\$405,487,000	\$432,748,434	\$441,253,000	\$455,486,968	\$426,099,000	\$325,512,779
Nursery	\$100,702,000	\$110,334,365	\$101,850,000	\$108,697,512	\$105,728,000	\$109,138,581	\$109,329,500	\$117,387,454
Seed Crops	\$9,024,000	\$9,887,165	\$12,598,000	\$13,444,980	\$2,490,000	\$2,570,323	\$5,701,000	\$7,725,295
Tree Nuts	\$345,578,000	\$378,633,287	\$661,317,000	\$705,778,227	\$912,794,000	\$942,238,968	\$656,302,000	\$530,111,076
Vegetables	\$502,360,000	\$550,411,826	\$221,025,400	\$235,885,234	\$179,618,000	\$185,412,129	\$194,866,000	\$368,366,930
Total	\$2,477,526,000	\$2,714,506,748	\$2,871,834,400	\$3,064,911,672	\$3,247,017,000	\$3,351,759,485	\$2,988,284,500	\$2,881,556,321

Table 2. Values for Main Crop Types (2003– 2006) (Contd.)

Kings County (Value by Year)	2003		2004		2005		2006	
	2003 Nominal Value	2006 Constant Dollars	2004 Nominal Value	2006 Constant Dollars	2005 Nominal Value	2006 Constant Dollars	2006 Nominal Value	Average in 2006 Constant Dollars
Apiary	\$3,026,000	\$3,315,443	\$2,518,000	\$2,687,289	\$2,994,000	\$3,090,581	\$5,415,000	\$3,246,580
Aquaculture	\$0	\$0	\$0	\$0	\$0	\$0	\$0	\$0
Field Crops	\$313,559,000	\$343,551,600	\$379,551,000	\$405,068,722	\$381,789,000	\$394,104,774	\$364,106,000	\$373,402,727
Fruits	\$77,641,000	\$85,067,530	\$97,281,000	\$103,821,332	\$104,831,000	\$108,212,645	\$131,731,000	\$92,787,999
Industrial & Wood	\$184,000	\$201,600	\$183,000	\$195,303	\$168,000	\$173,419	\$168,000	\$182,161
Livestock & Poultry	\$163,217,000	\$178,829,061	\$173,532,000	\$185,198,789	\$202,234,000	\$208,757,678	\$161,497,000	\$158,117,359
Livestock & Poultry Products	\$331,393,000	\$363,091,461	\$459,386,000	\$490,271,136	\$462,989,300	\$477,924,439	\$417,994,000	\$409,168,846
Nursery	\$0	\$0	\$0	\$0	\$0	\$0	\$0	\$0
Seed Crops	\$2,581,000	\$2,827,878	\$7,112,000	\$7,590,149	\$8,340,000	\$8,609,032	\$12,962,000	\$9,425,298
Tree Nuts	\$74,444,000	\$81,564,730	\$75,328,000	\$80,392,402	\$140,366,000	\$144,893,936	\$120,448,000	\$81,092,046
Vegetables	\$170,921,000	\$187,269,965	\$97,199,000	\$103,733,819	\$103,380,000	\$106,714,839	\$74,865,000	\$106,015,818
Total	\$1,136,966,000	\$1,245,719,270	\$1,292,090,000	\$1,378,958,941	\$1,407,091,300	\$1,452,481,343	\$1,289,186,000	\$1,233,438,835

Table 2. Values for Main Crop Types (2003– 2006) (Contd.)

Madera County (Value by Year)	2003		2004		2005		2006	
	2003 Nominal Value	2006 Constant Dollars	2004 Nominal Value	2006 Constant Dollars	2005 Nominal Value	2006 Constant Dollars	2006 Nominal Value	Average in 2006 Constant Dollars
Apiary	\$8,636,000	\$9,462,052	\$7,528,000	\$8,034,118	\$11,068,000	\$11,425,032	\$20,598,000	\$10,212,615
Aquaculture	\$0	\$0	\$0	\$0	\$0	\$0	\$0	\$0
Field Crops	\$78,374,000	\$85,870,643	\$87,406,000	\$93,282,422	\$89,032,000	\$91,904,000	\$81,620,000	\$90,882,147
Fruits	\$197,644,000	\$216,549,078	\$257,919,000	\$275,259,240	\$283,420,000	\$292,562,581	\$210,274,000	\$254,089,699
Industrial & Wood	\$951,000	\$1,041,965	\$900,000	\$960,508	\$934,000	\$964,129	\$1,091,000	\$1,038,442
Livestock & Poultry	\$98,335,000	\$107,740,957	\$91,026,000	\$97,145,800	\$106,939,000	\$110,388,645	\$101,635,000	\$101,005,788
Livestock & Poultry Products	\$141,081,000	\$154,575,704	\$209,772,000	\$223,875,252	\$210,024,000	\$216,798,968	\$182,777,000	\$169,151,027
Nursery	\$20,660,000	\$22,636,174	\$30,861,000	\$32,935,826	\$34,585,000	\$35,700,645	\$33,718,000	\$31,046,055
Seed Crops	\$0	\$0	\$0	\$0	\$0	\$0	\$0	\$0
Tree Nuts	\$196,248,000	\$215,019,548	\$360,095,000	\$384,304,669	\$348,009,000	\$359,235,097	\$379,830,000	\$269,128,719
Vegetables	\$18,317,000	\$20,069,061	\$24,444,000	\$26,087,403	\$21,033,000	\$21,711,484	\$20,957,000	\$21,602,466
Total	\$760,246,000	\$832,965,183	\$1,069,951,000	\$1,141,885,238	\$1,105,044,000	\$1,140,690,581	\$1,032,500,000	\$948,156,958

Table 2. Values for Main Crop Types (2003 – 2006) (Contd.)

Merced County (Value by Year)	2003		2004		2005		2006	
	2003 Nominal Value	2006 Constant Dollars	2004 Nominal Value	2006 Constant Dollars	2005 Nominal Value	2006 Constant Dollars	2006 Nominal Value	Average in 2006 Constant Dollars
Apiary	\$14,187,000	\$15,544,017	\$11,880,000	\$12,678,708	\$14,704,000	\$15,178,323	\$21,359,000	\$14,612,866
Aquaculture	\$2,405,000	\$2,635,043	\$2,778,000	\$2,964,769	\$2,327,000	\$2,402,065	\$3,031,000	\$3,187,784
Field Crops	\$252,344,000	\$276,481,252	\$285,104,000	\$304,271,924	\$287,500,000	\$296,774,194	\$266,770,000	\$284,142,545
Fruits	\$77,138,000	\$84,516,417	\$56,844,000	\$60,665,698	\$73,397,000	\$75,764,645	\$59,460,000	\$83,795,425
Industrial & Wood	\$3,974,000	\$4,354,122	\$5,223,000	\$5,574,149	\$4,863,000	\$5,019,871	\$5,940,000	\$4,595,912
Livestock & Poultry	\$454,542,000	\$498,019,930	\$564,457,000	\$602,406,200	\$620,723,000	\$640,746,323	\$584,770,000	\$504,185,331
Livestock & Poultry Products	\$612,744,000	\$671,354,296	\$817,349,000	\$872,300,468	\$793,537,000	\$819,134,968	\$712,554,000	\$726,786,130
Nursery	\$30,404,000	\$33,312,209	\$0	\$0	\$33,329,000	\$34,404,129	\$35,421,000	\$25,510,963
Seed Crops	\$1,283,000	\$1,405,722	\$873,000	\$931,693	\$3,319,000	\$3,426,065	\$875,000	\$1,700,242
Tree Nuts	\$235,052,000	\$257,535,235	\$355,665,000	\$379,576,834	\$325,318,000	\$335,812,129	\$317,287,000	\$260,586,920
Vegetables	\$234,157,000	\$256,554,626	\$201,477,000	\$215,022,568	\$193,672,000	\$199,919,484	\$239,992,000	\$221,549,922
Total	\$1,918,230,000	\$2,101,712,870	\$2,301,650,000	\$2,456,393,011	\$2,352,689,000	\$2,428,582,195	\$2,247,459,000	\$2,130,654,039

Table 2. Values for Main Crop Types (2003– 2006) (Contd.)

Tulare County (Value by Year)	2003		2004		2005		2006	
	2003 Nominal Value	2006 Constant Dollars	2004 Nominal Value	2006 Constant Dollars	2005 Nominal Value	2006 Constant Dollars	2006 Nominal Value	Average in 2006 Constant Dollars
Apiary	\$34,589,000	\$37,897,513	\$28,063,000	\$29,949,713	\$25,420,000	\$26,240,000	\$31,883,000	\$27,740,706
Aquaculture	\$0	\$0	\$0	\$0	\$0	\$0	\$0	\$0
Field Crops	\$290,115,000	\$317,865,130	\$420,701,000	\$448,985,292	\$394,657,000	\$407,387,871	\$349,313,700	\$361,811,341
Fruits	\$1,215,620,000	\$1,331,896,696	\$1,362,912,000	\$1,454,542,399	\$1,440,566,800	\$1,487,036,697	\$1,321,740,000	\$1,413,899,540
Industrial & Wood	\$600,000	\$657,391	\$998,000	\$1,065,097	\$1,185,000	\$1,223,226	\$0	\$1,146,389
Livestock & Poultry	\$440,950,000	\$483,127,826	\$508,983,000	\$543,202,609	\$550,067,000	\$567,811,097	\$530,380,000	\$531,947,188
Livestock & Poultry Products	\$1,082,556,000	\$1,186,104,835	\$1,378,966,000	\$1,471,675,731	\$1,478,767,000	\$1,526,469,162	\$1,182,201,000	\$1,259,018,947
Nursery	\$66,775,000	\$73,162,174	\$69,423,000	\$74,090,401	\$82,260,000	\$84,913,548	\$84,068,000	\$79,225,298
Seed Crops	\$1,076,000	\$1,178,922	\$2,355,000	\$2,513,330	\$902,000	\$931,097	\$1,474,000	\$1,307,146
Tree Nuts	\$140,167,000	\$153,574,278	\$227,698,000	\$243,006,441	\$286,586,000	\$295,830,710	\$257,978,000	\$185,743,076
Vegetables	\$22,212,000	\$24,336,626	\$37,252,000	\$39,756,502	\$14,359,700	\$14,822,916	\$6,396,000	\$31,197,358
Total	\$3,294,660,000	\$3,609,801,392	\$4,037,351,000	\$4,308,787,514	\$4,274,770,500	\$4,412,666,325	\$3,765,433,700	\$3,893,036,989

Appendix P

Land Use

Draft

Program Environmental Impact Statement/Report

SAN JOAQUIN RIVER
RESTORATION PROGRAM



Table of Contents

1.0 Introduction..... 1-1

Attachments

- Land Use Designations
- Williamson Act Lands
- Important Farmland
- Land Use Borrow Area Checklist

List of Abbreviations and Acronyms

CEQA	California Environmental Act
NEPA	National Environmental Policy Act
PEIS/R	Program Environmental Impact Statement/Report
SJRRP	San Joaquin River Restoration Program

1 **1.0 Introduction**

2 This appendix to the San Joaquin River Restoration Program (SJRRP) Program
3 Environmental Impact Statement/Report (PEIS/R) provides supplemental information on
4 land use within the study area. This appendix includes the following attachments:

- 5 • **Attachment** – Land Use Borrow Area Checklist
- 6 • **Attachment** – Land Use Designations
- 7 • **Attachment** – Williamson Act Lands
- 8 • **Attachment** – Important Farmland

1

2

This page left blank intentionally.

Attachment

Land Use Borrow Area Checklist

Draft

Land Use Appendix

SAN JOAQUIN RIVER
RESTORATION PROGRAM

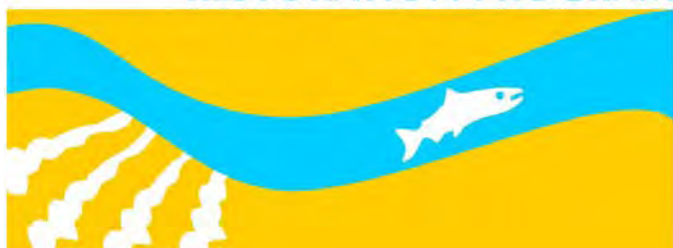


Table of Contents

1.0 Borrow Checklist for CEQA and NEPA Compliance..... 1-1

Tables

Table 1-1. Borrow Site CEQA/NEPA Checklist..... 1-3
Table 1-2. Checklist Summary 1-4

List of Abbreviations and Acronyms

CEQA	California Environmental Quality Act
DWR	California Department of Water Resources
EIR	Environmental Impact Report
EIS	Environmental Impact Statement
EIS/R	Environmental Impact Statement/Report
MND	Mitigated Negative Declaration
NEPA	National Environmental Policy Act
PEIS/R	Program Environmental Impact Statement/Report
Reclamation	U.S. Department of the Interior, Bureau of Reclamation
SJRRP	San Joaquin River Restoration Program
SMARA	California Surface Mining and Reclamation Act

1.0 Borrow Checklist for CEQA and NEPA Compliance

As identified in Chapter 28, “Consultation, Coordination, and Compliance,” and Chapter 16.0, “Land Use Planning and Agricultural Resources,” future San Joaquin River Restoration Program (SJRRP) actions will require the excavation of borrow. Borrow excavation is regulated as surface mining under the California Surface Mining and Reclamation Act (SMARA) (California Public Resources Code Section 2710 et seq.). The approval of a use permit, reclamation plan, and financial assurance mechanism by a SMARA lead agency requires the agency to satisfy the requirements of the California Environmental Quality Act (CEQA). In addition, because borrow removal is also part of a Federal action, the appropriate vehicle for satisfying the National Environmental Policy Act (NEPA) for borrow activity must be identified. This appendix reviews the standards that apply to preparation of NEPA and/or CEQA documents. The checklist at the end of this document (Table 1-1) provides the U.S. Department of the Interior, Bureau of Reclamation (Reclamation), California Department of Water Resources (DWR), and the SMARA lead agencies with a tool for determining whether subsequent removal of borrow for actions identified in this Program Environmental Impact Statement/Report (PEIS/R) as part of the SJRRP will require further environmental documentation under either NEPA or CEQA, and if so, the appropriate level of documentation for satisfying NEPA and/or CEQA.

Reclamation and DWR have developed this checklist as a tool to maximize flexibility for screening and selecting specific borrow sites when planning future SJRRP actions that require borrow material. To the extent possible, this PEIS/R identifies impacts associated with future borrow activity. However, insufficient information is available to allow identification of specific borrow locations at this time; therefore, it may not be possible to identify all impacts associated with future borrow activity by the SJRRP. Accordingly, this checklist will be used to help Reclamation, DWR, and the SMARA lead agencies to determine whether impacts associated with future borrow activities have been analyzed at a sufficient level in this PEIS/R, or whether further environmental review is required. If further environmental review and analysis is required, this checklist will help guide Reclamation, DWR, and the SMARA lead agencies in determining the appropriate document for NEPA and/or CEQA compliance.

The checklist in Table 1-1 will be used to review impacts associated with future borrow sites once they are proposed for use, to determine whether additional NEPA and CEQA environmental review is required and the type of review. The checklist involves a three-step process for determining whether a specific borrow site has been sufficiently analyzed, or whether use of the borrow site would require preparation of a new environmental compliance document.

1 First, Reclamation and DWR will review impacts that were identified as “less than
2 significant” in the checklist and will fill out the checklist accordingly. If using the borrow
3 site would contribute to these impacts, Reclamation and DWR will determine whether the
4 contribution of borrow site operations would result in a significant impact. If a new
5 significant impact would result, a supplemental or subsequent environmental impact
6 statement/report (EIS/R) will be required and prepared.

7 Next, for impacts that the checklist shows were previously analyzed and disclosed as
8 “significant,” and for which Reclamation and DWR identified and adopted mitigation
9 measures that would reduce the impacts to less-than-significant levels, Reclamation and
10 DWR will determine whether the borrow site operations would contribute to those
11 impacts. If the borrow site operations would contribute to those impacts, but
12 implementation of the mitigation measures and environmental commitments identified in
13 this PEIS/R – which were previously adopted and incorporated into the SJRRP – would
14 mitigate that contribution to a less-than-significant level, the borrow site’s contribution to
15 those impacts will not trigger the need to prepare a new NEPA or CEQA compliance
16 document. If using the borrow site would cause these impacts to become significant
17 impacts even after implementation of identified mitigation, Reclamation and DWR will
18 prepare the appropriate NEPA/CEQA compliance documents, as described above.

19 Reclamation and DWR will also use the checklist to determine whether the borrow site
20 operations would contribute to identified significant and unavoidable impacts. If the
21 borrow site operations would cause or contribute to any of the previously analyzed and
22 disclosed significant or potentially significant and unavoidable impacts, DWR will
23 determine whether the borrow site’s contribution was included when calculating the
24 severity of the impact. If the borrow site’s contribution to that impact was included in the
25 impacts analyzed in this PEIS/R, no new NEPA or CEQA compliance document will be
26 required. If the borrow site’s contribution was not included in the impacts analyzed in
27 this document, a new environmental impact statement (EIS), supplemental EIS,
28 environmental impact report (EIR), or EIR addendum, or potentially a Mitigated
29 Negative Declaration (MND) will be required and prepared.

30 Finally, Reclamation and DWR will use the checklist to determine whether using the
31 borrow site would result in new impacts that were not previously disclosed in this PEIS/R
32 or would affect resources that were not identified when analyzing previously disclosed
33 impacts. If so, Reclamation and DWR will prepare the appropriate NEPA or CEQA
34 compliance documents, as described above.

35 The checklist in Table 1-1 for analyzing the consistency of future borrow activity with
36 impacts identified in this PEIS/R is summarized in Table 1-2. Table 1-1 identifies impact
37 topics relevant to SJRRP actions. On receipt of comments and during preparation of the
38 final PEIS/R, this table will be populated with the relevant impacts and significance
39 thresholds for screening of future borrow activity by the SJRRP.

1
2

**Table 1-1.
Borrow Site CEQA/NEPA Checklist**

Issue Area	Impact	Significance Conclusion
Surface Water Supplies and Facilities Operations		
Surface Water Quality		
Flood Management		
Groundwater		
Fisheries		
Vegetation and Wildlife		
Geology and Soils		
Paleontological Resources		
Cultural Resources		
Indian Trust Assets		
Land Use Planning and Agricultural Resources		
Recreation		
Power and Energy		
Visual Resources		
Utilities and Service Systems		
Public Health and Hazardous Materials		
Transportation and Infrastructure		
Air Quality		
Noise		
Climate Change		
Socioeconomics		
Environmental Justice		

Key:
CEQA = California Environmental Quality Act
NEPA = National Environmental Policy Act

3

1
2

**Table 1-2.
Checklist Summary**

Do new significant impacts exist in addition to those discussed above? If yes, describe using an attachment to the checklist.	Yes <input type="checkbox"/> No <input type="checkbox"/>
Are any of the significant impacts discussed above substantially more severe than discussed in the PEIS/R? If yes, explain in an attachment to the checklist.	Yes <input type="checkbox"/> No <input type="checkbox"/>
Do additional mitigation measures or alternatives exist? Are they feasible or considerably different from the previously adopted mitigation measures? If yes, explain on an attachment to the checklist.	Yes <input type="checkbox"/> No <input type="checkbox"/>
Is additional environmental documentation required? If yes, specify type of environmental compliance document required: <ul style="list-style-type: none"> • EIR addendum • Mitigated negative declaration • Supplemental EIR • Subsequent EIR • Supplemental EIS 	Yes <input type="checkbox"/> No <input type="checkbox"/> Yes <input type="checkbox"/> No <input type="checkbox"/> Yes <input type="checkbox"/> No <input type="checkbox"/> Yes <input type="checkbox"/> No <input type="checkbox"/> Yes <input type="checkbox"/> No <input type="checkbox"/>

Key:
 EIR = Environmental Impact Report
 EIS = Environmental Impact Statement
 PEIS/R = Program Environmental Impact Statement/Report

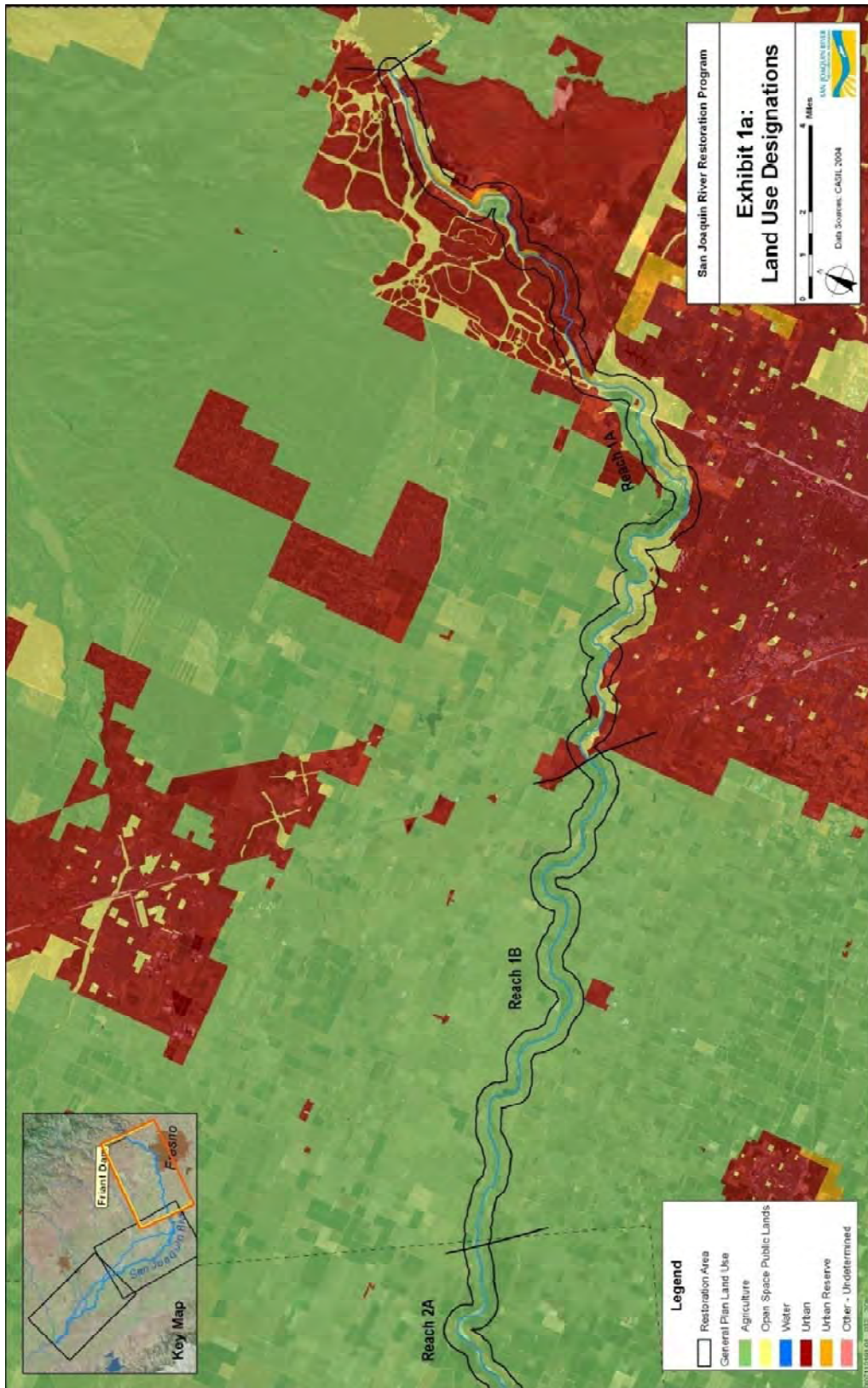
3

Attachment

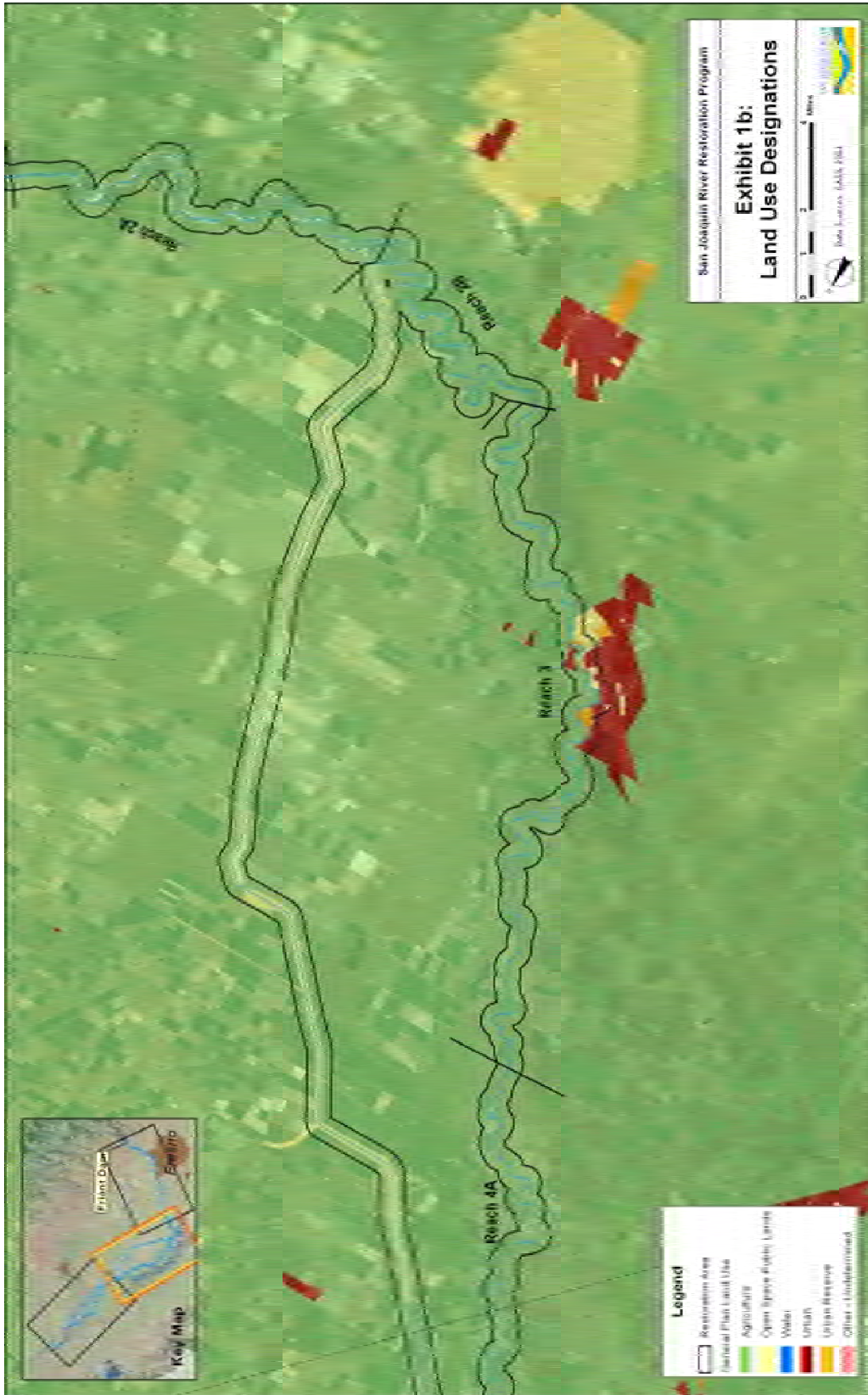
Land Use Designations

**Draft
Land Use Appendix**

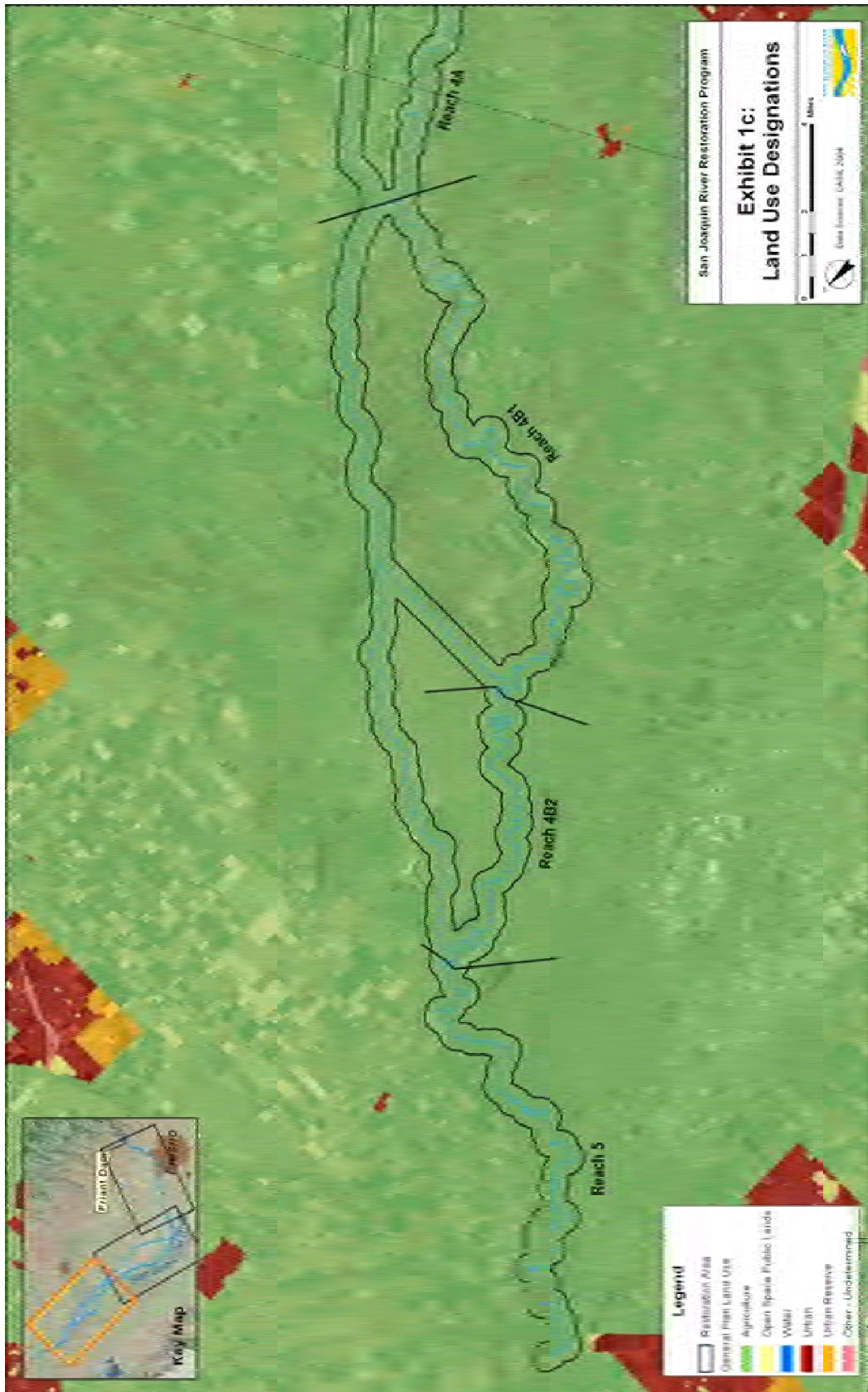




This page left blank intentionally.



This Page Left Blank Intentionally



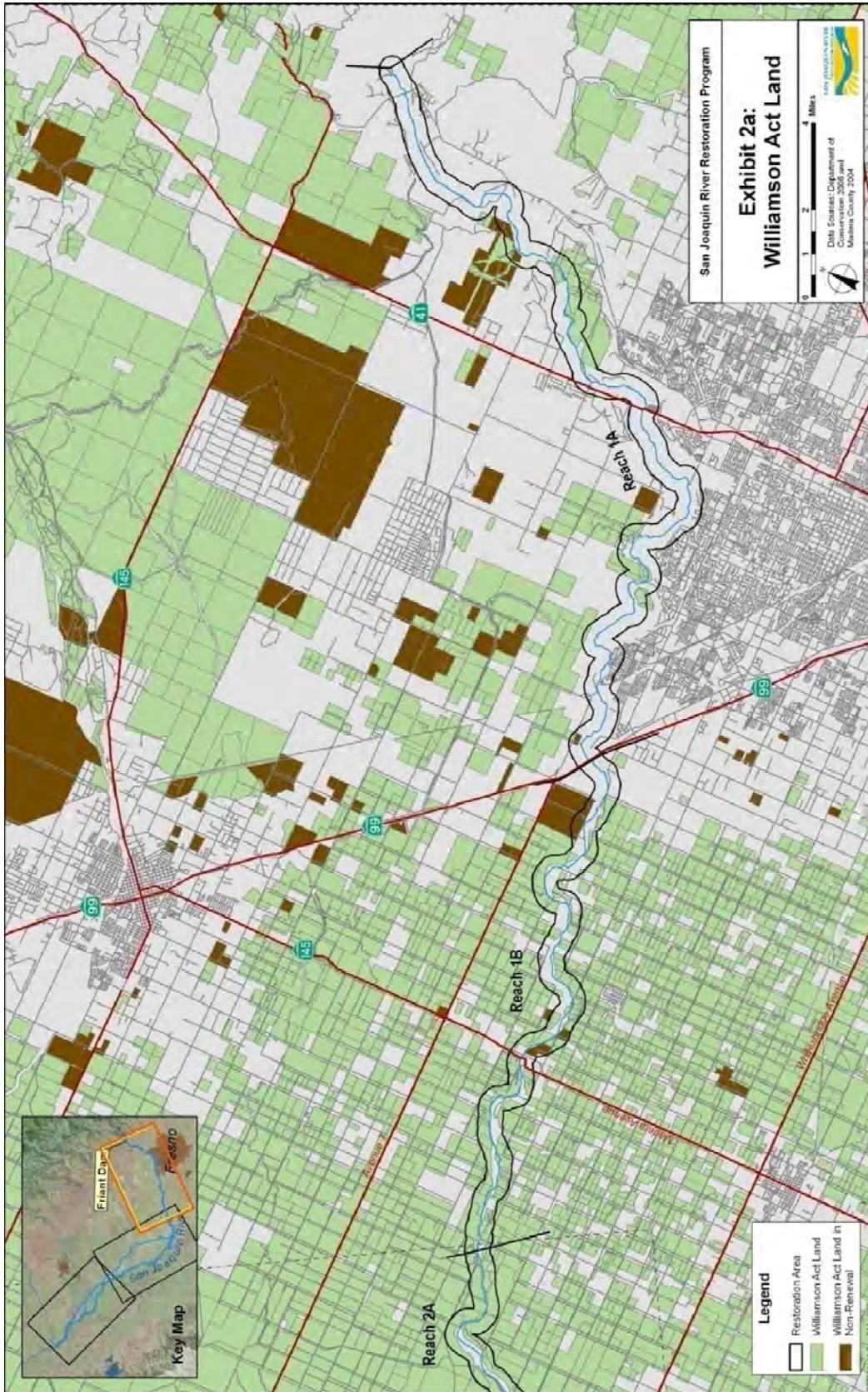
This Page Left Blank Intentionally

Attachment

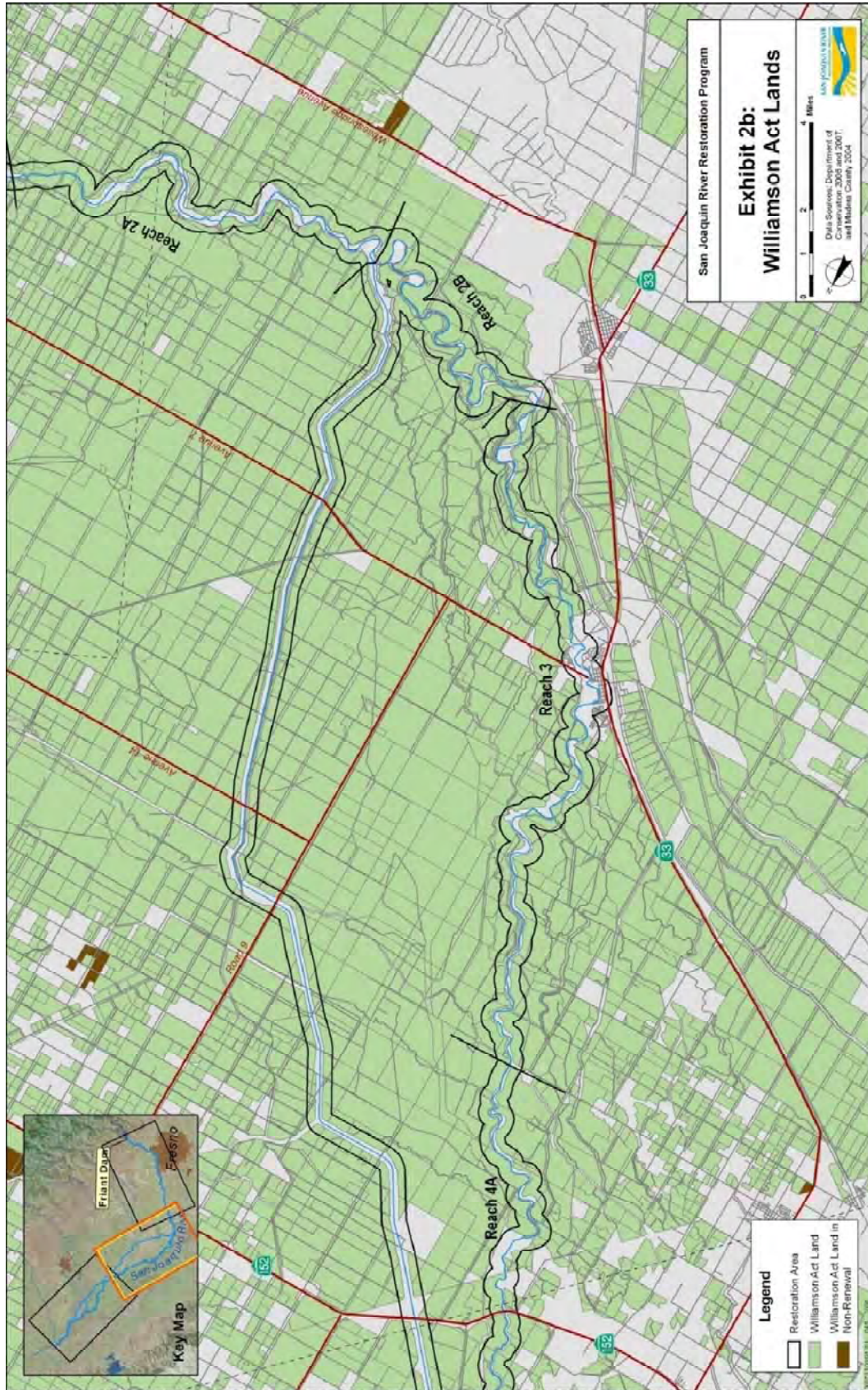
Williamson Act Lands

**Draft
Land Use Appendix**

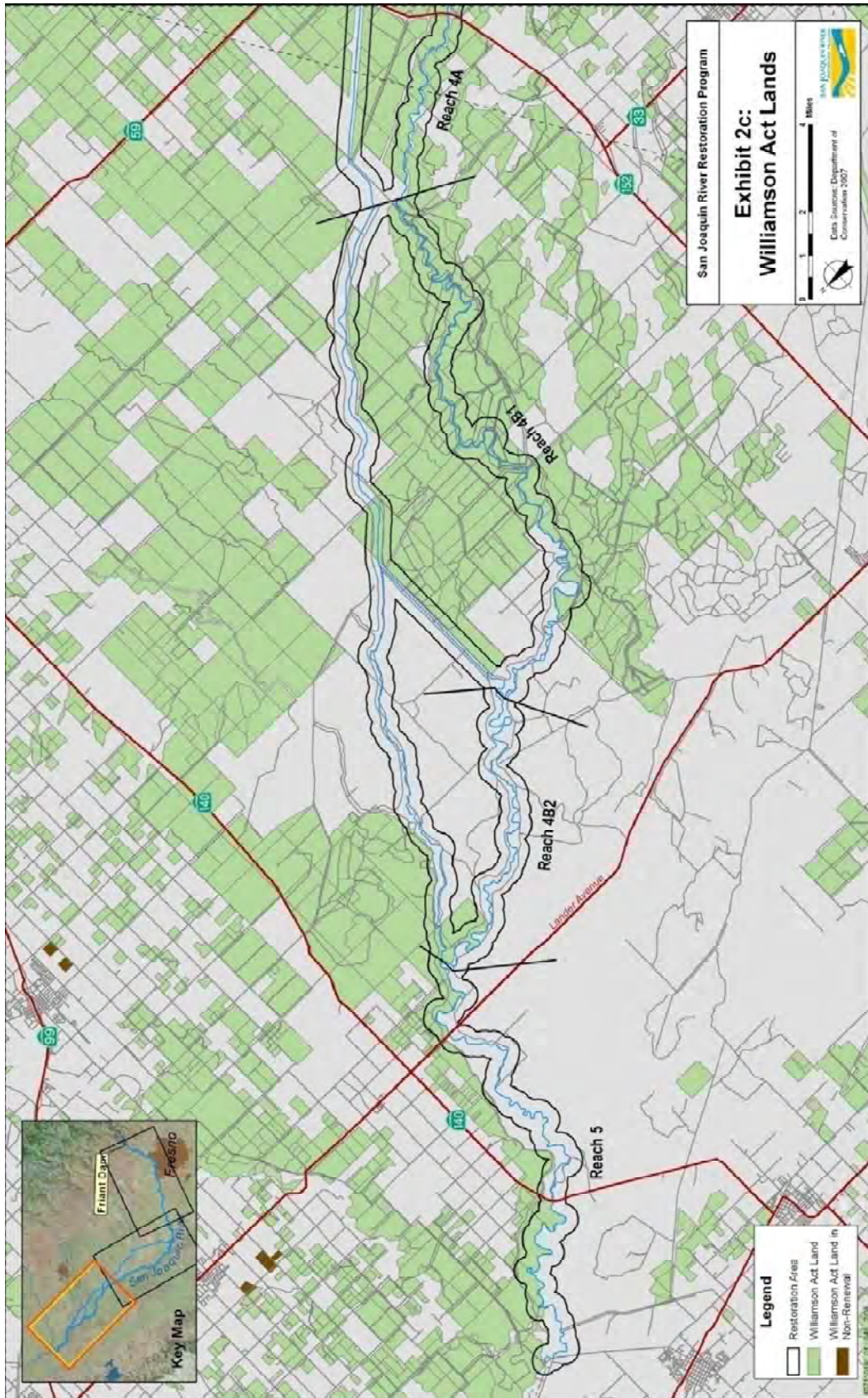




This Page Left Blank Intentionally



This Page Left Blank Intentionally



This Page Left Blank Intentionally

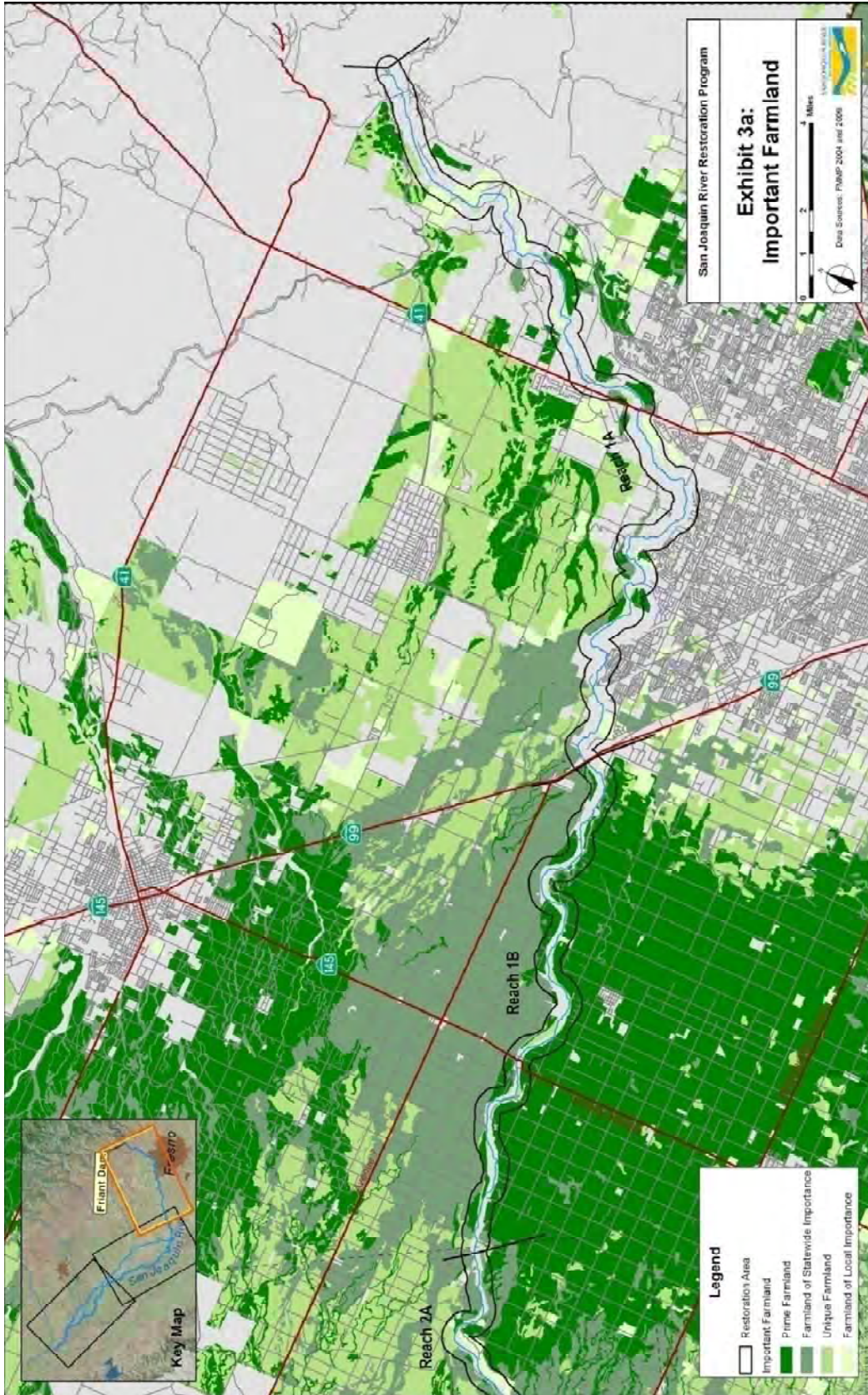
Attachment

Important Farmland

**Draft
Land Use Appendix**

**SAN JOAQUIN RIVER
RESTORATION PROGRAM**

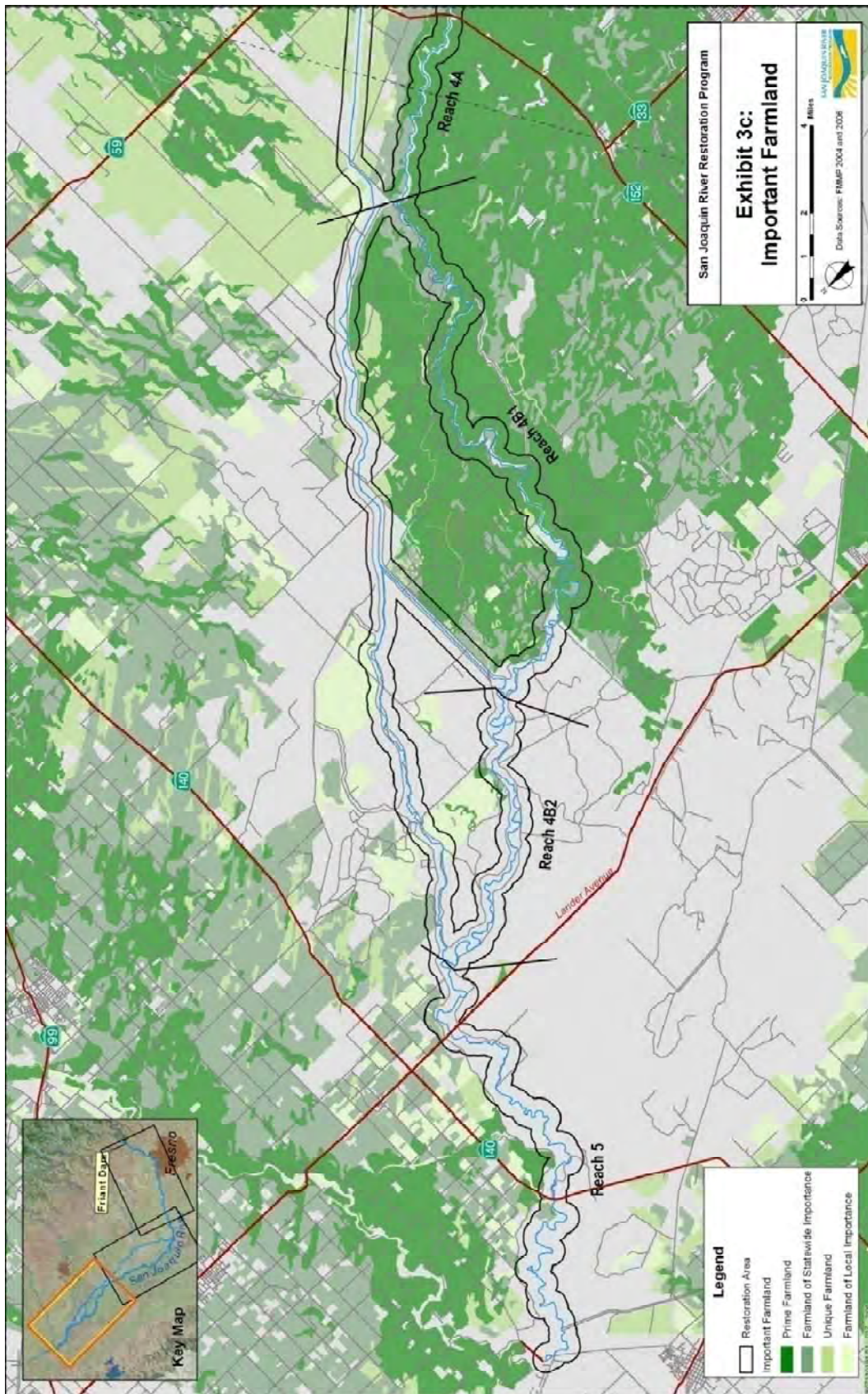




This Page Left Blank Intentionally



This Page Left Blank Intentionally



This Page Left Blank Intentionally