

RECLAMATION

Managing Water in the West

New Melones Lake Area Draft Resource Management Plan and Environmental Impact Statement



**U.S. Department of the Interior
Bureau of Reclamation
Central California Area Office**

October 2009

This page intentionally left blank.

1 **Executive Summary**

2 **Introduction**

3 The US Department of the Interior, Bureau of Reclamation (Reclamation) has prepared
4 this draft resource management plan (RMP) and environmental impact statement (EIS)
5 for the New Melones Lake Area. The draft RMP provides a range of alternatives for
6 managing Reclamation-administered lands within the New Melones Lake Area in
7 Tuolumne and Calaveras Counties, California, and the EIS is an analysis of the
8 environmental effects that could result from implementing the actions defined in the draft
9 RMP.

10 Located in the foothills of the Sierra Nevada, New Melones Lake is the fifth largest
11 reservoir in California and the most recent major project incorporated into the Central
12 Valley Project. Completed in 1979, New Melones dam holds water from the Stanislaus
13 River and other tributaries within a 980-square-mile watershed. The plan area
14 encompasses approximately 30,000 acres, including New Melones Lake (12,500 acres)
15 and surrounding project lands. The project provides flood control for the lower Stanislaus
16 River and San Joaquin River Delta, irrigation and municipal water supplies, peak use
17 period hydroelectric production, recreation, water quality, and fish and wildlife
18 enhancement.

19 Current and past decisions directing the management of Reclamation-administered lands
20 in the planning area are based on the New Melones Lake Area Master Plan (Master Plan)
21 approved in 1976 (USACE and Reclamation 1976), on subsequent amendments to that
22 plan, and on applicable federal, state, and local regulations. The Master Plan provides a
23 set of land use allocations, development recommendations and objectives, and constraints
24 to guide the management of each resource.

25 A new RMP, which will replace the Master Plan, will disclose to the public the decisions
26 being made and their impact on the environment. It will help the public understand the
27 constraints and legal requirements that provide the framework within which Reclamation
28 must manage these lands. It also will provide consistent and integrated decisions for
29 managing Reclamation-administered lands in the planning area.

30 This RMP/EIS is the result of a collaboration involving Reclamation, interested members
31 of the public, stakeholders in the outcome of the plan, and relevant resource agencies.
32 Input provided by these sources has been combined with guidance provided in
33 Reclamation's *Resource Management Plan Guidebook* (Reclamation 2003) in order to
34 determine, and continue, the most appropriate uses of Reclamation lands within the study
35 area. Other purposes are to explore methods to enhance and protect the resources found
36 on those lands, to identify or propose long-term resource protection programs, and to

1 identify financially feasible opportunities or partnerships to help decision makers manage
2 lands and resources within the study area.

3 The guidance provided in this RMP will help New Melones managers fulfill
4 Reclamation’s mission, which is “to manage, develop, and protect water and related
5 resources in an environmentally and economically sound manner in the interest of the
6 American public.” An EIS is incorporated into this document to meet the requirements of
7 the National Environmental Policy Act of 1969 (NEPA) and Council on Environmental
8 Quality regulations for implementing NEPA (40 Code of Federal Regulations 1500-
9 1508).

10 This draft RMP/EIS addresses the interrelationships among the various resources at the
11 New Melones Lake Area and provides management options to balance resource
12 management in accordance with Reclamation’s mission and authority with the needs of
13 the public to use these lands.

14 **Purpose and Need**

15 The purpose of this RMP/EIS is to establish a conceptual plan detailing the management
16 framework for the conservation, protection, enhancement, development, and use of the
17 physical and biological resources in the New Melones Lake Area. Resource management
18 and recreation interest and the types and level of use have changed over the last several
19 decades. The Reclamation Recreation Management Act (RRMA) of 1992 (Public Law
20 [PL] 102-575, Title 28 [2805(c)(1)(A)]) directs Reclamation to “provide for the
21 development, use, conservation, enhancement, and management of resources on
22 Reclamation lands.” These changes, combined with requirements under the RRMA, have
23 created a need for Reclamation to evaluate the contemporary resource and recreation
24 management for the New Melones Lake Area.

25 The purposes of the New Melones RMP/EIS are as follows:

- 26 • Provide a framework to ensure that Reclamation plans and activities comply with
27 all appropriate federal, state, and local laws, rules, regulations, and policies;
- 28 • Provide for the protection and management of natural and cultural resources and
29 for public health and safety;
- 30 • Provide for recreation management and development and other uses, consistent
31 with contemporary and professional resource management and protection
32 theories, concepts, and practices;
- 33 • Ensure that management of quality recreational facilities and opportunities is
34 compatible with other environmental resources and that management planning is
35 based on expressed public need and the ability of the land and water resources to
36 accommodate improved facilities and increased visitor use;
- 37 • Be consistent with Reclamation fiscal goals and objectives; and
- 38 • Support Reclamation’s core mission of delivering water and generating power.

1 **Planning Issues**

2 The following issues were identified by the public during the scoping process and by
3 Reclamation during project planning. Reclamation addressed these issues when creating
4 the goals and management actions identified in Chapter 3:

- 5 • Improving access to the management area while protecting resources and
6 addressing logistical and financial challenges;
- 7 • Protecting sensitive resources while accommodating increasing numbers of
8 visitors with an expanding range of interests;
- 9 • Enhancing fish and wildlife habitats and other natural resources;
- 10 • Determining the types of recreational activities Reclamation will manage in the
11 New Melones Lake Area;
- 12 • Providing recreation opportunities and services without diminishing the quality of
13 the resources;
- 14 • Optimizing a fee program in order to enhance visitor services and protect the
15 resources;
- 16 • Providing adequate law enforcement to increase visitor safety and reduce illegal
17 activities;
- 18 • Identifying and implementing necessary changes in facilities or infrastructure;
- 19 • Protecting public health and safety; and
- 20 • Fostering positive relationships with neighboring landowners and communities
21 while meeting Reclamation's management commitments.

22 **Public Involvement**

23 Reclamation held several public scoping meetings and alternatives development
24 workshops to solicit issues and concerns and to develop alternatives to be analyzed in the
25 RMP. In addition, Reclamation developed a mailing list (and accompanying database),
26 produced and distributed newsletters, and developed a New Melones Lake Area Web site
27 to help disseminate both New Melones Lake Area-related and RMP-related information.

28 In order to educate the public about the RMP process for the New Melones Lake Area
29 and to solicit its input, Reclamation held public scoping meetings in three locations
30 within the project planning area during the last week of January 2007. Most comments
31 focused on access, biological resources, facilities, and recreation. In late September 2007,
32 Reclamation held two alternatives development workshops to obtain further input on
33 possible management actions and opportunities for the New Melones Lake Area. Open
34 house meetings were held in September 2008 to solicit public input on Draft RMP/EIS
35 Chapters 1-3 (currently Chapters 1-5). Reclamation used the information collected from

1 these gatherings, along with additional comments submitted during the planning process,
2 to develop the draft planning proposals.

3 **Management Alternatives**

4 The basic goal of developing alternatives is to prepare different combinations of resource
5 uses to address issues and to resolve conflicts among uses. Alternatives must meet the
6 purpose and need, must be reasonable, must provide a mix of resource protection,
7 management use, and development, must be responsive to the issues (each issue must be
8 addressed in at least one alternative), must meet the established planning criteria, and
9 must meet federal laws, regulations, policies, and standards.

10 Four management alternatives were developed to address the major planning issues. Each
11 alternative provides direction for resource programs based on the development of specific
12 goals and management actions. Each alternative describes specific issues influencing land
13 management and emphasizes a different combination of resource uses, allocations, and
14 restoration measures to address issues and resolve conflicts among users. Resource
15 program goals are met in varying degrees across alternatives. Management scenarios for
16 programs not tied to major planning issues or mandated by laws and regulations often
17 contain few or no differences in management between alternatives.

18 Alternative A, the No Action Alternative, is a continuation of the current management
19 and is based on existing planning decisions and amendments. Alternative B, the Increased
20 Use Alternative, emphasizes development of recreational resources and infrastructure,
21 with a goal of encouraging and accommodating increasing numbers of visitors while
22 protecting natural and cultural resources, as required by law. Alternative C, the
23 Conservation Alternative, emphasizes active management of natural and cultural
24 resources and places less emphasis on resource use than under Alternative A. Alternative
25 D, the Multiple Use Alternative, seeks to balance the projected increases in visitors and
26 demand for an array of user opportunities with the need to protect, enhance, and conserve
27 the natural and cultural resources that are found in the planning area.

28 **Management Actions Common to All Alternatives**

29 Each of the alternatives has different components and management actions that would
30 attain the direction of that alternative. However, several components and management
31 actions are common to the No Action and action alternatives.

32 Under all alternatives, Reclamation would comply with all applicable laws and
33 regulations, including those relating to air and water quality, hazardous materials, fish
34 and wildlife, special status species, trespass, health and safety, transportation, recreation,
35 cultural resources, social and economic resources, and environmental justice.
36 Reclamation would continue to work with appropriate agencies and entities to adequately
37 manage the New Melones Lake Area. Further, the New Melones Lake Project would
38 continue to be designated and managed as a Special Use Area, pursuant to 43 CFR, Part
39 423.

1 **Alternative A (No Action—Continue Current Management)**

2 Alternative A is the continuation of current management and would continue present
3 management practices based on the existing land use plan and plan amendments. Valid
4 and feasible decisions contained in the 1976 Master Plan would be implemented, if they
5 are not already completed. Direction contained in existing laws, regulations, policies, and
6 standards would also continue to be implemented, sometimes superseding provisions of
7 the 1976 Master Plan. The current levels, methods, and mix of multiple use management
8 of public lands in the New Melones Lake Area would continue, and resource values
9 would generally receive attention at present levels. Existing facilities, roads, and trails
10 would not be expanded or updated unless it were done under the direction of specific
11 health and safety or Americans with Disabilities Act guidelines. Best management
12 practices would continue to be used to address fire response at New Melones Lake. Land
13 management would also comply with land allocation identified in the 1976 Master Plan.

14 **Alternative B (Increased Use)**

15 Alternative B emphasizes active management for access and recreation. Protecting other
16 resources would be secondary to accommodating recreational interests, although all
17 resources would be managed, at minimum, to the levels required by law. This alternative
18 also emphasizes opportunities for developed and motorized recreation. Alternative B
19 would focus on increasing access (roads and trails) and expanding facilities (such as
20 concessions and fish cleaning stations). The key components of this alternative are
21 evaluating the addition of recreation facilities at Glory Hole, Tuttle town, Bowie Flat,
22 Westside, French Flat, Bear Creek, Parrotts Ferry, Mark Twain, and Greenhorn Green
23 Management Areas; allowing increased levels of houseboat, water vessel, and equestrian
24 use; and relocating the equestrian staging area. Prescriptive grazing may be allowed to
25 assist in invasive weed removal and fire protection. WROS categories would change
26 certain management areas from Rural Natural to Rural Developed, or from Semi
27 Primitive to Rural Natural.

28 **Alternative C (Conservation)**

29 Alternative C deemphasizes recreational goals and facilities in favor of natural resource
30 values. There would be less active management of recreational resources and facilities
31 than under the other alternatives. Alternative C emphasizes tighter controls on motorized
32 recreation. The key components of this alternative include potentially decreasing the level
33 of houseboat use and minimizing development of recreation areas in Rural Natural and
34 Rural Developed Management Areas, in addition to relocating the equestrian staging
35 area. New trails would not be developed unless needed to protect sensitive species and
36 habitats. Access to caves and rock climbing routes would also be restricted to protect
37 unique and special status species habitats. This alternative would allow the use of
38 chemical, biological, and mechanical controls to help eradicate invasive species. WROS
39 categories would change slightly to less developed uses.

40 **Alternative D (Multiple Use)**

41 Alternative D is intended to balance management of recreational uses and resources with
42 management of natural and cultural resources. This alternative was developed by
43 combining those aspects of Alternatives A, B, and C that provide the most balanced
44 outcome for managing public lands within the New Melones Lake Area. Alternative D

1 incorporates many management objectives and actions from the first three alternatives
2 and may include new management direction as necessary. This alternative also generally
3 allows for more uses and active resource management than under Alternative C but less
4 than under Alternative B. The key components of this alternative include allowing
5 increased watercraft use with new lake use zones and term limits for houseboats,
6 minimizing development of recreation areas in Rural Natural Areas, and relocating the
7 equestrian staging area. Reclamation would fully implement a project-wide Fire
8 Management Plan. In addition, the PWMA Interim Management Plan would be fully
9 implemented by being adopted into the New Melones RMP. Alternative D would call for
10 a moderate amount of updating and modernizing of roads, access areas, and facilities.
11 Alternative D, like Alternatives B and C, would update land use allocations based on
12 input from the public and results of the visitor use survey, Water Recreation Opportunity
13 Spectrum, and the commercial services plan. Under Alternative D, Reclamation would
14 develop and implement a long-term strategy for managing hunting as visitation and urban
15 development increase. Reclamation would also expand environmental constraints on
16 recreation activities. Trail improvements would focus on allowing a diversity of uses.
17 WROS categories would change slightly, to more developed uses.

18 **Environmental Consequences**

19 Alternative A (No Action Alternative) would be a continuation of current management.
20 Alternative B offers the greatest potential for recreational use and development but the
21 greatest potential impact on the physical and biological environment. Conversely,
22 Alternative C would have a lesser impact on physical and biological resources but a
23 greater impact on the potential for development and recreation in the New Melones Lake
24 Area. Alternative D would allow for many uses to continue but could constrain certain
25 activities in order to maintain or improve natural and cultural resources. Impacts under
26 Alternative D tend to be within the range of Alternatives B and C. Taking no action
27 would prohibit Reclamation from implementing management measures needed to both
28 protect resources and to address concerns related to recreation pressure. Detailed
29 descriptions of impacts of the four alternatives are provided in Chapter 6, along with a
30 discussion of the cumulative impacts, irretrievable and irreversible commitments of
31 resources, and unavoidable adverse impacts of the alternatives.

32 **Rationale for Identifying the Preferred Alternative**

33 Alternative D is Reclamation's preferred alternative and the proposed action alternative.
34 Reclamation selected the preferred alternative based on interdisciplinary team
35 recommendations, environmental consequences analysis of the alternatives, and public
36 input during scoping. Alternative D has received the most public support; comments
37 received have indicated the public's desire to continue conservation, while providing for
38 increased recreation opportunities.

39 Alternative A, the No Action Alternative, minimally addresses current and relevant issues
40 identified through public scoping and required components of the land use planning

1 document. Alternative A was not the preferred alternative because it does not adequately
2 address issues and concerns identified by the public or required planning components and
3 concerns of the planning team.

4 Alternatives B and C both address the identified relevant issues and required components
5 necessary in a land use planning document focusing on conservation and uses of the
6 public land. Alternatives B and C also address the public's issues and concerns through
7 identified management direction, as well as the purpose and need, but they lack a balance
8 between resource conservation and resource use allocations.

9 At this time, Alternative D, the preferred alternative, provides the most reasonable and
10 practical approach to managing the project land resources and uses, while addressing the
11 relevant issues and purpose and need. This alternative incorporates many management
12 objectives and actions from the other alternatives and may include new management
13 direction as necessary. Alternative D balances project lands management with an
14 appropriate level of flexibility to meet the overall needs of the resources and use
15 allocations. This alternative represents management that is proactive and provides
16 flexibility to adjust to changing conditions over the life of the plan, while emphasizing a
17 level of protection, enhancement, and use of the resources into the future.

18 **Comparison and Summary of Alternatives and** 19 **Environmental Consequences**

20 This section is a summary of key differences in environmental effects among the
21 alternatives. (Not all effects from proposed management actions are discussed.)

22 **Air Quality**

23 The major sources of air pollutant emissions at or near the New Melones Lake Area are
24 boating and personal watercraft use, wildland fires, agricultural burns on private lands,
25 vehicle traffic on paved and unpaved roads, campfires and camp stoves used in
26 campgrounds, internal combustion engine equipment (such as portable generators) used
27 in campgrounds, and mining and mineral development activities.

28 Alternative A includes programs and actions to maintain facilities but does not include
29 actions for constructing large facilities. Consequently, Alternative A would have limited
30 air quality effects from construction. Recreational use levels and resulting air pollutant
31 emissions would increase in proportion to regional population growth. Under Alternative
32 A, there would be lower recreation-related emissions of air pollutants than under
33 Alternatives B, C, or D.

34 Alternative B includes actions to construct various new recreation facilities, including an
35 off-highway vehicle park, campgrounds, marina facilities, wave attenuators, and floating
36 campsites. Construction activities for these facilities would result in temporary air
37 pollutant and greenhouse gas emissions. Increased visitor levels related to the availability
38 of these new facilities would be an ongoing source of additional air pollutant and
39 greenhouse gas emissions. Similar impacts would occur under Alternatives C and D, but

1 the effects would be less because less development and use would occur. Overall,
2 recreation use and new recreation facilities, and therefore the potential for recreation
3 management to affect air quality, would be greatest under Alternative B, followed by D,
4 C, and A.

5 **Noise**

6 The highest overall noise levels are expected to be in the vicinity of the campgrounds, the
7 marina, the boat launch facilities, and occupied day use areas. In general, noise
8 conditions in the New Melones Lake Area would not interfere with recreational activities
9 and experiences. Overall, recreation use and new recreation facilities, and therefore the
10 potential for recreation management to affect noise levels, would be greatest under
11 Alternative B, followed by D, C, and A. Alternative C calls for enforceable noise
12 management regulations for boating activities and other recreation activities. Due to
13 mandatory compliance with noise regulations, Alternative C would have greater potential
14 to minimize noise impacts than would Alternatives A, B, and D, under which compliance
15 with noise management regulations would be voluntary.

16 **Geological Resources**

17 Impacts on geologic resources occur from large-scale surface disturbance, erosion,
18 excavation, and vandalism. Alternatives B, C, and D include requirements that fuel
19 breaks and firebreaks would be designed to take soil stabilization into consideration,
20 indirectly decreasing the potential for subsequent erosion, as compared to Alternative A.

21 Recreational users affect soils directly by disturbing unstable soils and compacting soil.
22 These affects lead indirectly to increased erosion and reduced quality of biological crusts.
23 Groups of horses may also disturb soil in areas where they are tethered. Overall,
24 recreation use and new recreation facilities, and therefore the potential for recreation
25 management to affect geologic resources, would be greatest under Alternative B,
26 followed by D, C, and A.

27 Under Alternative C, access to caves would be controlled to reduce disturbance and
28 vandalism. The restrictions would be greater than those under Alternatives A, B, and D.

29 **Water Resources**

30 Reclamation would construct additional recreation facilities, would provide additional
31 services, and would allow additional recreation activities under Alternatives B, C, and D.
32 Some of the facilities, services, and activities would be in undeveloped areas, and would
33 increase the amount of impervious surface. This would change erosion and drainage
34 patterns, resulting in changes in water turbidity and groundwater infiltration. As the
35 incidental use of developing areas increases, the potential degradation of water quality
36 would increase. Conversely, providing facilities and receptacles for proper disposal of
37 waste would preserve water quality. Alternative B would have more new facilities,
38 services, and activities than under Alternatives C and D, and therefore the greatest effects
39 are under this alternative.

40 Effects on water resources from integrated pest management would be less under
41 Alternative C, as compared to Alternatives A, B, and D. Under Alternative C,

1 Reclamation would use target-specific herbicides. Therefore, the use of chemicals
2 capable of contaminating water would decrease.

3 **Visual Resources**

4 Effects on visual resources result from actions that would change the visual resources by
5 either introducing intrusions into the landscape or, conversely, protecting the landscape
6 from such visual intrusions. Reclamation may construct additional recreation facilities,
7 provide additional services, and allow additional recreation activities under Alternatives
8 B, C, and D. Some of the facilities, services, and activities would be in undeveloped
9 areas, resulting in loss of the natural landscape and open space and the creation of
10 nighttime light and glare. Alternative B would have more new facilities, services, and
11 activities than Alternatives C and D, so the greatest effects would be under this
12 alternative.

13 **Vegetation, Fish and Wildlife, and Special Status Species**

14 Alternative C would best protect native vegetation communities and habitat to maintain
15 biological diversity of wildlife, while Alternatives A and B allow for some compromise
16 to plant and wildlife species and their habitat conditions. Alternative D combines aspects
17 of the other alternatives to provide a flexible approach to achieving other management
18 objectives while protecting these resources.

19 Implementing the Fire Management Plan under Alternatives B, C, and D would provide a
20 clear direction for fire management at New Melones and would be the most effective way
21 to manage fire while improving vegetative communities and protecting fish and wildlife
22 and their habitats. Alternative C would be the most effective in protecting fish and
23 wildlife and restoring habitats by requiring rehabilitation of all burn areas, protecting
24 sensitive sites from damage by heavy equipment, retaining vegetation within fuel breaks,
25 and using buffer zones to protect riparian and wetland areas.

26 Invasive species prevention and treatment would be most effective under Alternative C
27 by using herbicides during appropriate times, by requiring reseeding with native seed,
28 and by restricting activities in certain areas. This would reduce weeds and increase native
29 plant cover, which would lead to improved wildlife habitats.

30 Recreation could disrupt the normal behavior pattern of wildlife as well and could
31 degrade the habitat by altering the vegetation or soil. Reclamation would construct
32 additional recreation facilities, would allow additional access, would provide additional
33 services, and would allow additional recreation activities under Alternatives B, C, and D.
34 Alternative B would allow more new facilities, services, and activities than under
35 Alternatives C and D, so the most effects would be under this alternative.

36 **General Land Management**

37 Under Alternatives B, C, and D, Reclamation would update land use allocation at New
38 Melones Lake to reflect updated information, currently used management areas, and
39 potential management from such sources as the Water Recreation Opportunity Spectrum,
40 carrying capacity study, and commercial services plan. This would convert land from its
41 current use to more appropriate uses based on recreation studies and planning. It would

1 also increase and decrease land use activities in certain areas. Land management would
2 be improved, compared to Alternative A.

3 Reclamation would construct additional recreation facilities, would provide additional
4 services, and would allow additional recreation activities under Alternatives B, C, and D.
5 Some of the facilities, services, and activities would be in undeveloped areas. Alternative
6 B would allow more new facilities, services, and activities than under Alternatives C and
7 D, so the most effects would be under this alternative. Because the specific locations and
8 feasibility of some of the proposed facilities, services, and activities have not been
9 identified, the potential impacts on land use changes could vary in intensity. For example,
10 land use designation may change, facilities and utilities infrastructure may increase, flora
11 and fauna management plans may need revising, and recreation management areas may
12 increase or decrease.

13 **Access and Transportation**

14 Alternative B would provide the most access within the New Melones Lake Area and
15 calls for the most updating and modernizing of roads and trails, followed by Alternatives
16 D, C, and A. Therefore, the greatest expansion and improvement of the access network
17 would occur under Alternative B.

18 Recreation use and new recreation facilities would be the greatest under Alternative B.
19 Increased visitation due to new recreation facilities would increase the use of roads and
20 trails and would increase the demand for new routes.

21 Under Alternative C, seaplane access to New Melones Lake would be restricted. In
22 addition, designated no-fly zones near critical intrastate would be increased and enforced,
23 except for firefighting, emergency, and military operations. New Melones Lake would
24 remain accessible to seaplanes under Alternatives A, B, and D.

25 **Public Health and Safety**

26 Under Alternatives B, C, and D, Reclamation would implement additional lake zones to
27 protect public safety. For example, Reclamation would designate additional swimming
28 areas and areas appropriate for nonmotorized or no-wake boating and houseboats. This
29 would increase public protection over Alternative A by assessing growing, incompatible
30 aquatic activities and then establishing boundaries to keep the activities apart.

31 Under Alternatives C and D, Reclamation would develop and implement a long-term
32 strategy for managing hunting as visitation and urban development increase. This policy
33 may include restrictions to meet management goals, such as complying with California
34 Fish and Game code, as well as other applicable regulations, such as Executive Order
35 13443. Because this action is expected to address conflicts between hunters and
36 nonhunters, public protection would increase, as compared to Alternatives A and B.

37 **Fire Management**

38 Under Alternative A, no fire management plan would be implemented. Instead,
39 Reclamation would continue to implement best management practices and standard
40 operating procedures to reduce fire danger and respond to wildland fire. Using the Fire

1 Management Plan under Alternatives B, C, and D would promote fire safety and
2 management and public awareness and would improve fire planning and fire conditions,
3 as compared to Alternative A. Activities under fire management would be more regulated
4 and less flexible under Alternatives C and D than under Alternatives A and B. This could
5 limit some activities, but not to the extent that it would increase fire danger or limit fire
6 suppression success.

7 Recreation has the greatest potential to affect fire management because most fires are
8 human caused (either accidental or intentional). Overall, recreation use and new
9 recreation facilities, and therefore the potential for recreation management to affect fire
10 management, would be greatest under Alternative B, followed by Alternatives D, C, and
11 A.

12 **Cultural Resources**

13 The types of effects on cultural resources resulting from many of the proposed resource
14 management actions are the same or similar for each alternative. Because planned actions
15 would be subject to review under the Section 106 of the National Historic Preservation
16 Act, there would be further site-specific consideration of cultural resource impacts.
17 Overall, the emphasis on actions that emphasize resource conservation and protection,
18 minimize development, and restrict incompatible actions under Alternative C would best
19 protect significant cultural resources, followed by Alternatives A, D, and B.

20 Under Alternatives B, C, and D, a new archaeological storage facility would be
21 constructed that meets federal curation standards.

22 **Indian Trust Assets**

23 There are no Indian Trust Assets identified within the New Melones Lake Area, so no
24 effects under any alternative are anticipated.

25 **Socioeconomic and Environmental Justice**

26 Continuing to provide both land-based and aquatic recreation opportunities would ensure
27 the continued economic contribution of recreation at the New Melones Lake Area in
28 Calaveras and Tuolumne Counties, the levels of which could vary by the amount and
29 types of recreation promoted and allowed under each alternative. Concessionaire
30 agreements with private enterprises would continue to provide business opportunities, the
31 level and type of which could vary by alternative.

32 Alternative B would provide the most recreation opportunities to accommodate increased
33 visitor use, to draw new types of recreational visitors, and to raise visitor satisfaction by
34 providing recreational amenities. The additional developed recreation areas would be
35 likely to draw in the most new types of visitor groups and concessionaires, which would
36 generate expenditures in the local economy to support increased incomes and jobs.
37 Additional concessionaire contracts could increase business activity in the local
38 economy, which could indirectly stimulate the local economy. Therefore, the greatest
39 socioeconomic effects from recreation management would occur under Alternative B,
40 followed by Alternatives D, C, and A.

1 None of the alternatives would result in direct changes in population or changes in the
2 demand for housing, schools, and public facilities and services. No low-income or
3 minority populations would be displaced or separated from community facilities, nor
4 would minority businesses be disrupted; therefore, low-income and minority groups
5 (environmental justice populations) would not be disproportionately affected by these
6 actions.

7 **Recreation**

8 Recreation experiences and the potential attainment of a variety of beneficial outcomes
9 are vulnerable to any management action that would alter the settings and opportunities
10 in a particular area. Recreation settings are based on a variety of attributes, such as
11 remoteness, the amount of human modification in the natural environment, evidence of
12 other users, restrictions, and controls, and the level of motorized vehicle use.
13 Management actions that greatly alter such features within a particular portion of the
14 planning area could affect the capacity of that landscape to produce appropriate
15 recreation opportunities and beneficial outcomes.

16 Alternative A would continue to provide the commercial services and concessions that
17 are currently available, which would serve the existing level of visitor use. The level of
18 services available under Alternative A could become less adequate in meeting visitor
19 needs and could result in reduced visitor satisfaction as recreation demand increases.

20 Alternative B would provide the most recreation opportunities to accommodate increased
21 visitor use, draw new types of recreation visitors, and raise visitor satisfaction by
22 providing recreation amenities because Alternative B would provide a range of
23 opportunities, such as new marina facilities, additional marina amenities, protected
24 floating swim docks, additional radio-controlled flying facilities, retail stores for camping
25 supplies, floating or other overnight lodging facilities, seasonal scenic cruises, restaurants
26 or cafes, a new recreational vehicle park, new special event facilities, equestrian trail
27 riding, a mountain biking course, camping facilities in a rural natural management area,
28 an off-highway vehicle park, additional water courses, skeet or target shooting, and
29 seaplane training. Permits would be offered for businesses to provide adventure guide
30 services and rental equipment. These types of recreational opportunities would be likely
31 to draw in and satisfy visitors who desire more developed types of recreation but could
32 decrease the satisfaction of visitors who desire a more primitive setting, such as wildlife
33 watching, hiking, and fishing. Providing additional developed facilities and services, with
34 an associated increase in recreational visitors, also could increase the level of user
35 conflicts on project lands.

36 Alternative C would be oriented more toward more passive uses and would tend to draw
37 more day use visitors and satisfy those visitors desiring a more primitive setting and
38 quieter experience. Because fewer developed facilities would be constructed under
39 Alternative C than under Alternative B, user conflicts generated by increased visitation
40 and competing developed uses would be less likely under Alternative C. Alternative C
41 also would be the more limiting to recreational opportunities than under Alternatives B
42 and D because it places the most protections on sensitive resources that could be affected
43 by recreation.

1 Alternative D would provide increased recreational opportunities beyond what is
2 proposed under Alternatives A and C but would limit development more than under
3 Alternative B, satisfying users that prefer developed areas more than under Alternatives
4 A and C but potentially limiting the level of competing uses than under Alternative B.
5 Table ES-1 summarizes key differences in effects on visitor use opportunities among the
6 alternatives.

Table ES-1: Alternatives Comparison of Effects on Visitor Use Opportunities

Resource (Management Action(s))	Alternative A	Alternative B	Alternative C	Alternative D
Noise (N1, N2)	- Voluntary compliance with boat and visitor noise regulations	- Same as Alternative A	- Mandatory compliance with boat and visitor noise regulations	- Same as Alternative A
Caves (C4, C5)	- Manage cave access to comply with laws and regulations; maintains current management of caves	- Expand cave access and provide interpretive opportunities	- Control cave access and close caves to interpretive activities	- Manage cave access as in Alternative A (would not expand access). - Provide interpretive opportunities as in Alternative B.
Water Resources (WR 28)	- Close former roadways in Rural Developed Management Areas when necessary for public health and safety (would limit visitor access)	- Update/improve former roadways for lake access in Rural Developed Management Areas, if funded (would improve visitor access)	- Close former roadways as in Alternative A. - Restrict vehicle use in Semi Primitive Management Areas.	- Update/improve select roads in Rural Developed Management Areas, if funded. - Restrict vehicle use in Semi Primitive Management Areas.
Fish and Wildlife - Peoria Wildlife Management Area (FW 13)	- Restrict vehicles year-round - Build trails - Allow group camping	- Restrict vehicles from December to May - Build trails - Allow group camping	- No public vehicle access - Close trails - No camping allowed	- Same as Alternative A
Fisheries and Fishing (FW 22, FW 23, AR 16, AR 17)	- Restrict/minimize disturbance of trout and warm water fish spawning areas (may limit fishing opportunities)	- Same as Alternative A	- Increased restrictions of trout and warm water fish spawning areas compared with Alternative A	- Increased use restrictions of trout spawning areas compared with Alternative A - Same use restrictions of warm water fish spawning areas compared with Alternative A

Resource (Management Action(s))	Alternative A	Alternative B	Alternative C	Alternative D
Special Status Species (SSS 1, SSS 3, SSS 5)	- Implement a climbing management plan if effects on sensitive species are identified (may limit climbing opportunities)	- Same as Alternative A	- Consider visitor use restrictions to protect special status species, including raptors and bats (may limit recreation opportunities)	- Same as Alternative A
Land Management (LM 13, LM 19)	- Do not allow OHV use - Continue closure of overlook facilities at Peoria Flat	- Allow OHV use in a designated OHV park - Reopen overlook facilities at Peoria Flat	- Same as Alternative A	- Same as Alternative A, but allow public access to Peoria Flat through guided tours
Access and Transportation (General) (TA 4, TA 5)	- Close identified roads to public vehicles - Operate/maintain substandard lake access routes/facilities	- Close the fewest roads compared with Alternative A - Update/modernize lake access routes/facilities	- Same as Alternative A	- Close roads: fewer than Alternative A, more than Alternative B - Update/modernize lake access routes/facilities
Aircraft Use (TA 12, TA 13, AR 26, AR 27)	- Continue to implement the New Melones seaplane policy	- Same as Alternative A	- Restrict access to New Melones for seaplanes - Enforce additional zoning for all aircraft	- Same as Alternative A
Access to Westside and Bowie Flat (TA 14, TA 16, TA 17)	- Operate/maintain the existing trail system - Manage Bowie Flat, while emphasizing conservation	- Consider allowing development of an access road to Westside - Optimize trail connectivity in the Westside - Increase use of Bowie Flat (multiuse trails)	- Allow access to the Westside by trails or boat - Optimize trail connectivity in the Westside - Increase use of Bowie Flat (hiking/equestrian)	- Allow access to the Westside by trails or boat - Optimize trail connectivity in the Westside - Increase use of Bowie Flat (multiuse)
Public Health and Safety (PHS 10)	- Hunting would be allowed, except in restricted areas	- Shotgun-only hunting would be allowed, except in restricted areas	- Develop/implement a strategy to manage hunting, which may include restrictions	- Same as Alternative C, but shotgun-only hunting would be allowed

Resource (Management Action(s))	Alternative A	Alternative B	Alternative C	Alternative D
Recreation - Commercial services/concessions (R 15, 16, 17, 18, 20, 23, 24, 25, 28, 29, 31, 32, 36, 38, 39, 40)	<ul style="list-style-type: none"> - Continue to operate a marina and marina-based store at Glory Hole - Continue to issue Special Event permits - Reclamation would operate/maintain New Melones facilities - Do not permit a seaplane school - Continue to operate/maintain the existing water-ski course - Do not allow skeet/target shooting - Continue to operate/maintain a radio-controlled flying facility in Peoria Flat 	<ul style="list-style-type: none"> - Construct additional marina(s) and provide additional marina amenities - Construct floating and land-based overnight lodging facilities - Issue permits for rental operations - Construct a new RV park - Construct/operate a mountain bike course through a managing partner/concession agreement - If feasible, assign operation/management of developed recreation areas to another entity - Issue permits to allow seaplane training - Allow another entity to construct/operate an equestrian trail riding business and/or skeet/target shooting range - Develop an additional water sports course - Develop additional radio-controlled flying facilities 	<ul style="list-style-type: none"> - Provide additional marina services - Construct eco-friendly land-based lodging - Reclamation would operate/maintain New Melones facilities - Do not permit a seaplane school - Allow another entity to construct/operate an equestrian trail riding business, though with less development than Alternative B - Continue to operate/maintain the existing water-ski course - Do not allow skeet/target shooting - Continue to operate/maintain a radio-controlled flying facility in Peoria Flat 	<ul style="list-style-type: none"> - Provide more additional marina services compared with Alternative C - Construct floating campsites and land-based overnight lodging facilities - Issue permits for rental operations - Construct a new RV park - Construct/operate a mountain bike course through a managing partner/concession agreement - Reclamation would operate/maintain New Melones facilities - Do not permit a seaplane school - Allow another entity to construct/operate an equestrian trail riding business - Continue to operate/maintain the existing water-ski course - Do not allow skeet/target shooting - Continue to operate/maintain a radio-controlled flying facility in Peoria Flat

Resource (Management Action(s))	Alternative A	Alternative B	Alternative C	Alternative D
Aquatic Recreation (General) (AR 5, AR 15, AR 24)	- Continue to implement lake zones to address ongoing safety concerns	- Implement additional lake zones to promote safety and protect the public by reducing user conflicts (would restrict some aquatic recreation activities in designated areas)	- Same as Alternative B, but including more restrictive zones	- Implement more restrictive lake zones compared with Alternative B, but less than Alternative C
Boating, water-skiing, wake boarding, and rafting (AR 21, AR 22, AR 23, AR 25)	- Continue operation of a water-ski course in the current location - Allow the current level of watercraft use - Continue status quo management of houseboats - Continue to issue Special Event permits	- Relocate the water-ski course to Carson Creek Cove - Allow an increased level of watercraft use - Prepare/implement a moored vessel plan - Issue permits for white-water rafting services in Camp Nine	- Continue operation of a water-ski course in the current location; do not relocate the water-ski course until a more suitable location is identified - Decrease the level of watercraft use - Prepare/implement a moored vessel plan - Do not issue permits for white-water rafting services	- Continue operation of a water-ski course in the current location; do not relocate the water-ski course until a more suitable location is identified - Allow an increased level of watercraft use - Prepare/implement a moored vessel plan - Issue permits for white-water rafting services in Camp Nine
Land-Based Recreation (General) (LR 17, LR 18, LR 21, LR 22)	- Operate/maintain the existing trail system	- Optimize connectivity between trail systems - Develop new trails - Provide for multiuse trail activities	- Optimize connectivity between trail systems - Do not develop new trails - Encourage hiking and low-impact recreation	- Same as Alternative B

Resource (Management Action(s))	Alternative A	Alternative B	Alternative C	Alternative D
Hunting (LR 33, LR 34)	-Maintain existing hunting closure areas	-Maintain existing hunting closure areas -Shotgun-only hunting would be allowed - Develop agreements to allow special hunting events	-Maintain existing hunting closure areas - Develop and implement long-term strategy for managing hunting (may increase restrictions)	- Develop and implement long-term strategy for managing hunting (may increase restrictions) -Shotgun-only hunting would be allowed -Hunting would be restricted within 150 yards of the Reclamation boundary at French Flat and Bear Creek - Develop agreements to allow special hunting events

1

TABLE OF CONTENTS

Section	Page
EXECUTIVE SUMMARY	ES-1
1. INTRODUCTION.....	1-1
1.1 Introduction	1-1
1.2 Background Information	1-3
1.2.1 Location of the New Melones Lake Area	1-3
1.2.2 Access to the New Melones Lake Area	1-3
1.2.3 New Melones Lake Area Description, Capacity, and Operation.....	1-3
1.3 Purpose of and Need for the RMP/EIS.....	1-3
1.4 Project Authority.....	1-5
1.4.1 Federal Legislation and Guidance.....	1-6
1.4.2 State and Local Regulation and Guidance	1-10
1.4.3 Operation and Maintenance of New Melones Lake	1-10
1.5 Organization of the RMP/EIS	1-11
1.6 History of New Melones Lake.....	1-12
1.6.1 Tuttletown Recreation Area.....	1-13
1.6.2 Mark Twain Recreation Area.....	1-14
1.6.3 Glory Hole Recreation Area	1-14
1.7 Existing Management Documents.....	1-14
1.7.1 Reclamation Manual	1-15
1.7.2 New Melones Lake EIS (1972) (USACE 1972)	1-15
1.7.3 New Melones Lake Area Master Plan (1976) (USACE and Reclamation 1976).....	1-15
1.7.4 Peoria Wildlife Management Area Environmental Assessment (EA) (Reclamation 2007a)	1-15
1.7.5 New Melones Lake Fire Management Plan (Reclamation 2007b)	1-15
1.7.6 New Melones Lake Draft RMP (Reclamation 1995)	1-15
1.7.7 Draft Vegetation Management Plan (Reclamation 1997)	1-16
1.7.8 Revised Draft Cave Management Plan (Reclamation 1996)	1-16
1.8 RMP/EIS Development	1-16
1.9 Management Constraints	1-16
1.9.1 Legislative Authority	1-16
1.9.2 Economic Issues and Partnership Opportunities	1-17
1.9.3 Geographic Challenges.....	1-17
1.9.4 Environmental Stewardship.....	1-18
1.10 Public Involvement.....	1-18
1.10.1 Planning Issues.....	1-18
2. DEVELOPMENT OF ALTERNATIVES.....	2-1
2.1 Introduction	2-1
2.2 New Melones Lake Management Areas.....	2-1
2.3 Formulating Alternatives	2-20
2.3.1 The Anatomy of an Alternative	2-20
2.4 Alternatives Developed	2-24

TABLE OF CONTENTS *(continued)*

Section	Page
2.5	Alternatives Considered but Eliminated from Detailed Analysis..... 2-27
2.6	Description of Alternatives..... 2-28
2.6.1	Management Actions Common to All Alternatives..... 2-28
2.6.2	Alternative A (No Action—Continue Current Management) .. 2-29
2.6.3	Alternative B (Increased Use) 2-30
2.6.4	Alternative C (Conservation) 2-31
2.6.5	Alternative D (Multiple Use)..... 2-33
3.	COMPARISON OF ALTERNATIVES..... 3-1
3.1	How to Read This Chapter 3-1
3.1.1	Alternative Terms and Definitions 3-1
4.	DESCRIPTION OF THE PROPOSED ACTION ALTERNATIVE..... 4-1
4.1	Description of the Proposed Action 4-1
4.1.1	Goals, Objectives and Implementation Strategies 4-1
5.	AFFECTED ENVIRONMENT..... 5-1
5.1	Introduction 5-1
5.2	Resources..... 5-1
5.2.1	Air Quality 5-2
5.2.2	Noise..... 5-3
5.2.3	Climate..... 5-4
5.2.4	Geology 5-5
5.2.5	Topography..... 5-13
5.2.6	Hydrology/Water Quality 5-15
5.2.7	Visual Resources 5-21
5.2.8	Vegetation..... 5-24
5.2.9	Fish and Wildlife..... 5-33
5.2.10	Special Status Species 5-38
5.2.11	General Land Management..... 5-58
5.2.12	Access and Transportation 5-61
5.2.13	Public Health and Safety..... 5-67
5.2.14	Invasive Species Control..... 5-76
5.2.15	Fire Management 5-77
5.2.16	Cultural Resources..... 5-80
5.2.17	Indian Trust Assets 5-91
5.2.18	Socioeconomic and Environmental Justice 5-91
5.2.19	General Recreation 5-106
5.2.20	Facilities, Land Use, and Management Areas 5-109
5.2.21	Aquatic Recreation..... 5-118
5.2.22	Land-Based Recreation 5-123
5.2.23	Interpretive Services and Visitor Information 5-125
5.2.24	Utilities 5-125
6.	ENVIRONMENTAL CONSEQUENCES..... 6-1
6.1	Introduction 6-1
6.1.1	Analytical Assumptions 6-2

TABLE OF CONTENTS *(continued)*

Section		Page
	6.1.2	Types of Effects (Direct, Indirect, and Cumulative)6-3
	6.1.3	Incomplete or Unavailable Information6-3
6.2	Air Quality6-4
	6.2.1	Introduction6-4
	6.2.2	Methods of Analysis6-4
	6.2.3	Effects on Air Quality Common to All Alternatives6-5
	6.2.4	Effects on Air Quality under Alternative A6-6
	6.2.5	Effects on Air Quality under Alternative B6-6
	6.2.6	Effects on Air Quality under Alternative C6-7
	6.2.7	Effects on Air Quality under Alternative D6-8
6.3	Noise6-9
	6.3.1	Introduction6-9
	6.3.2	Methods of Analysis6-9
	6.3.3	Effects on Noise Common to All Alternatives6-10
	6.3.4	Effects on Noise under Alternative A.....6-11
	6.3.5	Effects on Noise under Alternative B.....6-11
	6.3.6	Effects on Noise under Alternative C.....6-13
	6.3.7	Effects on Noise under Alternative D.....6-14
6.4	Geologic Resources6-14
	6.4.1	Introduction6-14
	6.4.2	Methods of Analysis6-15
	6.4.3	Effects on Geological Resources Common to All Alternatives6-15
	6.4.4	Effects on Geological Resources under Alternative A6-17
	6.4.5	Effects on Geological Resources under Alternative B6-18
	6.4.6	Effects on Geological Resources under Alternative C6-18
	6.4.7	Effects on Geological Resources under Alternative D6-19
6.5	Water Resources (Hydrology and Water Quality)6-20
	6.5.1	Introduction6-20
	6.5.2	Methods of Analysis6-20
	6.5.3	Effects on Water Resources Common to All Alternatives.....6-21
	6.5.4	Effects on Water Resources under Alternative A6-23
	6.5.5	Effects on Water Resources under Alternative B6-24
	6.5.6	Effects on Water Resources under Alternative C6-26
	6.5.7	Effects on Water Resources under Alternative D6-27
6.6	Visual Resources6-28
	6.6.1	Introduction6-28
	6.6.2	Methods of Analysis6-28
	6.6.3	Effects on Visual Resources Common to All Alternatives.....6-29
	6.6.4	Effects on Visual Resources under Alternative A6-31
	6.6.5	Effects on Visual Resources under Alternative B6-32
	6.6.6	Effects on Visual Resources under Alternative C6-33
	6.6.7	Effects on Visual Resources under Alternative D6-34
6.7	Vegetation6-35
	6.7.1	Introduction6-35
	6.7.2	Methods of Analysis6-35
	6.7.3	Effects on Vegetation Common to All Alternatives6-36

TABLE OF CONTENTS *(continued)*

Section		Page
	6.7.4	Effects on Vegetation under Alternative A.....6-39
	6.7.5	Effects on Vegetation under Alternative B.....6-41
	6.7.6	Effects on Vegetation under Alternative C.....6-44
	6.7.7	Effects on Vegetation under Alternative D.....6-46
6.8	Fish and Wildlife (Including Fisheries).....	6-49
	6.8.1	Introduction.....6-49
	6.8.2	Methods of Analysis.....6-49
	6.8.3	Effects on Fish and Wildlife Common to All Alternatives.....6-51
	6.8.4	Effects on Fish and Wildlife under Alternative A.....6-56
	6.8.5	Effects on Fish and Wildlife under Alternative B.....6-58
	6.8.6	Effects on Fish and Wildlife under Alternative C.....6-61
	6.8.7	Effects on Fish and Wildlife under Alternative D.....6-64
6.9	Special Status Species.....	6-66
	6.9.1	Introduction.....6-66
	6.9.2	Methods of Analysis.....6-67
	6.9.3	Effects on Special Status Species Common to All Alternatives.....6-68
	6.9.4	Effects on Special Status Species under Alternative A.....6-72
	6.9.5	Effects on Special Status Species under Alternative B.....6-74
	6.9.6	Effects on Special Status Species under Alternative C.....6-78
	6.9.7	Effects on Special Status Species under Alternative D.....6-81
6.10	General Land Management.....	6-84
	6.10.1	Introduction.....6-84
	6.10.2	Methods of Analysis.....6-84
	6.10.3	Effects on General Land Management Common to All Alternatives.....6-85
	6.10.4	Effects on General Land Management under Alternative A..6-88
	6.10.5	Effects on General Land Management under Alternative B..6-89
	6.10.6	Effects on General Land Management under Alternative C..6-91
	6.10.7	Effects on General Land Management under Alternative D..6-92
6.11	Access and Transportation.....	6-94
	6.11.1	Introduction.....6-94
	6.11.2	Methods of Analysis.....6-94
	6.11.3	Effects on Access and Transportation Common to All Alternatives.....6-94
	6.11.4	Effects on Access and Transportation under Alternative A...6-95
	6.11.5	Effects on Access and Transportation under Alternative B...6-96
	6.11.6	Effects on Access and Transportation under Alternative C..6-98
	6.11.7	Effects on Access and Transportation under Alternative D..6-99
6.12	Public Health and Safety.....	6-100
	6.12.1	Introduction.....6-100
	6.12.2	Methods of Analysis.....6-100
	6.12.3	Effects on Public Health and Safety Common to All Alternatives.....6-101
	6.12.4	Effects on Public Health and Safety under Alternative A....6-105
	6.12.5	Effects on Public Health and Safety under Alternative B....6-107
	6.12.6	Effects on Public Health and Safety under Alternative C....6-109

TABLE OF CONTENTS *(continued)*

Section	Page
6.12.7	Effects on Public Health and Safety under Alternative D.... 6-111
6.13	Fire Management..... 6-113
6.13.1	Introduction..... 6-113
6.13.2	Methods of Analysis..... 6-113
6.13.3	Effects on Fire Common to All Alternatives..... 6-113
6.13.4	Effects on Fire under Alternative A..... 6-114
6.13.5	Effects on Fire under Alternative B..... 6-115
6.13.6	Effects on Fire under Alternative C..... 6-116
6.13.7	Effects on Fire under Alternative D..... 6-117
6.14	Cultural Resources..... 6-118
6.14.1	Introduction..... 6-118
6.14.2	Methods of Analysis..... 6-119
6.14.3	Effect on Cultural Resources Common to All Alternatives.. 6-120
6.14.4	Effects on Cultural Resources under Alternative A..... 6-125
6.14.5	Effects on Cultural Resources under Alternative B..... 6-127
6.14.6	Effects on Cultural Resources under Alternative C..... 6-129
6.14.7	Effects on Cultural Resources under Alternative D..... 6-131
6.15	Indian Trust Assets..... 6-132
6.15.1	Introduction..... 6-132
6.16	Socioeconomics and Environmental Justice..... 6-133
6.16.1	Introduction..... 6-133
6.16.2	Methods of Analysis..... 6-133
6.16.3	Effects on Socioeconomics Common to All Alternatives 6-134
6.16.4	Effects on Socioeconomics under Alternative A..... 6-138
6.16.5	Effects on Socioeconomics under Alternative B..... 6-140
6.16.6	Effects on Socioeconomics under Alternative C..... 6-144
6.16.7	Effects on Socioeconomics under Alternative D..... 6-147
6.17	Recreation..... 6-149
6.17.1	Introduction..... 6-149
6.17.2	Methods of Analysis..... 6-150
6.17.3	Effects on Recreation Common to All Alternatives..... 6-151
6.17.4	Effects on Recreation under Alternative A..... 6-157
6.17.5	Effects on Recreation under Alternative B..... 6-161
6.17.6	Effects on Recreation under Alternative C..... 6-167
6.17.7	Effects on Recreation under Alternative D..... 6-171
6.18	Cumulative Effects..... 6-175
6.18.1	Air Quality..... 6-184
6.18.2	Noise..... 6-186
6.18.3	Geological Resources..... 6-186
6.18.4	Water Resources (Hydrology and Water Quality)..... 6-187
6.18.5	Visual Resources..... 6-187
6.18.6	Vegetation..... 6-188
6.18.7	Fish and Wildlife..... 6-189
6.18.8	Special Status Species..... 6-191
6.18.9	General Land Management..... 6-192
6.18.10	Access and Transportation..... 6-192
6.18.11	Public Health and Safety..... 6-193

TABLE OF CONTENTS *(continued)*

Section	Page
6.18.12 Fire.....	6-193
6.18.13 Cultural Resources.....	6-194
6.18.14 ITA.....	6-195
6.18.15 Socioeconomics and Environmental Justice	6-195
6.18.16 Recreation.....	6-195
6.19 Unavoidable Adverse Impacts.....	6-197
6.20 Irretrievable or Irreversible Commitment of Resources	6-198
6.21 Relationship of Short-Term Uses of the Environment to Long-Term Productivity	6-199
7. CONSULTATION AND COORDINATION	7-1
7.1 Introduction	7-1
7.2 Public Collaboration and Outreach.....	7-1
7.2.1 Scoping Process	7-1
7.2.2 Project Web Site	7-2
7.2.3 Project Updates	7-3
7.3 Consultation and Coordination	7-3
7.4 Distribution List	7-4
7.5 List of Preparers.....	7-4
8. REFERENCES	8-1
9. GLOSSARY	9-1

LIST OF FIGURES

Figure	Page
1-1	Project Location..... 1-2
1-2	New Melones Planning Area Boundary..... 1-4
2-1	Recreation Areas and Zone..... 2-2
2-2	Proposed New Melones Management Areas..... 2-3
3-1	New Melones Current and Proposed Seaplane and Aircraft Operation Policy 3-33
3-2	Current New Melones Restricted Water Use Zones 3-34
3-3	New Melones Water Use Zones Increased Use Alternative..... 3-35
3-4	New Melones Water Use Zones Conservation Alternative..... 3-36
3-5	New Melones Water Use Zones Multiple Use Alternative 3-37
3-6	New Melones Water and Land Use Zones- Northeast Zone- Multiple Use Alternative 3-38
3-7	New Melones Land Use Zones- No Action Alternative..... 3-39
3-8	New Melones Land Use Zones – Southeast Zone- Multiple Use Alternative... 3-40
5-1	Geology of New Melones..... 5-6
5-2	Simplified Geologic Map of Columbia Area..... 5-11
5-3	Physical Features 5-14
5-4	Watershed Boundary Overview 5-17
5-5	Watershed Boundary..... 5-18
5-6	Planning Area Boundary..... 5-59
5-7	New Melones Land Status 5-60
5-8	Roads and Access..... 5-62
5-9	Current New Melones Restricted Land Use Zones 5-68
5-10	Current New Melones Restricted Land Use - Dam – Spillway Zone..... 5-69
5-11	New Melones Water Use Zones - No Action Alternative 5-70
5-12	Fire Management Units 5-79
5-13	Recreation Areas and Zones 5-108
5-14	New Melones Current and Proposed Seaplane and Aircraft Operation Policy 5-121

LIST OF CHARTS

	Page
Chart 5-1: Population Projections 2000-2030.....	5-93
Chart 5-2: Unemployment Trends	5-97

LIST OF TABLES

Table	Page
ES-1 Alternatives Comparison of Effects on Visitor Use Opportunities.....	ES-14
1-1 Management Areas in the 1976 Master Plan.....	1-13
2-1 Proposed Management Areas and WROS Designations.....	2-4
2-2 RMP Management Goals.....	2-21
3-1 New Melones Lake Resource Management Plan Alternatives.....	3-2
5-1 New Melones Dam, Period of Record Monthly Climate Summary.....	5-4
5-2 Summary of Pertinent Cave Study Area Information.....	5-13
5-3 Existing Storage Above New Melones Lake.....	5-16
5-4 Plant Communities Found in the Planning Area.....	5-24
5-5 Fish Species of New Melones Lake.....	5-33
5-6 Federal Threatened, Endangered, Proposed, and Candidate Wildlife Species That Occur in or That May Be Affected by Projects in Calaveras and Tuolumne Counties.....	5-38
5-7 Federally Endangered, Threatened, Proposed, or Candidate Plant Species That Occur in or That May Be Affected by Projects in Calaveras and Tuolumne Counties.....	5-41
5-8 Special Status Wildlife Species* That Occur in or That May Be Affected by Projects in Calaveras and Tuolumne Counties.....	5-44
5-9 Special Status Plant Species* That Occur in or That May Be Affected by Projects in Calaveras and Tuolumne Counties.....	5-54
5-10 Annual Average Daily Traffic SR 49.....	5-63
5-11 Calaveras County Annual Average Daily Traffic SR 4.....	5-64
5-12 Tuolumne County Annual Average Daily Traffic SR 108.....	5-64
5-13 Calaveras County Annual Average Daily Traffic SR 120.....	5-64
5-14 Potential for Undiscovered Resources By Management Area.....	5-83
5-15 Cultural Chronologies for the New Melones Lake Area.....	5-84
5-16 County Population Estimates 1990-2000.....	5-92
5-17 County Population Projections 2000 and 2030.....	5-93
5-18 County Housing Estimates 1990, 2000, and 2006.....	5-94
5-19 Median Housing Value.....	5-95
5-20 County Employment Statistics (2005).....	5-96
5-21 Employment by Sector and Growth.....	5-98
5-22 Major Employers in Calaveras and Tuolumne Counties.....	5-100
5-23 Population Ethnicity Estimates for Calaveras County.....	5-104
5-24 Population Ethnicity Estimates for Tuolumne County.....	5-105
5-25 Median Household Income and Poverty, 2004.....	5-105
5-26 WROS Attributes.....	5-111
5-27 Summary of Aquatic Recreation by Management Area.....	5-119
5-28 Available Boat Ramps at New Melones Lake.....	5-122
5-29 Summary of Land-Based Recreation by Management Area.....	5-124
5-30 Estimated Peak-Day (Gallons) Water Demand for 2040.....	5-126
5-31 Estimated Maximum Wastewater Production Rates (Gallons per Day) for 2004.....	5-127

LIST OF APPENDICES

Appendix

- A Applicable Regulations
- B New Melones Lake 2008 Water Recreation Opportunity Spectrum Inventory and Management Alternatives
- C Draft New Melones Lake Moored Vessel Plan
- D Fire Management Plan
- E New Melones Lake Policy
- F Cave Characteristics
- G Hazard Marking Program
- H Photographic Log
- I Recreation Facilities 2007

LIST OF ACRONYMS

Acronym or Abbreviation	Full Phrase
AADT	annual average daily traffic
ACEC	area of critical environmental concern
ACHP	Advisory Council on Historic Preservation
ADA	Americans with Disabilities Act
APCD	air pollution control district
ARPA	Archaeological Resources Protection Act
BIA	Bureau of Indian Affairs
BLM	US Bureau of Land Management
BMP	best management practice
CAA	Clear Air Act
CAL FIRE	California Department of Forestry and Fire Protection
CARB	California Air Resources Board
CCAO	US Bureau of Reclamation, Central California Area Office
CDFG	California Department of Fish and Game
CEQ	Council on Environmental Quality
CESA	California Endangered Species Act
CFR	Code of Federal Regulations
CNDDDB	California Natural Diversity Database
CNPS	California Native Plant Society
CRLF	California red-legged frog
CSP	commercial services plan
CVP	Central Valley Project
CWA	Clean Water Act
dBA	A-weighted decibels
draft FMP	draft fire management plan
EA	environmental assessment
EIS	environmental impact statement
EO	executive order
EPA	Environmental Protection Agency
ESA	Endangered Species Act
FAA	Federal Aviation Administration
FERC	Federal Energy Regulatory Commission
FLREA	Federal Lands Recreation Enhancement Act
FMB	Foothills Metamorphic Belt
FMU	fire management unit
FR	Federal Register
FRCC	fire regime condition class
HazMat	hazardous waste/materials
ITA	Indian Trust Asset
LEPN	Lands Excess to Project Needs
Master Plan	New Melones Lake Area Master Plan of 1976
MBTA	Migratory Bird Treaty Act
MOA	memorandum of agreement
MOU	memorandum of understanding

LIST OF ACRONYMS *(continued)*

Acronym or Abbreviation	Full Phrase
msl	mean sea level
NAAQS	National Ambient Air Quality Standards
NAGPRA	Native American Graves Protection and Repatriation Act
NCPA	Northern California Power Authority
NEPA	National Environmental Policy Act
NHPA	National Historic Preservation Act of 1966
NOAA	National Ocean and Atmospheric Administration
NOAA Fisheries Service	NOAA's National Marine Fisheries Service
NRHP	National Register of Historic Places
O&M	operations and maintenance
OHV	off-highway vehicle
ORIU	Operations Recreation - Intensive Use
ORLU	Operations Recreation – Low-Density Use
PG&E	Pacific Gas and Electric Company
PILT	payment in lieu of taxes
PL	Public Law
PM2.5	particulate matter less than 2.5 microns in equivalent aerodynamic diameter
PM10	particulate matter less than 10 microns in equivalent aerodynamic diameter
PO	Project Operations
PWMA	Peoria Wildlife Management Area
RCRA	Resource Conservation and Recovery Act
Reclamation	US Bureau of Reclamation
RIR	Resource Inventory Report
RLIU	Recreation Lands Intensive Use
RLLU	Recreation Lands Low-Density Use
RMP	resource management plan
RRMA	Reclamation Recreation Management Act
RV	recreational vehicle
SHPO	State Historic Preservation Office
SIP	state implementation plan
SOP	standard operating procedure
SR	state route
SWRCB	State Water Resources Control Board
TCID	Tuolumne County Irrigation District
TMDL	total maximum daily load
USACE	US Army Corps of Engineers
USC	US Code
USFS	US Forest Service
USFWS	US Fish and Wildlife Service
USGS	US Geological Survey
WRCC	Western Regional Climate Center
WROS	Water Recreation Opportunity Spectrum
WUI	wildland-urban interface

This page intentionally left blank.

1. Introduction

1.1 Introduction

The US Department of the Interior, Bureau of Reclamation (Reclamation) has prepared this draft resource management plan (RMP) and environmental impact statement (EIS) for the New Melones Lake Area (Figure 1-1). The draft RMP provides a range of alternatives for managing Reclamation-administered lands within the New Melones Lake Area in Tuolumne and Calaveras Counties, California, and the EIS is an analysis of the environmental effects that could result from implementing the actions defined in the draft RMP.

Current and past decisions directing the management of Reclamation-administered lands in the planning area are based on the New Melones Lake Area Master Plan (Master Plan) approved in 1976 (USACE and Reclamation 1976), subsequent amendments to that plan, and by applicable federal, state, and local regulations. The Master Plan is a land use plan that provides a set of land use allocations, development recommendations and objectives, and constraints to guide the management of each resource.

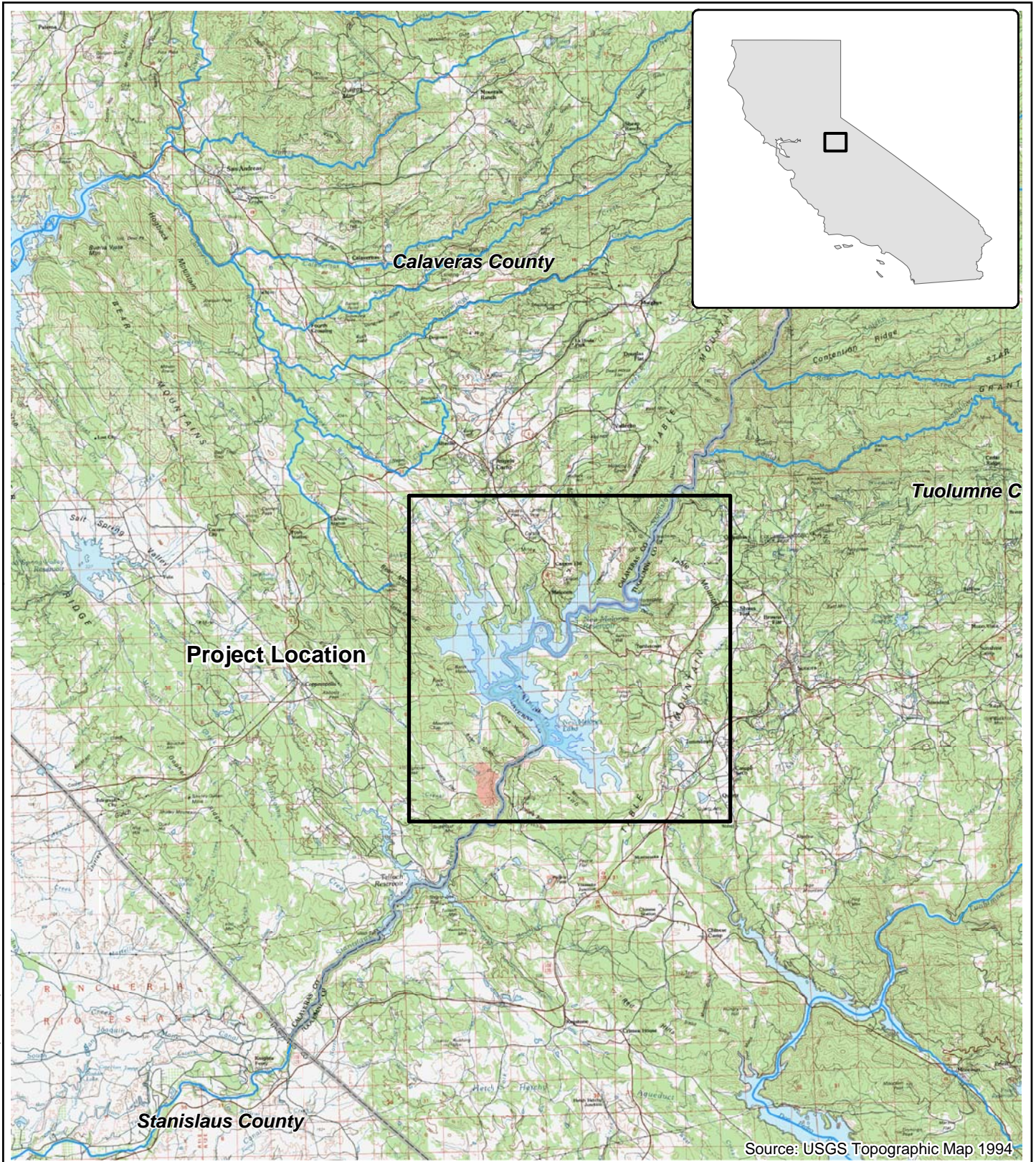
A new RMP/EIS, which will replace the Master Plan, will disclose to the public the decisions being made and their impact on the environment. It also will help the public understand the constraints and legal requirements that provide the framework within which Reclamation must manage these lands and will provide consistent and integrated decisions for managing Reclamation-administered lands in the planning area.

The guidance provided in this RMP/EIS will help New Melones managers fulfill Reclamation’s mission, which is “to manage, develop, and protect water and related resources in an environmentally and economically sound manner in the interest of the American public.”

This draft RMP/EIS addresses the interrelationships among the various resources at the New Melones Lake Area and provides management options to balance resource management with Reclamation’s mission and authority with the needs of the public to use these lands.

An EIS is incorporated into this document to meet the requirements of the National Environmental Policy Act of 1969 (NEPA), Council on Environmental Quality (CEQ) regulations for implementing NEPA (40 Code of Federal Regulations [CFR] 1500-1508) (CEQ 1978), and requirements of Reclamation’s Draft NEPA Handbook (Reclamation 2000).

R:\NEW18885\GIS\Layouts\Project Location REV.mxd - 08/08/07 - YE



Source: USGS Topographic Map 1994

Project Location

New Melones Lake Area, California
Central California Area Office



Figure 1-1

1 **1.2 Background Information**

2 **1.2.1 Location of the New Melones Lake Area**

3 The New Melones Lake Area is in the foothills of the Sierra Nevada, at approximately
4 1,100 feet (340 m) above sea level and is bisected by the Tuolumne and Calaveras county
5 line (Figure 1-2).

6 **1.2.2 Access to the New Melones Lake Area**

7 Primary access to the New Melones Lake Area is from Highway 49, which crosses the
8 lake on the Stevenot Stanislaus River Bridge. Connector roads to specific locations at the
9 lake are accessible from Highway 49 and from county roads that intersect the area. The
10 communities of Angel’s Camp, Sonora, Columbia, and Copperopolis are connected to the
11 lake either by Highway 49 or by local roads.

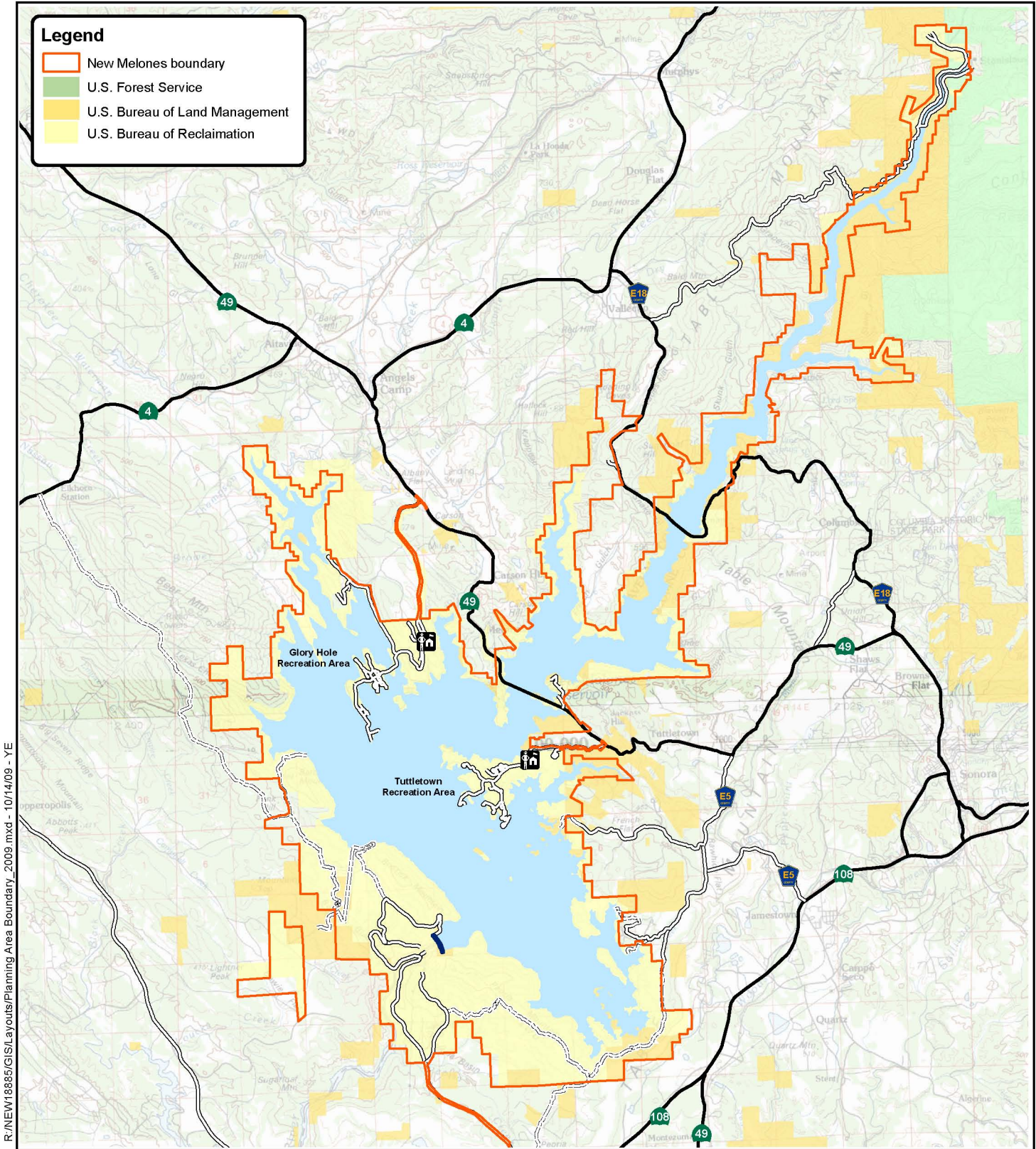
12 **1.2.3 New Melones Lake Area Description, Capacity, and Operation**

13 New Melones Lake is the fifth largest reservoir in California and the most recent major
14 project incorporated into the Central Valley Project. Completed in 1979, New Melones
15 dam holds water from the Stanislaus River and other tributaries within a 980-square-mile
16 (250,000 hectare) watershed. When full, the storage capacity is 2.4 million acre-feet (2.9
17 million megaliters), with 100 miles (160 kilometers) of surrounding shoreline. The
18 surface area of New Melones Lake is 12,500 acres (5,000 hectares), and surrounding
19 project lands are approximately 17,500 acres (7,000 hectares), for a total of 30,000 acres
20 (12,000 hectares). For the purposes of this document, the New Melones Lake Area is
21 defined as New Melones Lake and the surrounding project lands.

22 The project provides flood control for the lower Stanislaus River and San Joaquin River
23 Delta, irrigation and municipal water supplies, peak use period hydroelectric production,
24 recreation, water quality, and fish and wildlife enhancement.

25 **1.3 Purpose of and Need for the RMP/EIS**

26 The purpose of this RMP/EIS is to establish a conceptual plan detailing the management
27 framework for the conservation, protection, enhancement, development, and use of the
28 physical and biological resources in the New Melones Lake Area. Changes in resource
29 management and recreation interest, changes in the types of use, and changes in the level
30 of use have occurred over the last several decades. The Reclamation Recreation
31 Management Act (RRMA) of 1992 (Public Law [PL] 102-575, Title 28 [2805(c)(1)(A)])
32 directs Reclamation to “provide for the development, use, conservation, enhancement,
33 and management of resources on Reclamation lands.” These changes, combined with
34 requirements under the RRMA, have created a need for Reclamation to evaluate the
35 contemporary resource and recreation management for the New Melones Lake Area.



R:\NEW18885\GIS\Layouts\Planning Area Boundary_2009.mxd - 10/14/09 - YE

New Melones Planning Area Boundary

New Melones Lake Area, California
 Central California Area Office

Figure 1-2

1 The purposes of the New Melones RMP/EIS are as follows:

- 2 • Provide a framework to ensure that Reclamation plans and activities comply with
3 all appropriate federal, state, and local laws, rules, regulations, and policies;
- 4 • Provide for the protection and management of natural and cultural resources and
5 for public health and safety;
- 6 • Provide for recreation management and development and other uses, consistent
7 with contemporary and professional resource management and protection theories,
8 concepts, and practices;
- 9 • Ensure that management of quality recreational facilities and opportunities is
10 compatible with other environmental resources and that management planning is
11 based on expressed public need and the ability of the land and water resources to
12 accommodate improved facilities and increased visitor use;
- 13 • Be consistent with Reclamation fiscal goals and objectives; and
- 14 • Support Reclamation’s core mission of delivering water and generating power.

15 The land use planning-level decisions that Reclamation will make regarding this RMP are
16 programmatic decisions based on analysis that can only be conducted on a broad scale.
17 Because of the broad scope, impact analysis of planning-level decisions is speculative
18 with respect to projecting specific activities. Subsequent documents tiered to this RMP
19 would generally contain a greater level of detail and would be subject to NEPA analysis
20 and compliance.

21 **1.4 Project Authority**

22 Reclamation’s authority to prepare RMPs is derived from the broad authority of the
23 Reclamation Act of 1902 (Chapter 1093, 32 stat. 388), the Reclamation Project Act of
24 1939 (Chapter 418, 53 Stat. 1187), the Federal Water Project Recreation Act (PL 89-72,
25 79 Stat. 213), and, more specifically, from the RRMA of 1992 (PL 102-575, Title 28
26 [2805(c)(1)(A)]). The RRMA authorized the preparation of RMPs to “provide for the
27 development, use, conservation, protection, enhancement, and management of resources
28 of Reclamation lands in a manner that is compatible with the authorized purpose of the
29 Reclamation Project associated with the Reclamation lands.”

30 Below is a brief description of important legislation governing the management of the
31 New Melones Lake Area.

1 **1.4.1 Federal Legislation and Guidance**

2 This section lists some of the federal regulations and guidelines that Reclamation
3 complies with during preparation and subsequent implementation of the RMP. Other
4 regulations that may apply to management of lands in the New Melones Lake Area are
5 listed in Appendix A.

6 ***Reclamation Act of 1902 (Chapter 1093, 32 Stat. 388)***

7 This act set aside money for the construction and maintenance of irrigation projects. The
8 newly irrigated land would be sold and money would be put into a revolving fund that
9 supported more such projects. This act also established the Bureau of Reclamation to
10 administer the program.

11 ***Reclamation Project Act of 1939 (43 US Code [USC], Section 485)***

12 This act provided a feasible and comprehensive plan for the variable payment of
13 construction charges on United States reclamation projects, to protect the investment of
14 the United States in such projects, and for other purposes.

15 ***Flood Control Acts of 1944 and 1962 (PL 78-534 and PL 87-874)***

16 These acts authorized construction of New Melones for the purposes of flood control,
17 irrigation, power generation, general recreation, water quality, and fish and wildlife
18 enhancement. In addition, the Flood Control Act of 1962 describes the responsibilities of
19 the Secretary of the Army and the Secretary of the Interior at the New Melones project.

20 ***Federal Water Project Recreation Act of 1965 (PL 89-72)***

21 This act requires that recreation and fish and wildlife enhancement be given full
22 consideration in federal water development projects. The act authorizes the use of federal
23 water project funds for land acquisition in order to establish refuges for migratory
24 waterfowl and authorizes the Secretary of the Interior to provide facilities for outdoor
25 recreation and fish and wildlife at all reservoirs under the Secretary's control, except
26 those within National Wildlife Refuges.

27 ***Reclamation Recreation Management Act of 1992 (PL 102-575, Title 28***
28 ***[2805(c)(1)(A)]***

29 This act amends the Federal Water Project Recreation Act of 1965 (PL 89-72) and
30 authorizes the preparation of RMPs to "provide for the development, use, conservation,
31 protection, enhancement, and management of resources of Reclamation lands in a manner
32 that is compatible with the authorized purposes of the Reclamation project associated
33 with the Reclamation lands." This act adds a non-federal partner cost share requirement
34 to enhance accomplishment of Reclamation projects. A non-federal partner is any
35 governmental organization chartered by a state, county, or local government agent.
36 Conversely, all nonprofit organizations or businesses are excluded from a federal cost
37 share under PL 89-72. It is required that the cost share entity have the capability to

1 provide at least 50 percent of the cost of the project and provide up-front funding for
2 planning activities. In addition, the cost share entity provides services and facilities that
3 are open to the general public; cost sharing will not support private exclusive use on
4 federal lands. The cost share entity also must show the capability to provide at least 50
5 percent of the costs incurred in long-term operation and maintenance (O&M) of the
6 facilities.

7 ***National Environmental Policy Act of 1969 (NEPA) (42 USC, Sections 4321 et seq.)***

8 Under NEPA, federal agencies must consider the environmental consequences of
9 proposed major actions. The spirit and intent of NEPA is to protect and enhance the
10 environment through well-informed federal decisions, based on sound science. NEPA is
11 premised on the assumption that providing timely information to the decision maker and
12 the public concerning the potential environmental consequences of proposed actions
13 would improve the quality of federal decisions. Thus, the NEPA process includes the
14 systematic, interdisciplinary evaluation of potential environmental consequences expected
15 to result from implementing a proposed action. This document is a joint RMP/EIS to
16 fulfill NEPA's requirements.

17 ***Clean Water Act (CWA) (33 USC, Sections 1251 et seq.) and Implementing***
18 ***Regulations (33 CFR, Parts 320-330, 335-338, 40 CFR, Parts 104-140, 230-233, 401-***
19 ***471)***

20 The CWA of 1972, PL 92-500, is the law under which most US Army Corps of Engineers
21 (USACE) permits are issued for discharging fill into wetlands. Most of the CWA deals
22 with water pollution, which is the purview of the US Environmental Protection Agency
23 (EPA). Responsibility for disposing of dredged material was delegated to the USACE
24 because of its historic role in that arena, but the EPA still maintains ultimate
25 responsibility for overseeing the program. USACE regulations are published at 33 CFR,
26 Parts 320-384; those of the EPA are published at 40 CFR, Parts 230-233 and are often
27 referred to as Section 404 guidelines.

28 Section 404 defines dredge and fill responsibilities under the CWA. Exemptions for
29 Section 404 permits are granted for normal agricultural, ranching, and silvicultural
30 activities, as well as for maintaining existing drains, culverts, farm ponds, and roads. The
31 USACE manages the wetland permitting program, but the EPA has veto power over
32 USACE permit decisions, and the US Fish and Wildlife Service (USFWS) and the
33 National Oceanic and Atmospheric Administration's (NOAA) National Marine Fisheries
34 Service (NOAA Fisheries Service) have consultation rights. The USACE and the EPA
35 share enforcement authority, although states may adopt administration of parts of the
36 program from the USACE, with EPA oversight. The point of contact for Section 404
37 permit issues is the USACE.

38 ***Clean Air Act (42 USC, Sections 7401 et seq.)***

39 The principal federal law protecting air quality is the Clean Air Act (CAA), which is
40 enforced by the EPA. The CAA regulates air emissions from area, stationary, and mobile

1 sources. Under this law, National Ambient Air Quality Standards (NAAQS) are
2 established for each state by the EPA in order to protect public health and the
3 environment (EPA 2008). The CAA requires areas with unhealthy levels of ozone, carbon
4 monoxide, nitrogen oxide, sulfur oxide, and inhalable particulate matter to develop State
5 Implementation Plans, describing how they will attain NAAQS in accordance with 40
6 CFR 52.220. State Implementation Plans are not single documents, but a compilation of
7 new and previously submitted plans, programs, district rules, state regulations, and
8 federal controls (CARB 2003).

9 ***Executive Order (EO) 11990: Protection of Wetlands (42 Federal Register [FR]***
10 ***26961, 5/25/77)***

11 This order requires agencies to minimize destruction of wetlands when managing lands,
12 administering federal programs, or undertaking construction. Agencies are also required
13 to consider the effects of federal actions on the health and quality of wetlands.

14 ***EO 11593: Protection and Enhancement of the Cultural Environment (36 FR 8921,***
15 ***1/15/71)***

16 This order requires federal agencies to inventory historic properties on federal lands and
17 to document historic properties altered or demolished through federal action.

18 ***EO 13112: Invasive Species (64 FR 6183, 2/3/99)***

19 This order directs federal agencies to prevent the introduction of invasive species and
20 provide for their control and to minimize the economic, ecological, and human health
21 impacts that invasive species cause. To do this, the order established the National
22 Invasive Species Council.

23 ***EO 13443: Facilitation of Hunting Heritage and Wildlife Conservation (72 FR***
24 ***46537, 8/20/07)***

25 The purpose of this order is to direct federal agencies with programs and activities that
26 have a measurable effect on public land management, outdoor recreation, and wildlife
27 management, including the Department of the Interior and the Department of Agriculture,
28 to facilitate the expansion and enhancement of hunting opportunities and the management
29 of game species and their habitat.

30 ***Federal Bald Eagle Protection Act (16 USC, Sections 668-668d)***

31 This act prohibits persons within the United States (or places subject to US jurisdiction)
32 from “possessing, selling, purchasing, offering to sell, transporting, exporting or
33 importing any bald eagle or any golden eagle, alive or dead, or any part, nest, or egg
34 thereof.”

1 ***Fish and Wildlife Coordination Act of 1934***

2 This act requires consultation with USFWS and state agencies whenever the waters or
3 channels of a body of water are modified by a department or agency of the U.S., with a
4 view to the conservation of wildlife resources. It provides that land, water and interests
5 may be acquired by Federal construction agencies for wildlife conservation and
6 development.

7 ***Federal Endangered Species Act (ESA) (16 USC, Sections 1531–1544) and***
8 ***Implementing Regulations (50 CFR, Parts 17, 401-424, 450-453)***

9 Under the ESA of 1973, all federal agencies, in consultation with the Secretary of the
10 Interior, must take all necessary precautions to ensure that their actions do not jeopardize
11 federally listed endangered or threatened species or destroy or degrade their habitats. The
12 ESA provides a program for the conservation of threatened and endangered plants and
13 animals and the habitats in which they are found. It is designed to protect critically
14 imperiled species from extinction due to “the consequences of economic growth and
15 development untempered by adequate concern and conservation.”

16 ***Federal Migratory Bird Treaty Act (MBTA) of 1918 and Amendments (16 USC,***
17 ***Sections 703–712)***

18 The MBTA prohibits the take, harm, or trade of any migratory bird species and requires
19 that all agencies must have a policy in place to prevent harm to such species as a result of
20 that agency’s actions. The USFWS is the agency charged with administering and
21 enforcing the MBTA. An amendment to the act was passed in 1972 to include owls,
22 hawks, and other birds of prey.

23 ***Rehabilitation Act of 1973 and Americans with Disabilities Act of 1990 and 1995***
24 ***(ADA) (29 USC, Section 794)***

25 These laws require that access to federal facilities be provided for persons with
26 disabilities.

27 ***Law Enforcement Authority: PL 107-69 (2001)***

28 PL 107-69 allows Reclamation to enforce laws on its lands and facilities using law
29 enforcement services with other Department of the Interior agencies or contracting with
30 other federal, state, or local law enforcement organizations.

31 ***National Historic Preservation Act of 1966 (NHPA) (16 USC, Sections 470-470x-6)***

32 The NHPA requires federal agencies to consider historic preservation values when
33 planning their activities. Each federal agency must establish a preservation program for
34 identifying, evaluating, and protecting properties under its ownership or control that are
35 eligible for listing on the National Register of Historic Places (NRHP). In the Section 106
36 process, a federal agency must identify historic properties that may be affected by its
37 actions, must evaluate the proposed action’s effects, and then must explore ways to avoid
38 or mitigate those effects.

1 ***The Federal Cave Resources Protection Act of 1988 (16 USC, Sections 4301 –***
2 ***4309)***

3 This act requires inventory of significant caves on federal lands, implementation of
4 management measures, and provides certain protections of cave resources. It requires that
5 significant caves are considered in the preparation of resource management plans and that
6 the public be invited to participate in planning. It provides for the issuance of permits for
7 collection or removal of cave resources and identifies criminal and civil penalties for
8 prohibited acts.

9 **1.4.2 State and Local Regulation and Guidance**

10 ***California Endangered Species Act (CESA) (Fish and Game Code, Sections 2050,***
11 ***et seq.)***

12 CESA operates in a similar fashion to the federal ESA but is administered by the
13 California Department of Fish and Game (CDFG). Certain species that are federally listed
14 may not be listed on the CESA or may have different listing status.

15 ***State Fish and Game Code***

16 Birds of prey are protected in California under the State Fish and Game Code
17 (Section 3503.5, 1992), which states that it is “unlawful to take, possess, or destroy any
18 birds in the order Falconiformes or Strigiformes (birds of prey) or to take, possess, or
19 destroy the nest or eggs of any such bird except as otherwise provided by this code or any
20 regulation adopted pursuant thereto.” Construction disturbance during the breeding
21 season could result in the incidental loss of fertile eggs or nestlings or otherwise lead to
22 nest abandonment. Disturbance that causes nest abandonment or loss of reproductive
23 effort is considered “taking” by the CDFG.

24 ***California Fish and Game Code 878***

25 The CDFG enforces fishing regulations on all water surfaces.

26 **1.4.3 Operation and Maintenance of New Melones Lake**

27 The US Army Corp of Engineers (USACE) was directed to build New Melones dam by
28 congressional authority. During construction of the dam, a Memorandum of
29 Understanding (MOU) for transfer of the dam and reservoir to Reclamation from the
30 USACE was executed. Though the USACE retained construction responsibility, the
31 MOU granted Reclamation management responsibility for the New Melones project,
32 including operations of the reservoir as part of the Central Valley Project, management of
33 recreation, and enhancement and protection of fish and wildlife resources. Dam
34 construction was completed in 1979.

35 Reclamation has a staff of both permanent and seasonal employees who are responsible
36 for operations and maintenance of Reclamation lands and facilities, natural resource
37 planning, administration and volunteer management, traffic and crowd control,

1 concession oversight, campground and day use operations, special use permits issuance,
2 education and outreach, interpretation, fee collection, and patrol. Reclamation rangers
3 perform safety inspections and patrols of project lands, waters, and facilities and
4 encourage lake visitors to comply with state and federal safety laws and regulations and
5 Reclamation policies. Reclamation also has maintenance staff to operate, maintain, and
6 repair the recreation and resource management facilities, as well as provide support to the
7 power plant and dam operations. Separate staff are in charge of the dam and power plant
8 operations.

9 Reclamation is able to contract with other federal, state, local, or tribal agencies, such as
10 the Bureau of Land Management (BLM) or the National Park Service, for law
11 enforcement. Management of resources on Reclamation land emphasizes interagency
12 coordination with federal, state, and local agencies, including the US Forest Service,
13 Tuolumne County, Calaveras County, USFWS, California Department of Forestry and
14 Fire Protection (CAL FIRE), and CDFG.

15 Federal, state, and local laws are enforced by the Sheriff's Offices of Tuolumne and
16 Calaveras Counties in their respective areas of jurisdiction. Tuolumne and Calaveras
17 County Sheriff boat patrols share responsibility for enforcing boating laws at New
18 Melones Lake. The California Highway Patrol is responsible for enforcing the vehicle
19 code.

20 **1.5 Organization of the RMP/EIS**

21 The RMP/EIS provides a conceptual framework for conserving, protecting, enhancing,
22 and managing resources within the New Melones Lake Area. The EIS portion of the
23 RMP/EIS fulfills NEPA requirements by assessing broad impacts that could result from
24 implementing the various alternatives.

25 *Chapter 1 Introduction*

26 Chapter 1 provides an introduction to and overview of the study area and sets forth the
27 purpose of and need for an RMP/EIS, authorities, regulations affecting management of
28 the lake area, and overall objectives. Chapters 1 and 5 of this document and the
29 associated Resource Inventory Report (RIR) provide background information on the New
30 Melones Lake Area, the purpose and need for the RMP and EIS, project authority, history
31 of New Melones Lake, existing management programs, partnerships, and issues to be
32 addressed in the RMP.

33 *Chapter 2 Development of Alternatives*

34 Chapter 2 describes the proposed alternatives that were formulated in response to the
35 issues identified by the public and Reclamation. Included are goals, actions, and specific
36 implementation strategy recommendations. Chapter 2 also contains an explanation of the
37 alternatives development process.

1 *Chapter 3 Comparison of Alternatives*

2 Chapter 3 presents an alternatives matrix that details management goals and actions for
3 each alternative. This alternatives matrix is a comparison of the alternatives and shows
4 details of the management guidance for each alternative.

5 *Chapter 4 Description of the Proposed Action Alternative*

6 Chapter 4 describes the proposed action alternative in detail, organized by resource.
7 Chapter 4 states goals for each resource, as well as actions that Reclamation would
8 undertake to achieve those goals.

9 *Chapter 5 Affected Environment*

10 Chapter 5 contains detailed descriptions of the environmental conditions and resources in
11 the New Melones Lake Area and is organized by resource areas.

12 *Chapter 6 Environmental Consequences*

13 Chapter 6 describes the expected environmental consequences of implementing each of
14 the proposed alternatives on specific resources and resource uses.

15 *Chapter 7 Consultation and Coordination*

16 Chapter 7 describes the process by which Reclamation involved the public, resource
17 agencies, and stakeholders in the RMP/EIS preparation and selection process. It also lists
18 all comments that were received during report preparation, comment responses, and
19 report preparers.

20 **1.6 History of New Melones Lake**

21 Construction of New Melones was authorized by the Flood Control Act of December 22,
22 1944. The original authorization was subsequently modified by the Flood Control Act of
23 1962 (PL 87-874). The authorized purposes of the project included flood control,
24 irrigation, power generation, general recreation, water quality, and fish and wildlife
25 enhancement.

26 In 1972 the USACE wrote an EIS, and in 1976, it developed the Master Plan for the
27 reservoir. This plan proposed thirteen separate management areas, from a walk-in
28 campground at Clarks Flat in the Camp Nine vicinity to large recreation areas at
29 Tuttletown and Glory Hole. These management areas were assigned a land capability
30 status to describe the land use in the project area. The management areas proposed in the
31 Master Plan are presented in Table 1-1.

1

Table 1-1: Management Areas in the 1976 Master Plan

Management Area	Master Plan Land Capability
Glory Hole	ORIU, ORLU, RLIU, and RLLU
Tuttletown	ORIU, ORLU, RLIU, and RLLU
Coyote Creek	ORIU and ORLU
Skunk Gulch	RLIU, RLLU and ORLU
Grapevine Gulch	RLIU, RLLU and ORLU
Rawhide	ORIU, ORLU, RLIU, and RLLU
Camp Nine	ORLU
Parrotts Ferry	ORLU
Mark Twain	ORIU and ORLU
Bear Creek	ORIU and ORLU
Chaparral	ORIU, ORLU, RLIU, and RLLU
Melones	ORIU, ORLU, and RLIU
Coyote Creek	ORLU, RLIU, and RLLU
Bowie Flat	LEPN
New Melones Dam	PO and FWL
Wildlife Management Area	FWL

Note: The land use allocations used in this table came from the Master Plan Land Use Allocation (p. 45): Fish and Wildlife Lands (FWL), Lands Excess to Project Needs (LEPN), Operations: Recreation - Intensive Use (ORIU), Operations Recreation - Low-Density Use (ORLU), Project Operations (PO), Recreation Lands: Intensive Use (RLIU), and Recreation Lands: Low-Density Use (RLLU).

2

3 The building and filling of New Melones Reservoir became controversial and ultimately
4 litigious. During the period between when the Master Plan was completed in 1978 until
5 the reservoir was first filled in the winter of 1982-83, the construction of the recreation
6 facilities was postponed due to the ongoing litigation. At that time, the USACE applied a
7 cost-sharing requirement for recreation and fish and wildlife, as outlined in PL 89-72.

8 Efforts to find a cost share for recreational facilities ultimately were unsuccessful, and
9 only “minimal facilities,” as defined by USACE, were built. In two recreation areas,
10 Glory Hole and Tuttletown, the USACE constructed facilities beyond the “minimum
11 basic facilities” described in PL 89-72, but these were not as extensive as originally
12 described in the Master Plan (these facilities were termed “minimal facilities” by
13 USACE). The remaining planned recreation areas were never developed. These areas are
14 currently used as undeveloped areas for such purposes as wildlife management, resource
15 protection, and dispersed recreation, and have either minimum basic facilities or no
16 facilities, and limited access.

17 Some of the facilities were to be constructed immediately, with the remainder at some
18 future date. Planned facilities in the 1976 Master Plan included the following:

19 **1.6.1 Tuttletown Recreation Area**

- 20
 - Construct all of Campground E consisting of 60 campground units.

1 • Construct all of Campground D consisting of 30 campground units, Campground
2 A-30 units, and the Fishing Access Area with a 20-vehicle parking area. The
3 project includes an amphitheater and all support facilities.

4 • Construct all of Campgrounds B and C consisting of 30 units each, including all
5 support facilities.

6 **1.6.2 Mark Twain Recreation Area**

7 • Construct all of Mark Twain Area consisting of 90 picnic units, including all
8 support facilities.

9 **1.6.3 Glory Hole Recreation Area**

10 • Construct a sewage line from the Angels Creek eight-unit restroom to the main
11 sewage truck line. Construct all of Campground E consisting of 17 units and the
12 Fishing Access Area No. 1 with a 20-vehicle parking area, including all support
13 facilities.

14 • Construct all of the Day Use Area consisting of 110 units, an amphitheater, and
15 Fishing Access Area No. 2 with a 30-vehicle parking area.

16 • Construct all of the Angels Creek Campgrounds consisting of 80 units, the boat
17 ramp restroom, and all support facilities.

18 • Construct the facilities in the boat launching area, including a parking area for 80
19 car/trailers, waterlines, sewage line, fish cleaning station, and all support facilities.

20 In 1979 an MOU transferred management responsibility for New Melones Lake from the
21 USACE to Reclamation. From 1979 to the present, Reclamation has managed the
22 recreation facility at New Melones Lake. Replacement and upkeep of the recreation
23 facilities has been completed on an as-need basis to protect public health and safety and,
24 at times, to realize savings in operations and maintenance through updating the minimal
25 structures. Additionally Reclamation, through the efforts of county legislators and federal
26 representatives, has been successful in obtaining moneys to fund additional piecemeal
27 facilities, including campgrounds, a visitor center, and improvements to potable water
28 and wastewater systems.

29 **1.7 Existing Management Documents**

30 Decision documents that provide management guidance for the New Melones Lake Area
31 are described below.

1 **1.7.1 Reclamation Manual**

2 The Reclamation Manual (RCD TRMR-15) consists of a series of policies, directives,
3 and standards and delegations of authority. Collectively, these assign program
4 responsibility and authority and document Reclamation-wide methods of doing business.
5 All requirements in the Reclamation Manual are mandatory and constitute official
6 Reclamation policy. The Reclamation Manual also serves as a link to Reclamation’s
7 supplements to the US Department of the Interior and government-wide regulations, such
8 as the Federal Acquisition Regulations.

9 **1.7.2 New Melones Lake EIS (1972) (USACE 1972)**

10 This document is an analysis of environmental impacts resulting from filling New
11 Melones Lake and associated facilities. The EIS also documents baseline conditions at the
12 time of dam construction.

13 **1.7.3 New Melones Lake Area Master Plan (1976) (USACE and Reclamation**
14 **1976)**

15 This document contains decisions concerning land use allocations and basic resource
16 management guidelines for public lands and resources at New Melones Lake. Although
17 no life span was indicated for this document, much of the guidance is outdated and does
18 not reflect current federal policy. For many resource categories, this document does not
19 provide specific management guidance. Instead, it provides a very broad framework from
20 which Reclamation resource managers determine specific management guidance.

21 **1.7.4 Peoria Wildlife Management Area Environmental Assessment (EA)**
22 **(Reclamation 2007a)**

23 The Peoria Wildlife Management Area lies at the southern end of New Melones Lake and
24 is managed by Reclamation as mitigation for habitat lost when New Melones Dam and
25 Lake were built. The EA discloses environmental impacts from implementing an interim
26 resource management plan for this area as well as a road closure in this area.

27 Documents that provide management recommendations but that have not been formally
28 adopted are described below.

29 **1.7.5 New Melones Lake Fire Management Plan (Reclamation 2007b)**

30 This document identifies resource values and conditions pertaining to fire management at
31 New Melones Lake. It is included for analysis in the EIS section of this RMP/EIS and
32 will be finalized through the RMP process.

33 **1.7.6 New Melones Lake Draft RMP (Reclamation 1995)**

34 This document proposes sound management practices and principles at the New Melones
35 Lake Area to provide a balanced stewardship of the natural, cultural, and recreational

1 resources and the economic vitality of the surrounding communities. This document was
2 never completed due to funding constraints.

3 **1.7.7 Draft Vegetation Management Plan (Reclamation 1997)**

4 This document expands on the vegetation element within the draft RMP (Reclamation
5 1995) in order to document the plant communities within the plan area. It also
6 recommends specific management of vegetative communities to help Reclamation
7 achieve its vegetation goals at the New Melones Lake Area.

8 **1.7.8 Revised Draft Cave Management Plan (Reclamation 1996)**

9 This document identifies ways to manage and protect caves within the New Melones
10 Lake Area and updates information presented in the Draft Cave Management Plan of
11 1978 (BLM 1978).

12 **1.8 RMP/EIS Development**

13 This RMP/EIS is the result of a collaborative effort involving Reclamation, interested
14 members of the public, stakeholders in the outcome of the plan, and relevant resource
15 agencies. Input provided by these sources has been combined with guidance provided in
16 Reclamation's *Resource Management Plan Guidebook* (Reclamation 2003) in order to
17 determine, and continue, the most appropriate uses of Reclamation lands within the study
18 area, to explore methods to enhance and protect the resources found on those lands, to
19 identify or propose long-term resource protection programs, and to identify financially
20 feasible opportunities or partnerships to help decision makers manage lands and resources
21 within the study area.

22 **1.9 Management Constraints**

23 Constraints on the management of the New Melones Lake Area come in the form of
24 legislative control/authorization, economic resources, geography, and environmental
25 limitations. Economic and legal constraints for appropriate facility enhancements may be
26 mitigated by establishing agreements, concessions, or cost-share partnerships, if desired.
27 Geographical constraints are identified by the topography of the land and the location of
28 sensitive resources, which increase a need to establish a maximum carrying capacity.

29 **1.9.1 Legislative Authority**

30 Planning upgrades to facilities in the New Melones Lake Area triggers compliance with
31 the Rehabilitation Act of 1973 and the ADA of 1990 and 1995, which state that persons
32 with disabilities will be provided with access to federal government lands and facilities.

1 Other federal legislation that may be triggered as a result of actions proposed within this
2 RMP includes the CWA, the ESA, the NHPA, and NEPA.

3 **1.9.2 Economic Issues and Partnership Opportunities**

4 Reclamation works to ensure that any public management actions do not conflict with
5 authorized project purposes. Much of Reclamation's budget is dedicated to fulfilling its
6 mission of water storage and delivery; therefore, economic constraints are common in
7 restraining development of public use resources and habitat protection and enhancement
8 on most, if not all, Reclamation lands. The Reclamation Recreation Management Act of
9 1992, Title 28, which was passed in 1992 as an amendment to PL 89-72, requires a non-
10 federal partner to fund at least 50 percent of the development of recreational facilities or
11 at least 25 percent of fish and wildlife enhancements on Reclamation lands. A non-federal
12 partner must:

- 13 • Be a non-federal public entity;
- 14 • Be willing and capable of entering into a long-term agreement to develop, operate,
15 and maintain the recreation facilities and uses at the project area;
- 16 • Be capable of providing at least 50 percent of the cost of the project;
- 17 • Be able to provide up-front funding of 50 percent of the planning cost;
- 18 • Be able to provide services and facilities open to general public use; and
- 19 • Provide at least 50 percent of operation and maintenance costs.

20 This would allow Reclamation to partner with a state agency, such as California Boating
21 and Waterways, to develop boat ramps or the CDFG to enhance wetlands, for example.

22 Reclamation also has the option of considering whether entering into a contractual
23 agreement with one or more private commercial entities would assist it in managing the
24 resource. Such a partnership or concession would usually result in providing desired
25 services that Reclamation could not provide within its authority. A percentage of any
26 funds generated could be returned to Reclamation.

27 **1.9.3 Geographic Challenges**

28 Developing resources in the New Melones Lake Area may be limited by such factors as
29 soils, slope, wetlands, presence of sensitive plant or animal species or populations, or
30 inundation zones. Development should not occur on or near wetlands or sensitive species
31 habitat, in places prone to erosion, where soils cannot accommodate septic systems, or
32 where such development would encourage unauthorized use of sensitive areas.

1 **1.9.4 Environmental Stewardship**

2 Because of regional and geographical variations, each Reclamation study area offers a
3 unique set of opportunities and challenges for resource enhancement and protection and
4 may limit facility expansions or development. In certain areas, a particular resource found
5 on Reclamation land may invite the participation of a particular agency or group as a
6 managing partner or a partner in research or stewardship. In other areas, proximity to a
7 certain user group or institution may provide the impetus for the involvement of that
8 group.

9 **1.10 Public Involvement**

10 Public involvement is a critical element in developing the RMP. Reclamation’s goal is to
11 gain input from a cross section of the user public. Reclamation held several public
12 scoping meetings and alternatives development workshops throughout 2007 to solicit
13 issues and concerns and to develop alternatives to be analyzed in the RMP. In addition,
14 Reclamation developed a mailing list (and accompanying database), produced and
15 distributed newsletters, and developed a New Melones Lake Area Web site to help
16 disseminate both New Melones Lake Area- and RMP-related information.

17 In order to both educate the public about the RMP process for the New Melones Lake
18 Area and to solicit its input, Reclamation held public scoping meetings in three locations
19 within the project planning area during the last week of January 2007. Most comments
20 focused on access, biological resources, facilities, and recreation. In late September 2007,
21 Reclamation held two alternatives development workshops to obtain further input on
22 possible management actions and opportunities for the New Melones Lake Area. Open
23 house meetings were held in September 2008 to solicit public input on Draft RMP/EIS
24 Chapters 1-3 (currently Chapters 1-5). Reclamation used the information collected from
25 these gatherings, along with additional comments submitted during the planning process,
26 to develop the draft planning proposals. Public input and participation helps ensure that
27 the plan will meet the needs of the stakeholders, while providing for development and
28 management of the New Melones Lake Area. Public involvement is discussed in greater
29 detail in Chapter 7 of the EIS.

30 **1.10.1 Planning Issues**

31 Issue identification is the first step of the planning process. A planning issue is a
32 significant concern, need, resource use, or development and protection opportunity
33 relating to resource management or uses on public lands that can be addressed in a variety
34 of ways. The criteria used to identify issues include determining whether the effects
35 would result in the following:

- 36 • Approach or exceed standards or a threshold;
- 37 • Substantially change a resource;

- 1 • Be controversial;
- 2 • Offer a wide range of opportunities; or
- 3 • Cause disagreement regarding their environmental impact.

4 These issues drove the formulation of the RMP alternatives, and addressing them has
5 resulted in a range of management options presented in four alternatives (Chapter 2).
6 Each fully developed alternative (Chapter 3) represents a different land use plan that
7 addresses or resolves the identified planning issues in different ways. While other
8 concerns are addressed in the RMP, management related to them may or may not change
9 by alternative.

10 The following issue statements were developed to summarize the concerns raised by the
11 public during the scoping process and by Reclamation during project planning. The issue
12 statements are designed to state concisely those issues that appear to be of most concern
13 to the public and to Reclamation staff and to encompass the range of scoping comments.
14 The issue statements below reflect planning topics that Reclamation will address when
15 creating the goals and management actions identified in Chapters 2 and 3. (The issues
16 statements are listed in the order in which they were developed, and their position within
17 the list does not reflect priority.)

- 18 *1. How will Reclamation improve access to the management area while protecting*
19 *resources and addressing logistical and financial challenges?*
- 20
- 21 *2. How will Reclamation protect sensitive resources while accommodating increasing*
22 *numbers of visitors with an expanding range of interests?*
- 23
- 24 *3. How will Reclamation enhance fish and wildlife habitats and other natural*
25 *resources?*
- 26
- 27 *4. What types of recreational activities will Reclamation manage for in the New*
28 *Melones Lake Area?*
- 29
- 30 *5. How can Reclamation provide recreation opportunities and services without*
31 *diminishing the quality of the resources?*
- 32
- 33 *6. How can Reclamation optimize a fee program in order to enhance visitor services*
34 *and protect the resources?*
- 35
- 36 *7. How can Reclamation provide adequate law enforcement to increase visitor safety*
37 *and reduce illegal activities?*
- 38
- 39 *8. What Reclamation management strategies will be used to identify and implement*
40 *necessary changes in facilities or infrastructure?*
- 41

1 *9. What Reclamation management strategies will be used to protect public health and*
2 *safety?*

3

4 *10. How can Reclamation foster positive relationships with neighboring landowners*
5 *and communities while meeting Reclamation's management commitments?*

6