

Figure 3.12-31
UPPER RIVER KEY VIEWPOINTS
AND PHOTO DIRECTIONS
 FISH PASSAGE IMPROVEMENT PROJECT
 RED BLUFF DIVERSION DAM EIS/EIR



FIGURE 3.12-32A
VIEW FROM VIEWPOINT #13
GATES-OUT CONDITION



FIGURE 3.12-32B
VIEW FROM VIEWPOINT #13
GATES-IN CONDITION



FIGURE 3.12-33A
VIEW FROM VIEWPOINT #14, PHOTO 1
GATES-OUT CONDITION



FIGURE 3.12-33B
VIEW FROM VIEWPOINT #14, PHOTO 1
GATES-IN CONDITION



FIGURE 3.12-34A
VIEW FROM VIEWPOINT #14, PHOTO 2
GATES-OUT CONDITION



FIGURE 3.12-34B
VIEW FROM VIEWPOINT #14, PHOTO 2
GATES-IN CONDITION



FIGURE 3.12-35A
VIEW FROM VIEWPOINT #15
GATES-OUT CONDITION



FIGURE 3.12-35B
VIEW FROM VIEWPOINT #15
GATES-IN CONDITION



BEFORE PROJECT



AFTER PROJECT

FIGURE 3.12-36
BEFORE AND AFTER VIEWS OF MILL
SITE PUMP STATION AND CONVEYANCE
FACILITIES FROM VIEWPOINT #1
FISH PASSAGE IMPROVEMENT PROJECT
RED BLUFF DIVERSION DAM EIS/EIR



BEFORE PROJECT



AFTER PROJECT

FIGURE 3.12-37
BEFORE AND AFTER VIEWS OF LEFT BANK
FISH LADDER AWS INTAKE FROM VIEWPOINT #5
FISH PASSAGE IMPROVEMENT PROJECT
RED BLUFF DIVERSION DAM EIS/EIR



BEFORE PROJECT



AFTER PROJECT

FIGURE 3.12-38
BEFORE AND AFTER VIEWS OF
BYPASS CHANNEL FROM VIEWPOINT #1
FISH PASSAGE IMPROVEMENT PROJECT
RED BLUFF DIVERSION DAM EIS/EIR



BEFORE PROJECT



AFTER PROJECT

FIGURE 3.12-39
BEFORE AND AFTER VIEWS OF
BYPASS CHANNEL FROM VIEWPOINT #4
FISH PASSAGE IMPROVEMENT PROJECT
RED BLUFF DIVERSION DAM EIS/EIR



BEFORE PROJECT



AFTER PROJECT

FIGURE 3.12-40
BEFORE AND AFTER VIEWS OF
BYPASS CHANNEL FROM VIEWPOINT #2
FISH PASSAGE IMPROVEMENT PROJECT
RED BLUFF DIVERSION DAM EIS/EIR

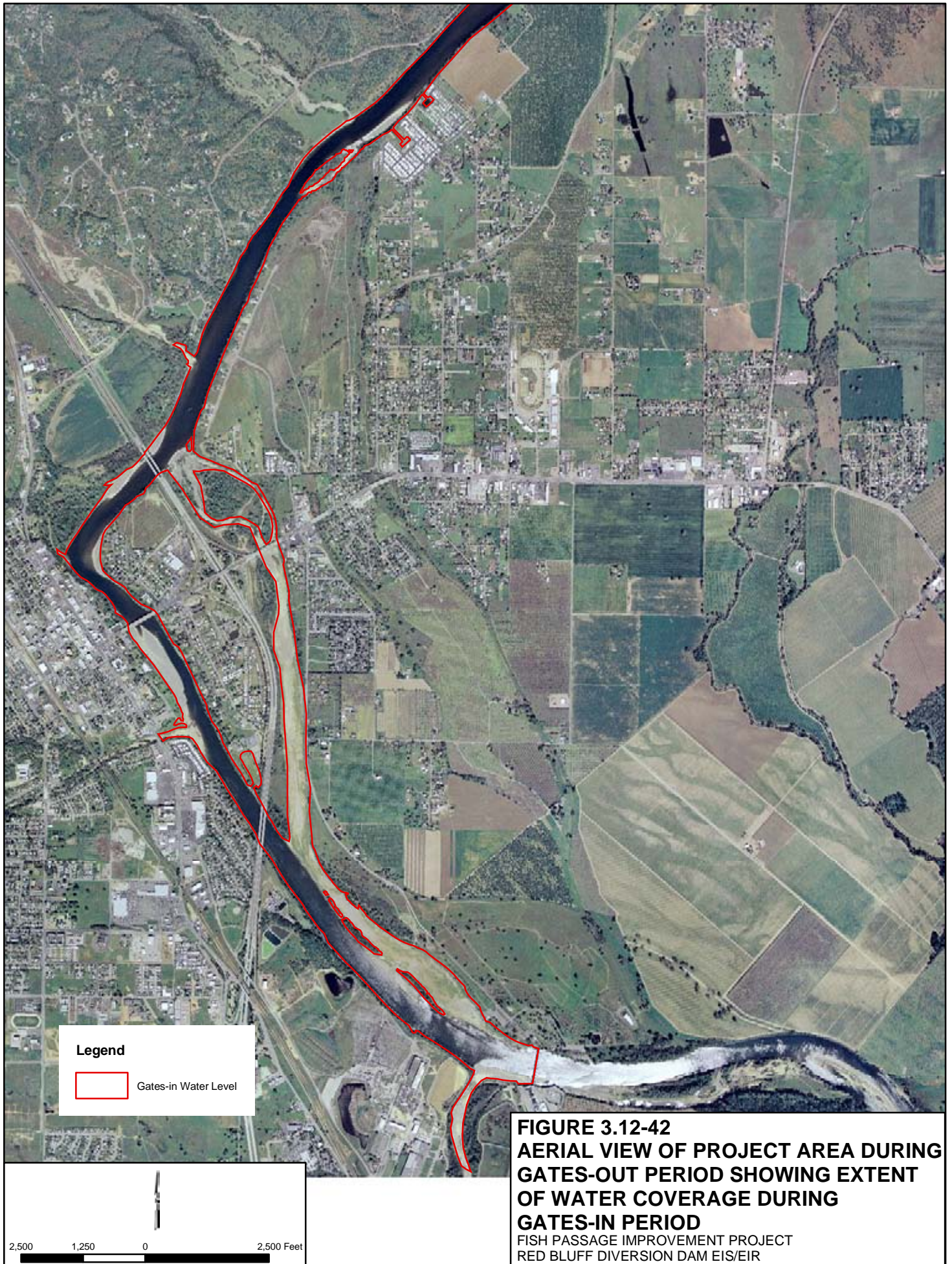


BEFORE PROJECT



AFTER PROJECT

FIGURE 3.12-41
BEFORE AND AFTER VIEWS OF
BYPASS CHANNEL FROM VIEWPOINT #3
FISH PASSAGE IMPROVEMENT PROJECT
RED BLUFF DIVERSION DAM EIS/EIR



Legend

 Gates-in Water Level

FIGURE 3.12-42
AERIAL VIEW OF PROJECT AREA DURING
GATES-OUT PERIOD SHOWING EXTENT
OF WATER COVERAGE DURING
GATES-IN PERIOD
 FISH PASSAGE IMPROVEMENT PROJECT
 RED BLUFF DIVERSION DAM EIS/EIR

2,500 1,250 0 2,500 Feet