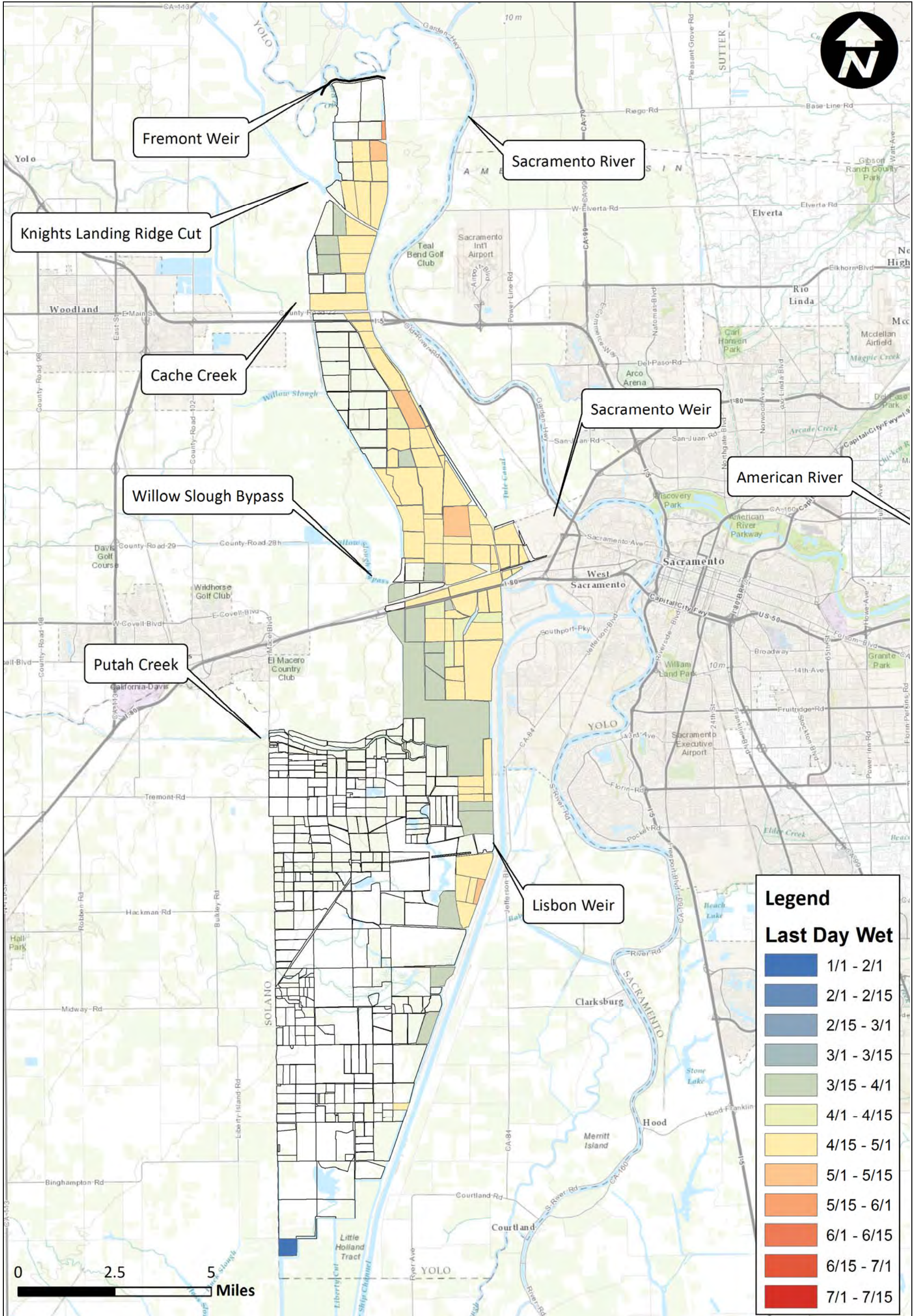


Notes:





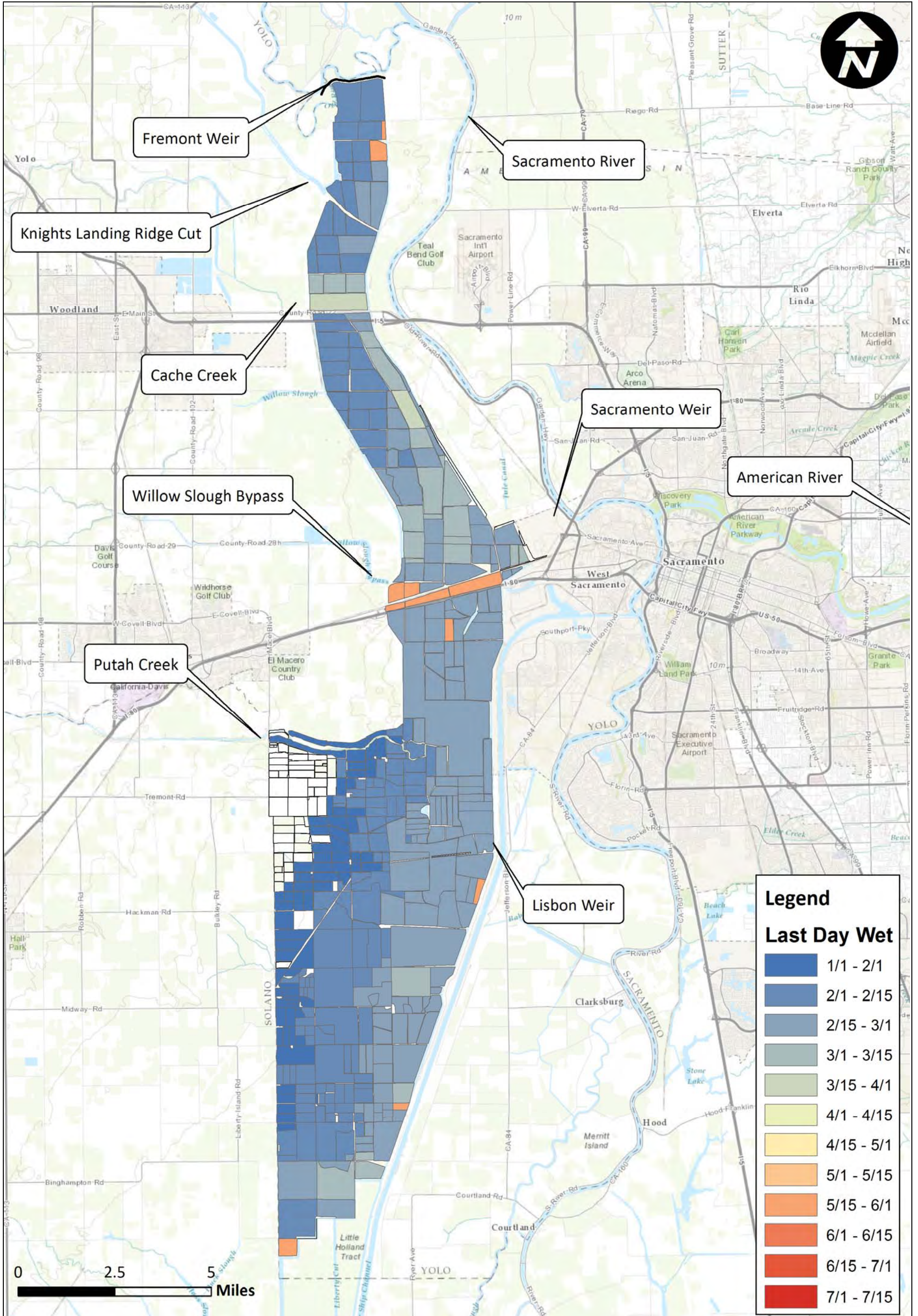
Notes:



Prepared for DWR

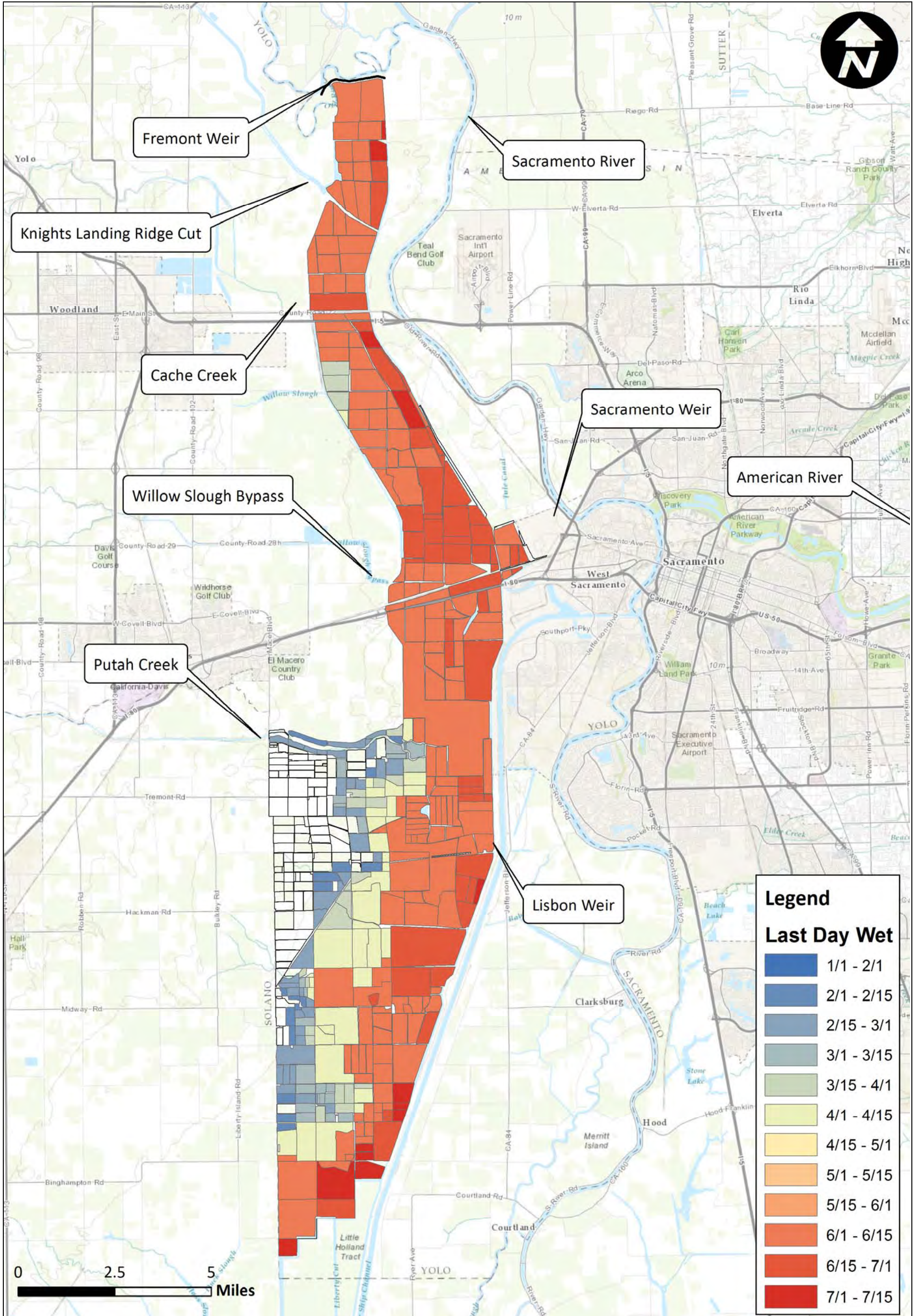
Created By: RDJ

Yolo Bypass Salmonid Habitat Restoration and Fish Passage
Last Day Wet Fremont Large Channel 2012
Figure F64



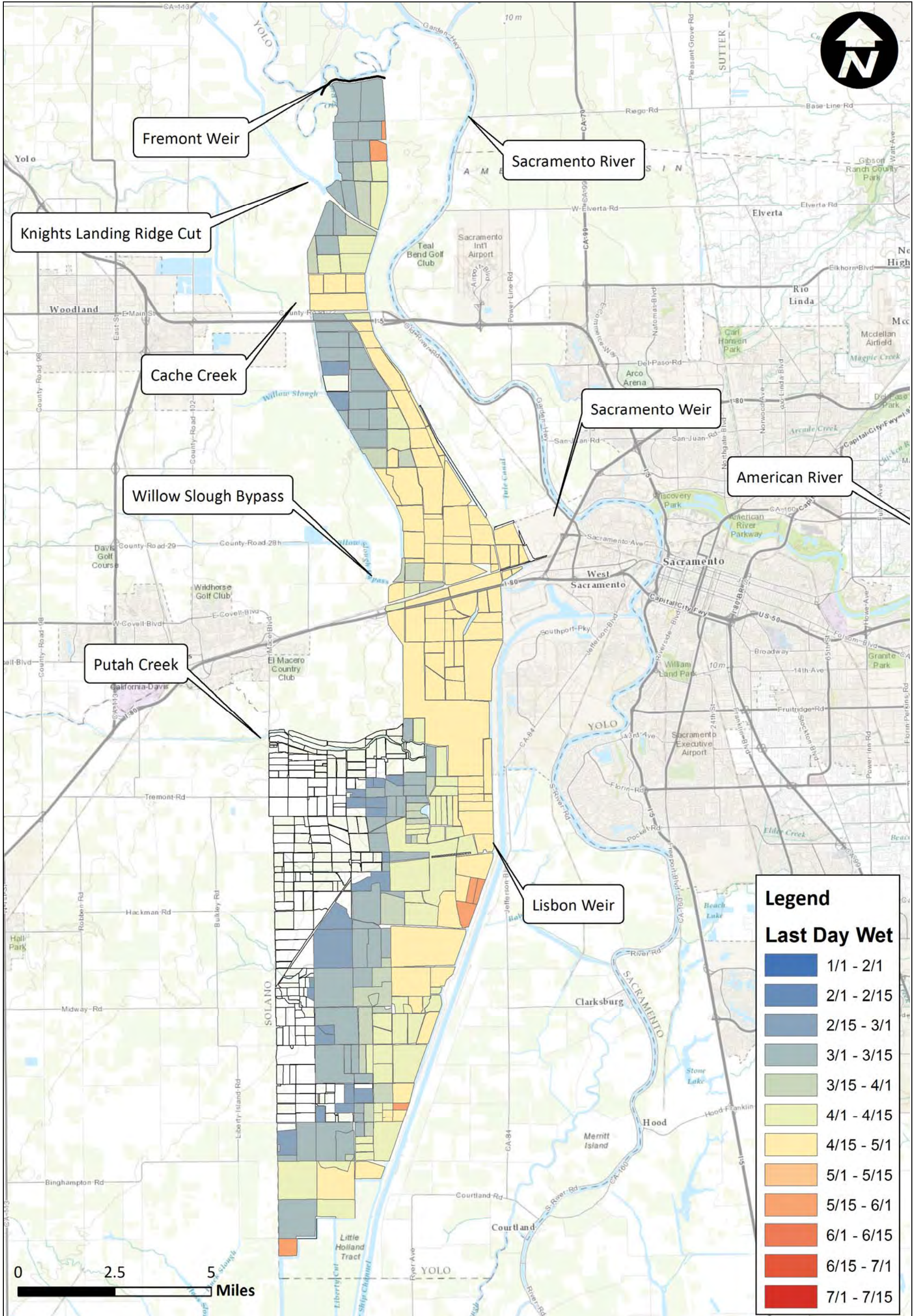
Notes:





Notes:





Legend

Last Day Wet

Dark Blue	1/1 - 2/1
Medium Blue	2/1 - 2/15
Light Blue	2/15 - 3/1
Teal	3/1 - 3/15
Light Green	3/15 - 4/1
Yellow-Green	4/1 - 4/15
Yellow	4/15 - 5/1
Light Orange	5/1 - 5/15
Orange	5/15 - 6/1
Dark Orange	6/1 - 6/15
Red-Orange	6/15 - 7/1
Red	7/1 - 7/15

Notes:

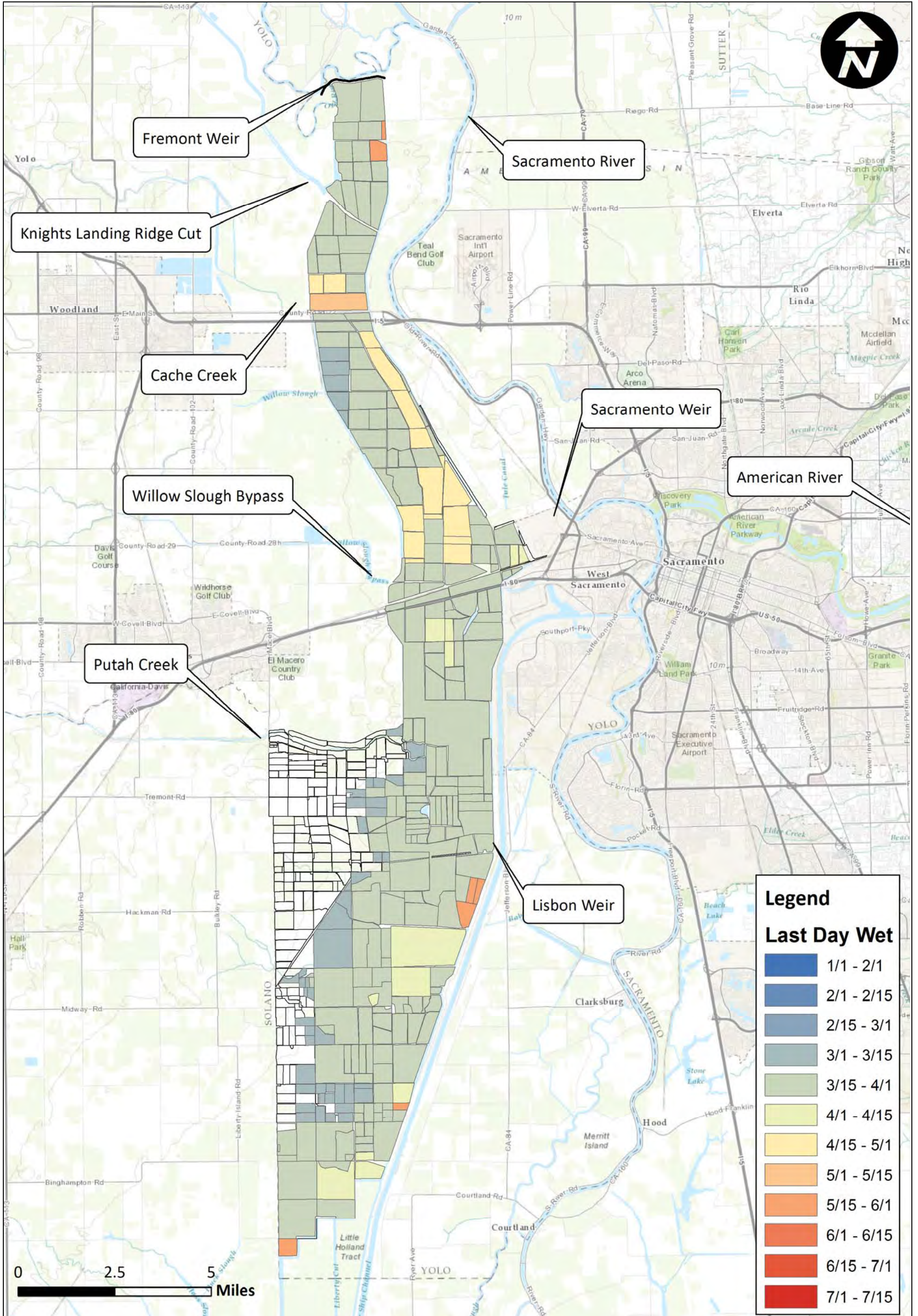


Yolo Bypass Salmonid Habitat Restoration and Fish Passage
Last Day Wet Sacramento Weir Channel 1999

Prepared for DWR

Created By: RDJ

Figure F67



Notes:

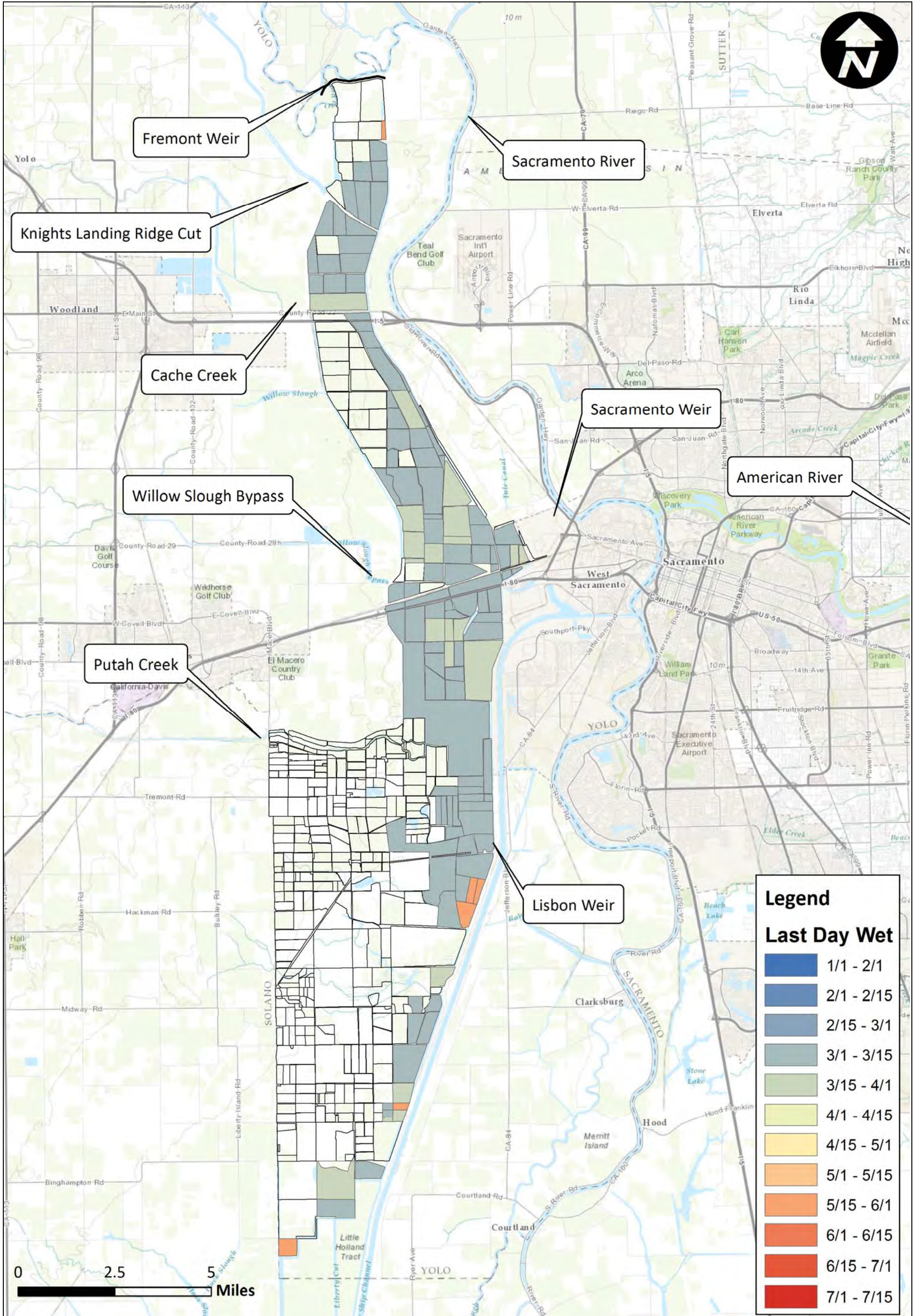


Yolo Bypass Salmonid Habitat Restoration and Fish Passage
Last Day Wet Sacramento Weir Channel 2000

Prepared for DWR

Created By: RDJ

Figure F68



Legend

Last Day Wet

Dark Blue	1/1 - 2/1
Medium Blue	2/1 - 2/15
Light Blue	2/15 - 3/1
Teal	3/1 - 3/15
Light Green	3/15 - 4/1
Yellow-Green	4/1 - 4/15
Yellow	4/15 - 5/1
Light Orange	5/1 - 5/15
Orange	5/15 - 6/1
Dark Orange	6/1 - 6/15
Red-Orange	6/15 - 7/1
Red	7/1 - 7/15

Notes:

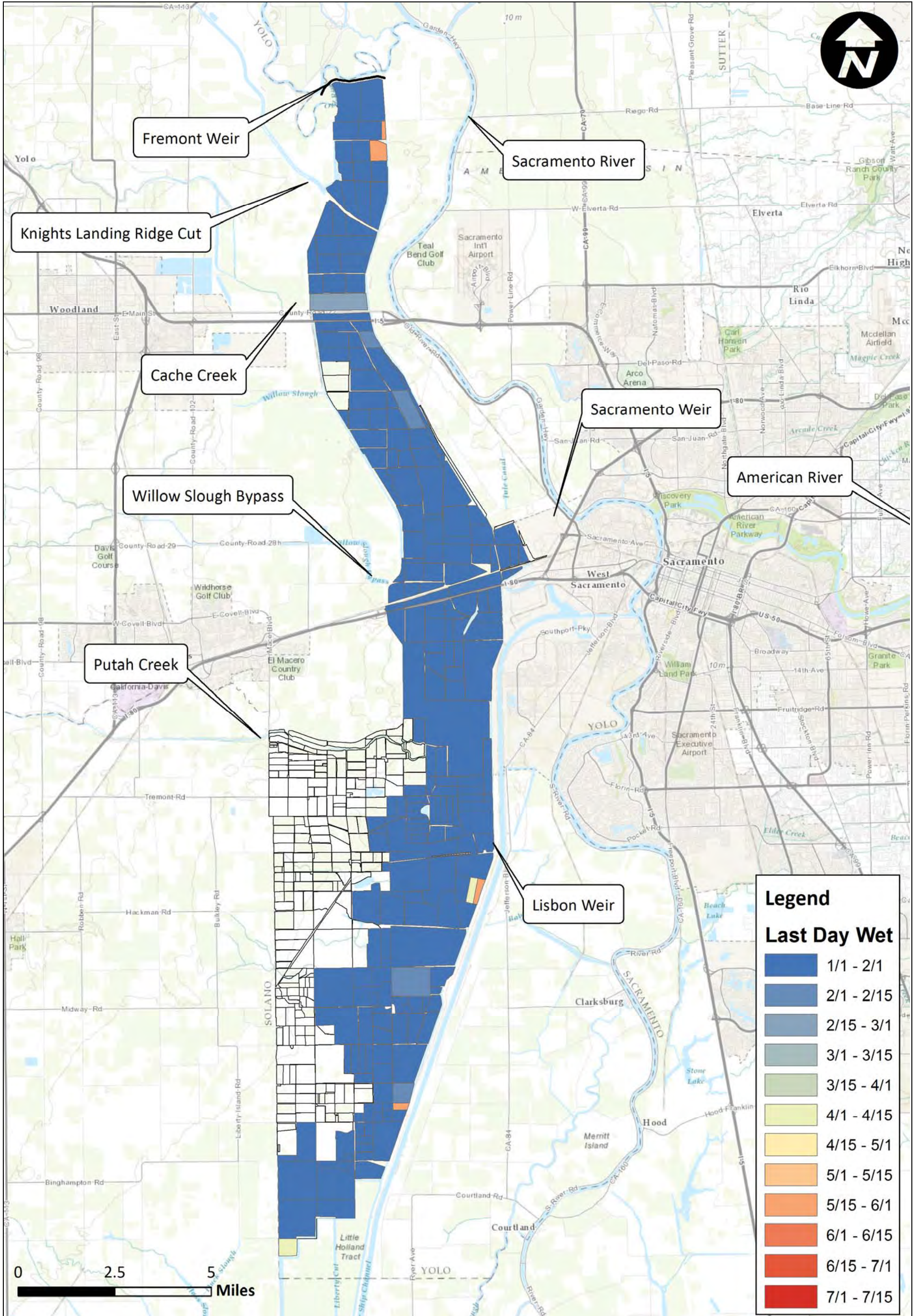


Yolo Bypass Salmonid Habitat Restoration and Fish Passage
Last Day Wet Sacramento Weir Channel 2001

Prepared for DWR

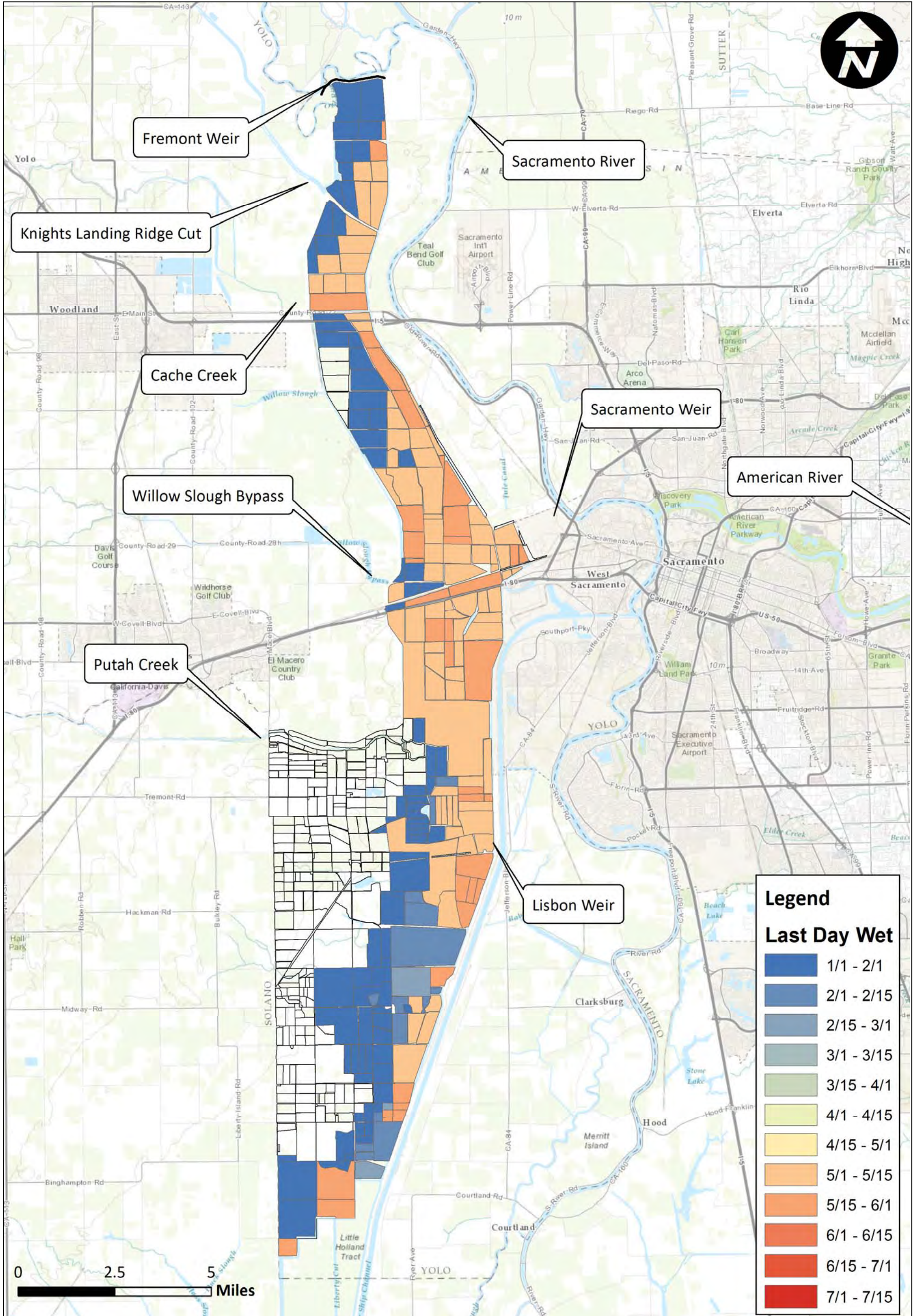
Created By: RDJ

Figure F69



Notes:





Legend

Last Day Wet

Dark Blue	1/1 - 2/1
Blue	2/1 - 2/15
Light Blue	2/15 - 3/1
Teal	3/1 - 3/15
Green	3/15 - 4/1
Light Green	4/1 - 4/15
Yellow	4/15 - 5/1
Orange	5/1 - 5/15
Light Orange	5/15 - 6/1
Red-Orange	6/1 - 6/15
Red	6/15 - 7/1
Dark Red	7/1 - 7/15

Notes:

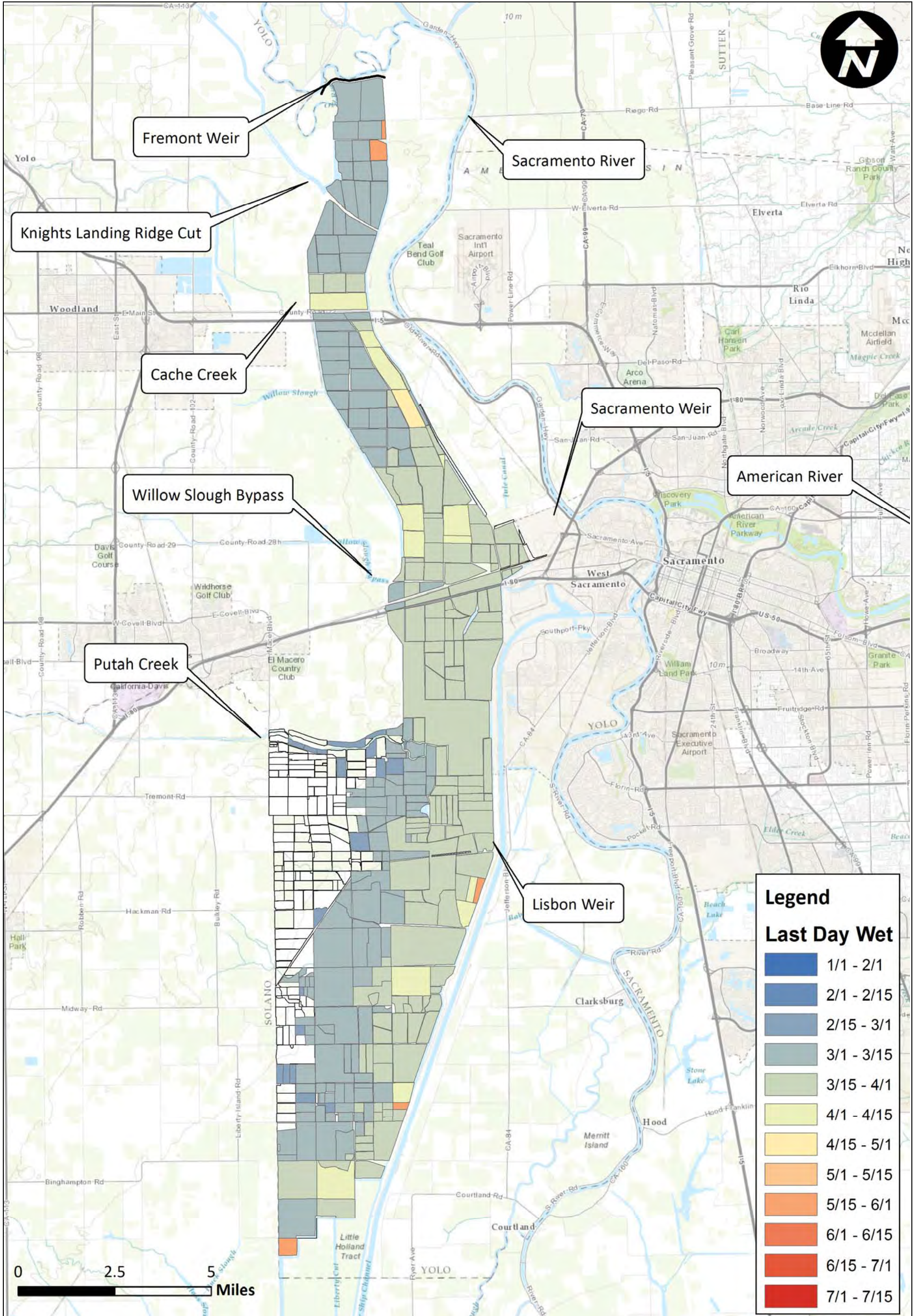


Yolo Bypass Salmonid Habitat Restoration and Fish Passage
Last Day Wet Sacramento Weir Channel 2003

Prepared for DWR

Created By: RDJ

Figure F71



Notes:

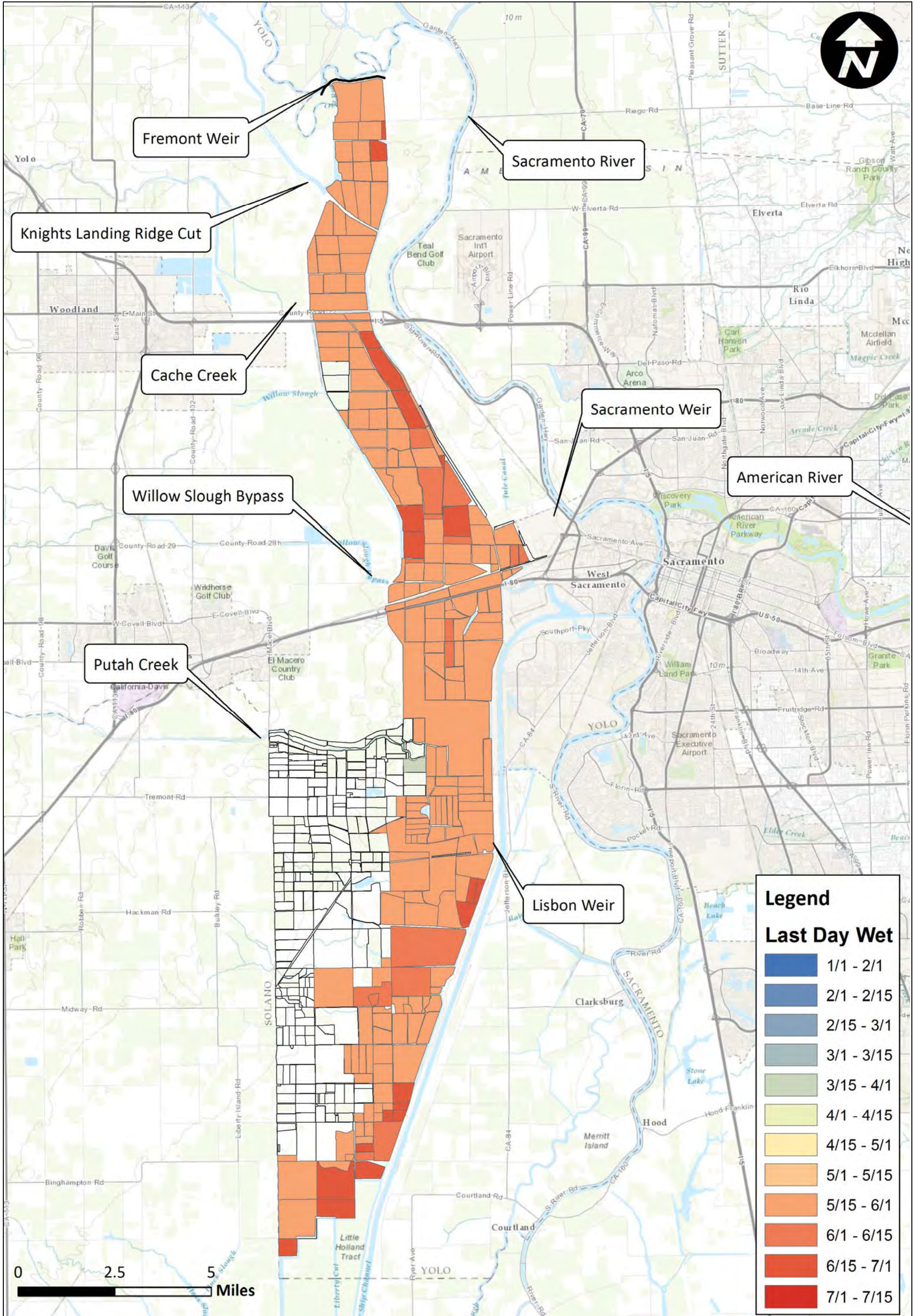


Yolo Bypass Salmonid Habitat Restoration and Fish Passage
Last Day Wet Sacramento Weir Channel 2004

Prepared for DWR

Created By: RDJ

Figure F72



Legend

Last Day Wet

Dark Blue	1/1 - 2/1
Blue	2/1 - 2/15
Light Blue	2/15 - 3/1
Teal	3/1 - 3/15
Green	3/15 - 4/1
Light Green	4/1 - 4/15
Yellow	4/15 - 5/1
Orange	5/1 - 5/15
Light Orange	5/15 - 6/1
Red-Orange	6/1 - 6/15
Red	6/15 - 7/1
Dark Red	7/1 - 7/15

Notes:

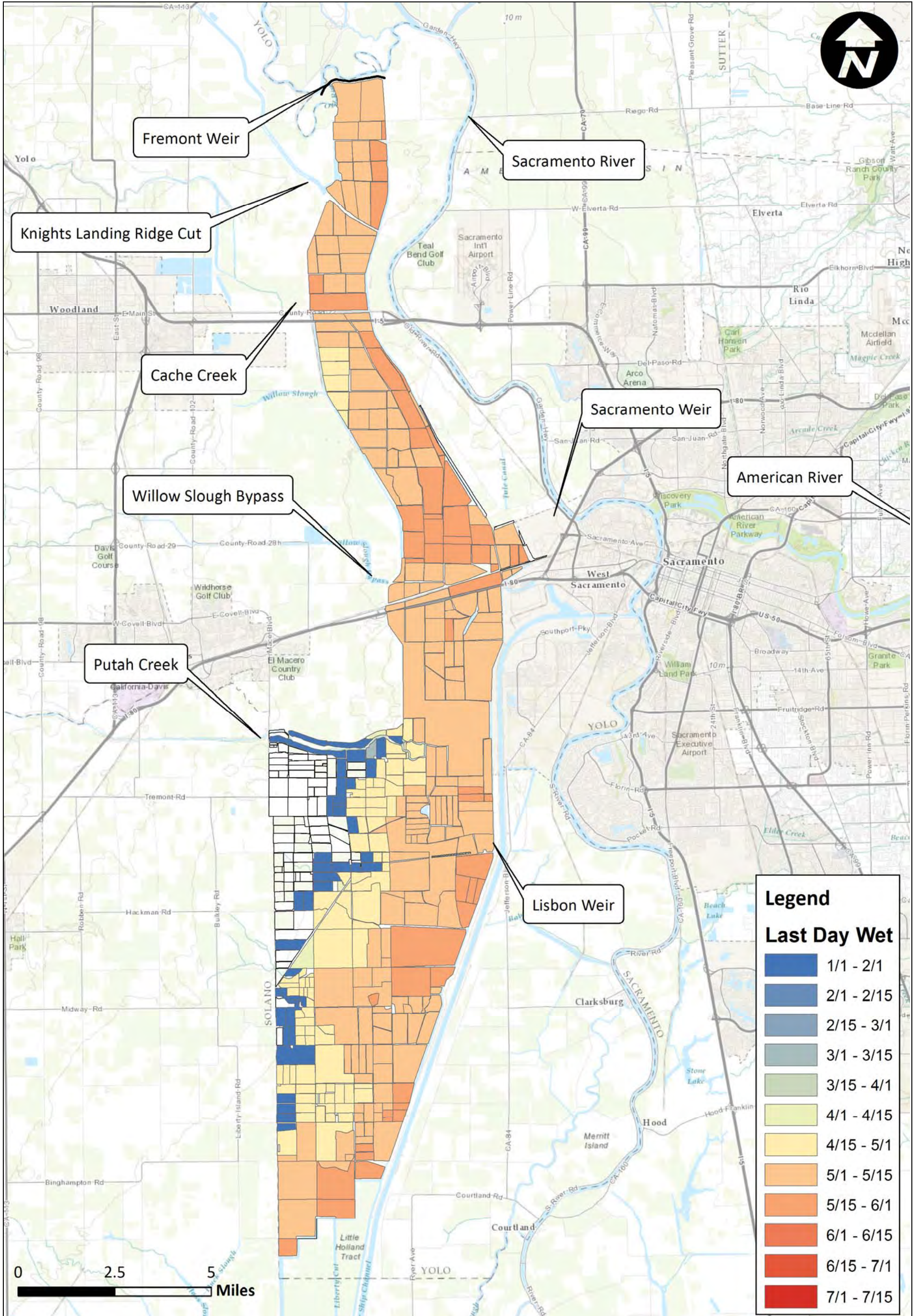


Yolo Bypass Salmonid Habitat Restoration and Fish Passage
Last Day Wet Sacramento Weir Channel 2005

Prepared for DWR

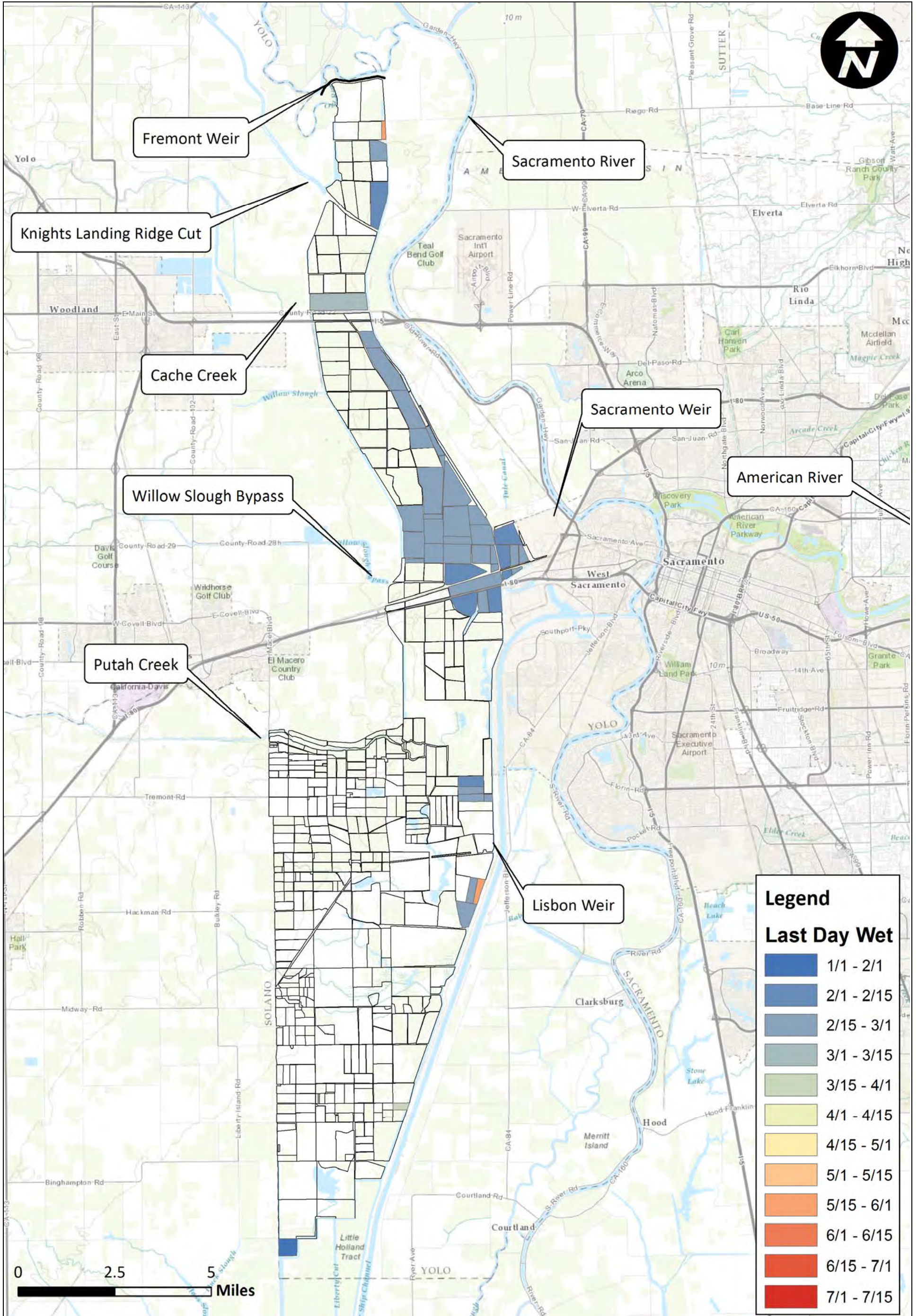
Created By: RDJ

Figure F73



Notes:





Legend

Last Day Wet

Dark Blue	1/1 - 2/1
Medium Blue	2/1 - 2/15
Light Blue	2/15 - 3/1
Very Light Blue	3/1 - 3/15
Light Green	3/15 - 4/1
Yellow-Green	4/1 - 4/15
Yellow	4/15 - 5/1
Light Orange	5/1 - 5/15
Orange	5/15 - 6/1
Dark Orange	6/1 - 6/15
Red-Orange	6/15 - 7/1
Red	7/1 - 7/15

Notes:

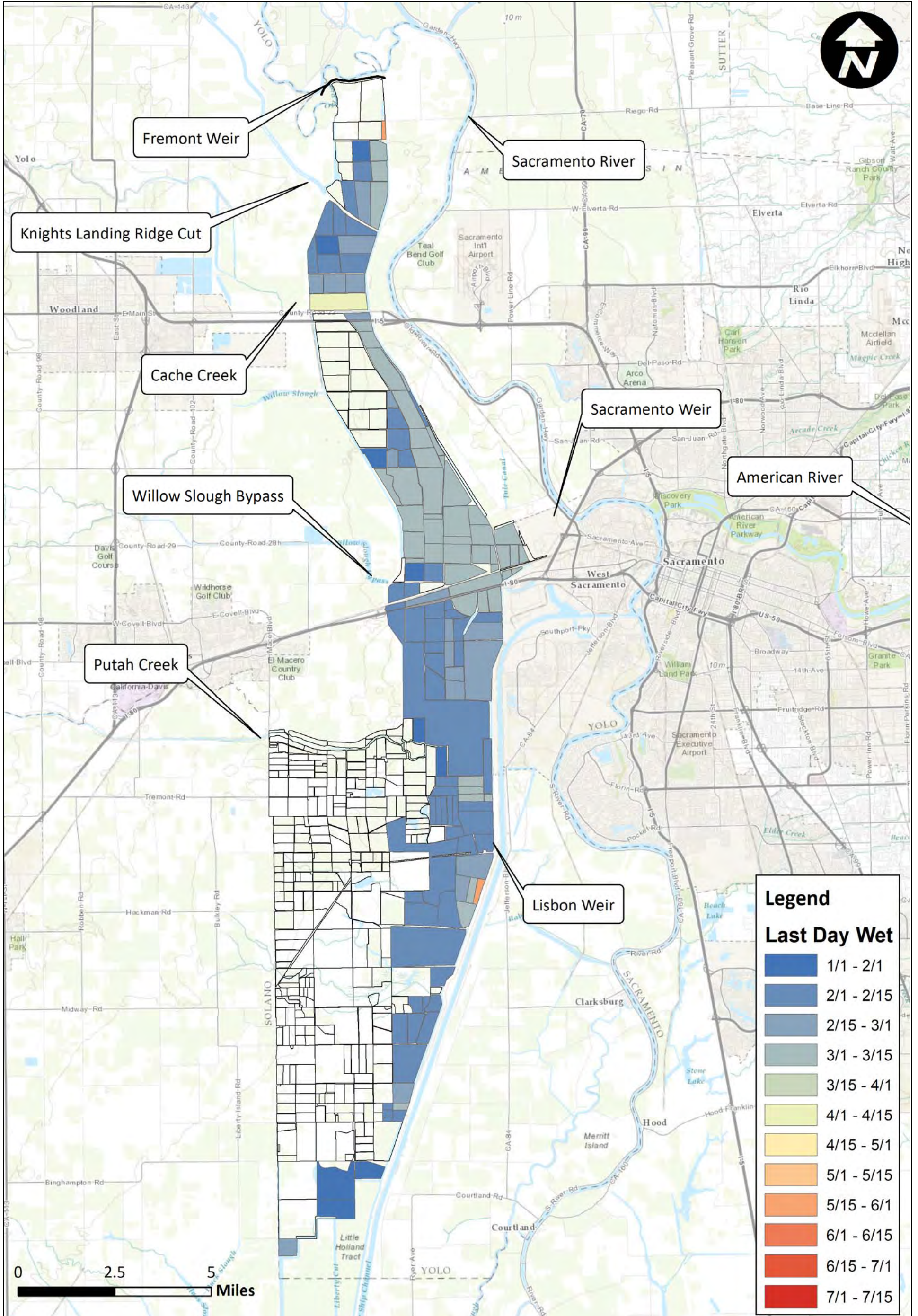


Yolo Bypass Salmonid Habitat Restoration and Fish Passage
Last Day Wet Sacramento Weir Channel 2007

Prepared for DWR

Created By: RDJ

Figure F75



Legend

Last Day Wet

Dark Blue	1/1 - 2/1
Medium Blue	2/1 - 2/15
Light Blue	2/15 - 3/1
Very Light Blue	3/1 - 3/15
Light Green	3/15 - 4/1
Yellow-Green	4/1 - 4/15
Yellow	4/15 - 5/1
Light Orange	5/1 - 5/15
Orange	5/15 - 6/1
Dark Orange	6/1 - 6/15
Red-Orange	6/15 - 7/1
Red	7/1 - 7/15

Notes:

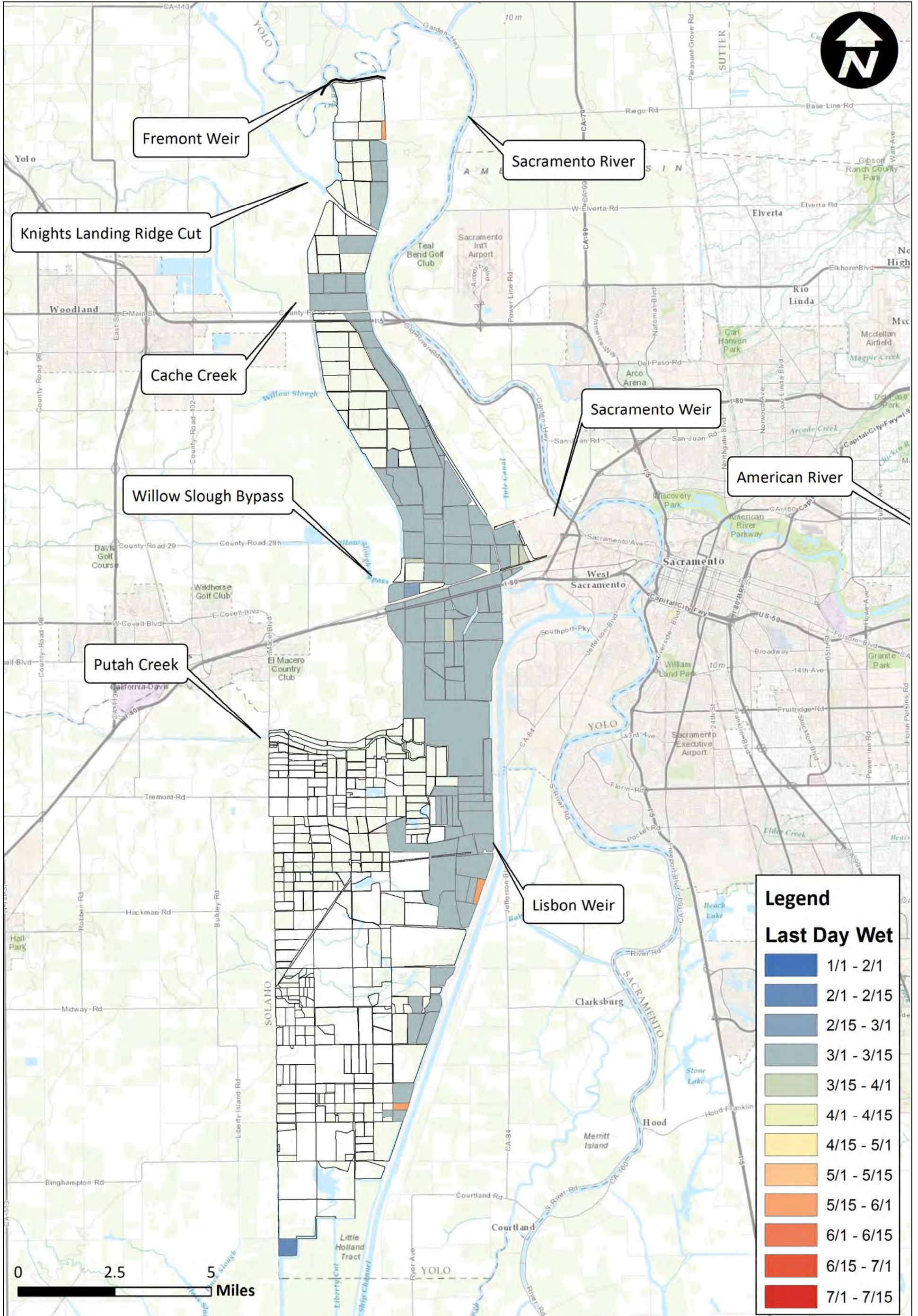


Yolo Bypass Salmonid Habitat Restoration and Fish Passage
Last Day Wet Sacramento Weir Channel 2008

Prepared for DWR

Created By: RDJ

Figure F76



Legend

Last Day Wet

Dark Blue	1/1 - 2/1
Medium Blue	2/1 - 2/15
Light Blue	2/15 - 3/1
Teal	3/1 - 3/15
Light Green	3/15 - 4/1
Yellow-Green	4/1 - 4/15
Yellow	4/15 - 5/1
Light Orange	5/1 - 5/15
Orange	5/15 - 6/1
Dark Orange	6/1 - 6/15
Red-Orange	6/15 - 7/1
Red	7/1 - 7/15

Notes:



Yolo Bypass Salmonid Habitat Restoration and Fish Passage
Last Day Wet Sacramento Weir Channel 2009

Prepared for DWR

Created By: RDJ

Figure F77