

Notes: TUFLOW model results showing 2D inundation patterns (at specified time stamp) for existing and 4/30 gate closure (left panes), Yolo Bypass inflows (upper right panes), and wetted area for all five gate closures (lower right pane). The vertical bar in the right panes corresponds to the time stamp below the left panes, whereby the blue hatching represents 4/30 gate closure conditions as overlain by the grey hatching representing existing conditions.



Yolo Bypass Salmonid Habitat Restoration and Fish Passage

Wetted Area Comparison for WY 2012 for SacW

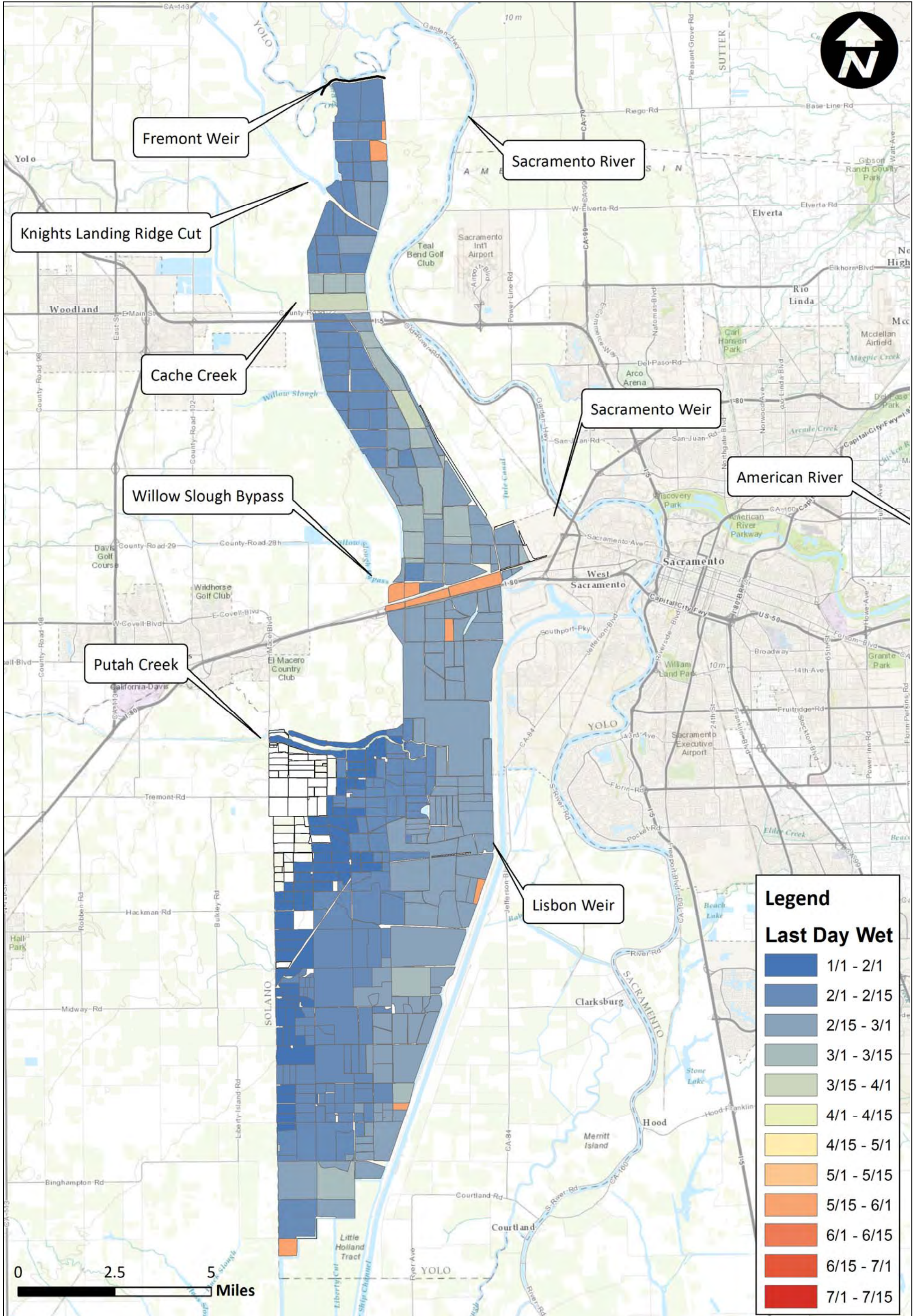
Prepared for DWR

Created By: SJB

Figure E64

Appendix F

Complete Last Day Wet (LDW) Results



Notes:

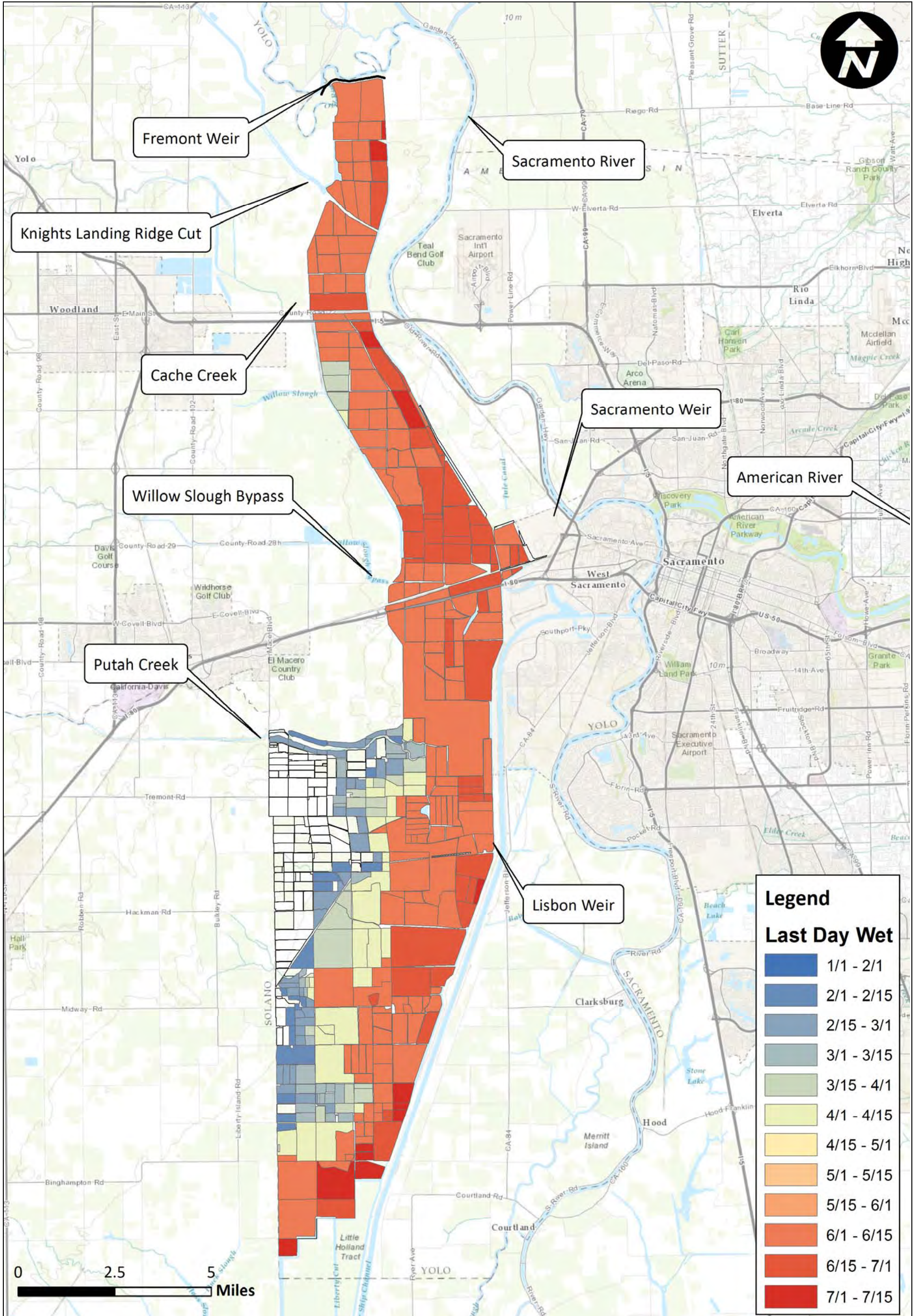


Yolo Bypass Salmonid Habitat Restoration and Fish Passage
Last Day Wet Existing Conditions 1997

Prepared for DWR

Created By: RDJ

Figure F1



Notes:

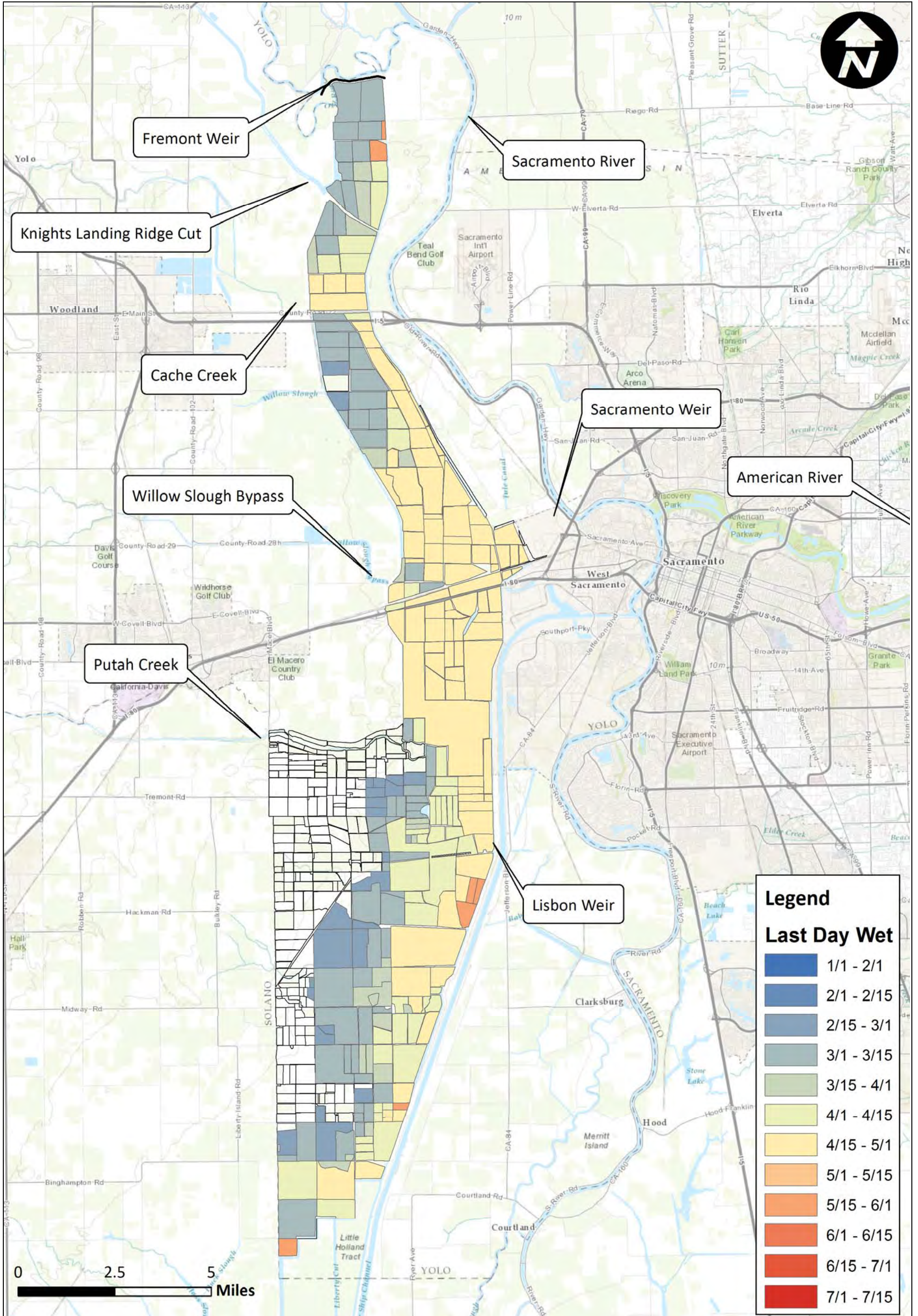


Yolo Bypass Salmonid Habitat Restoration and Fish Passage
Last Day Wet Existing Conditions 1998

Prepared for DWR

Created By: RDJ

Figure F2



Notes:

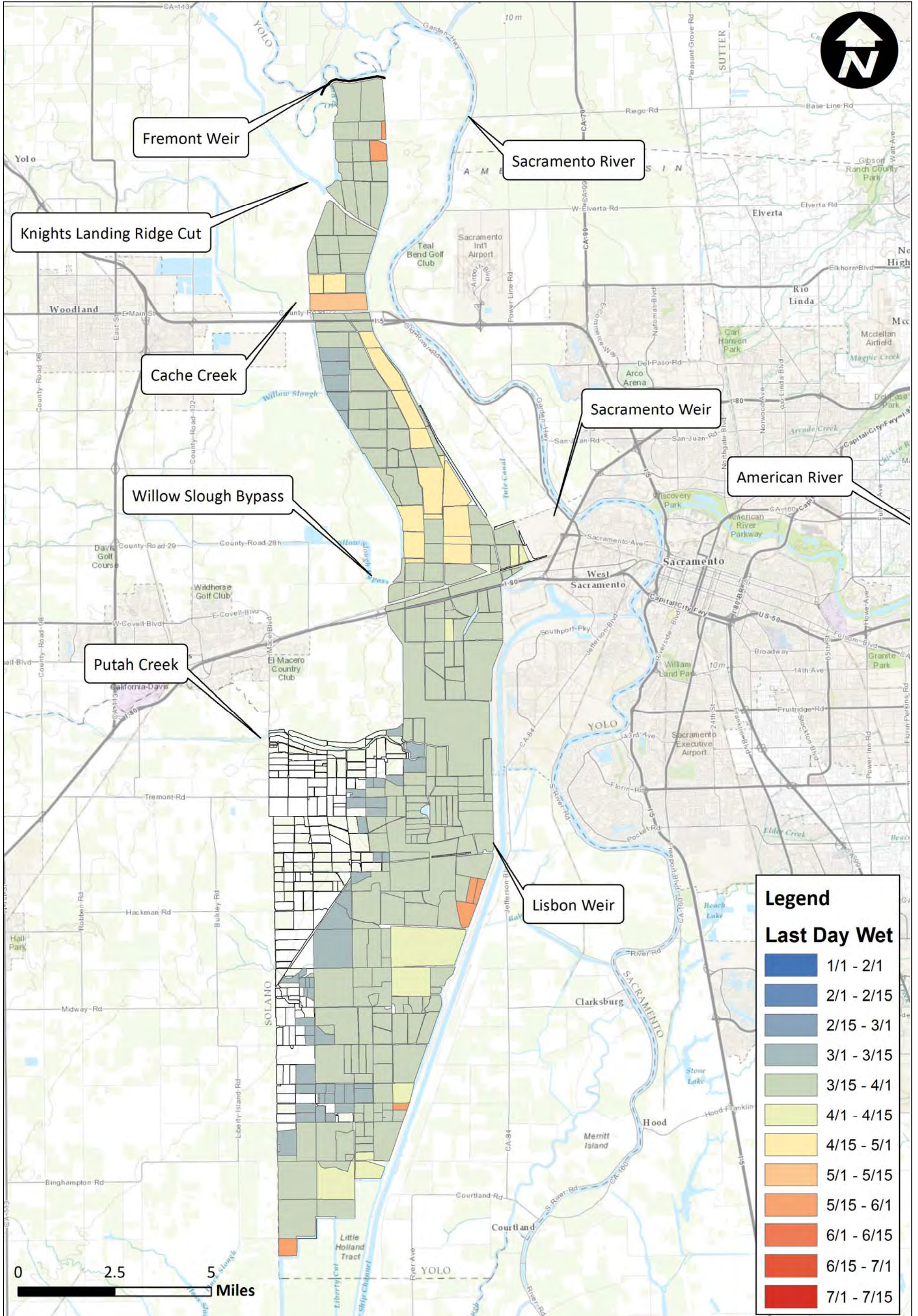


Yolo Bypass Salmonid Habitat Restoration and Fish Passage
Last Day Wet Existing Conditions 1999

Prepared for DWR

Created By: RDJ

Figure F3



Notes:

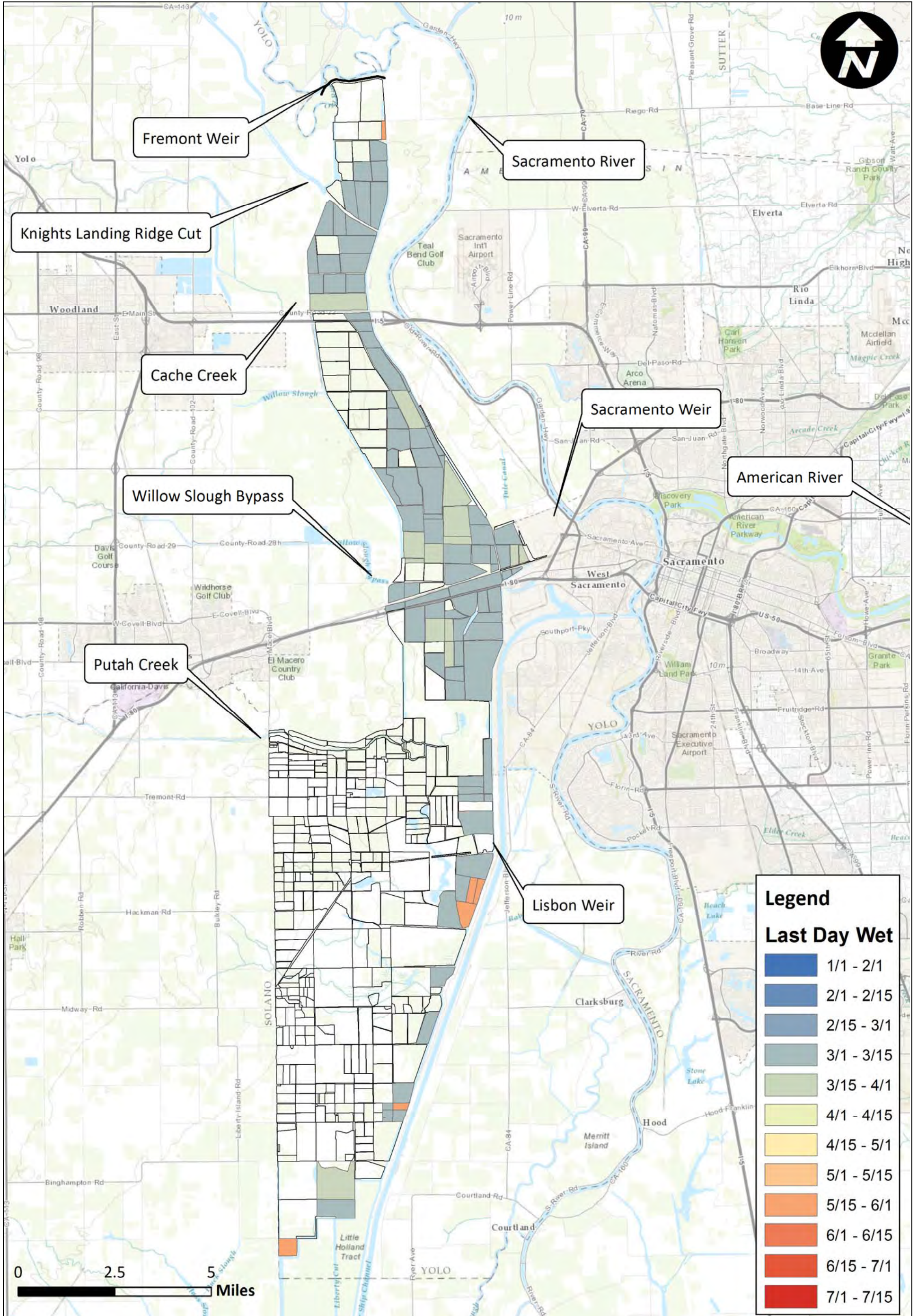


Yolo Bypass Salmonid Habitat Restoration and Fish Passage
Last Day Wet Existing Conditions 2000

Prepared for DWR

Created By: RDJ

Figure F4



Notes:

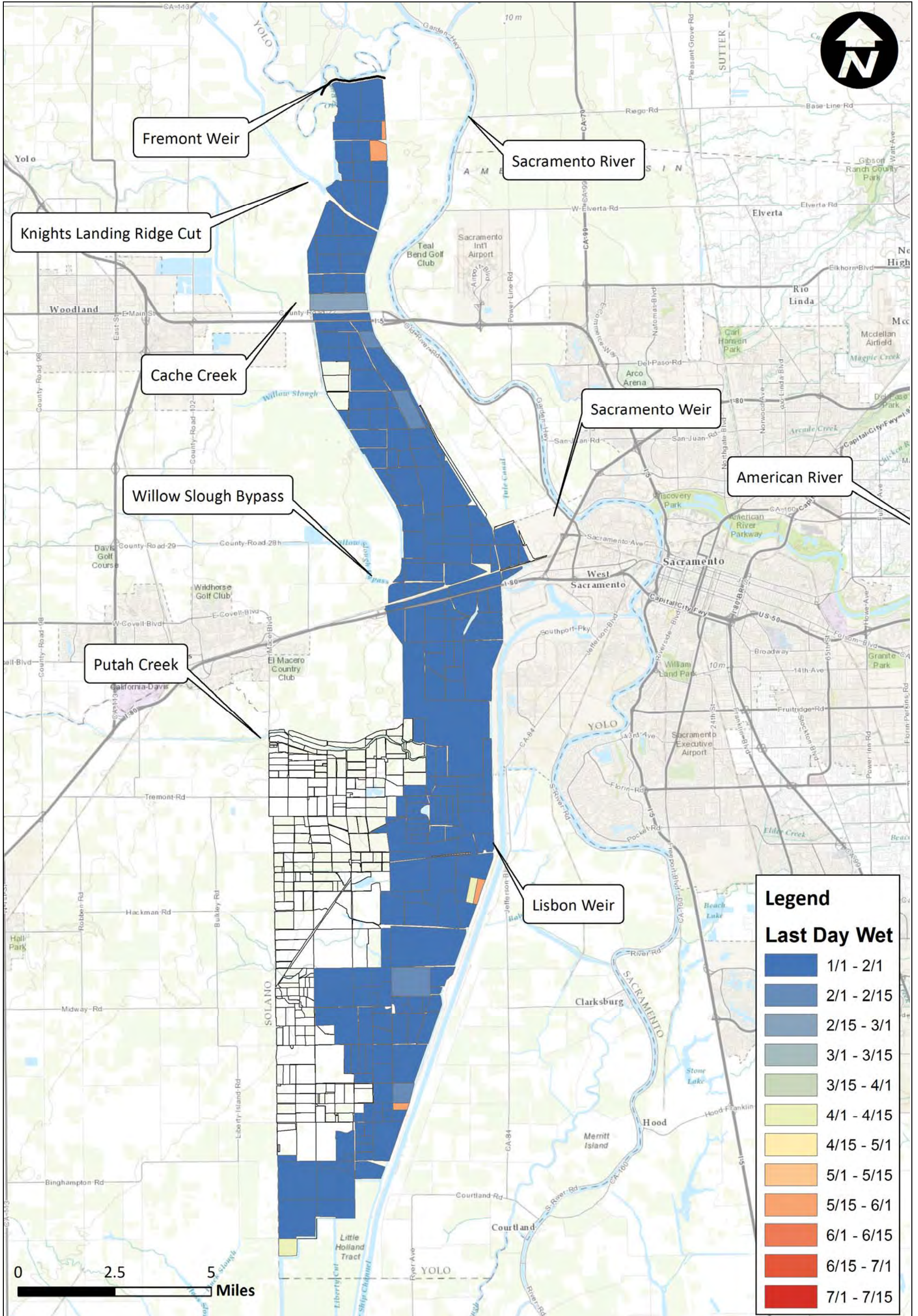


Yolo Bypass Salmonid Habitat Restoration and Fish Passage
Last Day Wet Existing Conditions 2001

Prepared for DWR

Created By: RDJ

Figure F5



Notes:

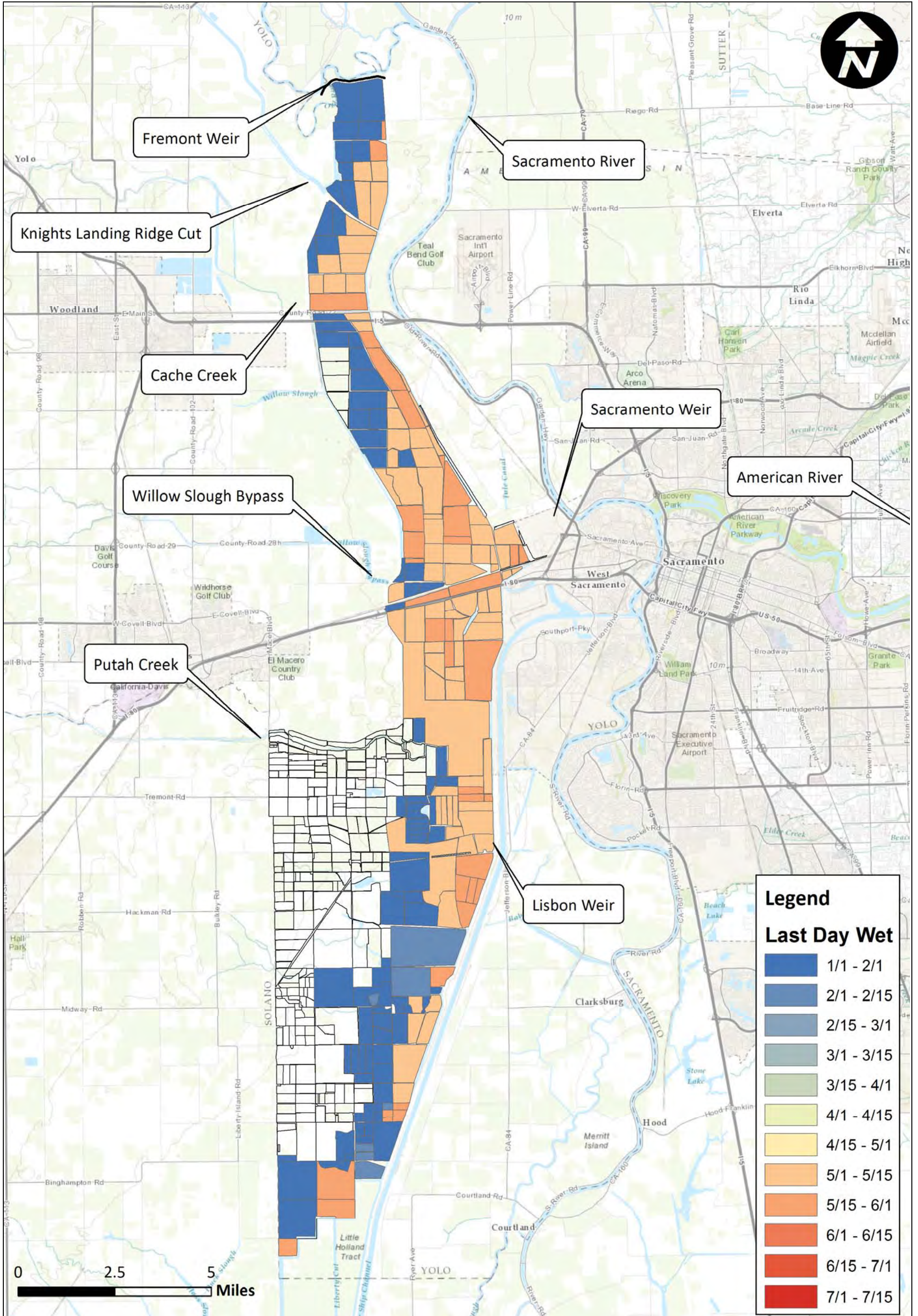


Yolo Bypass Salmonid Habitat Restoration and Fish Passage
Last Day Wet Existing Conditions 2002

Prepared for DWR

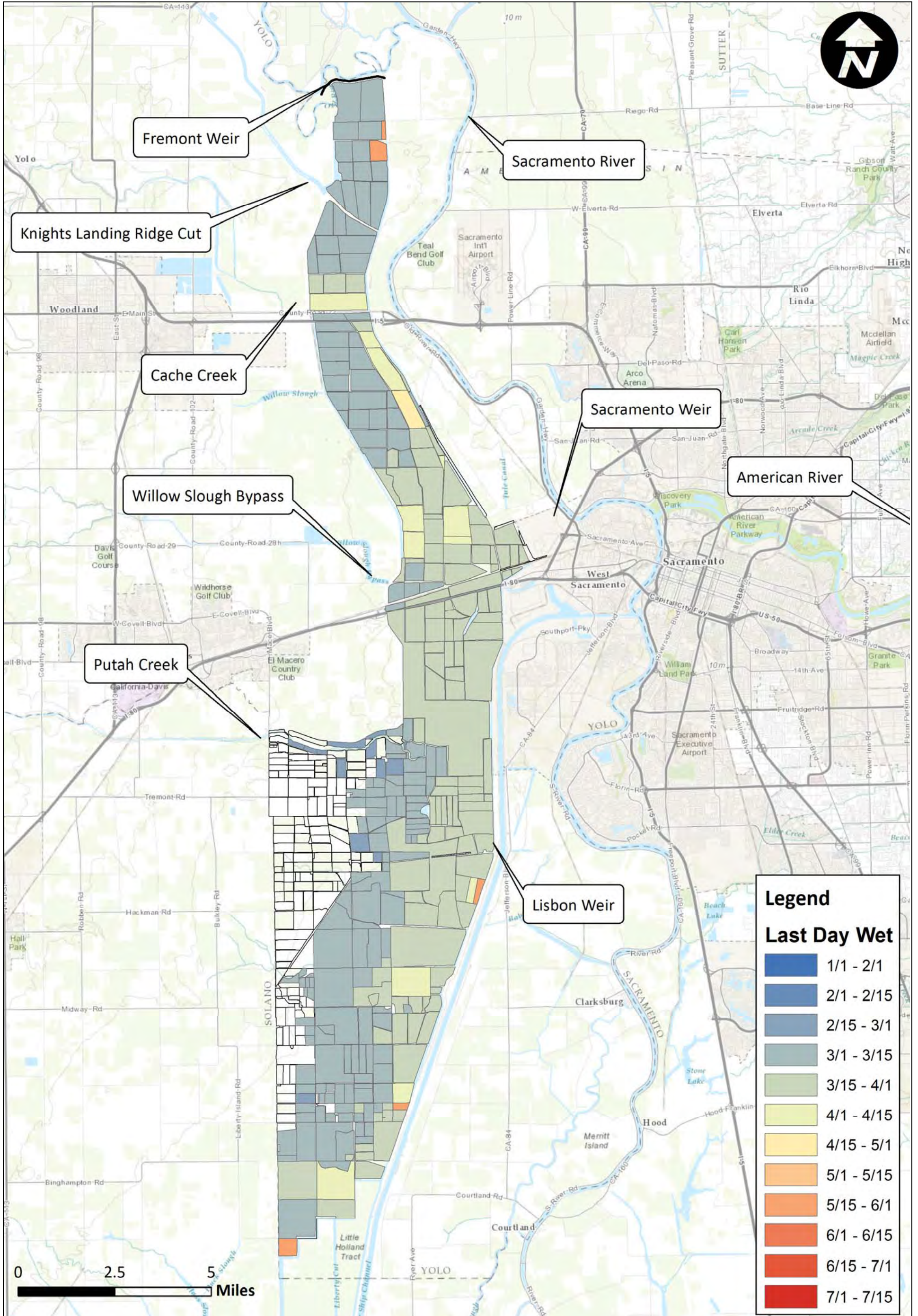
Created By: RDJ

Figure F6



Notes:





Notes:

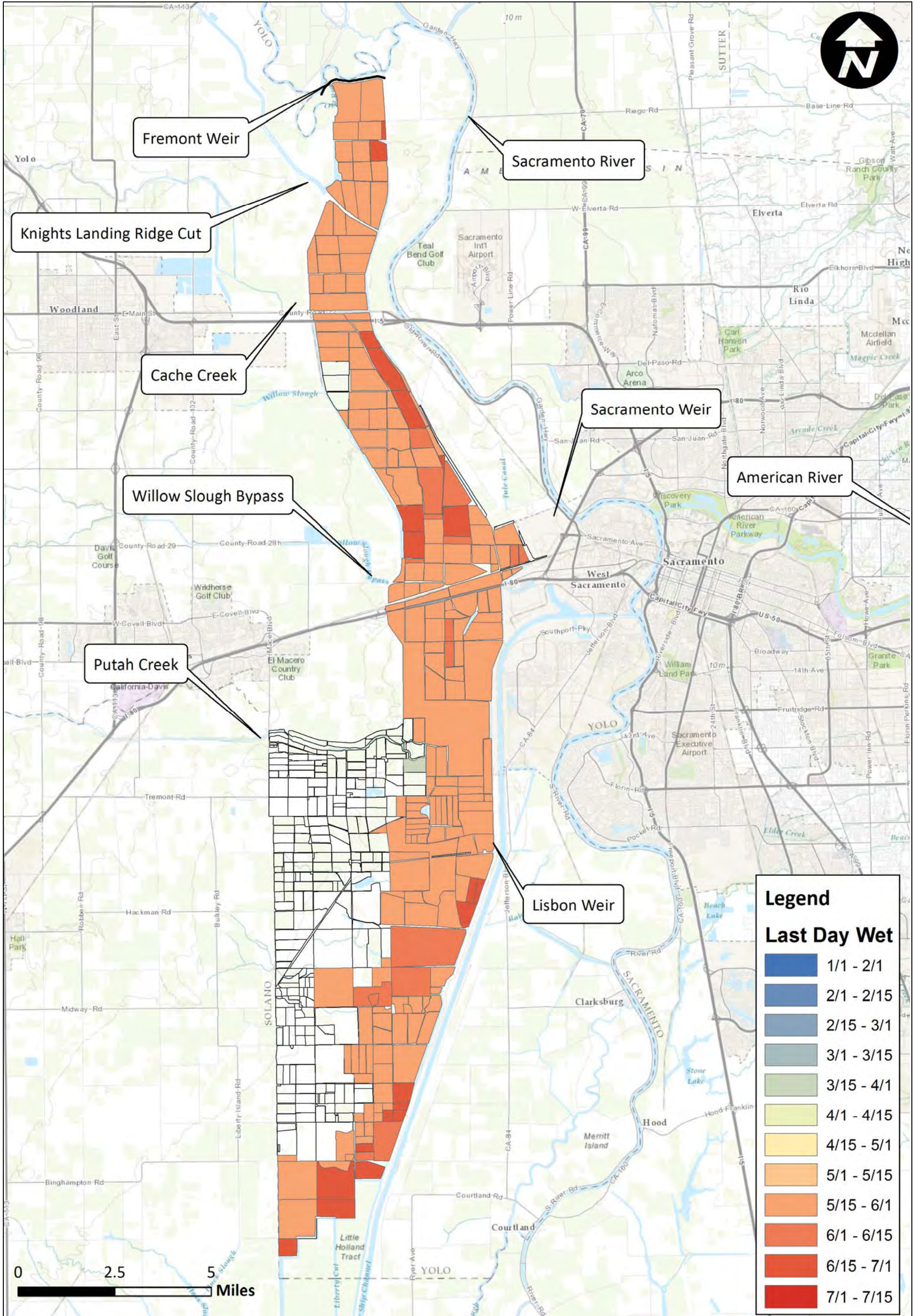


Yolo Bypass Salmonid Habitat Restoration and Fish Passage
Last Day Wet Existing Conditions 2004

Prepared for DWR

Created By: RDJ

Figure F8



Notes:

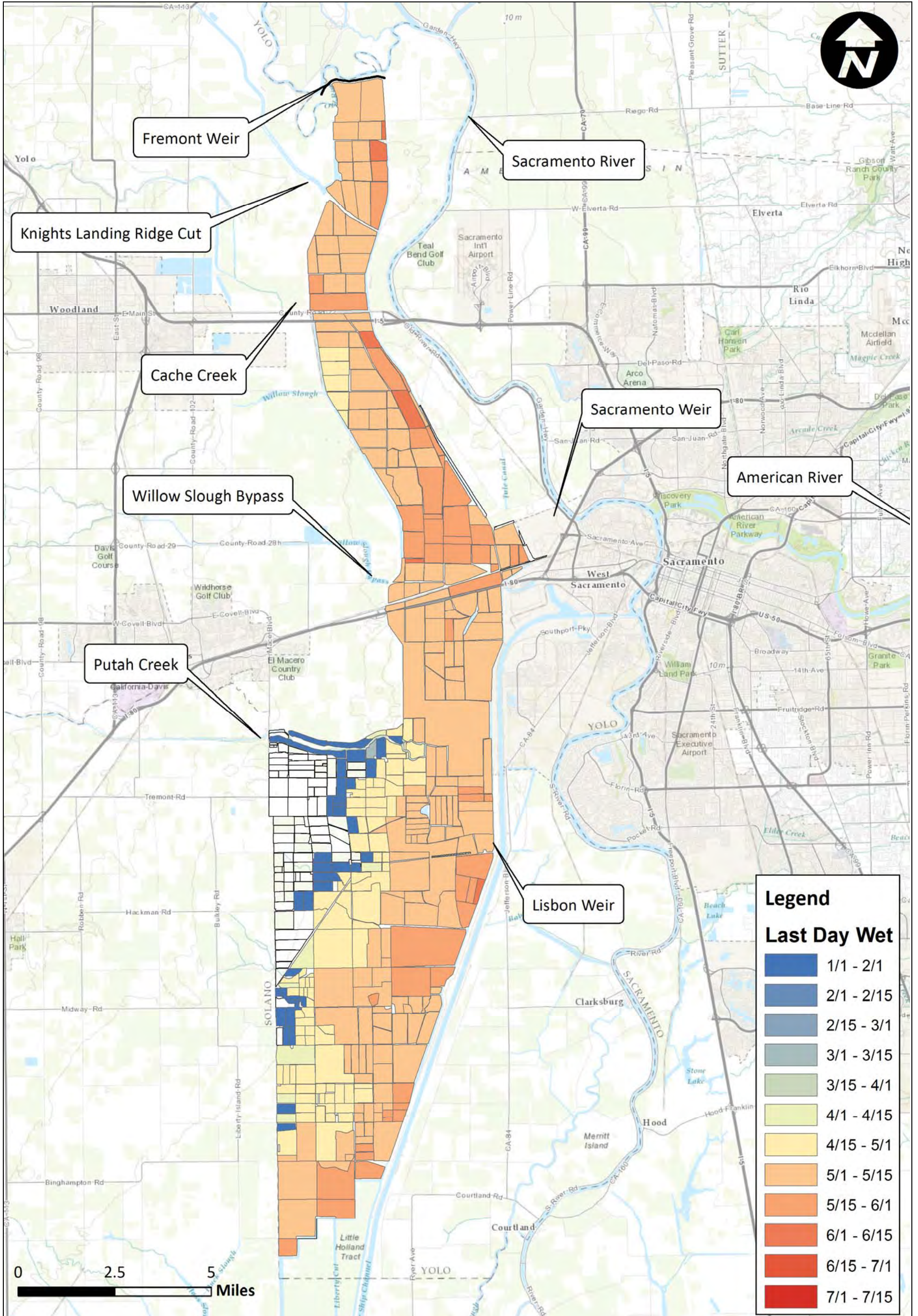


Yolo Bypass Salmonid Habitat Restoration and Fish Passage
Last Day Wet Existing Conditions 2005

Prepared for DWR

Created By: RDJ

Figure F9



Notes:

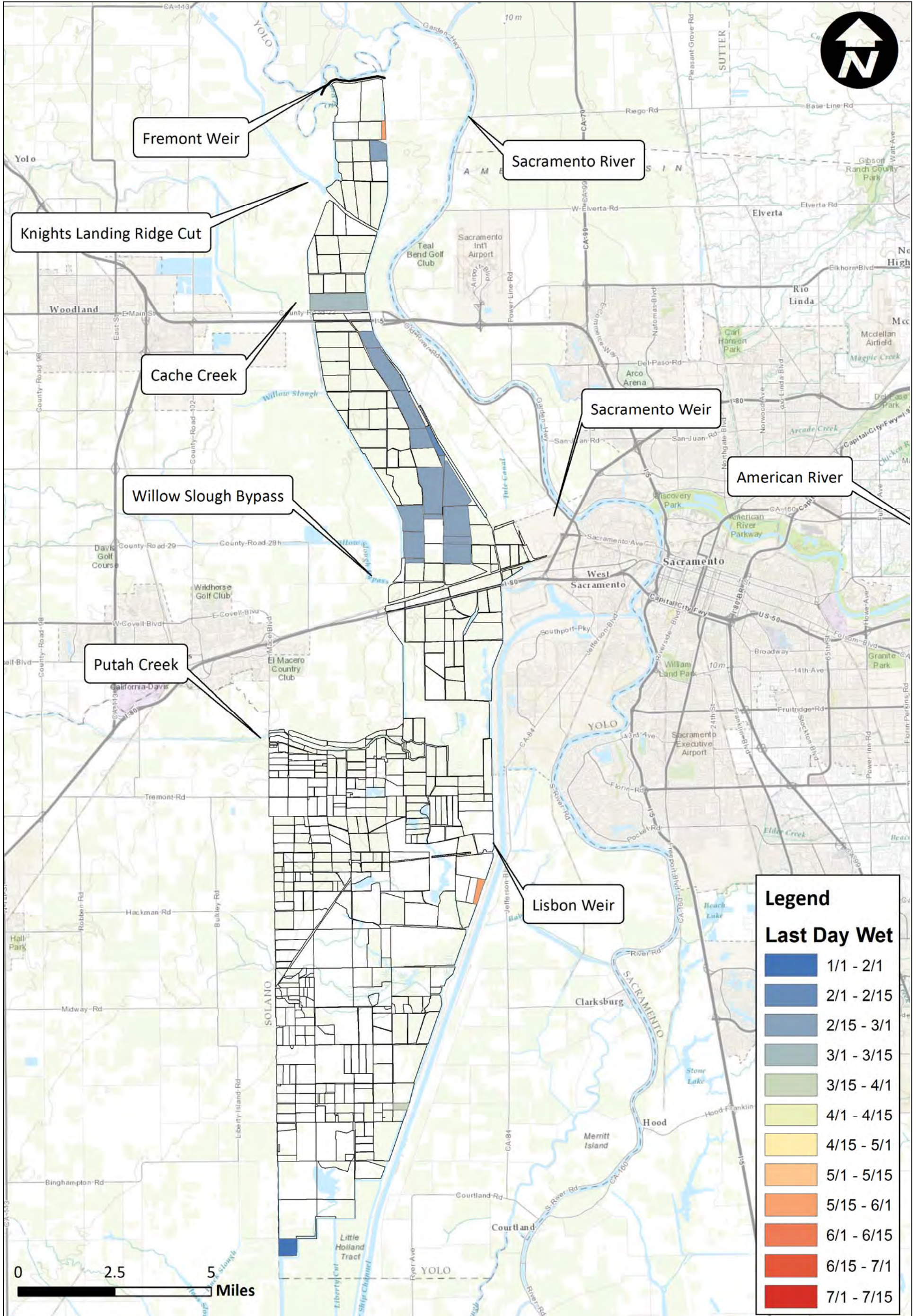


Yolo Bypass Salmonid Habitat Restoration and Fish Passage
Last Day Wet Existing Conditions 2006

Prepared for DWR

Created By: RDJ

Figure F10



Notes:

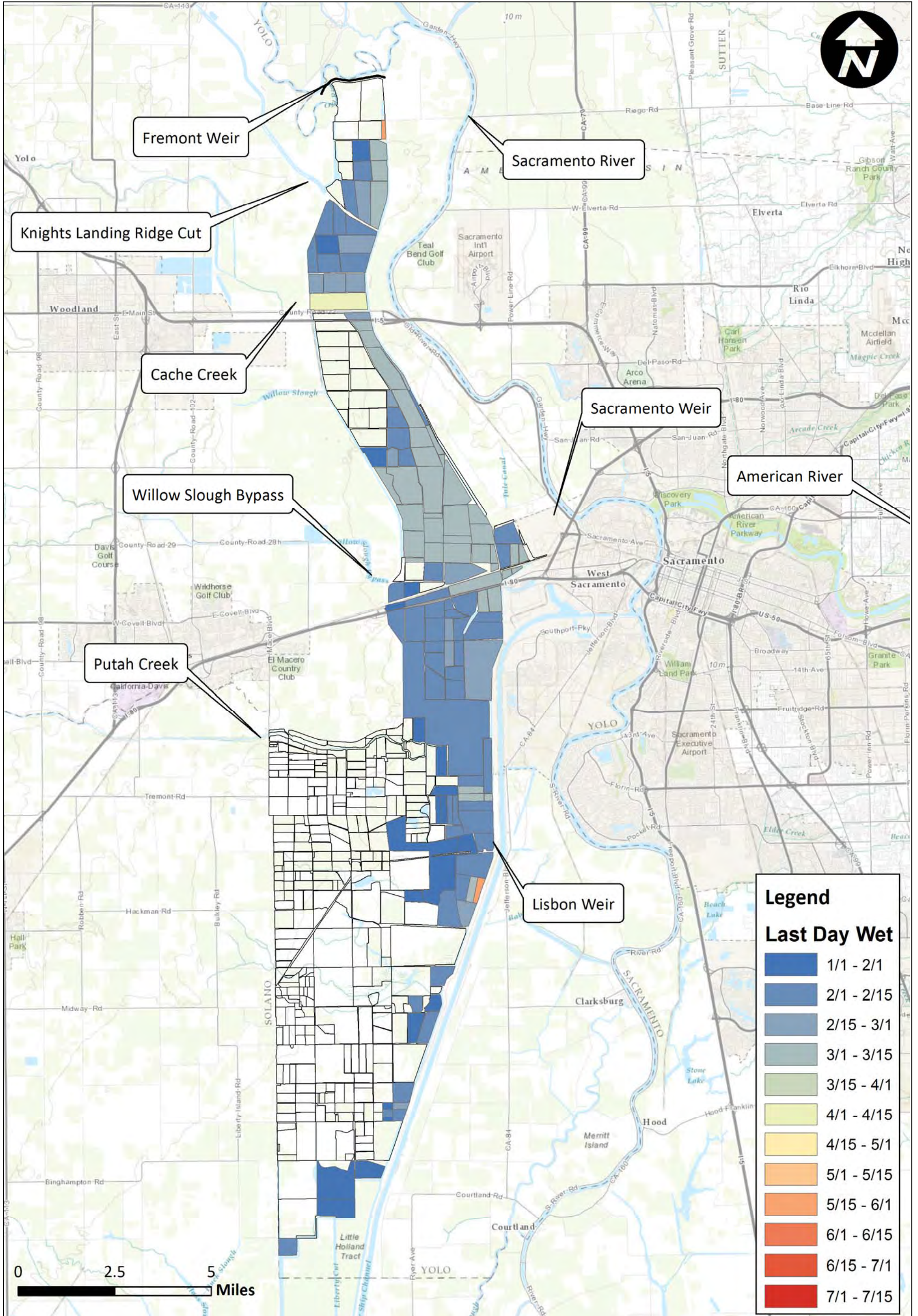


Yolo Bypass Salmonid Habitat Restoration and Fish Passage
Last Day Wet Existing Conditions 2007

Prepared for DWR

Created By: RDJ

Figure F11



Notes:



Prepared for DWR Created By: RDJ

Yolo Bypass Salmonid Habitat Restoration and Fish Passage
Last Day Wet Existing Conditions 2008
Figure F12

Legend	
Last Day Wet	
	1/1 - 2/1
	2/1 - 2/15
	2/15 - 3/1
	3/1 - 3/15
	3/15 - 4/1
	4/1 - 4/15
	4/15 - 5/1
	5/1 - 5/15
	5/15 - 6/1
	6/1 - 6/15
	6/15 - 7/1
	7/1 - 7/15