

Notes: TUFLOW model results showing 2D inundation patterns (at specified time stamp) for existing and 4/30 gate closure (left panes), Yolo Bypass inflows (upper right panes), and wetted area for all five gate closures (lower right pane). The vertical bar in the right panes corresponds to the time stamp below the left panes, whereby the blue hatching represents 4/30 gate closure conditions as overlain by the grey hatching representing existing conditions.



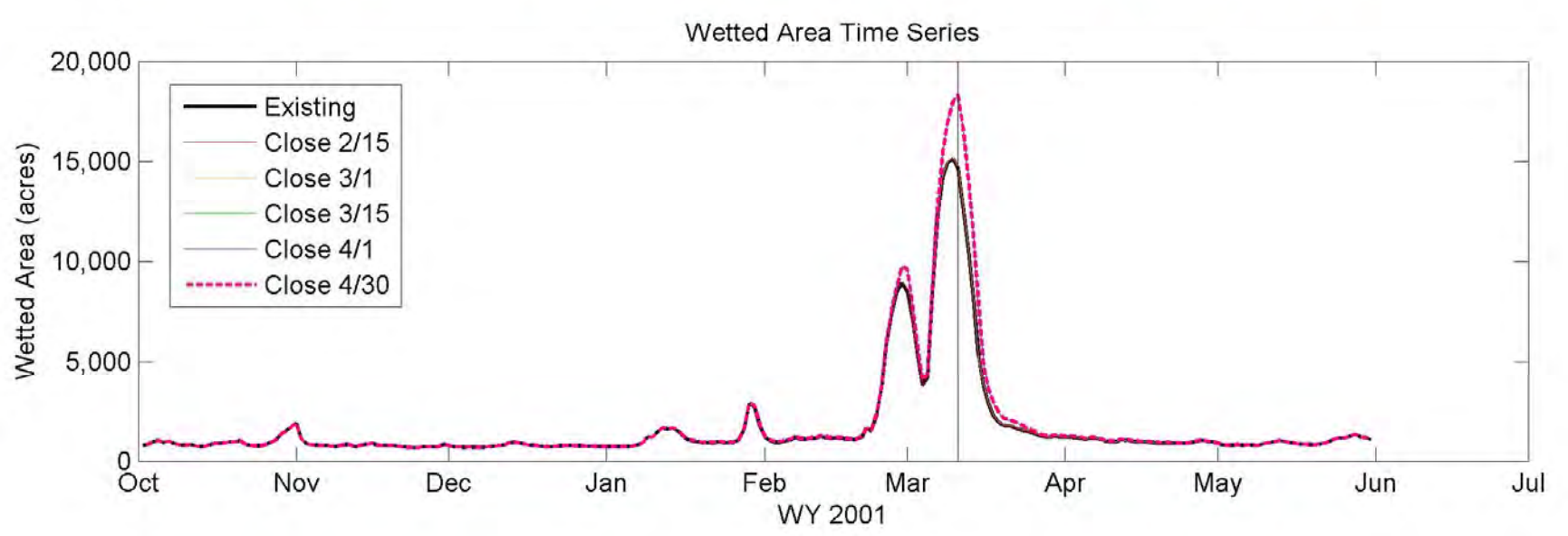
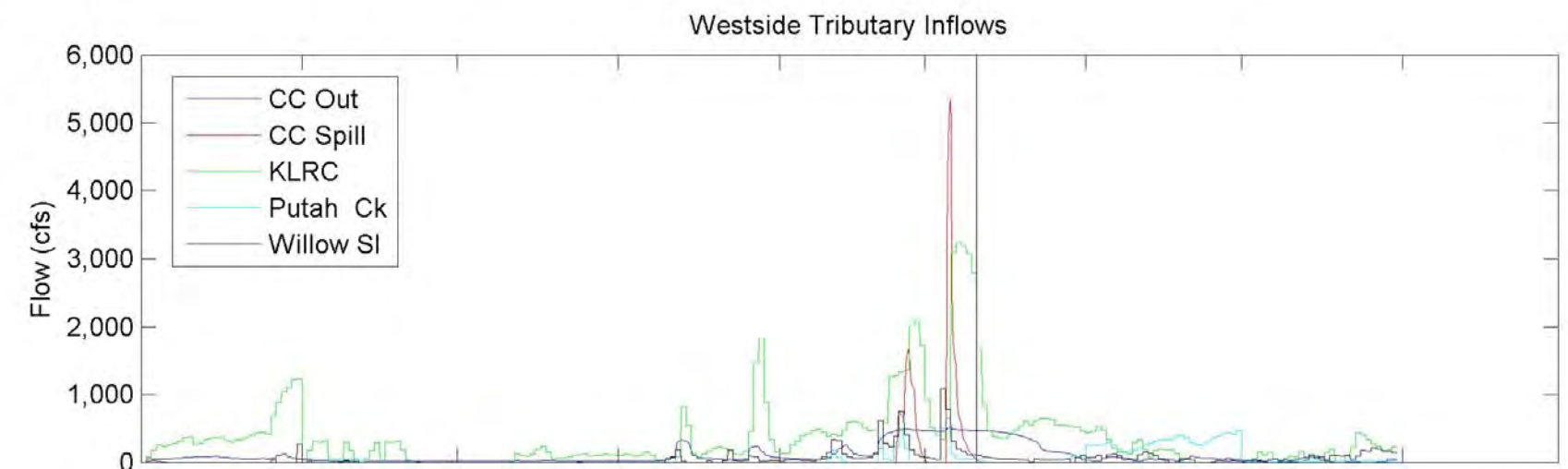
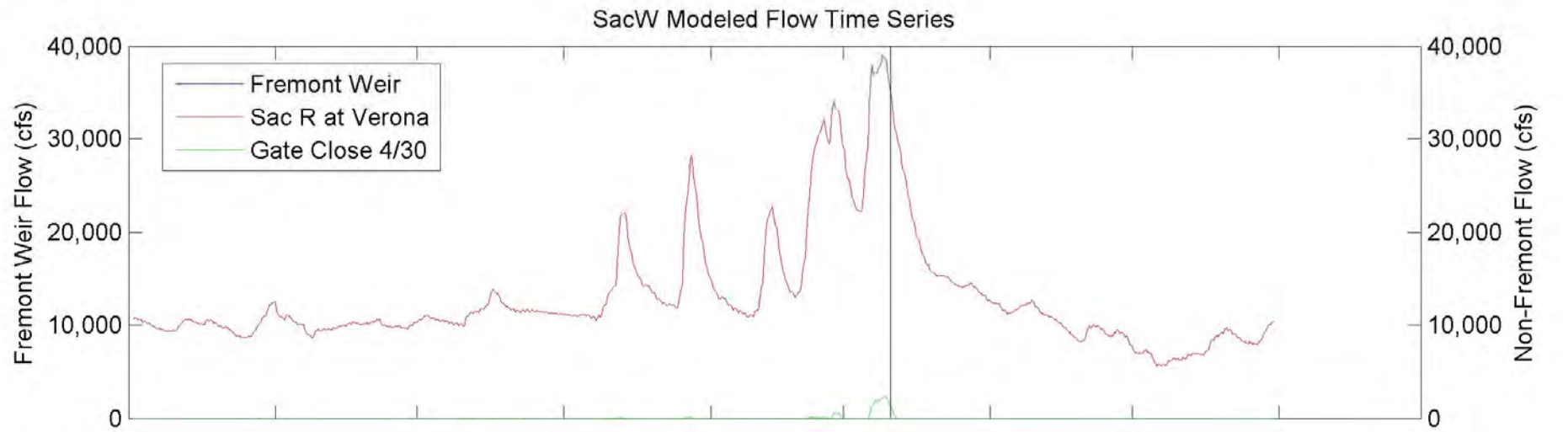
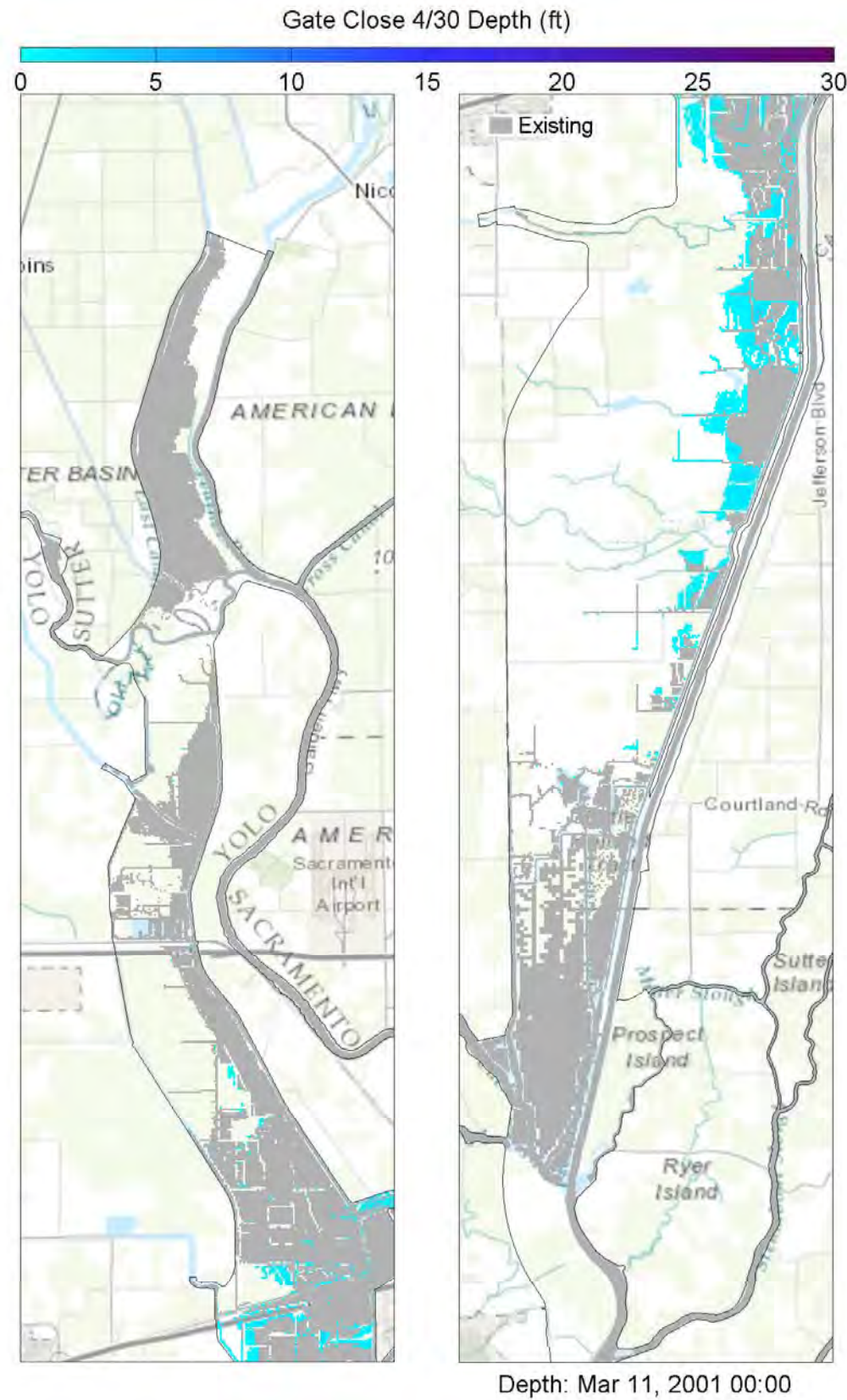
Yolo Bypass Salmonid Habitat Restoration and Fish Passage

Wetted Area Comparison for WY 2000 for SacW

Prepared for DWR

Created By: SJB

Figure E52



Notes: TUFLOW model results showing 2D inundation patterns (at specified time stamp) for existing and 4/30 gate closure (left panes), Yolo Bypass inflows (upper right panes), and wetted area for all five gate closures (lower right pane). The vertical bar in the right panes corresponds to the time stamp below the left panes, whereby the blue hatching represents 4/30 gate closure conditions as overlain by the grey hatching representing existing conditions.



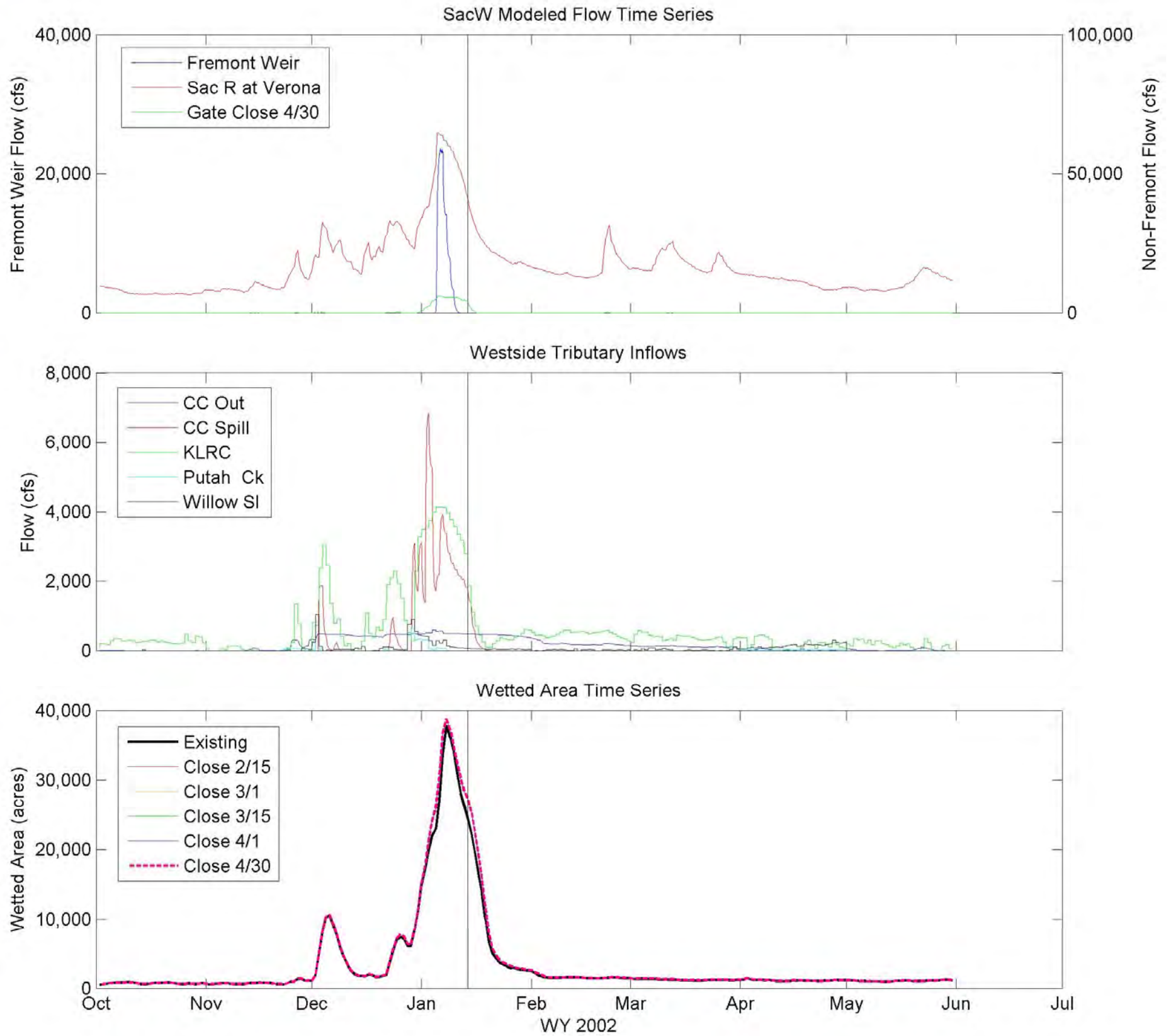
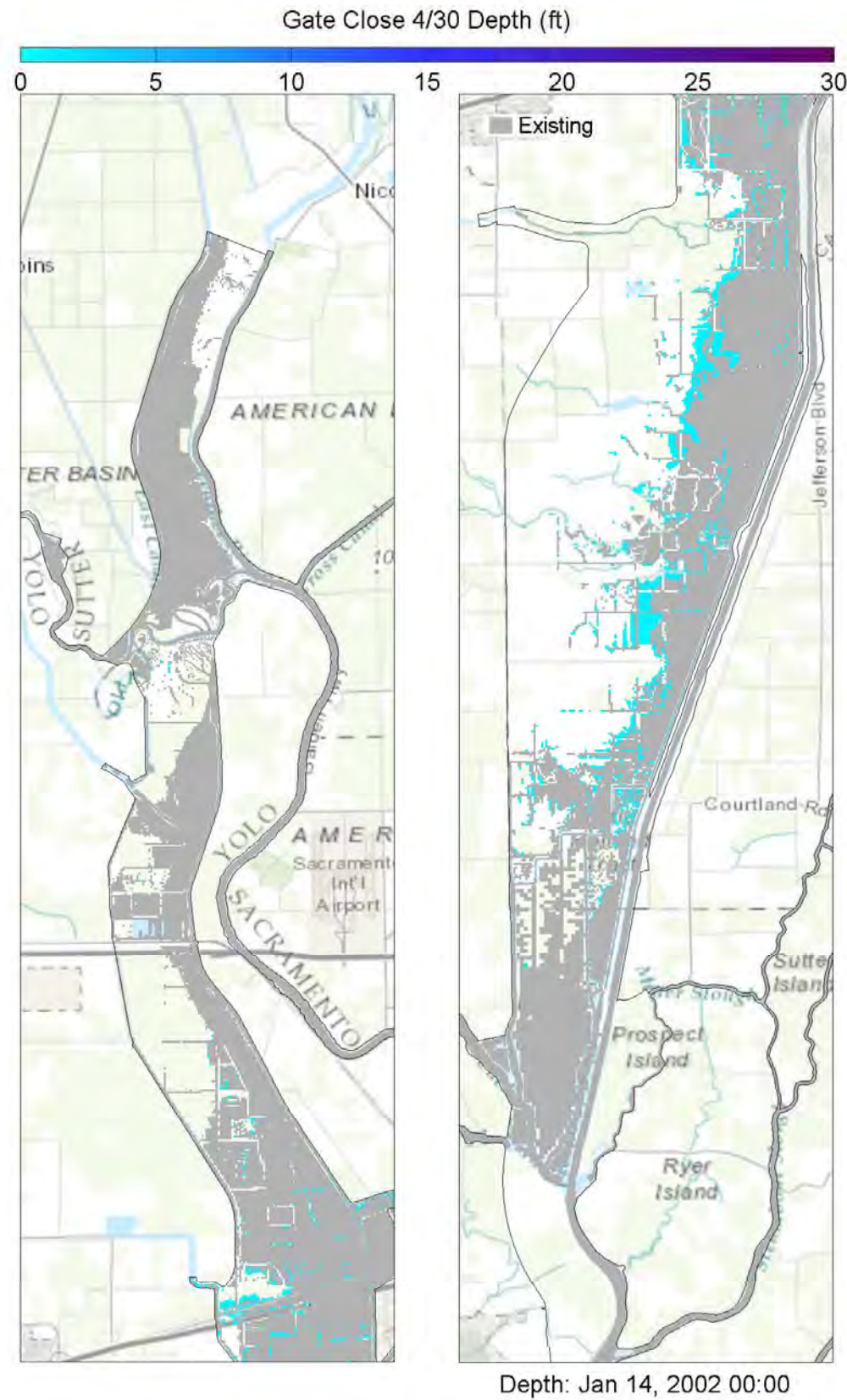
Yolo Bypass Salmonid Habitat Restoration and Fish Passage

Wetted Area Comparison for WY 2001 for SacW

Prepared for DWR

Created By: SJB

Figure E53



Notes: TUFLOW model results showing 2D inundation patterns (at specified time stamp) for existing and 4/30 gate closure (left panes), Yolo Bypass inflows (upper right panes), and wetted area for all five gate closures (lower right pane). The vertical bar in the right panes corresponds to the time stamp below the left panes, whereby the blue hatching represents 4/30 gate closure conditions as overlain by the grey hatching representing existing conditions.



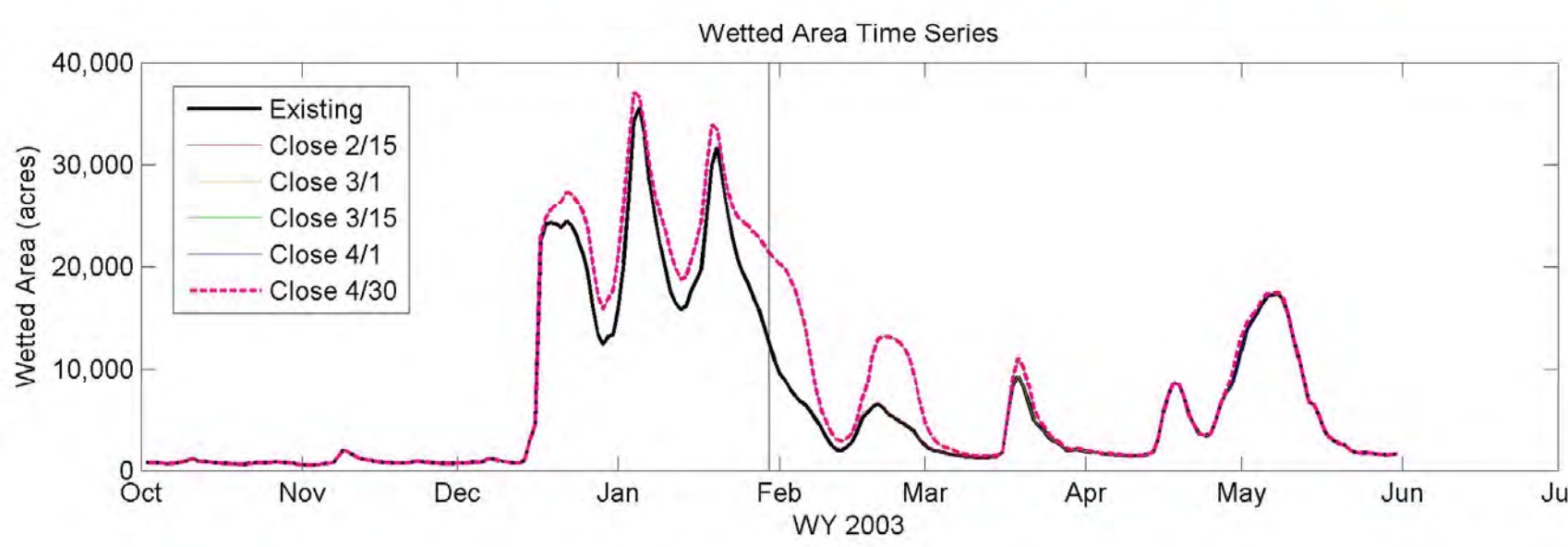
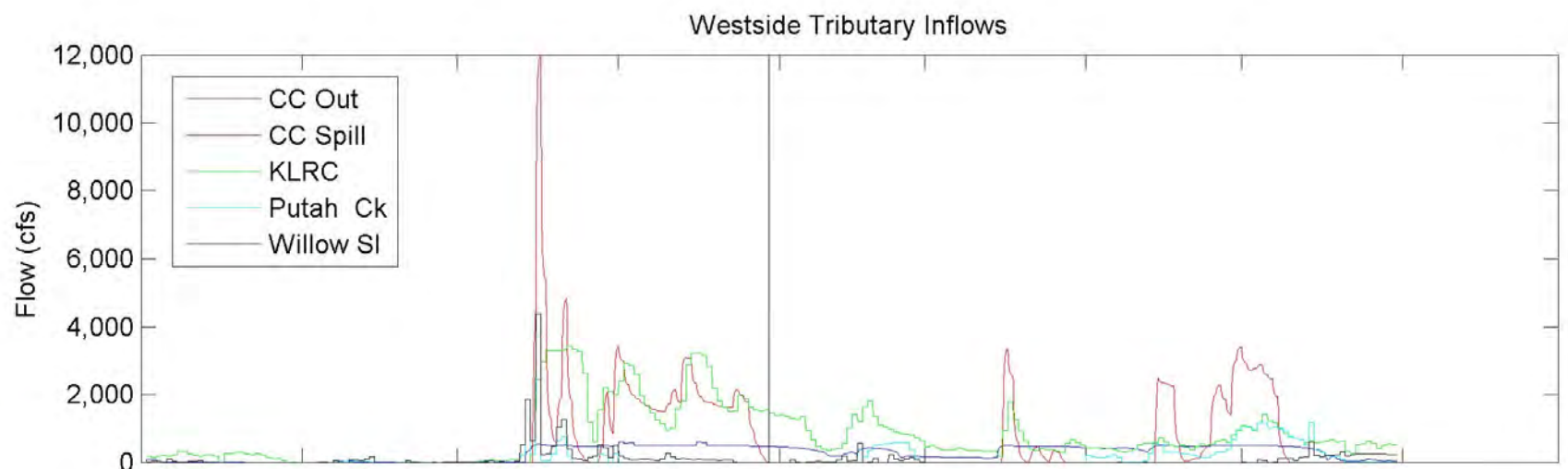
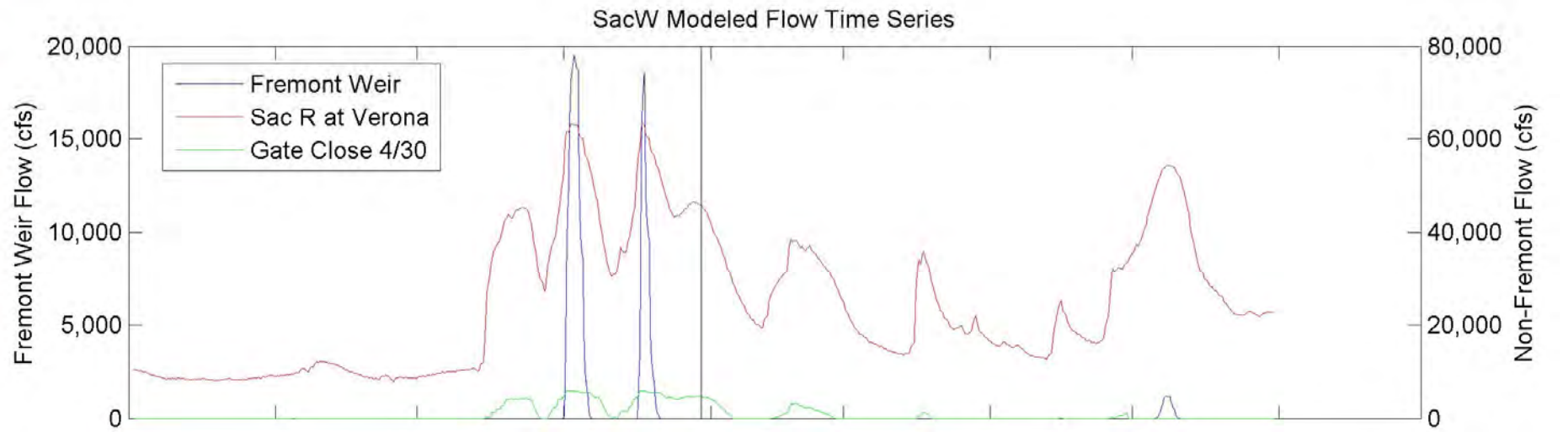
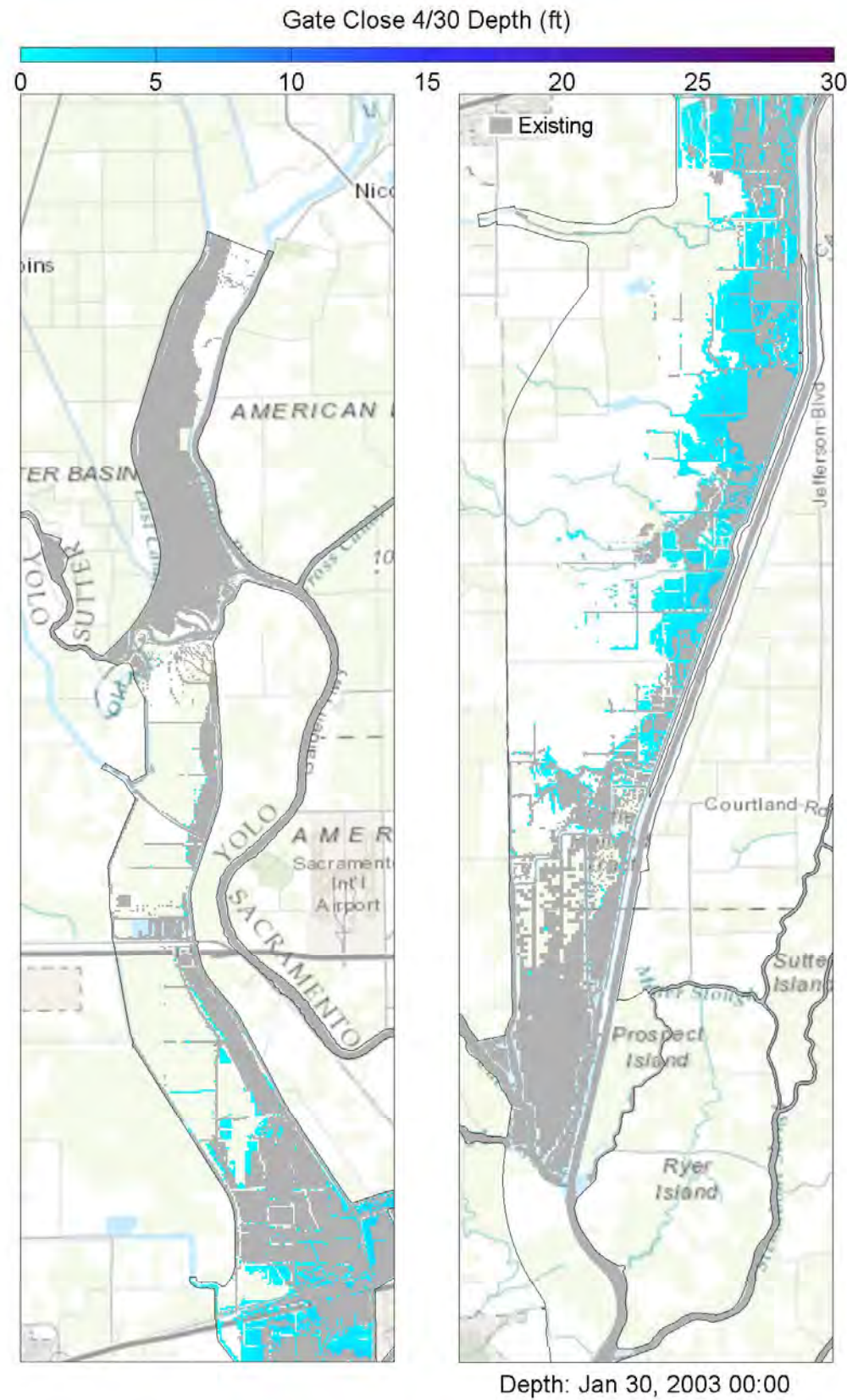
Yolo Bypass Salmonid Habitat Restoration and Fish Passage

Wetted Area Comparison for WY 2002 for SacW

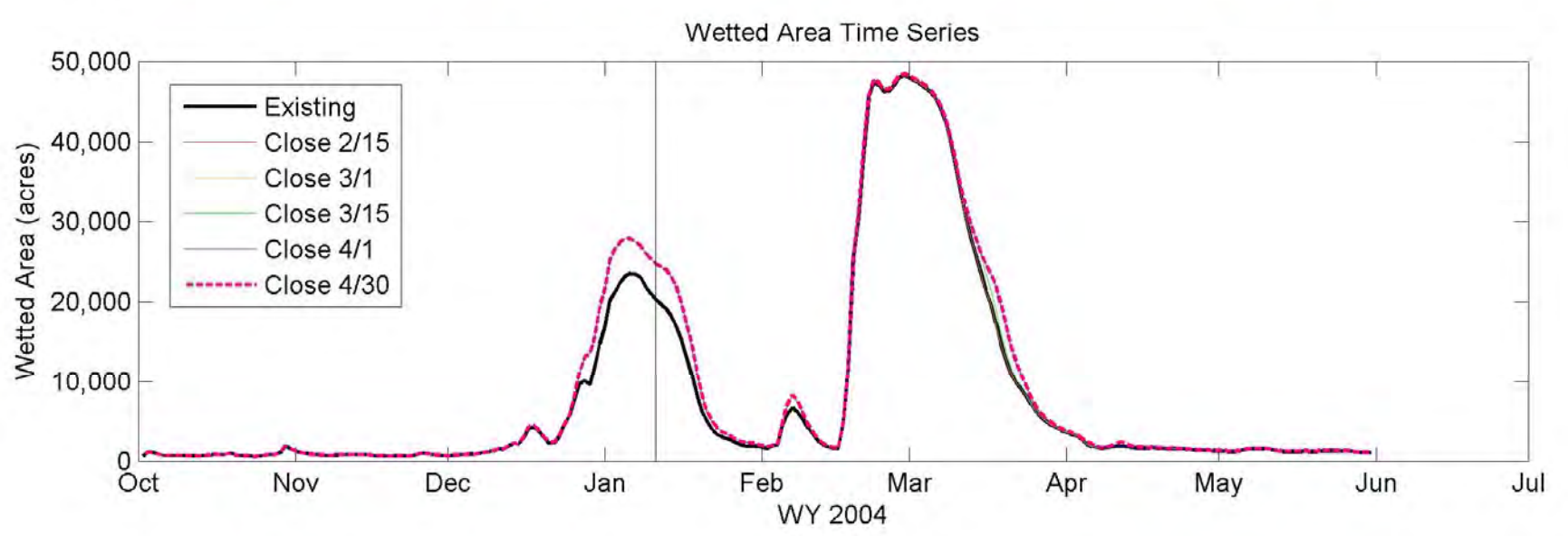
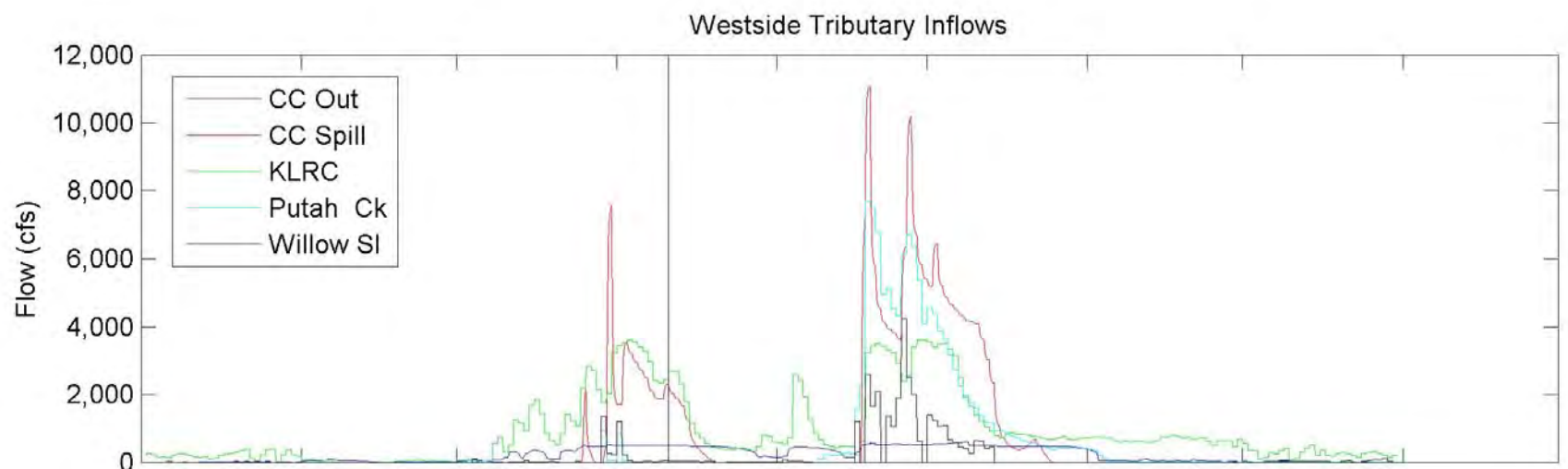
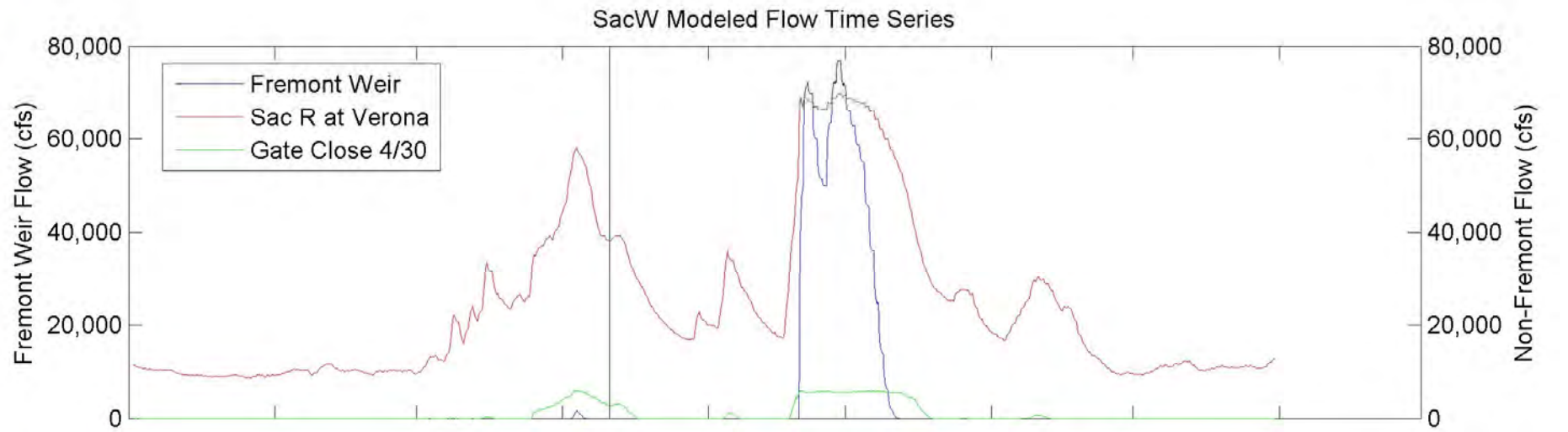
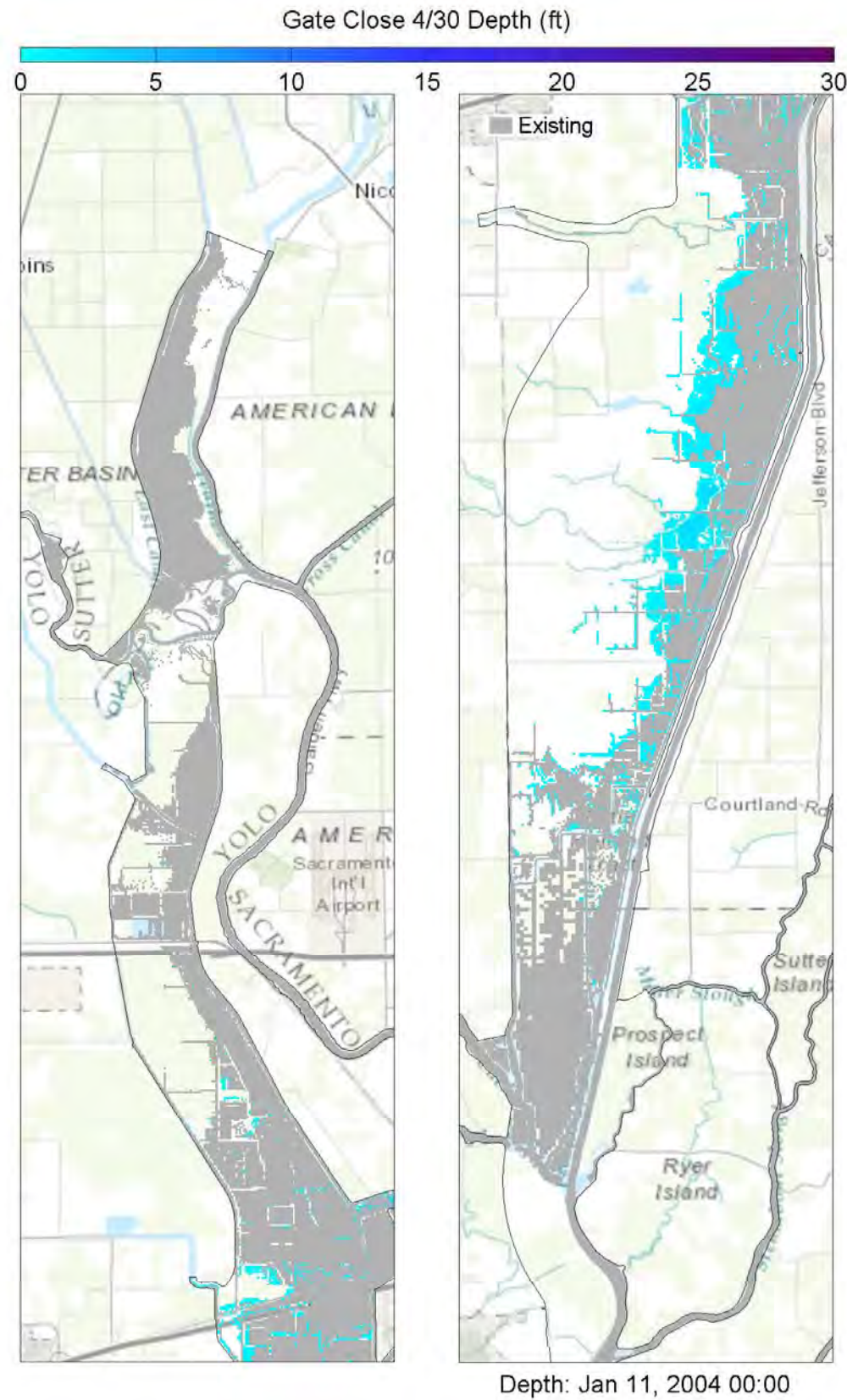
Prepared for DWR

Created By: SJB

Figure E54



Notes: TUFLOW model results showing 2D inundation patterns (at specified time stamp) for existing and 4/30 gate closure (left panes), Yolo Bypass inflows (upper right panes), and wetted area for all five gate closures (lower right pane). The vertical bar in the right panes corresponds to the time stamp below the left panes, whereby the blue hatching represents 4/30 gate closure conditions as overlain by the grey hatching representing existing conditions.



Notes: TUFLOW model results showing 2D inundation patterns (at specified time stamp) for existing and 4/30 gate closure (left panes), Yolo Bypass inflows (upper right panes), and wetted area for all five gate closures (lower right pane). The vertical bar in the right panes corresponds to the time stamp below the left panes, whereby the blue hatching represents 4/30 gate closure conditions as overlain by the grey hatching representing existing conditions.



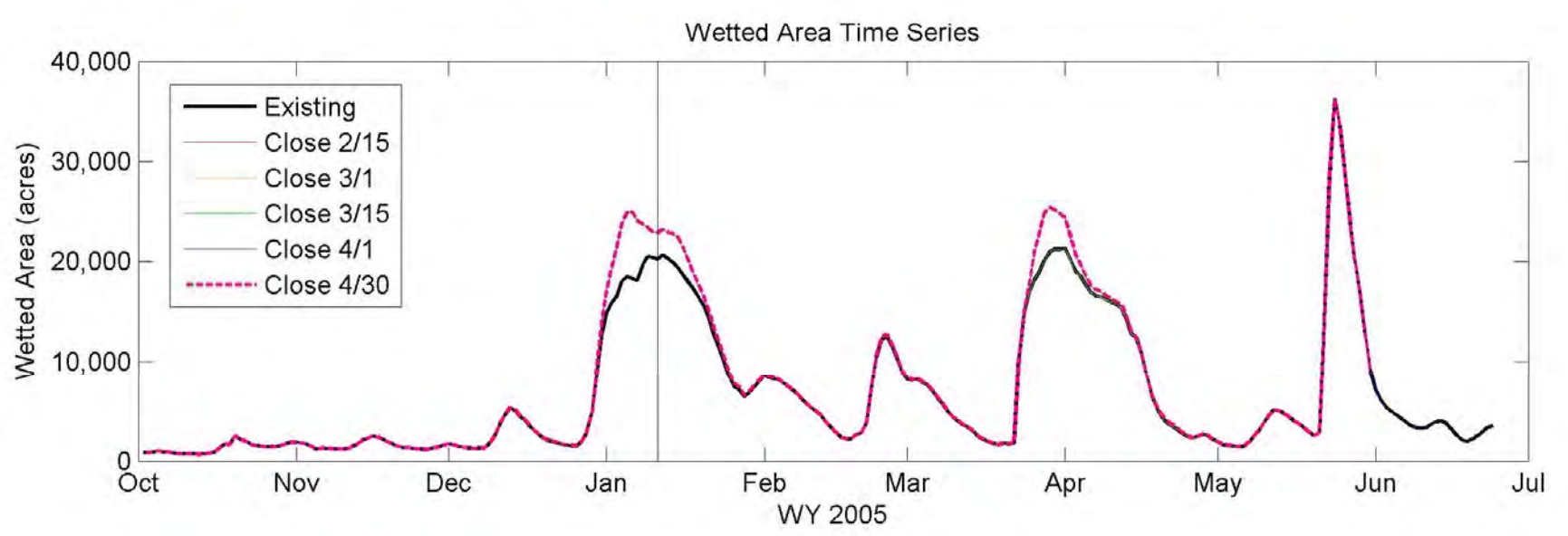
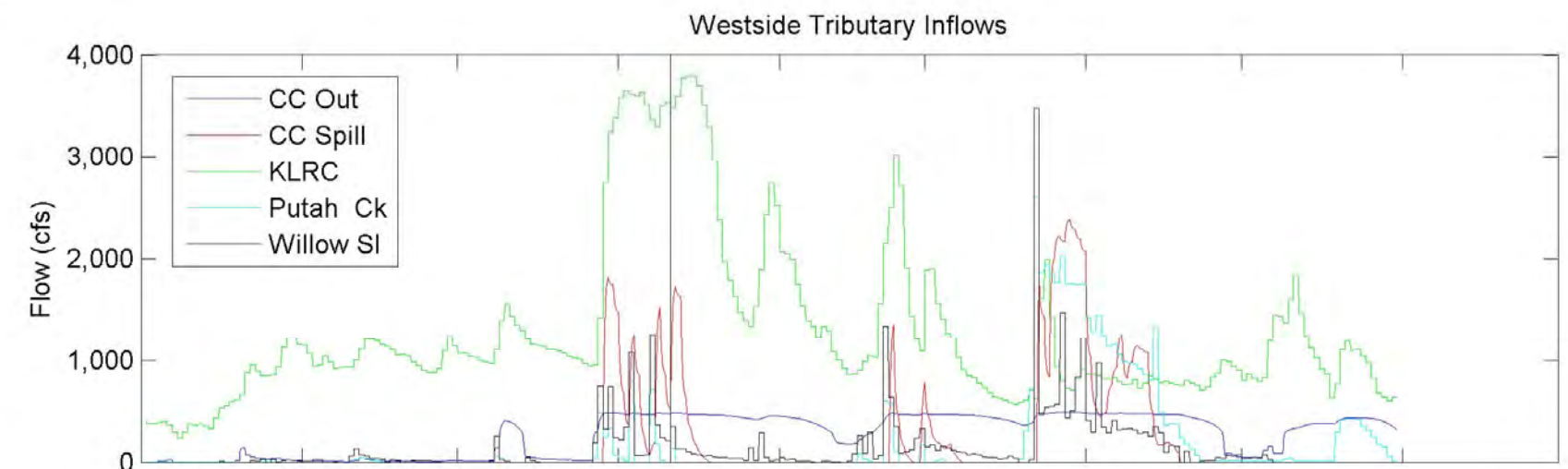
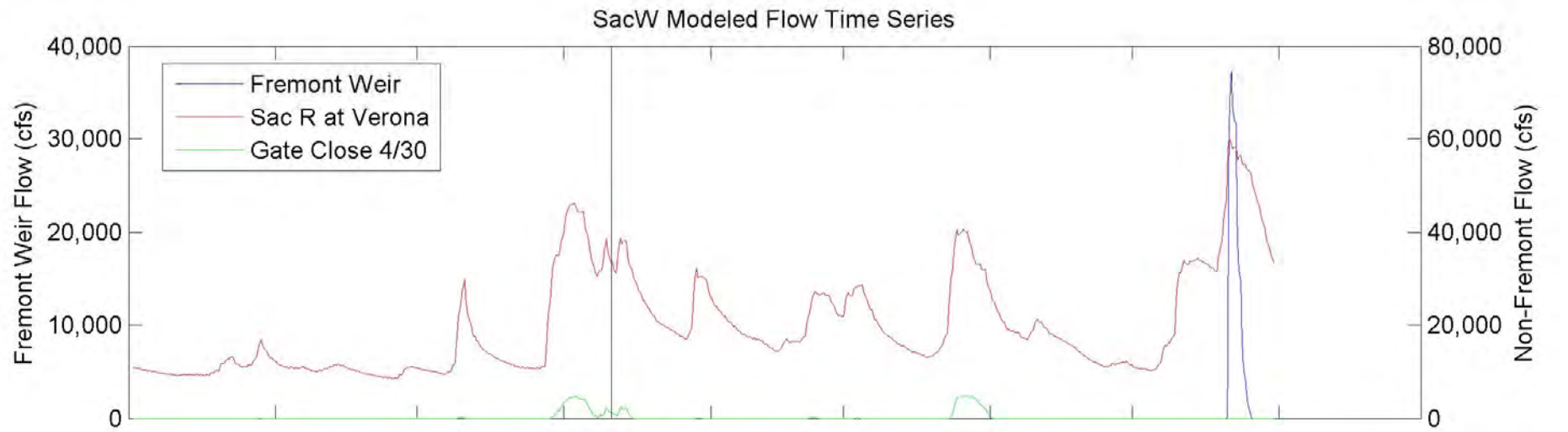
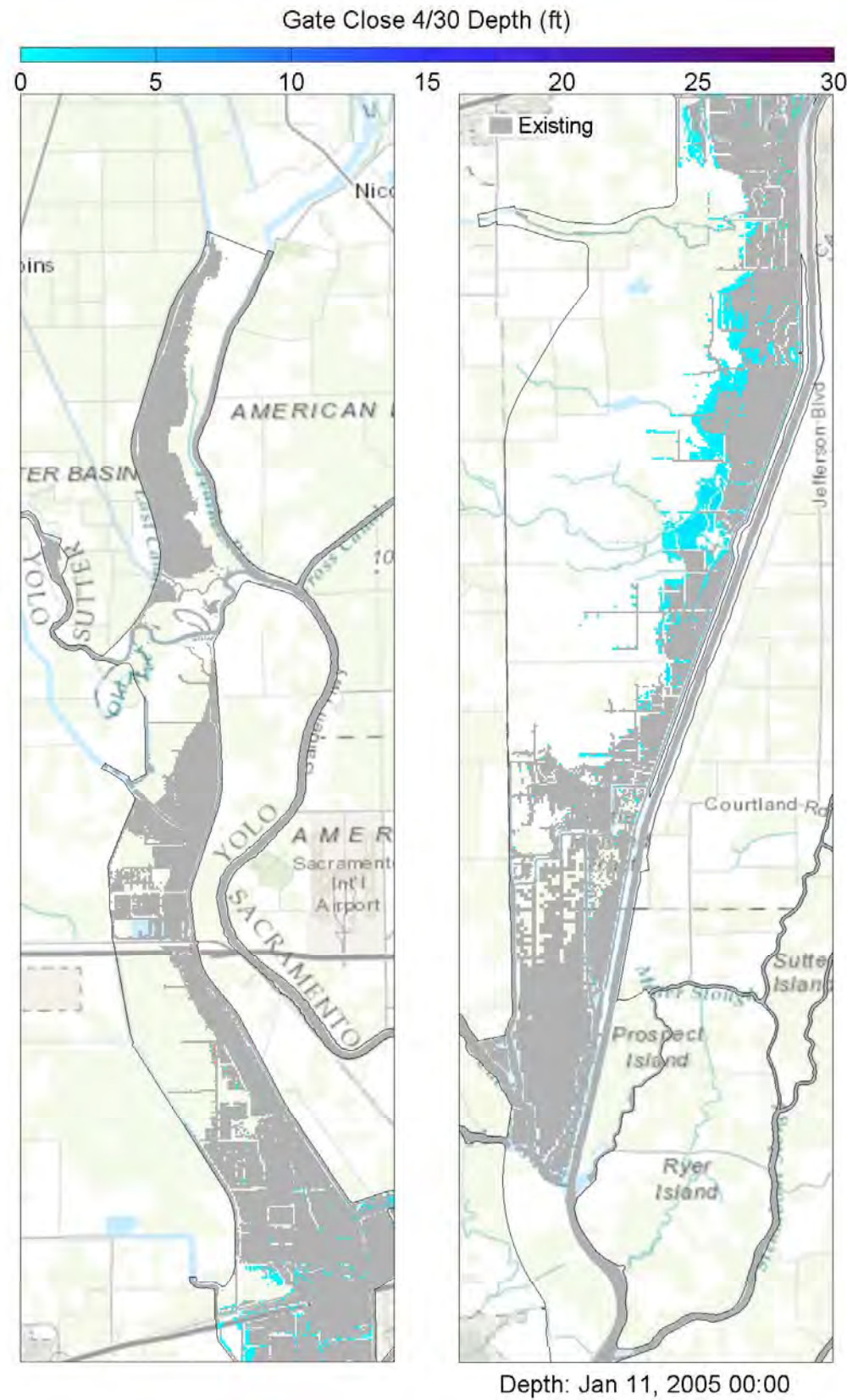
Yolo Bypass Salmonid Habitat Restoration and Fish Passage

Wetted Area Comparison for WY 2004 for SacW

Prepared for DWR

Created By: SJB

Figure E56



Notes: TUFLOW model results showing 2D inundation patterns (at specified time stamp) for existing and 4/30 gate closure (left panes), Yolo Bypass inflows (upper right panes), and wetted area for all five gate closures (lower right pane). The vertical bar in the right panes corresponds to the time stamp below the left panes, whereby the blue hatching represents 4/30 gate closure conditions as overlain by the grey hatching representing existing conditions.



Yolo Bypass Salmonid Habitat Restoration and Fish Passage

Wetted Area Comparison for WY 2005 for SacW

Prepared for DWR

Created By: SJB

Figure E57