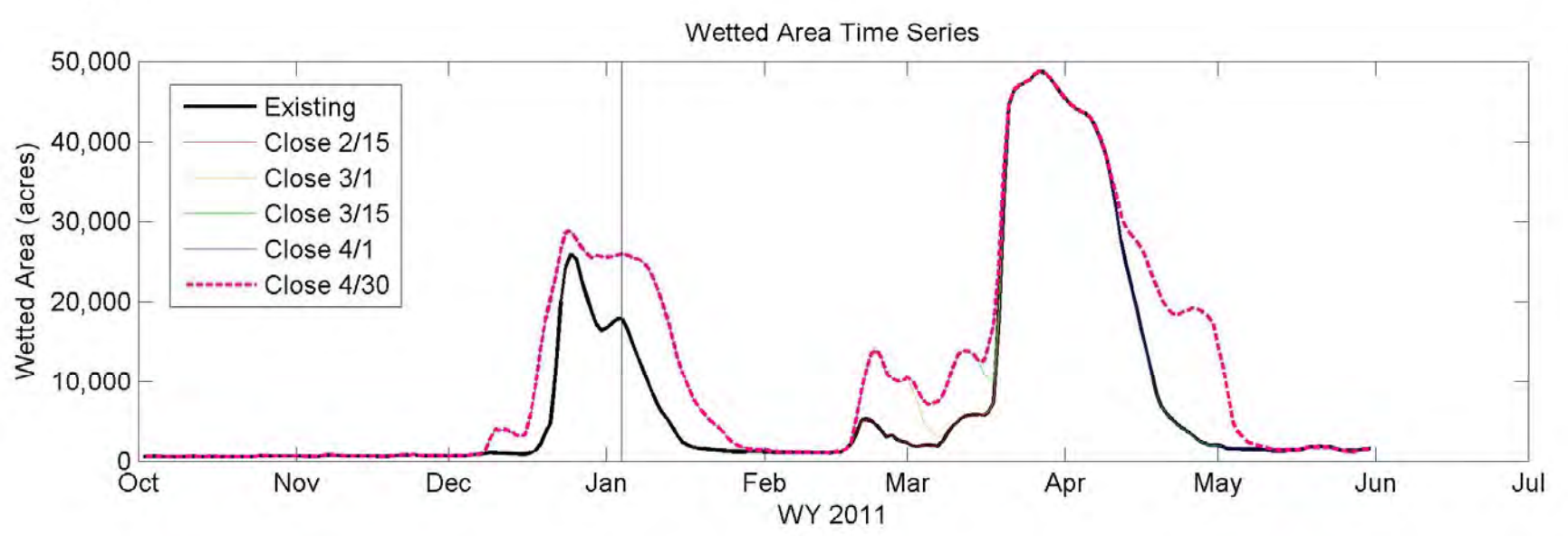
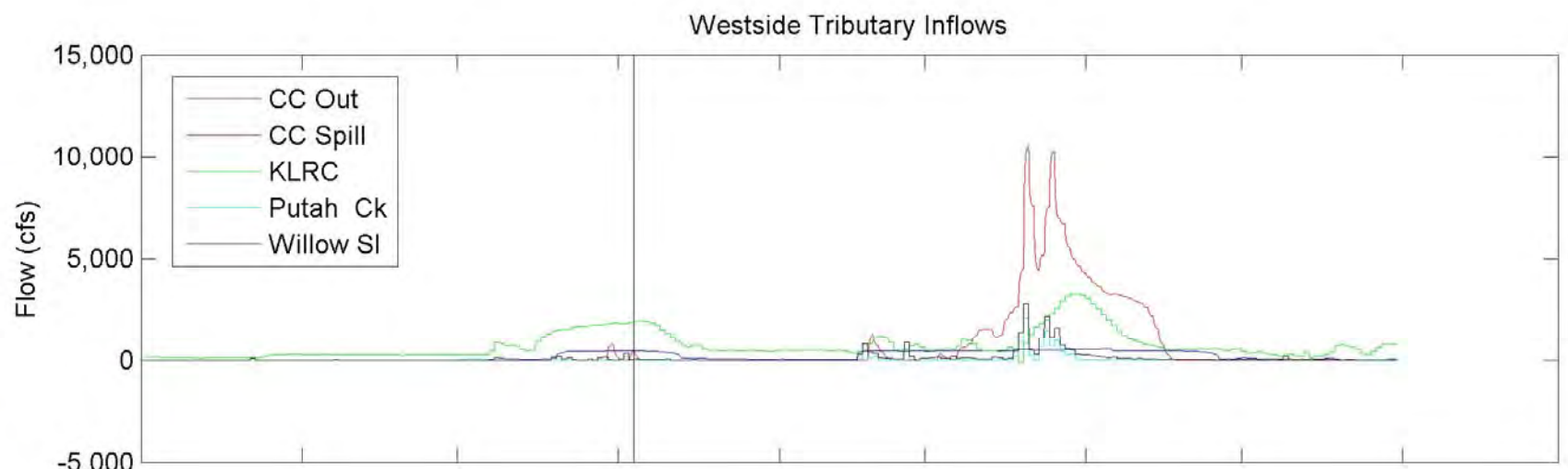
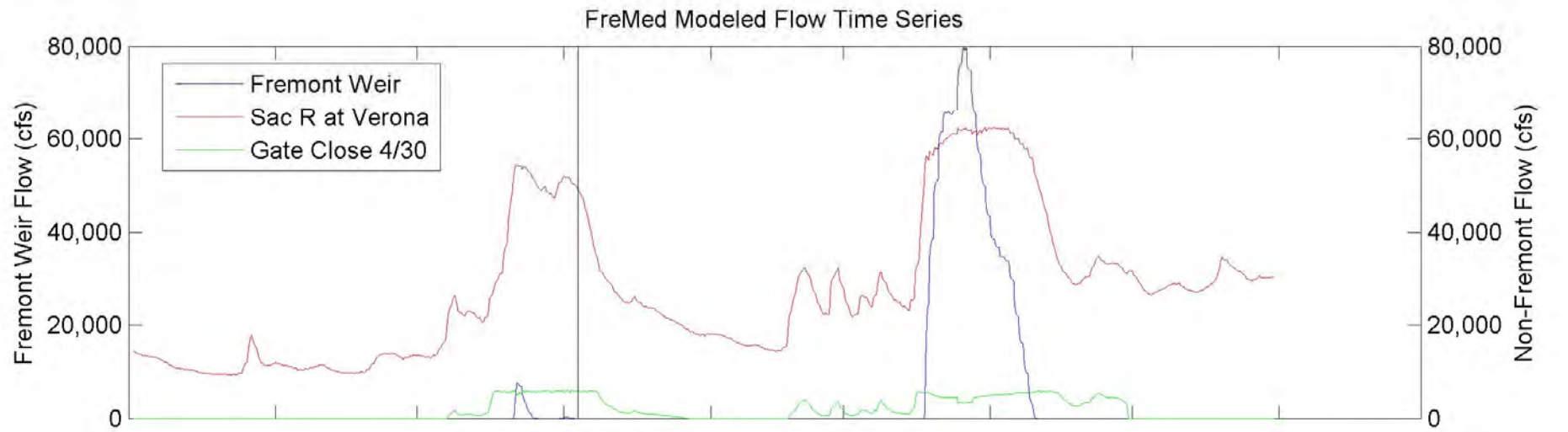
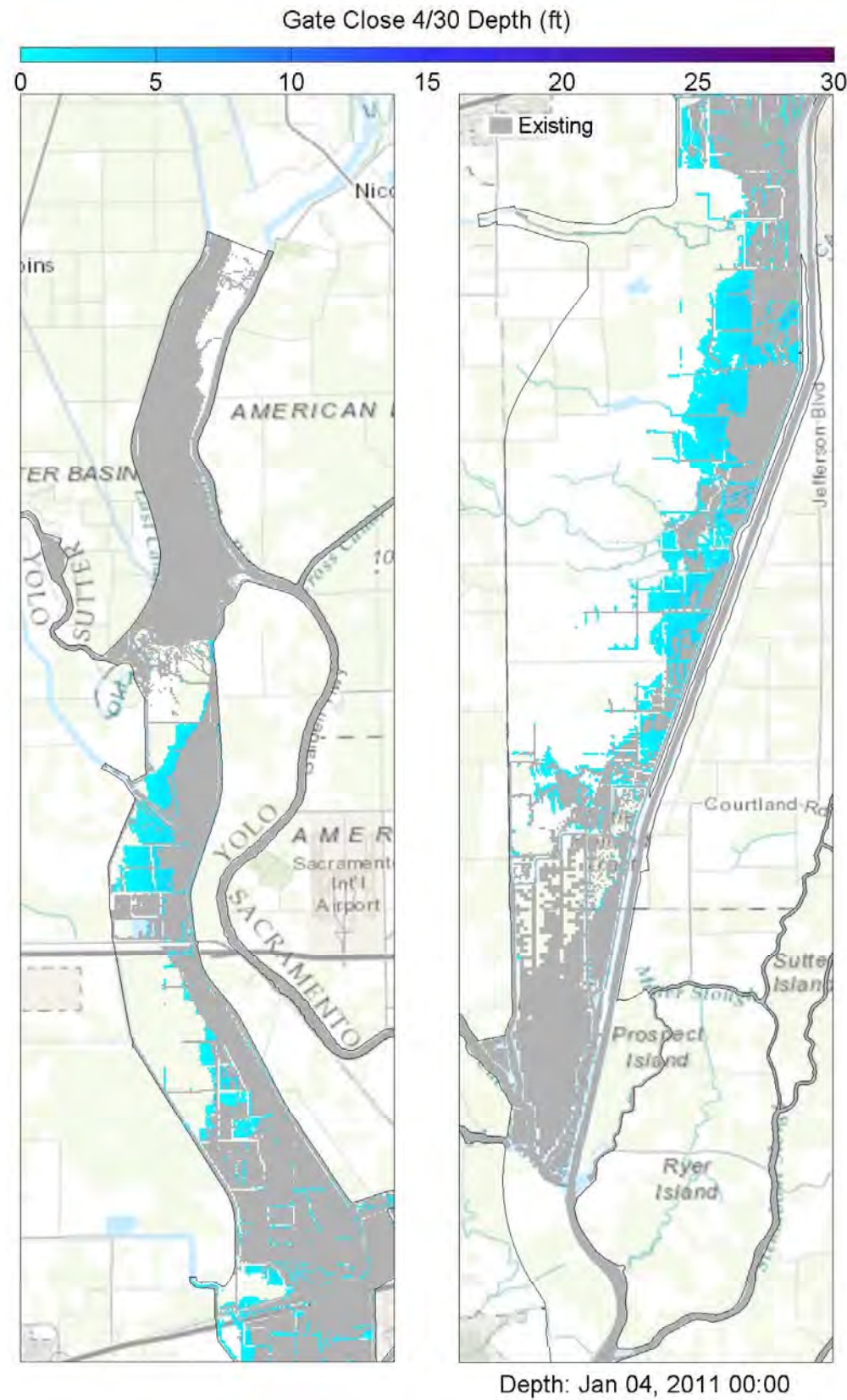


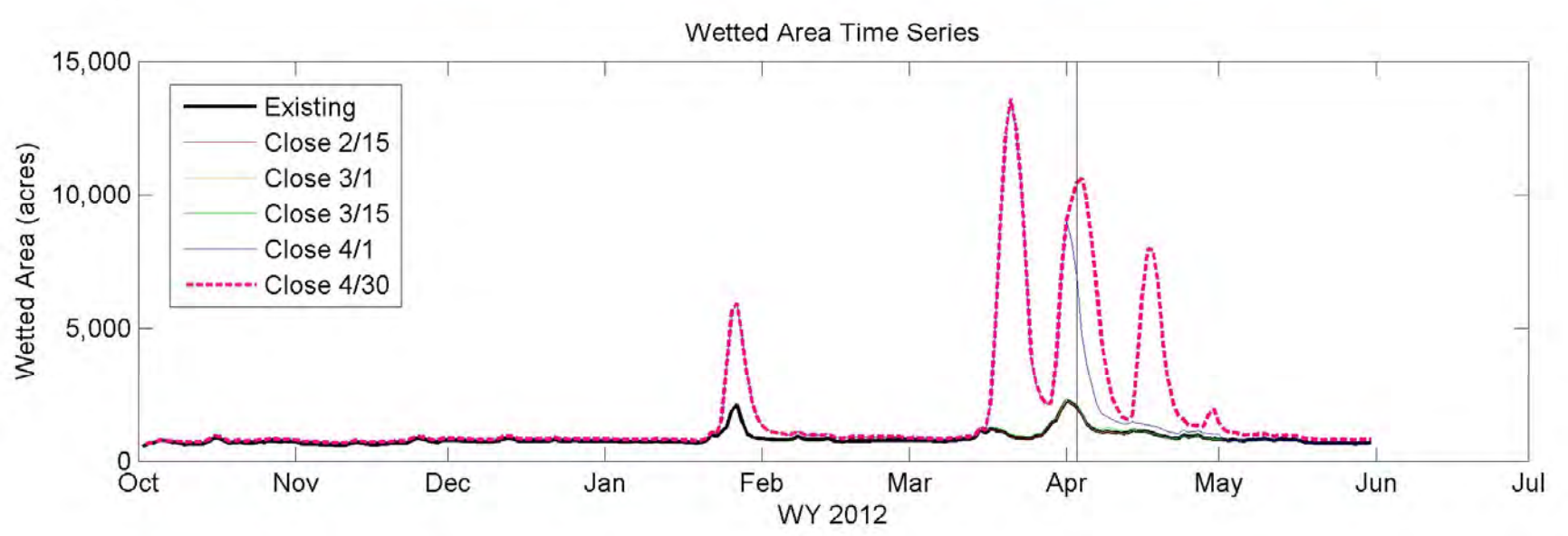
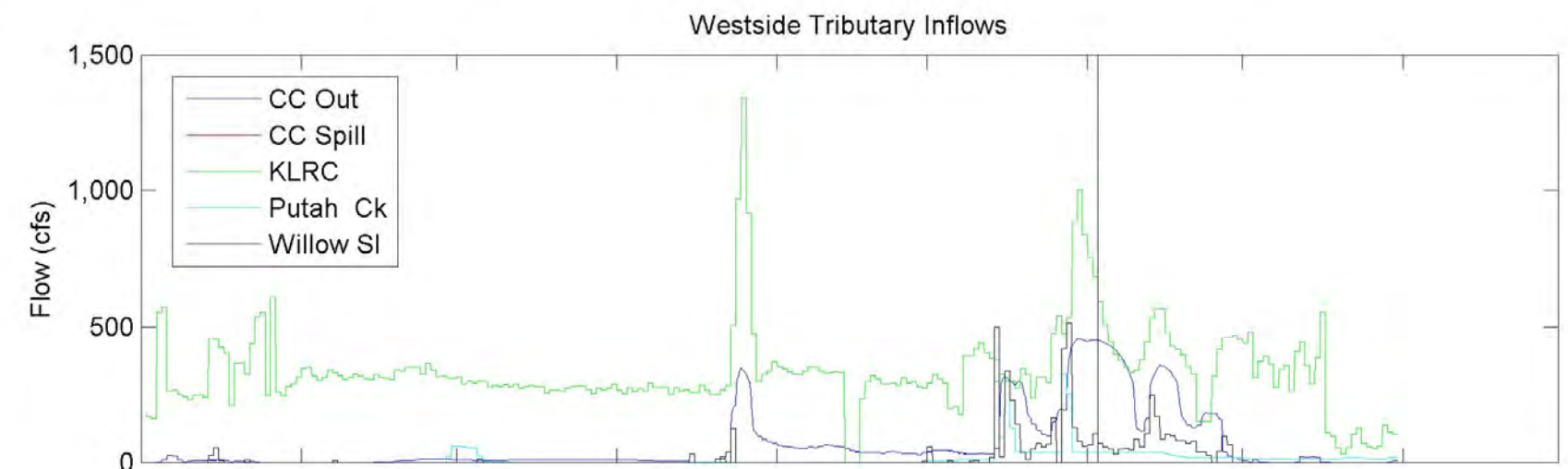
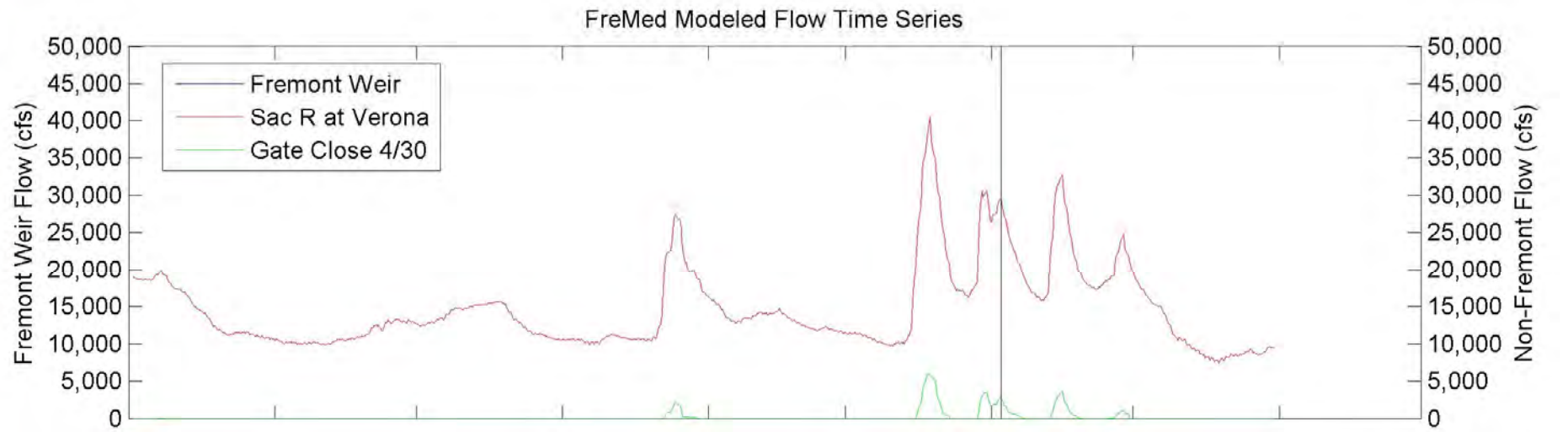
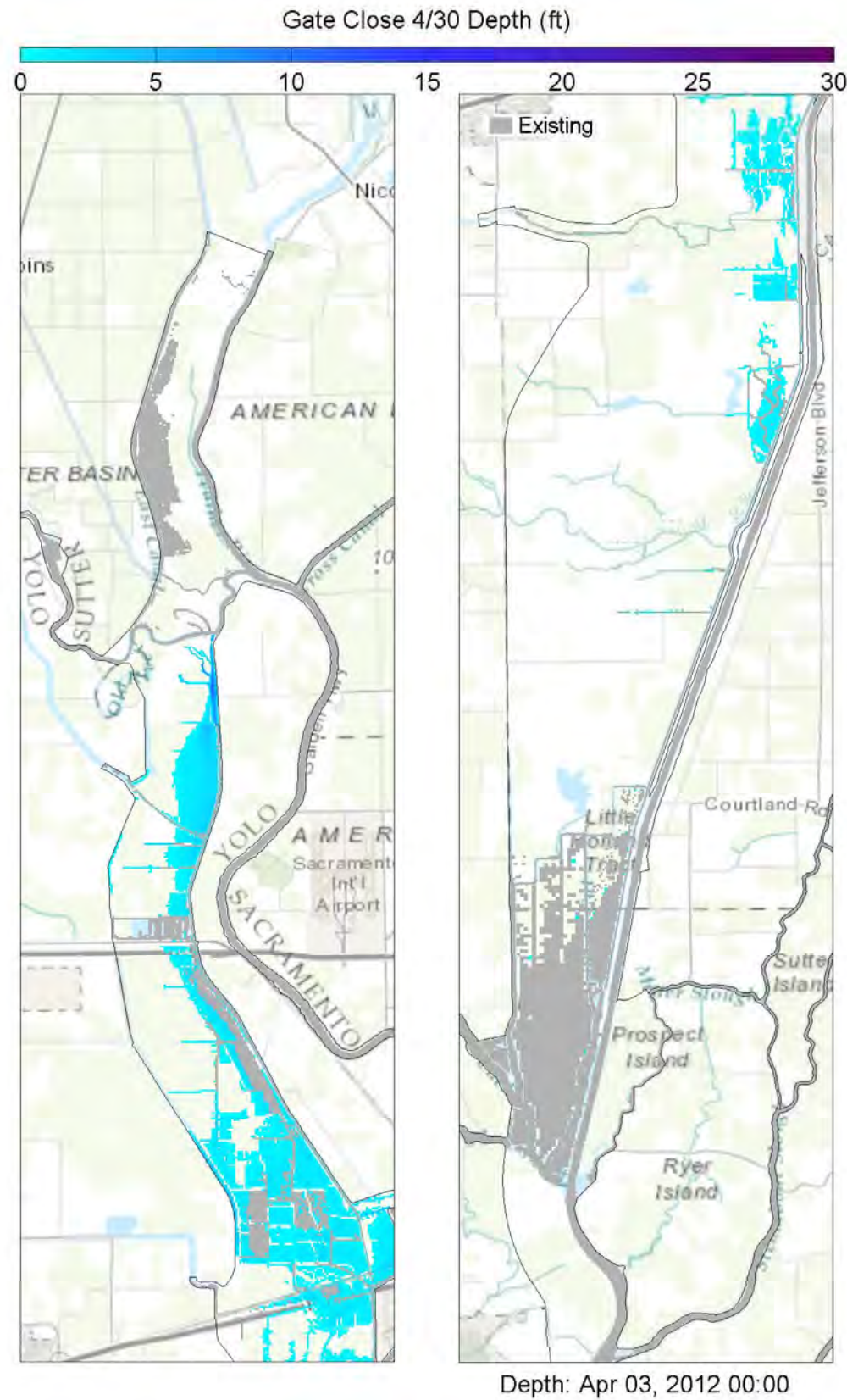
Notes: TUFLOW model results showing 2D inundation patterns (at specified time stamp) for existing and 4/30 gate closure (left panes), Yolo Bypass inflows (upper right panes), and wetted area for all five gate closures (lower right pane). The vertical bar in the right panes corresponds to the time stamp below the left panes, whereby the blue hatching represents 4/30 gate closure conditions as overlain by the grey hatching representing existing conditions.





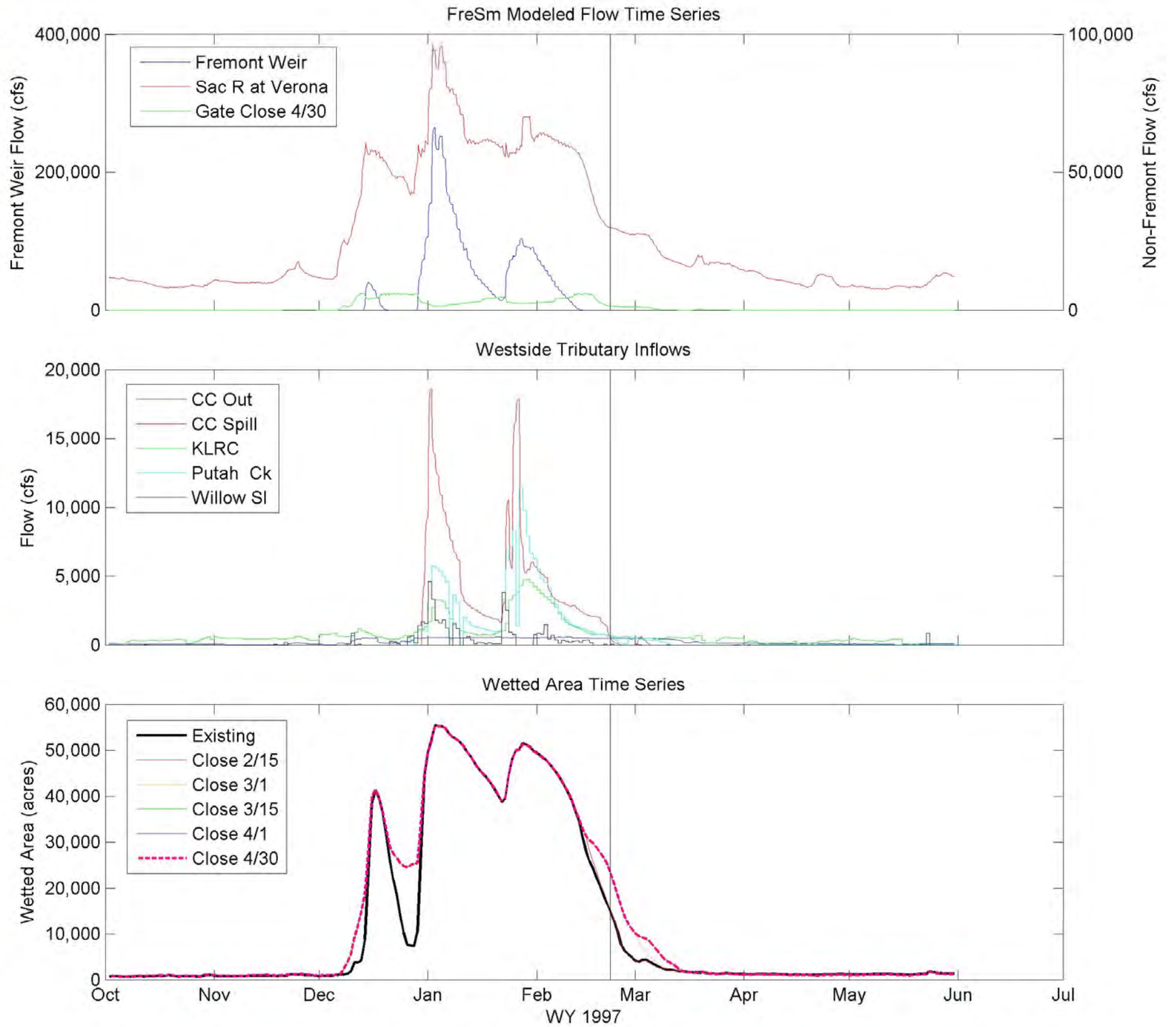
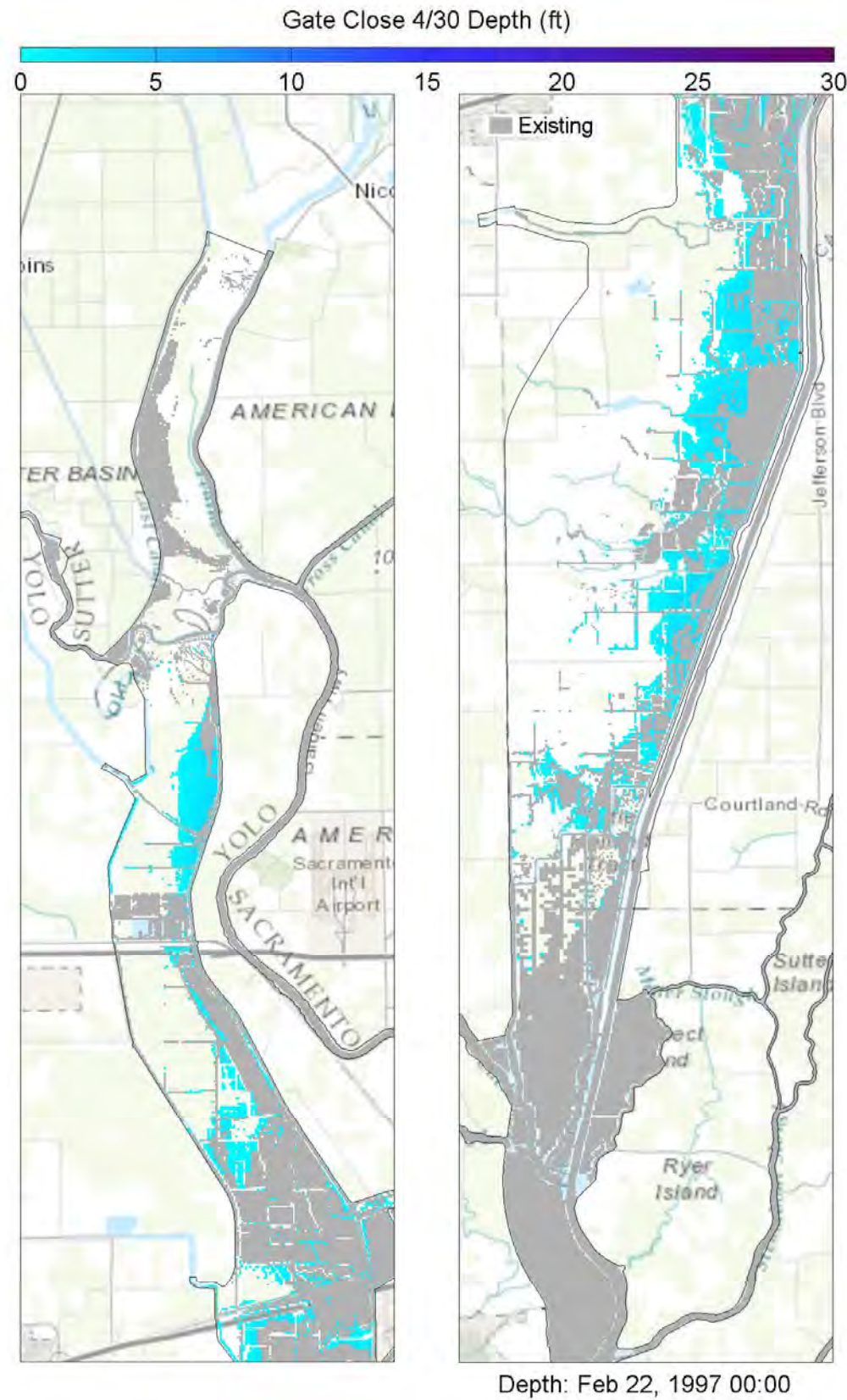
Notes: TUFLOW model results showing 2D inundation patterns (at specified time stamp) for existing and 4/30 gate closure (left panes), Yolo Bypass inflows (upper right panes), and wetted area for all five gate closures (lower right pane). The vertical bar in the right panes corresponds to the time stamp below the left panes, whereby the blue hatching represents 4/30 gate closure conditions as overlain by the grey hatching representing existing conditions.





Notes: TUFLOW model results showing 2D inundation patterns (at specified time stamp) for existing and 4/30 gate closure (left panes), Yolo Bypass inflows (upper right panes), and wetted area for all five gate closures (lower right pane). The vertical bar in the right panes corresponds to the time stamp below the left panes, whereby the blue hatching represents 4/30 gate closure conditions as overlain by the grey hatching representing existing conditions.





Notes: TUFLOW model results showing 2D inundation patterns (at specified time stamp) for existing and 4/30 gate closure (left panes), Yolo Bypass inflows (upper right panes), and wetted area for all five gate closures (lower right pane). The vertical bar in the right panes corresponds to the time stamp below the left panes, whereby the blue hatching represents 4/30 gate closure conditions as overlain by the grey hatching representing existing conditions.



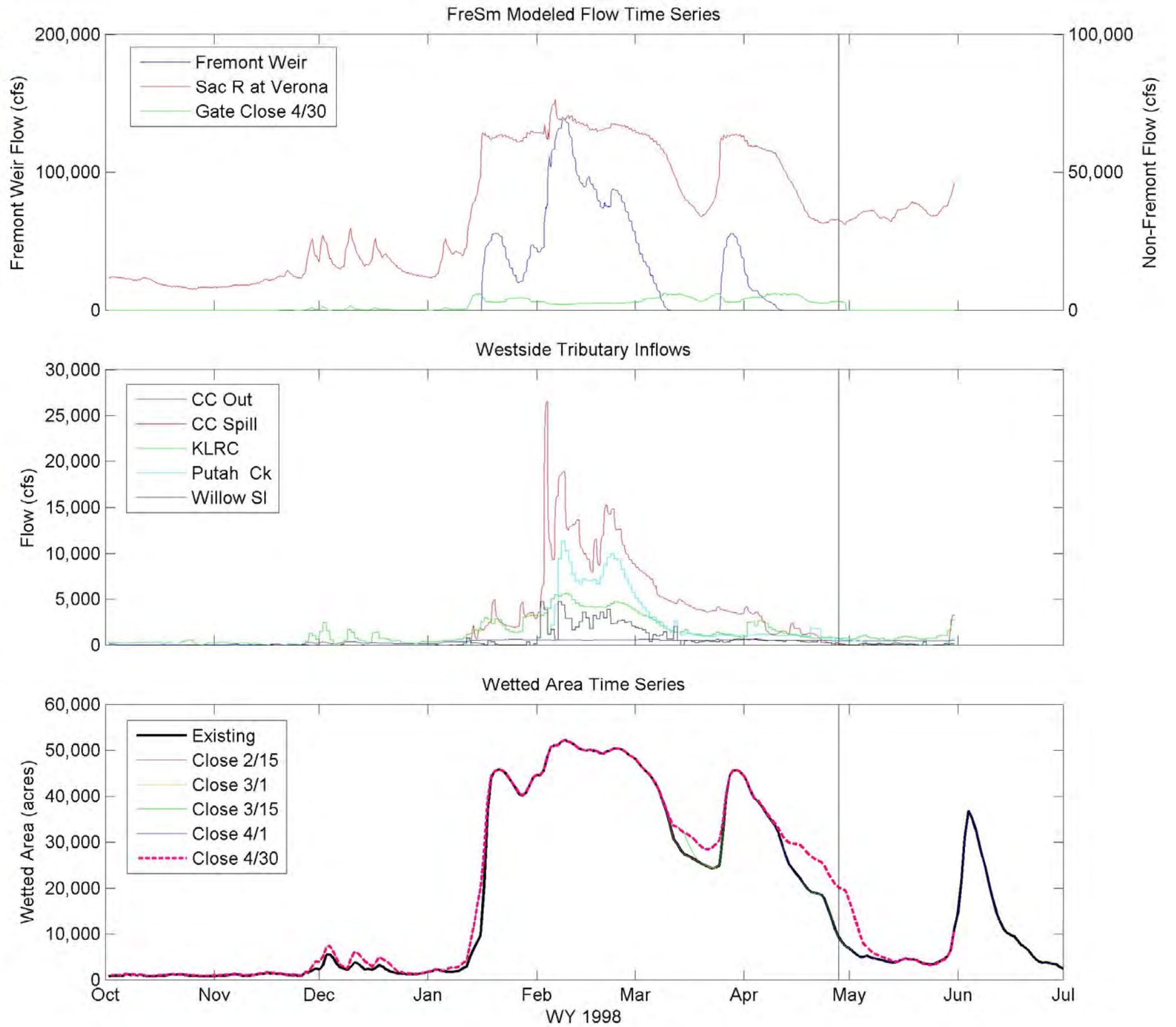
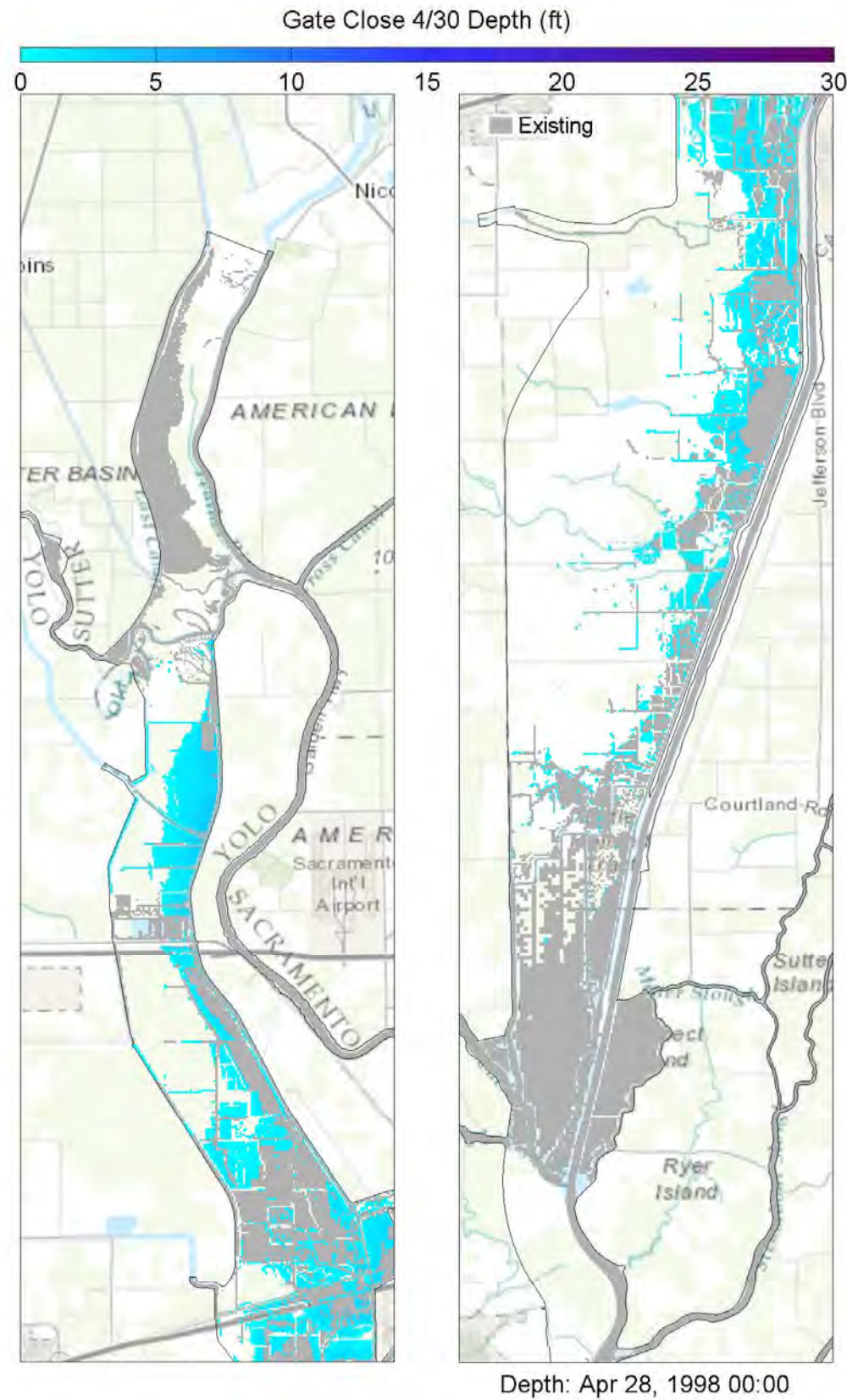
Yolo Bypass Salmonid Habitat Restoration and Fish Passage

**Wetted Area Comparison for WY 1997 for FreSm**

Prepared for DWR

Created By: SJB

**Figure E33**



Notes: TUFLOW model results showing 2D inundation patterns (at specified time stamp) for existing and 4/30 gate closure (left panes), Yolo Bypass inflows (upper right panes), and wetted area for all five gate closures (lower right pane). The vertical bar in the right panes corresponds to the time stamp below the left panes, whereby the blue hatching represents 4/30 gate closure conditions as overlain by the grey hatching representing existing conditions.



Yolo Bypass Salmonid Habitat Restoration and Fish Passage

**Wetted Area Comparison for WY 1998 for FreSm**

Prepared for DWR

Created By: SJB

**Figure E34**