

Notes: TUFLOW model results showing 2D inundation patterns (at specified time stamp) for existing and 4/30 gate closure (left panes), Yolo Bypass inflows (upper right panes), and wetted area for all five gate closures (lower right pane). The vertical bar in the right panes corresponds to the time stamp below the left panes, whereby the blue hatching represents 4/30 gate closure conditions as overlain by the grey hatching representing existing conditions.



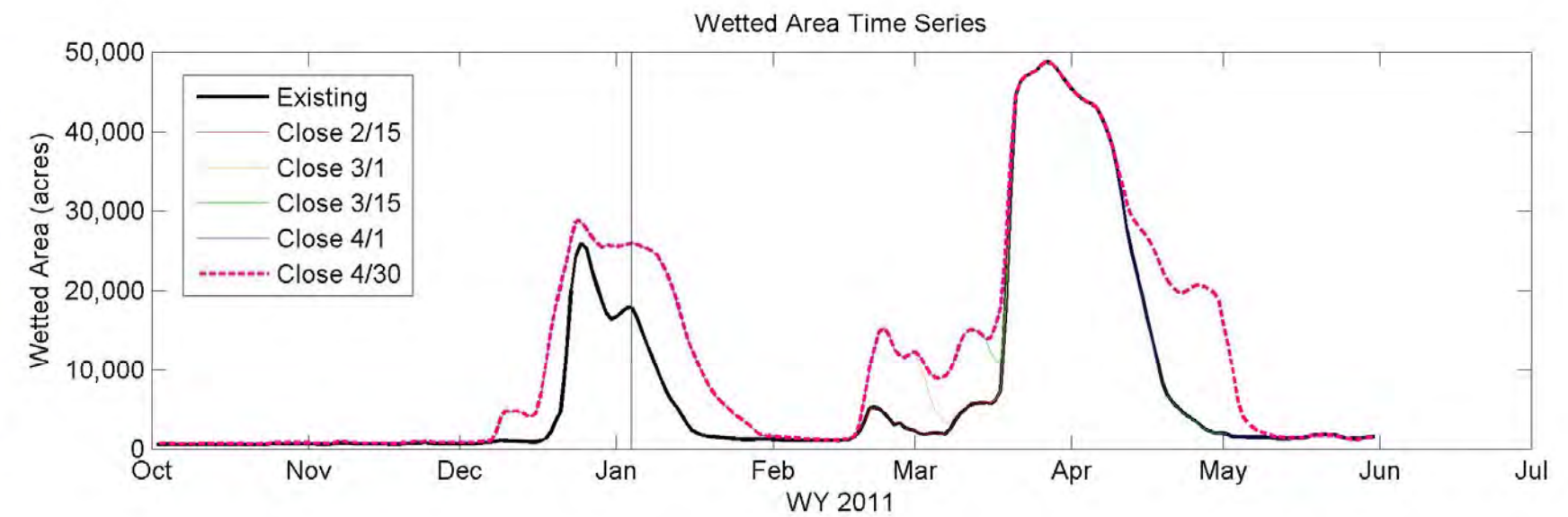
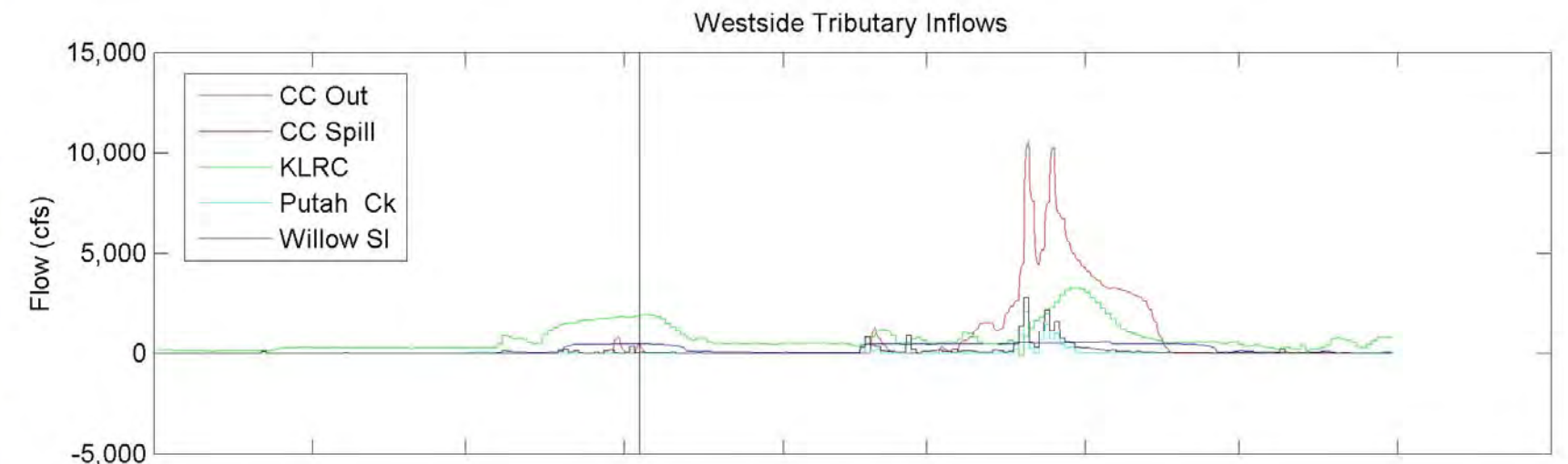
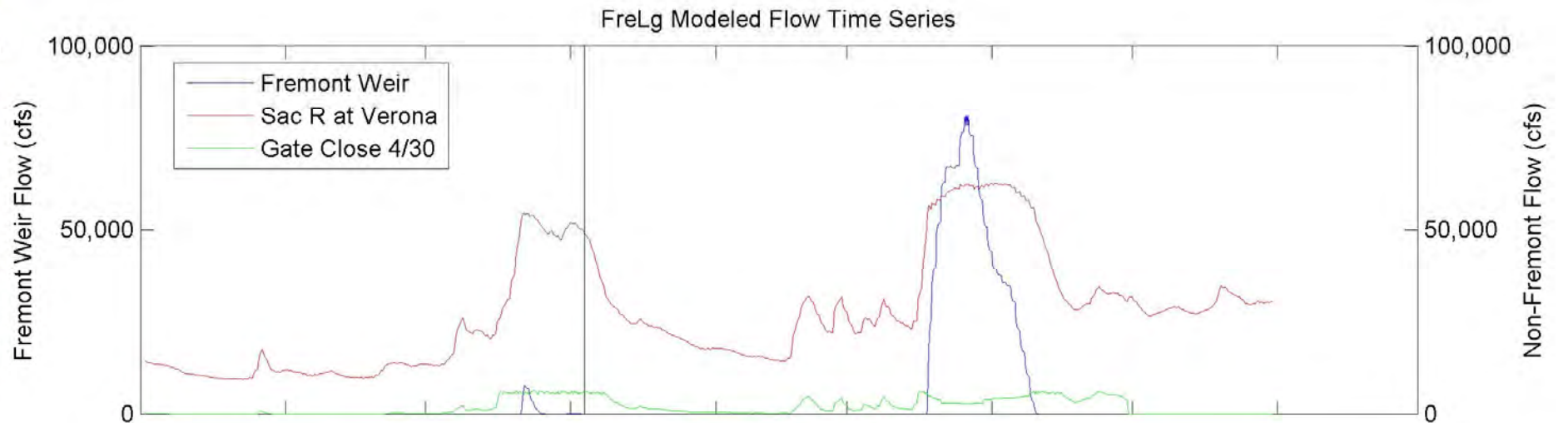
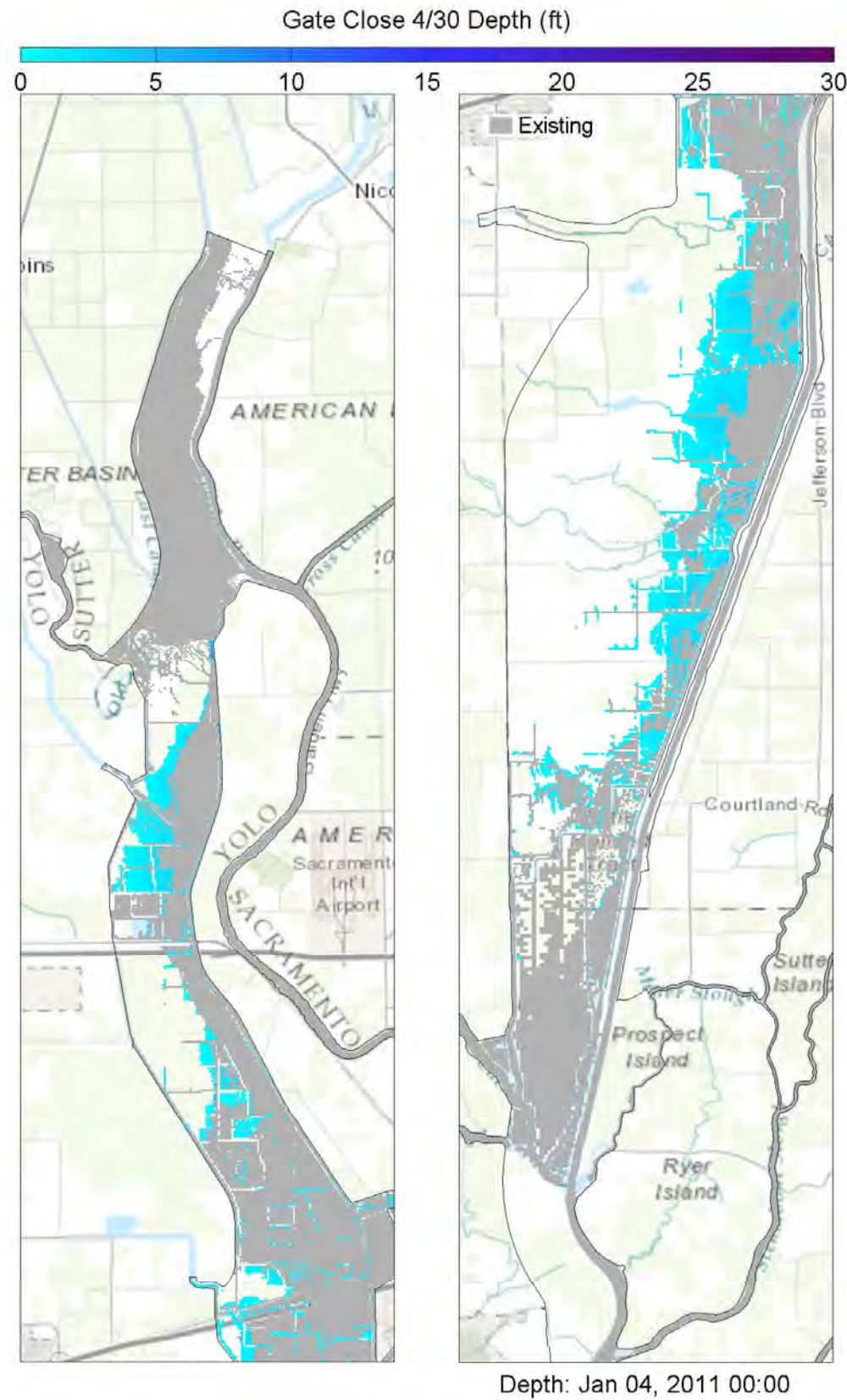
Yolo Bypass Salmonid Habitat Restoration and Fish Passage

Wetted Area Comparison for WY 2010 for FreLg

Prepared for DWR

Created By: SJB

Figure E14



Notes: TUFLOW model results showing 2D inundation patterns (at specified time stamp) for existing and 4/30 gate closure (left panes), Yolo Bypass inflows (upper right panes), and wetted area for all five gate closures (lower right pane). The vertical bar in the right panes corresponds to the time stamp below the left panes, whereby the blue hatching represents 4/30 gate closure conditions as overlain by the grey hatching representing existing conditions.



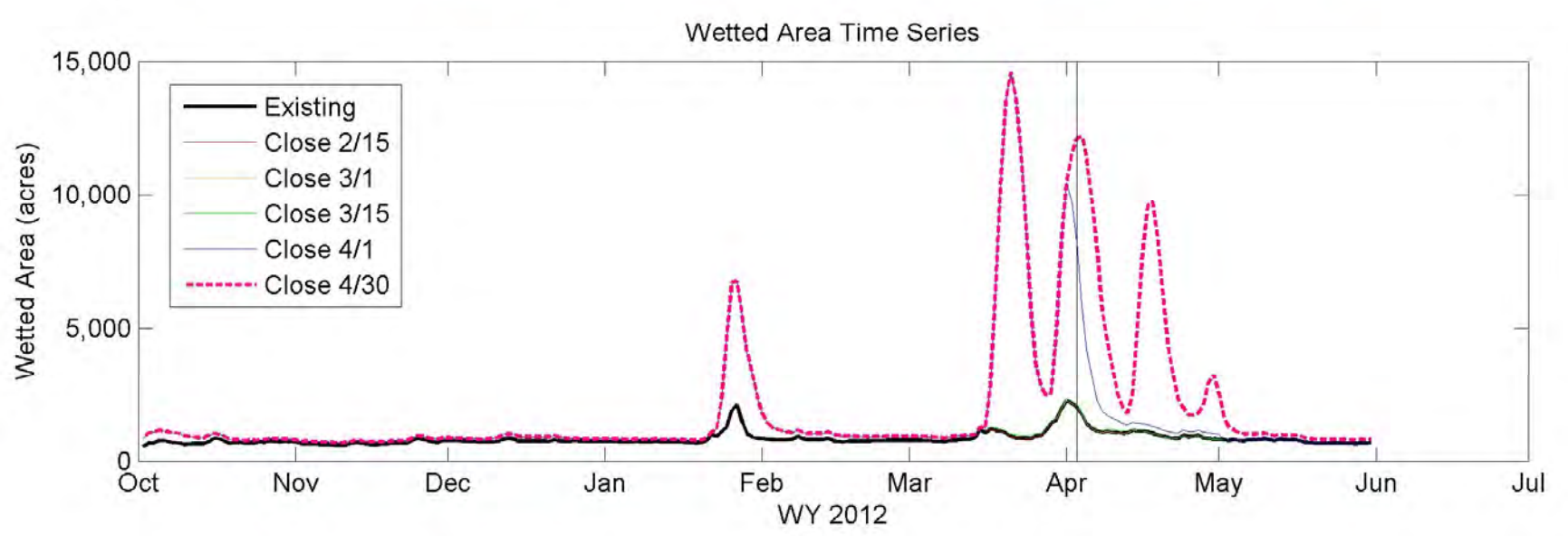
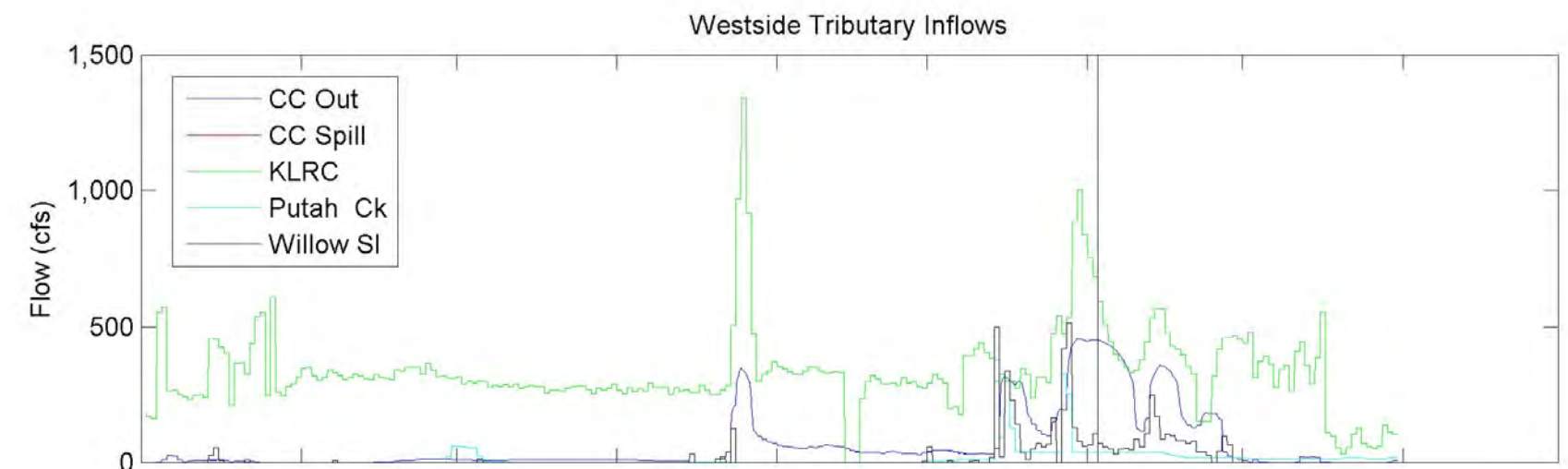
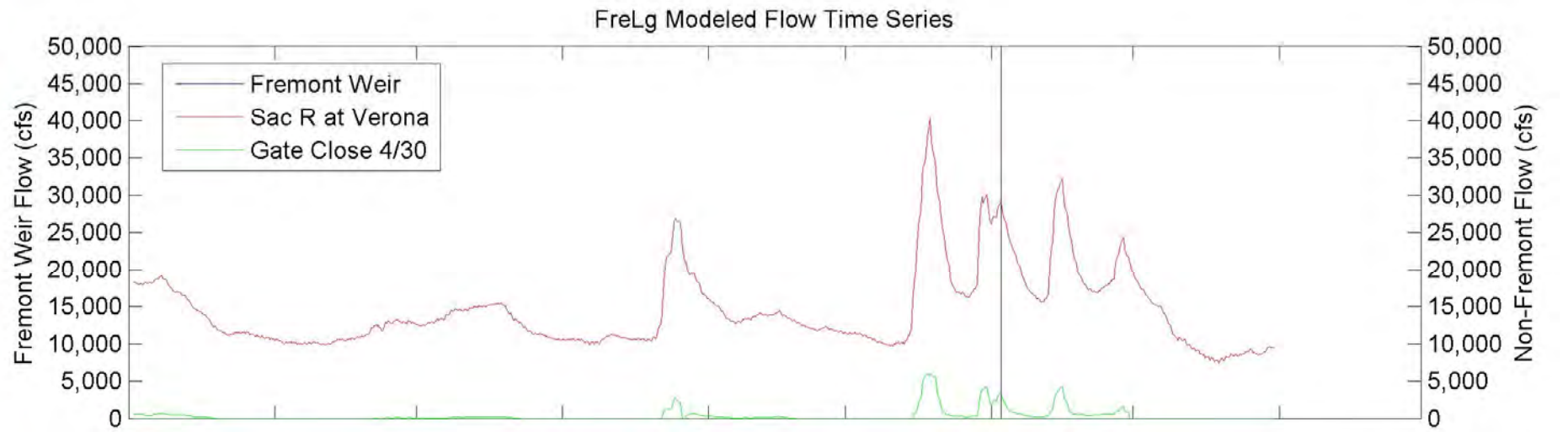
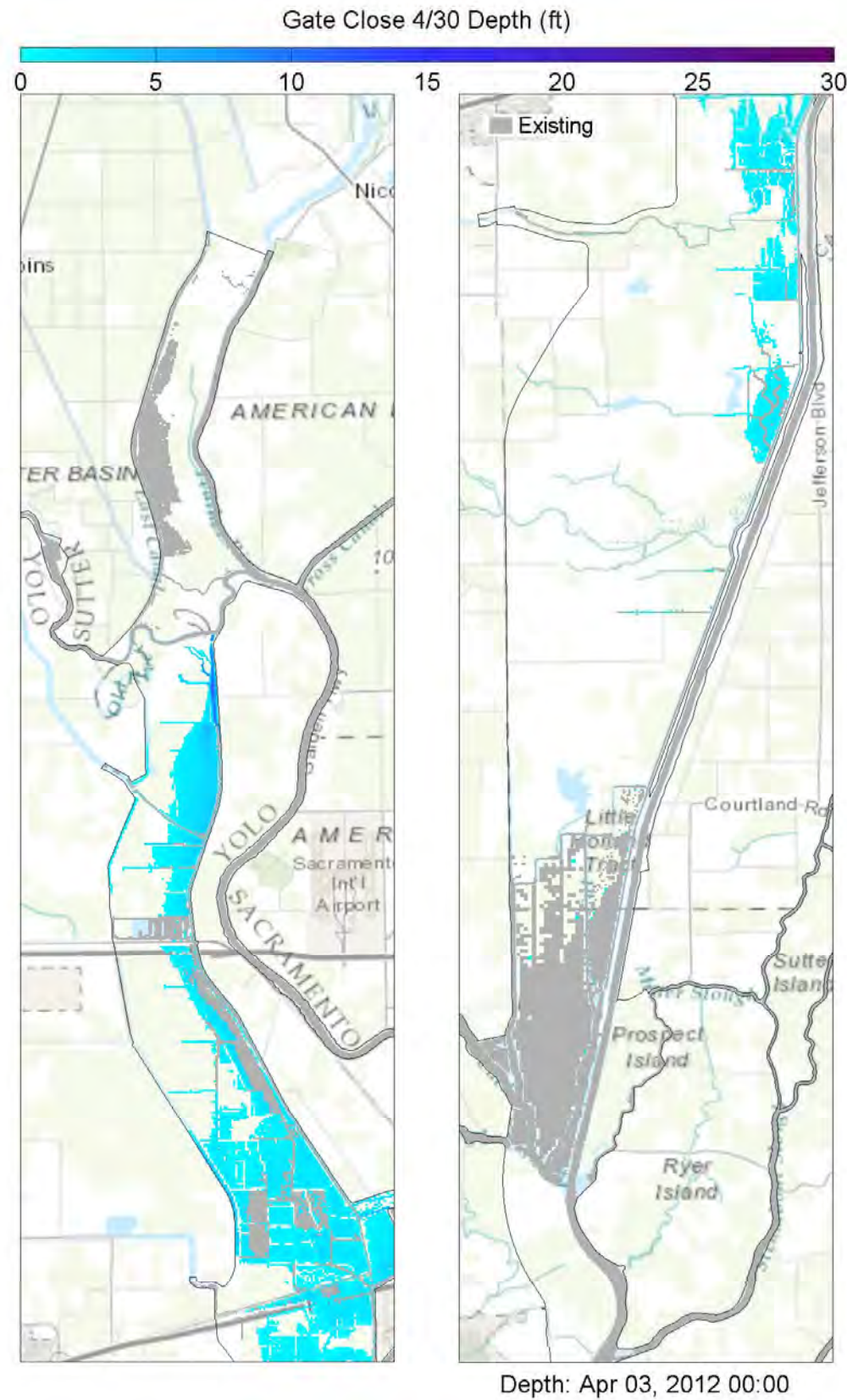
Yolo Bypass Salmonid Habitat Restoration and Fish Passage

Wetted Area Comparison for WY 2011 for FreLg

Prepared for DWR

Created By: SJB

Figure E15



Notes: TUFLOW model results showing 2D inundation patterns (at specified time stamp) for existing and 4/30 gate closure (left panes), Yolo Bypass inflows (upper right panes), and wetted area for all five gate closures (lower right pane). The vertical bar in the right panes corresponds to the time stamp below the left panes, whereby the blue hatching represents 4/30 gate closure conditions as overlain by the grey hatching representing existing conditions.



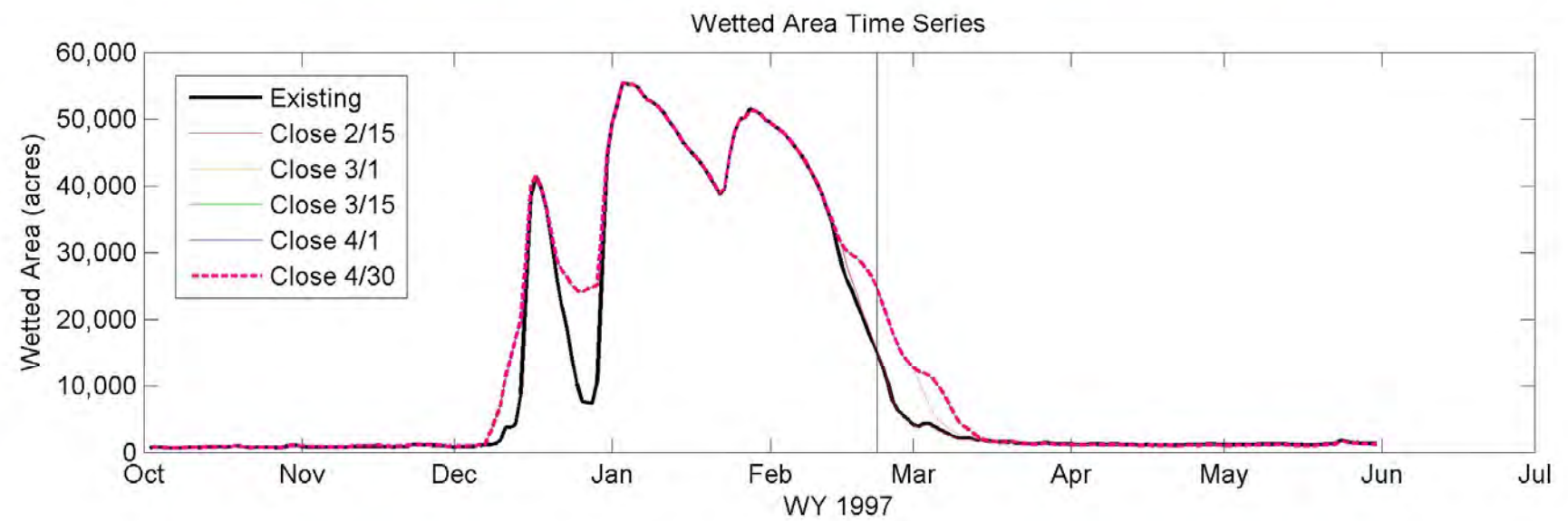
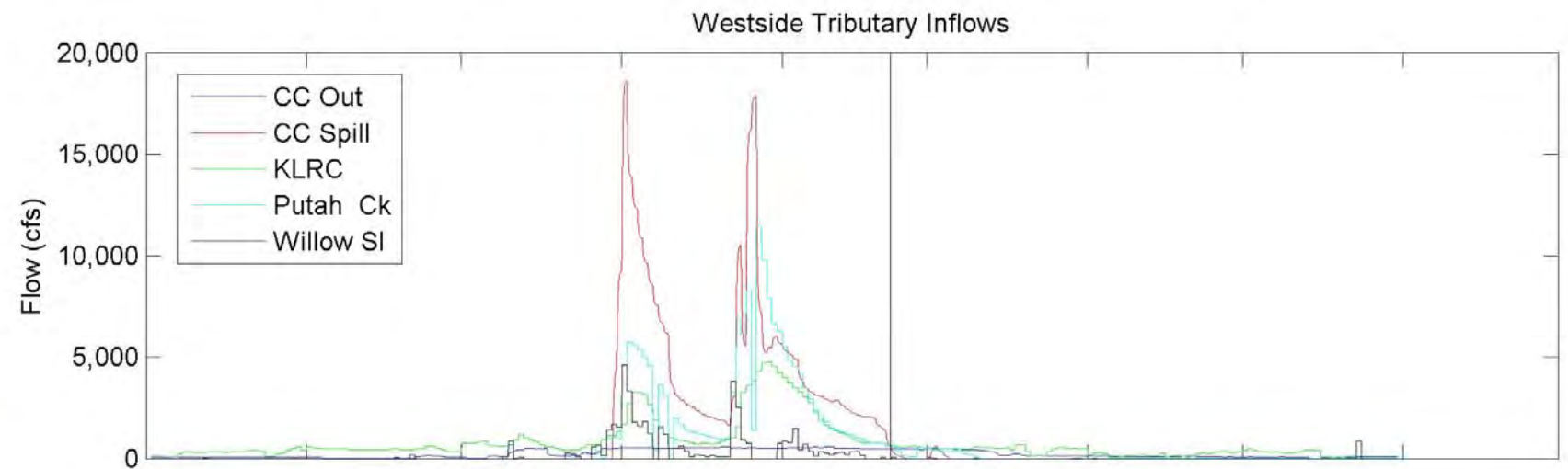
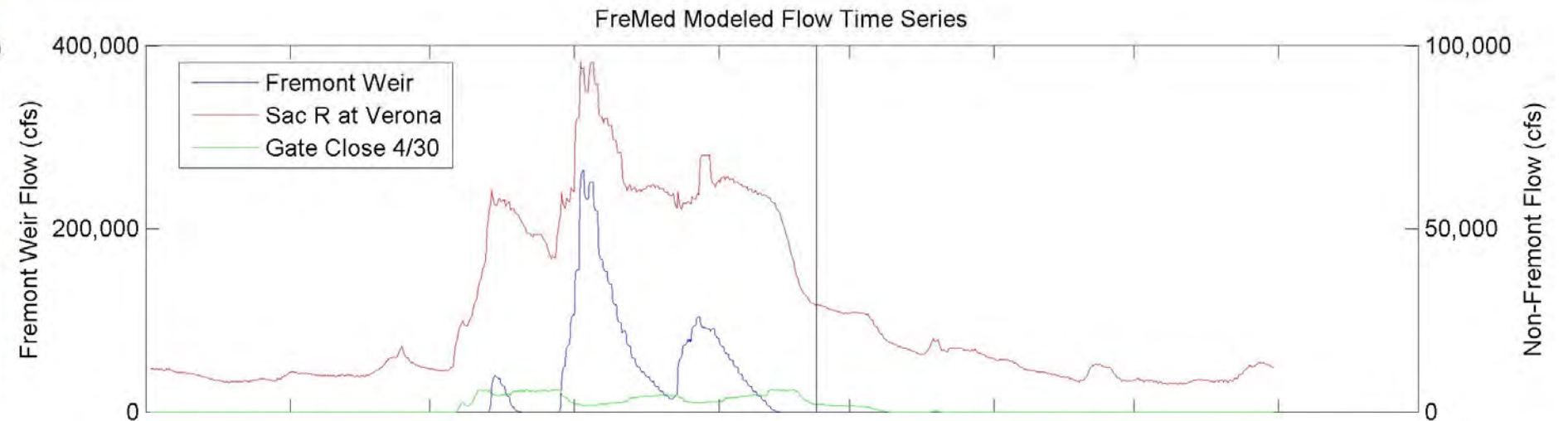
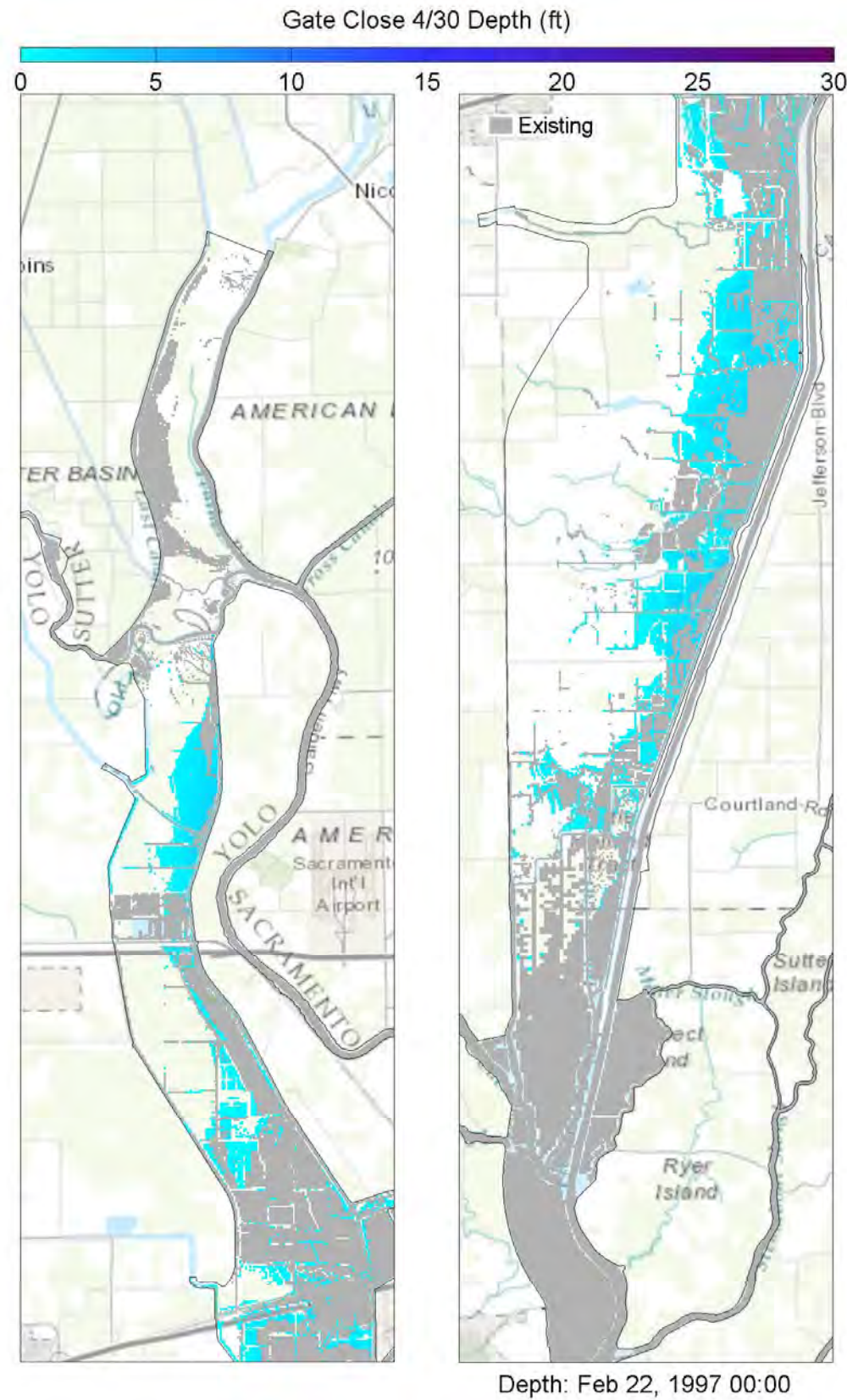
Yolo Bypass Salmonid Habitat Restoration and Fish Passage

Wetted Area Comparison for WY 2012 for FreLg

Prepared for DWR

Created By: SJB

Figure E16



Notes: TUFLOW model results showing 2D inundation patterns (at specified time stamp) for existing and 4/30 gate closure (left panes), Yolo Bypass inflows (upper right panes), and wetted area for all five gate closures (lower right pane). The vertical bar in the right panes corresponds to the time stamp below the left panes, whereby the blue hatching represents 4/30 gate closure conditions as overlain by the grey hatching representing existing conditions.



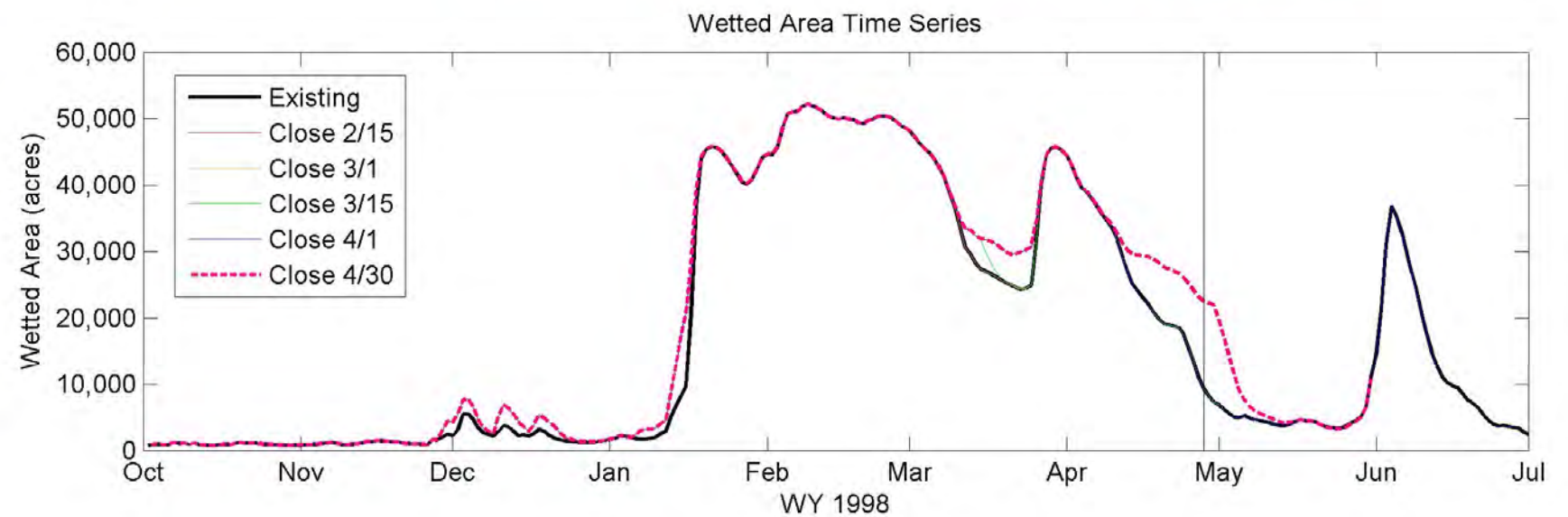
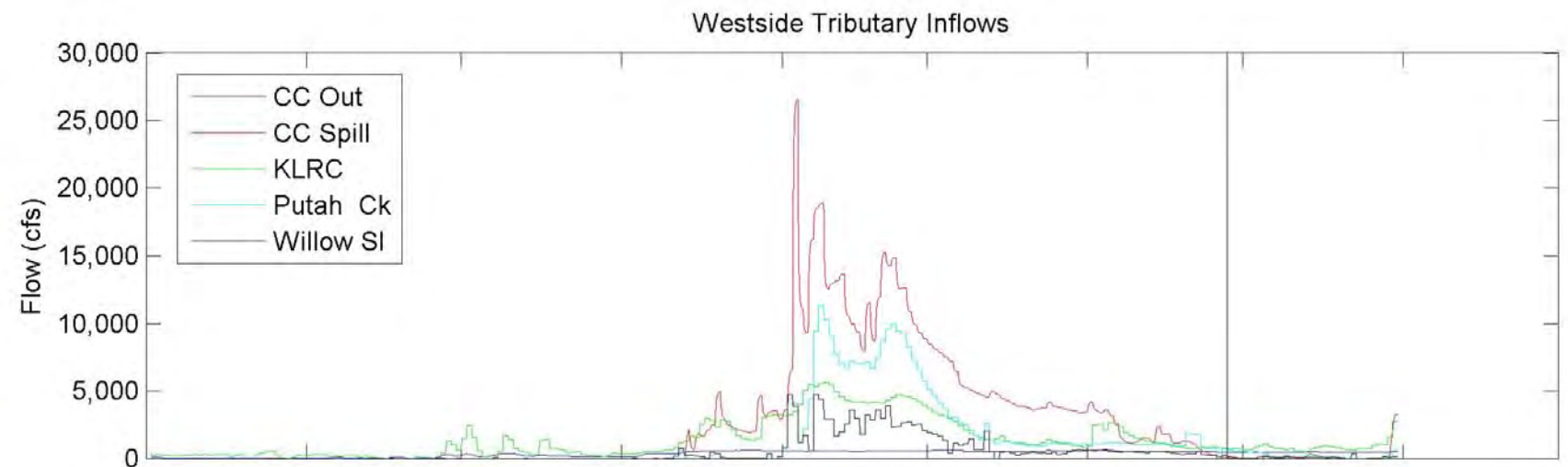
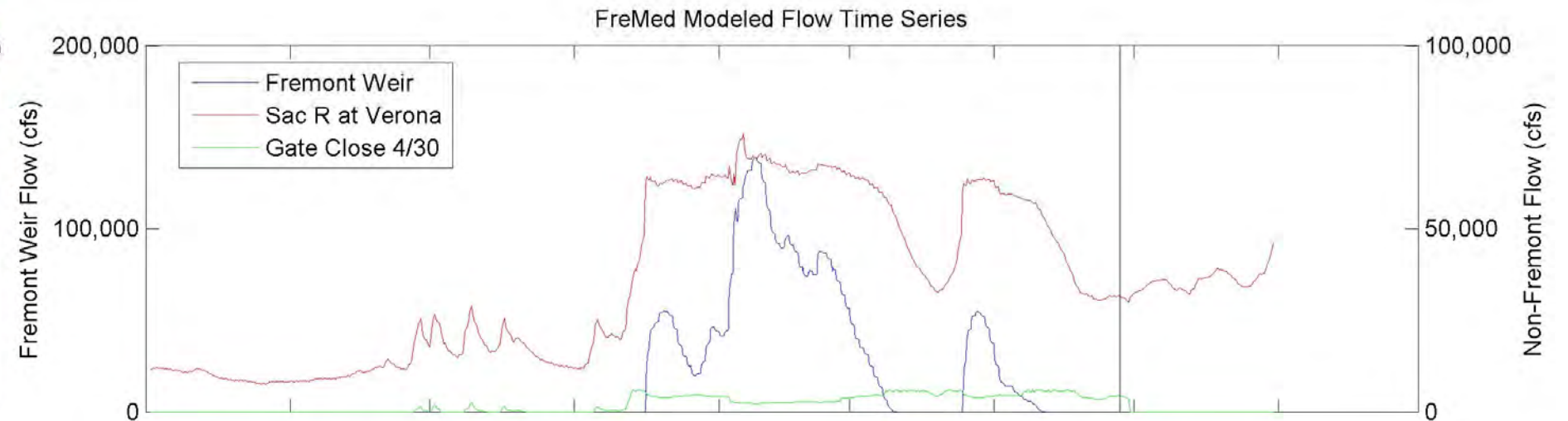
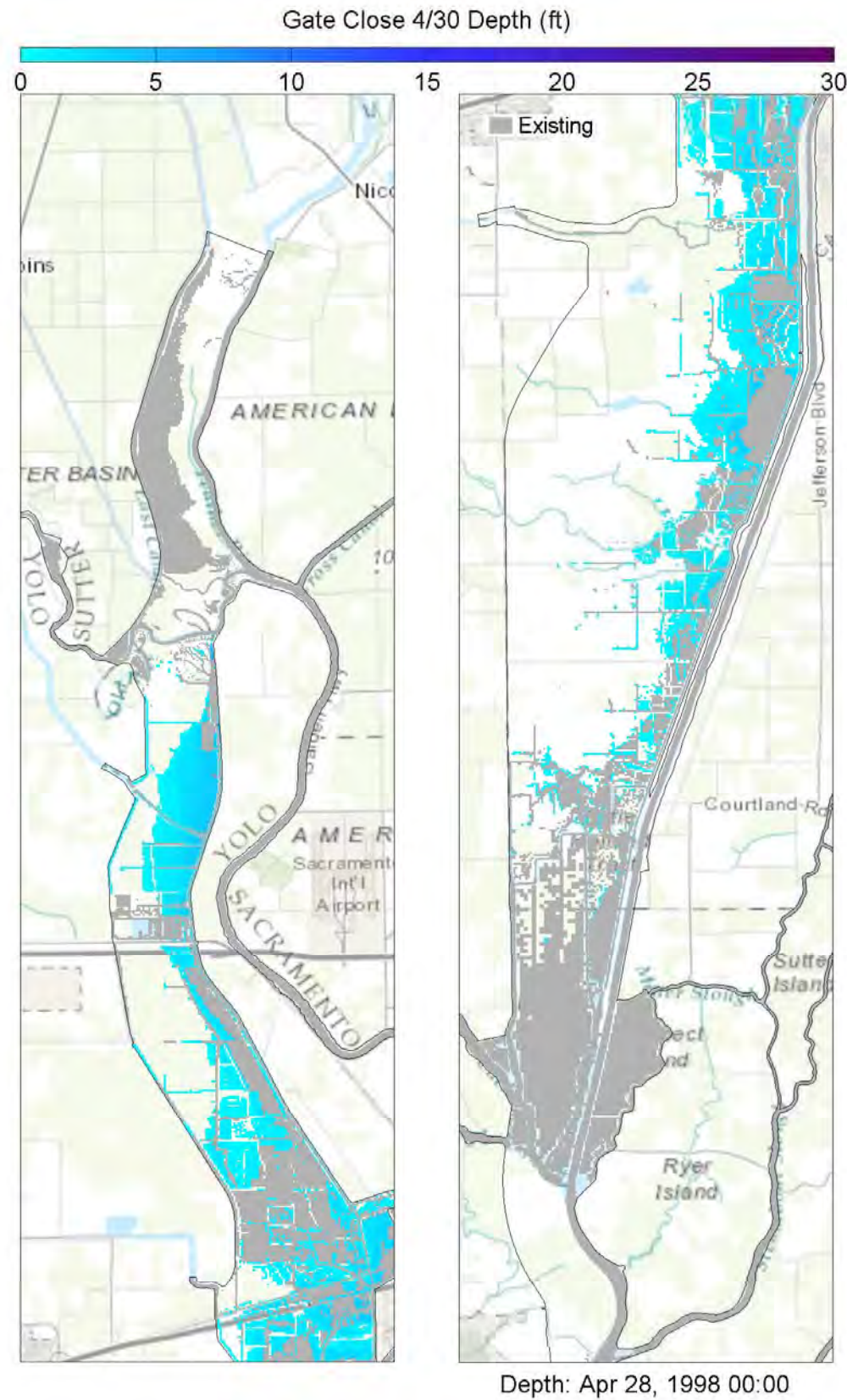
Yolo Bypass Salmonid Habitat Restoration and Fish Passage

Wetted Area Comparison for WY 1997 for FreMed

Prepared for DWR

Created By: SJB

Figure E17



Notes: TUFLOW model results showing 2D inundation patterns (at specified time stamp) for existing and 4/30 gate closure (left panes), Yolo Bypass inflows (upper right panes), and wetted area for all five gate closures (lower right pane). The vertical bar in the right panes corresponds to the time stamp below the left panes, whereby the blue hatching represents 4/30 gate closure conditions as overlain by the grey hatching representing existing conditions.



Yolo Bypass Salmonid Habitat Restoration and Fish Passage

Wetted Area Comparison for WY 1998 for FreMed

Prepared for DWR

Created By: SJB

Figure E18