

Notes: TUFLOW model results showing 2D inundation patterns (at specified time stamp) for existing and 4/30 gate closure (left panes), Yolo Bypass inflows (upper right panes), and wetted area for all five gate closures (lower right pane). The vertical bar in the right panes corresponds to the time stamp below the left panes, whereby the blue hatching represents 4/30 gate closure conditions as overlain by the grey hatching representing existing conditions.



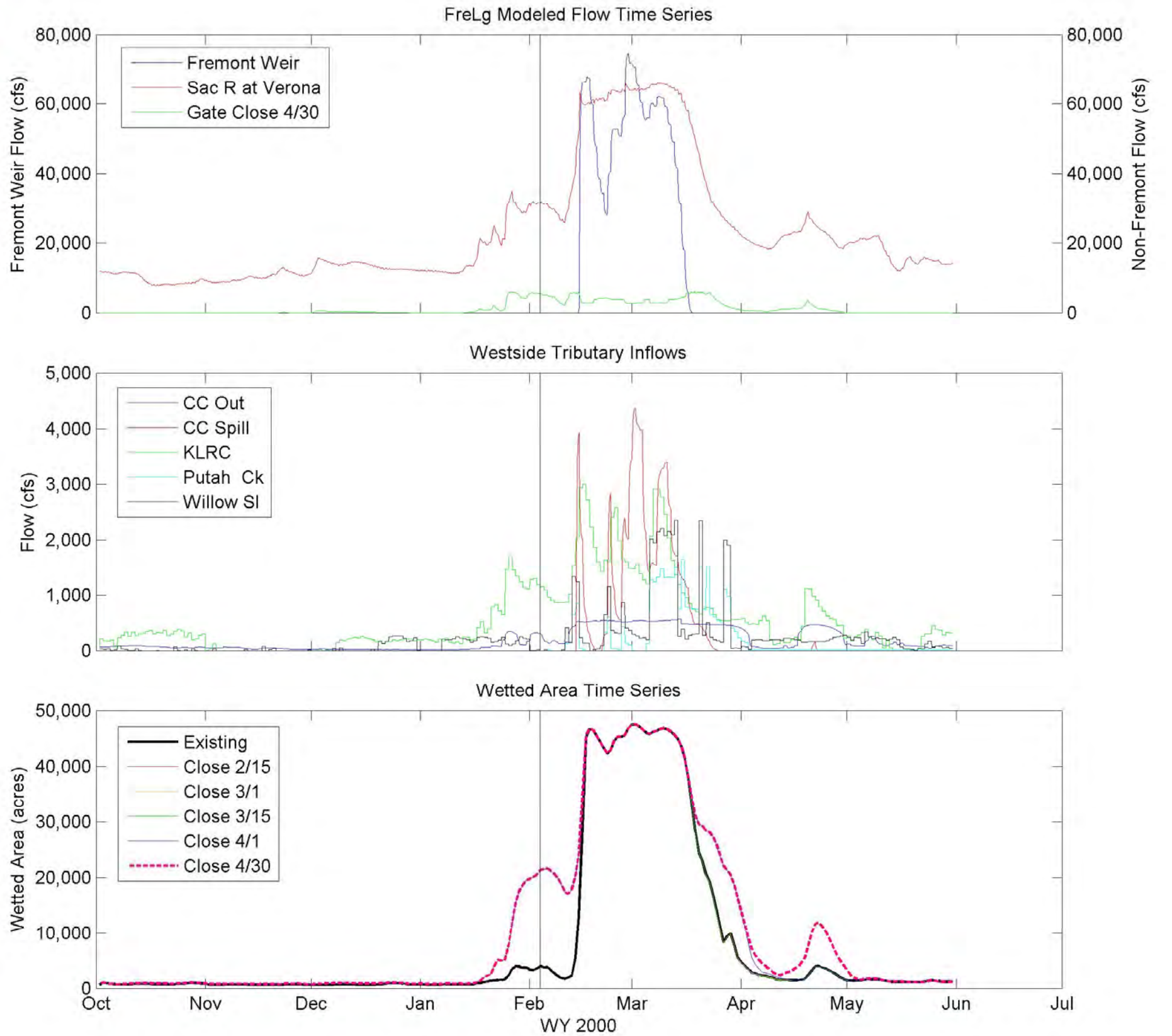
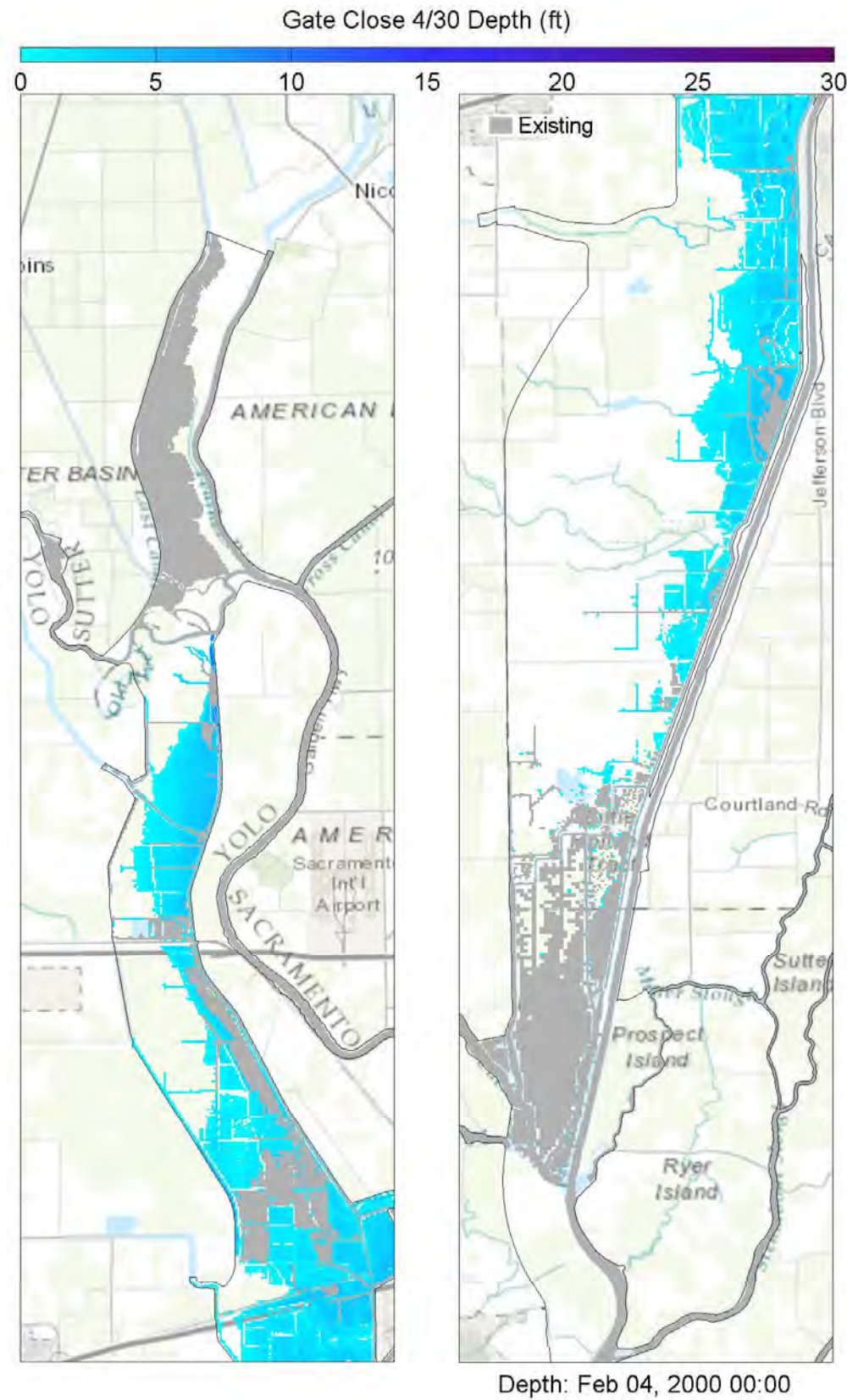
Yolo Bypass Salmonid Habitat Restoration and Fish Passage

Wetted Area Comparison for WY 1999 for FreLg

Prepared for DWR

Created By: SJB

Figure E3



Notes: TUFLOW model results showing 2D inundation patterns (at specified time stamp) for existing and 4/30 gate closure (left panes), Yolo Bypass inflows (upper right panes), and wetted area for all five gate closures (lower right pane). The vertical bar in the right panes corresponds to the time stamp below the left panes, whereby the blue hatching represents 4/30 gate closure conditions as overlain by the grey hatching representing existing conditions.



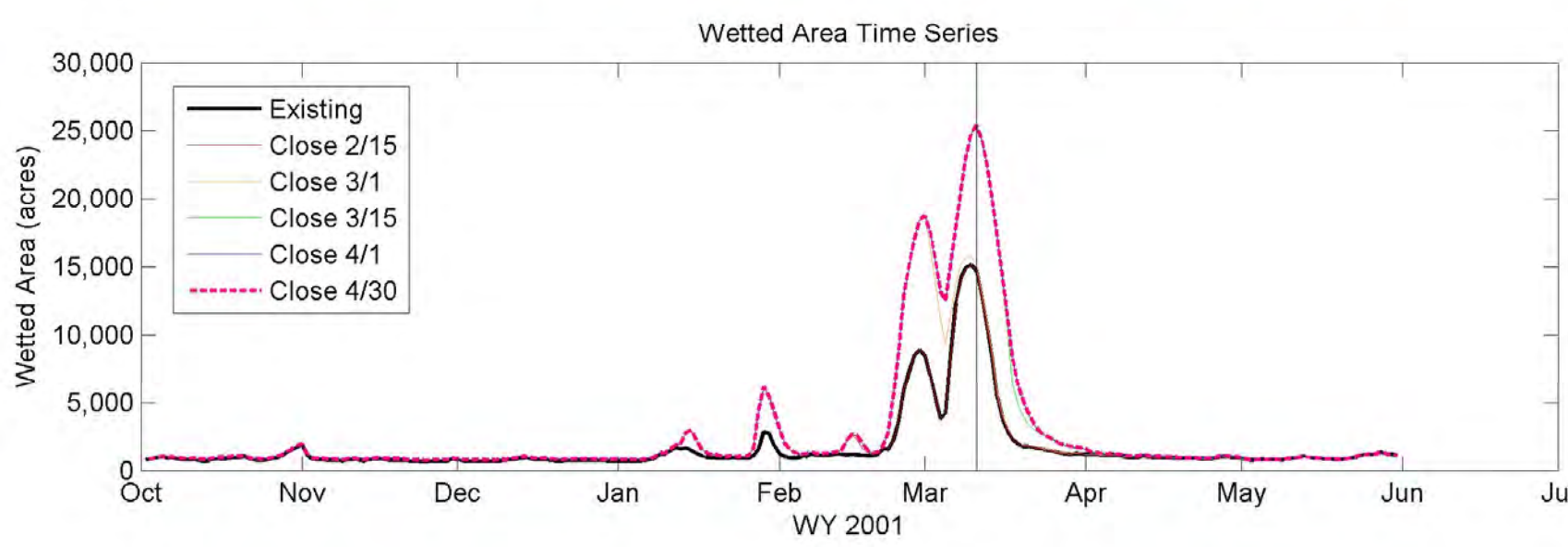
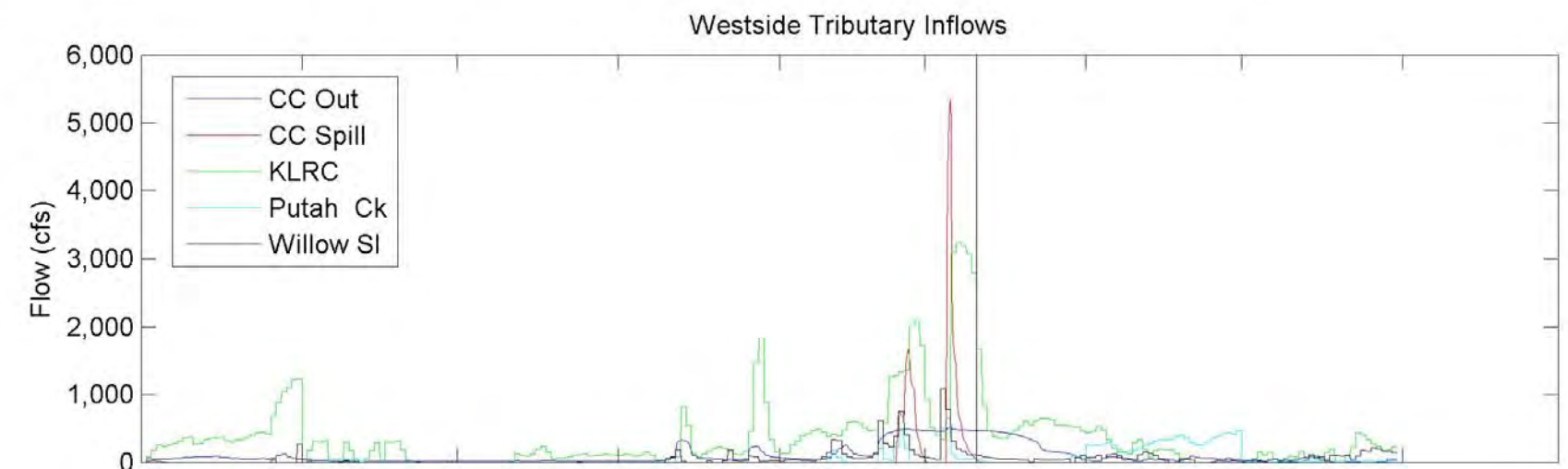
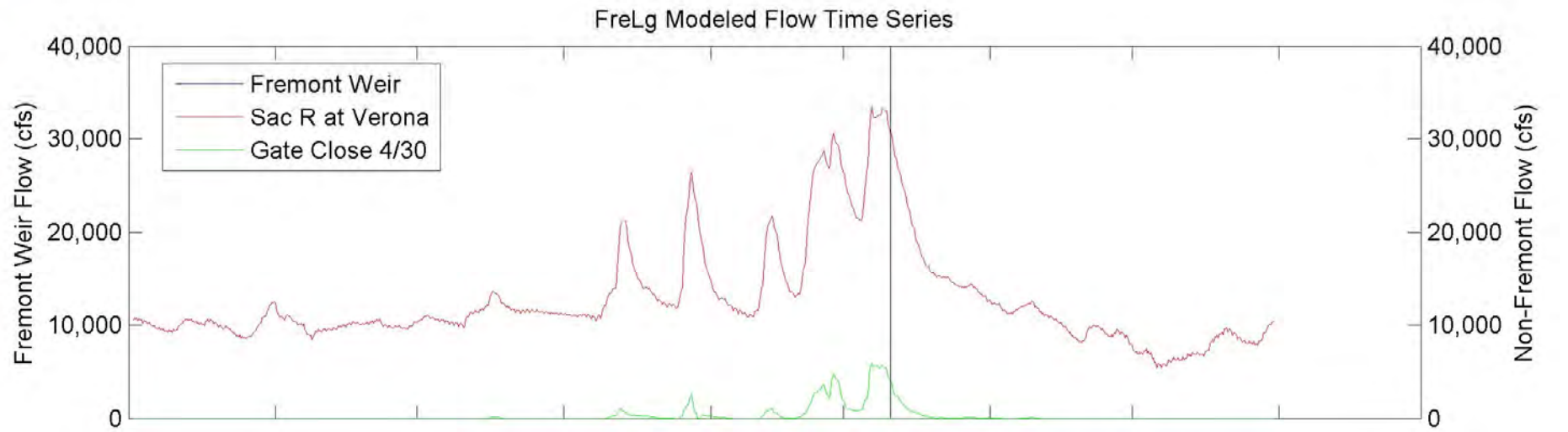
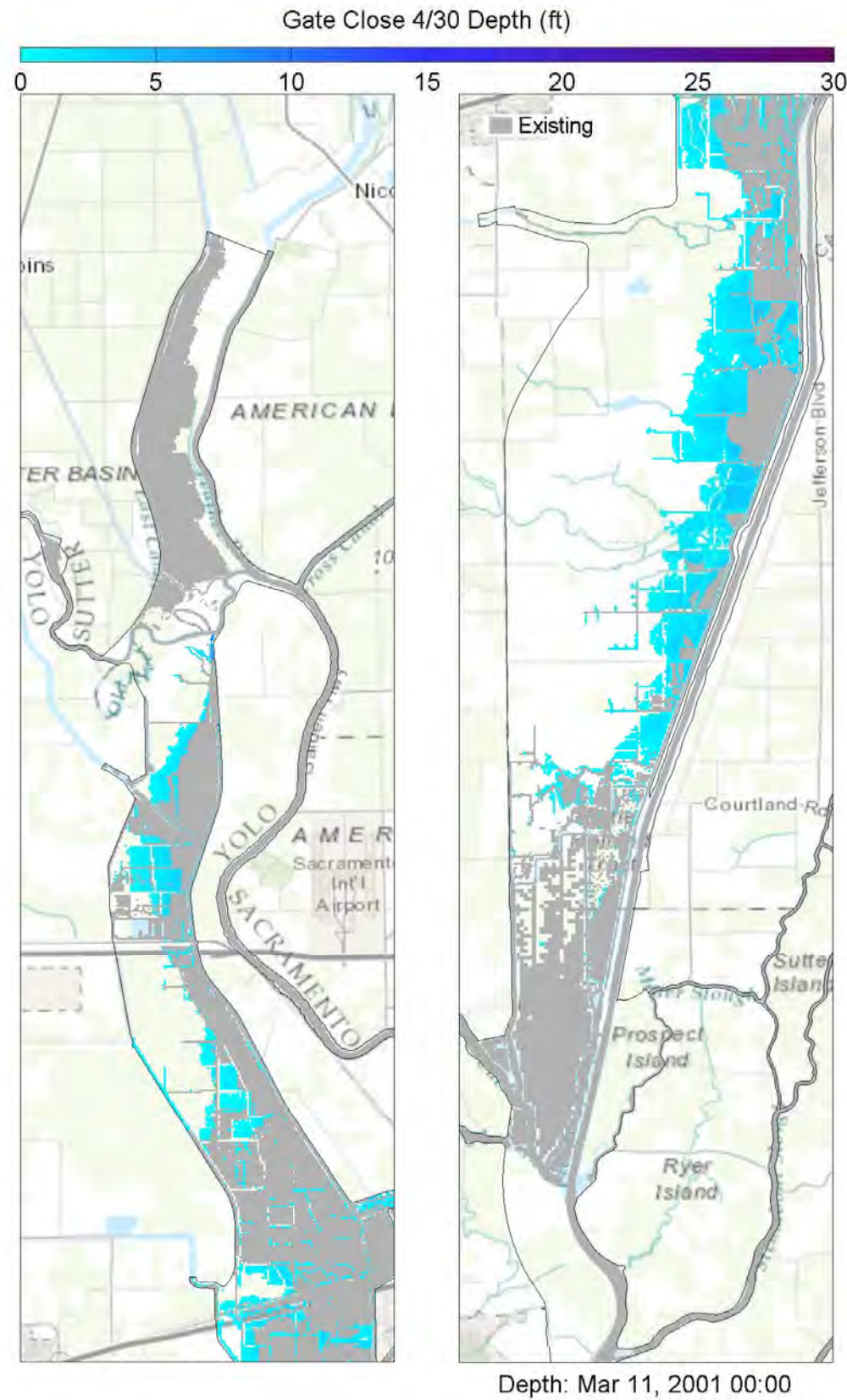
Yolo Bypass Salmonid Habitat Restoration and Fish Passage

Wetted Area Comparison for WY 2000 for FreLg

Prepared for DWR

Created By: SJB

Figure E4



Notes: TUFLOW model results showing 2D inundation patterns (at specified time stamp) for existing and 4/30 gate closure (left panes), Yolo Bypass inflows (upper right panes), and wetted area for all five gate closures (lower right pane). The vertical bar in the right panes corresponds to the time stamp below the left panes, whereby the blue hatching represents 4/30 gate closure conditions as overlain by the grey hatching representing existing conditions.



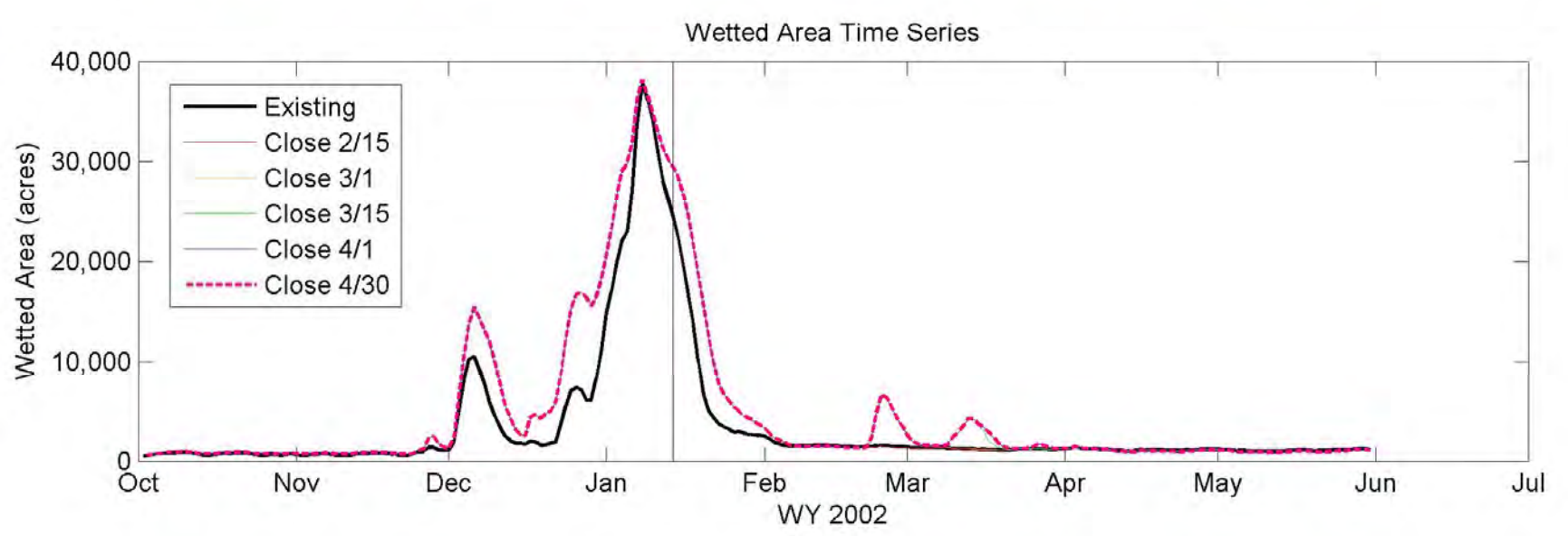
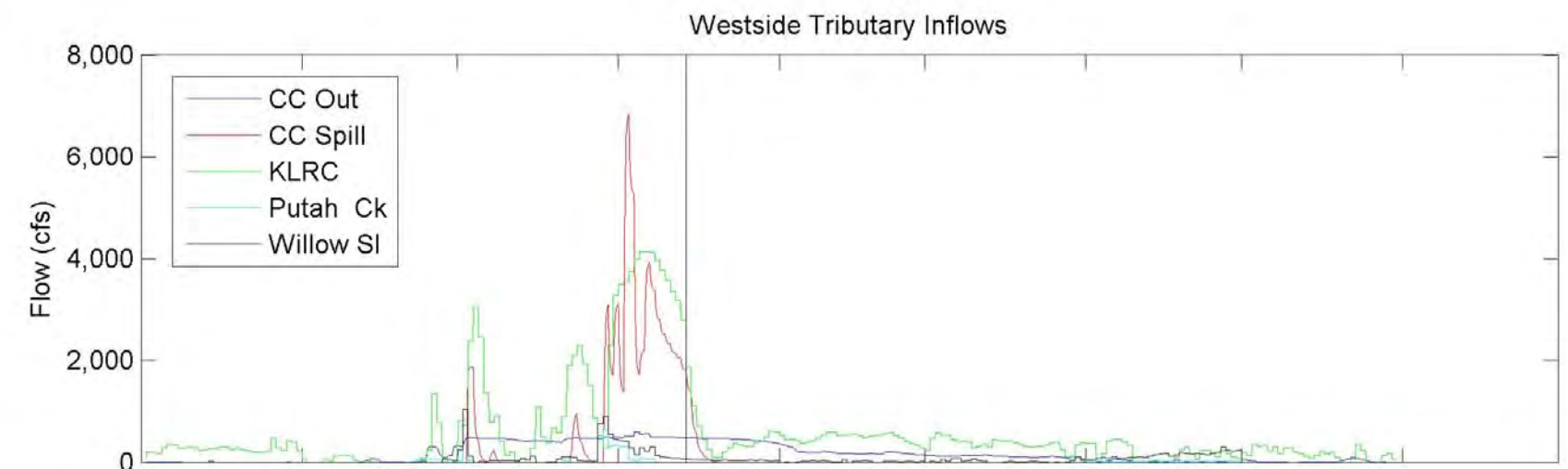
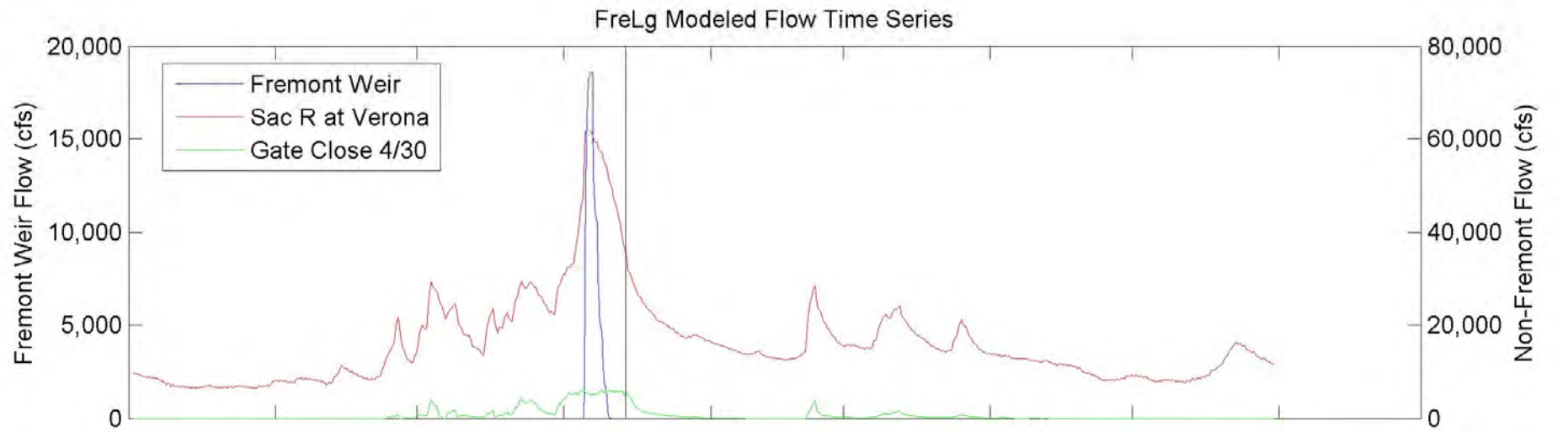
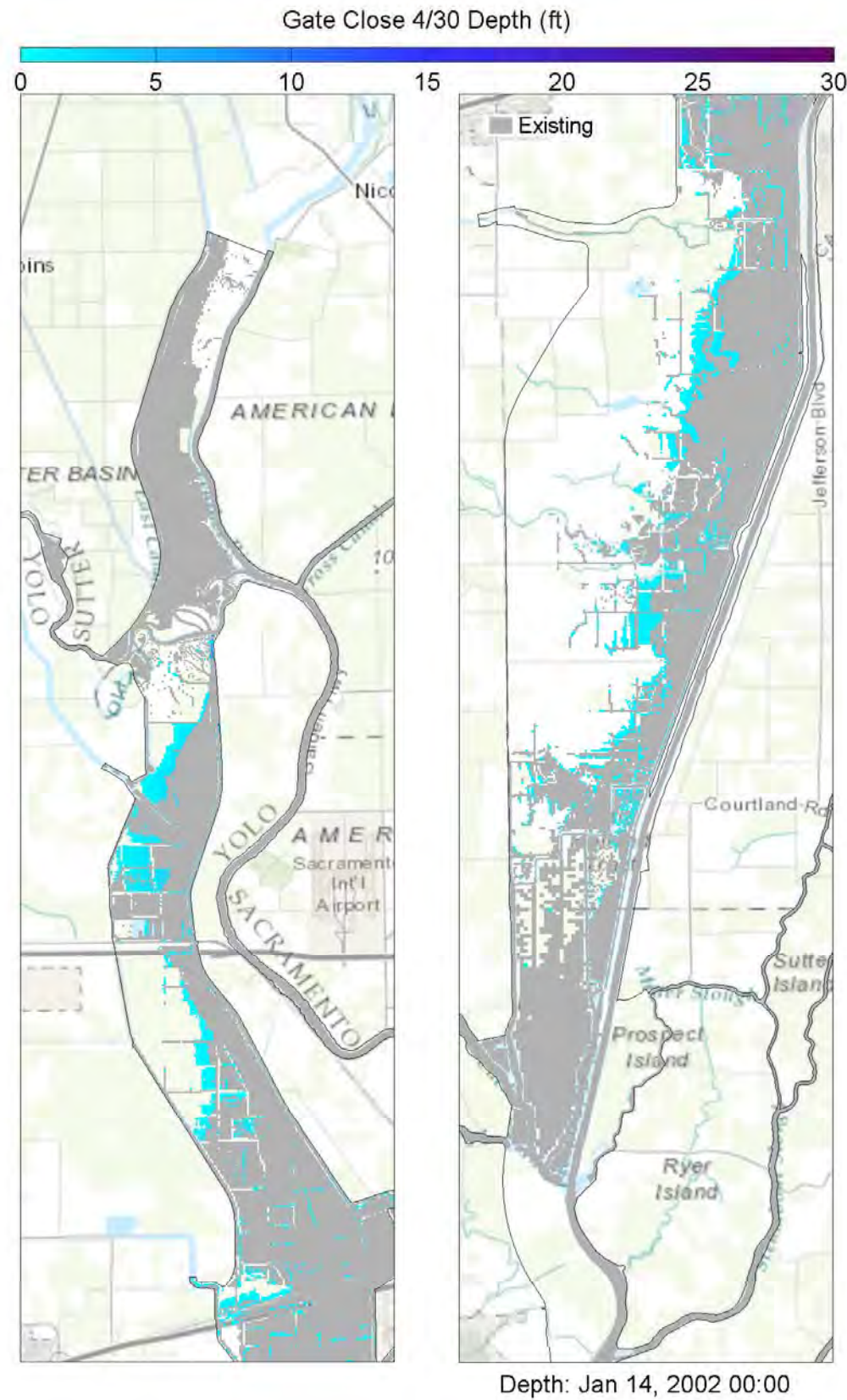
Yolo Bypass Salmonid Habitat Restoration and Fish Passage

Wetted Area Comparison for WY 2001 for FreLg

Prepared for DWR

Created By: SJB

Figure E5



Notes: TUFLOW model results showing 2D inundation patterns (at specified time stamp) for existing and 4/30 gate closure (left panes), Yolo Bypass inflows (upper right panes), and wetted area for all five gate closures (lower right pane). The vertical bar in the right panes corresponds to the time stamp below the left panes, whereby the blue hatching represents 4/30 gate closure conditions as overlain by the grey hatching representing existing conditions.



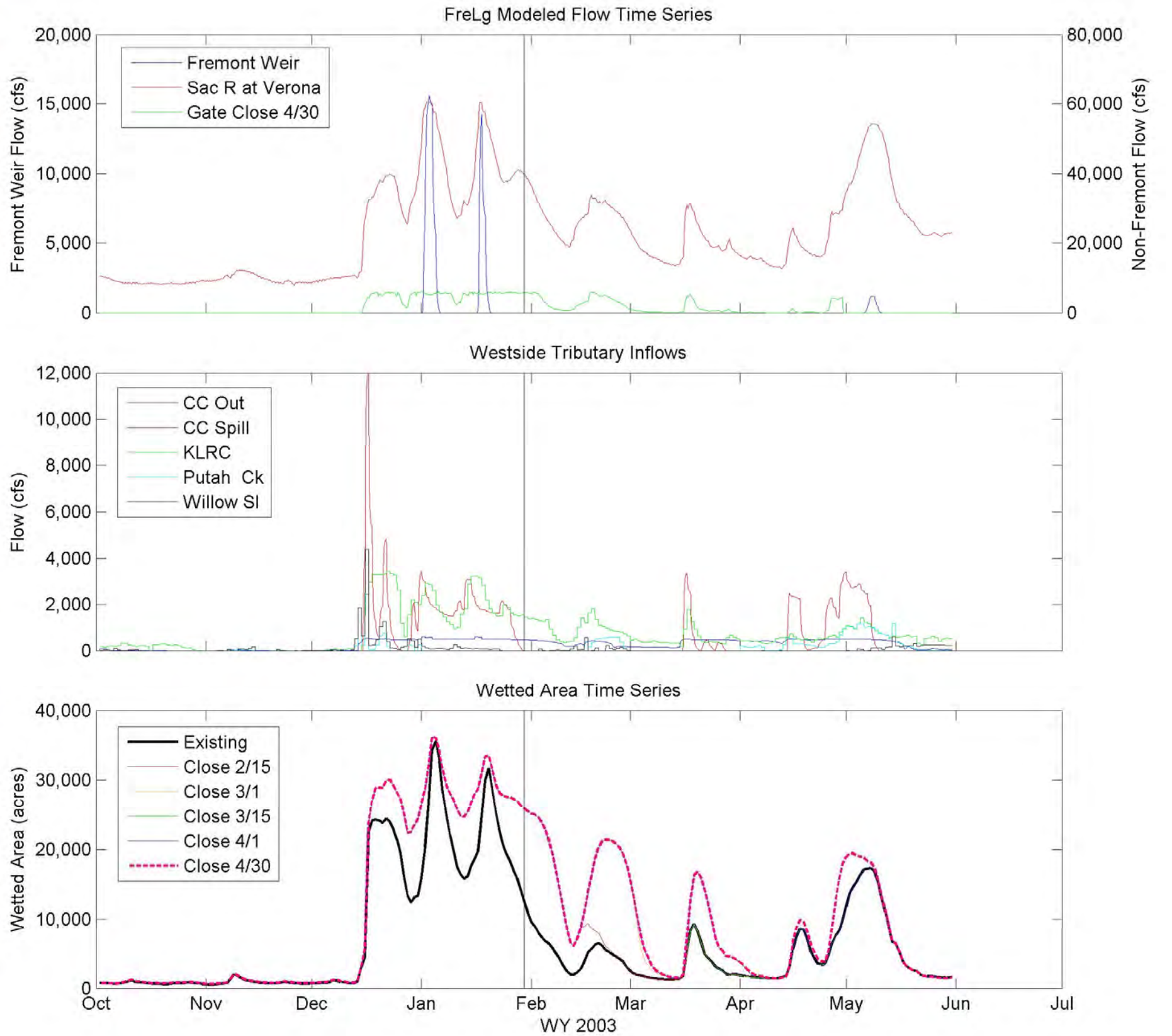
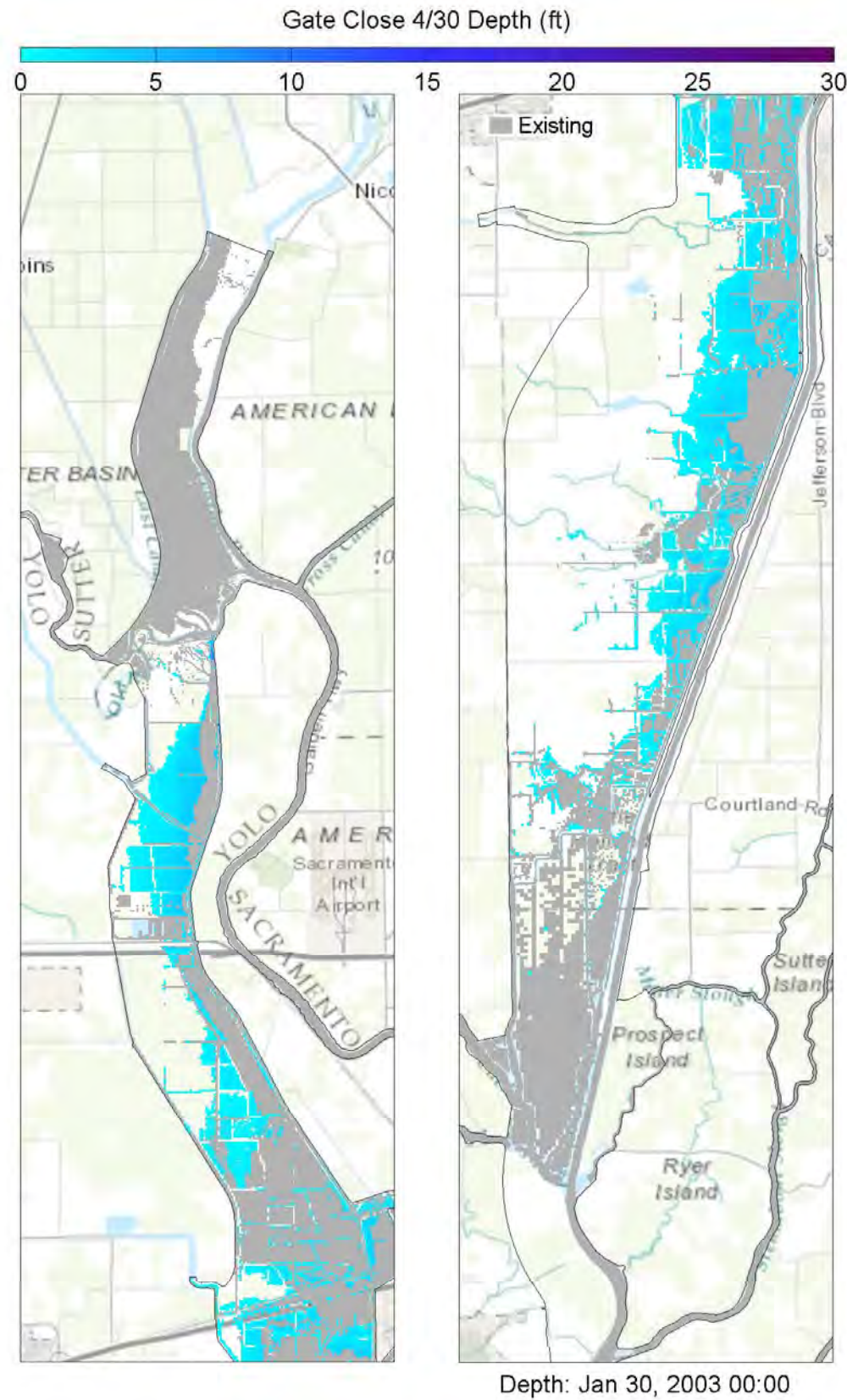
Yolo Bypass Salmonid Habitat Restoration and Fish Passage

Wetted Area Comparison for WY 2002 for FreLg

Prepared for DWR

Created By: SJB

Figure E6



Notes: TUFLOW model results showing 2D inundation patterns (at specified time stamp) for existing and 4/30 gate closure (left panes), Yolo Bypass inflows (upper right panes), and wetted area for all five gate closures (lower right pane). The vertical bar in the right panes corresponds to the time stamp below the left panes, whereby the blue hatching represents 4/30 gate closure conditions as overlain by the grey hatching representing existing conditions.



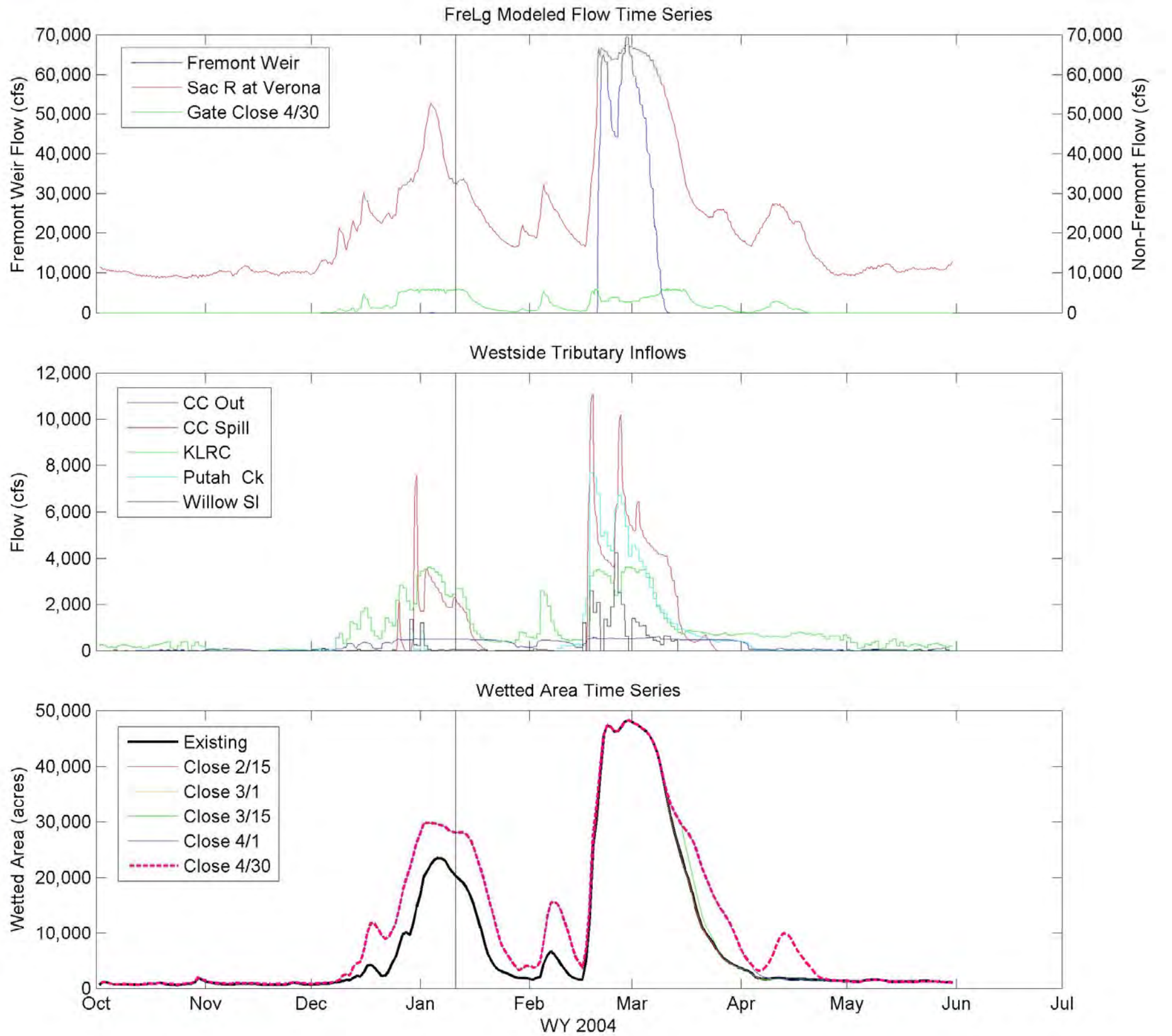
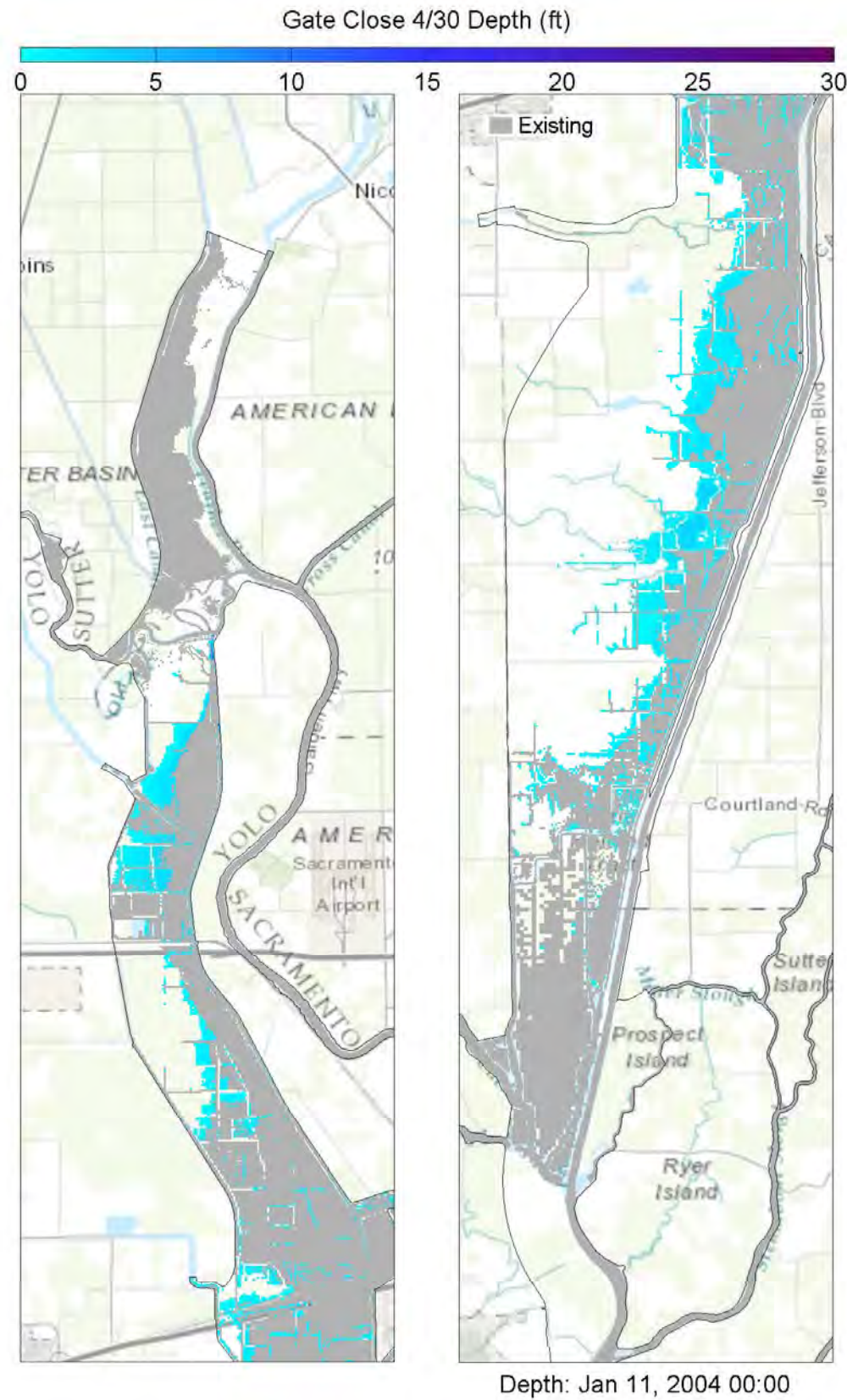
Yolo Bypass Salmonid Habitat Restoration and Fish Passage

Wetted Area Comparison for WY 2003 for FreLg

Prepared for DWR

Created By: SJB

Figure E7



Notes: TUFLOW model results showing 2D inundation patterns (at specified time stamp) for existing and 4/30 gate closure (left panes), Yolo Bypass inflows (upper right panes), and wetted area for all five gate closures (lower right pane). The vertical bar in the right panes corresponds to the time stamp below the left panes, whereby the blue hatching represents 4/30 gate closure conditions as overlain by the grey hatching representing existing conditions.



Yolo Bypass Salmonid Habitat Restoration and Fish Passage

Wetted Area Comparison for WY 2004 for FreLg

Prepared for DWR

Created By: SJB

Figure E8