

Notes: TUFLOW model results showing 2D inundation patterns (at specified time stamp) for existing and 4/30 gate closure (left panes), Yolo Bypass inflows (upper right panes), and wetted area for all five gate closures (lower right pane). The vertical bar in the right panes corresponds to the time stamp below the left panes, whereby the blue hatching represents 4/30 gate closure conditions as overlain by the grey hatching representing existing conditions.

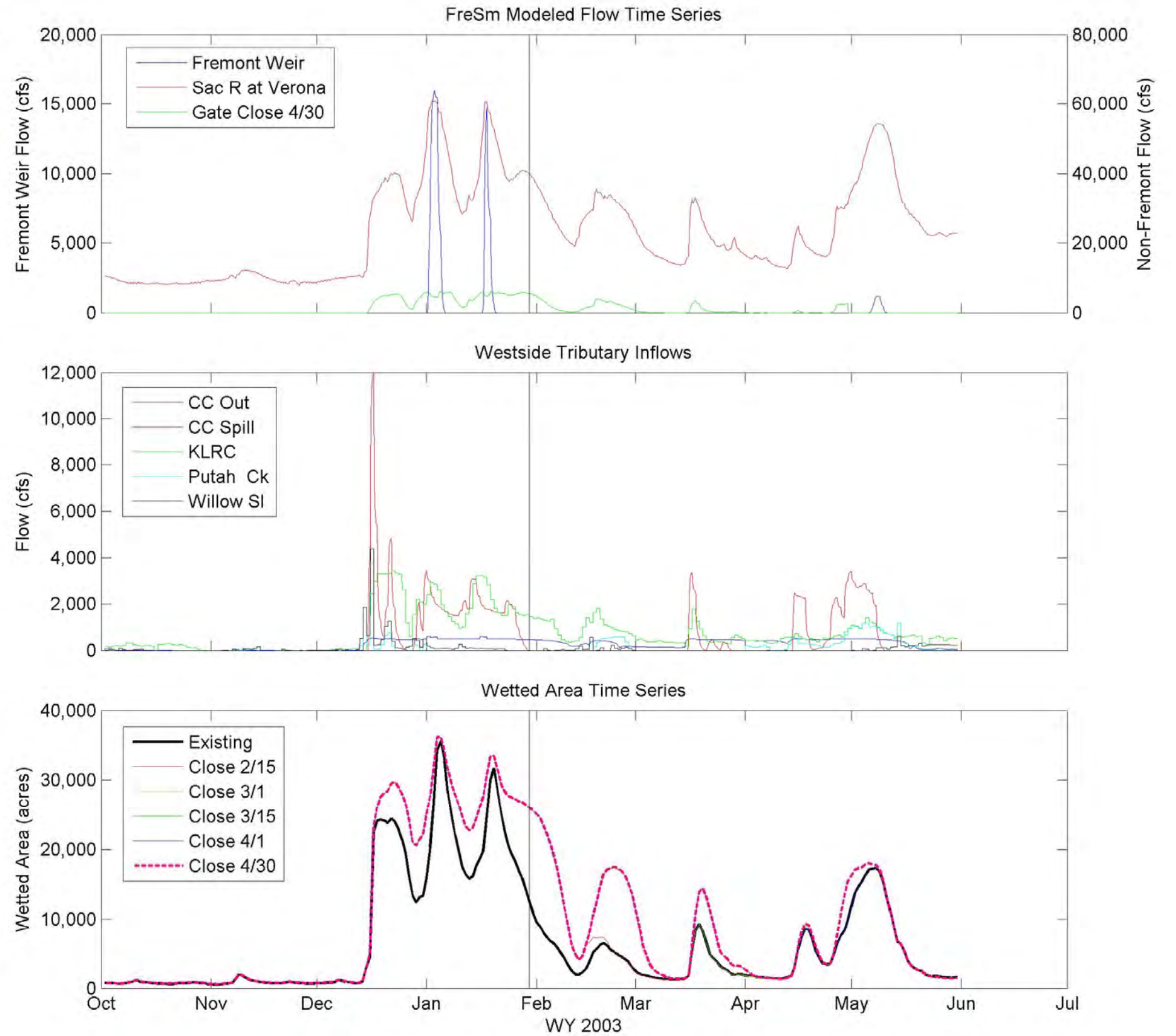
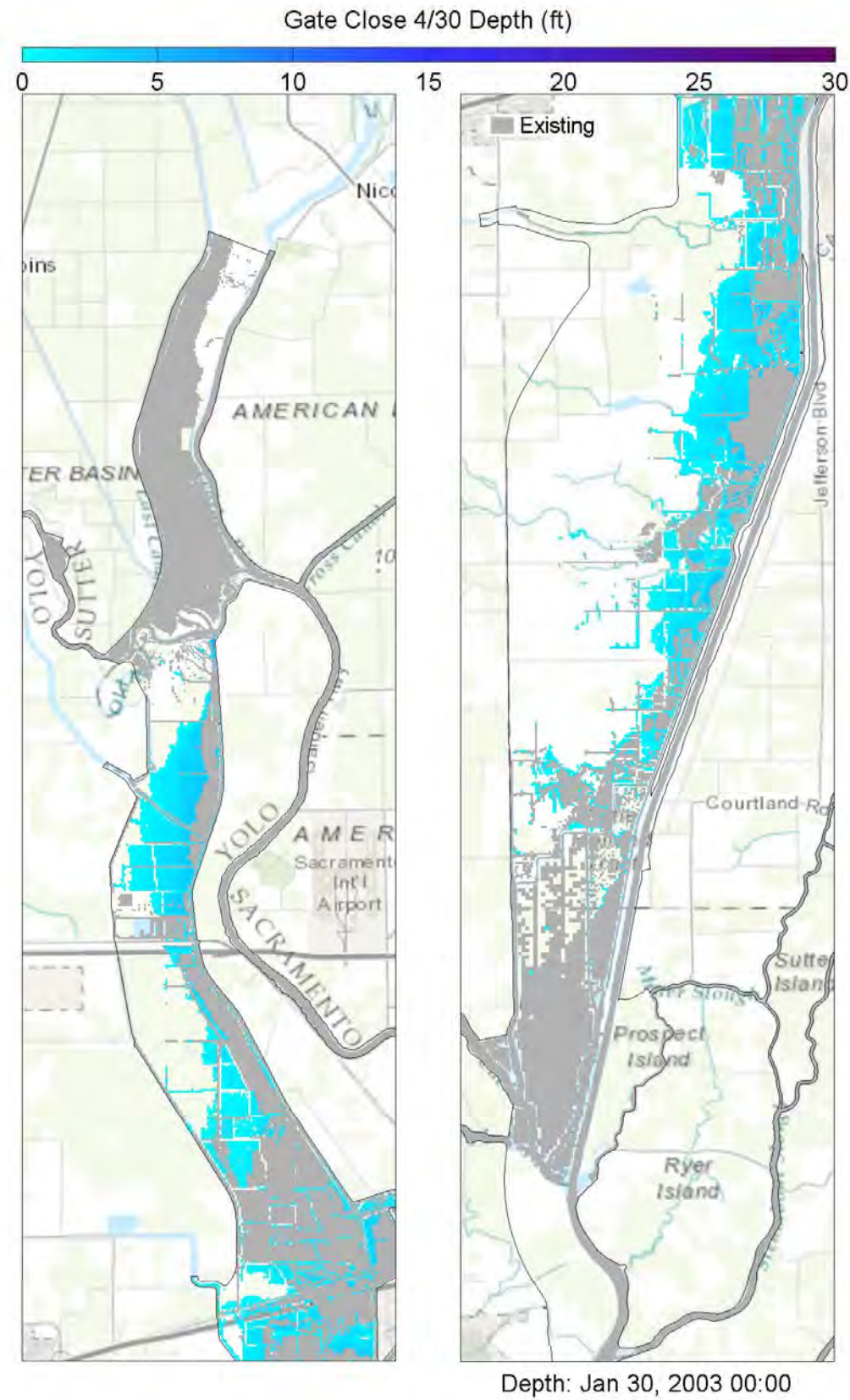


Yolo Bypass Salmonid Habitat Restoration and Fish Passage  
**Wetted Acres for All Gate Closures for FreMed – WY2003**

Prepared for DWR

Created By: SJB

**Figure 7-13**



Notes: TUFLOW model results showing 2D inundation patterns (at specified time stamp) for existing and 4/30 gate closure (left panes), Yolo Bypass inflows (upper right panes), and wetted area for all five gate closures (lower right pane). The vertical bar in the right panes corresponds to the time stamp below the left panes, whereby the blue hatching represents 4/30 gate closure conditions as overlain by the grey hatching representing existing conditions.

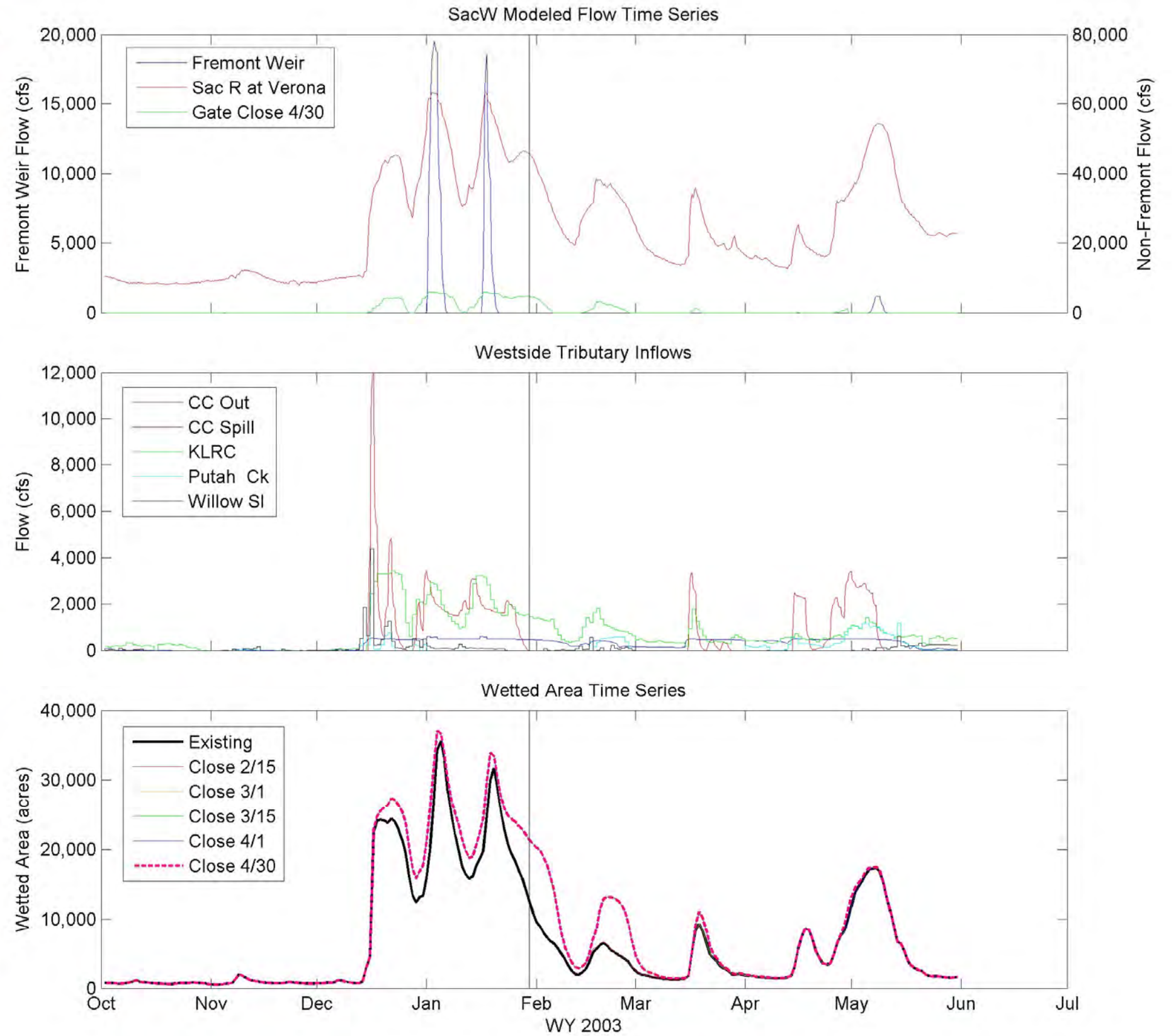
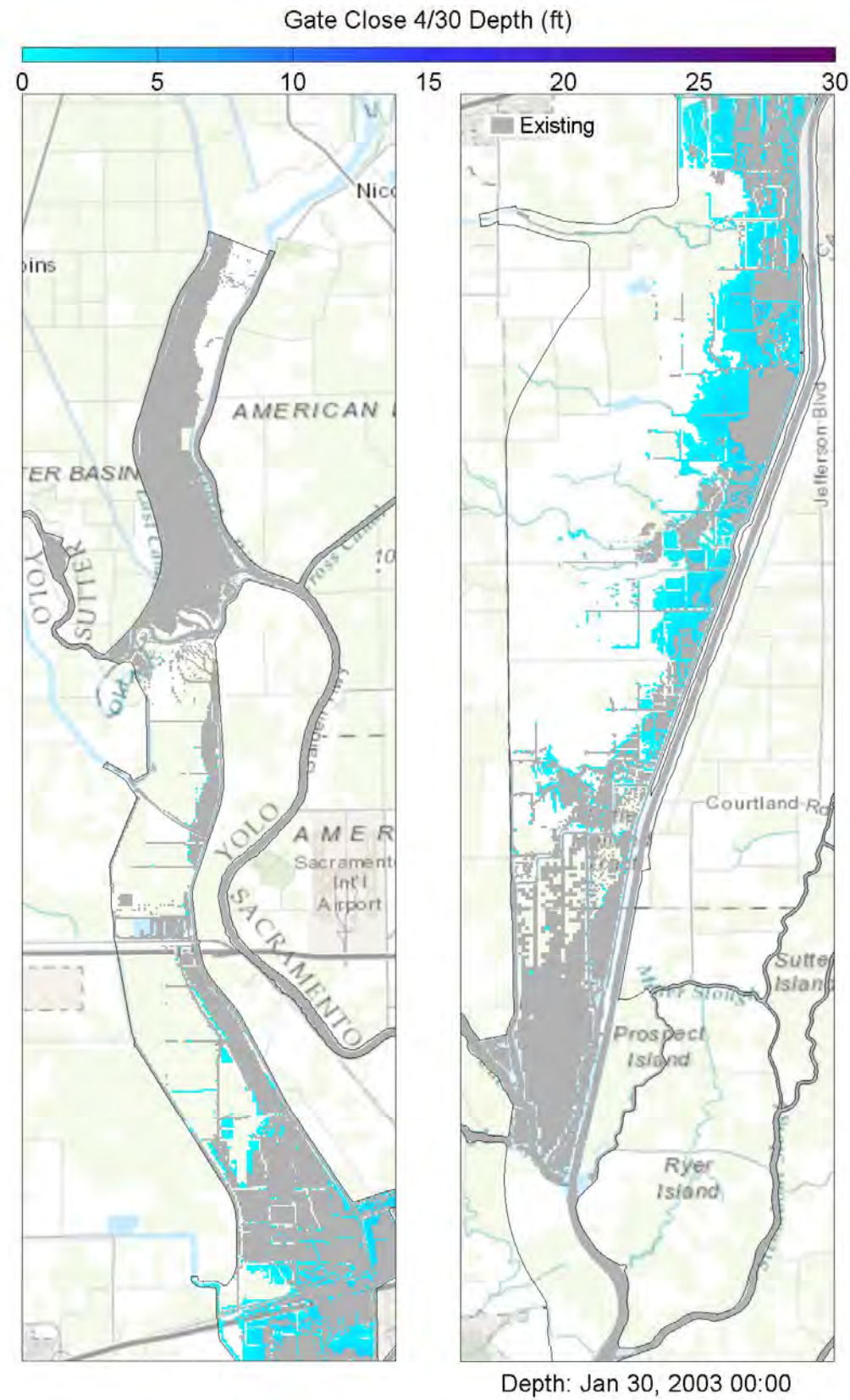


Yolo Bypass Salmonid Habitat Restoration and Fish Passage  
**Wetted Acres for All Gate Closures for FreSm – WY2003**

Prepared for DWR

Created By: SJB

**Figure 7-14**



Notes: TUFLOW model results showing 2D inundation patterns (at specified time stamp) for existing and 4/30 gate closure (left panes), Yolo Bypass inflows (upper right panes), and wetted area for all five gate closures (lower right pane). The vertical bar in the right panes corresponds to the time stamp below the left panes, whereby the blue hatching represents 4/30 gate closure conditions as overlain by the grey hatching representing existing conditions.

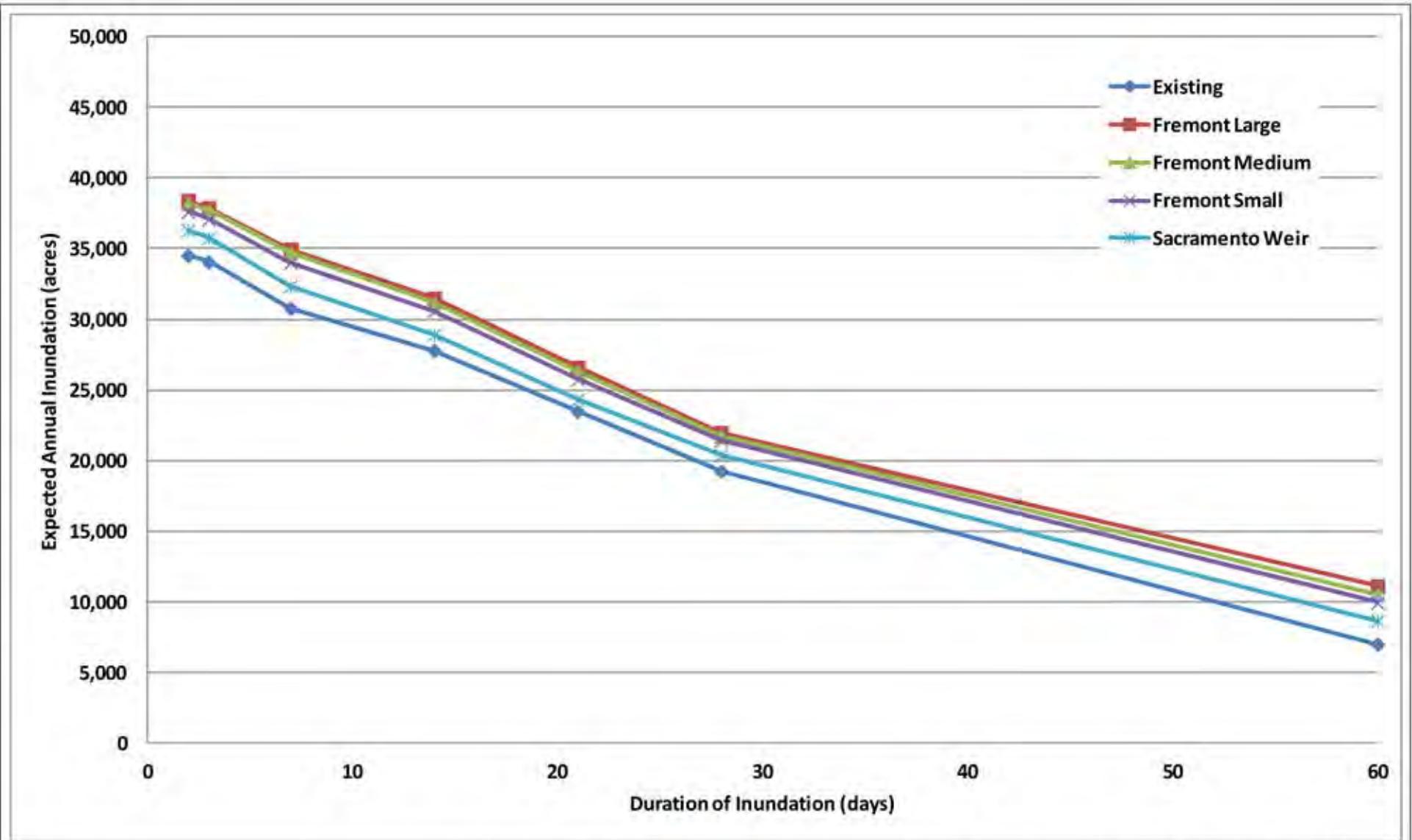


Yolo Bypass Salmonid Habitat Restoration and Fish Passage  
**Wetted Acres for All Gate Closures for SacW – WY2003**

Prepared for DWR

Created By: SJB

**Figure 7-15**



Notes:

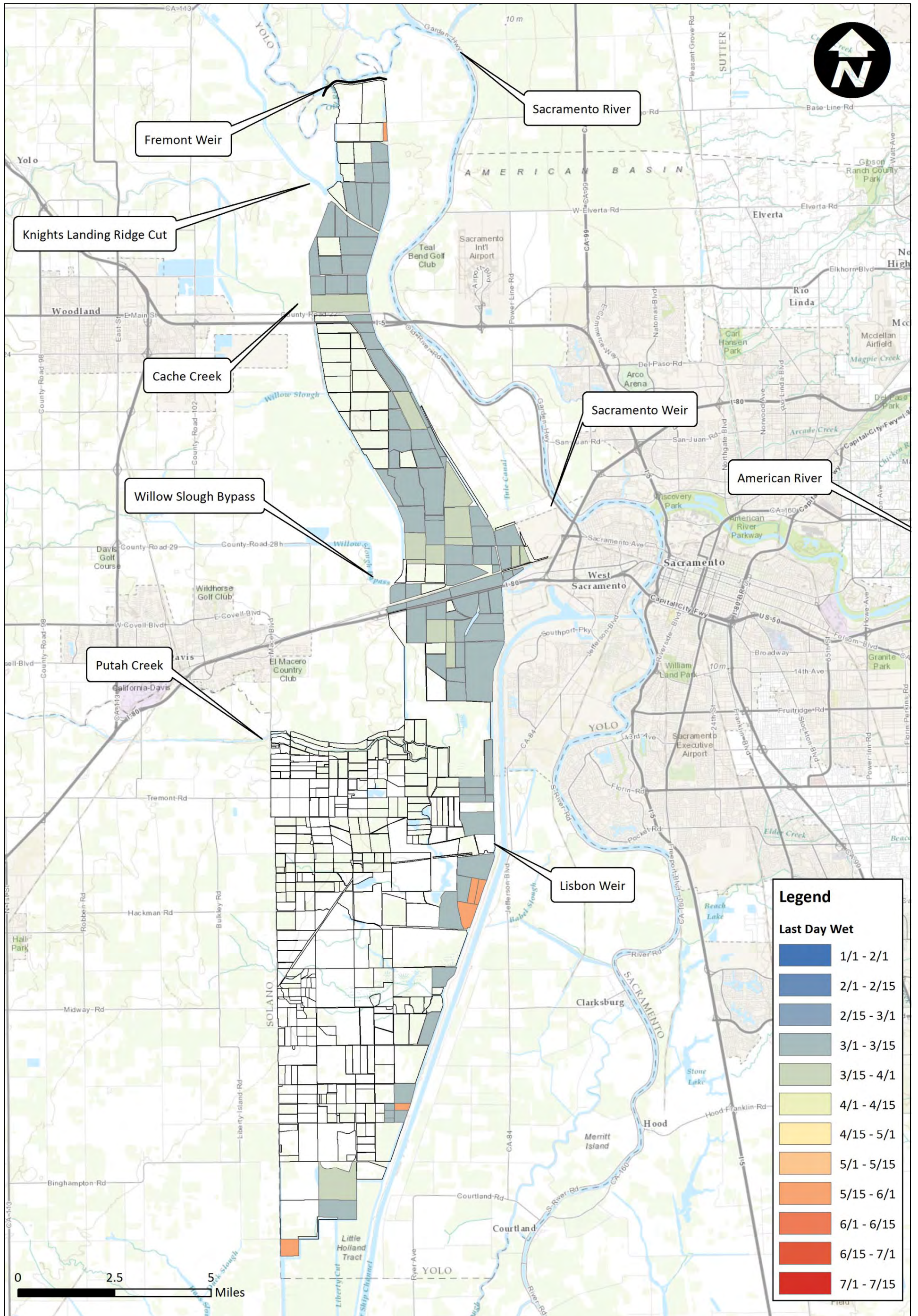


Yolo Bypass Salmonid Habitat Restoration and Fish Passage  
**Expected Annual Inundation for FreLg 4/30 Closure**

Prepared for DWR

Created By: CRC

**Figure 7-16**



Notes:

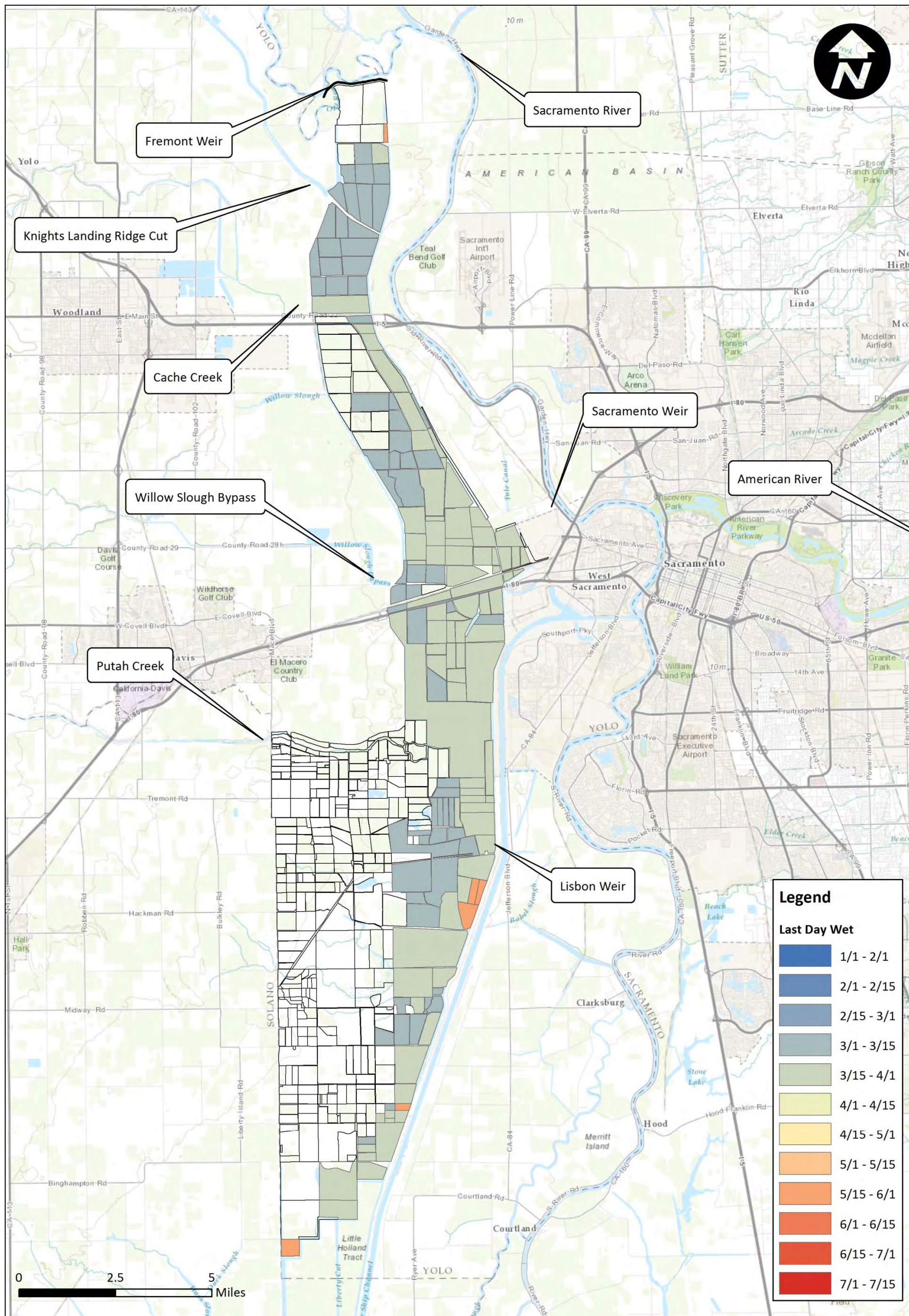


Yolo Bypass Salmonid Habitat Restoration and Fish Passage  
**Last Day Wet Existing Conditions WY 2001**

Prepared for DWR

Created By: RDJ

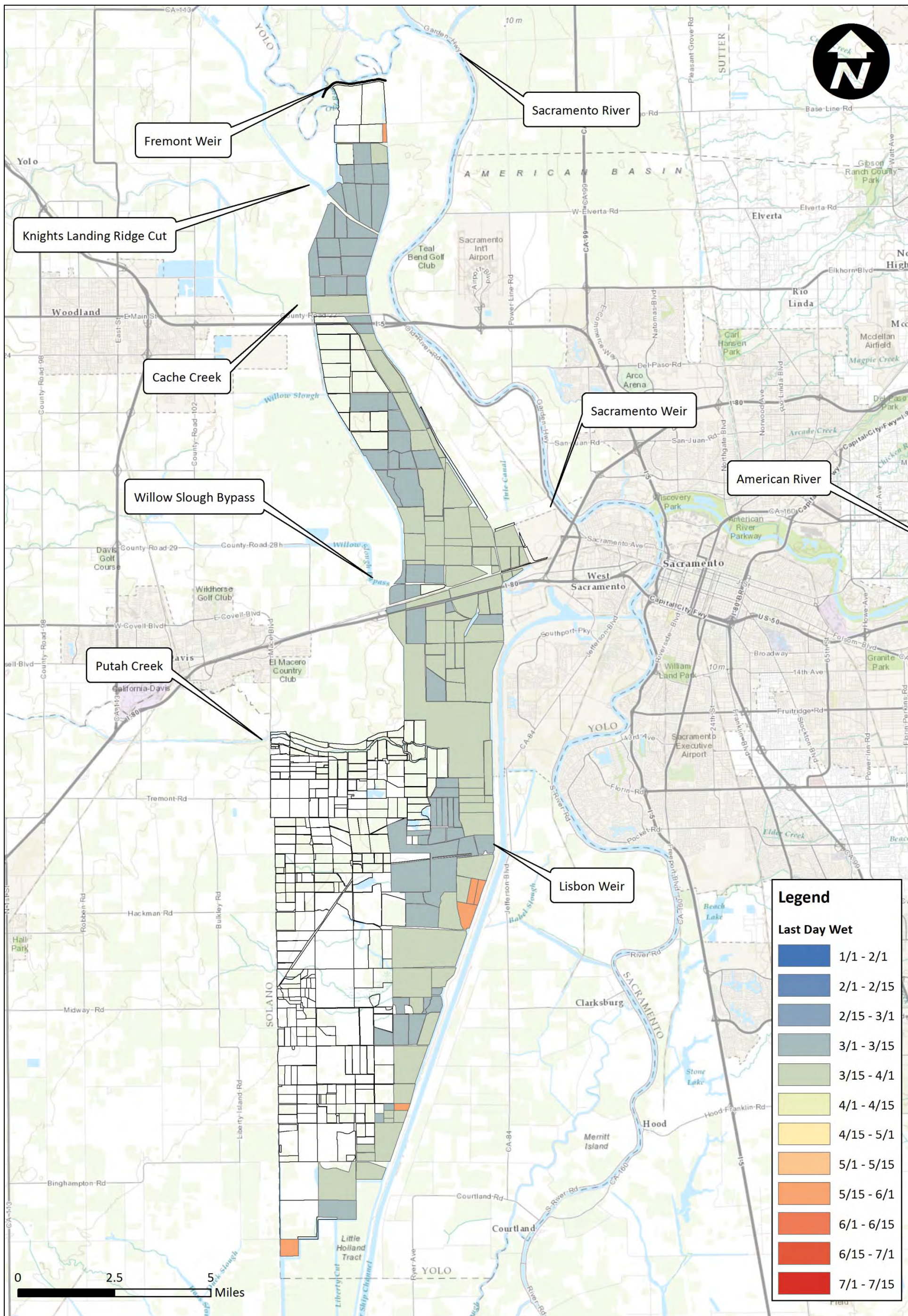
**Figure 7-17**



Notes:



Yolo Bypass Salmonid Habitat Restoration and Fish Passage  
**Last Day Wet FreLg Channel 4/30 Closure WY 2001**  
 Prepared for DWR      Created By: RDJ      **Figure 7-18**



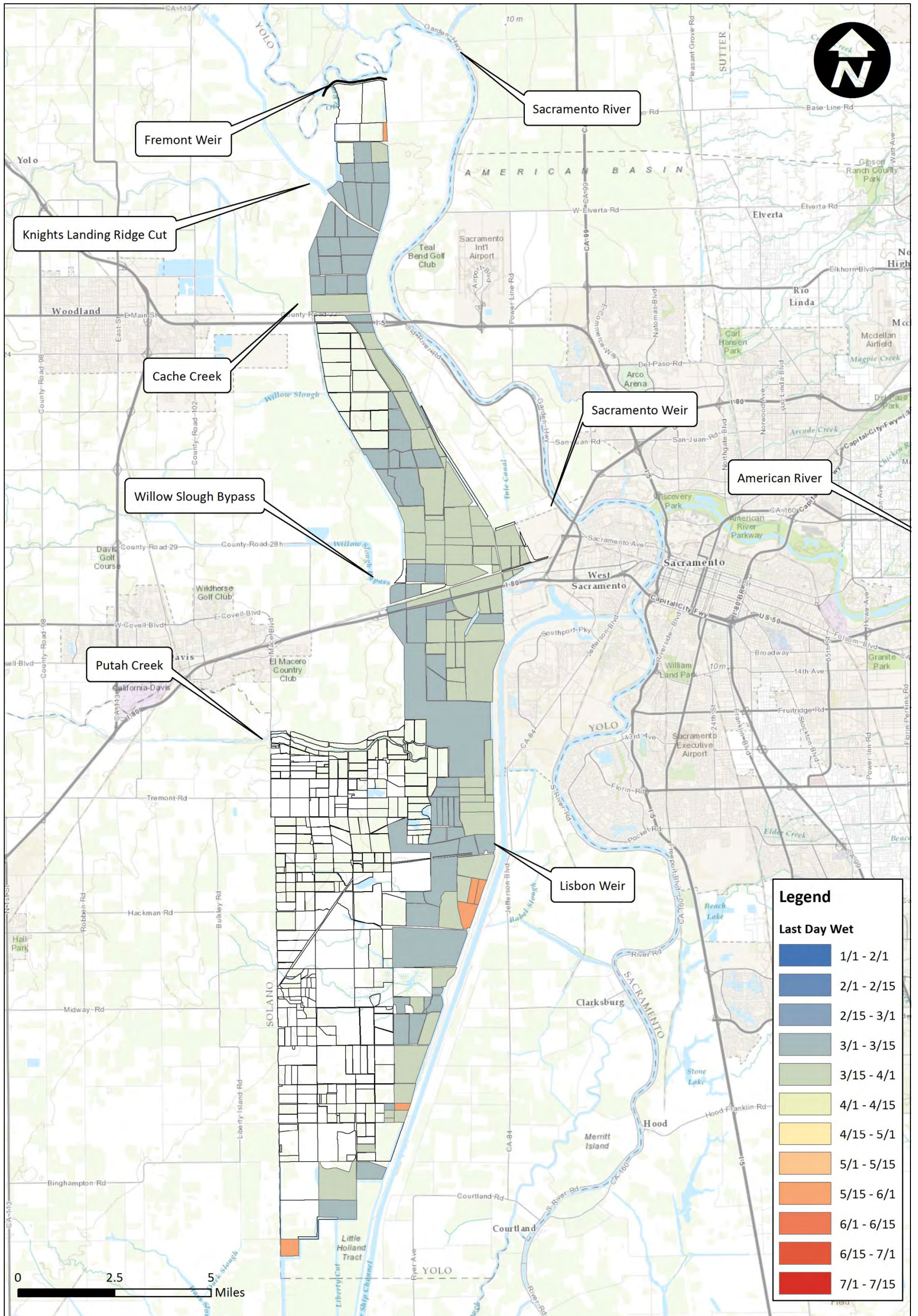
Notes:



Prepared for DWR

Created By: RDJ

Yolo Bypass Salmonid Habitat Restoration and Fish Passage  
**Last Day Wet FreMed Closure 4/30 WY 2001**  
**Figure 7-19**



Notes:



Yolo Bypass Salmonid Habitat Restoration and Fish Passage  
**Last Day Wet FreSm Channel 4/30 Closure 2001**

Prepared for DWR

Created By: RDJ

**Figure 7-20**