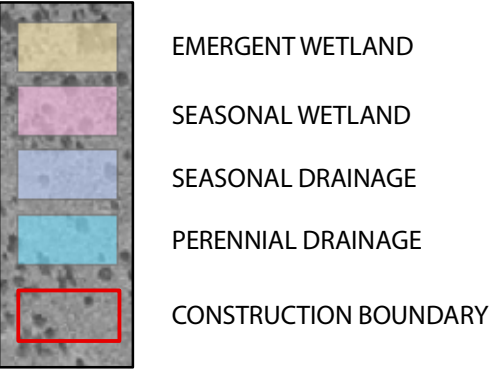


H:\GIS\Projects\battle_creek\03035.03\arcmap\FEIS_maps\Fig_M7_IDD.SP.mxd LD 06.16.05

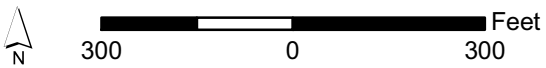


FIGURE M-7
WATERS OF THE UNITED STATES
INSKIP DIVERSION DAM / SOUTH
POWERHOUSE PROJECT SITE

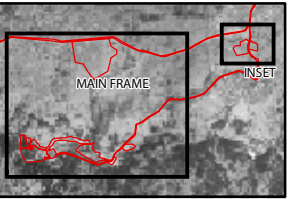


TYPE	AREA (ACRES)		
	PERMANENT	TEMPORARY	BANK STABILIZATION
EMERGENT WETLAND		0.005	
SEASONAL WETLAND	0.305	0.092	
SEASONAL DRAINAGE	0.001		
PERENNIAL DRAINAGE	0.355	1.437	0.420
TOTAL	0.661	1.534	0.420

THE AFFECTED ACREAGES OF WETLANDS AND OTHER WATERS OF THE U.S. WERE CALCULATED USING CONSTRUCTION DESIGN DRAWINGS PROVIDED BY RECLAMATION TO SATISFY THE REQUIREMENTS OF SECTION 404 OF THE CLEAN WATER ACT.



SOURCE: U.S. Geological Survey Digital Orthophoto Quarter Quadrangles 1998



Prepared for the U.S. Department of Interior,
Bureau of Reclamation, and the
State Water Resources Control Board
by Jones & Stokes
July 2005

H:\GIS\Projects\batlle_creek\03\035.03\arcmap\FEIS_maps\Fig_M8_LRCF.mxd LD 06.16.05

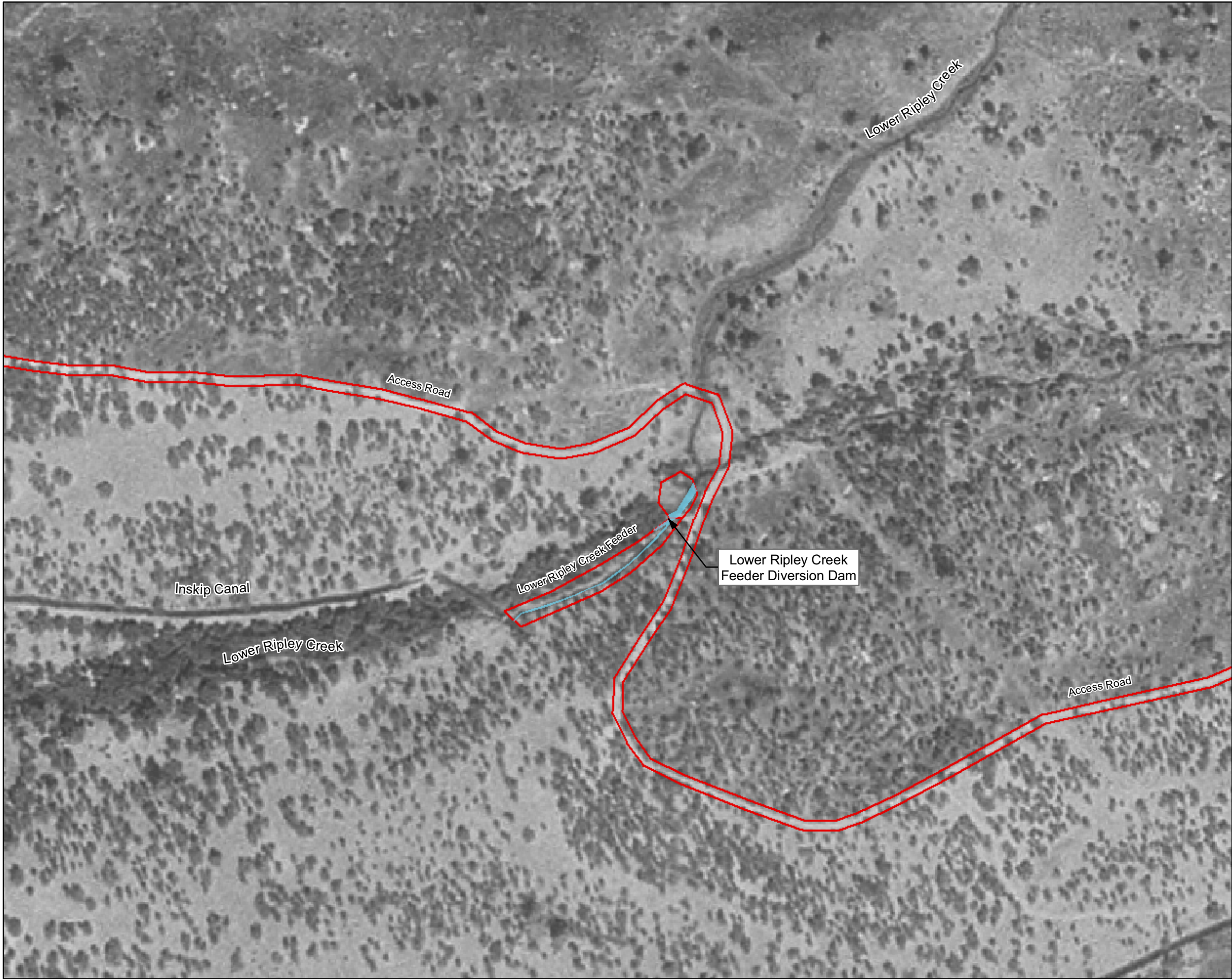
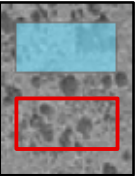


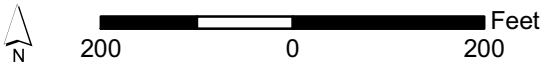
FIGURE M-8
WATERS OF THE UNITED STATES
LOWER RIPLEY CREEK FEEDER
PROJECT SITE



PERENNIAL DRAINAGE
CONSTRUCTION BOUNDARY

TYPE	AREA (ACRES)
	TEMPORARY
PERENNIAL DRAINAGE	0.020
TOTAL	0.020

THE AFFECTED ACREAGES OF WETLANDS AND OTHER WATERS OF THE U.S. WERE CALCULATED USING CONSTRUCTION DESIGN DRAWINGS PROVIDED BY RECLAMATION TO SATISFY THE REQUIREMENTS OF SECTION 404 OF THE CLEAN WATER ACT.



SOURCE: U.S. Geological Survey Digital Orthophoto Quarter Quadrangles 1998

Prepared for the U.S. Department of Interior,
Bureau of Reclamation, and the
State Water Resources Control Board
by Jones & Stokes
July 2005

H:\GIS\Projects\Battle_creek\030305\03\arcmap\FEIS_maps\Fig_M9_CDD_IP.mxd LD 06/16/05

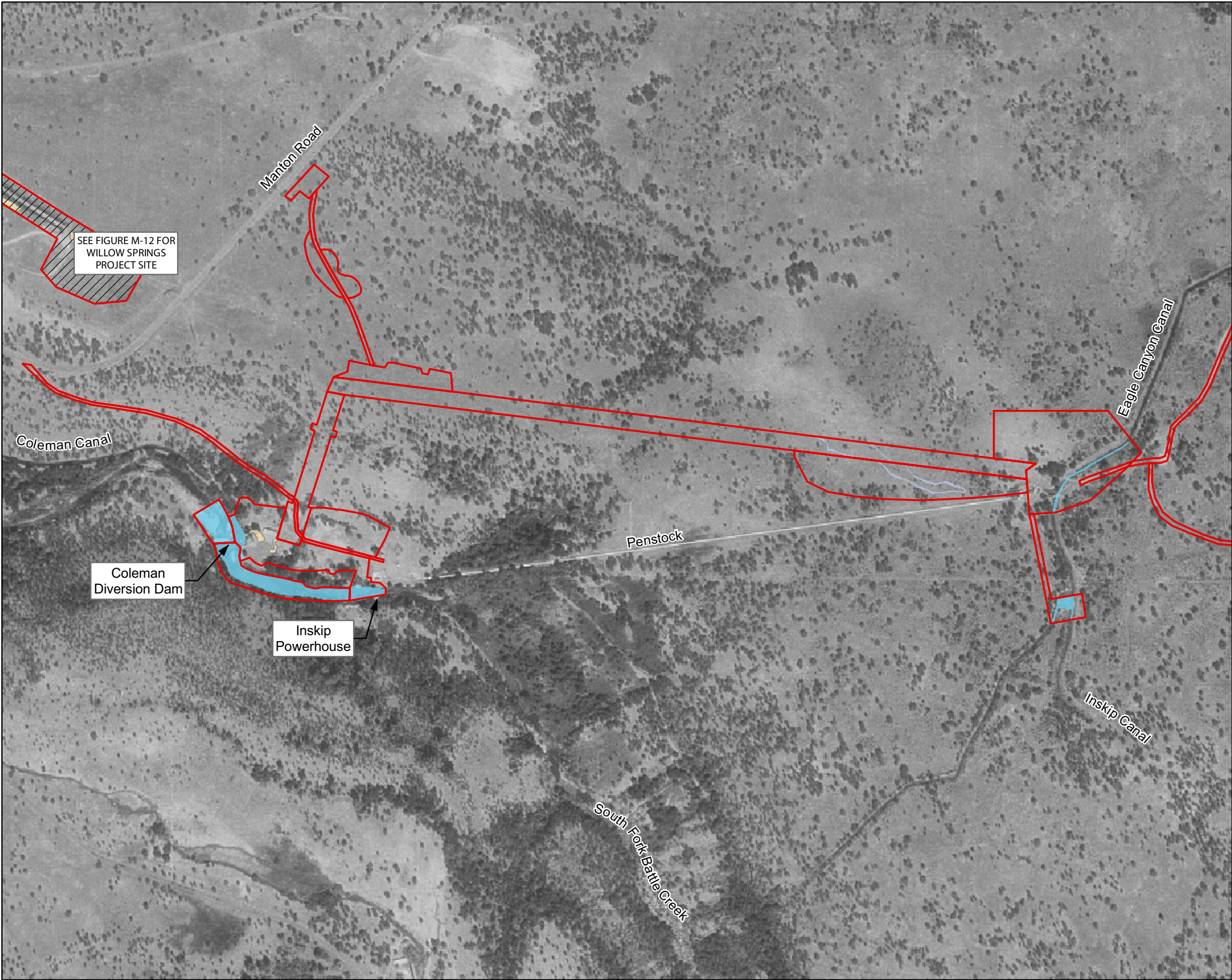
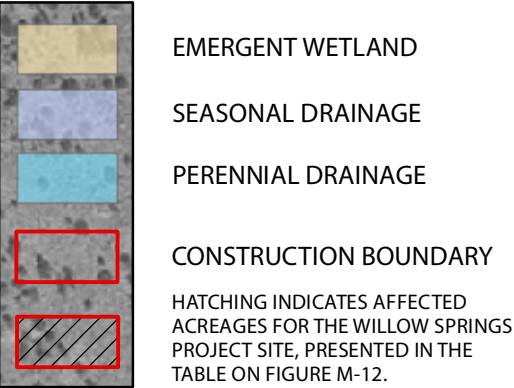


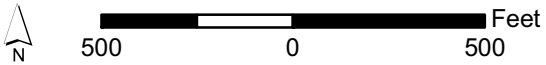
FIGURE M-9
WATERS OF THE UNITED STATES

COLEMAN DIVERSION DAM /
INSKIP POWERHOUSE PROJECT SITE



TYPE	AREA (ACRES)		
	PERMANENT	TEMPORARY	RESTORATION
EMERGENT WETLAND	0.590		
PERENNIAL DRAINAGE	0.160	1.908	0.051
TOTAL	0.750	1.908	0.051

THE AFFECTED ACREAGES OF WETLANDS AND OTHER WATERS OF THE U.S. WERE CALCULATED USING CONSTRUCTION DESIGN DRAWINGS PROVIDED BY RECLAMATION TO SATISFY THE REQUIREMENTS OF SECTION 404 OF THE CLEAN WATER ACT.



SOURCE: U.S. Geological Survey Digital Orthophoto Quarter Quadrangles 1998

Prepared for the U.S. Department of Interior,
Bureau of Reclamation, and the
State Water Resources Control Board
by Jones & Stokes
July 2005

H:\GIS\Projects\batlle_creek\03035.03\arcmap\FEIS_maps\Fig_M10_ADD.mxd LD 06.16.05

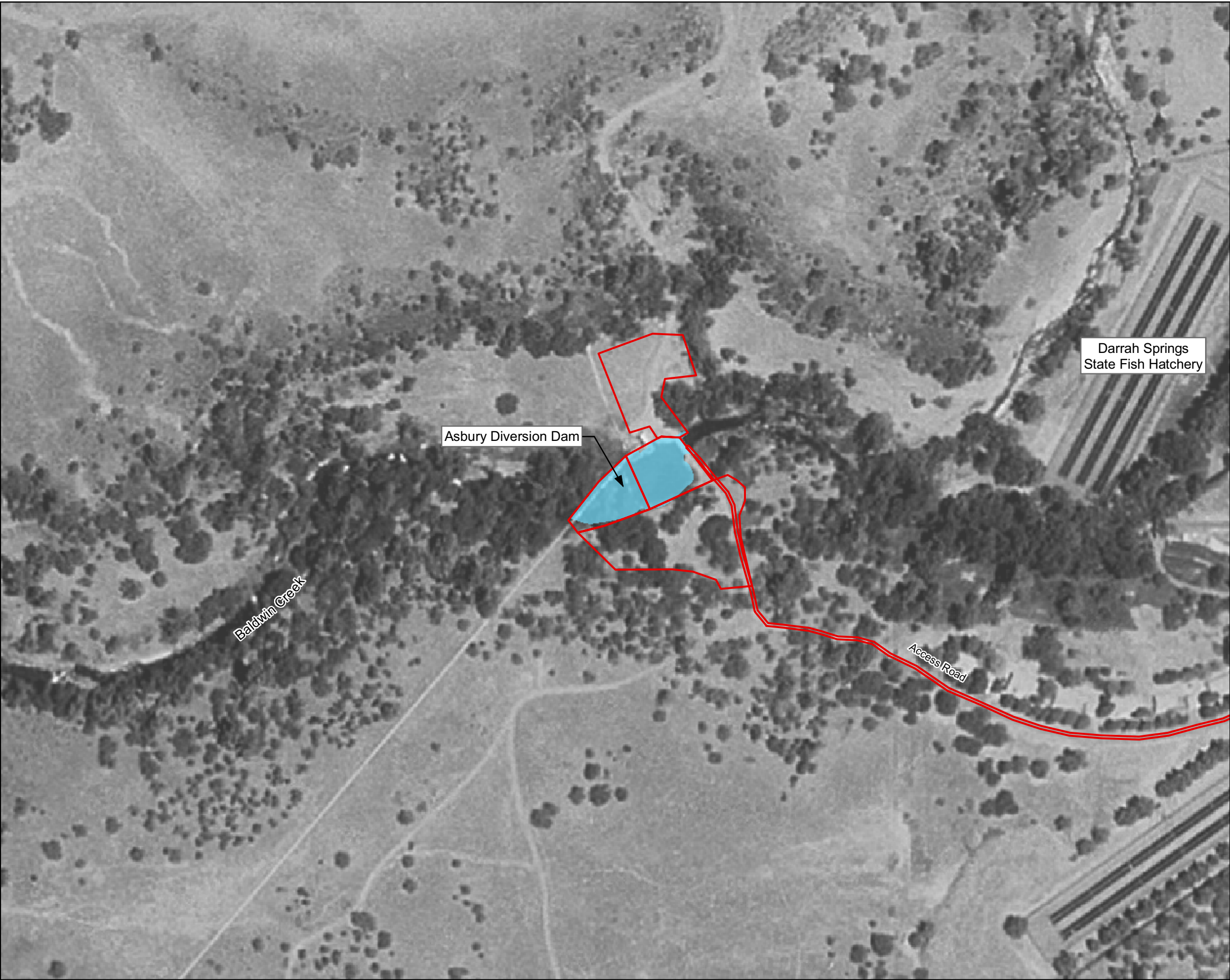


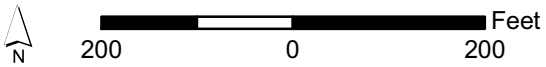
FIGURE M-10
WATERS OF THE UNITED STATES
ASBURY PUMP STATION AND
DIVERSION DAM PROJECT SITE

PERENNIAL DRAINAGE

CONSTRUCTION BOUNDARY

TYPE	AREA (ACRES)	
	PERMANENT	TEMPORARY
PERENNIAL DRAINAGE	0.103	2.310
TOTAL	0.103	2.310

THE AFFECTED ACREAGES OF WETLANDS AND OTHER WATERS OF THE U.S. WERE CALCULATED USING CONSTRUCTION DESIGN DRAWINGS PROVIDED BY RECLAMATION TO SATISFY THE REQUIREMENTS OF SECTION 404 OF THE CLEAN WATER ACT.



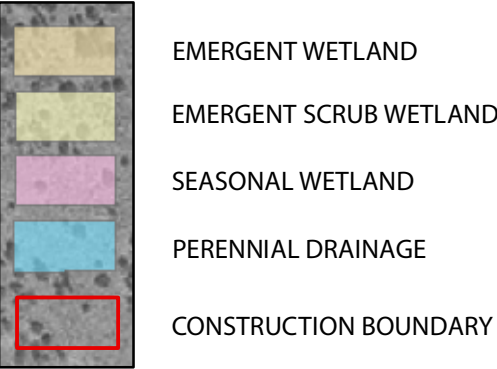
SOURCE: U.S. Geological Survey Digital Orthophoto Quarter Quadrangles 1998

Prepared for the U.S. Department of Interior,
Bureau of Reclamation, and the
State Water Resources Control Board
by Jones & Stokes
July 2005

H:\GIS\Projects\batlle_creek\03035.03\arcmap\FEIS_maps\Fig_M11_JC.mxd LD 06.16.05

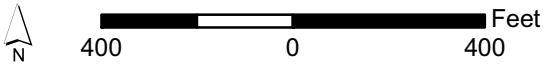


FIGURE M-11
WATERS OF THE UNITED STATES
JEFFCOAT MITIGATION SITE



TYPE	AREA (ACRES)	
	TEMPORARY	PERMANENT
EMERGENT WETLAND	0.004	0.061
EMERGENT SCRUB WETLAND	1.92	0.025
SEASONAL WETLAND	0.458	
PERENNIAL DRAINAGE	0.022	
TOTAL	2.404	0.086

THE AFFECTED ACREAGES OF WETLANDS AND OTHER WATERS OF THE U.S. WERE CALCULATED USING CONSTRUCTION DESIGN DRAWINGS PROVIDED BY RECLAMATION TO SATISFY THE REQUIREMENTS OF SECTION 404 OF THE CLEAN WATER ACT.



SOURCE: U.S. Geological Survey Digital Orthophoto Quarter Quadrangles 1998

Prepared for the U.S. Department of Interior,
Bureau of Reclamation, and the
State Water Resources Control Board
by Jones & Stokes
July 2005

H:\GIS\Projects\batlle_creek\0303503\arcmap\FEIS_maps\Fig_M12_WS.mxd LD 06/16/05



FIGURE M-12

WATERS OF THE UNITED STATES

WILLOW SPRINGS MITIGATION SITE

OPTION A—DISINFECTION FACILITY



EMERGENT WETLAND

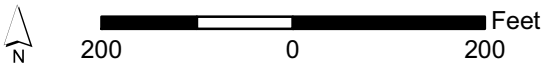
EMERGENT SCRUB WETLAND

CONSTRUCTION BOUNDARY

TYPE	AREA (ACRES)	
	PERMANENT	TEMPORARY
EMERGENT WETLAND	0.094	0.045
EMERGENT SCRUB WETLAND	0.212	0.103
TOTAL	0.306	0.148

THE AFFECTED ACREAGES OF WETLANDS AND OTHER WATERS OF THE U.S. WERE CALCULATED USING CONSTRUCTION DESIGN DRAWINGS PROVIDED BY RECLAMATION TO SATISFY THE REQUIREMENTS OF SECTION 404 OF THE CLEAN WATER ACT.

NOTE: THE PREFERRED MITIGATION OPTION IS TO ACQUIRE THE WILLOW SPRINGS TROUT FARM, WHICH WOULD NOT RESULT IN ANY CONSTRUCTION ACTIVITIES AT THIS MITIGATION SITE.



SOURCE: U.S. Geological Survey Digital Orthophoto Quarter Quadrangles 1998

Prepared for the U.S. Department of Interior,
Bureau of Reclamation, and the
State Water Resources Control Board
by Jones & Stokes
July 2005