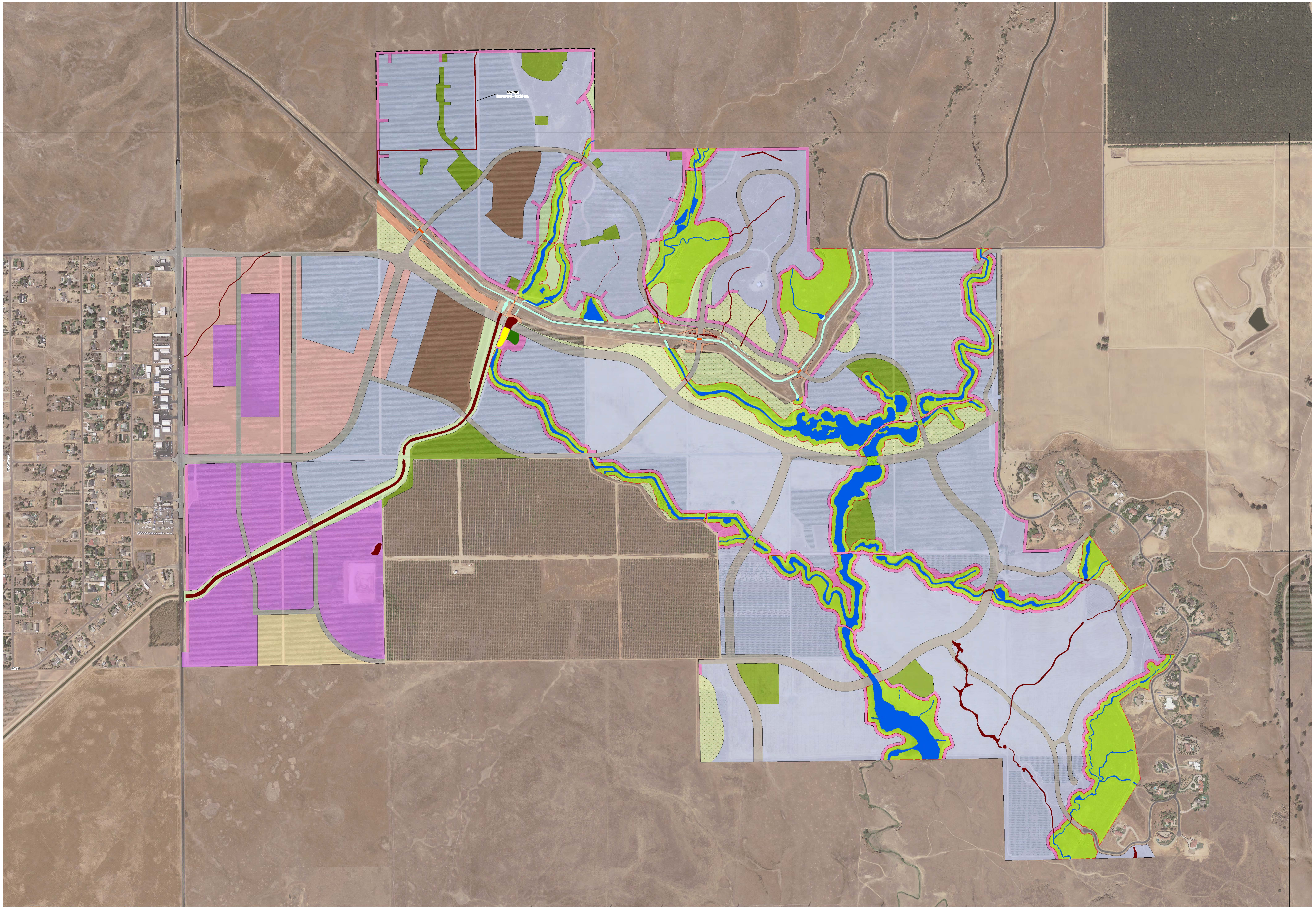


APPENDIX B

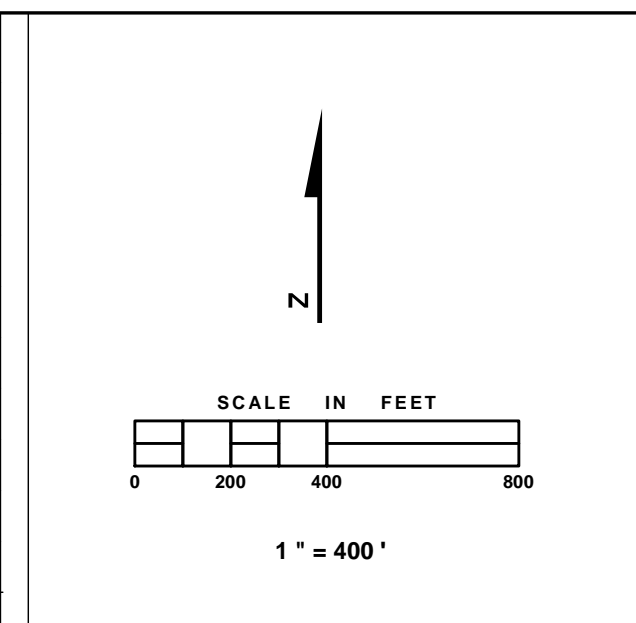
PROJECT DRAWINGS AND MAPS **Set 3 of 3**



NOTES

Project Boundary - Geotag
 Aerial Photo Source: USGS 2013

Job Name: Proposed Preserve/Impact Plan
 Project Number: 2014-065
 Map Scale: 1" = 400'
 Production Date: 4/25/2017
 Plot Date: 4/25/2017
 Map Name: TV_MAP_v5_Riparian.mxd

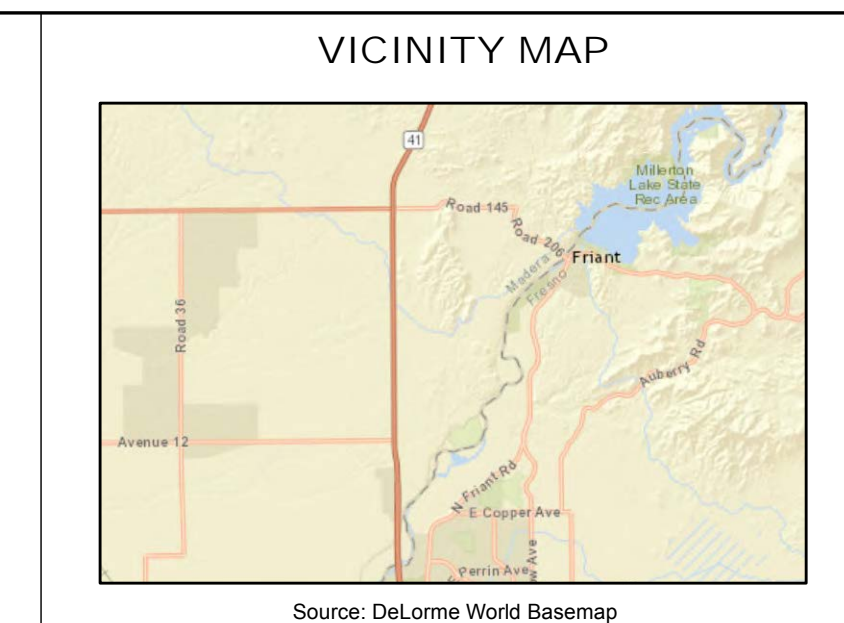


MAP FEATURES

<ul style="list-style-type: none"> Project Boundary - 1555.47 acres NAPOTS - 44.31 acres Open Space Preserve - 186.35 acres Wetland Relocation - 0.48 acre Potential Riparian and Riparian Scrub Impacts - 0.54 acres Proposed Land Use Residential - 751.41 acres Industrial - 130.94 acres Commercial - 84.89 acres 	<ul style="list-style-type: none"> School - 33.32 acres Waste Water Treatment - 14.86 acres Road - 135.25 acres Canal Area Improvement - 6.98 acres Park - 39.40 acres Conceptual Trail System - 79.80 acres Agriculture - 57.15 acres Passive Open Space - 35.13 acres 	<ul style="list-style-type: none"> Waters of the U.S. under the Jurisdiction of CDFW Impacted Waters Preserved Waters Indirectly Impacted Waters Avoided Waters (No Impact) NAPOTS Waters Open Space Preserve - Conservation Easement to be recorded at a later date - 1,362 acres (includes 0.304 acres preserved wetlands)
---	---	--

	Preserve Acreage	Avoided Acreage (No Impacts)	Impacted (Filled) Acreage	Indirect Impacts	NAPOTS Acreage	Total
Vernal Pool	0.000	0.000	0.110	0.000	0.078	0.188
Wetland	8.635	0.000	1.611	0.000	0.463	10.709
Wetland Channel	31.136	0.000	1.374	0.458	0.208	33.176
Non-wetland Channel	2.511	0.000	2.998	0.000	0.003	5.512
Canal	0.000	0.119	4.943	0.000	4.435	9.497
Total	42.282	0.119	11.036	0.458	5.187	59.082

All area values are calculated in acres. Values reported in acres have been rounded to the thousandth of an acre which may cause minor reporting errors in the total values.



TESORO VIEJO MASTER PLANNED COMMUNITY

Proposed Preserve/Impact Plan

Location: N:\2014\2014-065 Tesoro Viejo\MAPS\Preserve_Impact\STV_MAP_v5_Riparian.mxd
 Production Date: 4/25/2017 Plot Date: 4/25/2017 Project Number: 2014-065
 Coordinate System: NAD 1983 StatePlane California III FIPS 0403 Feet Scale: 1" = 400' GIS Specialist: KG

ECORP Consulting, Inc.
 ENVIRONMENTAL CONSULTANTS

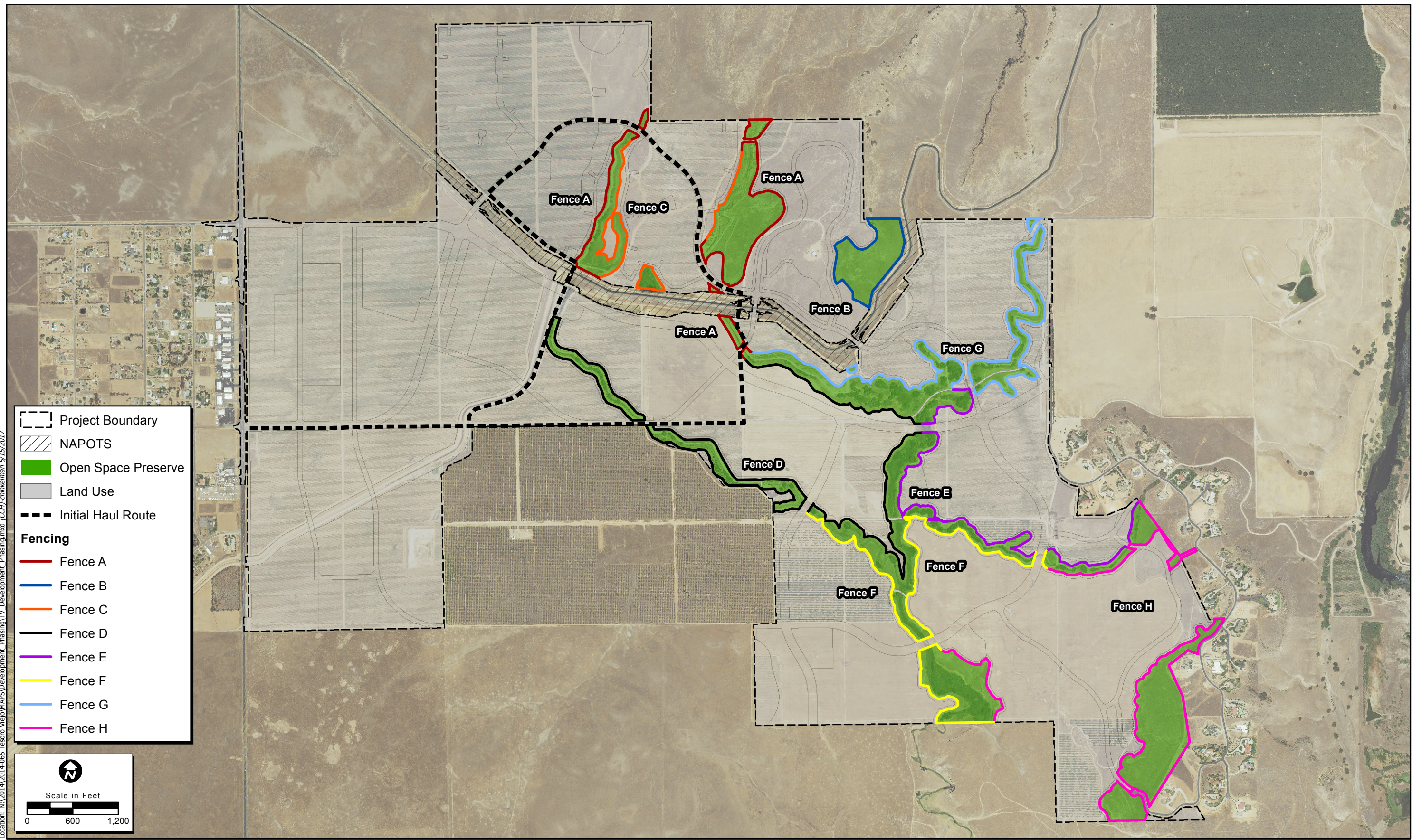
Inland Empire
 225 North 5th Street
 Redlands, CA 92374
 Ph: (909) 301-0906

Northern California
 2014 Horton Canyon Rd.
 Rocklin, CA 95677
 Ph: (916) 782-9500

San Diego Region
 Suite A202
 San Diego, CA 92123
 Ph: (619) 579-4942

Orange County
 2501 Van Clief Place
 Building 8, Ste 103
 Santa Ana, CA 92705
 Ph: (714) 848-6020

Location: N:\2014\2014-065 Tesoro Viejo\MAPS\Development_Phasing\TV_Development_Phasing\TV_Development_Phasing.mxd (CCH)-chr/mar_5/15/2017



Project Boundary
--- Project Boundary

NAPOTS
/// NAPOTS

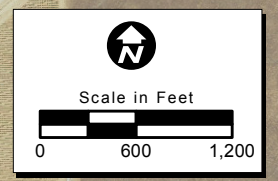
Open Space Preserve
■ Open Space Preserve

Land Use
■ Land Use

Initial Haul Route
--- Initial Haul Route

Fencing

- Fence A
- Fence B
- Fence C
- Fence D
- Fence E
- Fence F
- Fence G
- Fence H



Map Date: 5/15/2017
Photo Source: NAIP 2014